

- LEGEND**
- Project Boundary
 - Freehold Acquisition
 - Land in respect of which rights are being created
 - Local Authority Boundary



The common seal of National Grid Electricity Transmission plc was affixed on the 12th day of January 2023 in the presence of
 (Member of the Board Sealing Committee and Authorised Signatory)
 Dated 12 January 2023

BACKGROUND MAPPING INFORMATION HAS BEEN REPRODUCED FROM THE ORDNANCE SURVEY ON BEHALF OF THE CONTROLLER OF HIS MAJESTY'S STATIONARY OFFICE. © CROWN COPYRIGHT AND DATABASE RIGHTS 2020 OS 0100059731

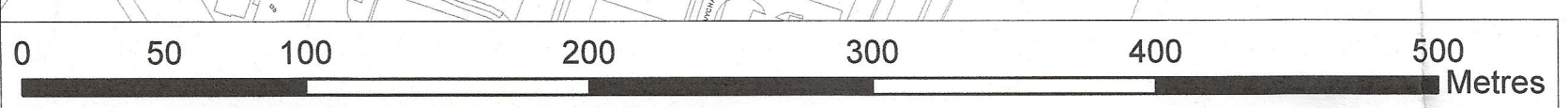
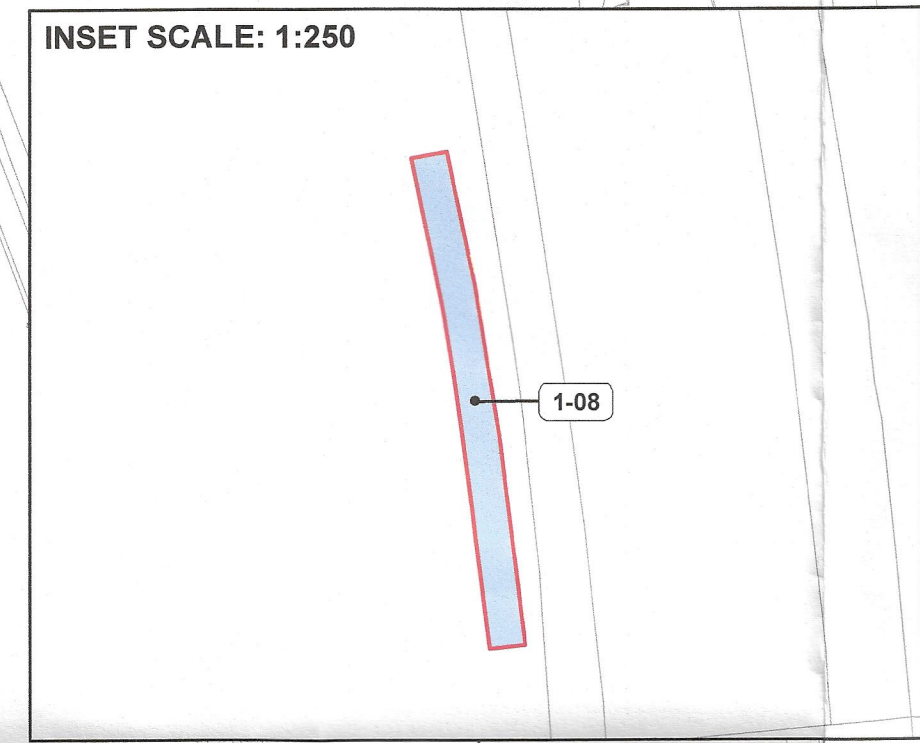
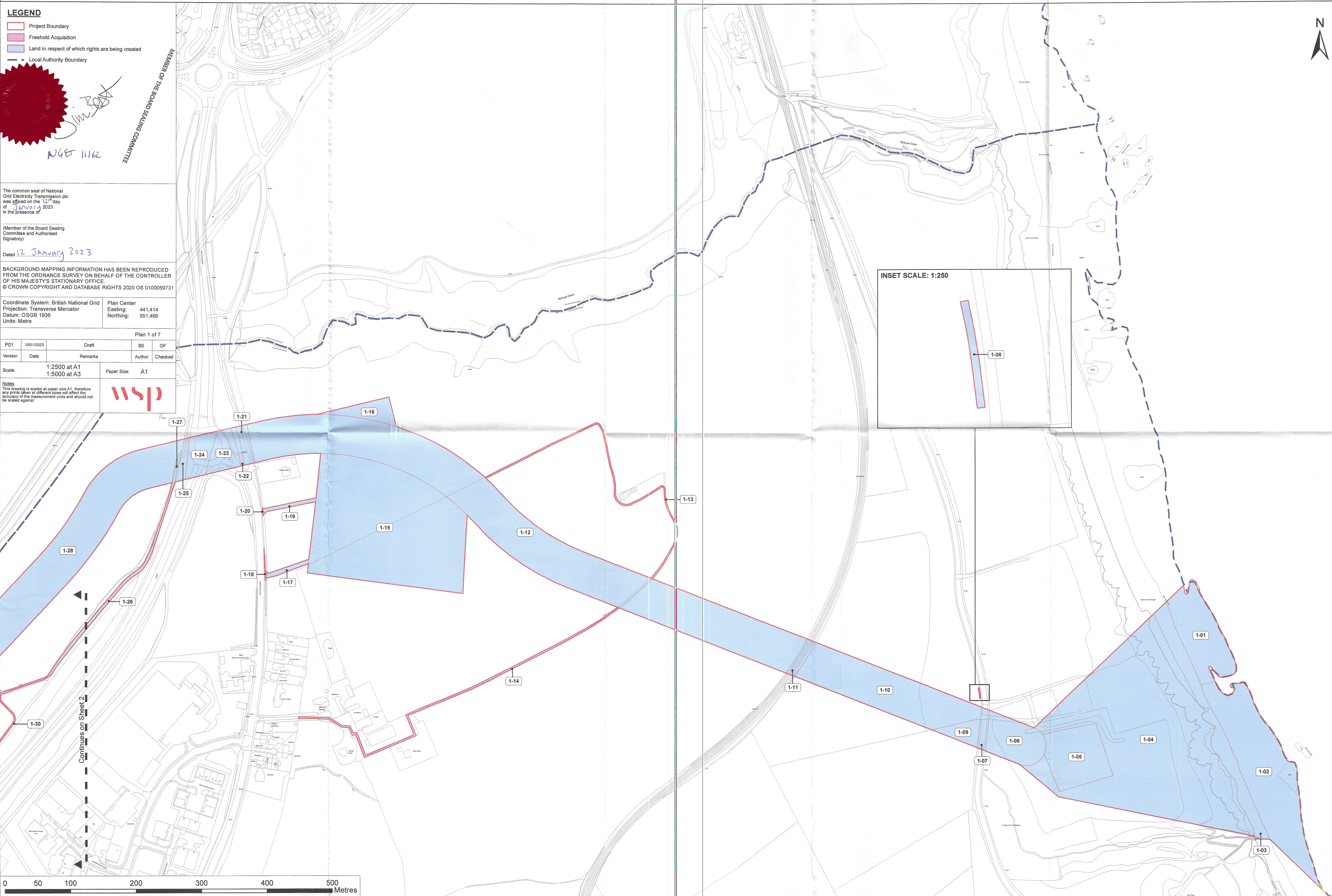
Coordinate System: British National Grid
 Projection: Transverse Mercator
 Datum: OSGB 1936
 Units: Metre

Plan Center
 Easting: 441,414
 Northing: 551,469

Plan 1 of 7

P01	10/1/2023	Draft	BS	OF
Version	Date	Remarks	Author	Checked
Scale:	1:2500 at A1			
	1:5000 at A3	Paper Size:	A1	

Notes
 This drawing is scaled at paper size A1, therefore any prints taken at different sizes will affect the accuracy of the measurement units and should not be scaled against.



Continues on Sheet 2

MEMBER OF THE BOARD SEALING COMMITTEE