

# Map 6. Marine Environmental Information

**EuroLink Non Statutory Consultation  
October – December 2022**

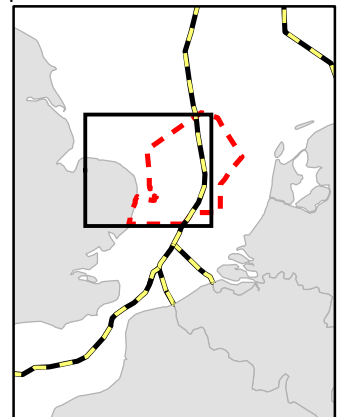
**Drawing No: P2535-ENV-001**

**E**

## Legend

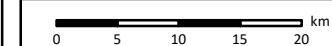
- EEZ Boundary
- EuroLink Landfall Location Options
- Offshore Study Area
- Marine Aggregate Extraction**
- Marine Aggregate Extraction
- Infrastructure**
- Planned & Active Windfarm/Cable Corridors
- SeaLink Cable Corridor
- Shipping and Navigation**
- Anchorage Area
- Traffic Separation Scheme
- Deep Water Route
- Traffic Separation Area
- Dumping Ground
- Dunwich Settlement Approximate Boundary
- Sizewell Tidally Restricted Shallow Water Area
- Environmental Designation**
- Southern North Sea Special Area of Conservation
- Outer Thames Estuary Special Protection Area
- Designation Area
- Coralline Crag Area

Note: The marine constraints shown are not exhaustive

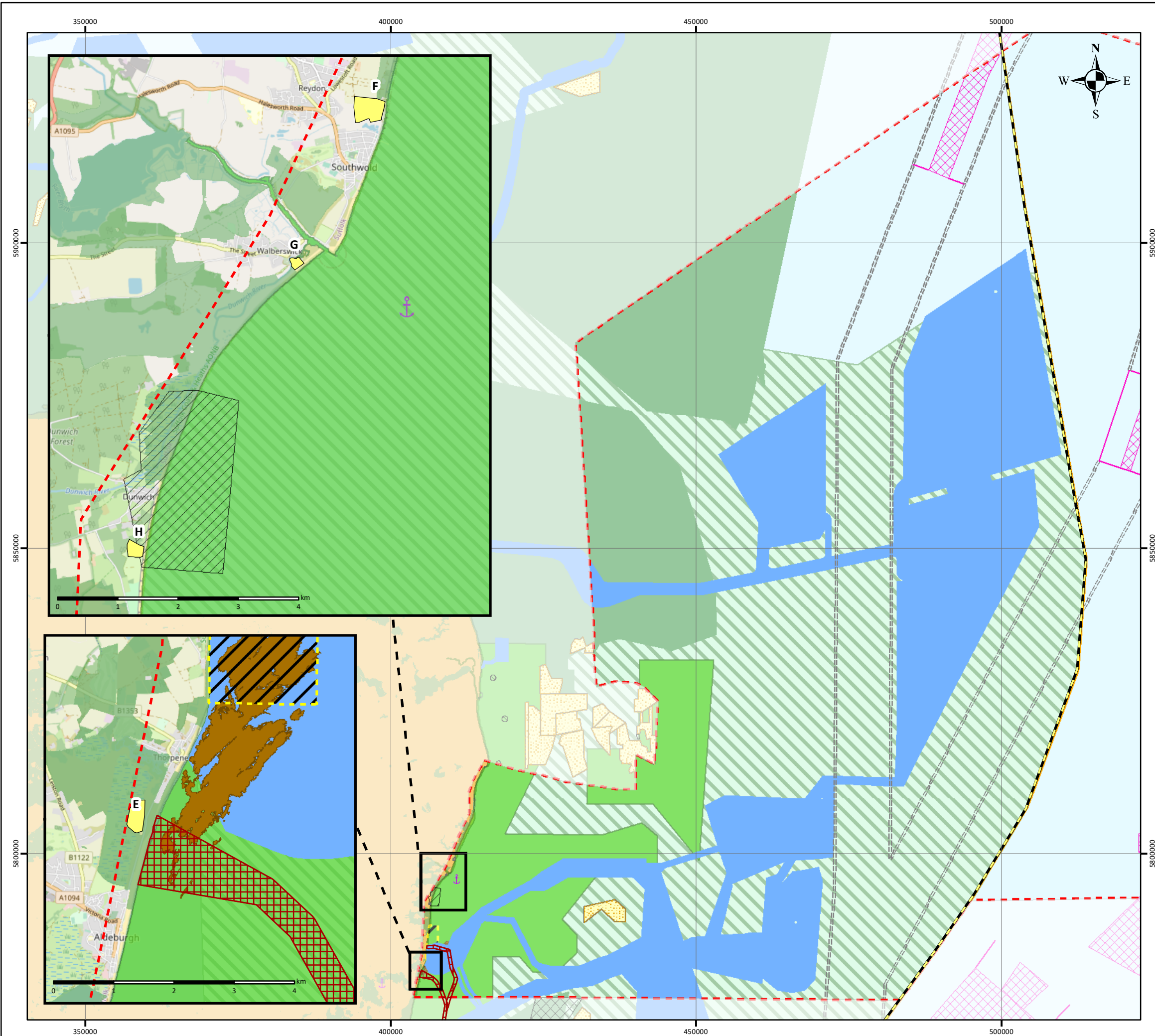


NOTE: Not to be used for Navigation

<b>Date</b>	14 October 2022
<b>Coordinate System</b>	WGS 1984 UTM Zone 31N
<b>Projection</b>	Transverse Mercator
<b>Datum</b>	WGS 1984
<b>Data Source</b>	ESRI; OSOD; KISCA; TCE: OGA; EUROPA; INCC: NE
<b>File Reference</b>	J:\P2535\Mxd_QGZ\03_ENV\ P2535-ENV-001.mxd
<b>Created By</b>	Lewis Castle
<b>Reviewed By</b>	Emma Langley
<b>Approved By</b>	Jackson Harris



© Metoc Ltd, 2022  
All rights reserved.



Contains data from UKOGD; ©Esri; © Crown copyright 2013; Service Layer Credits: © OpenStreetMap (and) contributors, CC-BY-SA; © Natural England copyright. Contains Ordnance Survey data © Crown copyright and database right [2019]. © British Crown and OceanWise, 2022. All rights reserved. License No. "M55&". Not to be used for Navigation; Copyright © KIS-ORCA; Contains data provided by The Crown Estate that is protected by copyright and database rights.