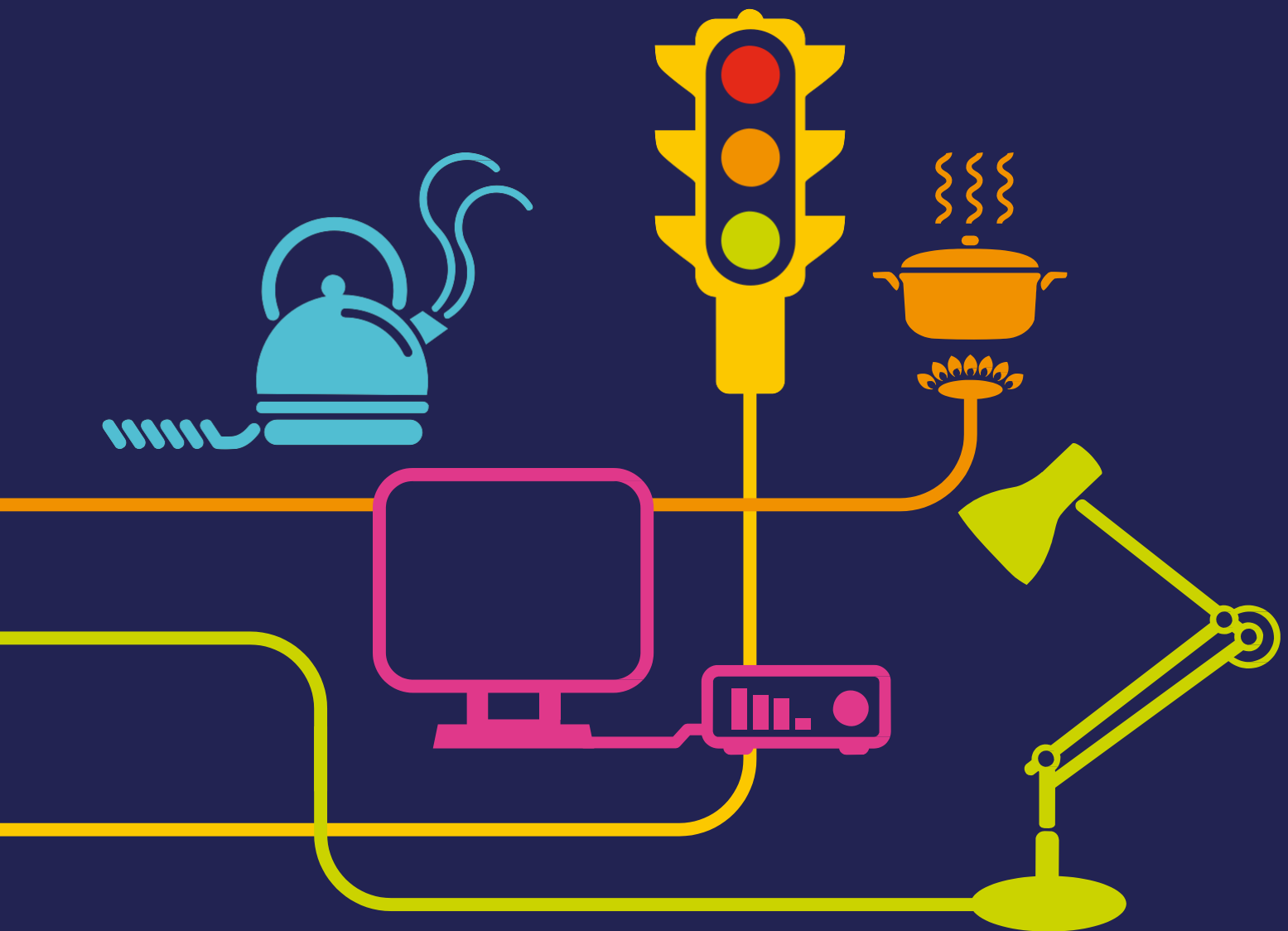


Intertrips



A guide to the services procured by National Grid to maintain system stability

“National Grid is an international electricity and gas company responsible for operating the electricity and gas transmission systems across Great Britain”

What is an Intertrip?

An Intertrip will automatically disconnect a generator or demand from the Transmission System when a specific event occurs such as a system fault. This is to relieve localised network overloads, maintain system stability, manage system voltages, and / or ensure quick restoration of the transmission system.

There are two types of Intertrips:

Operational Intertrips – those that are a condition of connection to the system

Commercial Intertrips – these may be specified at the time of connection or agreed on an ad hoc basis



What is the service?

The automatic operation of Intertrips generally requires the monitoring of all transmission circuits in a zone, which are linked with system protection arrangements. If a selected circuit trips, this will then trigger activation of the Intertrip to disconnect generation or demand.

Generally the process for operating an Intertrip is as follows:

1. A constraint is identified within a zone
2. National Grid telephones the relevant generator[s] within the zone to electronically “arm” the Intertrip
3. A fault may occur in the zone which can then trigger the Intertrip
4. The generator reconnects once they receive clearance from National Grid

The service requirements are specific to the location of the Intertrip.

How is the service procured?

The service is negotiated on an ad hoc bilateral basis, which may be specified at the time of connection to the transmission system. However, for those which have not been identified at the time of connection, these agreements may be entered into where National Grid has identified a requirement.

Payment

The payment for the service generally includes the following fees and is negotiated by the provider:

- **Arming fee** – fee payable whenever the Intertrip is armed by National Grid (£/settlement period)
- **Capability Payment** – annual fee to cover the installation of the scheme and staff training costs (£/settlement period)
- **Intertrip** – fee to cover the cost of wear and tear and any appropriate fuel costs (£/Generating Unit)

If a generator is tripped off the system for longer than 24 hours, then a “Restricted Export Level” payment can be claimed.



Contact:

Commercial.operation@nationalgrid.com

Information:

For more information on Balancing Services please visit

<http://www2.nationalgrid.com/uk/services/balancing-services/system-security/intertrips/>