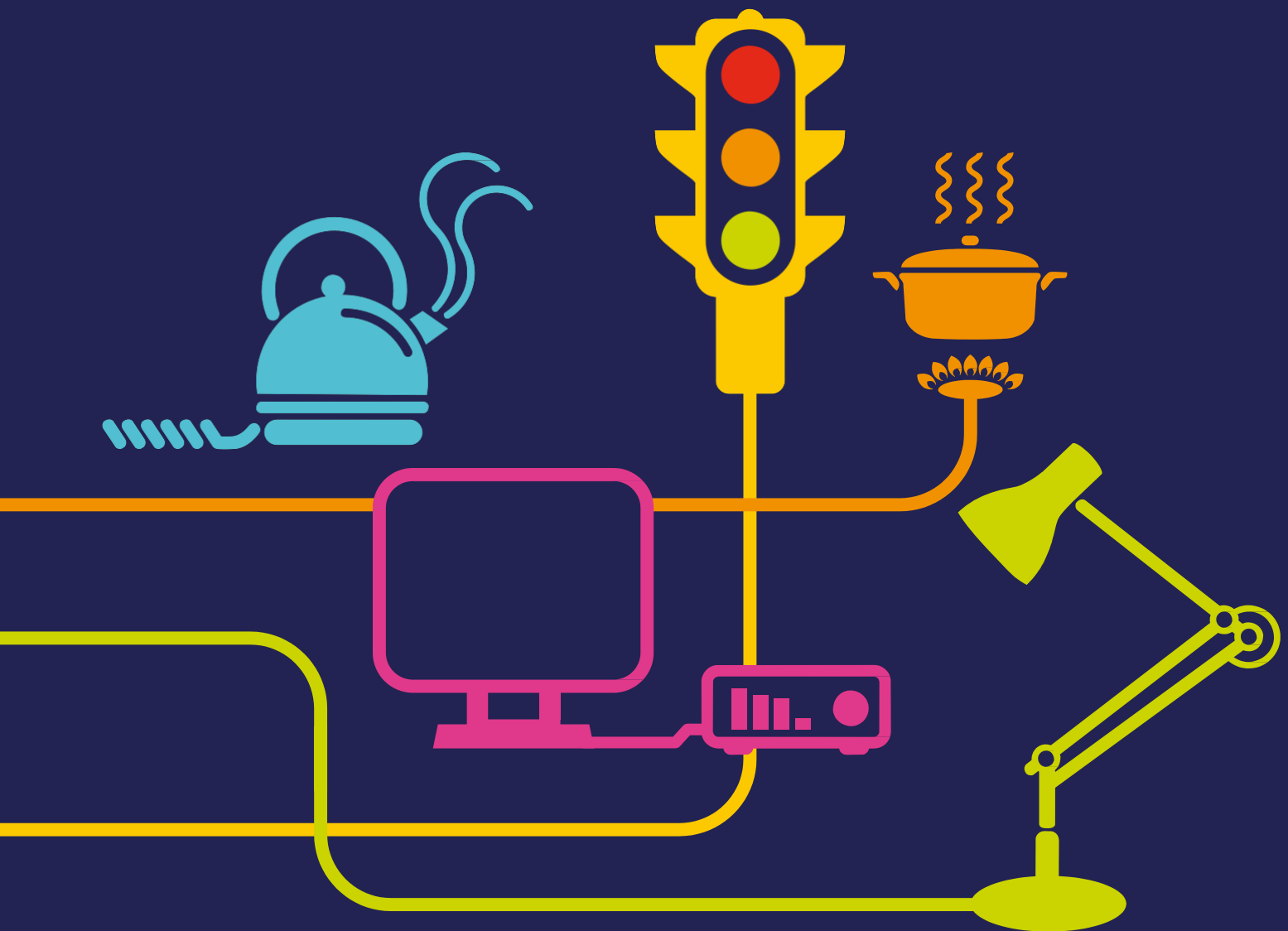


# Firm Frequency Response (FFR)



A guide to the services procured by National Grid to manage system frequency

“National Grid is an international electricity and gas company responsible for operating the electricity and gas transmission systems across Great Britain”

**How is this service different to Mandatory Frequency Response?**

Firm Frequency Response is procured to counter the same incidents as Mandatory Frequency Response – but is open to any consuming or generating plant that can meet the service requirements.



## What is the service?

FFR allows a provider to provide a service whereby they may reduce demand or increase generation, when instructed by National Grid. The service can be either:

Dynamic – energy changes in line with system frequency

Static – energy change occurs at preset frequency and remains at a set level

During utilisation of this service, National Grid would instruct the provider to set their unit into frequency sensitive mode which would be through an electronic relay. This would then automatically change the unit's output in response to the system frequency.

## How is the service procured?

FFR is procured through a monthly tender. Once service providers succeed in the pre-qualification assessment and sign onto a framework agreement, they can participate in the tender process. They can tender in for a single or multiple months. Having considered the quality, quantity and the nature of the services, National Grid will accept the most economical tender. This then becomes contractually binding.

### Payment:

FFR has a multi-part payment structure. However, most providers only tender in for availability and nomination:

**Availability Fee** (£/hr) – the number of hours of availability from a provider

**Nomination Fee** (£/hr) – for each hour utilised

### Optional fees

**Window Initiation Fee** (£/window) – for each FFR window that the provider has been instructed under.

**Tendered Window Revision fee** (£/hr) - National Grid notifies providers of window nominations in advance and, if the provider allows, this payment is payable if National Grid subsequently revises this nomination.

**Response Energy Fee** (£/MWh) – this is for non-BM providers only and is based upon the actual response energy provided in the nominated window.



**Contact:**

[Commercial.operation@nationalgrid.com](mailto:Commercial.operation@nationalgrid.com)

**Information:**

For more information on Balancing Services please visit

<http://www2.nationalgrid.com/UK/Services/Balancing-services/Frequency-response/Firm-Frequency-Response/>