

EBS - IT

1st July 2014

Holiday Inn, Winnersh

Agenda

- **1 Housekeeping and Safety moment**
- **2 Introductions**
- **3 Minutes of last meeting**
- **4 National Grid Project Structure**
- **5 Review of actions**
- **6 Current Status**
- **7 Testing update**
- **8 EDL* & EDT***
- **9 EDL* & EDT* Transition from EDT/EDL**
- **10 Transition Review**
- **11 Date of next meeting, Tuesday 30th Sept. 2014**
- **12 Any Other Business**

1. Housekeeping



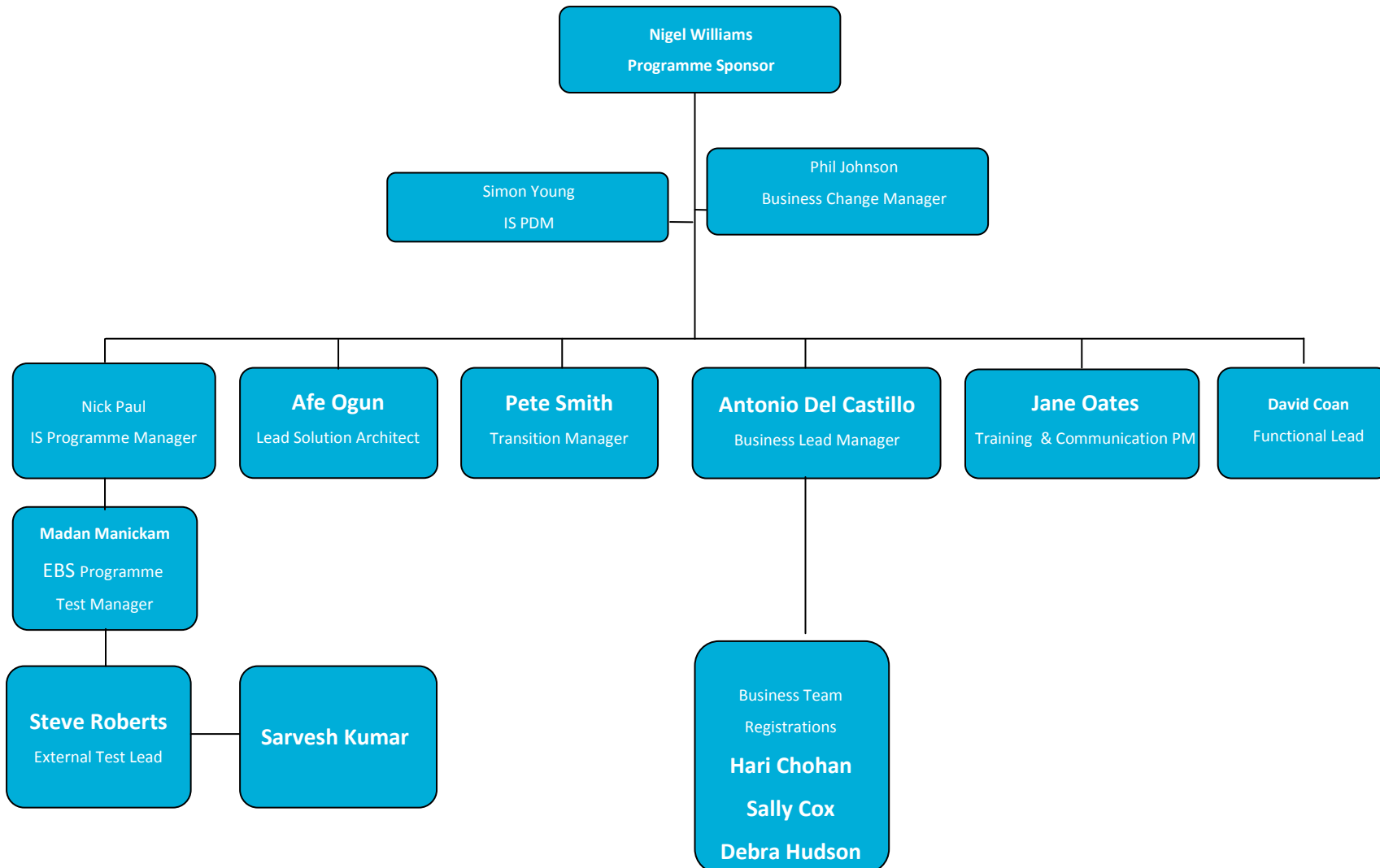
2. Introductions



3. Minutes of last meeting



4. EBS Programme Organisation



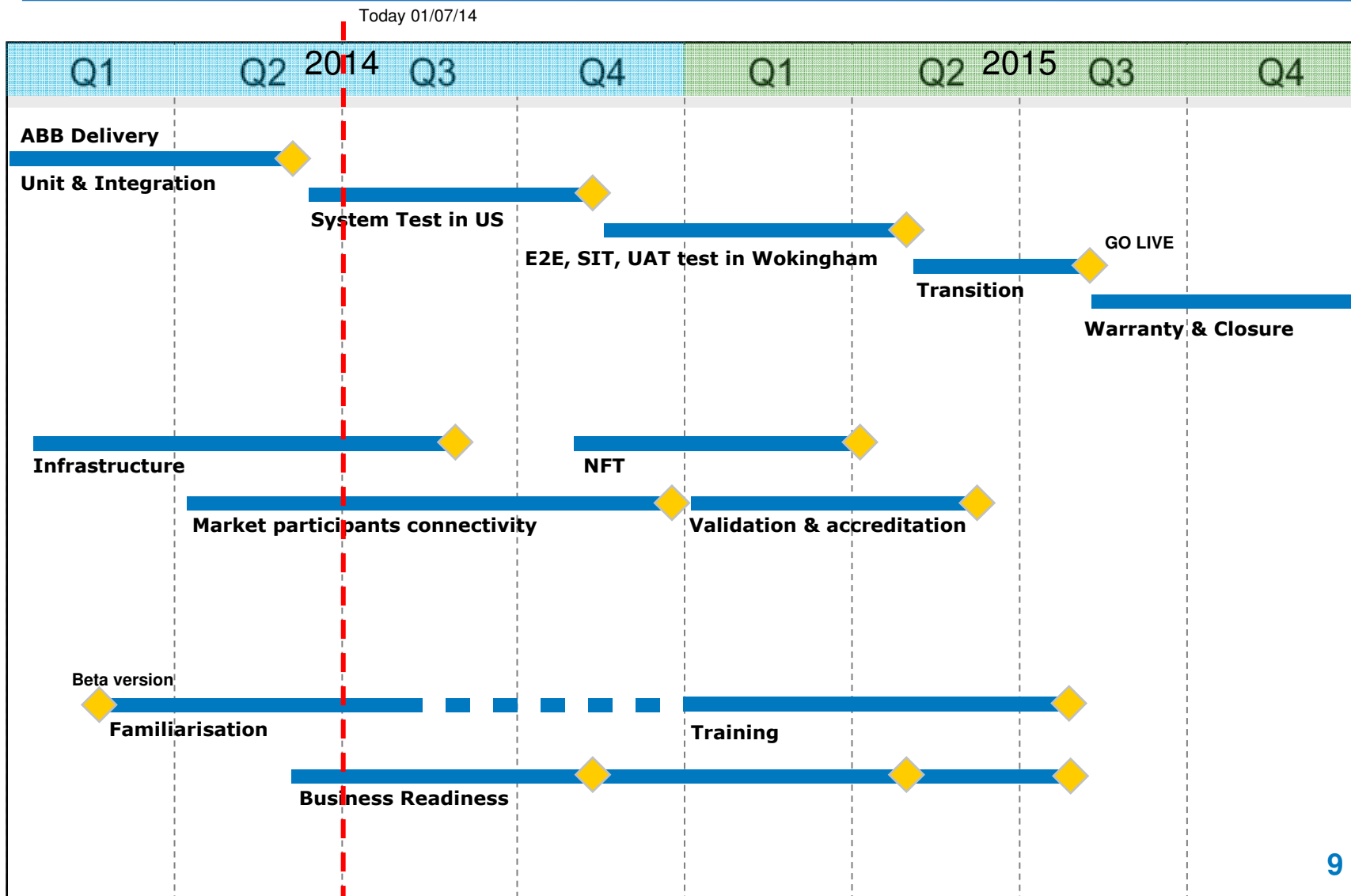
5. Review of actions



6 - Headline Summary

- Governance:
 - New plan approved in January
- Version 0.5 (beta version)
 - Just scheduling functionality
 - In operation in control room since February
 - Very well received in the Control Room
- Version 1.0
 - Currently testing in US
 - Daily report on #tests, #defects, #defects retested
- PWC Assurance Audit Headlines:

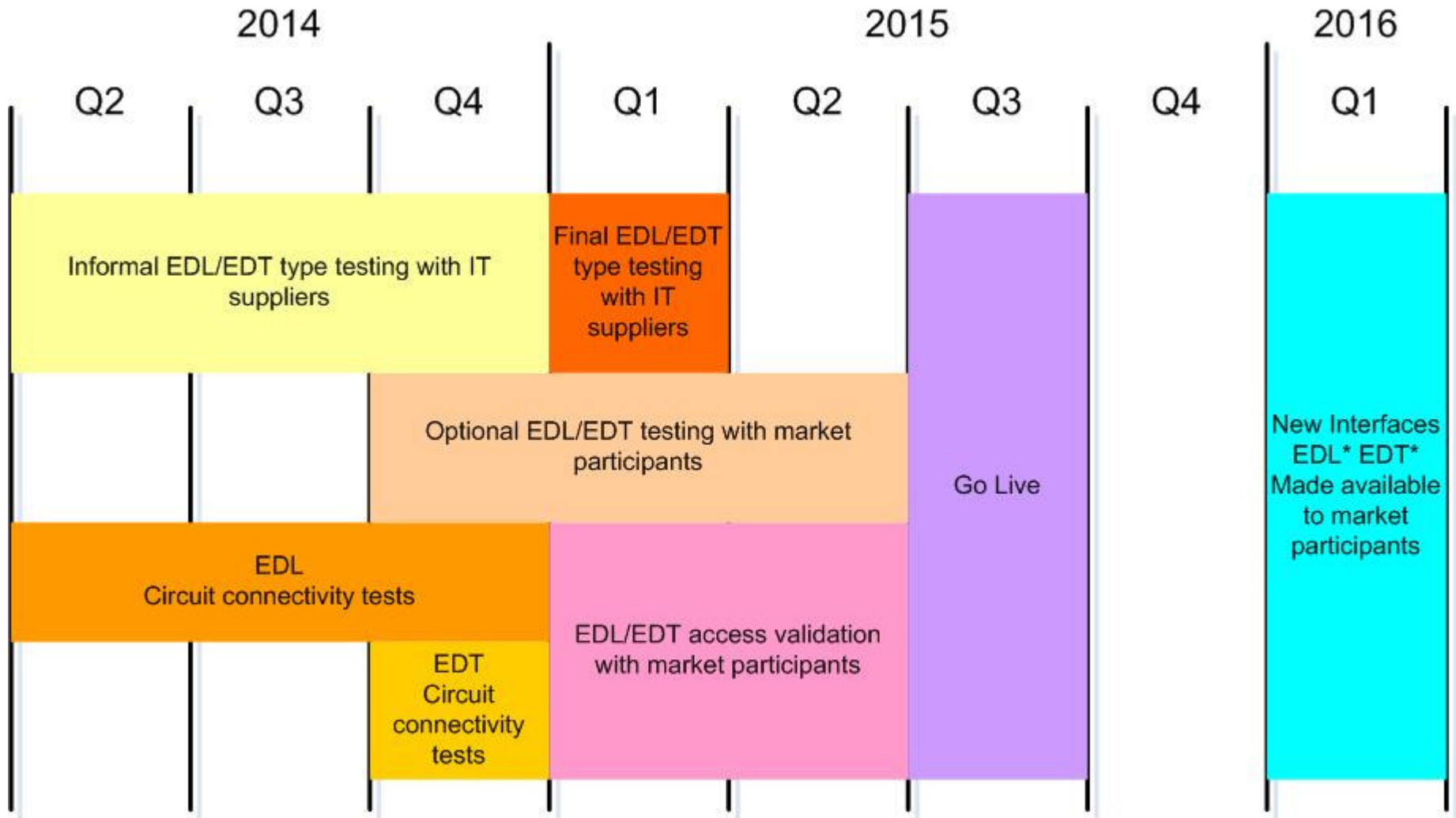
EBS High Level Baseline Plan



7 - Testing Update

Steve Roberts

High-Level Timescales



Initial Type Test Progress

- Initial EDT and EDL type tests are complete
- DIR and LS command response issues have been fixed
 - We've successfully tested it with some of suppliers affected
- We had some issues with allowing passive FTP for EDT
 - These are now fixed
 - And have re-tested with some of the suppliers affected
- FTP connection delays fixed

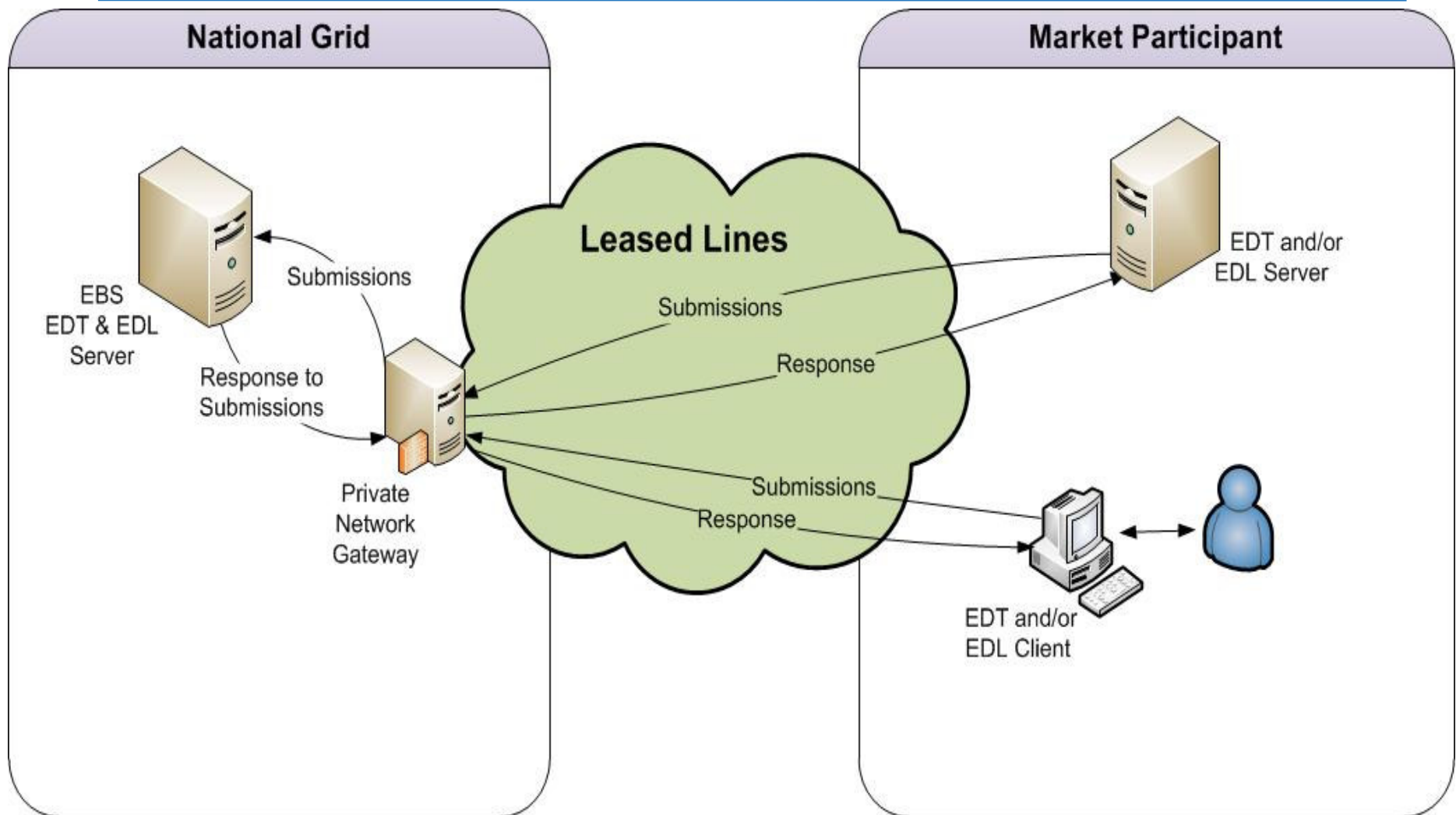
Update on Circuit Connectivity Tests

- EBS Market Participant Access document circulated
 - DNS name and IP addresses finalised
- Market Participants programming firewall + ACL
 - 70% have confirmed complete
- EDT and EDL connectivity test scripts circulated
- Commenced formal EDL circuit connectivity tests with Market Participants
 - Tested approx 60 stations using both backup and main circuits
 - Generally successful, with few observations noted

Firewall and ACL changes

- Market Participants will only have one target FTP IP address for production and one target IP address for test to submit EDT files and pick up acknowledgement files.
- Incoming FTP connection from Market Participants will be routed by a proxy into the EBS network to the correct EBS FTP servers.
- Production and Test EBS FTP IP addresses have been circulated

Overview on EDT and EDL interfaces



Next Steps

- Continue informal type-testing as required
 - Confirm defects fixed
 - Ad-hoc testing
- Planning for type-testing with a resilient EBS environment
- Need confirmation from Market Participants their firewall and ACL changes are complete
- Progress circuit connectivity tests with Market Participants

8 – EDL* & EDT*

Afe Ogun

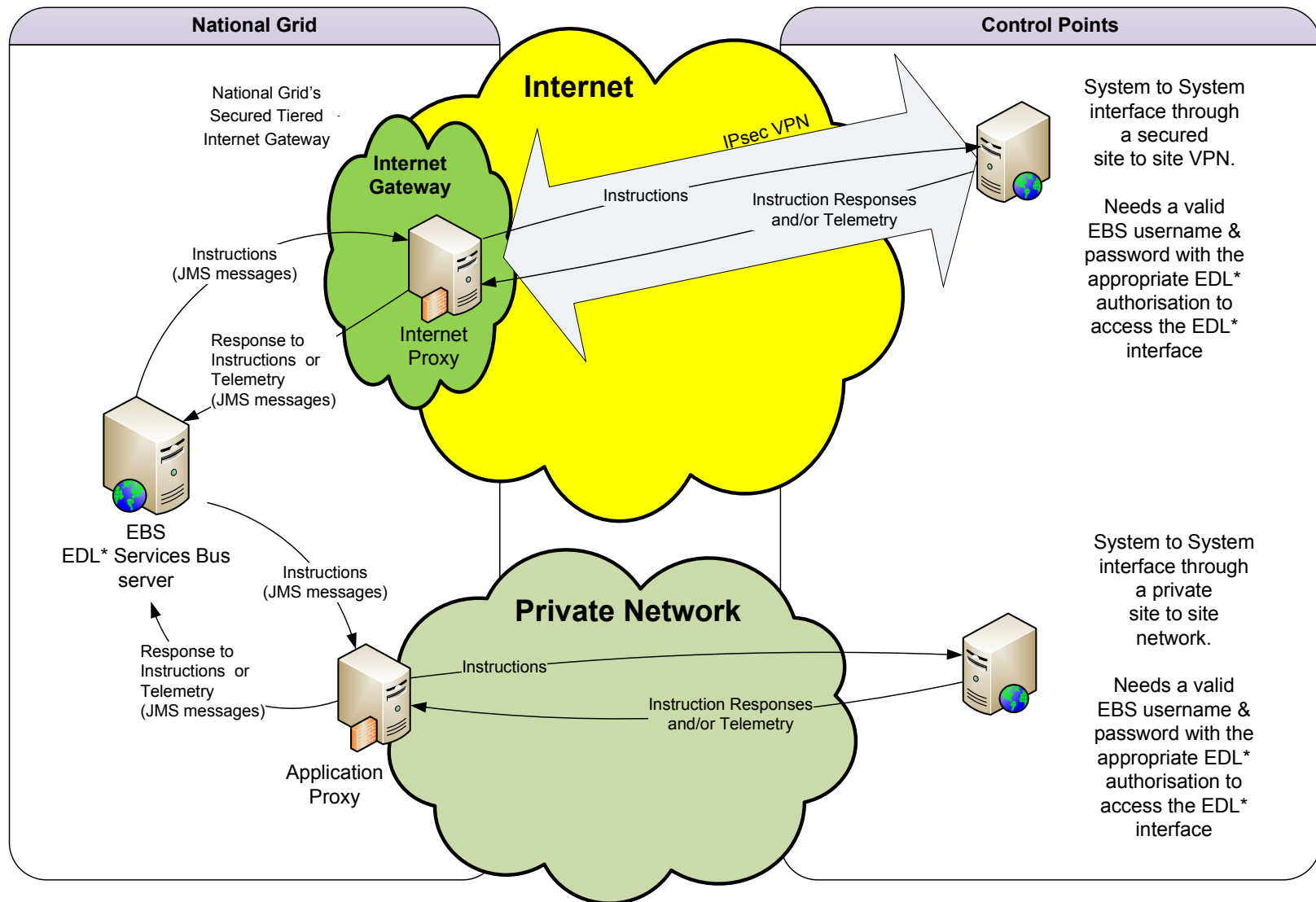
EDT* & EDL* - Toolkits

- EDT*
 - A Web Service Client Toolkit, containing sample Java software, XML configuration files and test digital certificates was distributed in October 2012
- EDL*
 - A Java Message Service (JMS) API Toolkit, containing sample Java software, API Java Class and XML configuration files was distributed in June 2014
- Test EBS System with EDT* & EDL* Interfaces
 - ABB are currently system testing EBS in Santa Clara
 - National Grid will integration test an EBS System with EDT* & EDL* interfaces in Q4 of 2014
 - EDT* & EDL* interfaces will be made available for test by market participants and their software suppliers early in 2015

EDT* & EDL* - Supplier connectivity

- EDT* Interface will be accessible to Market Participants and their software suppliers via:
 - The existing private leased lines
 - An IPSec VPN between Market Participants and National Grid
 - Web Browser based SSL VPN
- EDL* Interface will be accessible to Market Participants and their software suppliers via:
 - The existing private leased lines
 - An IPSec VPN between Market Participants and National Grid
- Technical questionnaires to obtain IPSec VPN setup information was sent out in May 2014, to the four interested software suppliers

EDL* Interface Overview



9 – EDL* & EDT* Transition from EDT/EDL

- EBS Go Live Interfaces
 - EBS will go live with the same interfaces to Market Participants as the BM system
 - EDT
 - EDL
- Six months after Go Live (Dependent on industry change CP1345)
 - National Grid will make available to Market Participants the new EBS interfaces
 - EDT*
 - EDL*

10 – Transition Review

Pete Smith

EBS Transition – Strategy (1)

- Strategy unchanged
 - No reason to divert from original agreed strategy
- Phased transition
 - New/changed data feeds from internal interfacing systems implemented as early as possible
 - New/changed internal business processes implemented as early as possible
 - No external impact of early transition
- Extended period of parallel operation
 - Dual feeds of operational data
 - Externally submitted data replicated

EBS Transition – Strategy (2)

- Low risk approach – risks reduced by
 - Extensive tests and trials of all transition processes
 - External end-to-end Access Validation in transition phase
 - All potential transition scenarios rehearsed
- Low impact on external parties
 - No ‘big bang’
 - No external change at the point of Go Live
 - Outage time on Go Live day similar to BM upgrade/maintenance outages
- No Go Live impact for external parties
 - Third parties will notice no change after Go Live

EBS Transition – Progress

- Updated internal interfacing systems already going live
 - A number of internal system already updated
 - Design allows dual feeds to both BM & EBS
- Prototype 'Beta' EBS System implemented
 - Early validation of data migration process
 - Use in familiarisation & training for Control Room
 - Witnessing & use of new business processes
 - EBS System exercised early with operational data
- EBS software release to safely permit EDL Access Validation in test at National Grid

EBS Transition – External Impact – nationalgrid a reminder

- Participation in external testing
 - Ongoing
- Participation in Access Validation
 - Starts approximately 17 weeks before Go Live
 - Three planned phases of EDL A.V. (during BM outages)
 - Three planned phases of EDT Access Validation
- Participation in post Go Live migration
 - EDL migration requires no Participant activity
 - EDT migration requires;
 - Update to EDT Password
 - Update target address

EBS Transition – External Impact - nationalgrid

Timeline

- *Go Live -24 weeks* - National Grid issues draft Transition & Communication Plans to external parties
- *Go Live - 20 weeks* - National Grid issues EDT login credentials to Market Participants
Go Live -20 weeks - National Grid issues Access Validation Plan & script(s)
- *Go Live -17 weeks through Go Live -7 weeks* - Market Participants & National Grid perform EDT & EDL Access Validation
- *Go Live -6 weeks* - National Grid issues EDT Migration plan
- *Go Live -5 weeks* - National Grid issues final Transition & Communication Plans to external parties
- *Go Live*
- *Go Live +10 days* - Market Participants migrate EDT from BM to EBS
- *Go Live +6 months* - Market Participants start move to EDT*, EDL* and self-registration

11- Date of next meeting

Antonio del Castillo

Date of next meeting

- We propose that the next meeting is on September 30th
- Physical or virtual?

12 - Any Other Business

Antonio del Castillo