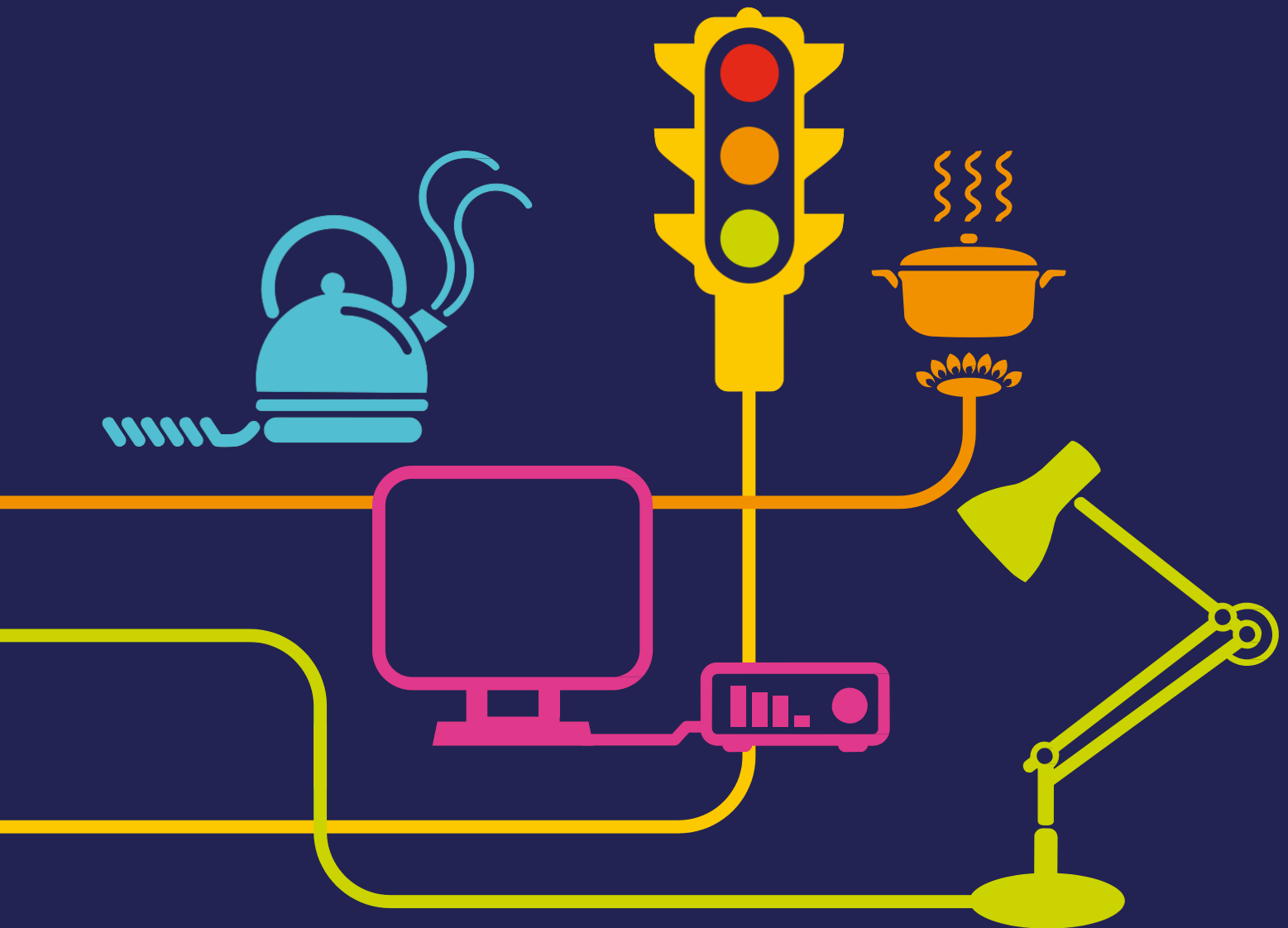


Black Start



A guide to the services procured by National Grid to recover from a shutdown of the transmission system

“National Grid is an international electricity and gas company responsible for operating the electricity and gas transmission systems across Great Britain”

What is black start?

Black Start is the procedure to recover from a total or partial shutdown of the GB Transmission System which has caused an extensive loss of supplies. This entails isolated power stations being started individually and gradually being reconnected to each other in order to form an interconnected system again.



What is the service?

In the event of a Black Start situation, the service requires the provider to start up its main generator(s) in order to power up sections of the National Transmission System and distribution network. This service would be initiated under the instruction of National Grid and proceeds under the general guidance of a site specific restoration plan.

The Black Start generator may also be required to provide start up supplies to other power stations as the system restoration progresses and will eventually be required to connect to other power islands.

How is the service procured?

The Black Start service is procured from generators that have the capability to start main blocks of generation from an on-site auxiliary generator, without reliance on external site supplies. For example, they may have a diesel generator.

Where a new generator is sited in a strategic location, National Grid will discuss its potential requirement for a Black Start service during the connection application process, prior to construction.

For an existing station, National Grid will contact the potential provider to declare National Grid's interest in a future service. A provider may also indicate to National Grid that they are interested in providing a Black Start service.

Black Start will be procured on a bilateral basis to meet the requirements of National Grid's Black Start strategy. National Grid may discuss the provision of a Black Start service with one or more potential providers at the same time to ensure the most economic and efficient solution.

Payment

There are a number of payments which may be available depending on the type, age or status of the generator:

Availability – this will be paid on £ per settlement period (half an hour)

Exercise price – this is paid when a unit is used for a Black Start test (£/MWh)

Contribution sums – this is an optional payment which may be made by National Grid to a provider to contribute towards the installation of equipment to provide the Black Start service



Contact:

Commercial.operation@nationalgrid.com

Information:

For more information on Balancing Services please visit

<http://www2.nationalgrid.com/UK/Services/Balancing-services/System-security/Black-start/>