

Operational Forum Meeting



Wednesday 11th July 2012, 10:30AM

Radisson Grafton Hotel, 130 Tottenham Court Road, London.

System Management Principles Statement



System Management Principles Statement

- Compliance report for April, May and June 2012
- Summary of balancing actions and breaches for April, May and June 2012
- Performance compared to last year

Summary Report

	April 2012	May 2012	June 2012
Total Number of Buy Actions	16	27	19
Total Number of Sell Actions	14	29	13
Total	30	56	32

	April 2012	May 2012	June 2012
Number of Material Breaches	0	0	0
Number of Non-Material Breaches	0	0	0

2011 / 2012 Comparison

	June 2011	June 2012
Number of Balancing Actions (Calendar year to date)	188	205
Number of Material Breaches (Calendar year to date)	0	0
Number of Non-Material Breaches (Calendar year to date)	0	0

Operational Overview



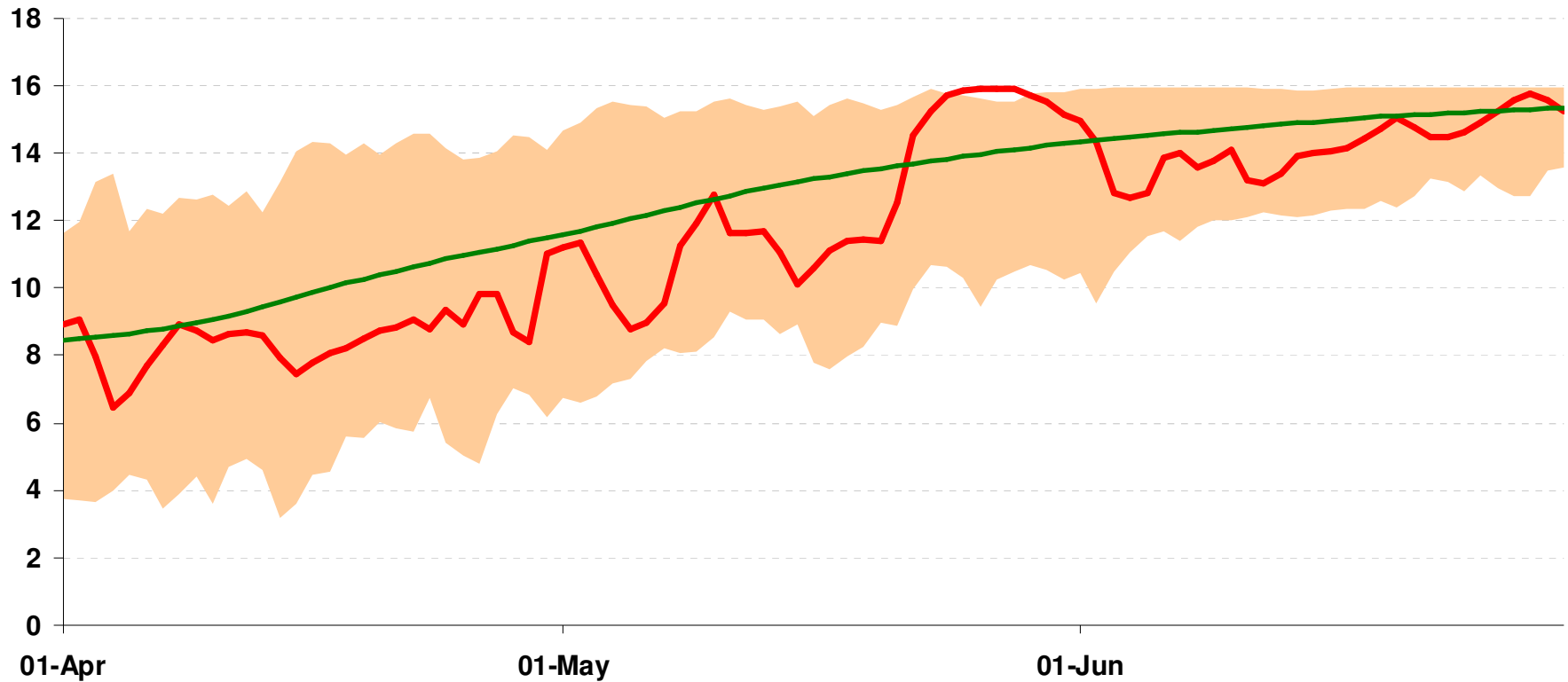
Weather



National Composite Weather

April to June 2012 Vs Historical Range

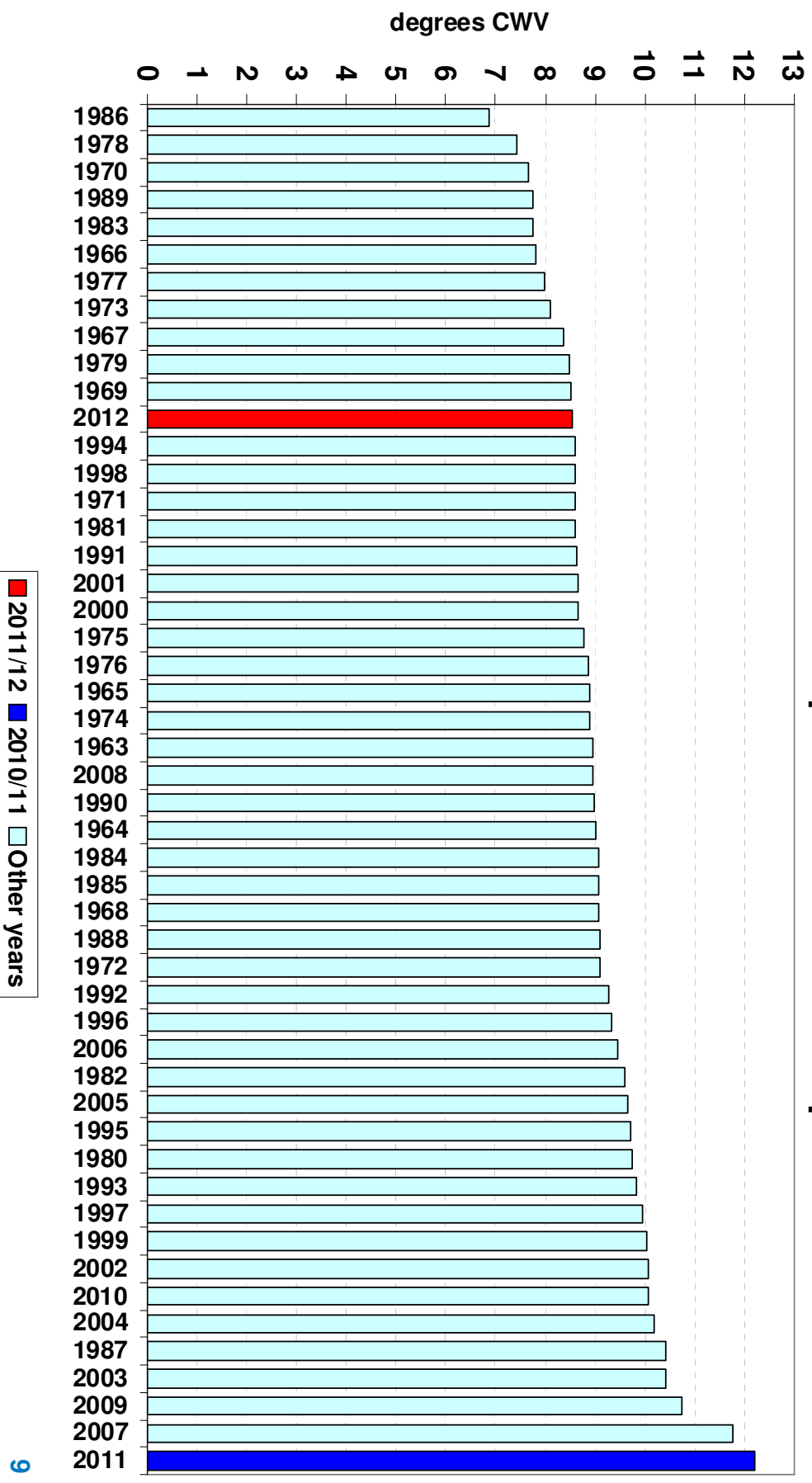
National Composite Weather
2012 compared to 1929 to 2011



Historical range Actual Seasonal Normal

Mean Composite Weather Variables April 2012 Vs Previous Yrs.

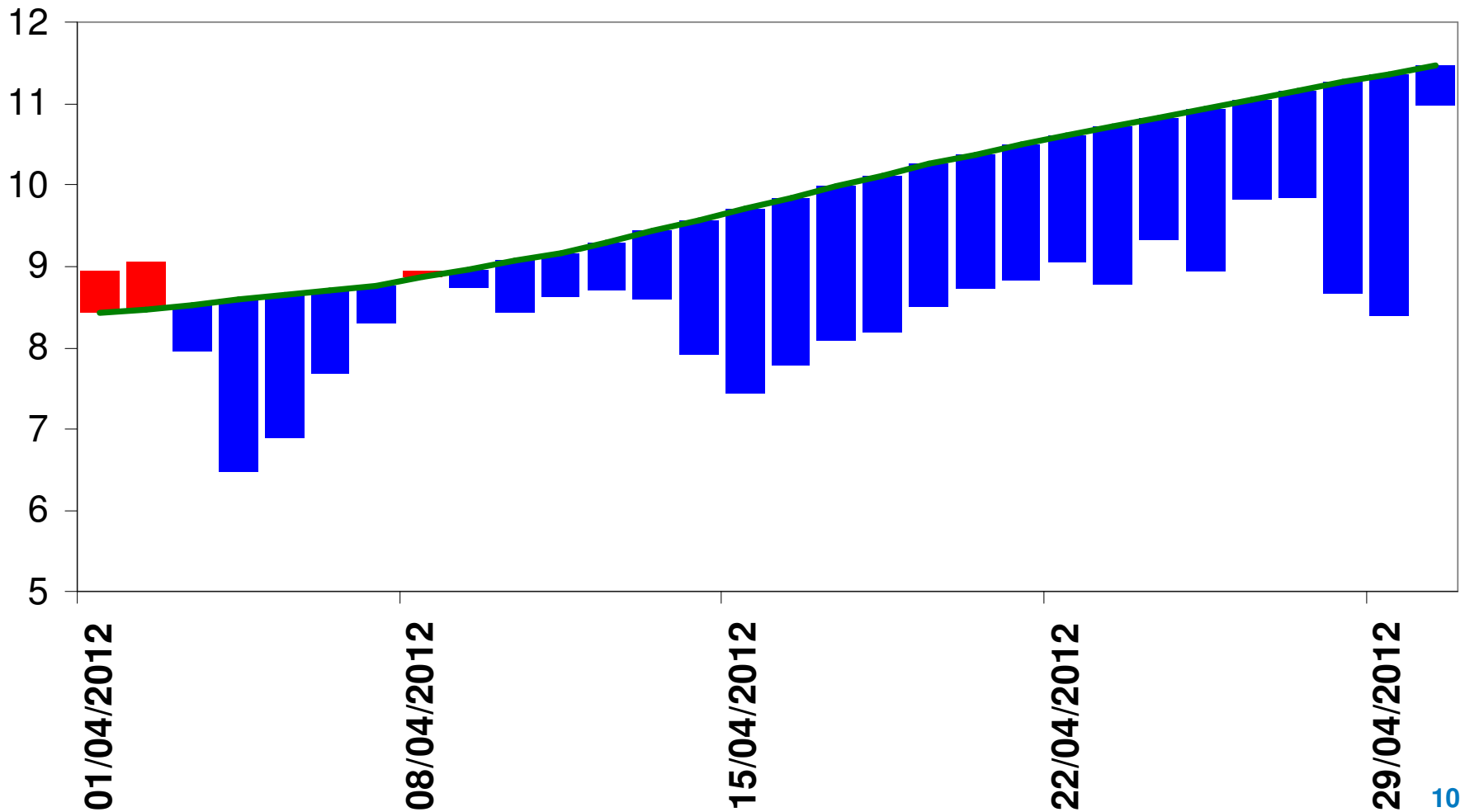
Mean National Composite Weather for April



Composite Weather Variables

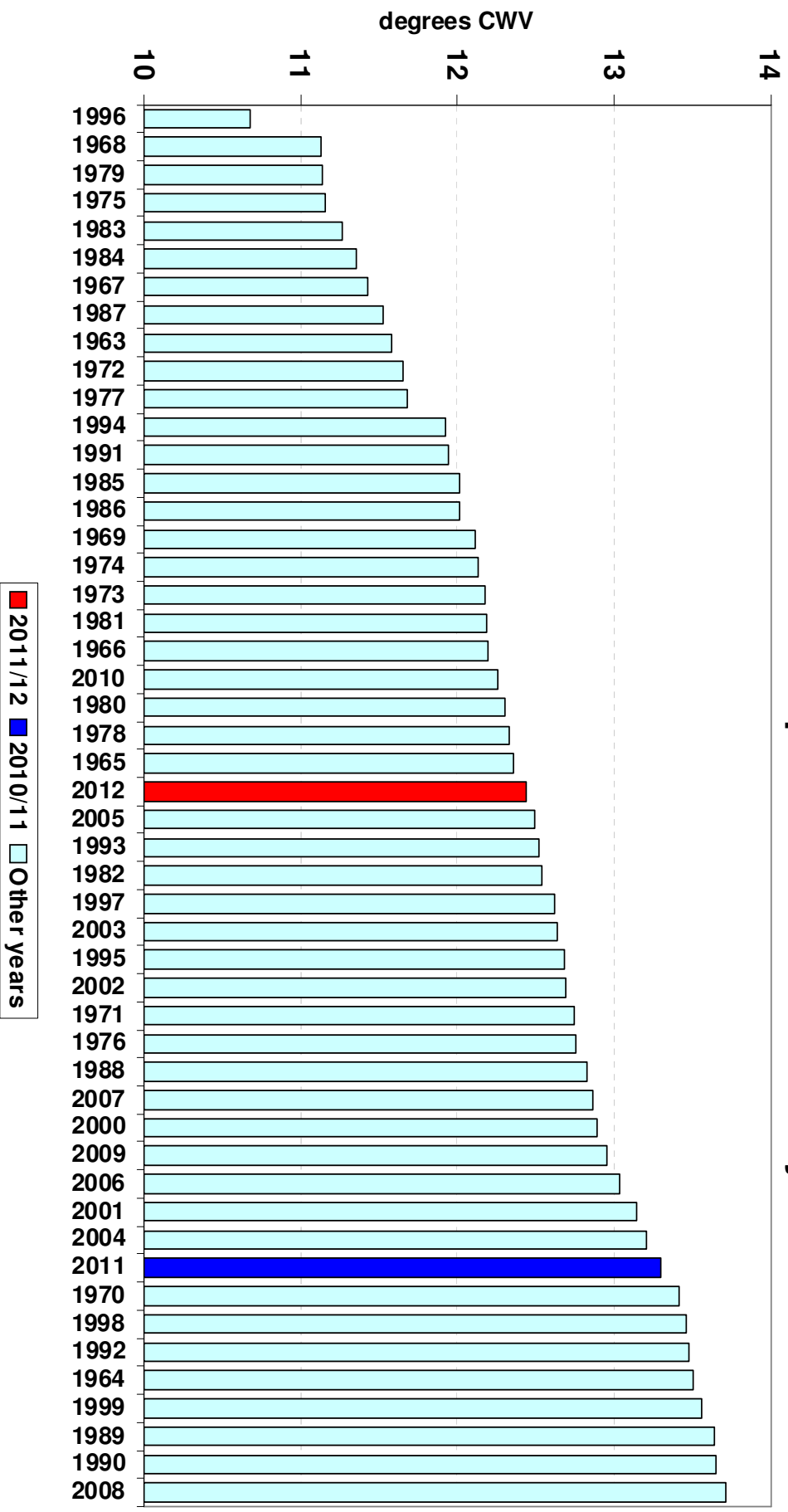
April 2012

National CWV and EP2 SNCW



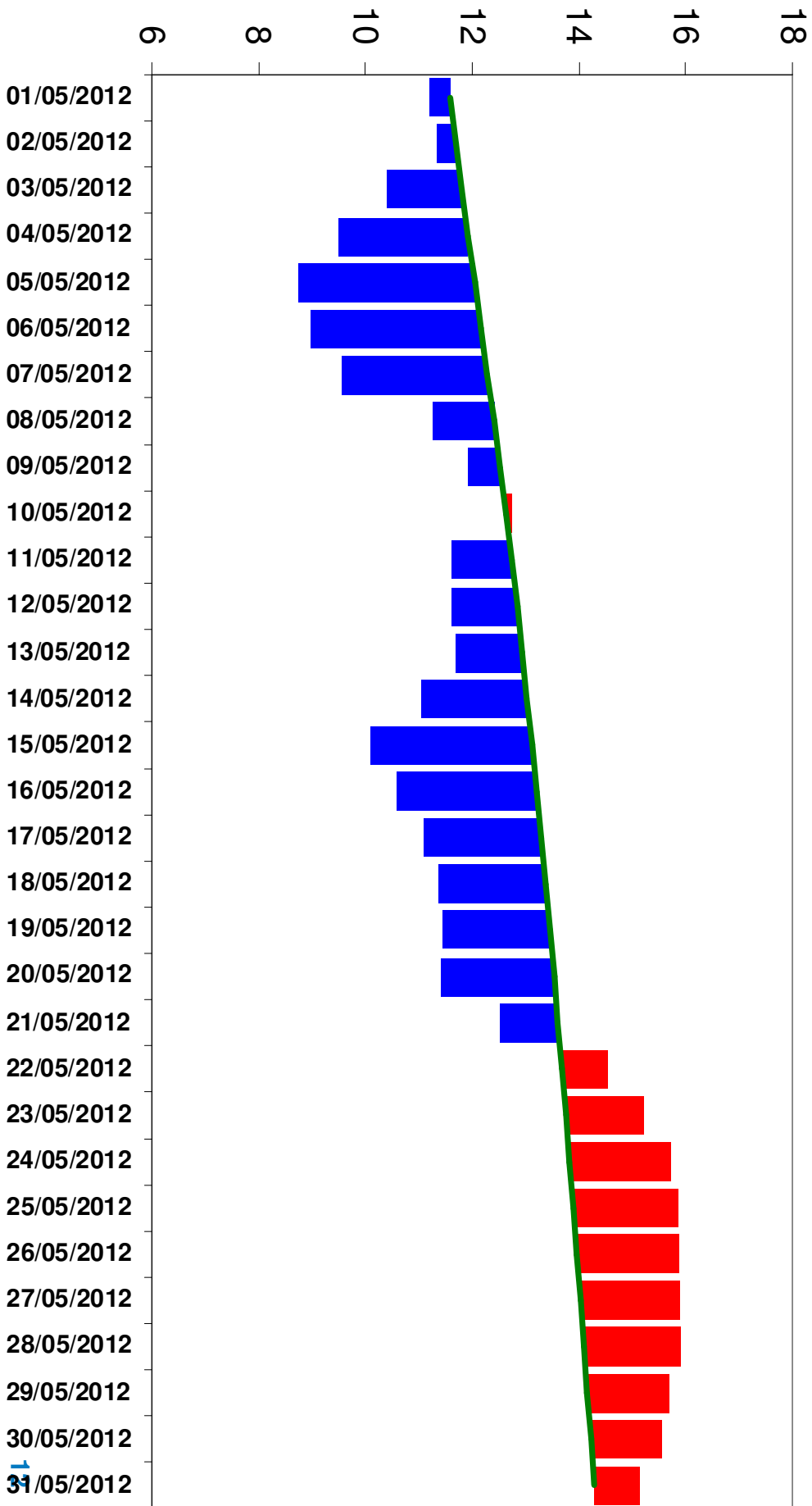
Mean Composite Weather Variables May 2012 Vs Previous Yrs.

Mean National Composite Weather for May



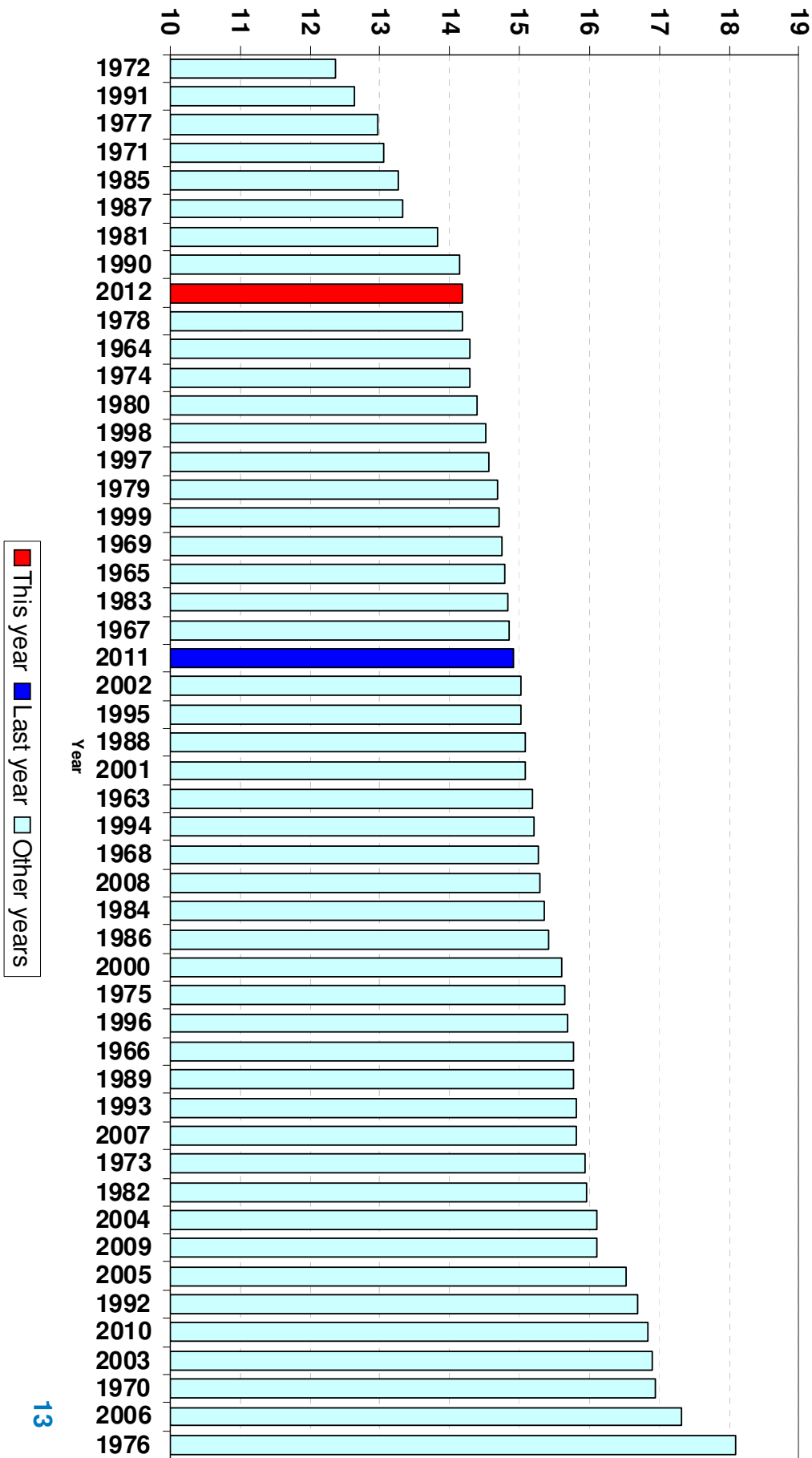
Composite Weather Variables May 2012

National CWV and EP2 SNCW



Mean Composite Weather Variables June 2012 Vs Previous Yrs.

Mean National Temperature for June

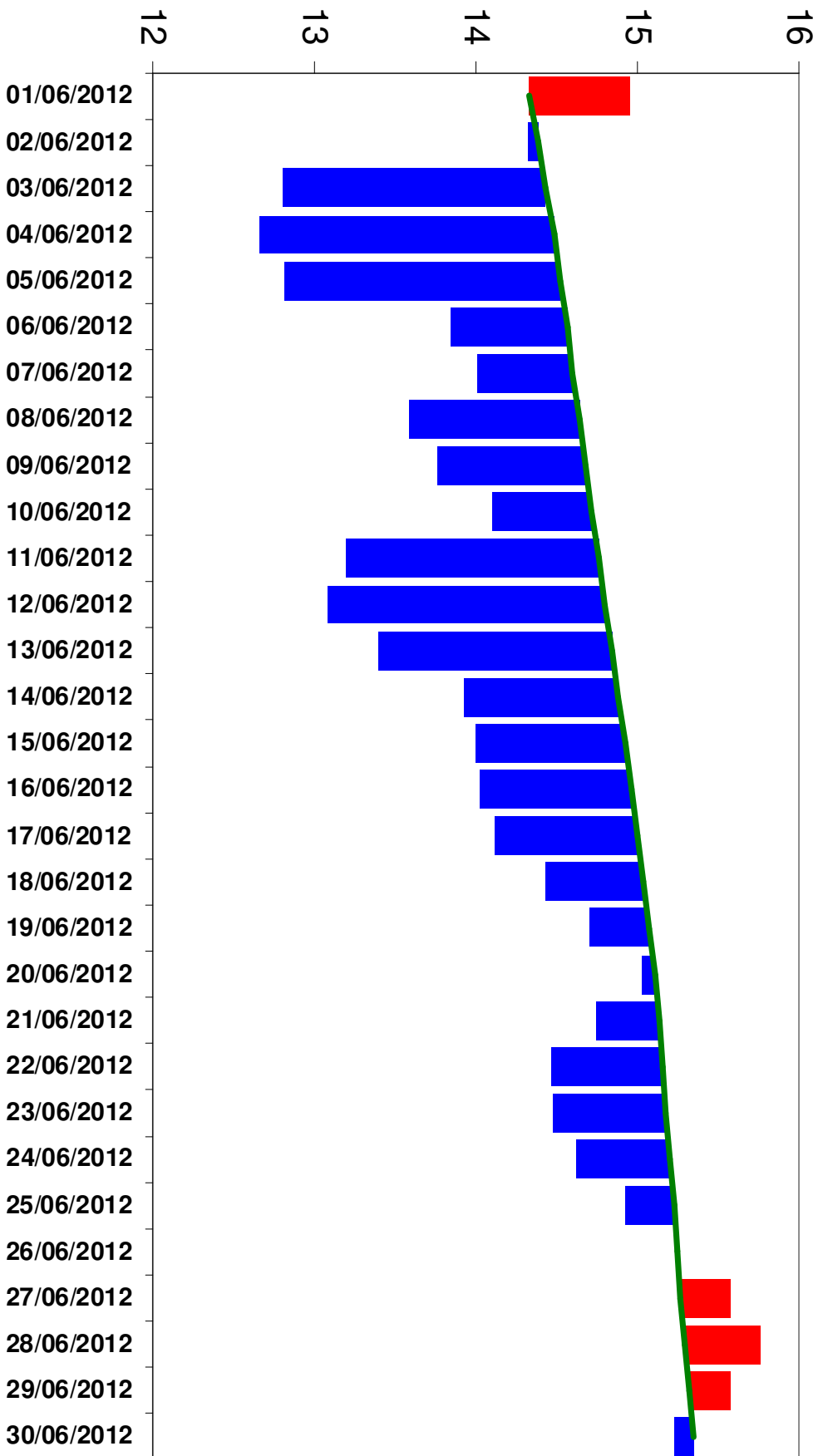


Composite Weather Variables

June 2012

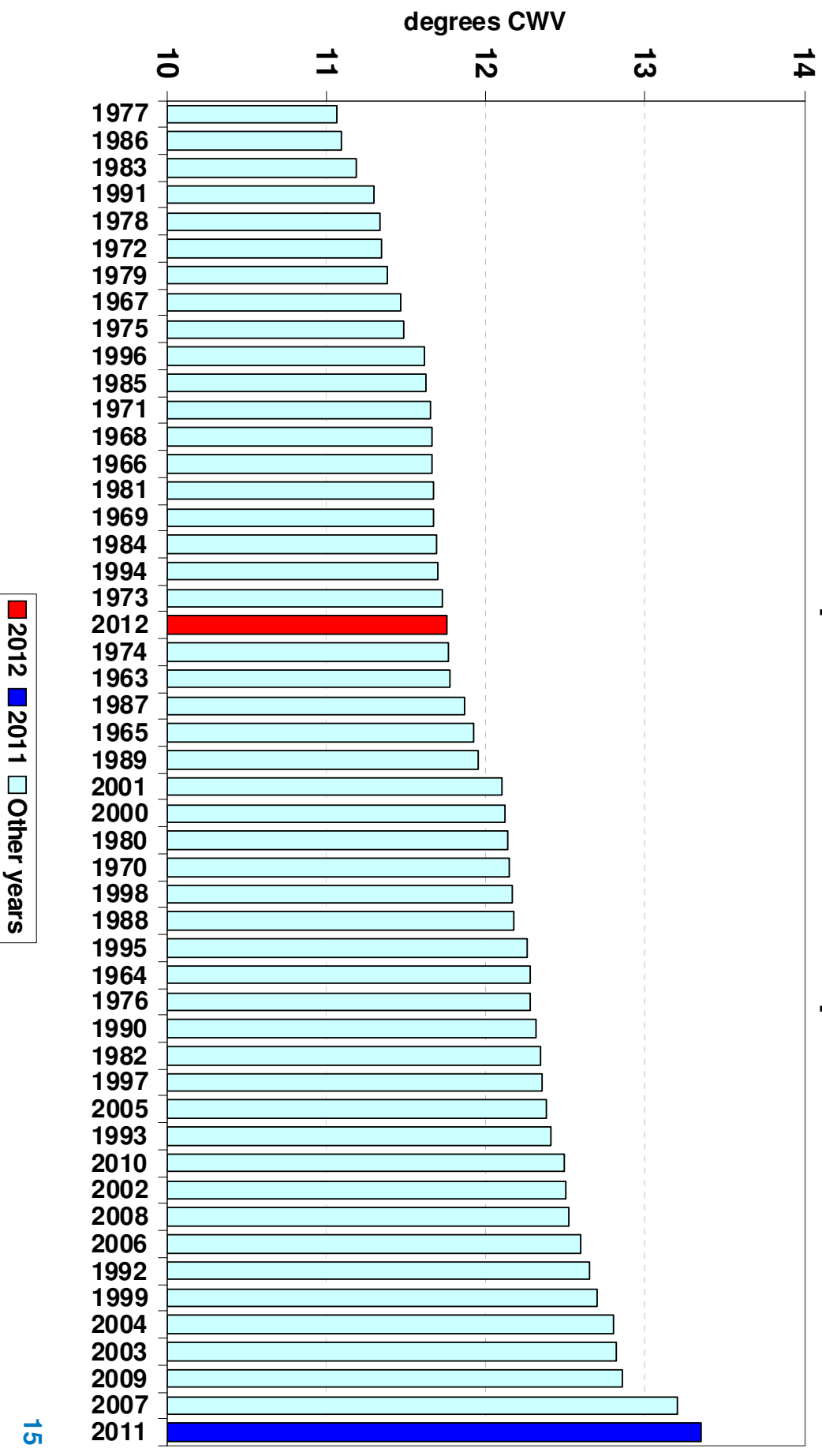


National CWV and EP2 SNCW



Mean Composite Weather Variables April-June 2012 Vs Previous Yrs.

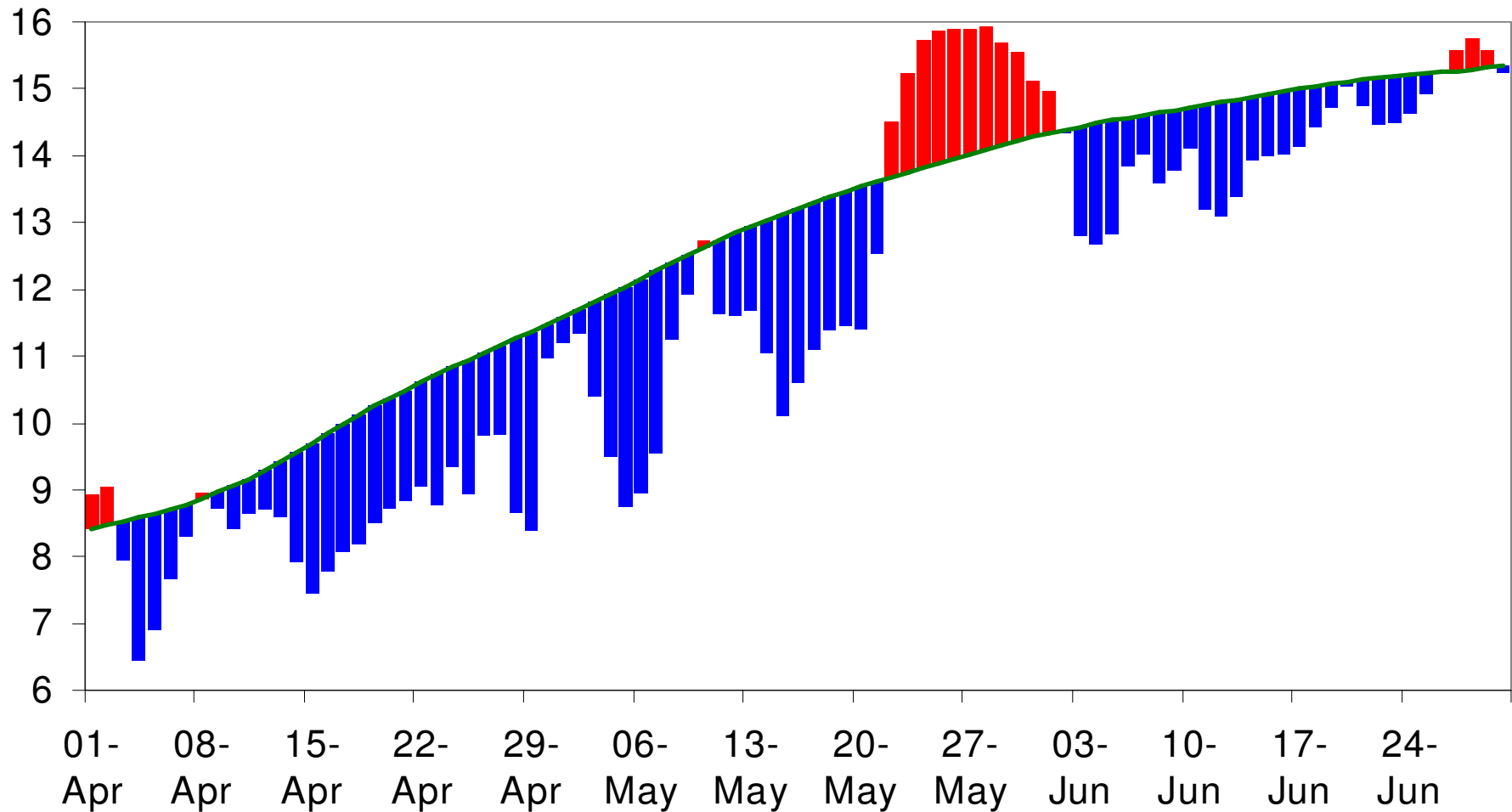
Mean National Composite Weather for April to June



Composite Weather Variables

April-June 2012

National CWV and EP2 SNCW

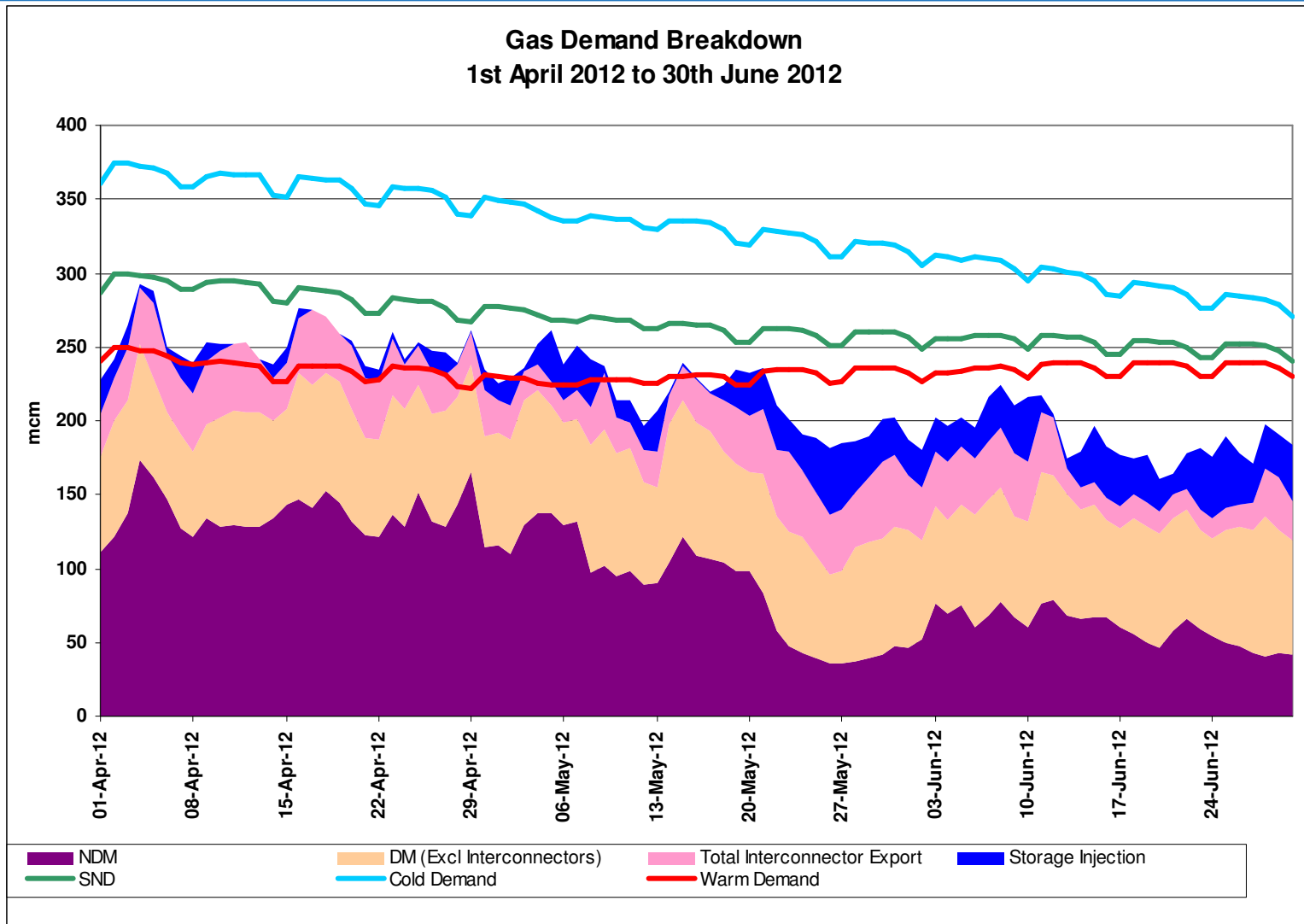


Demands



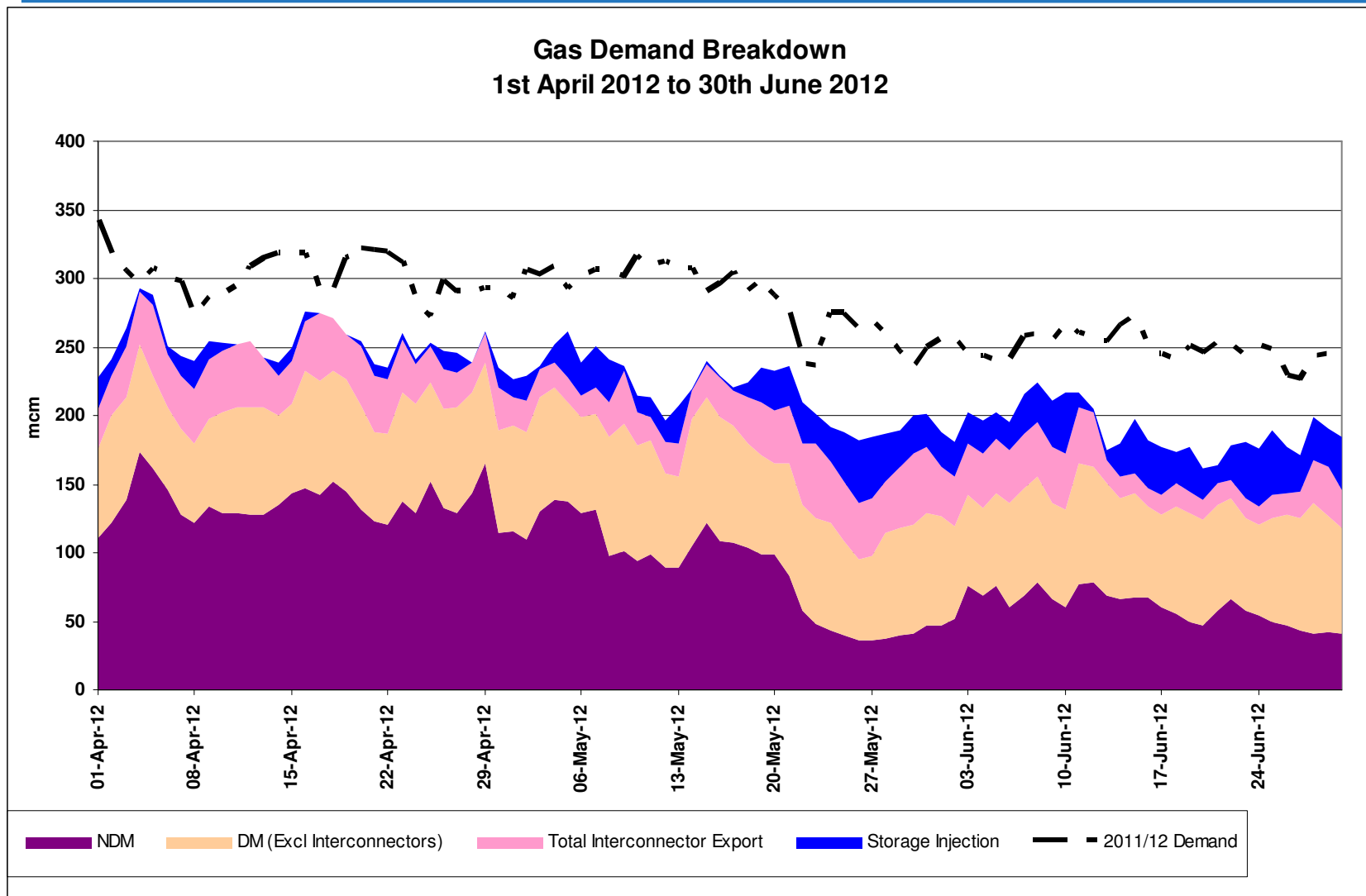
Gas Demand Breakdown

1st April 2012 to 30th June 2012



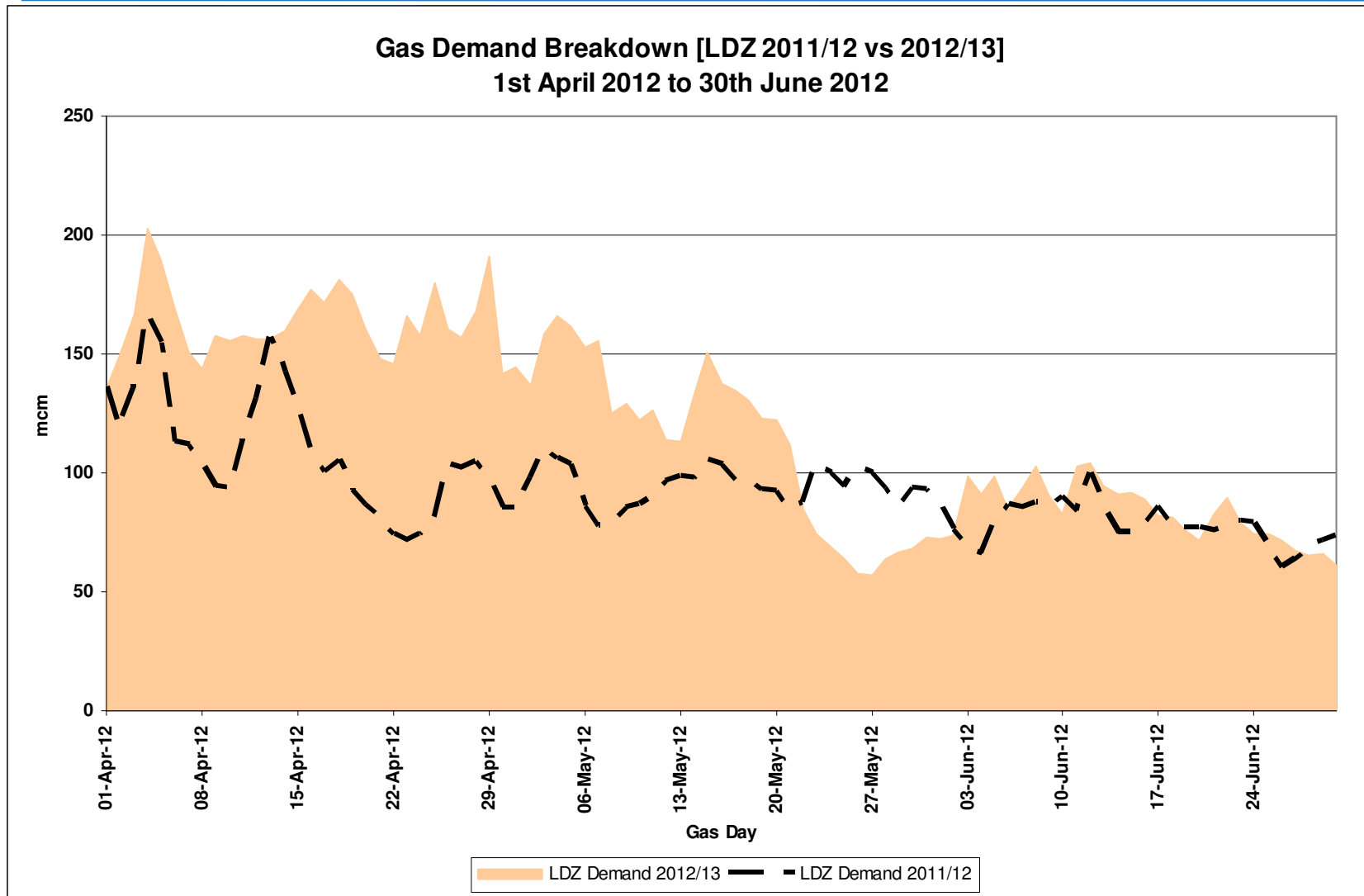
Gas Demand Breakdown

2011/12 Vs 2012/13



LDZ Demand

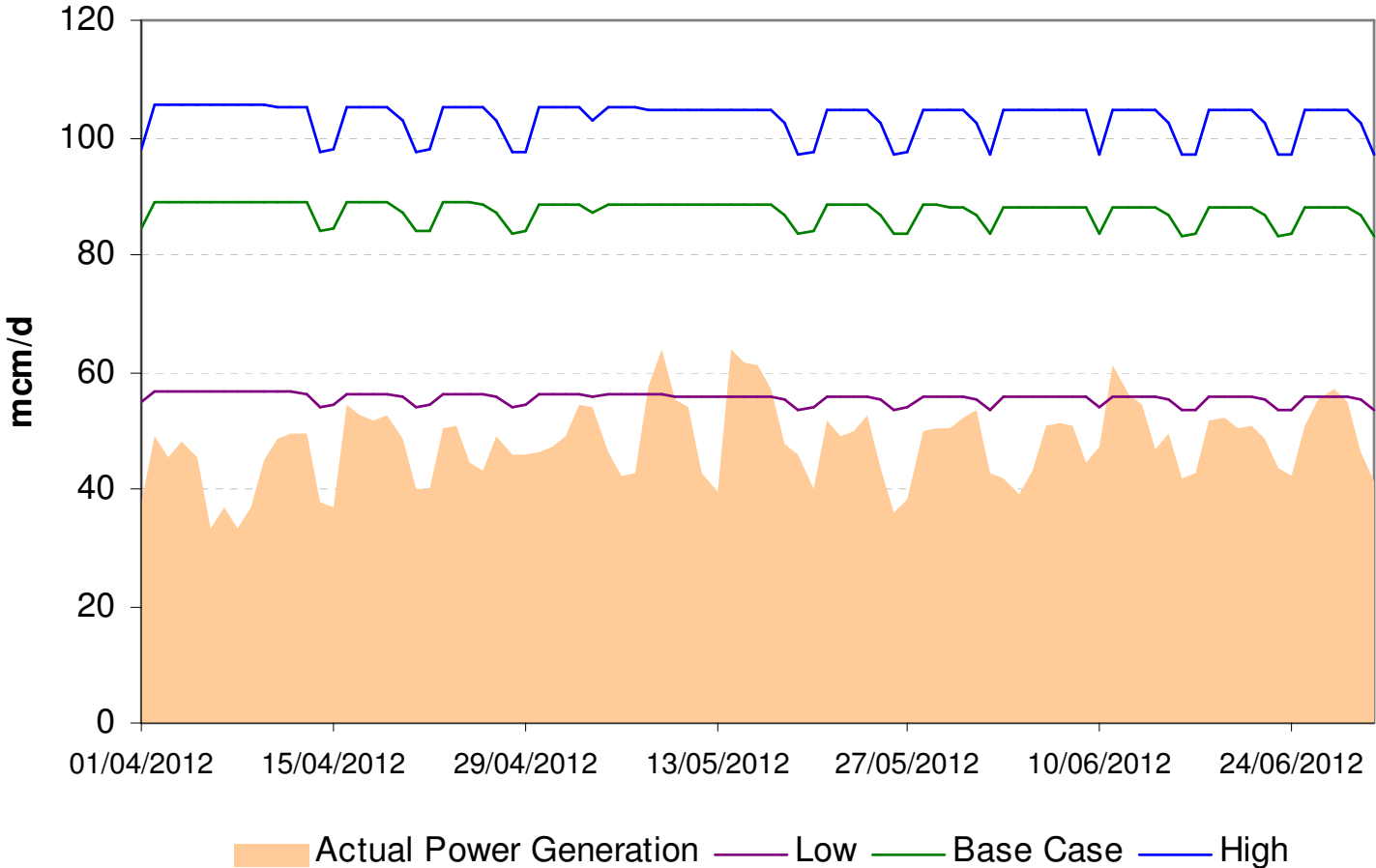
2011/12 Vs 2012/13



Power Generation

1st April 2012 to 30th June 2012

Gas Consumption for Power Generation

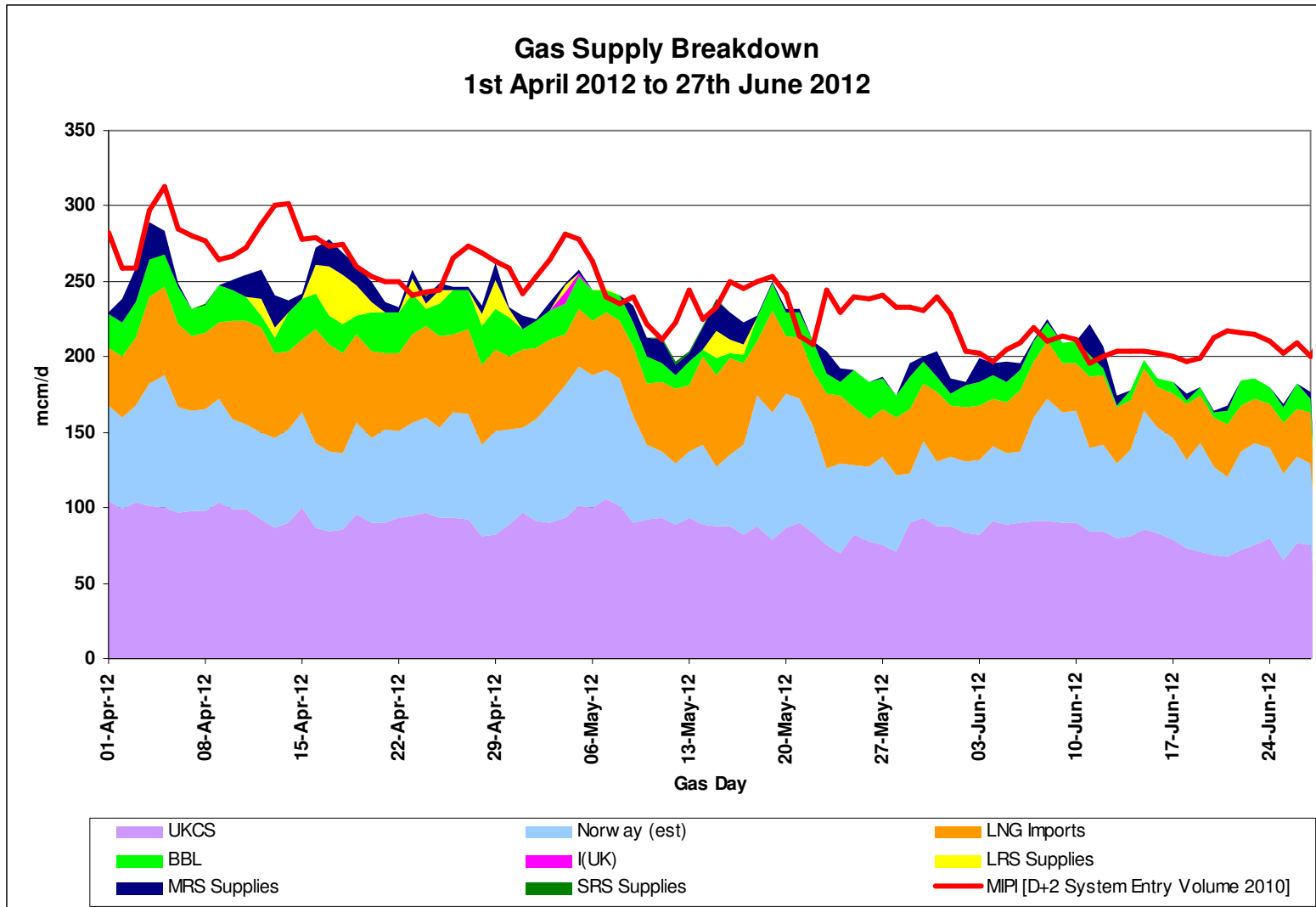


Supplies



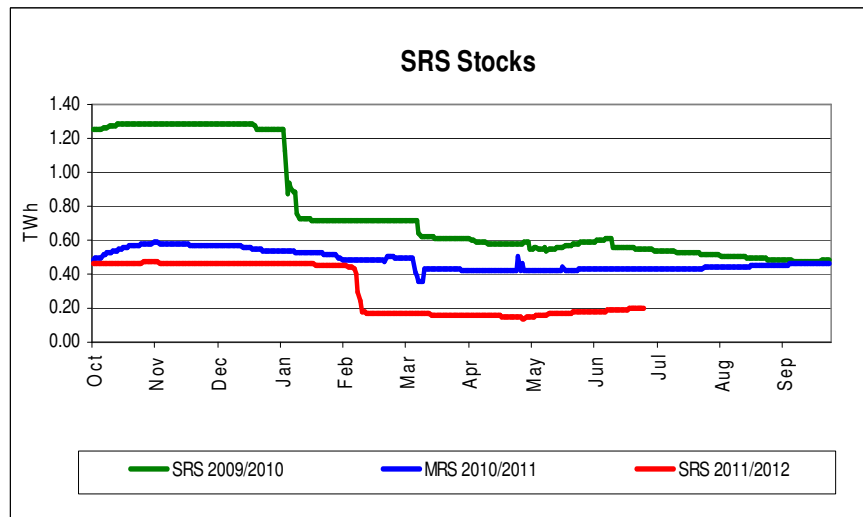
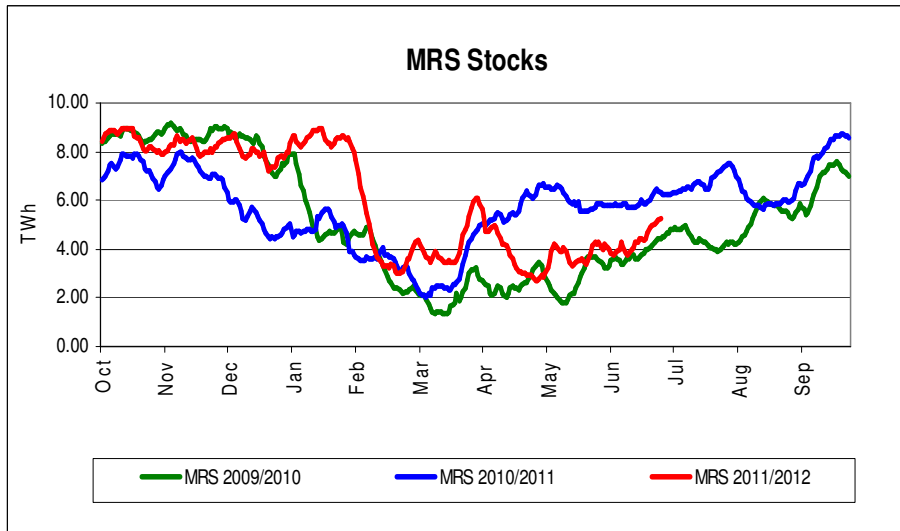
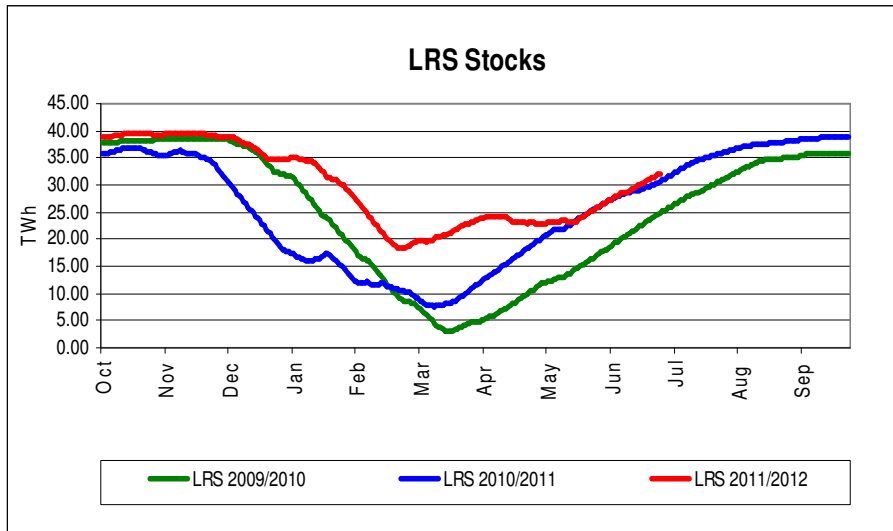
Gas Supply Breakdown

1st Apr 2012 to 27th June 2012



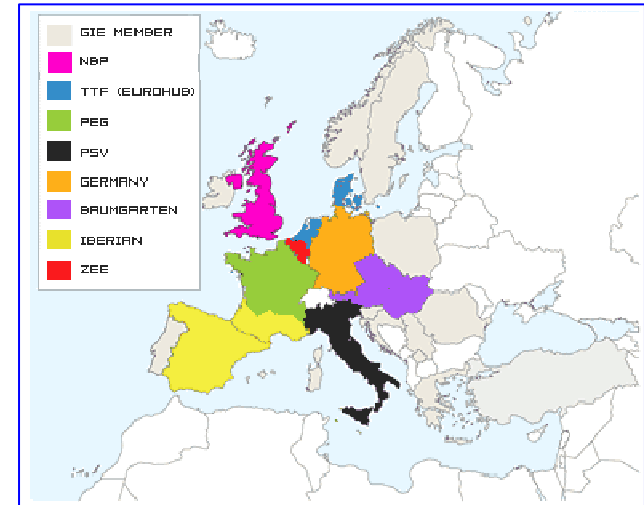
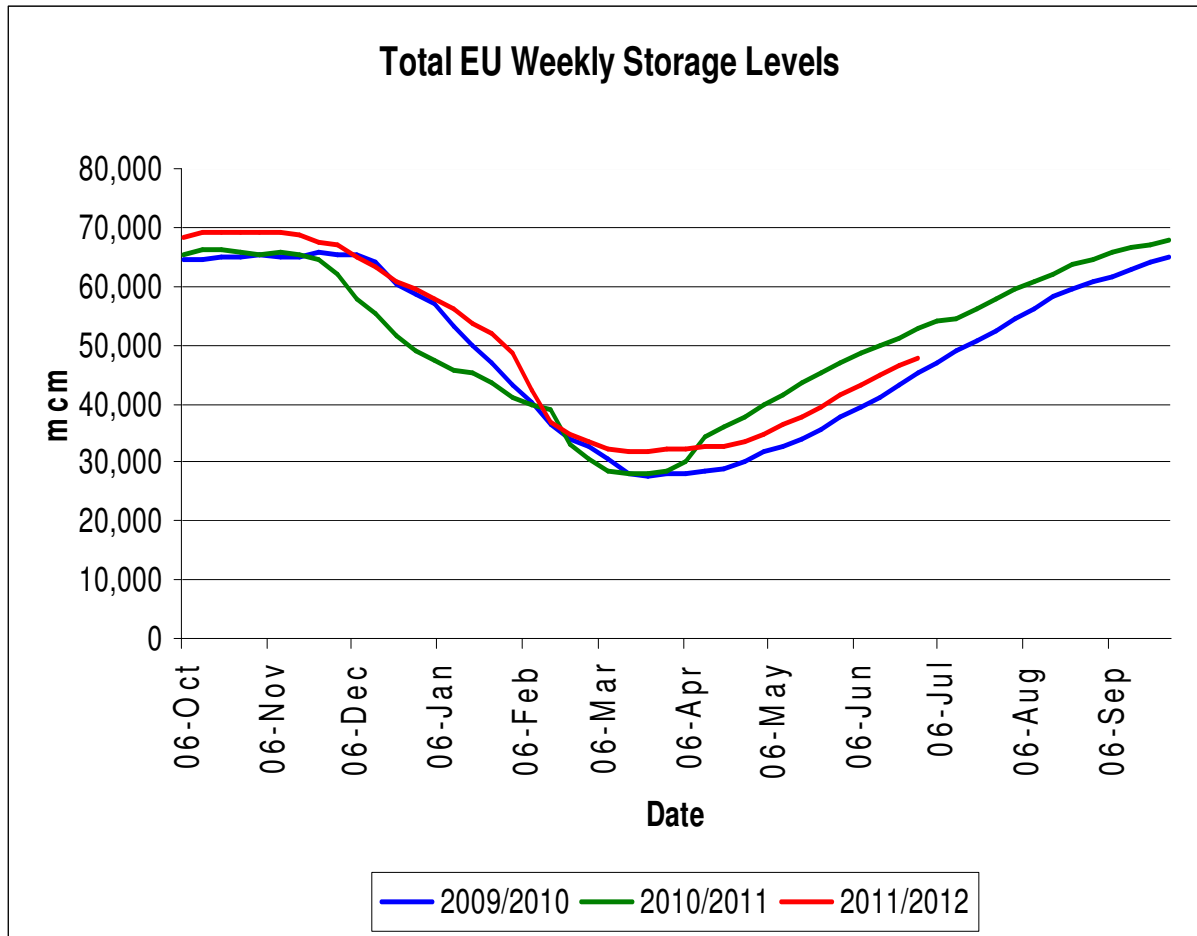
Storage Stocks - UK

From 1st October 2011 to 30th June 2012



Storage Stocks - EU

From 1st October 2011 to 28th June 2012



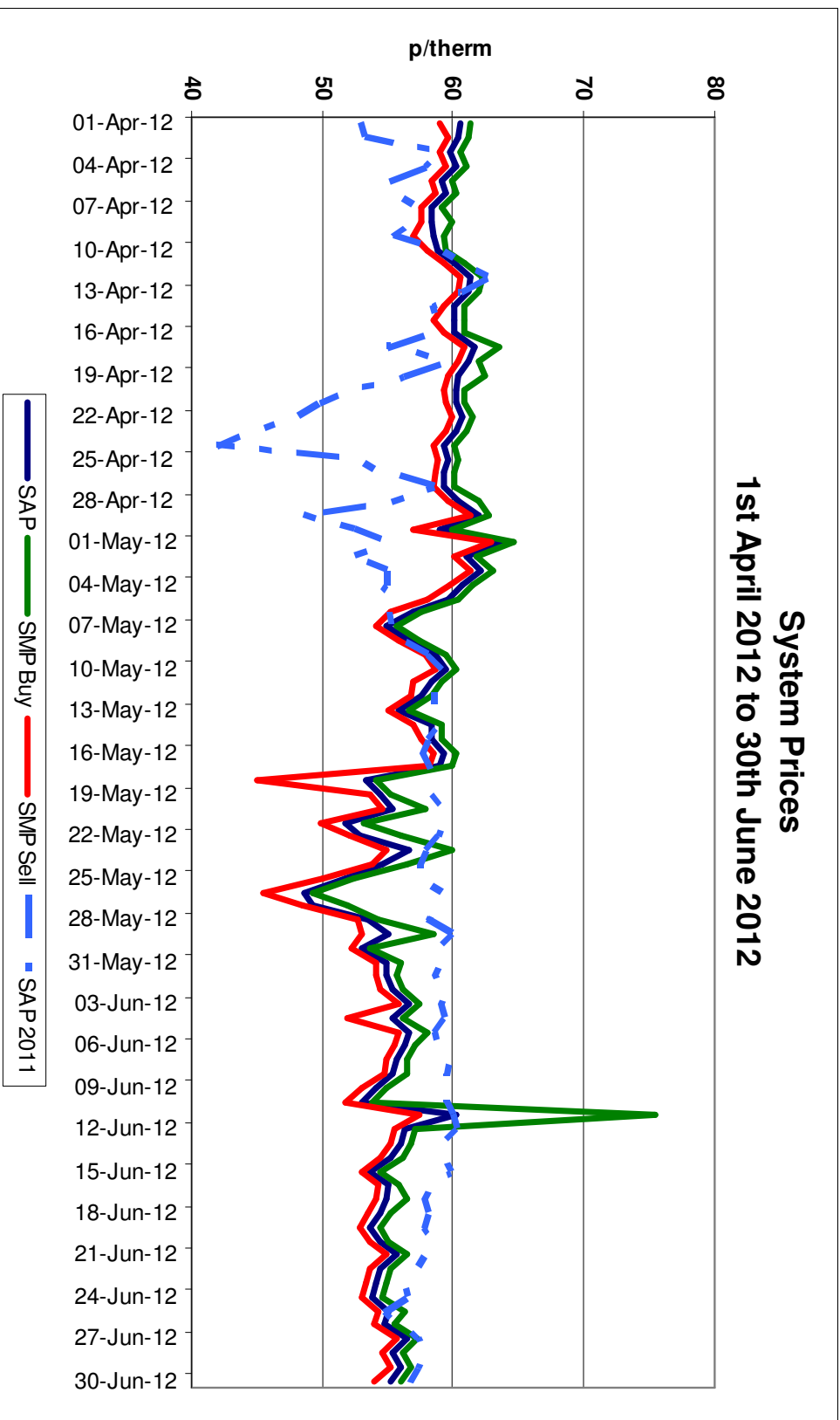
Stocklevel Status at 06:00CET on Wednesday 04.07.12		
Hub Area	Stock Level (mcm)	% Full
Baumgarten	10285.40	60.19%
Germany	13878.54	69.23%
Iberian	2134.76	84.14%
NBP	3658.00	76.91%
France	5454.00	43.78%
PSV	11865.00	75.22%
TTF (Eurohub)	1403.74	72.25%
ZEE	485.40	71.38%
Total Hubs	49164.84	69.14%

Transporter Actions and Neutrality



System Prices

1st April 2012 to 30th June 2012

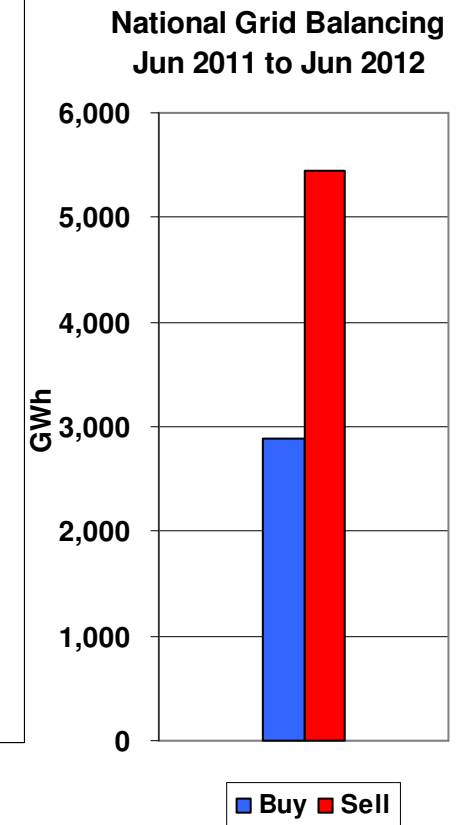
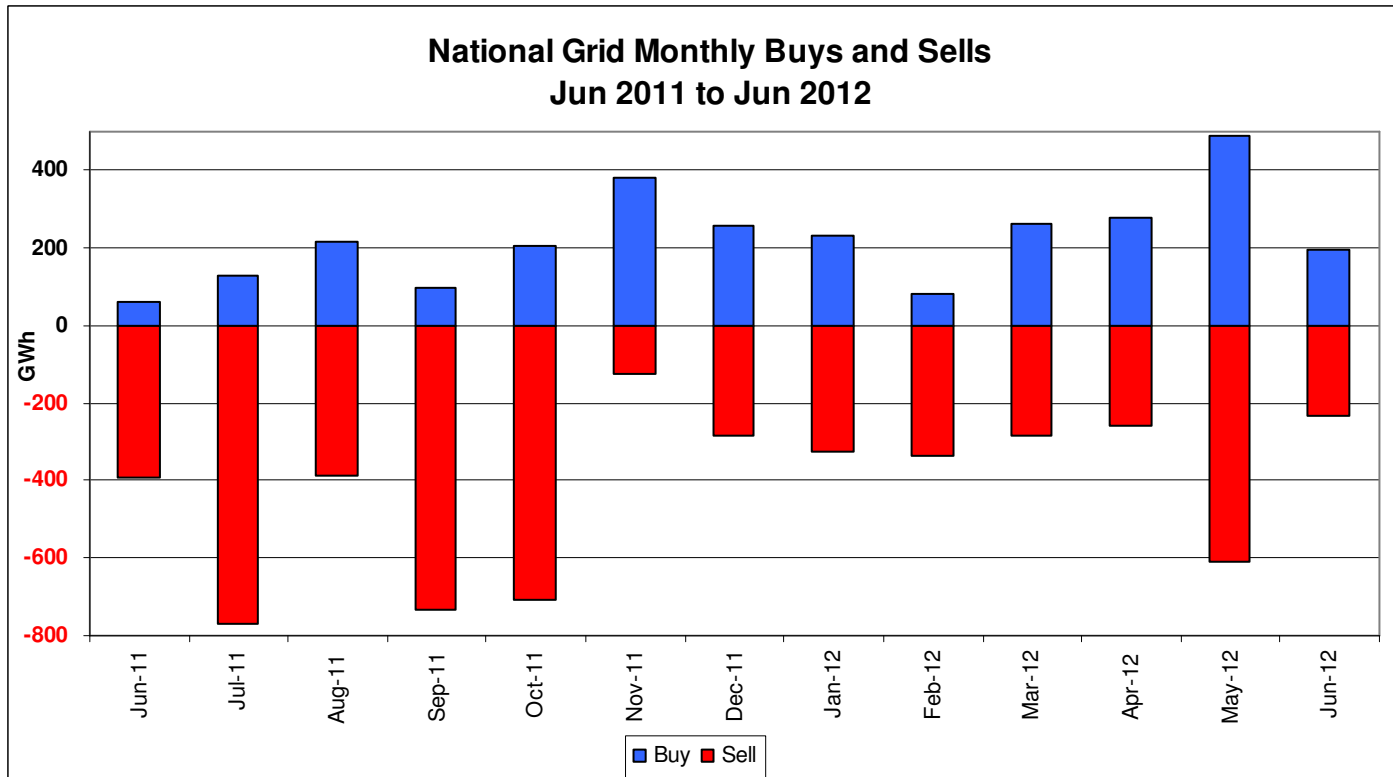


Transporter Energy Traded on the OCM

Buys and Sells by Month
From June 2011 to June 2012



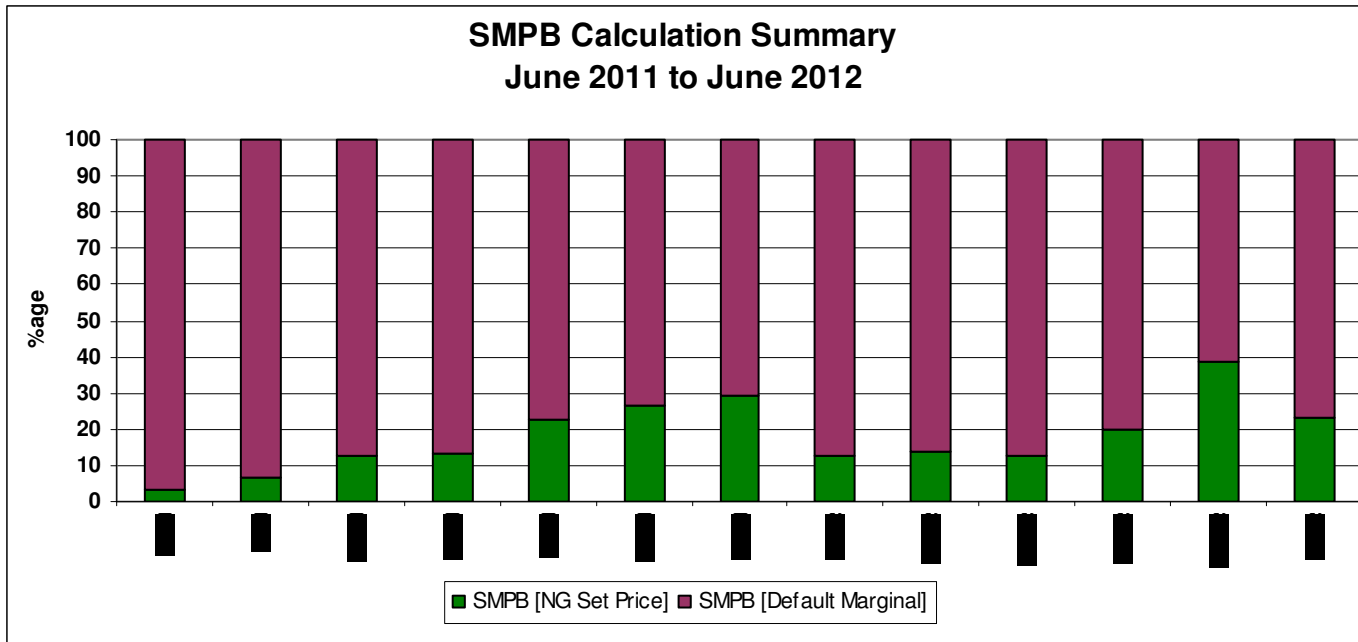
THE POWER OF ACTION



Days of Default SMP Prices

From June 2011 to June 2012

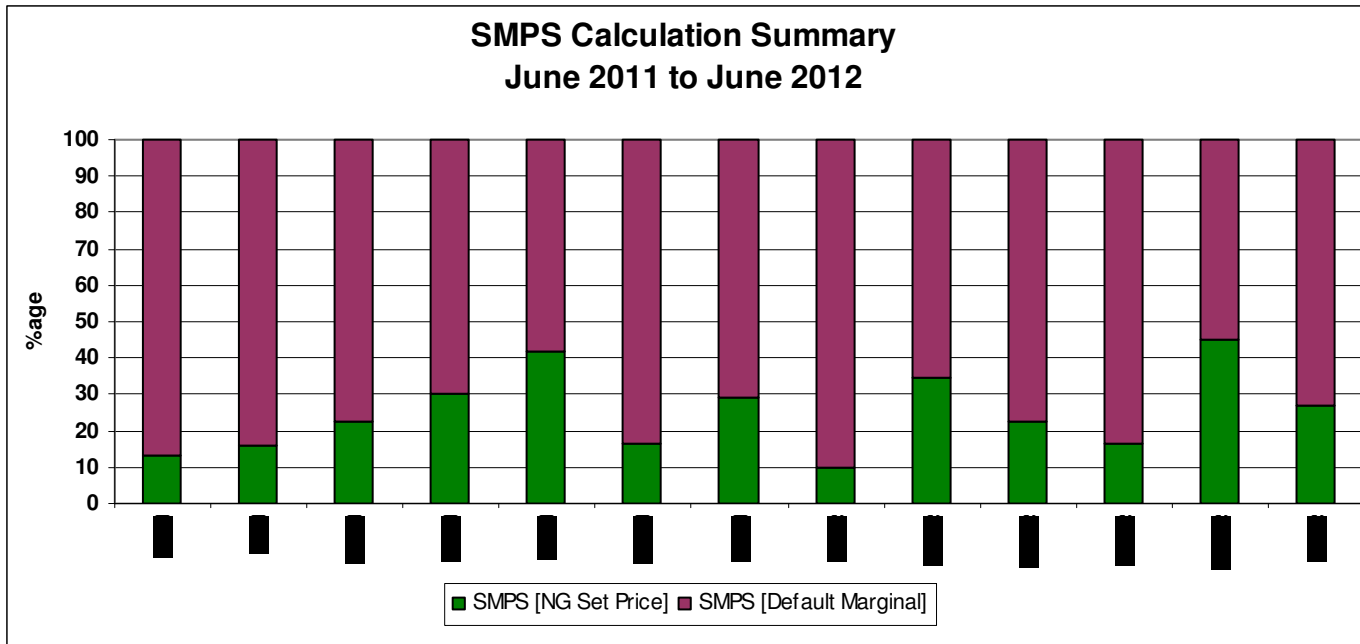
	<u>SMP Buy</u>	<u>SMP SELL</u>	<u>Both</u>
Apr-12	80.00%	83.30%	66.70%
May-12	61.30%	54.80%	25.80%
Jun-12	76.70%	73.30%	53.30%



Days of Default SMP Prices

From June 2011 to June 2012

	SMP Buy	SMP SELL	Both
Apr-12	80.00%	83.30%	66.70%
May-12	61.30%	54.80%	25.80%
Jun-12	76.70%	73.30%	53.30%



Transporter Actions on the OCM Mechanism

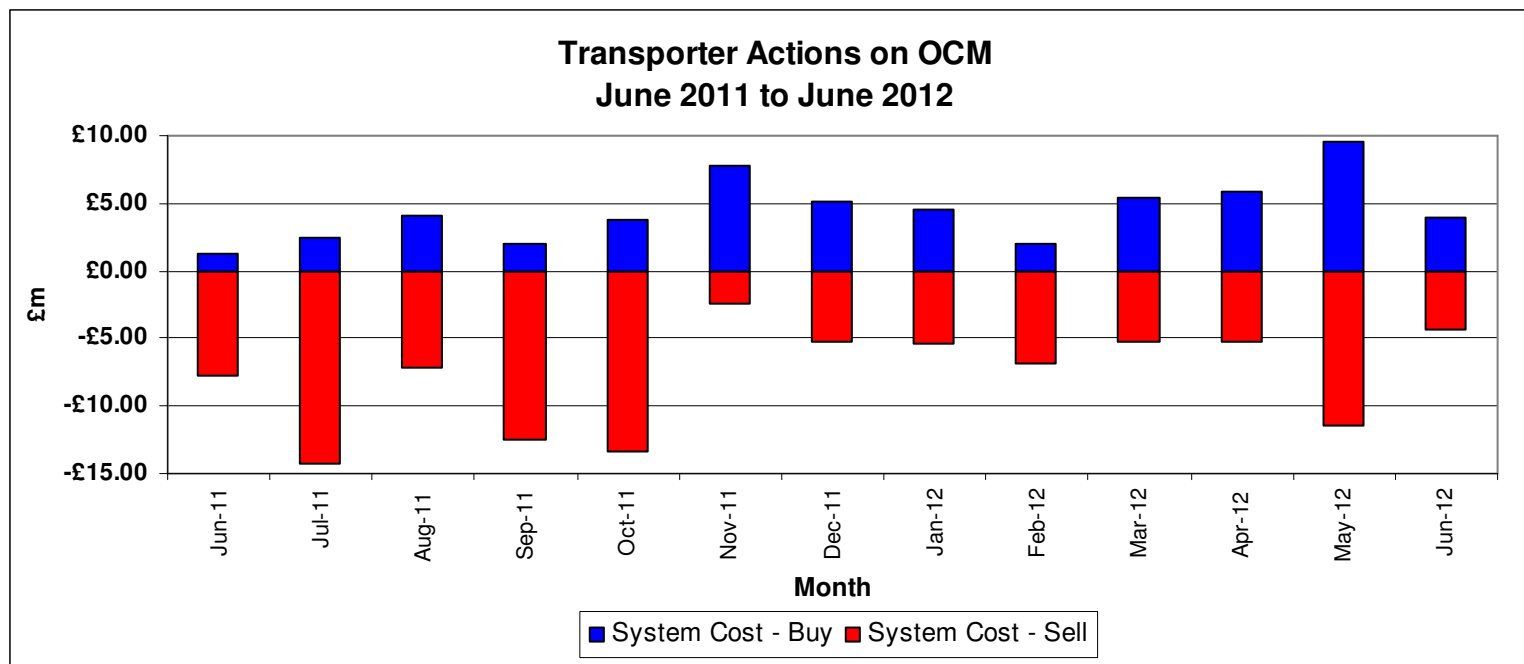


Revenues / Costs

THE POWER OF ACTION

From 1st October 2011 to 30th June 2012

	Quantity TWh	Average p/kWh	Price Therms	Cost £m
System Buy	2.39	2.0004	58.61	£47.81
System Sell	3.162	1.8813	55.12	-£59.48
Net Position	5.552			-£11.67

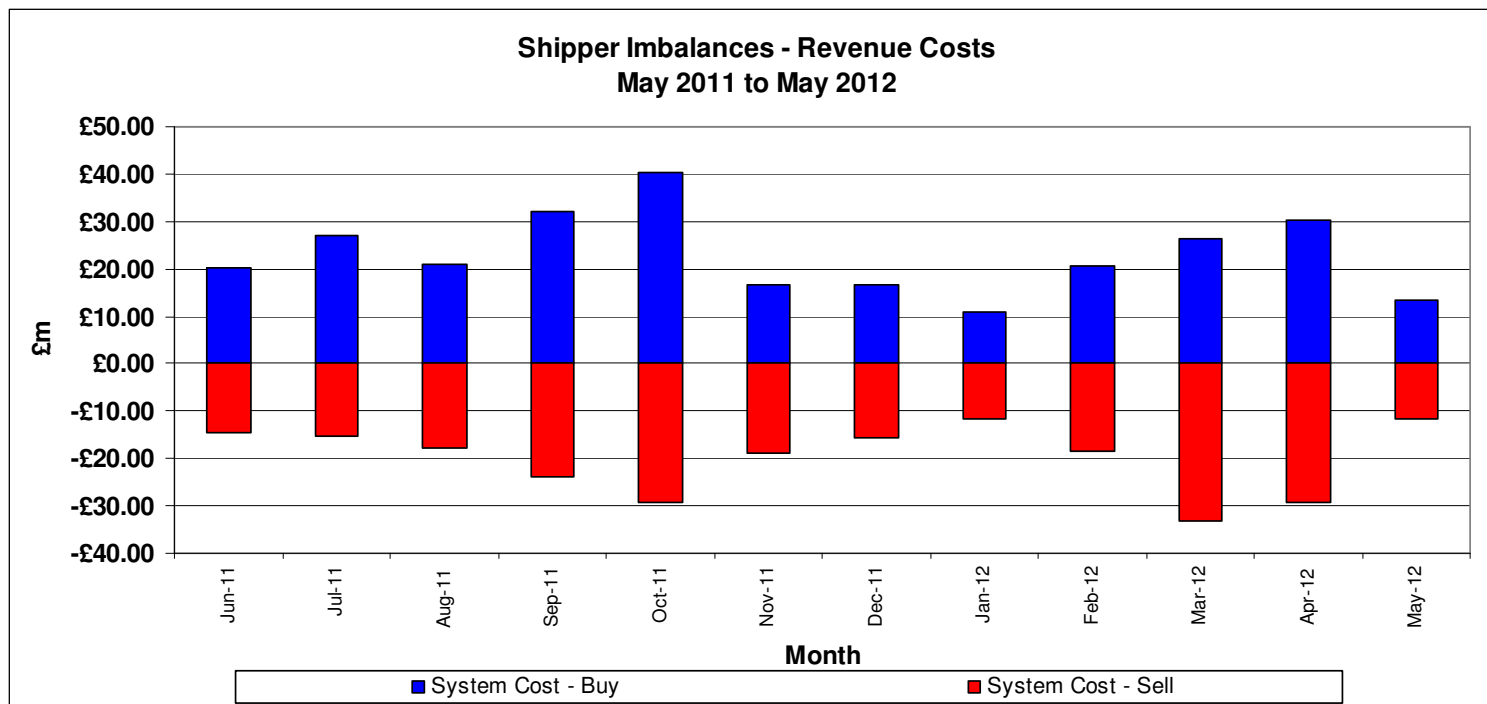


Shipper Imbalance

Revenues / Costs

From 1st October 2011 to 31st May 2012

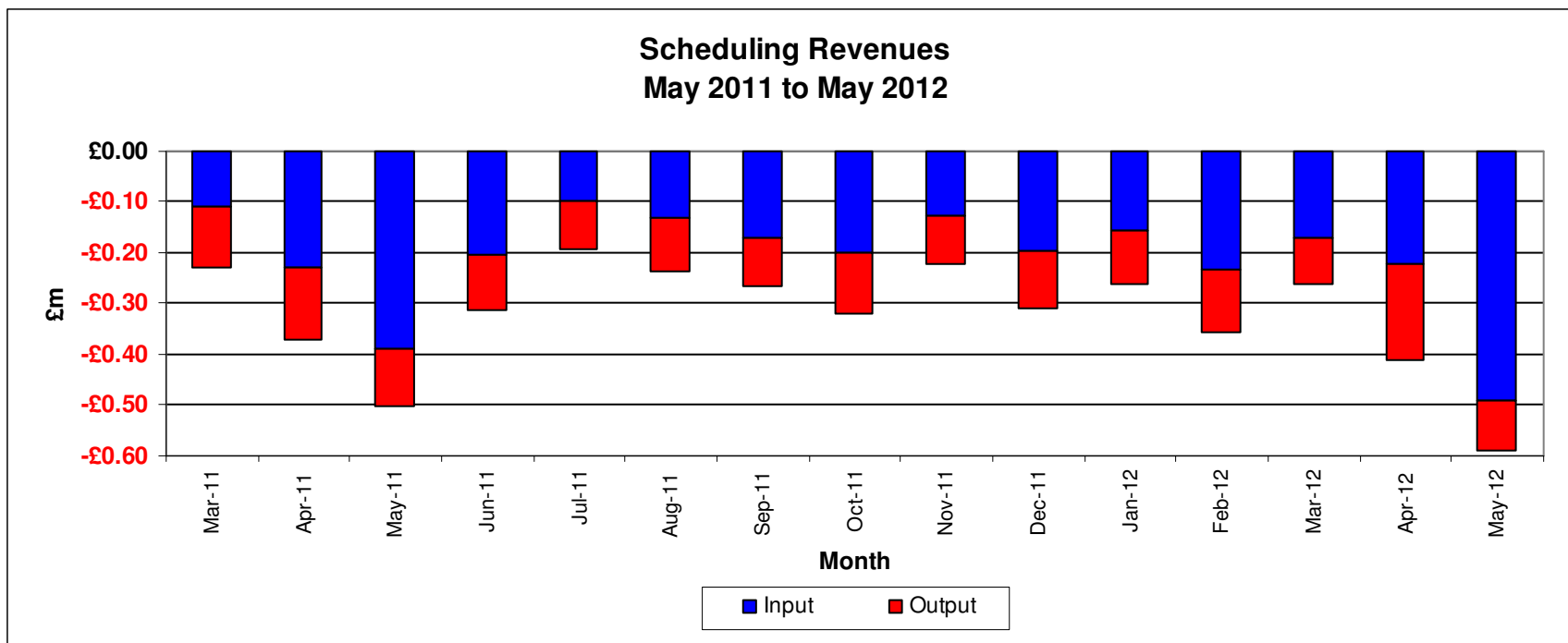
	Quantity (TWH)	Average Price P/KWh	Average price P/Therm	Cost £m
System Buy	14.75	1.90	55.75	£280.66
Shipper Over Delivery/Cost to Neutrality				
System Sell	-13.12	1.9993	58.57	-£262.21
Shipper Under Delivery/Revenue to Neutrality				
Net Position	1.63			£18.45



Scheduling Revenues

From 1st October 2011 to 31st May 2012

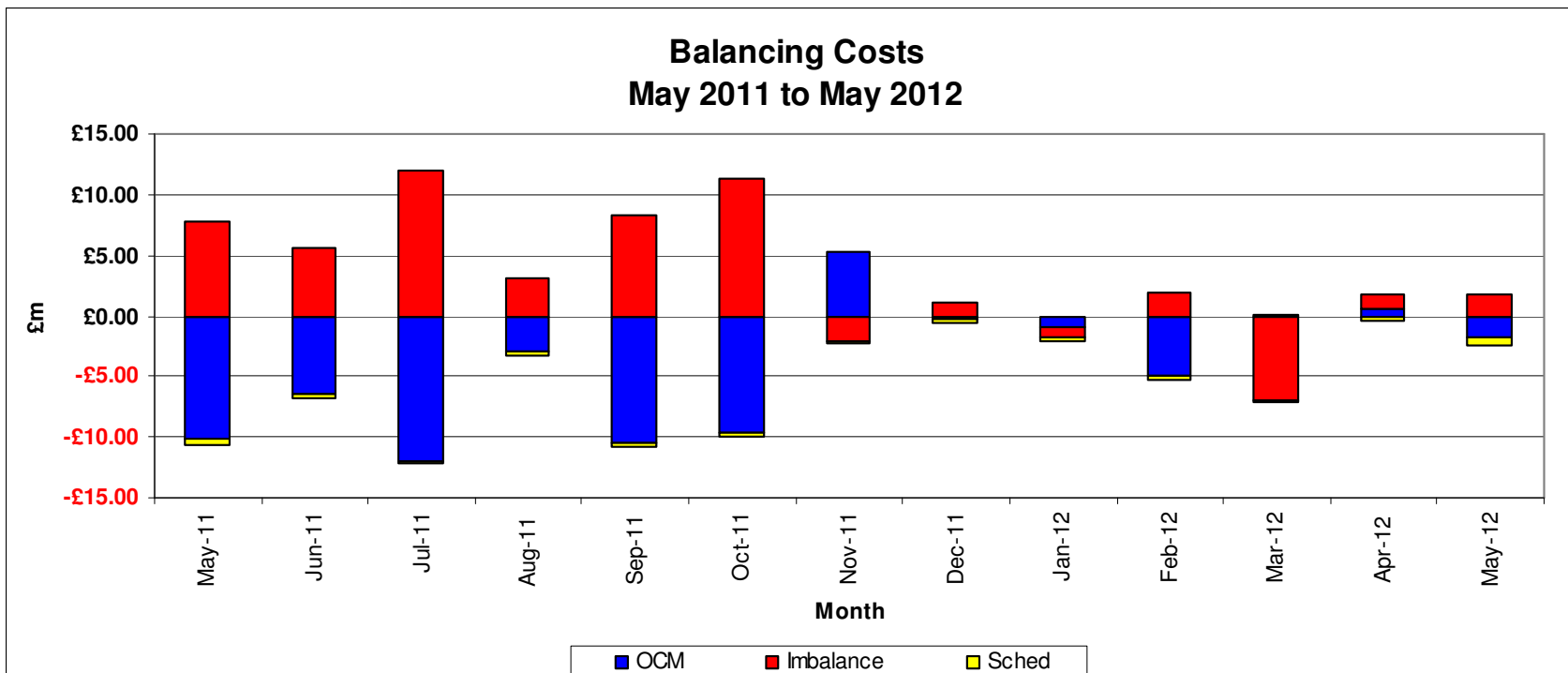
	Cost £m
Input	-£1.80
Output	-£0.94
Total	-£2.74



Balancing Costs

From 1st October 2011 to 31st May 2012

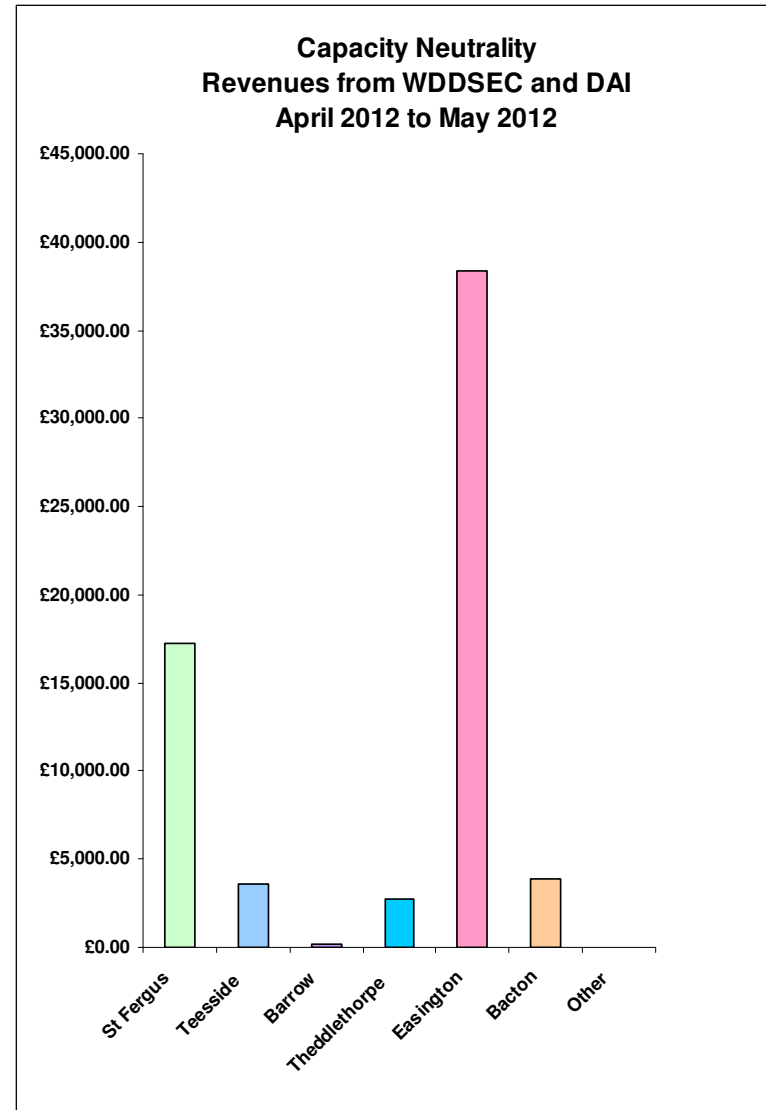
	£m
Transporter Actions on OCM	-£11.35
Imbalance Charge	18.45
Scheduling Charge	<u>-£2.74</u>
Balancing Cost	£4.36



Capacity Neutrality

Revenues from WDDSEC and DAI
From 1st April 2012 to 31st May 2012

St Fergus	£17,213.11
Teesside	£3,566.65
Barrow	£145.00
Theddlethorpe	£2,761.41
Easington	£38,375.33
Bacton	£3,862.91
Other	£0.00
Net Revenue	-£260,437.00



Capacity Neutrality

Prompt Buy Backs

From 1st April 2012 to 31st May 2012

ASEP	Cost	No. of Days	Energy (kWh)
St.Fergus	£0.00	0	0
Teesside	£0.00	0	0
Barrow	£0.00	0	0
Theddlethorpe	£0.00	0	0
Easington	£0.00	0	0
Bacton	£0.00	0	0
TOTAL	£0.00	0	0

Capacity Neutrality

Capacity Management Agreement (Including RMTTSEC)

From 1st April 2012 to 31st May 2012

Month	Cost
Apr-12	£0.00
May-12	£0.00
Jun-12	
Jul-12	
Aug-12	
Sep-12	
Oct-12	
Nov-12	
Dec-12	
Jan-13	
Feb-13	
Mar-13	
TOTAL *	£0.00

* Includes Total Capacity Constraint Management Costs implemented through MOD 0349 [Introduction of a Force Majeure Capacity Management Arrangement].

Capacity Neutrality

Revenues from Locational Sells and PRI Charges

From 1st April 2012 to 31st May 2012

Month	Revenue
Apr-12	£0.00
May-12	£0.00
Jun-12	
Jul-12	
Aug-12	
Sep-12	
Oct-12	
Nov-12	
Dec-12	
Jan-13	
Feb-13	
Mar-13	
TOTAL	£0.00

Capacity Neutrality

Revenues from Entry Cap Overruns and Non-Obligated Sales
From 1st April 2012 to 31st May 2012

Month	Entry Capacity	Non-Obligated Sales
Apr-12	£98,225.00	£12.00
May-12	£68,751.04	£0.00
Jun-12		
Jul-12		
Aug-12		
Sep-12		
Oct-12		
Nov-12		
Dec-12		
Jan-13		
Feb-13		
Mar-13		
TOTAL	£166,976.04	£12.00

Capacity Neutrality Net Cost / Revenue

From 1st April 2012 to 31st May 2012

Month	Revenue
WDDSEC/DAI Revenue	-£260,437.00
Buy Back Costs	£0.00
Capacity management Agreement	£0.00
Entry Capacity Overrun Revenue	£166,976.04
Non-Obligated Sales Revenue	£12.00
Revenue from Locational Sells and PRI Charges	£0.00
Net Revenue	-£93,448.96