

Operational Forum Meeting



Wednesday 12th December 2012, 10:30AM
Radisson Grafton Hotel, 130 Tottenham Court Road, London.

System Management Principles Statement



System Management Principles Statement

- Compliance report for October and November 2012
- Summary of balancing actions and breaches for October and November 2012
- Performance compared to last year

Summary Report

	Oct 2012	Nov 2012
Total Number of Buy Actions	18	18
Total Number of Sell Actions	30	8
Total	48	26

	Oct 2012	Nov 2012
Number of Material Breaches	0	0
Number of Non-Material Breaches	0	0

2011 / 2012 Comparison

	Oct 2011	Oct 2012	Nov 2011	Nov 2012
Number of Balancing Actions (Calendar year to date)	340	334	369	360
Number of Material Breaches (Calendar year to date)	0	0	0	0
Number of Non-Material Breaches (Calendar year to date)	0	0	0	0

Operational Overview



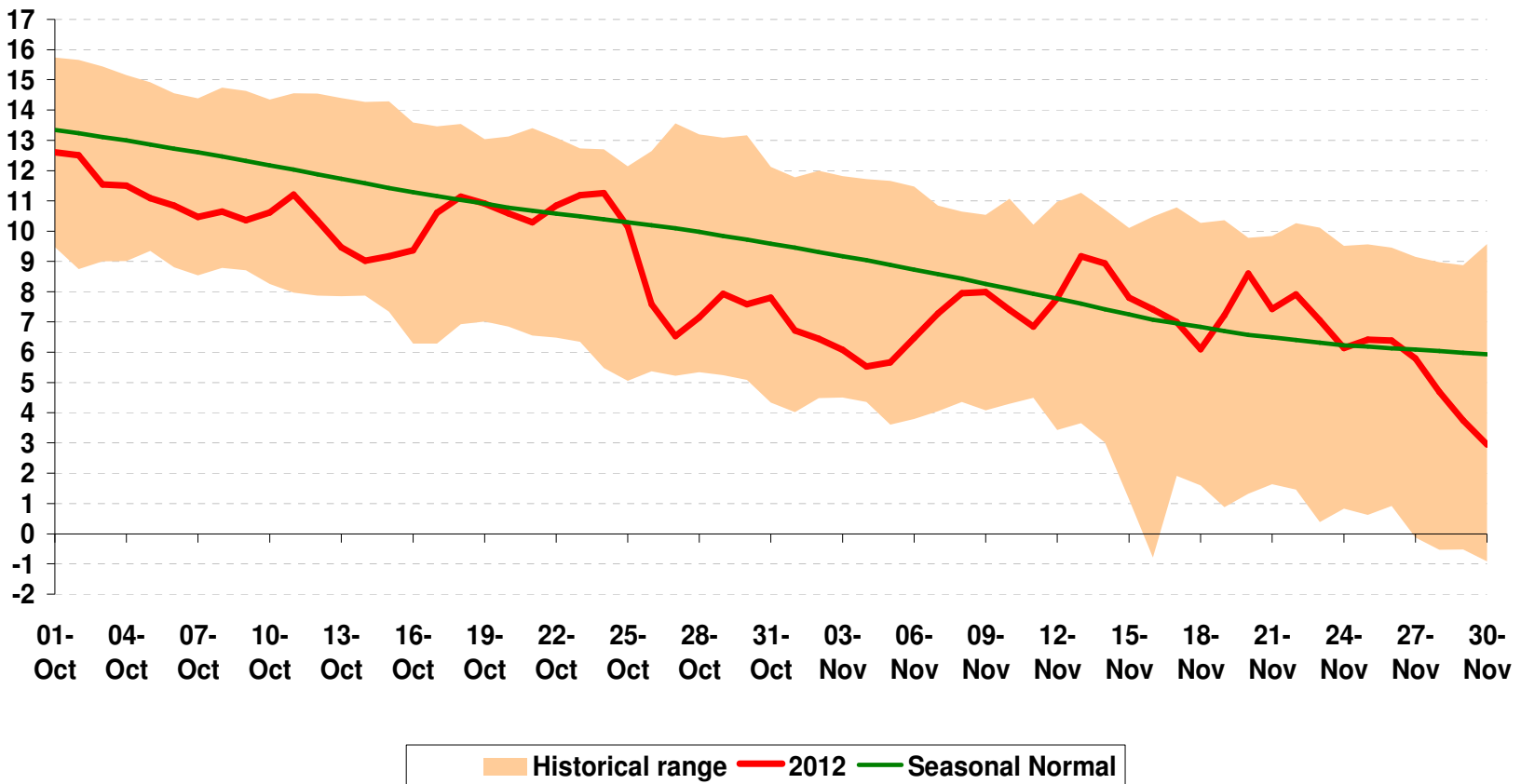
Weather



National Composite Weather

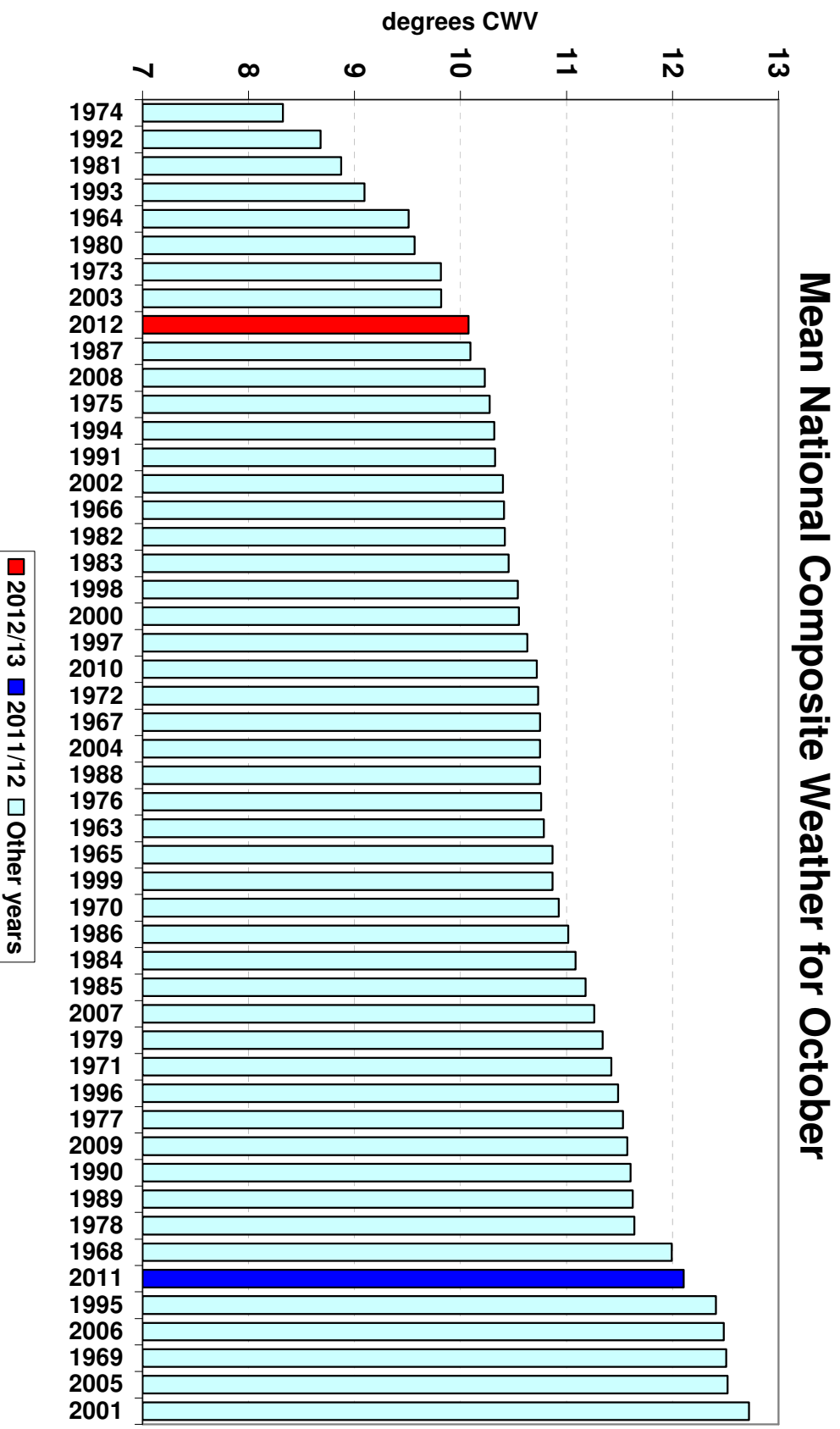
October to November 2012 Vs Historical Range

National Composite Weather October to November
2012 compared to 1929 to 2011



Mean Composite Weather Variables

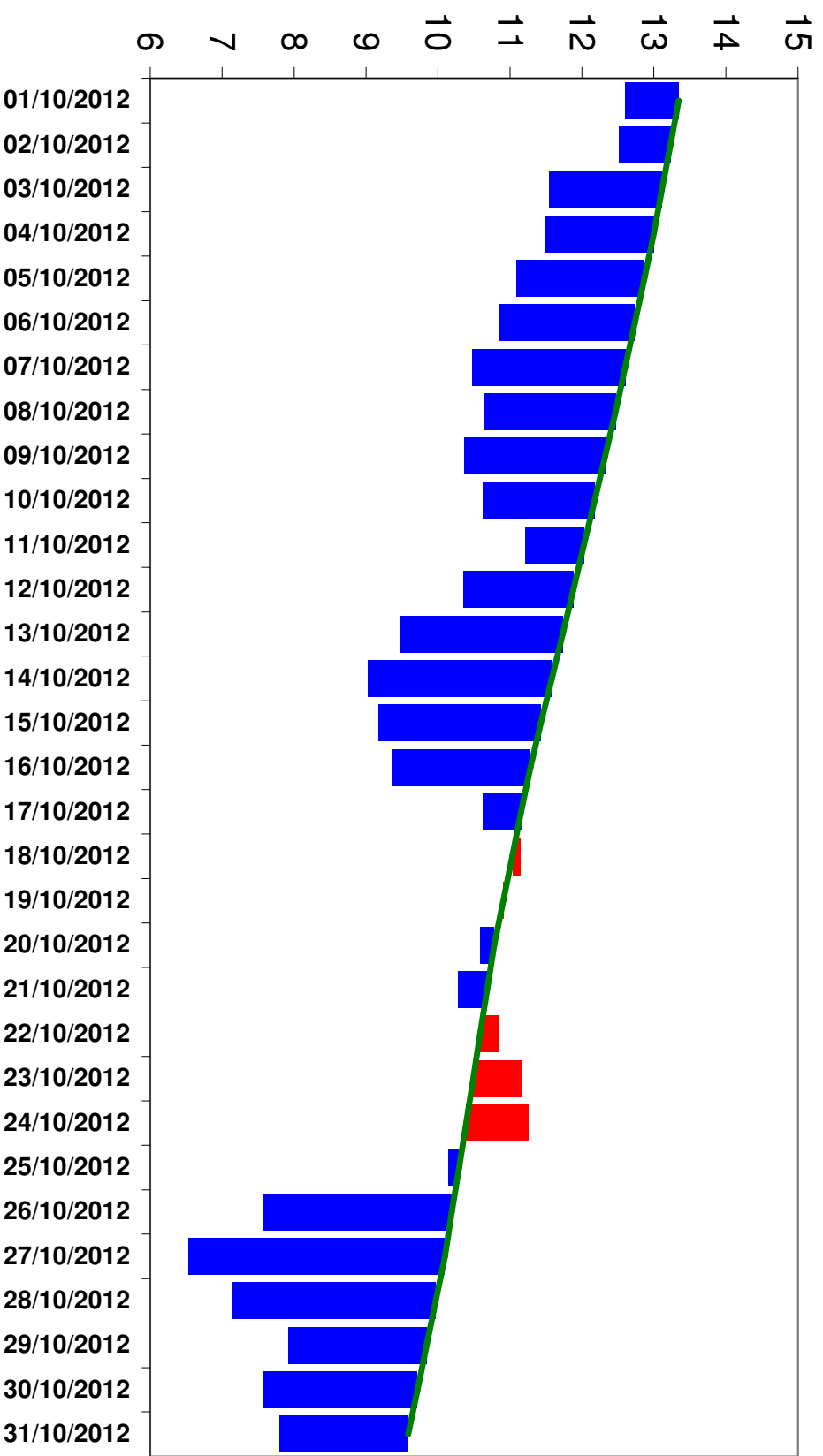
October 2012 Vs Previous Yrs.



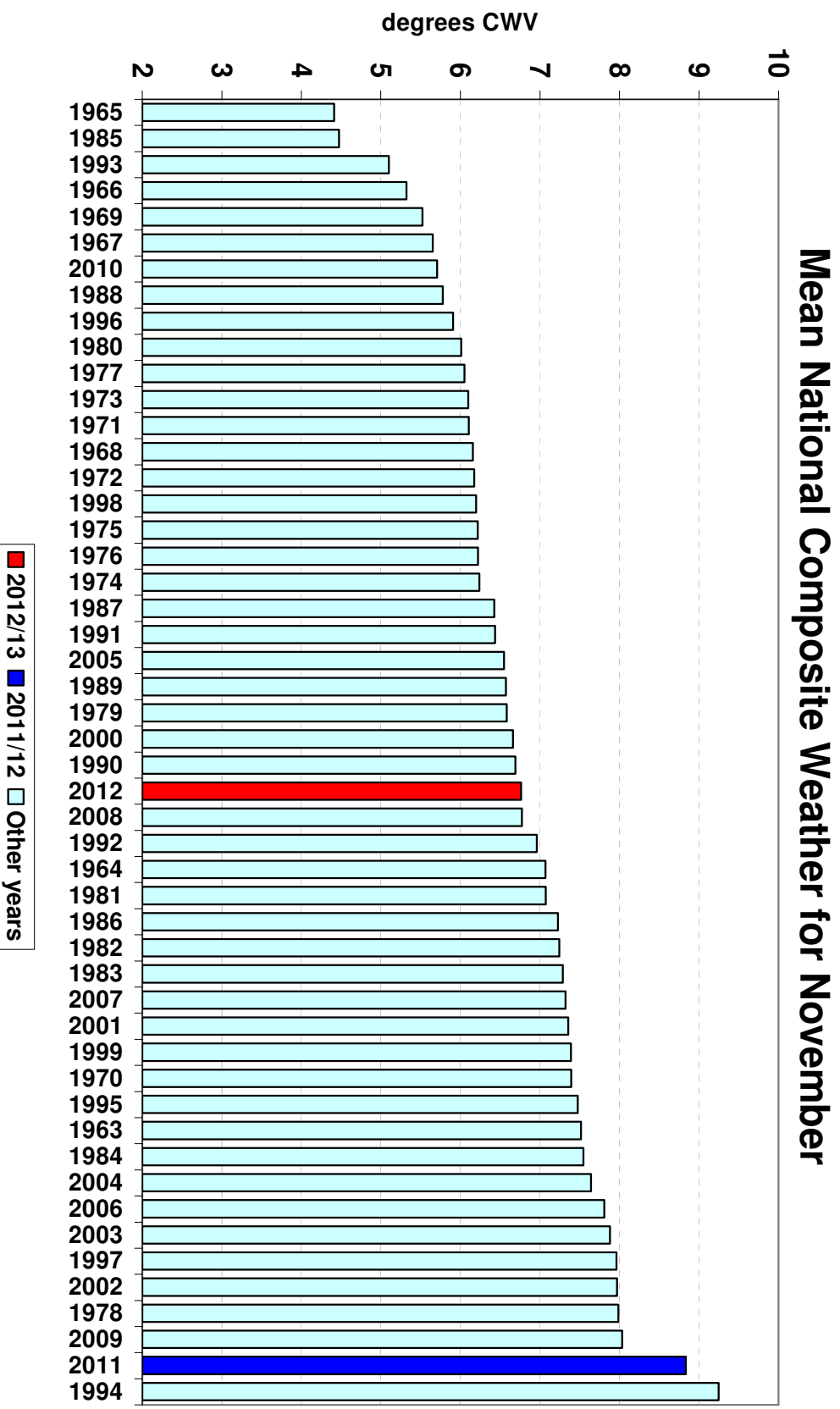
Composite Weather Variables

October 2012

National CWV and EP2 SNCW



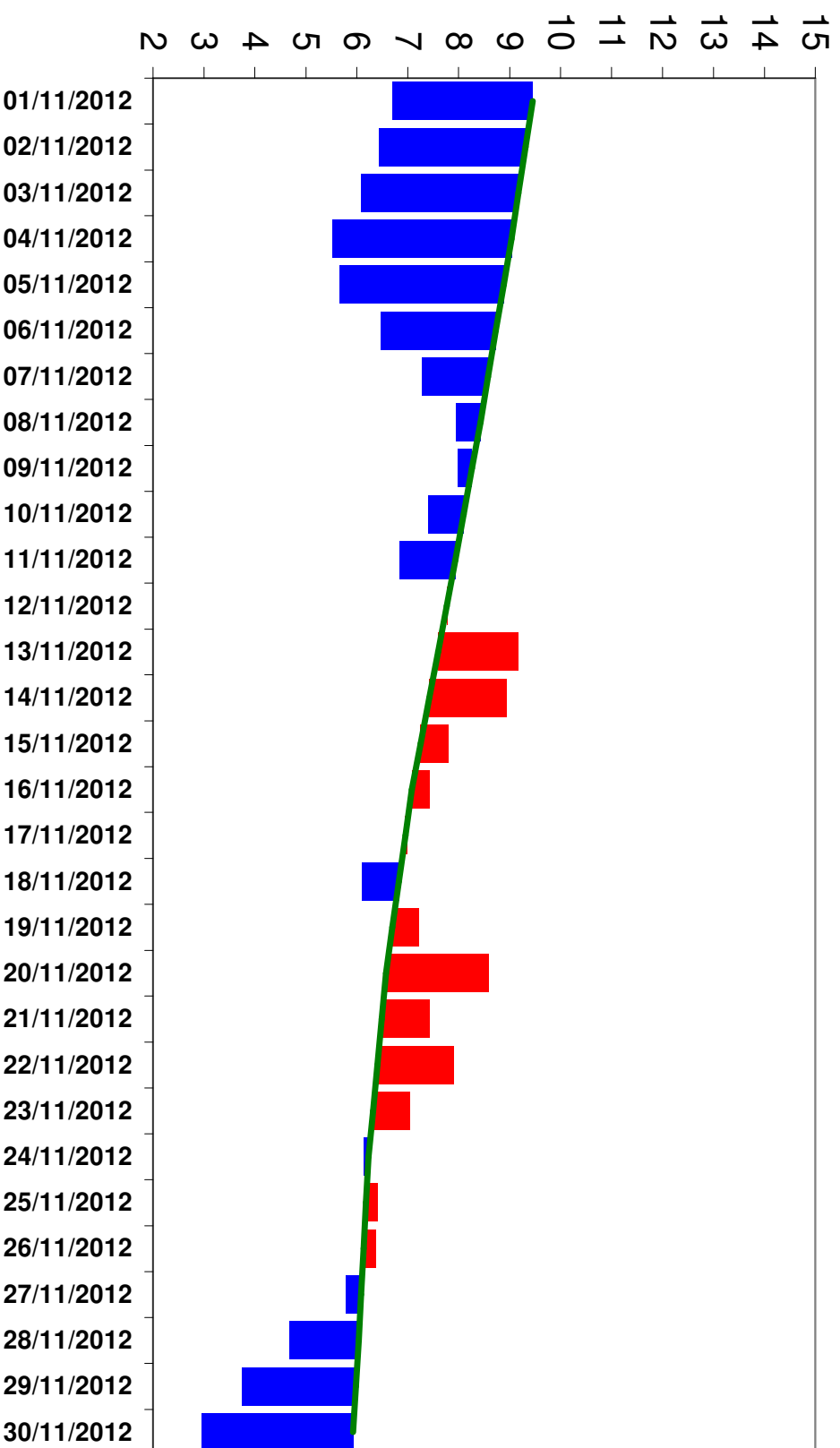
Mean Composite Weather Variables November 2012 Vs Previous Yrs.



Composite Weather Variables

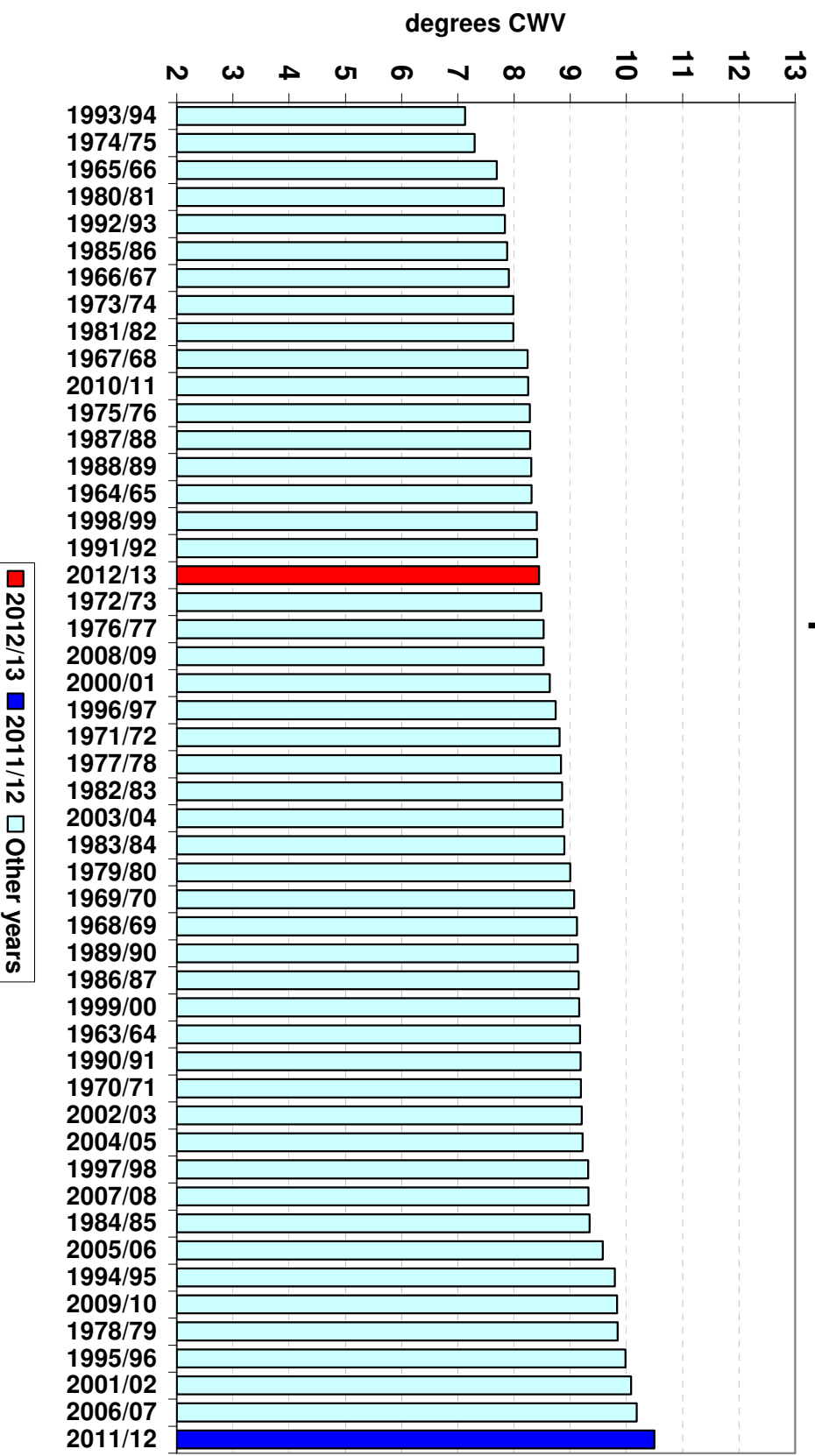
November 2012

National CWV and EP2 SNCW



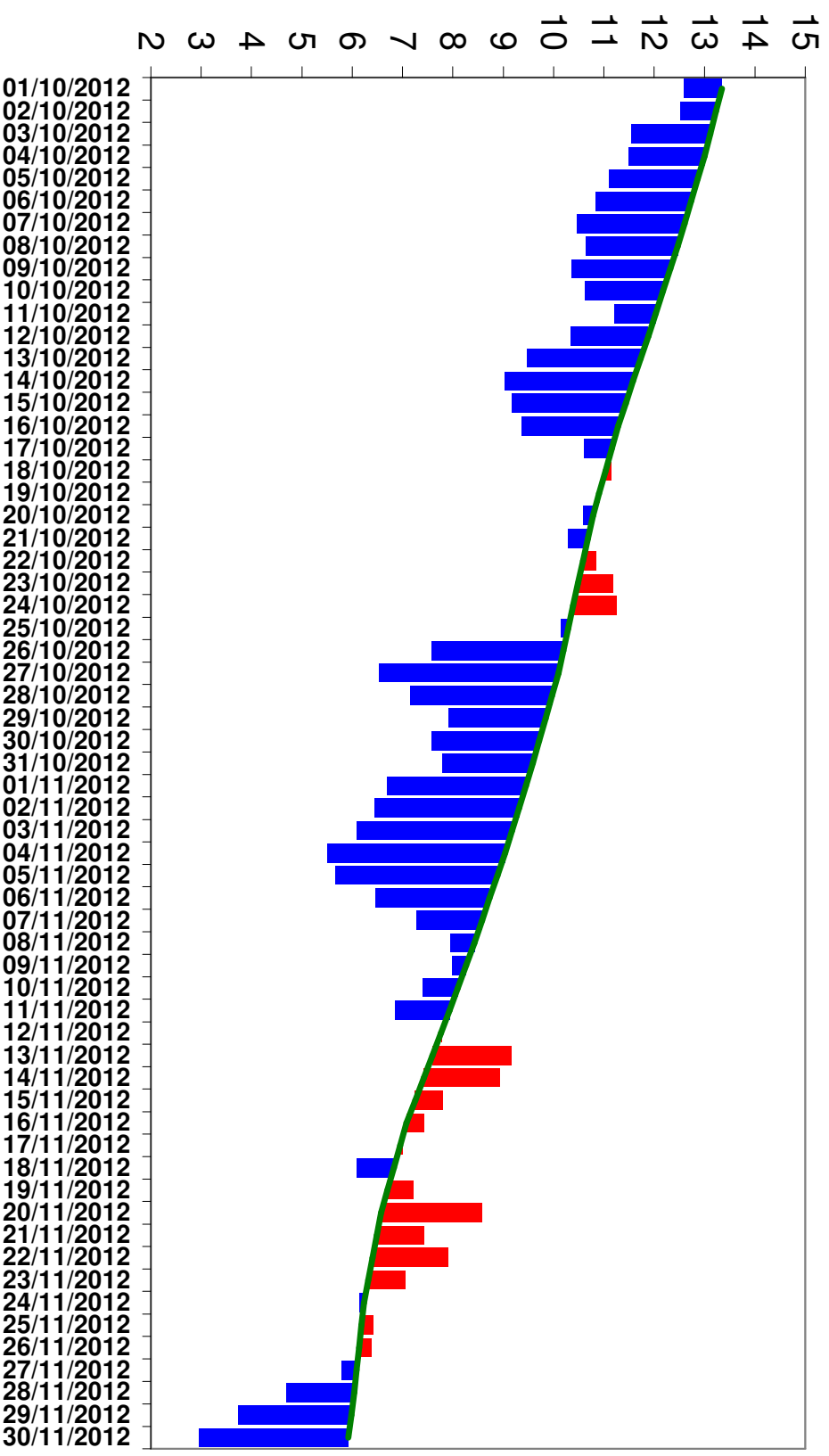
Mean Composite Weather Variables October-November 2012 Vs Previous Yrs.

Mean National Composite Weather for Oct. to Nov.



Composite Weather Variables October-November 2012

National CWV and EP2 SNCW

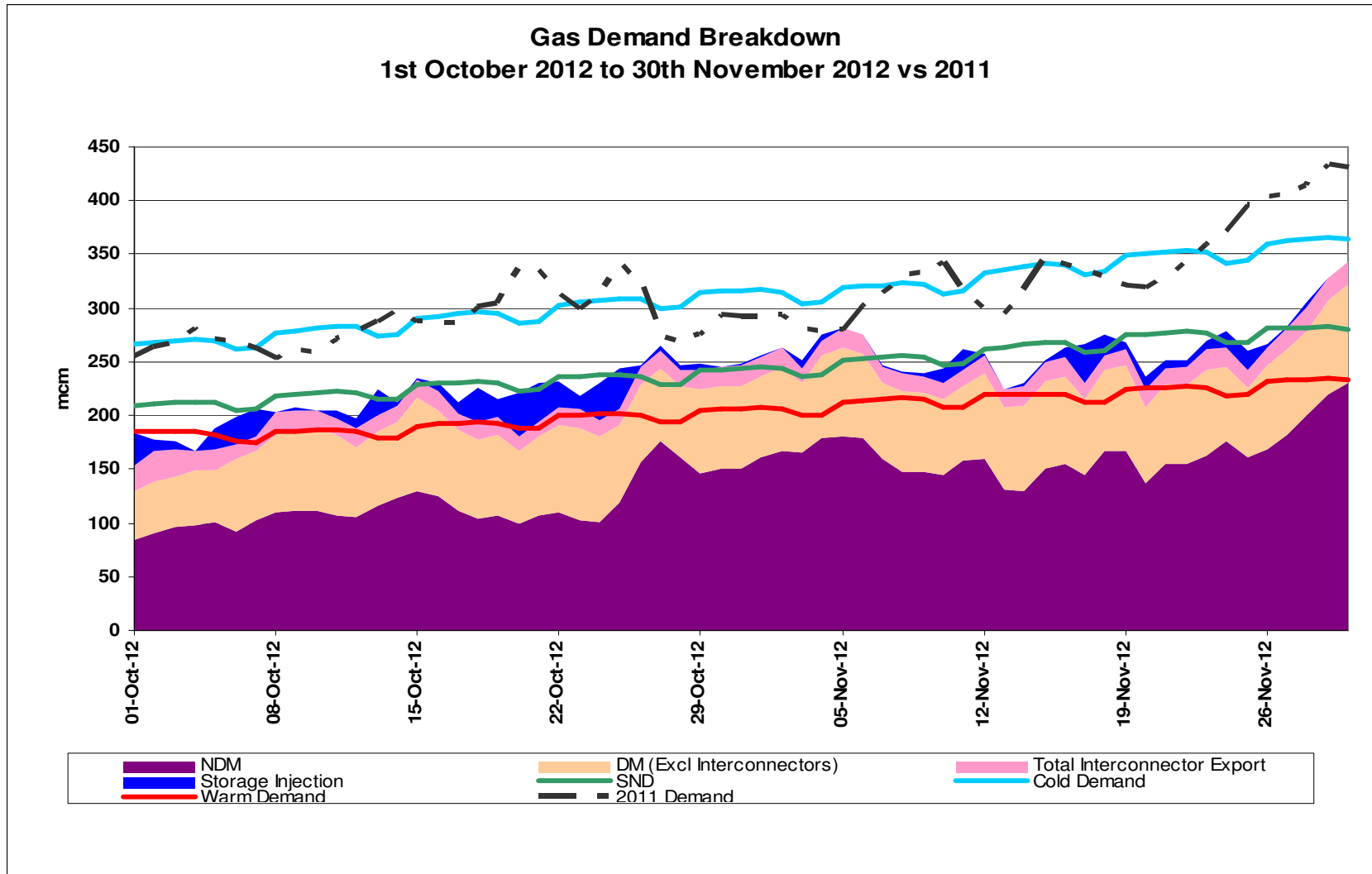


Demands



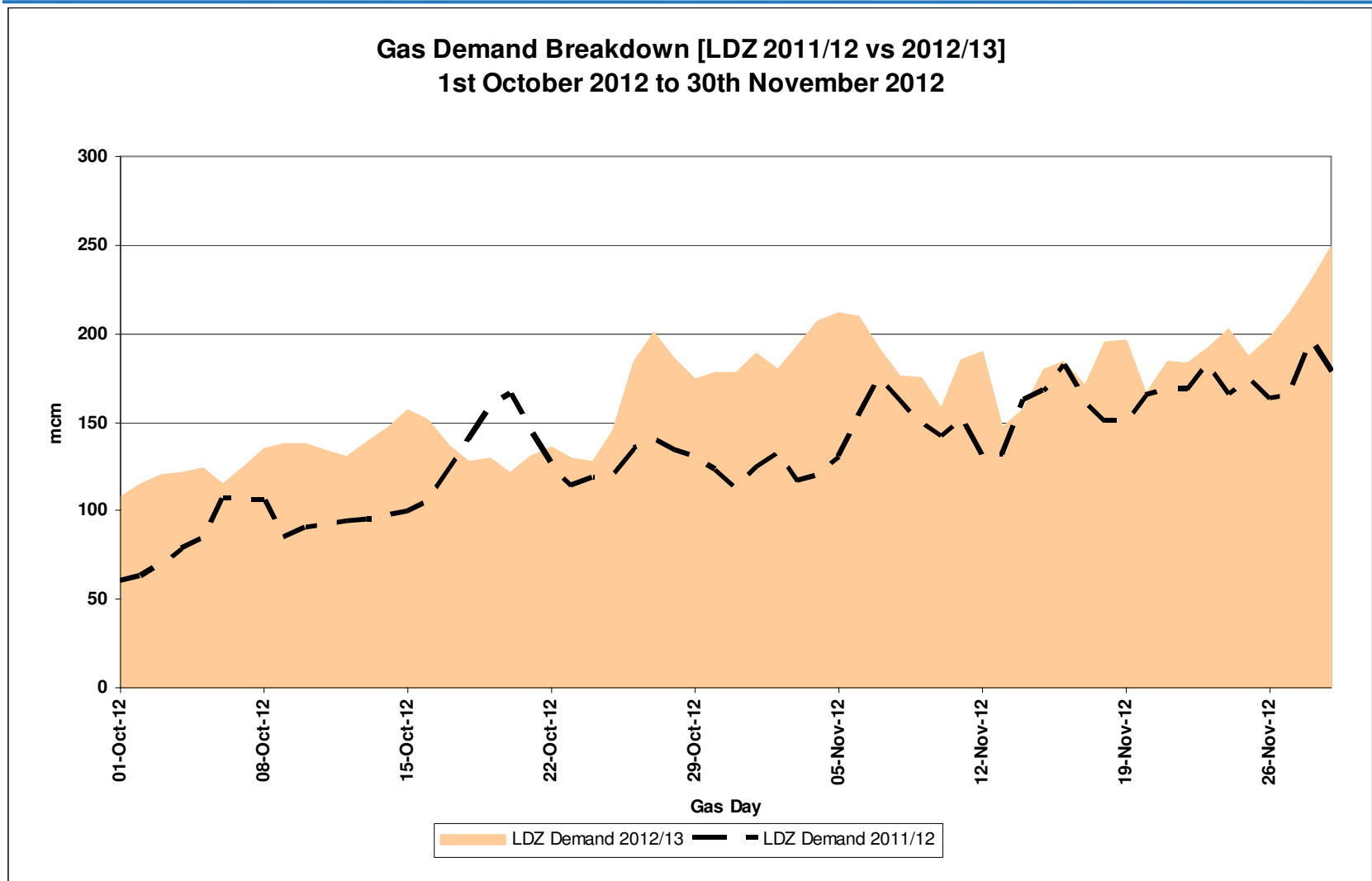
Gas Demand Breakdown

October-November 2012 Vs 2011



LDZ Demand

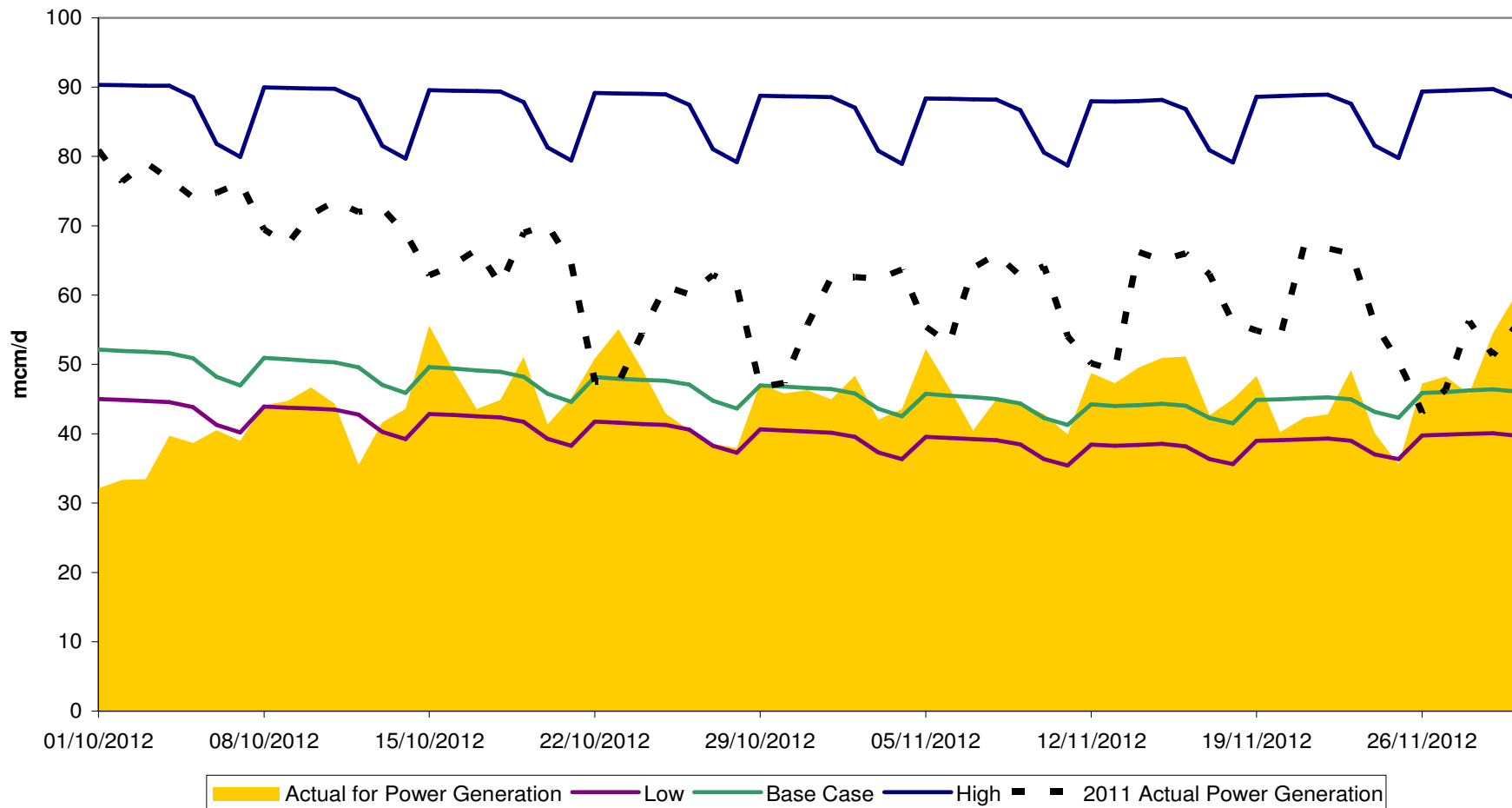
2011/12 Vs 2012/13



Power Generation

1st October 2012 to 30th November 2012

Gas Consumption for Power Generation

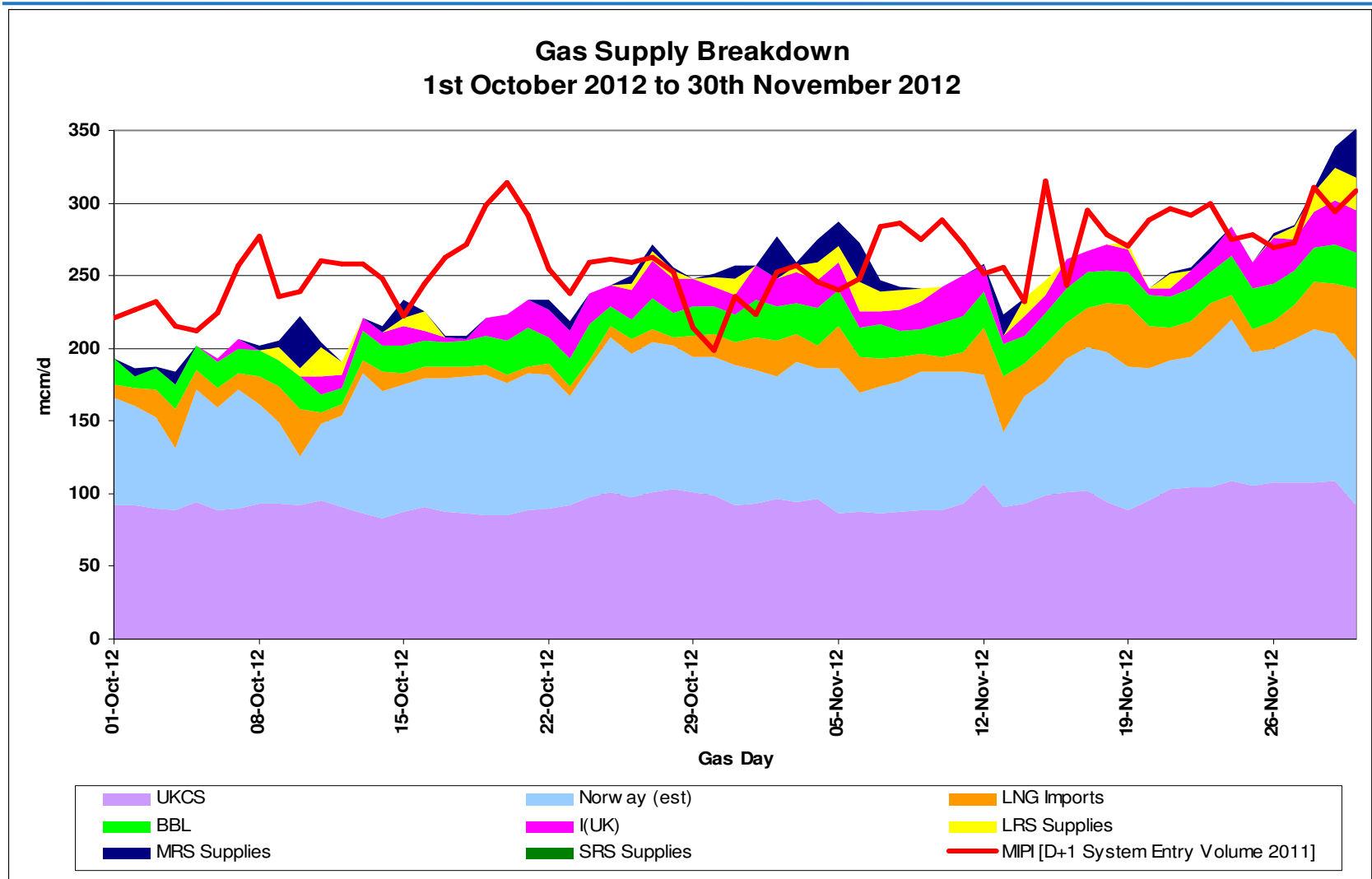


Supplies



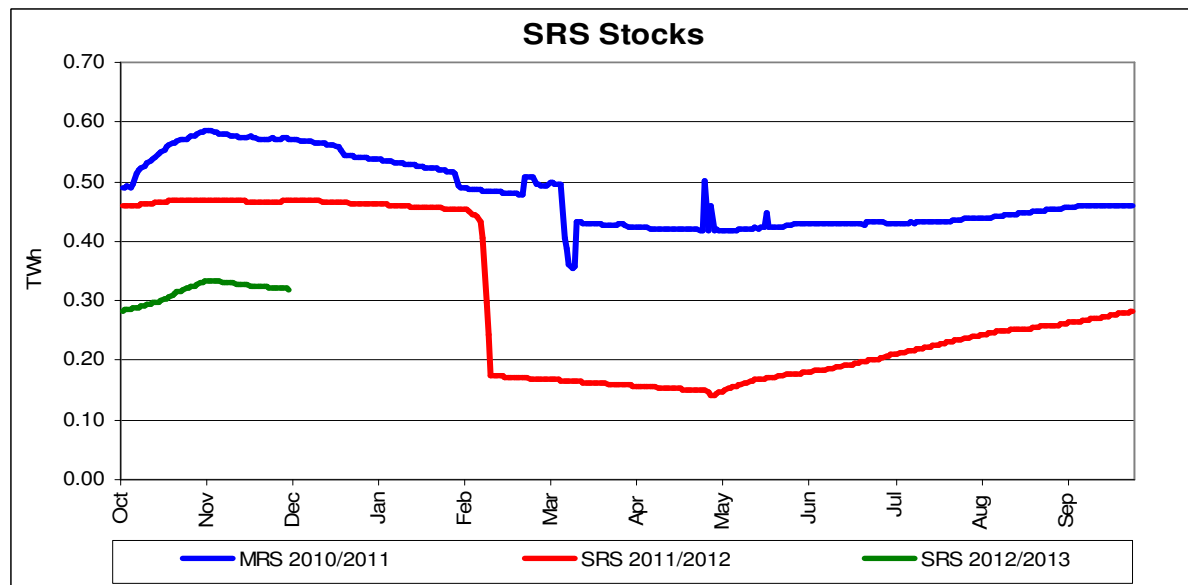
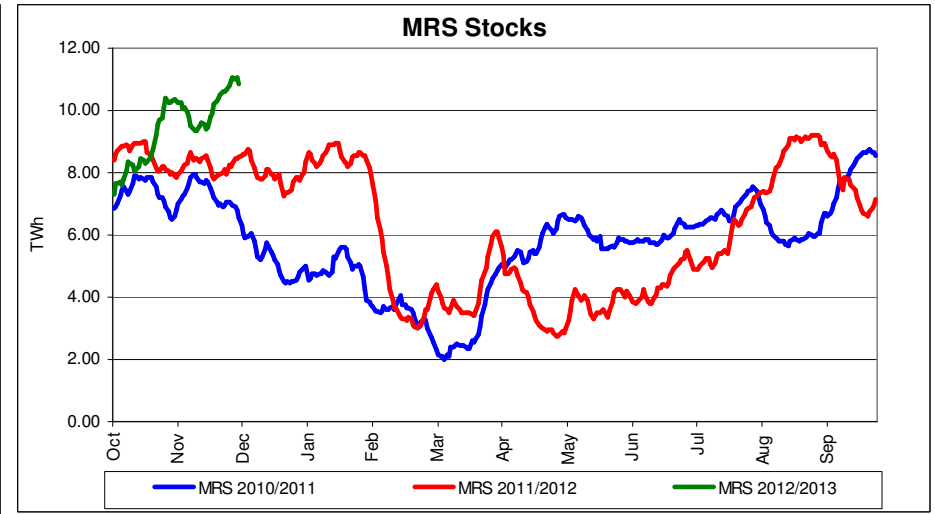
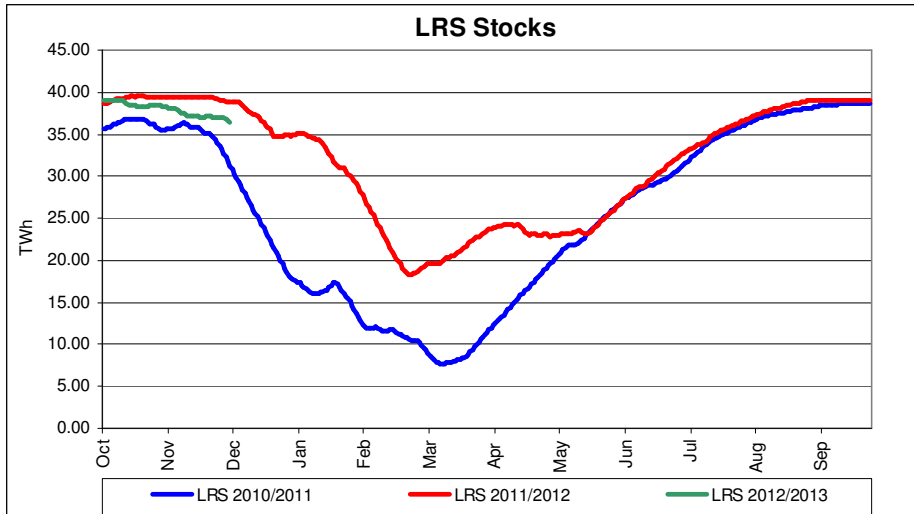
Gas Supply Breakdown

1st June 2012 to 30th September 2012



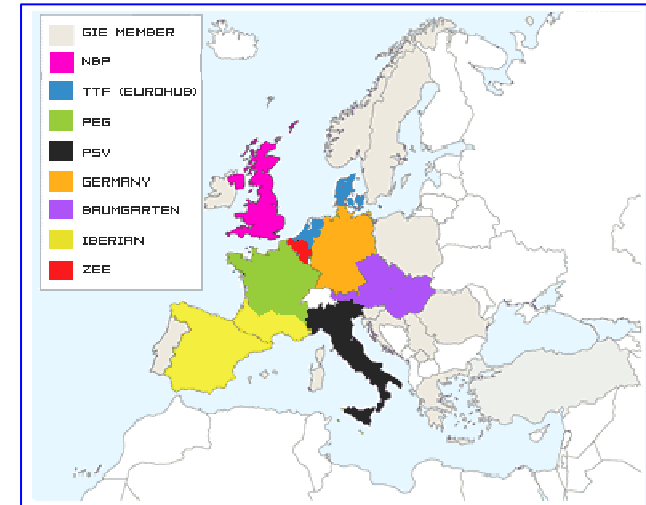
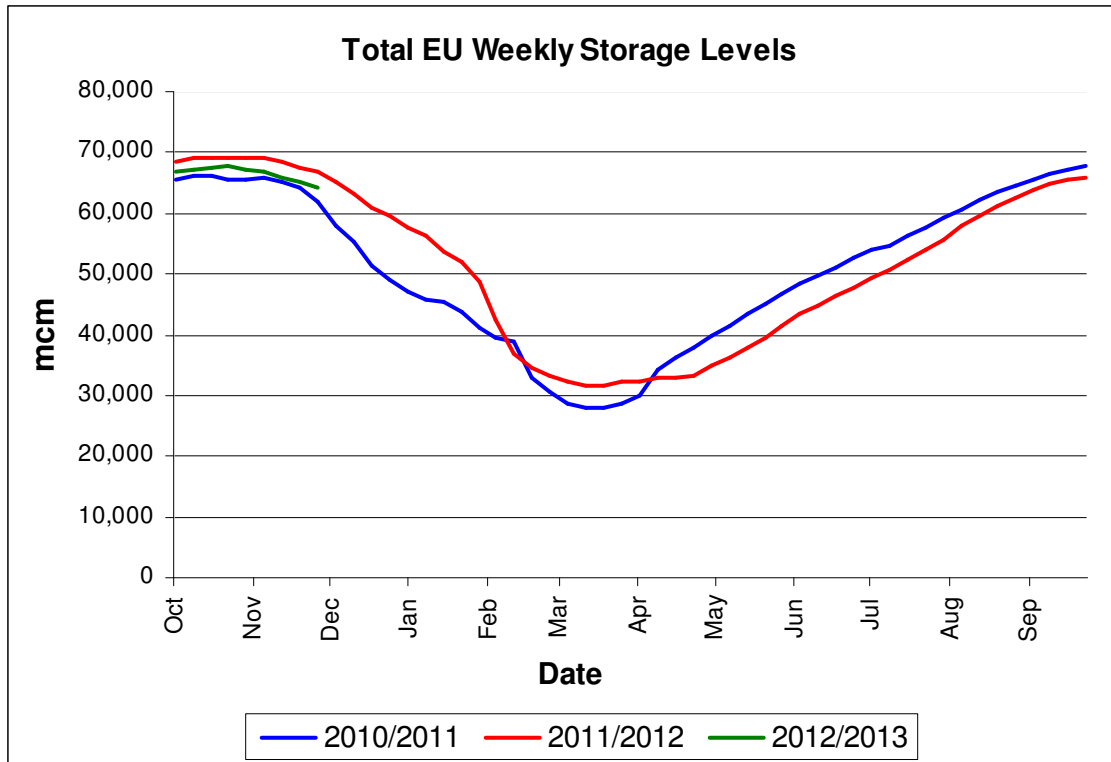
Storage Stocks - UK

From 1st October 2012 to 30th November 2012 vs Previous Years



Storage Stocks - EU

From 1st October 2012 to 30th November 2012 vs Previous Years



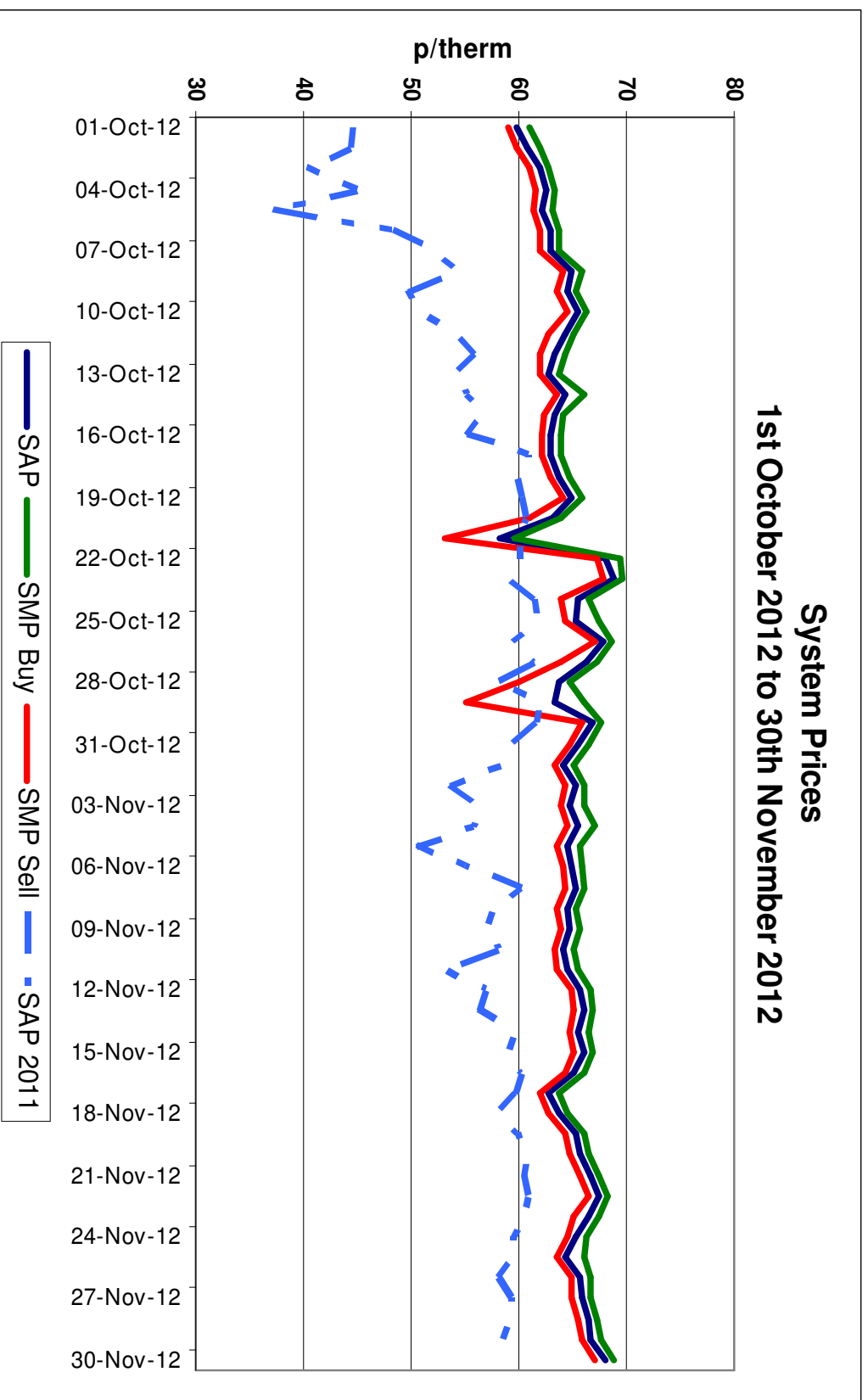
Stocklevel Status at 06:00CET on Wednesday 05.12.12		
Hub Area	Stock Level (mcm)	% Full
Baumgarten	12647	74%
Germany	17160	85%
Iberian	2269	89%
NBP	4399	92%
France	9629	77%
PSV	14654	92%
TTF (Eurohub)	1873	90%
ZEE	496	70%
Total Hubs	63126	83%

Transporter Actions and Neutrality



System Prices

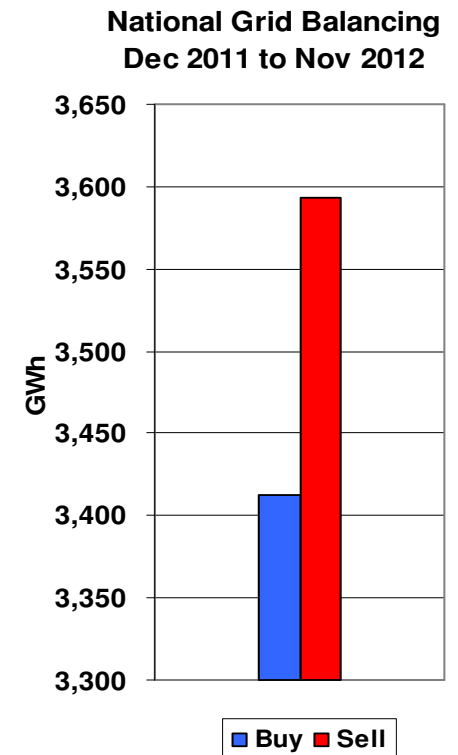
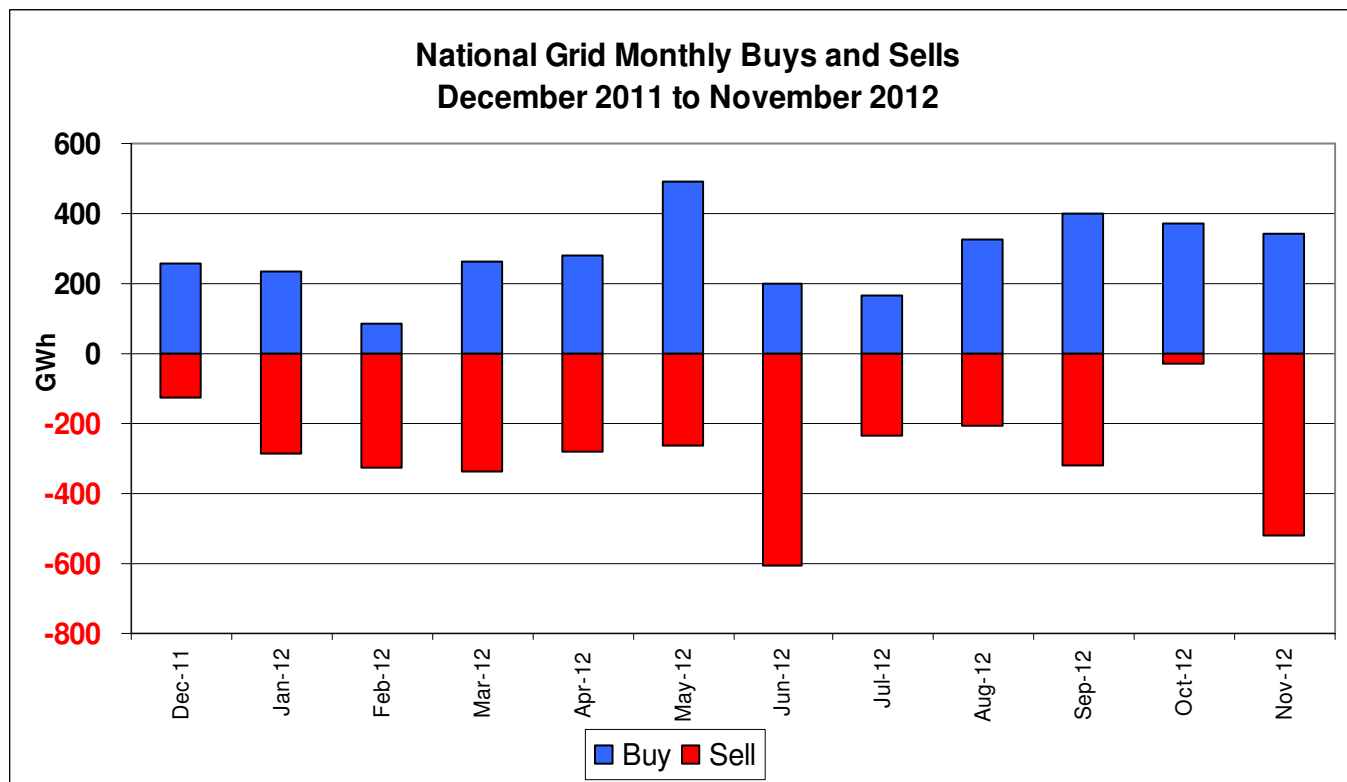
1st October 2012 to 30th November 2012



Transporter Energy Traded on the OCM

Buys and Sells by Month

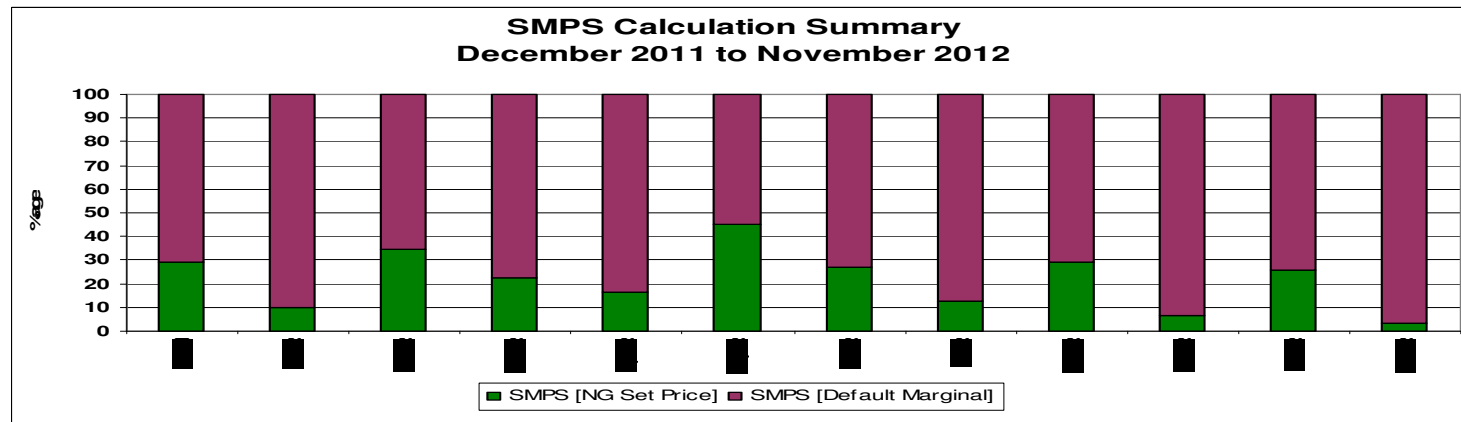
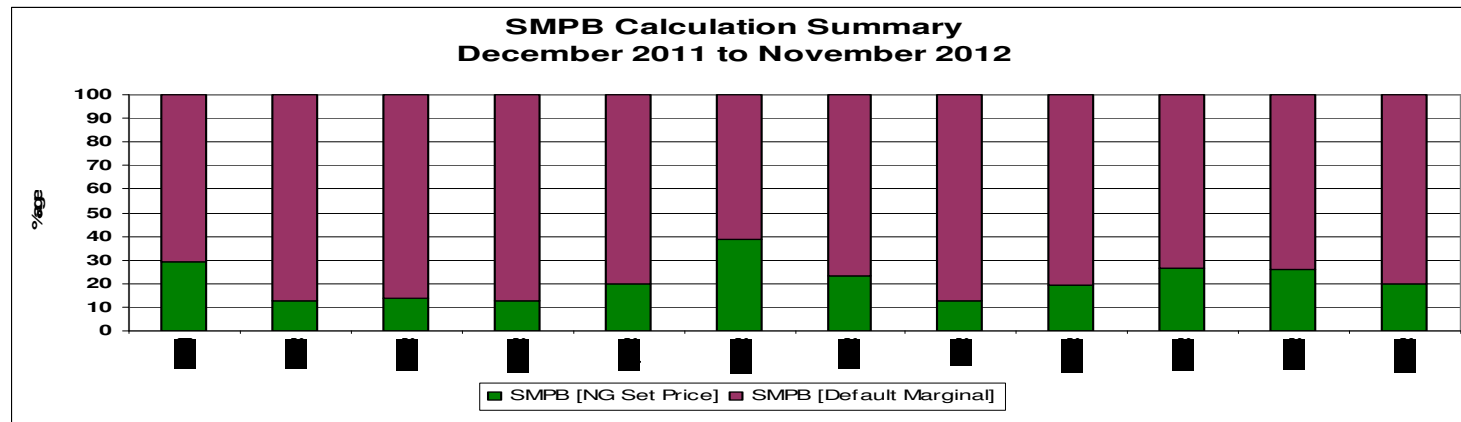
From December 2011 to November 2012



Days of Default SMP Prices

From December 2011 to November 2012

	SMP Buy	SMP SELL	Both
Oct-12	74%	74%	55%
Nov-12	80%	97%	77%

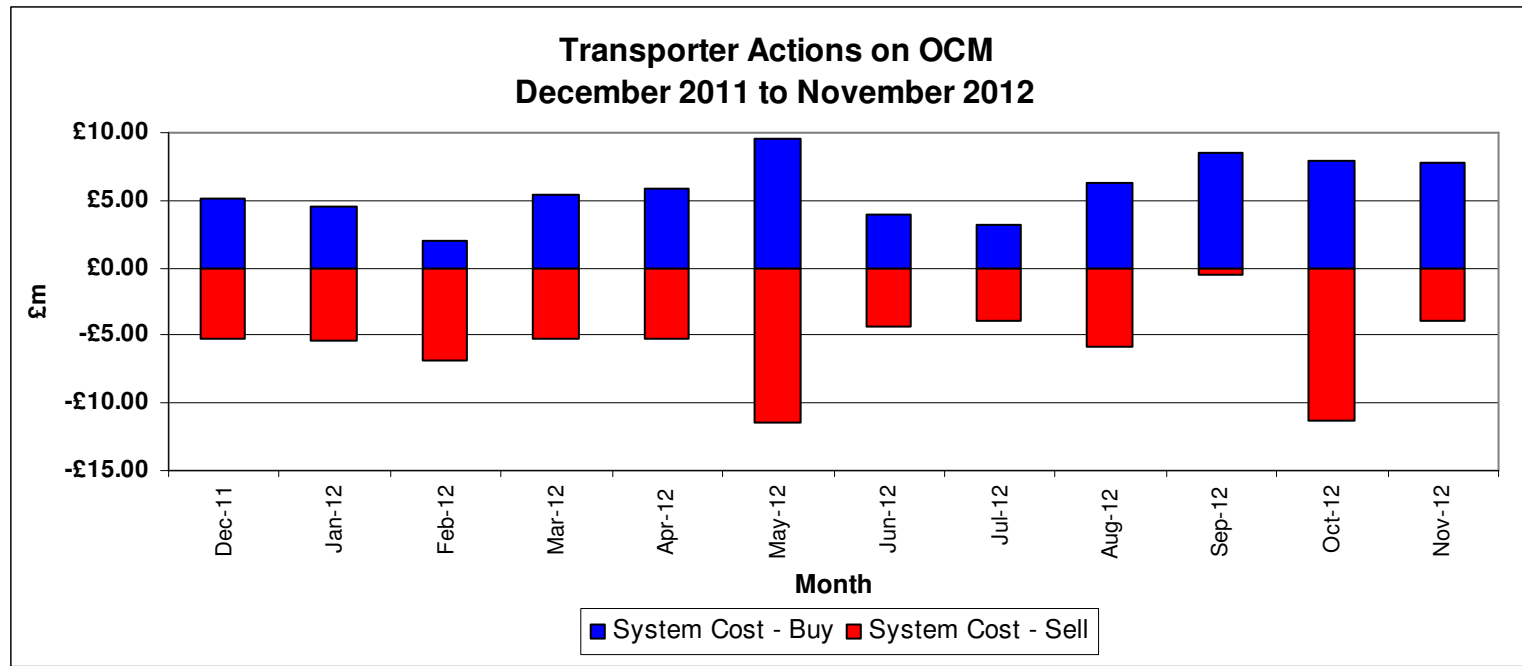


Transporter Actions on the OCM Mechanism nationalgrid

Revenues / Costs

From 1st December 2011 to 30th November 2012

	Quantity TWh	Average p/kWh	Price Therms	Cost £m
System Buy	3.41	2.057	60.49	£70.1
System Sell	3.593	1.933	56.64	-£69.2
Net Position	7.006			£0.86

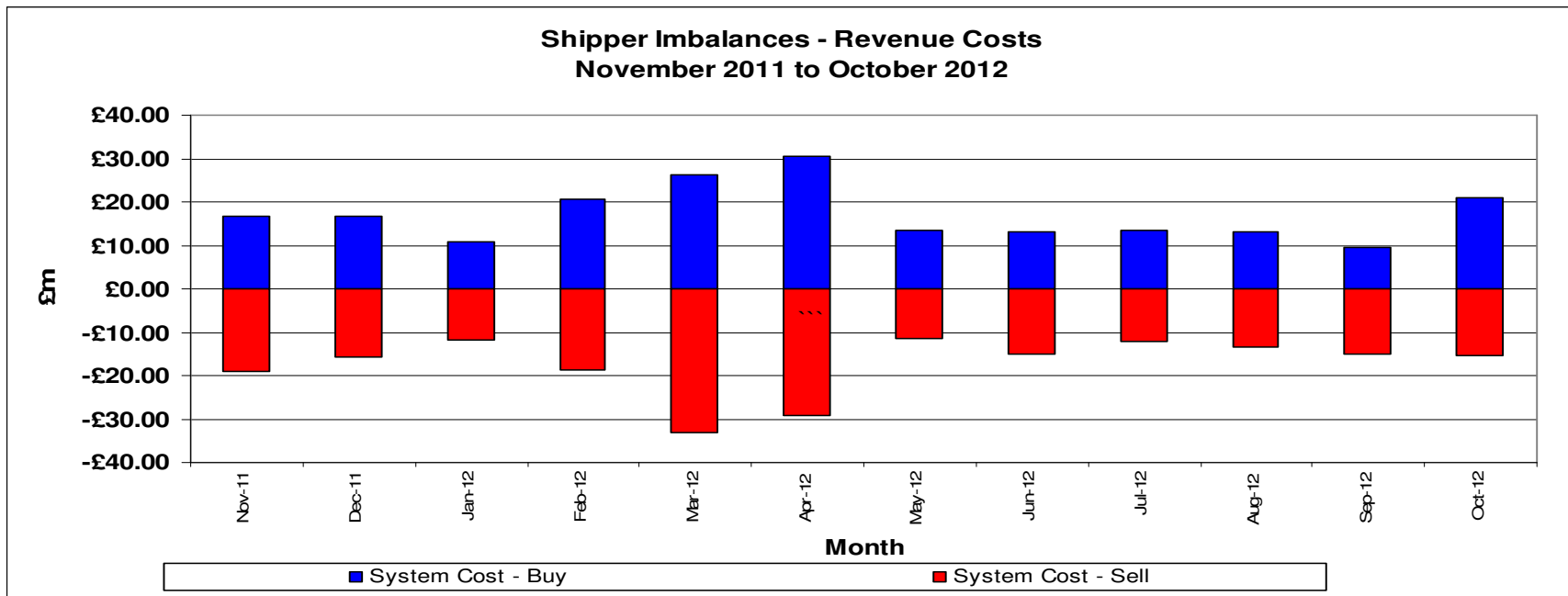


Shipper Imbalance

Revenues / Costs

From 1st November 2011 to 31st October 2012

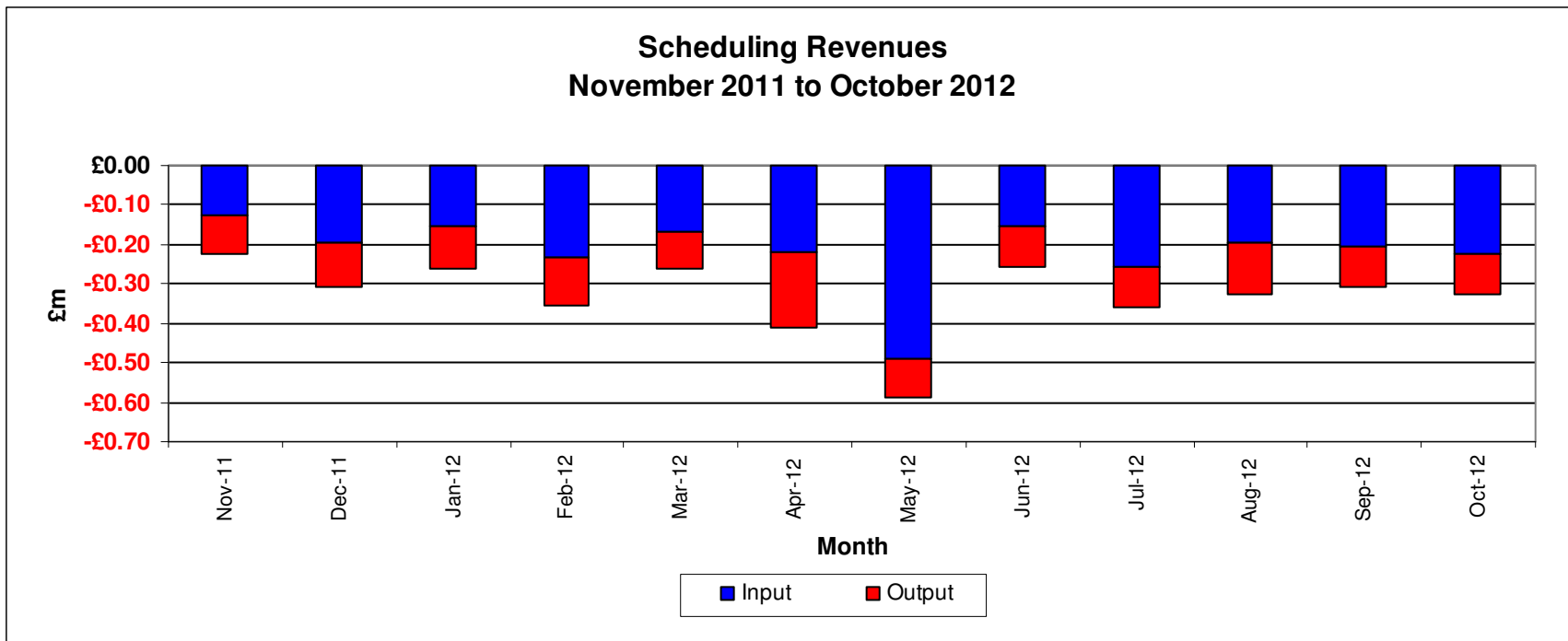
	Quantity (TWH)	Average Price P/KWh	Average price P/Therm	Cost £m
System Buy	9.47	1.932	56.62	£246.0
Shipper Over Delivery/Cost to Neutrality				
System Sell	-9.32	1.945	59.28	-£228.5
Shipper Under Delivery/Revenue to Neutrality				
Net Position	0.15			£17.6



Scheduling Revenues

From 1st November 2011 to 31st October 2012

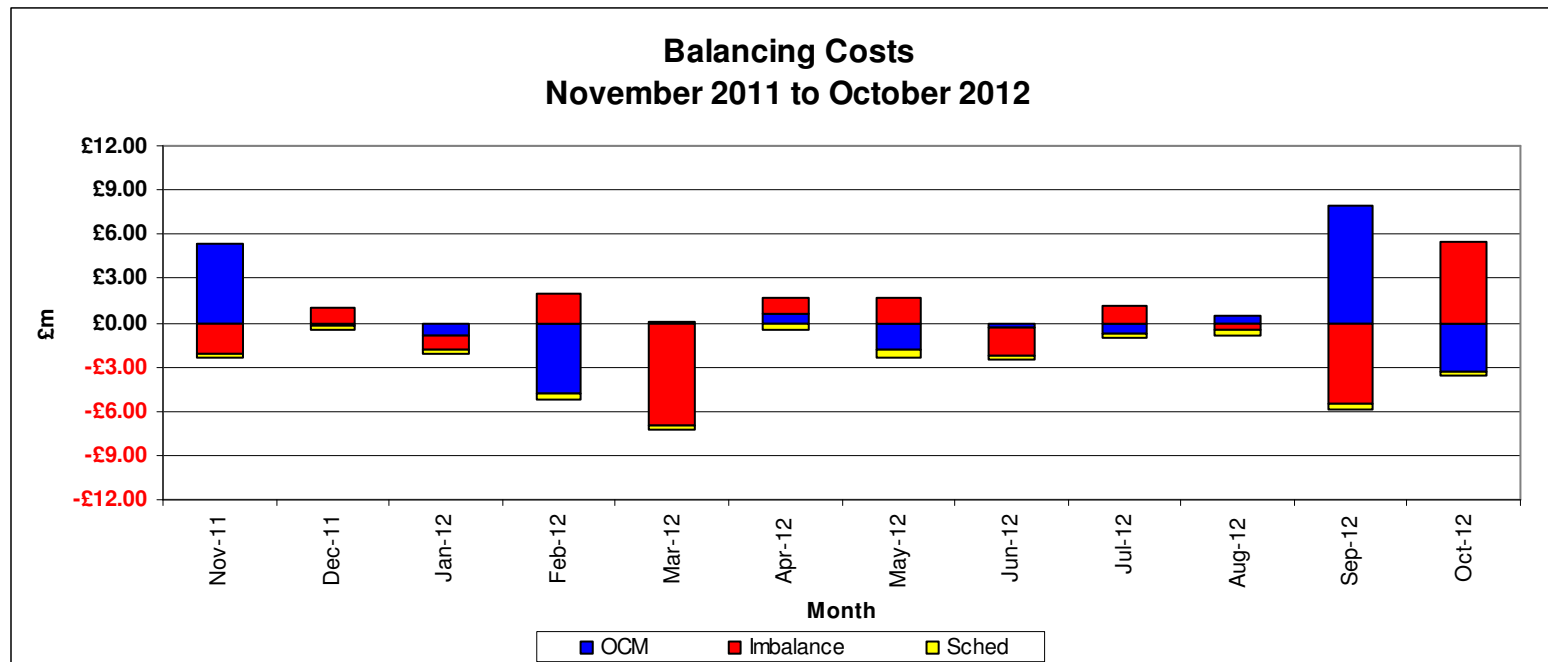
	Cost £m
Input	-£2.63
Output	-£1.36
Total	-£3.99



Balancing Costs

From 1st November 2011 to 31st October 2012

Transporter Actions on OCM	£m £2.35
Imbalance Charge	-£5.45
Scheduling Charge	<u>-£4.00</u>
Balancing Cost	-£7.10

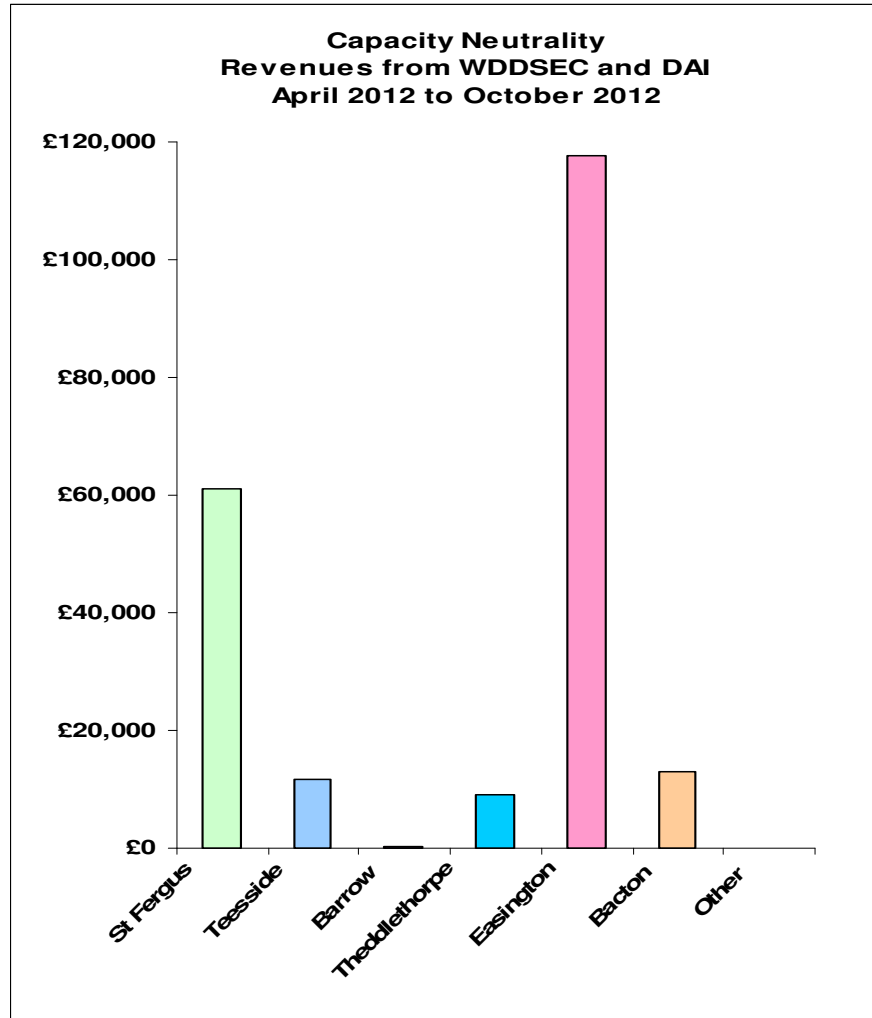


Capacity Neutrality

Revenues from WDDSEC and DAI

From 1st April 2012 to 31st October 2012

St Fergus	£61,097
Teesside	£11,795
Barrow	£145
Theddlethorpe	£9,031
Easington	£117,575
Bacton	£12,890
Other	£0
Net Revenue	£212,533



Capacity Neutrality

Prompt Buy Backs

From 1st April 2012 to 31st October 2012

ASEP	Cost	No. of Days	Energy (kWh)
St.Fergus	£0.00	0	0
Teesside	£0.00	0	0
Barrow	£0.00	0	0
Theddlethorpe	£0.00	0	0
Easington	£0.00	0	0
Bacton	£0.00	0	0
TOTAL	£0.00	0	0

Capacity Neutrality

Capacity Management Agreement (Including RMTTSEC)

From 1st April 2012 to 31st October 2012

Month	Cost
Apr-12	£0.00
May-12	£0.00
Jun-12	£0.00
Jul-12	£0.00
Aug-12	£0.00
Sep-12	£0.00
Oct-12	£0.00
Nov-12	
Dec-12	
Jan-13	
Feb-13	
Mar-13	
TOTAL *	£0.00

* Includes Total Capacity Constraint Management Costs implemented through MOD 0349 [Introduction of a Force Majeure Capacity Management Arrangement].

Capacity Neutrality

Revenues from Locational Sells and PRI Charges

From 1st April 2012 to 31st October 2012

Month	Revenue
Apr-12	£0.00
May-12	£0.00
Jun-12	£0.00
Jul-12	£0.00
Aug-12	£0.00
Sep-12	£0.00
Oct-12	£0.00
Nov-12	
Dec-12	
Jan-13	
Feb-13	
Mar-13	
TOTAL	£0.00

Capacity Neutrality

Revenues from Entry Cap Overruns and Non-Obligated Sales

From 1st April 2012 to 31st October 2012

Month	Entry Cap Overruns	Non-Obligated Sales
Apr-12	-£98,225	-£12
May-12	-£68,751	£0
Jun-12	-£3	£0
Jul-12	-£10,523	£0
Aug-12	-£3,207	£0
Sep-12	-£33,032	£0
Oct-12	-£27,884	-£55,974
Nov-12		
Dec-12		
Jan-13		
Feb-13		
Mar-13		
TOTAL	-£241,625	-£55,986

Capacity Neutrality Net Cost / Revenue

From 1st April 2012 to 31st October 2012

Month	Revenue
WDDSEC/DAI Revenue	-£212,533
Buy Back Costs	£0
Capacity management Agreement	£0
Entry Capacity Overrun Revenue	-£241,625
Non-Obligated Sales Revenue	-£55,986
Revenue from Locational Sells and PRI Charges	£0
Net Revenue	-£510,144

Operational Overview

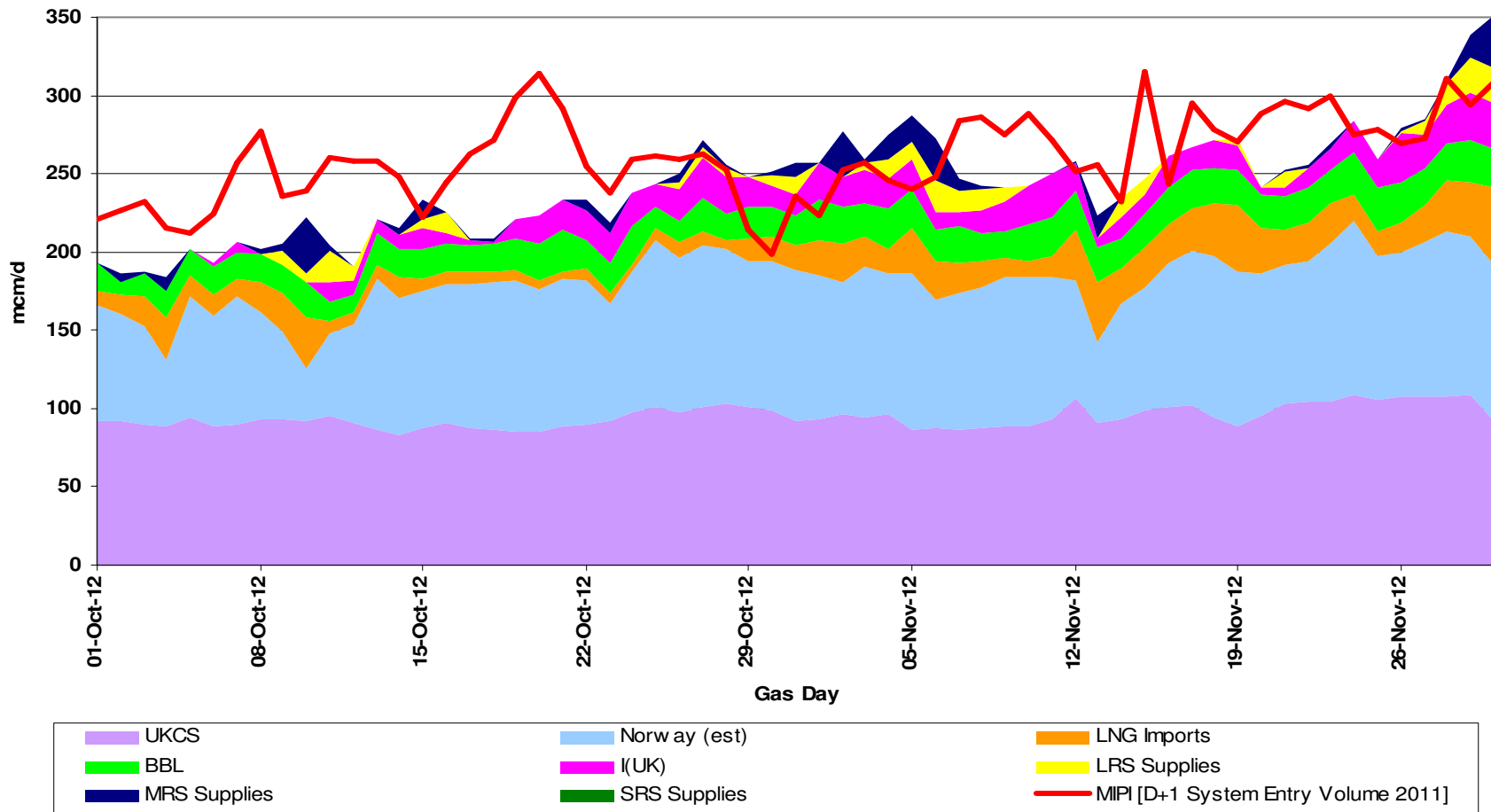


November 13th 2012

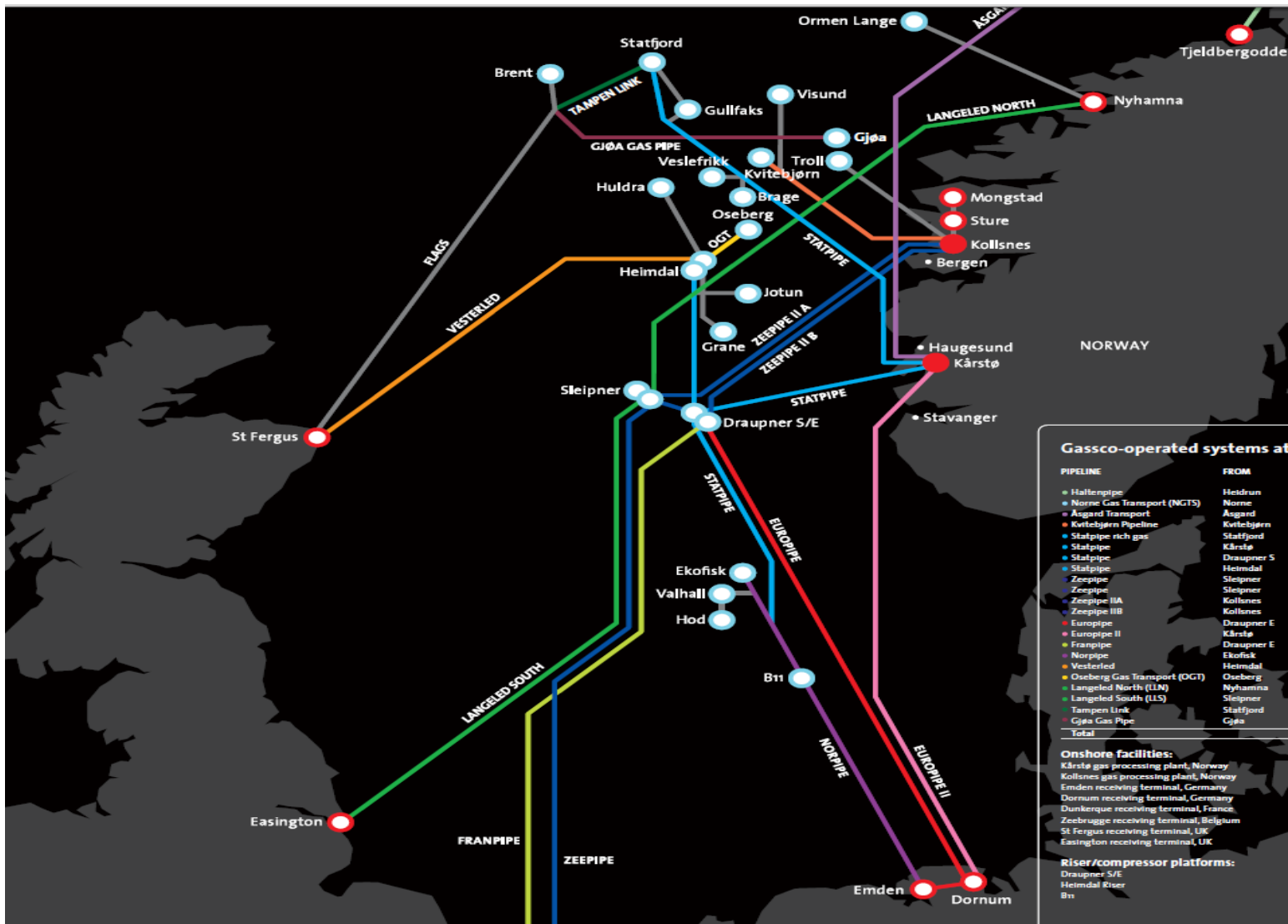
Gas Supply Breakdown

1st June 2012 to 30th September 2012

Gas Supply Breakdown
1st October 2012 to 30th November 2012

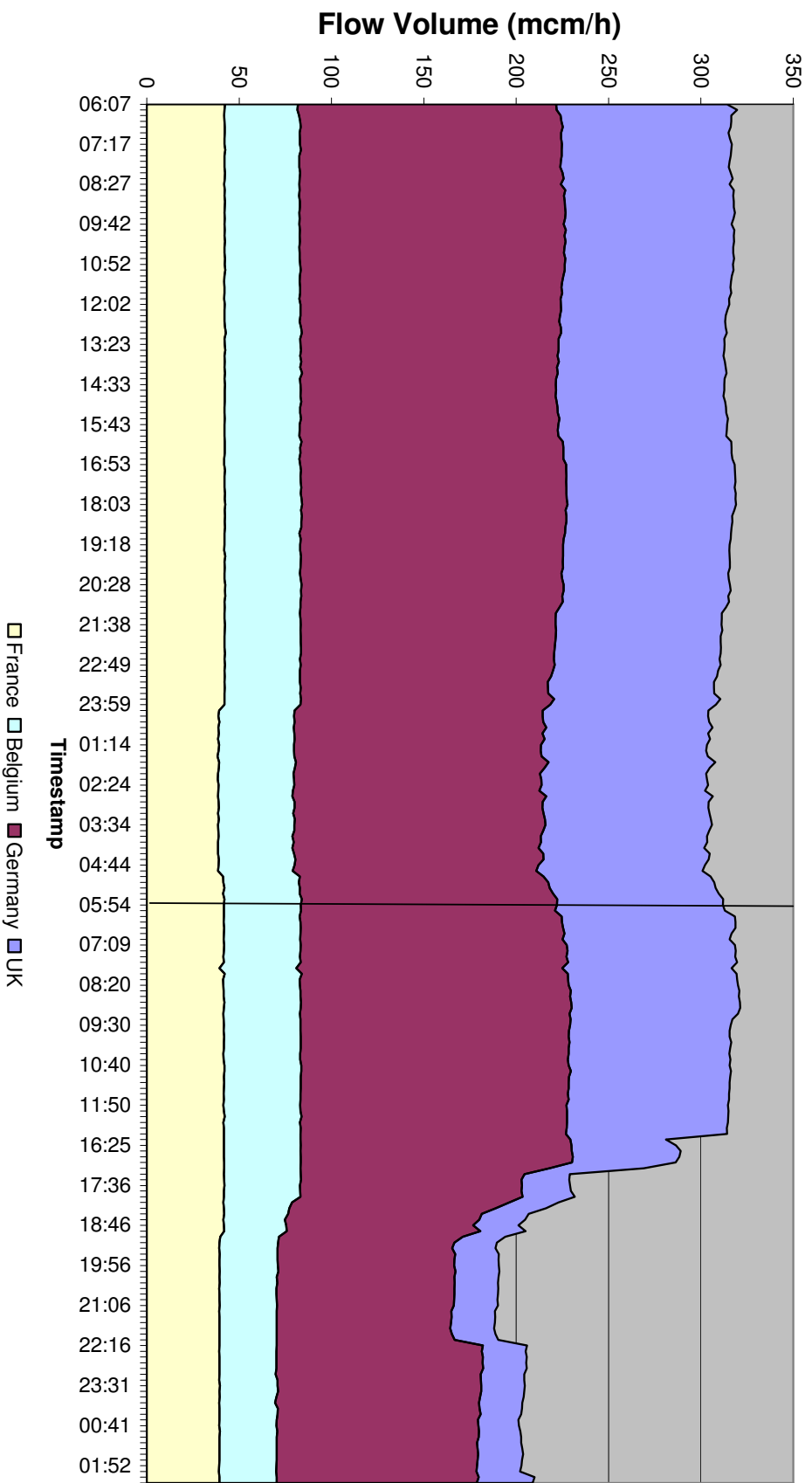


Norwegian Flows



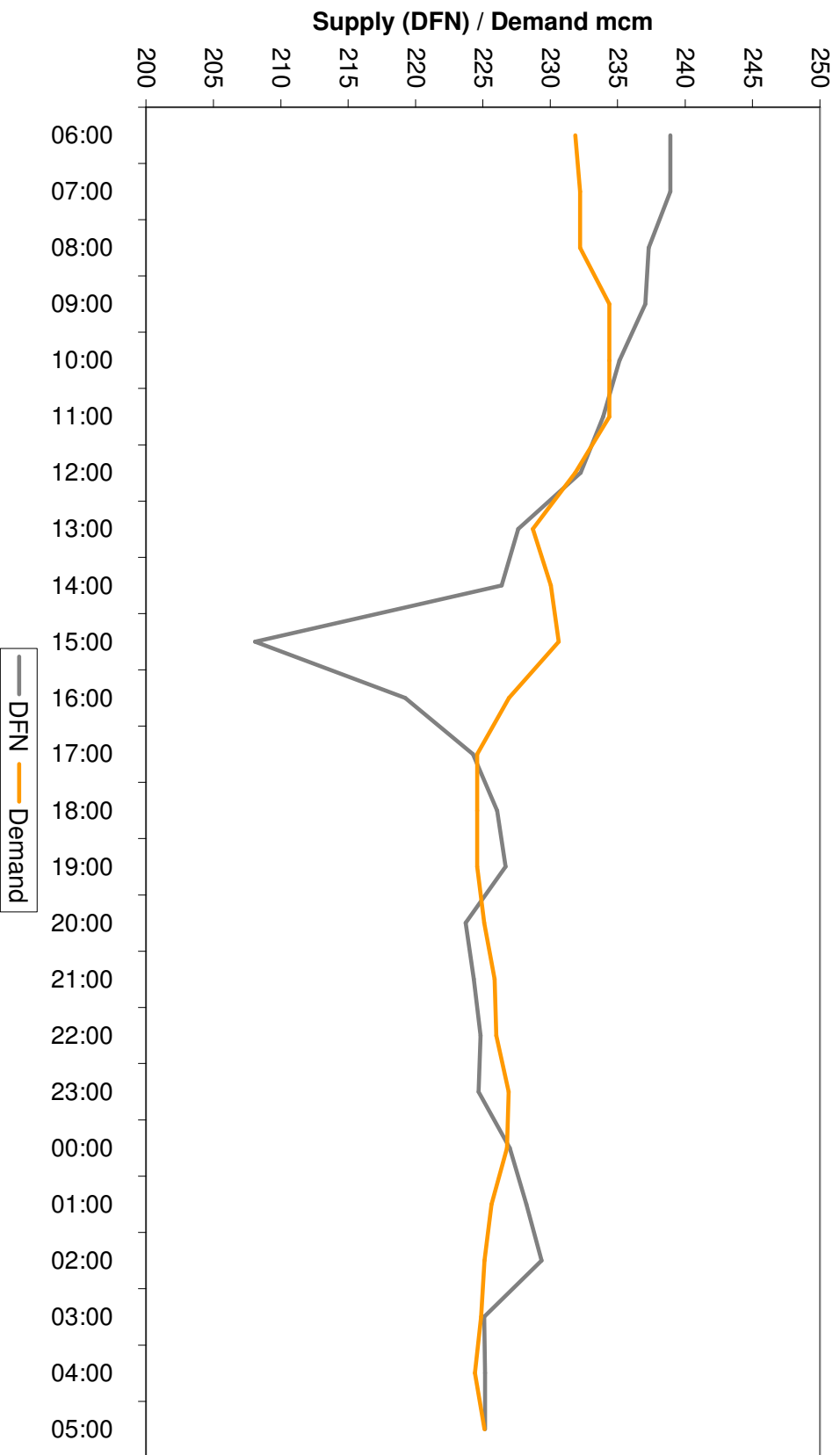
Norwegian Flows

Norwegian Flow 12-13th November



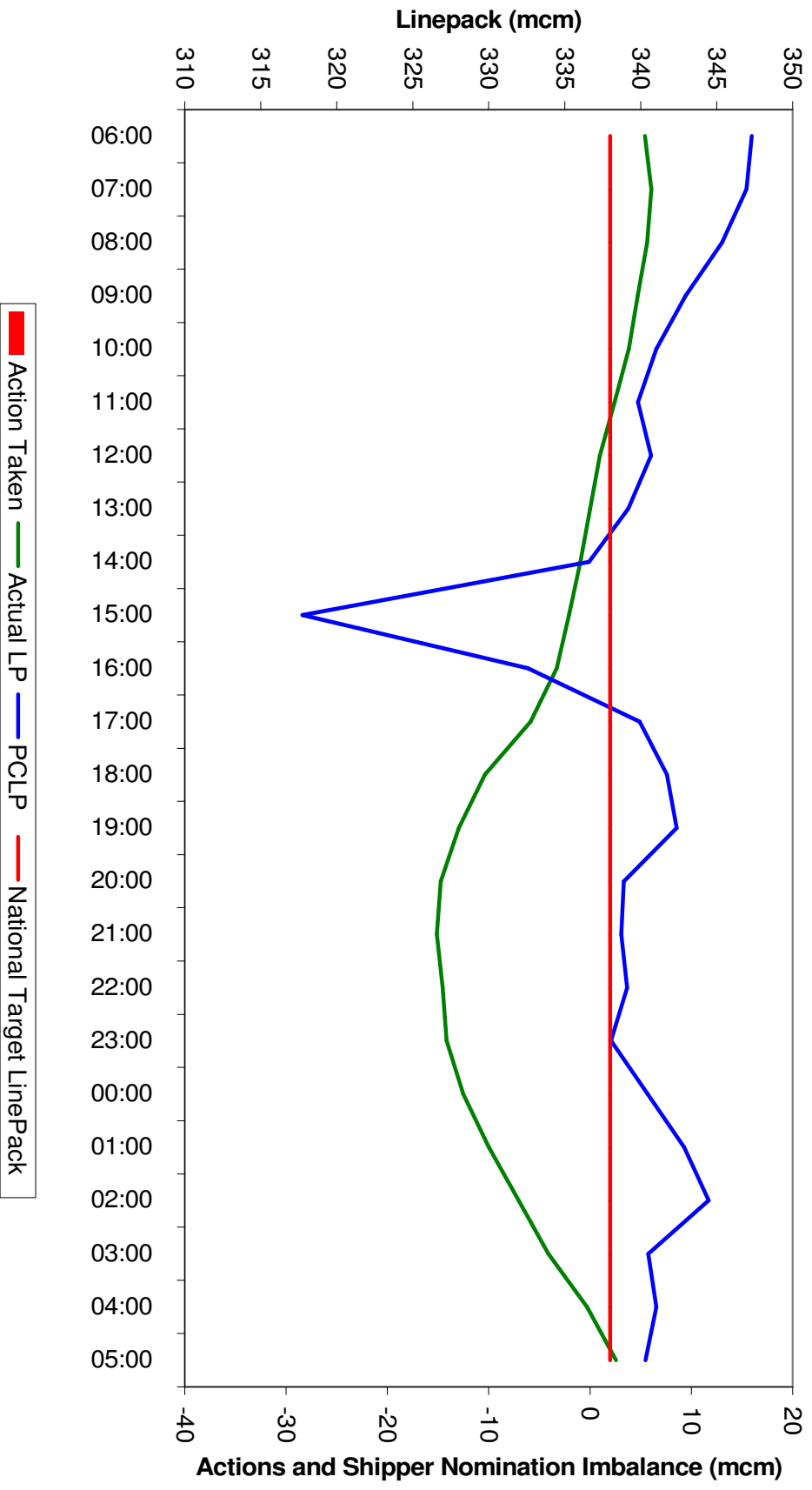
Supply & Demand Profiles

13th November - Supply/Demand Profiles



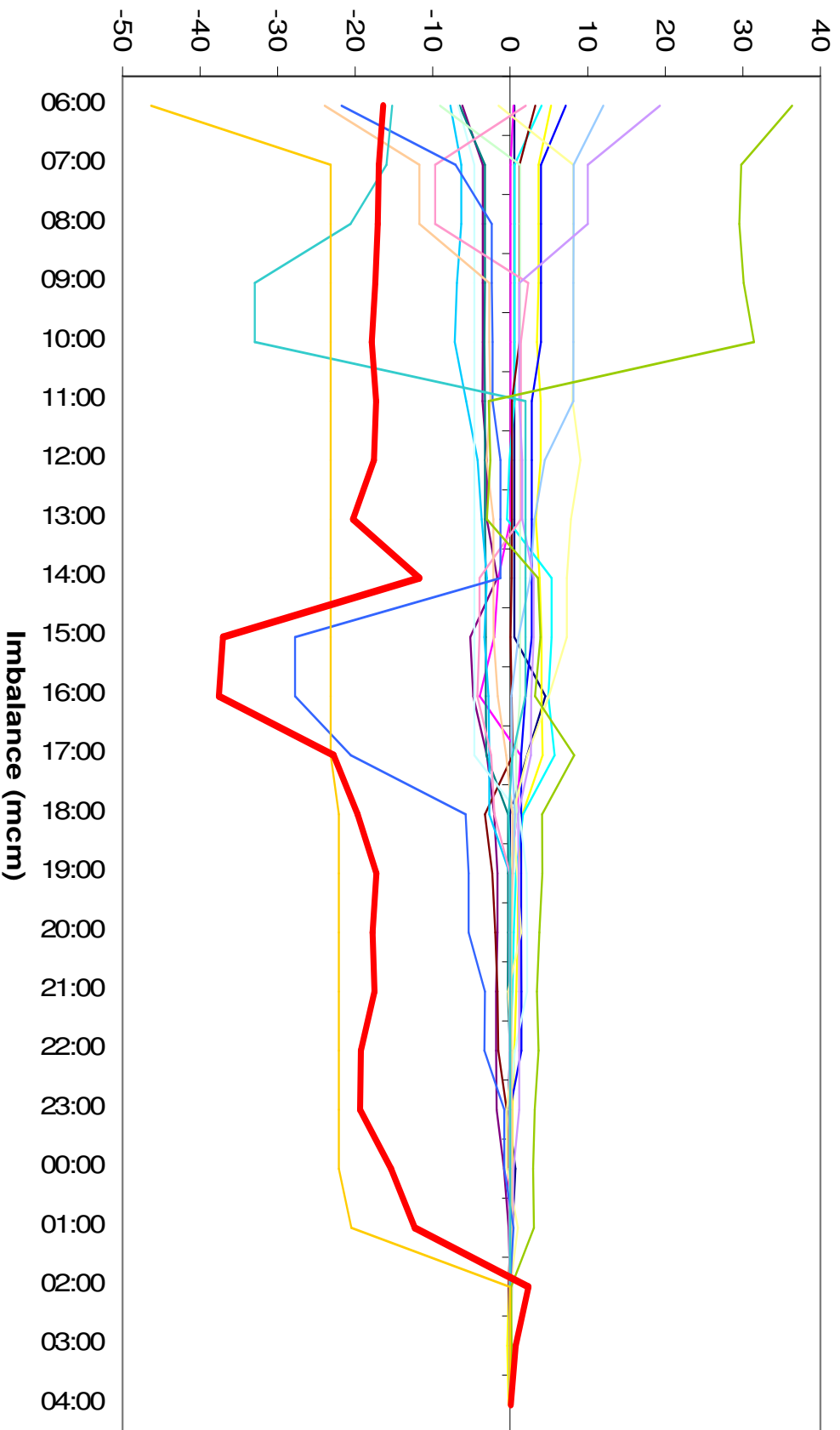
Linepack

13th November - Linepack



Hourly Nomination Imbalance

Hourly Nomination Imbalance



Flows

