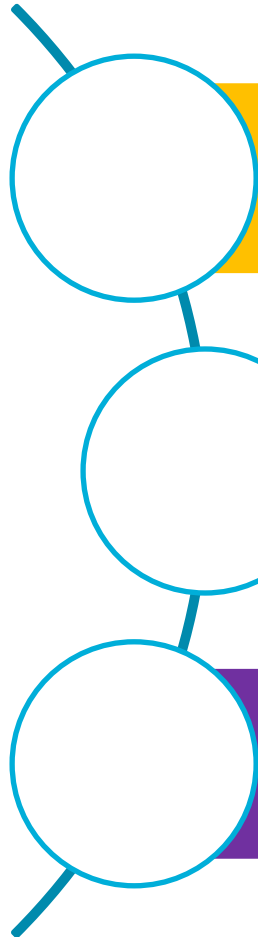


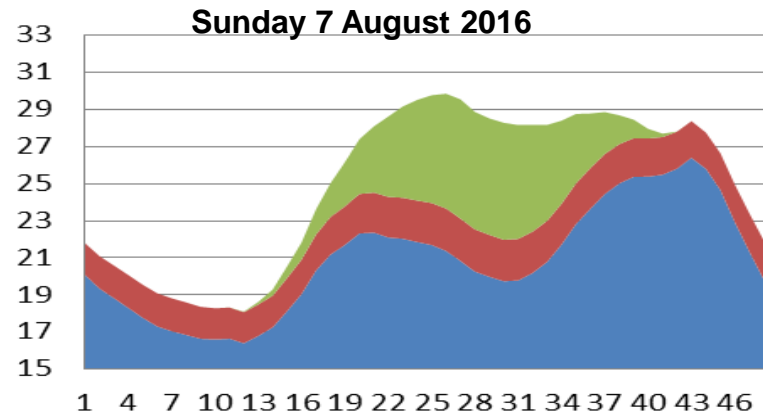
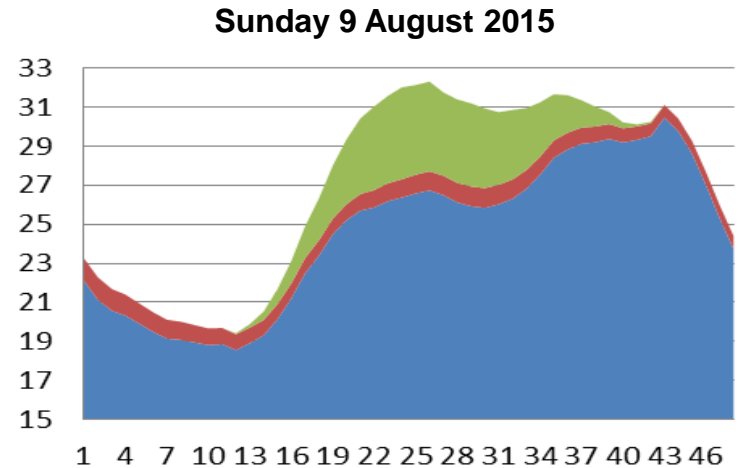
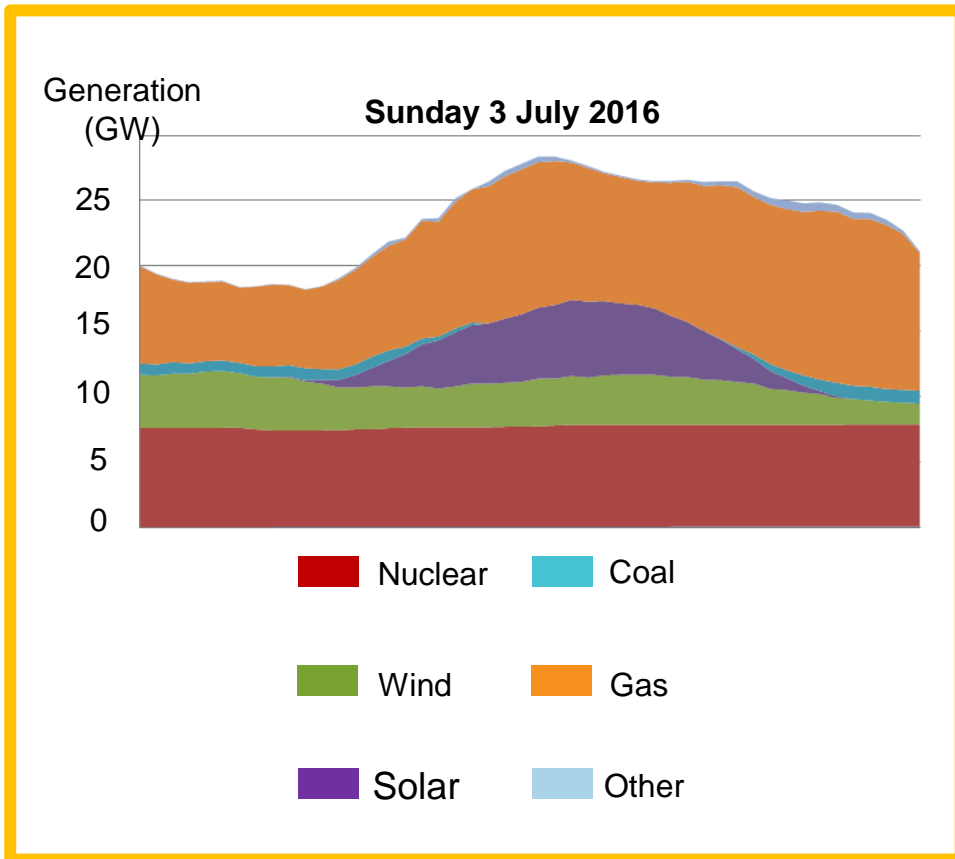
Summer Operability

Claire Spedding
Commercial Operations Manager

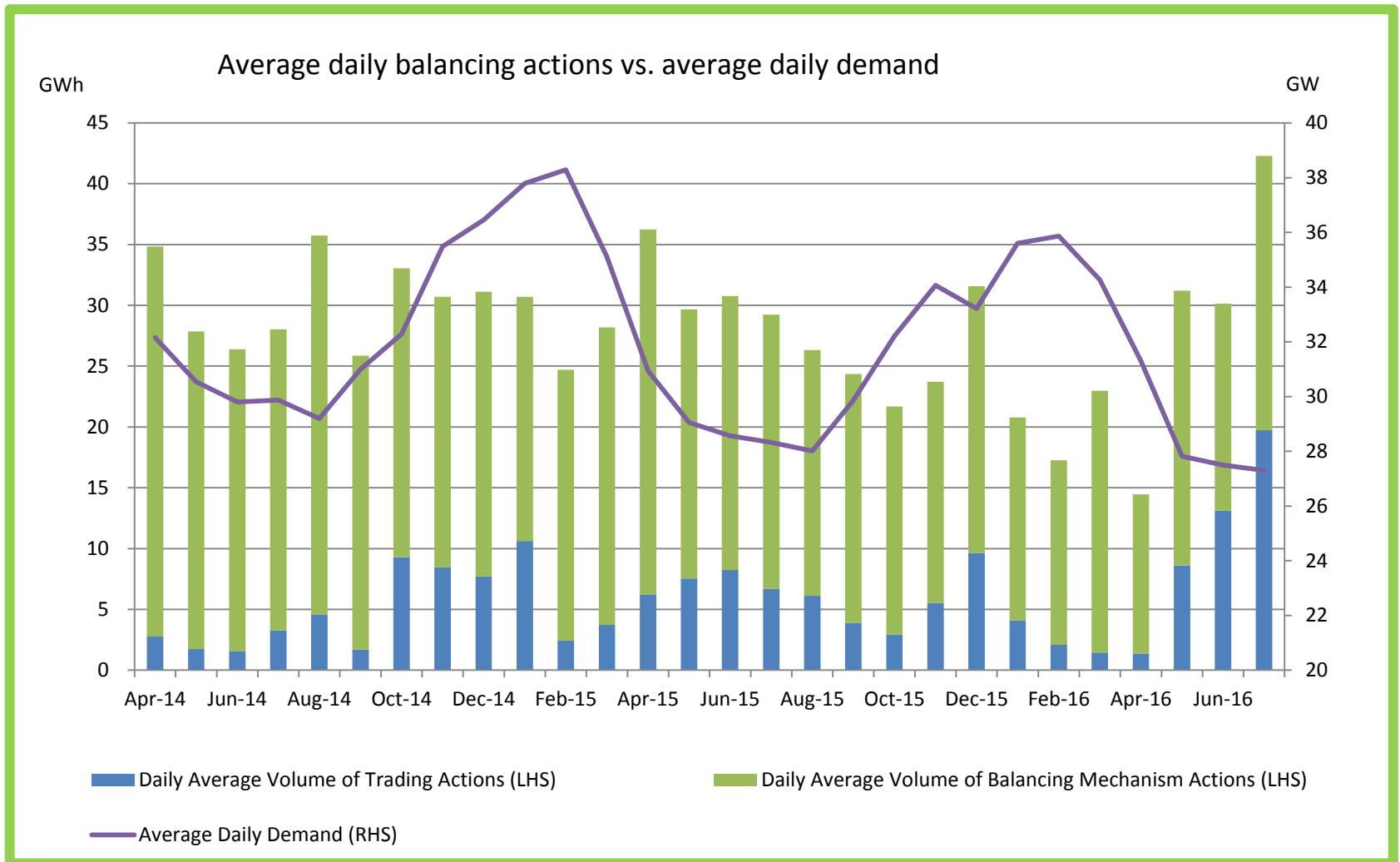
Agenda

- 
- What did operating the network feel like this summer?
 - How does this manifest itself in terms of actions National Grid must take?
 - What lessons are we learning for next year?

Summer operating context



System requirements



Playing whac-a mole



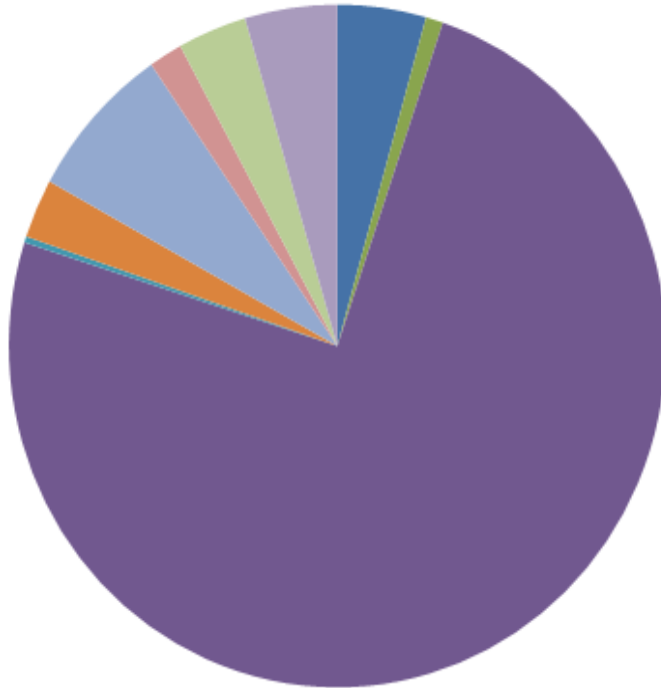
Constraints

Margin

Voltage

Inertia

7th August case study

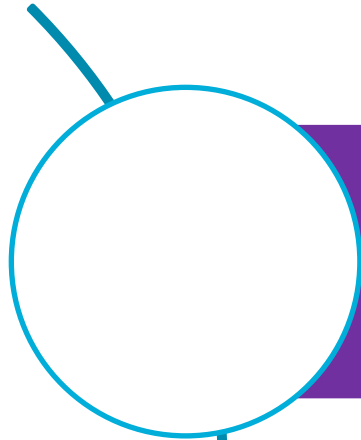


- Sunny and very windy
- Record low demand: 16.4 GW early morning & 19.7GW in afternoon
- Mid holiday season
- Not very warm
- At point of lowest demand, circa 70% of market repositioned

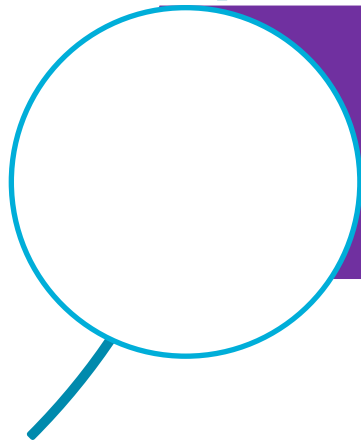
Total cost of balancing actions: £9.9m

- Constraints £7.4m**
- Black Start: £0.34m**
- Response: £0.73m**

Preparing for future years



Transparency of information



New contracts and services

Q&A

claire.spedding@nationalgrid.com