

# MIPI EU2015 Project



November 2015

## EU2015 Project Success!

---

- Our 'EU2015' project has completed;
  - New requirements to publish additional data, as a result of new EU network codes.
- The project delivered a series of new data items, re-named others, reconfigured screens and changed report templates.
- We had a couple of unforeseen issues, which have now been resolved.
- We're continuing to monitor the system to ensure that it remains stable.

## Missed It?! A summary of what changed...

---

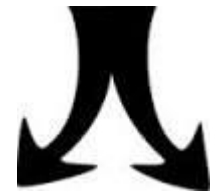
### 1<sup>st</sup> October -- Gas day re-aligned to 05:00-04:59

- Data items re-named
- Report templates re-configured
- Page timestamps re-aligned
- Tool Tips / Report Help text amended



### 1<sup>st</sup> November - New CMP rules & Bacton ASEP commercially 'Split'

- New and re-named data items
- 6 completely new reports
- Amendments to existing report templates



**A total of 538 new data items**

## The Full vs. Alternative Solution

---

### We implemented the 'Full' solution...

- We were aware that adding extra data items posed risks to the performance of the MIPI application.
- An Alternative option, with reduced functionality, was created, which we could call upon should MIPI find it difficult to cope with new demand.
- There has been no adverse impact to MIPI so far as a result of the project so we have not called upon the Alternative solution.
- We'll continue to monitor performance and re-assess as required.

# Application Performance



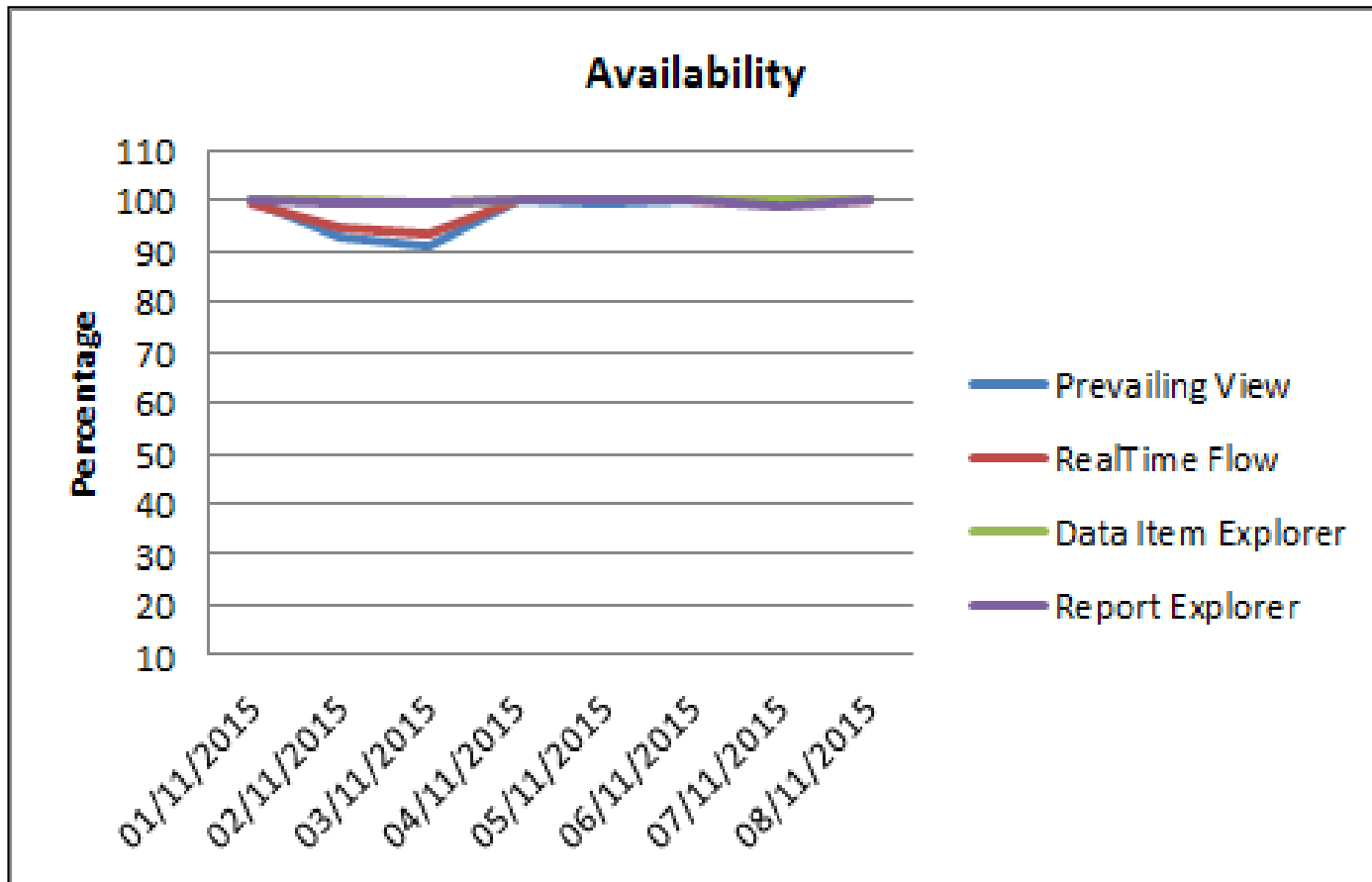
## Update

---

- A significant achievement by the project team to apply all EU-obligated changes and ensure provision of new data.
- Application performance during October/November has been very good, with on average ~100% page availability.
- An issue with the API service caused a huge surge in hits, but this is now resolved and hits are on a downward trend.
- Maintenance work on 7<sup>th</sup> November was successful.
- Further maintenance on 28<sup>th</sup> November;
  - <http://www2.nationalgrid.com/uk/industry-information/gas-transmission-operational-data/>

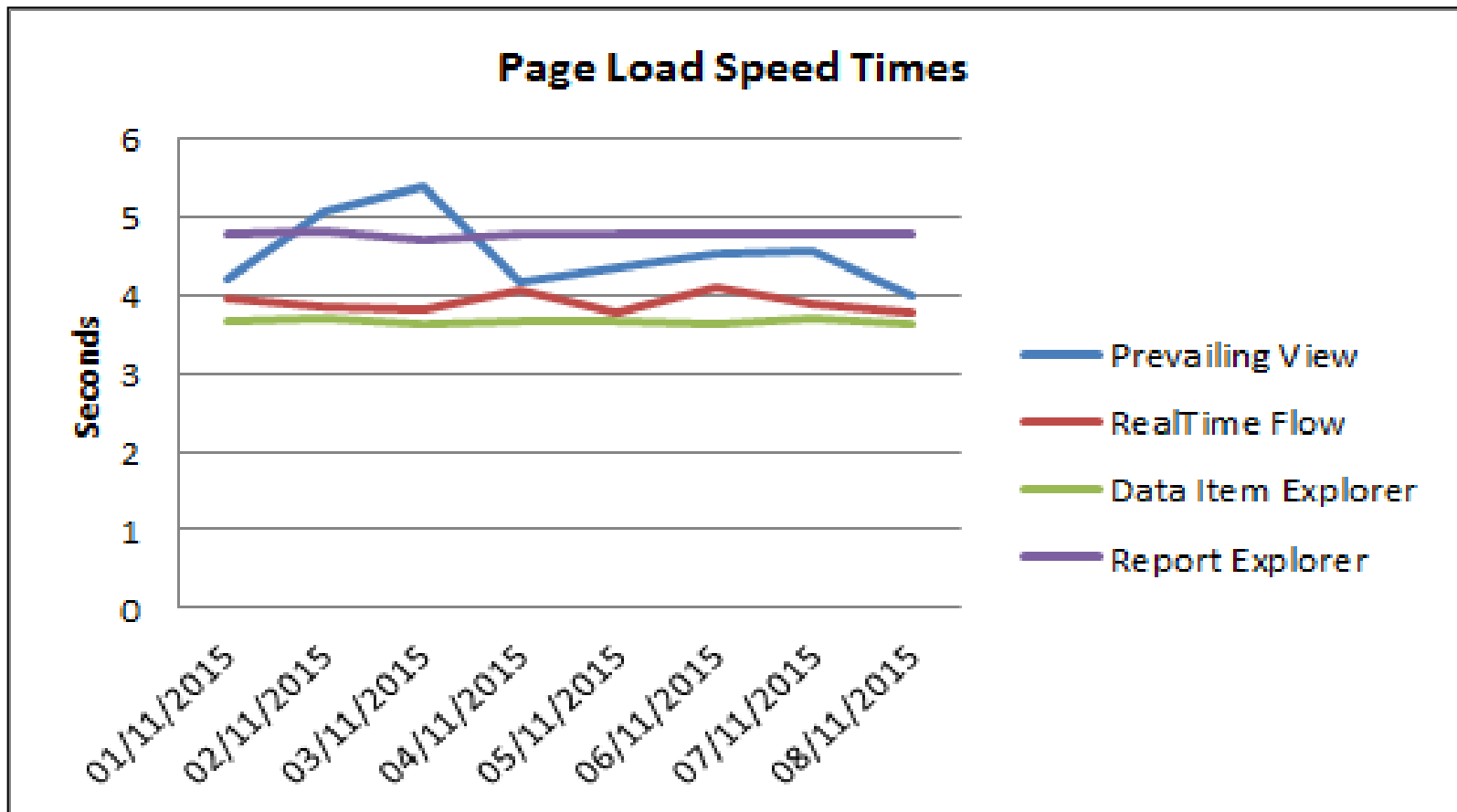
# Page Availability

- Availability dipped to ~90% very early November but has since improved.
- Confirmed as a consequence of network issues, NOT errors with the applications.



# Page Load Speeds

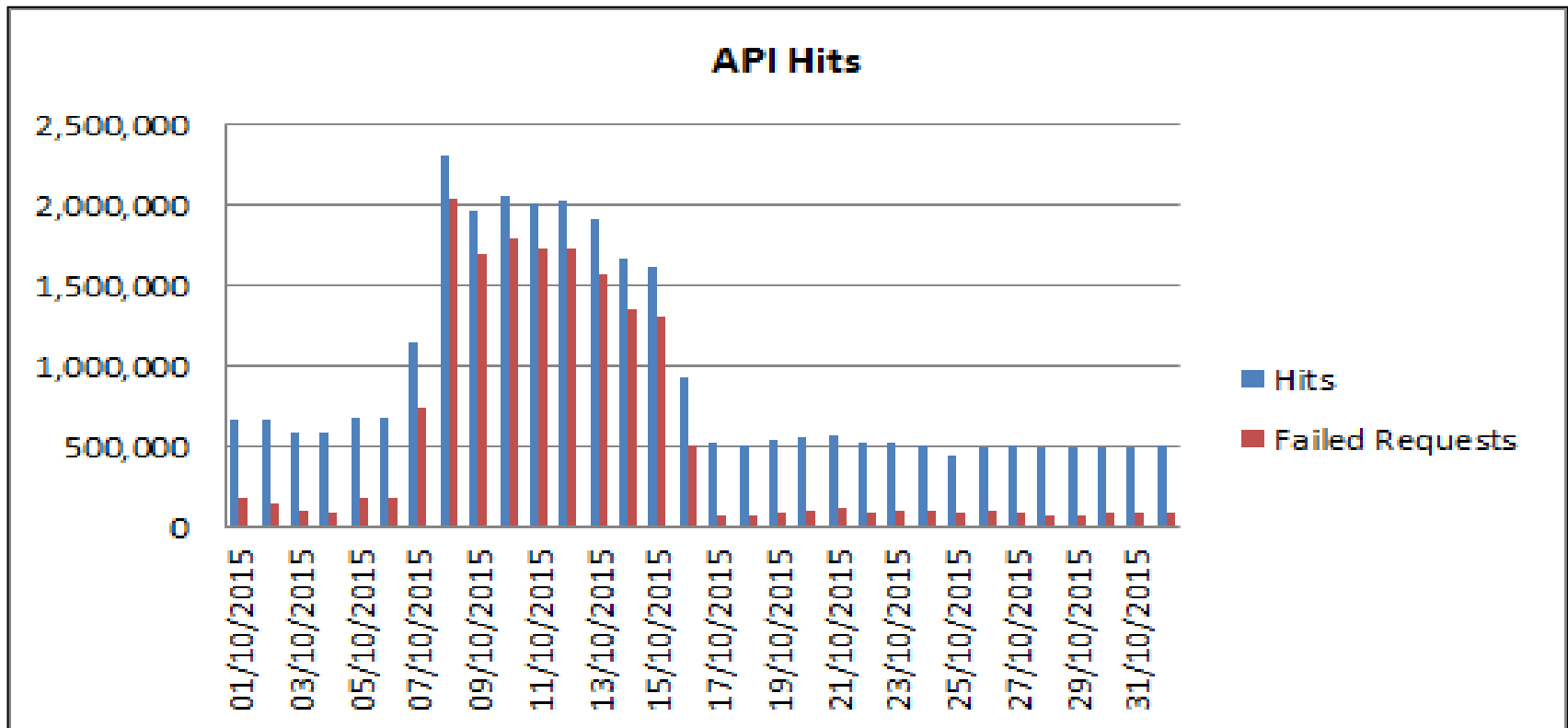
- Generally, pages take less than 5 seconds to load.
- Network issues caused a peak to Prevailing View early-November.



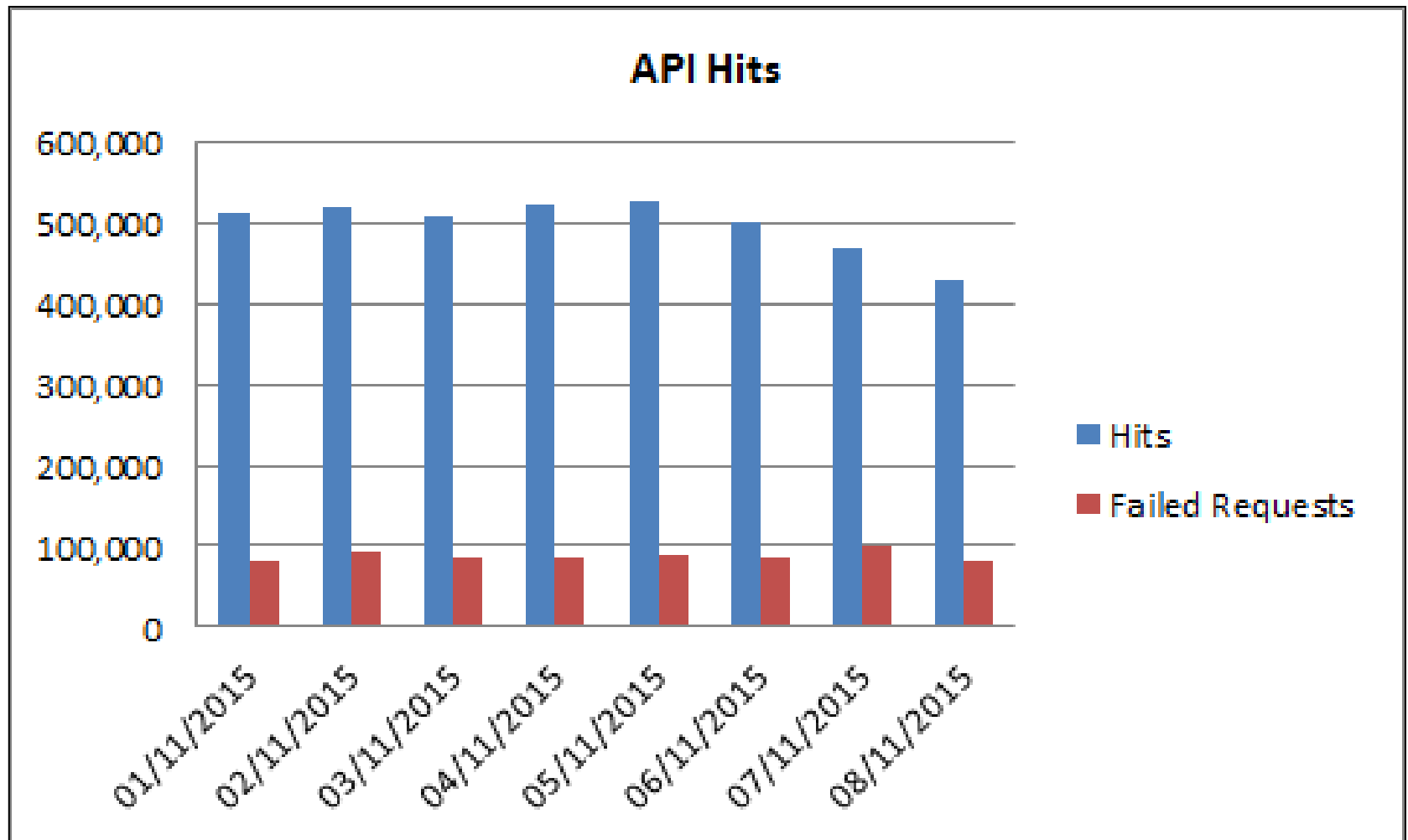


# API

- A significant increase to API hits early-mid October; a consequence of an issue with the Pull API service;
  - Requests were not returning data if the 'Latest Flag' Parameter was set to 'N'.
- The issue was promptly resolved, and API hits have now reduced.



# API - November



## Further Information

---

### General Queries

- Operational Compliance
- Telephone: 01926 65 6474
- Email: [sysop.centre.reporting@nationalgrid.com](mailto:sysop.centre.reporting@nationalgrid.com)

### EU2015 Information Provision

- Supporting Information: 'Project: EU2015'
- <http://www2.nationalgrid.com/uk/industry-information/gas-transmission-operational-data/supporting-information/>