

# Operational Forum Meeting



10th September 2015, 10:30AM  
Radisson Grafton Hotel, 130 Tottenham Court Road, London.

# System Management Principles Statement



- **Compliance report for June, July and August 2015**
- **Summary of balancing actions and breaches for June, July and August 2015**
- **Performance compared to last year**

## Summary Report

	<b>Jun-15</b>	<b>Jul-15</b>	<b>Aug-15</b>
Total Number of Buy Actions	12	14	11
Total Number of Sell Actions	1	2	4
<b>Total</b>	<b>13</b>	<b>16</b>	<b>15</b>

	<b>Jun-15</b>	<b>Jul-15</b>	<b>Aug-15</b>
Number of Material Breaches	0	0	0
Number of Non-Material Breaches	0	0	0

	<b>Aug-15</b>	<b>Aug-14</b>
Number of Balancing Actions (Calendar year to date)	128	174
Number of Material Breaches (Calendar year to date)	0	0
Number of Non-Material Breaches (Calendar year to date)	0	0

## Operational Overview

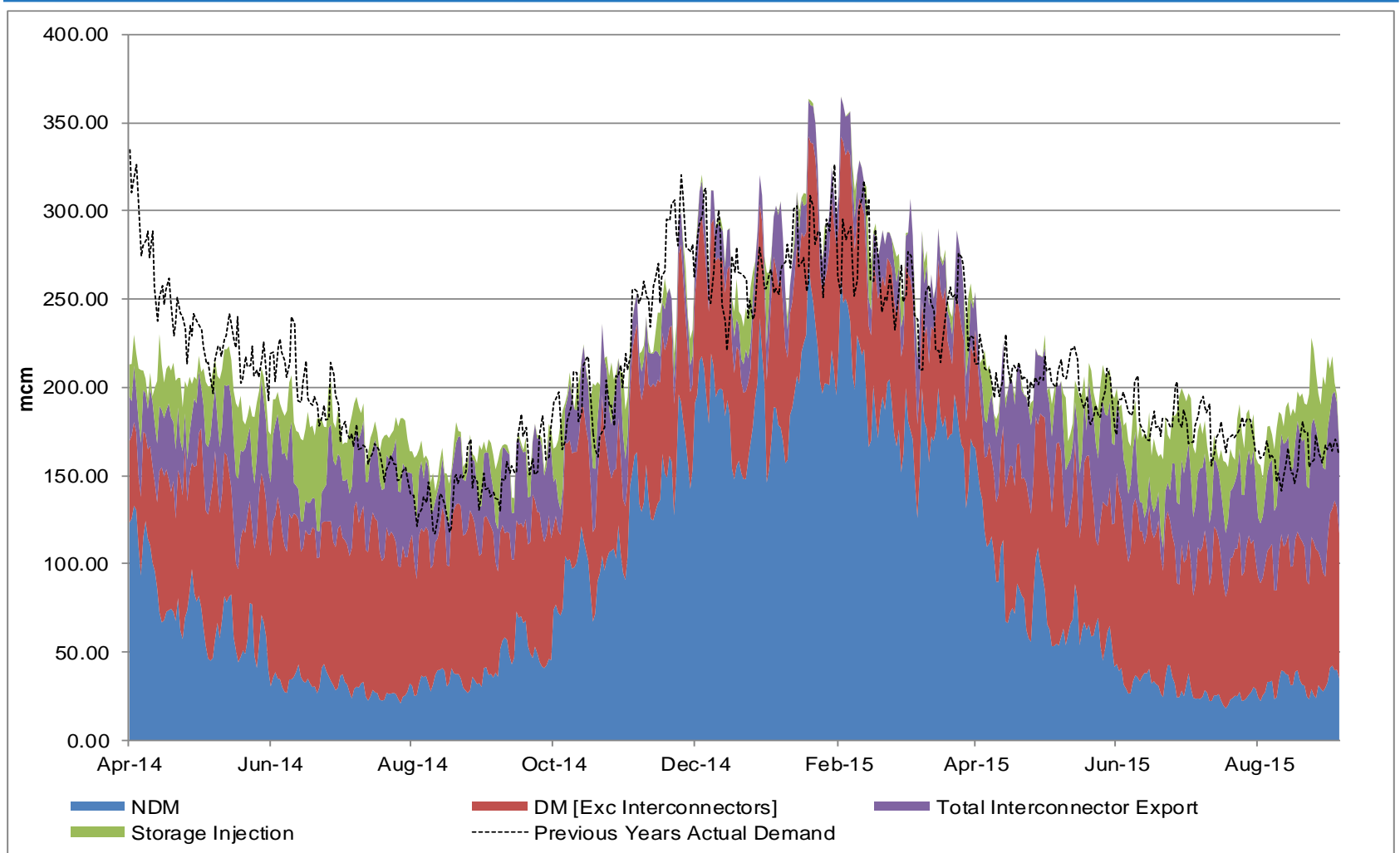


## Demands



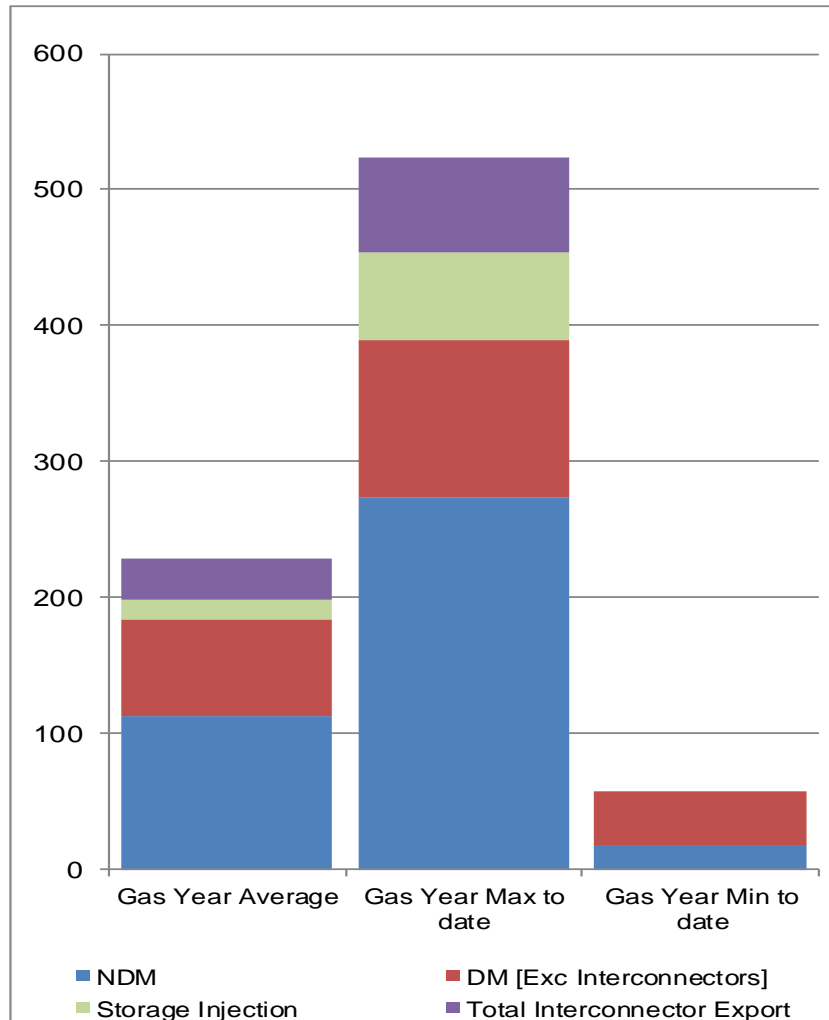
# Gas Demand Breakdown

1<sup>st</sup> April 2014 to 5<sup>th</sup> September 2015 vs Previous Year



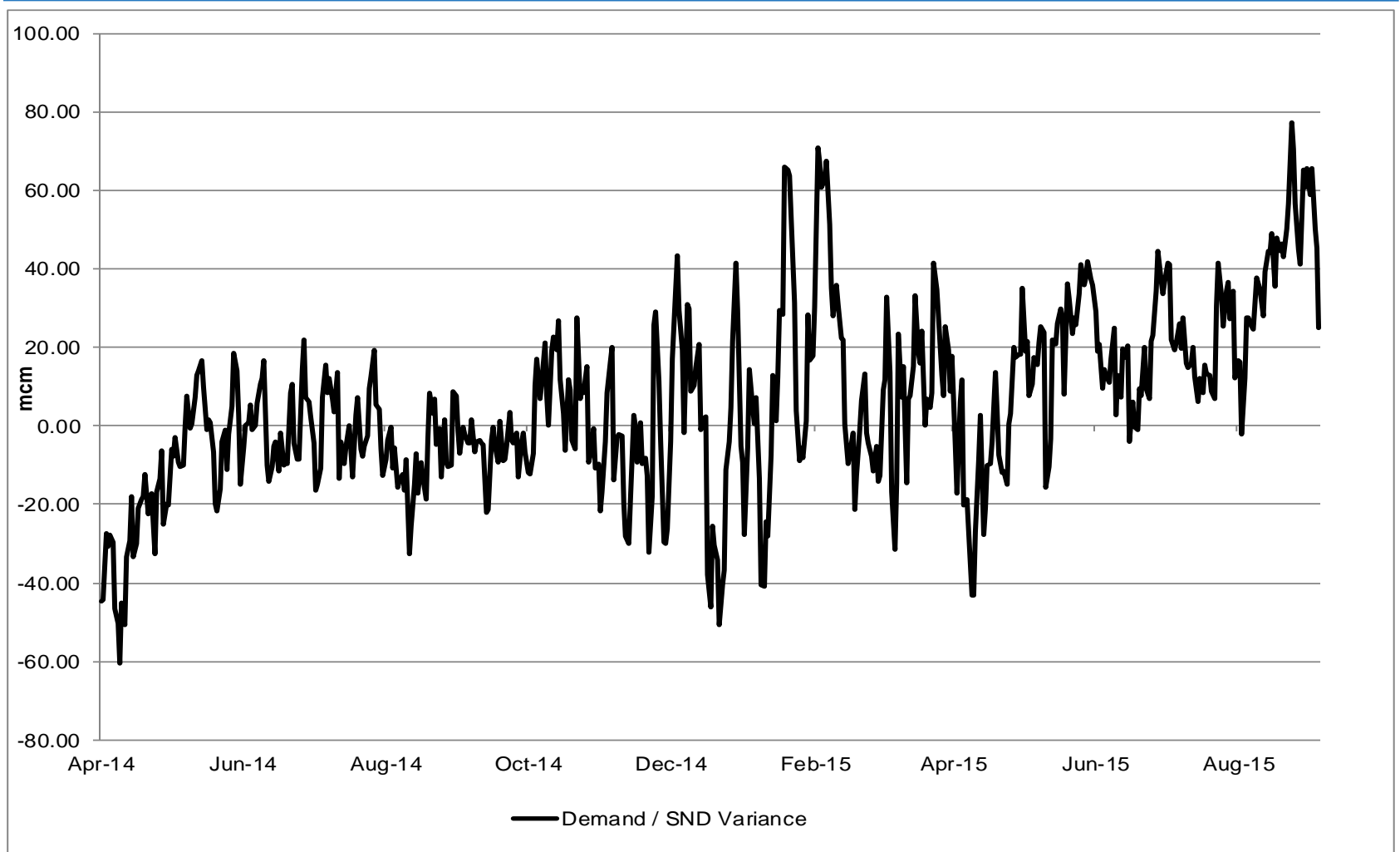
# Gas Demand Statistics

1<sup>st</sup> October 2014 to 5<sup>th</sup> September 2015



# Demand Variance from SND

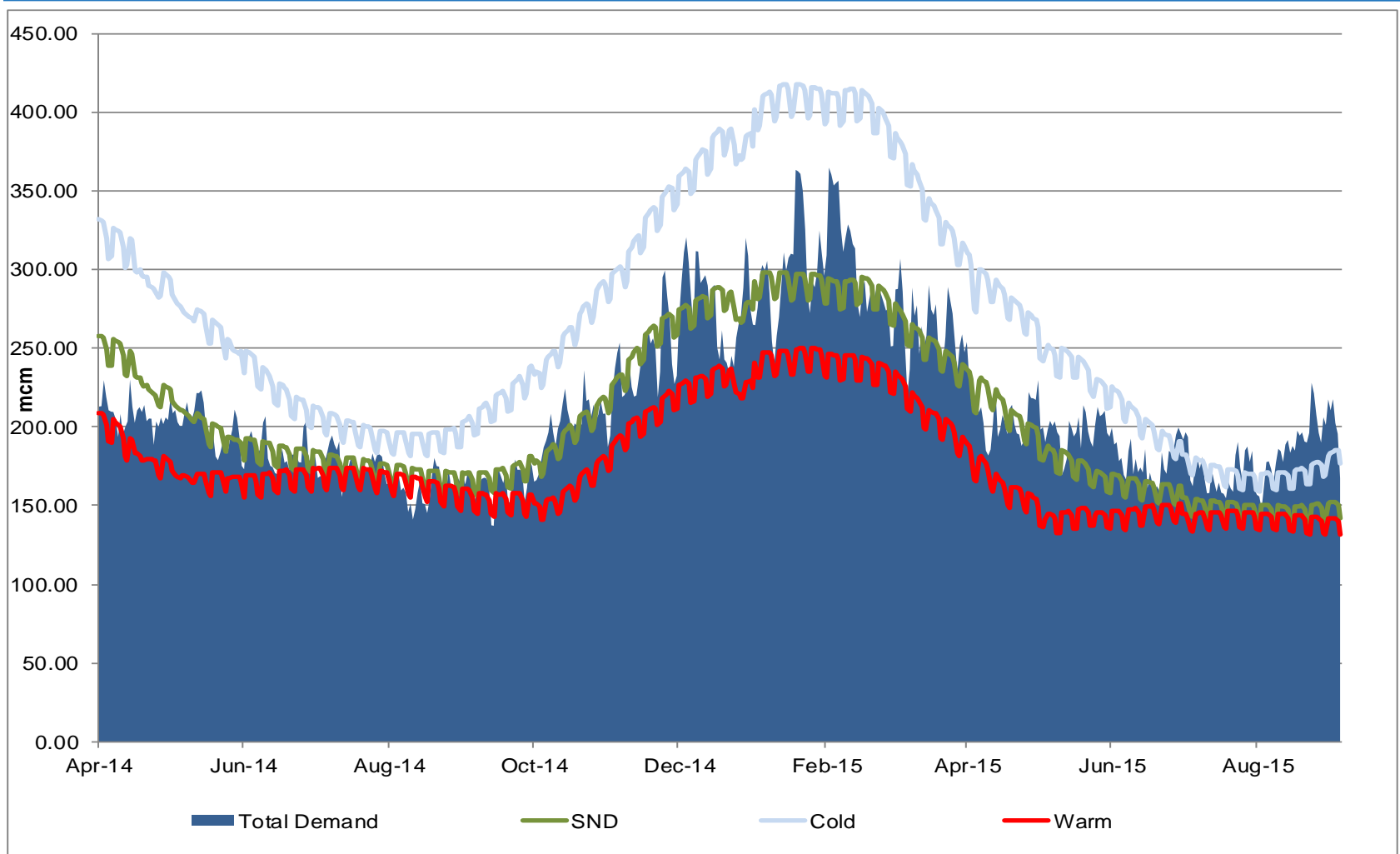
1<sup>st</sup> April 2014 to 5<sup>th</sup> September 2015





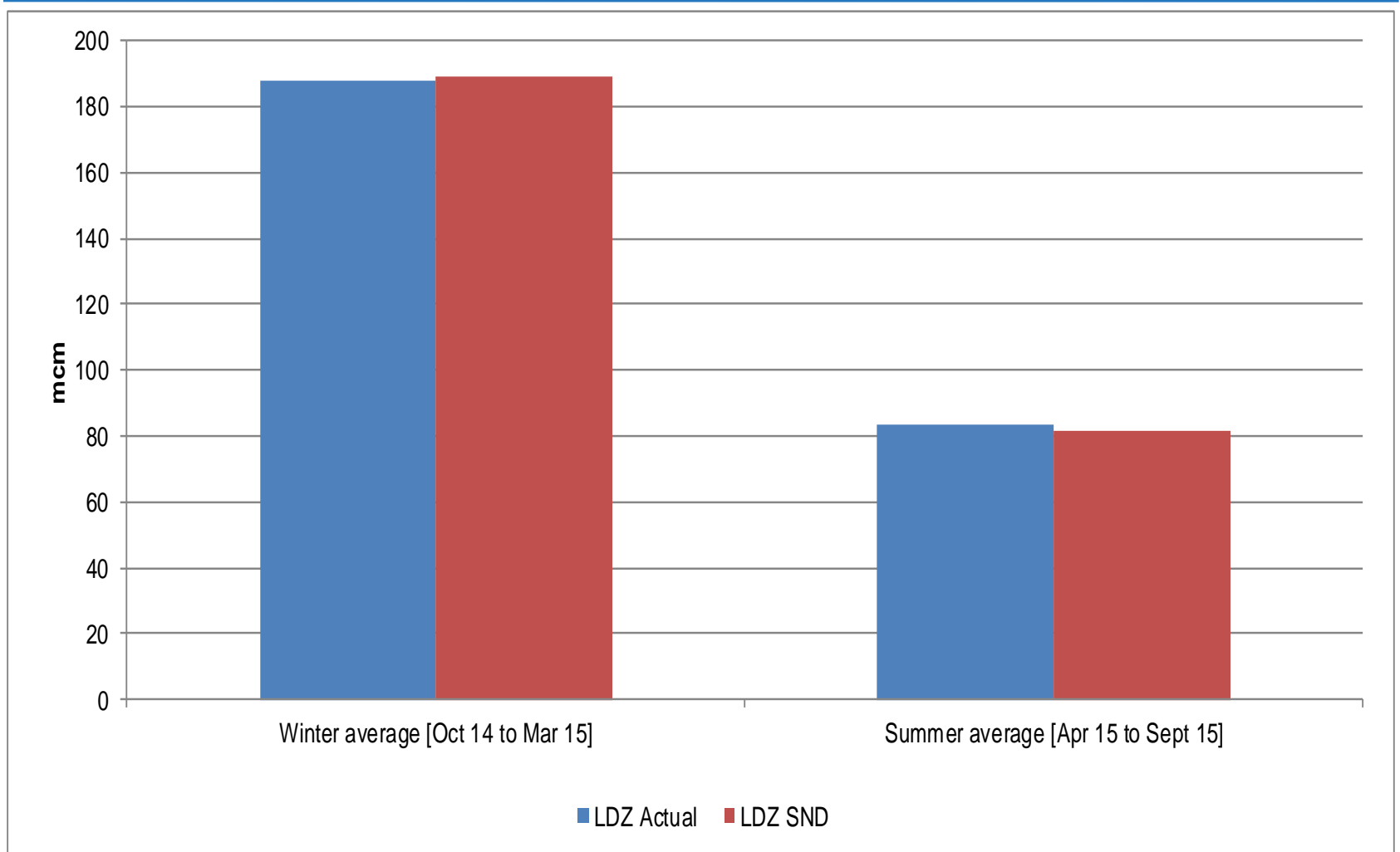
# Gas Demand Vs SND / Cold / Warm

1<sup>st</sup> April 2014 to 5<sup>th</sup> September 2015



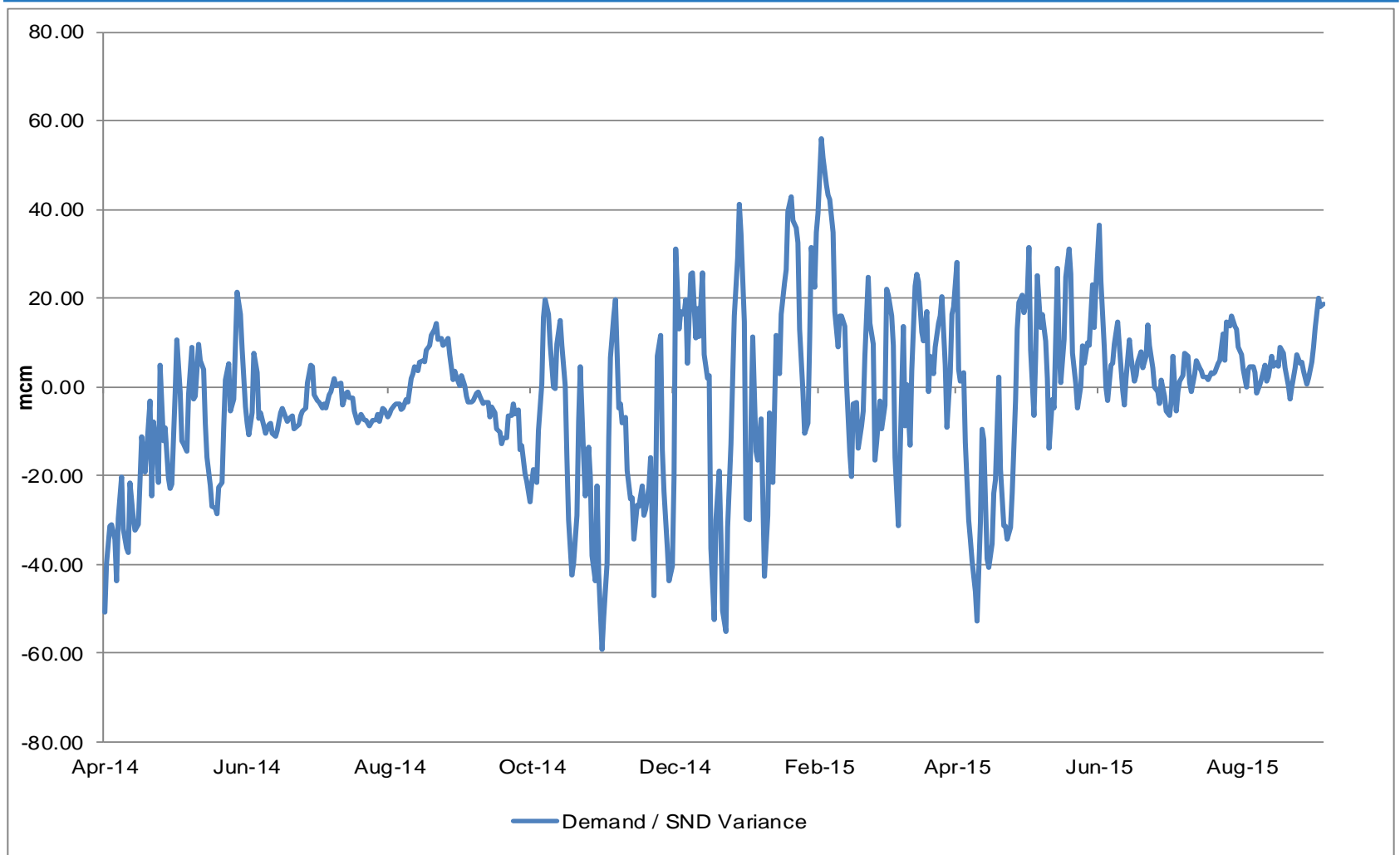
# LDZ Actual Demand Vs LDZ SND

1<sup>st</sup> October 2014 to 5<sup>th</sup> September 2015



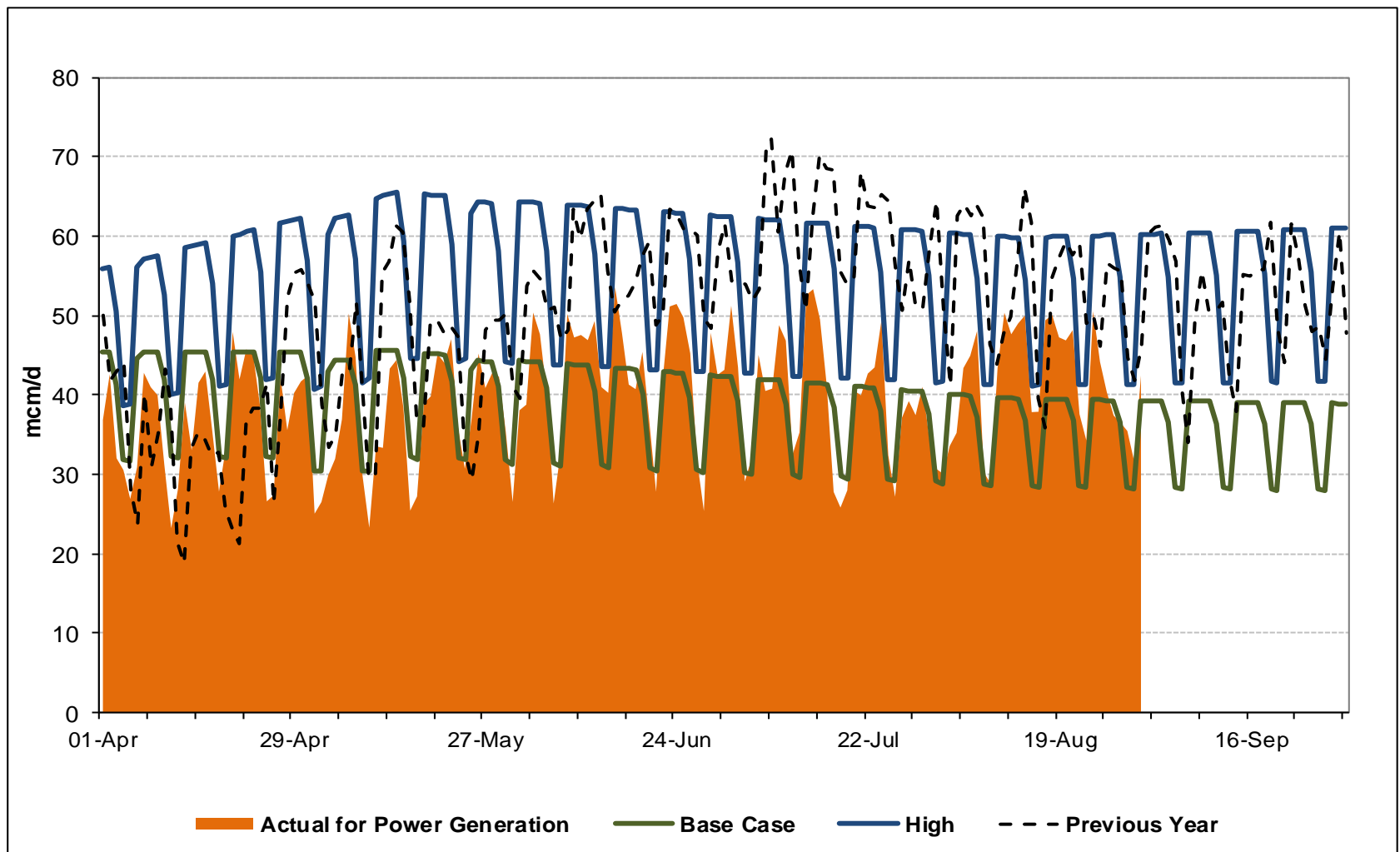
# LDZ Demand / LDZ SND Variance

1st April 2014 to 5th September 2015



# Gas Consumption for Power Generation

1<sup>st</sup> October 2014 to 31<sup>st</sup> August 2015

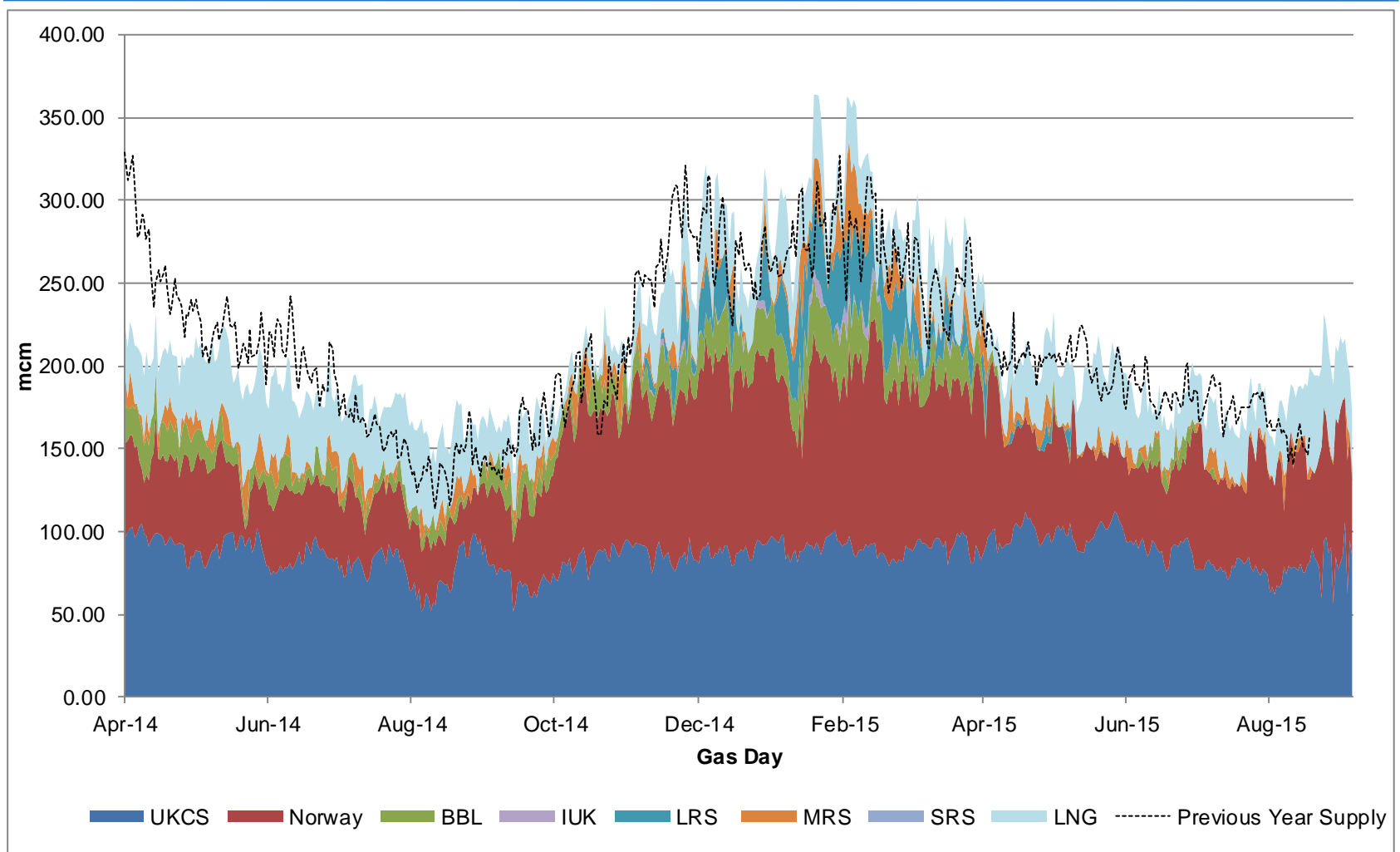


# Supplies



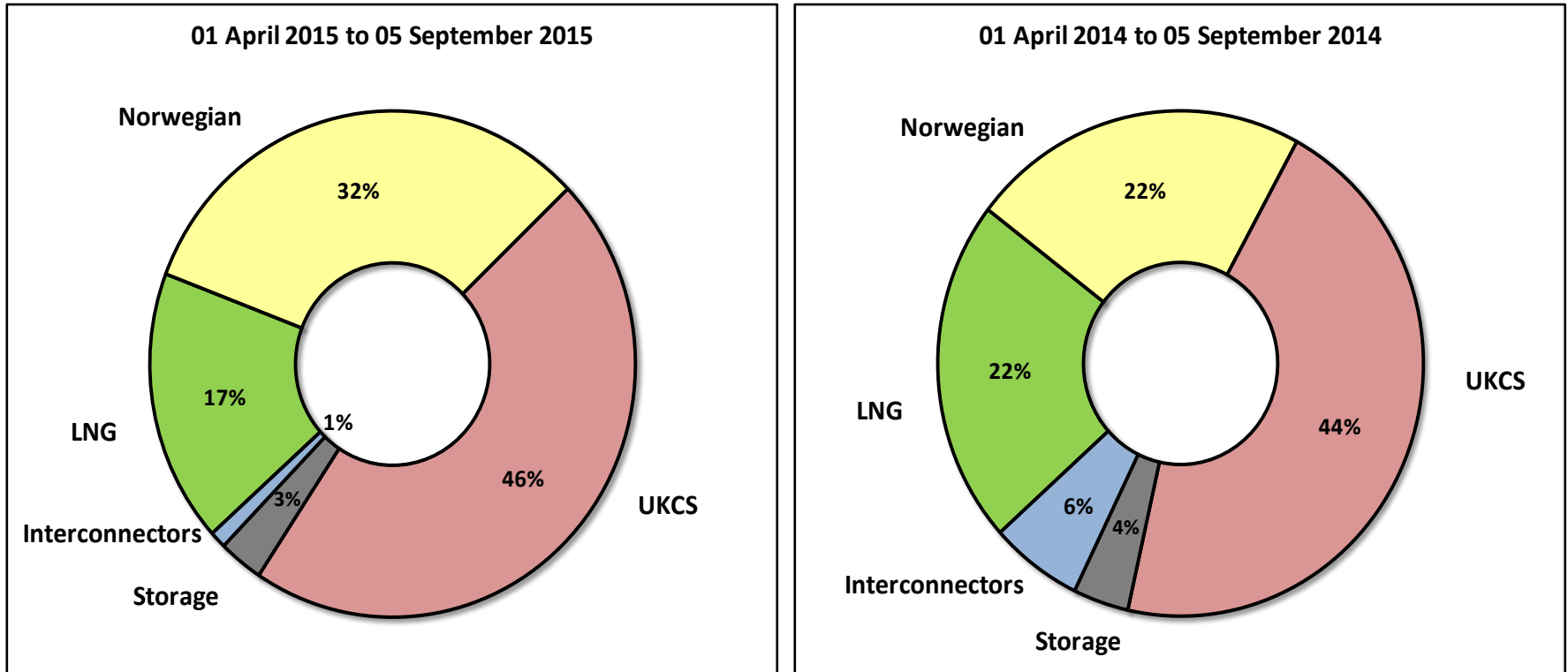
# Gas Supply Breakdown

1<sup>st</sup> April 2014 to 5<sup>th</sup> September 2015 vs Previous Year



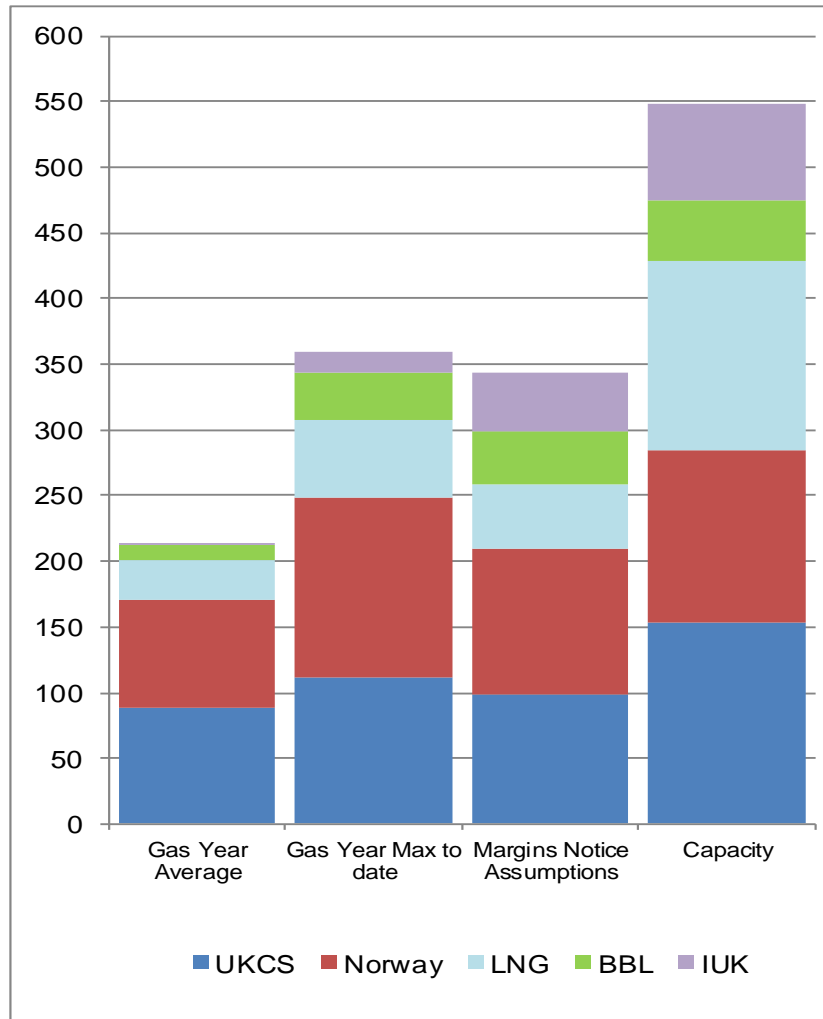
# Gas Supply Breakdown

1<sup>st</sup> October 2014 to 5<sup>th</sup> September 2015 vs Previous Year



# NSS [Non-Storage Supply]

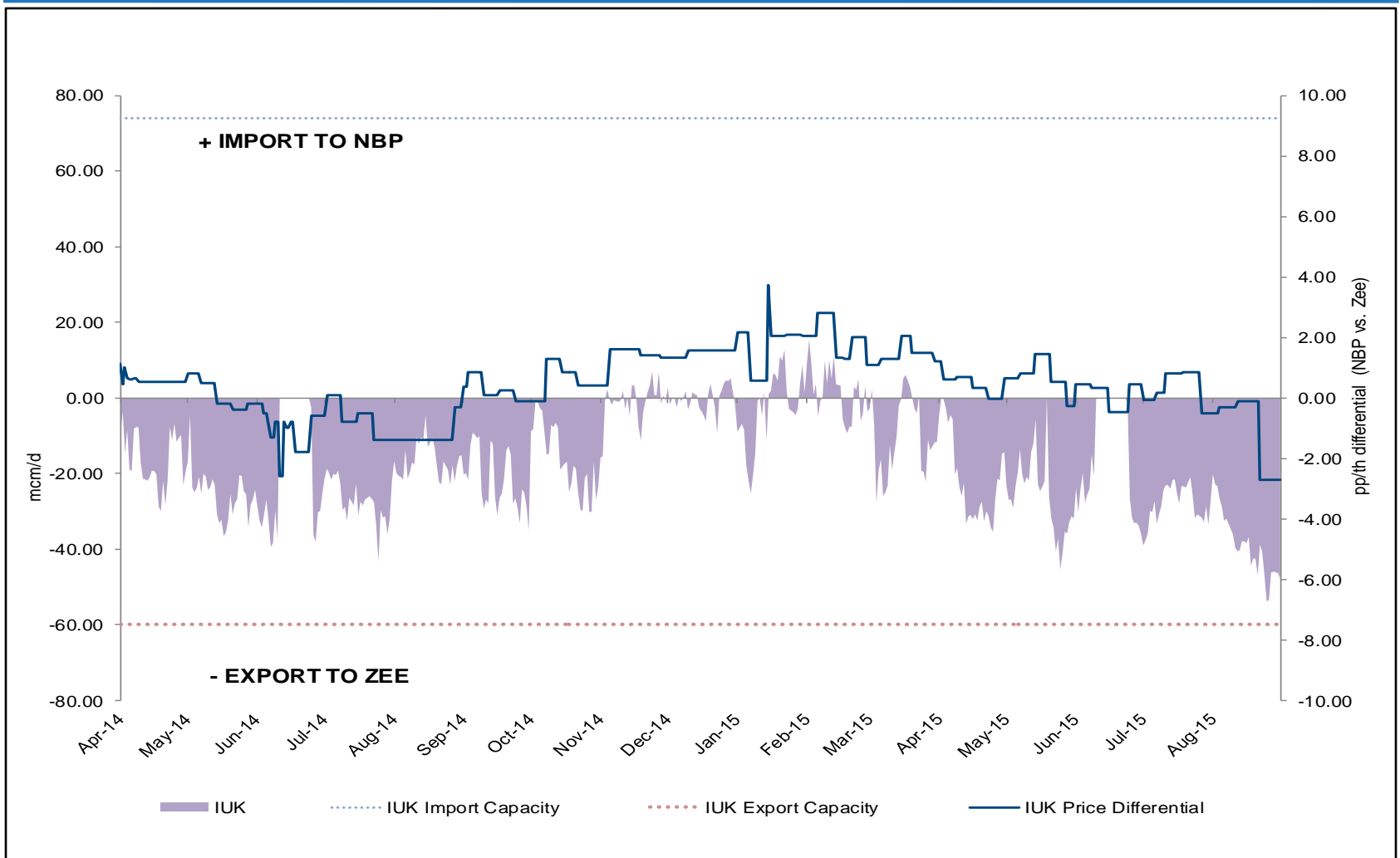
1<sup>st</sup> October 2014 to 5<sup>th</sup> September 2015





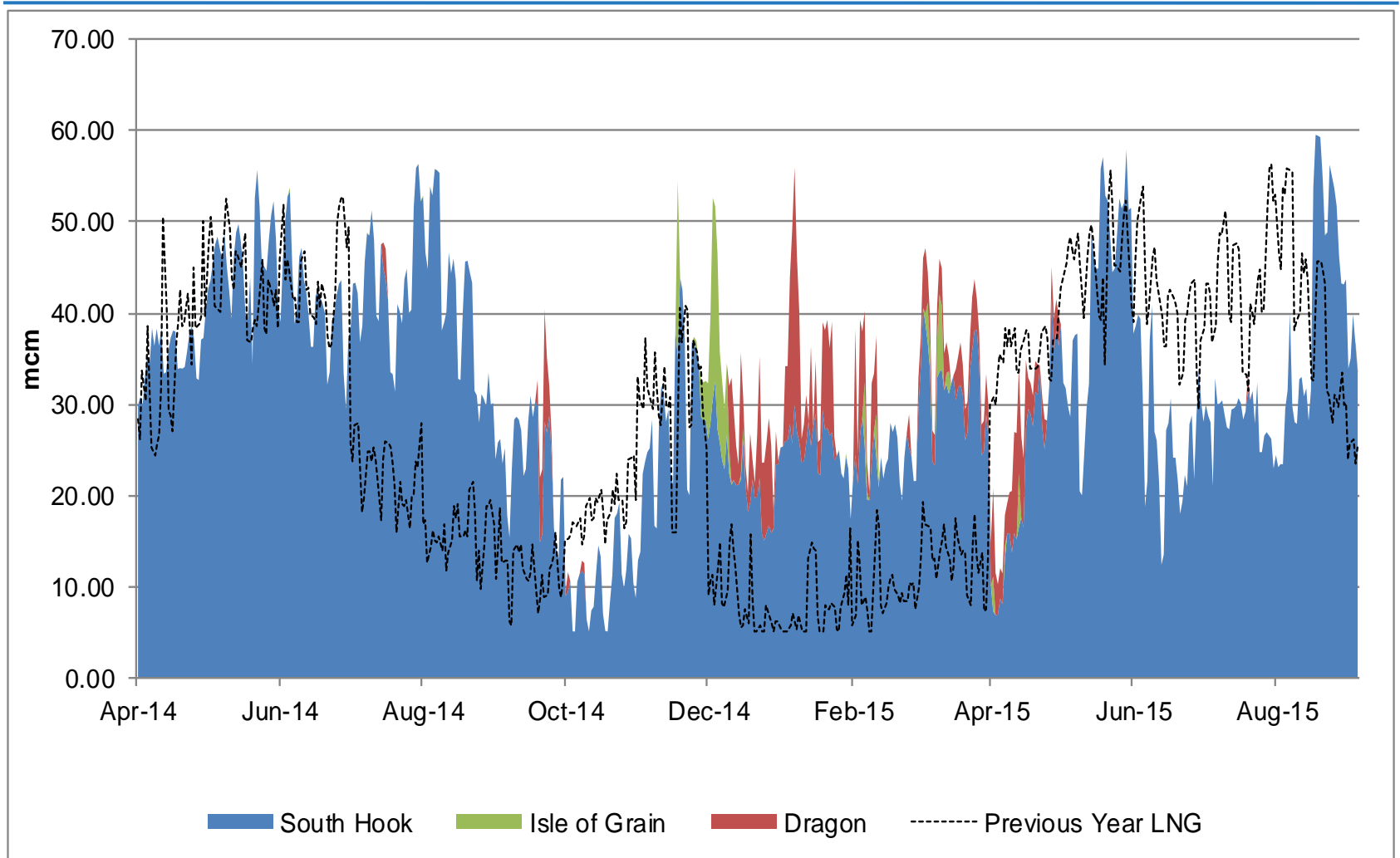
# IUK Flows vs NBP & ZEE Price Differential

1<sup>st</sup> April 2014 to 31<sup>st</sup> August 2015



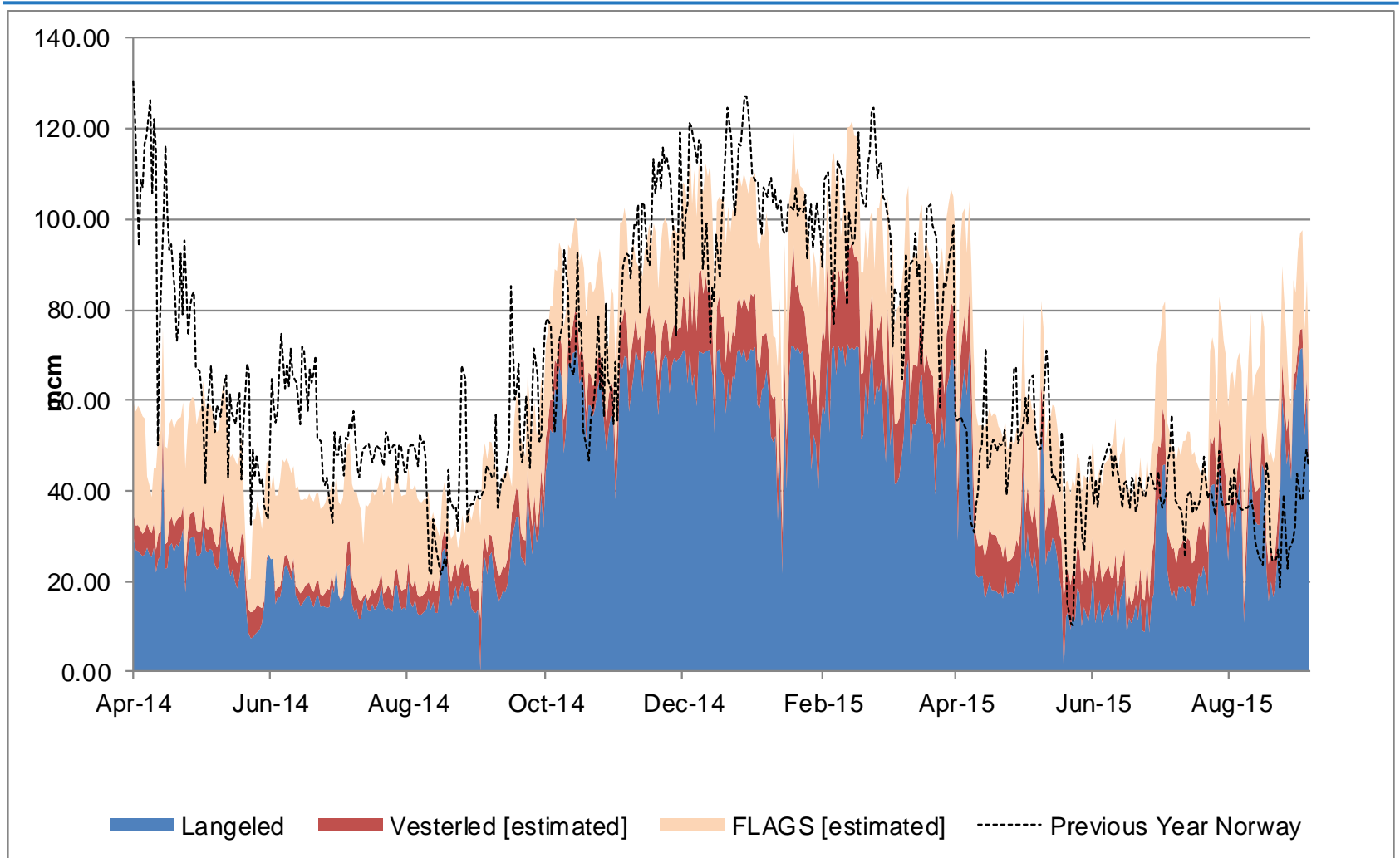
# LNG Terminal Flows

1<sup>st</sup> April 2014 to 5<sup>th</sup> September 2015



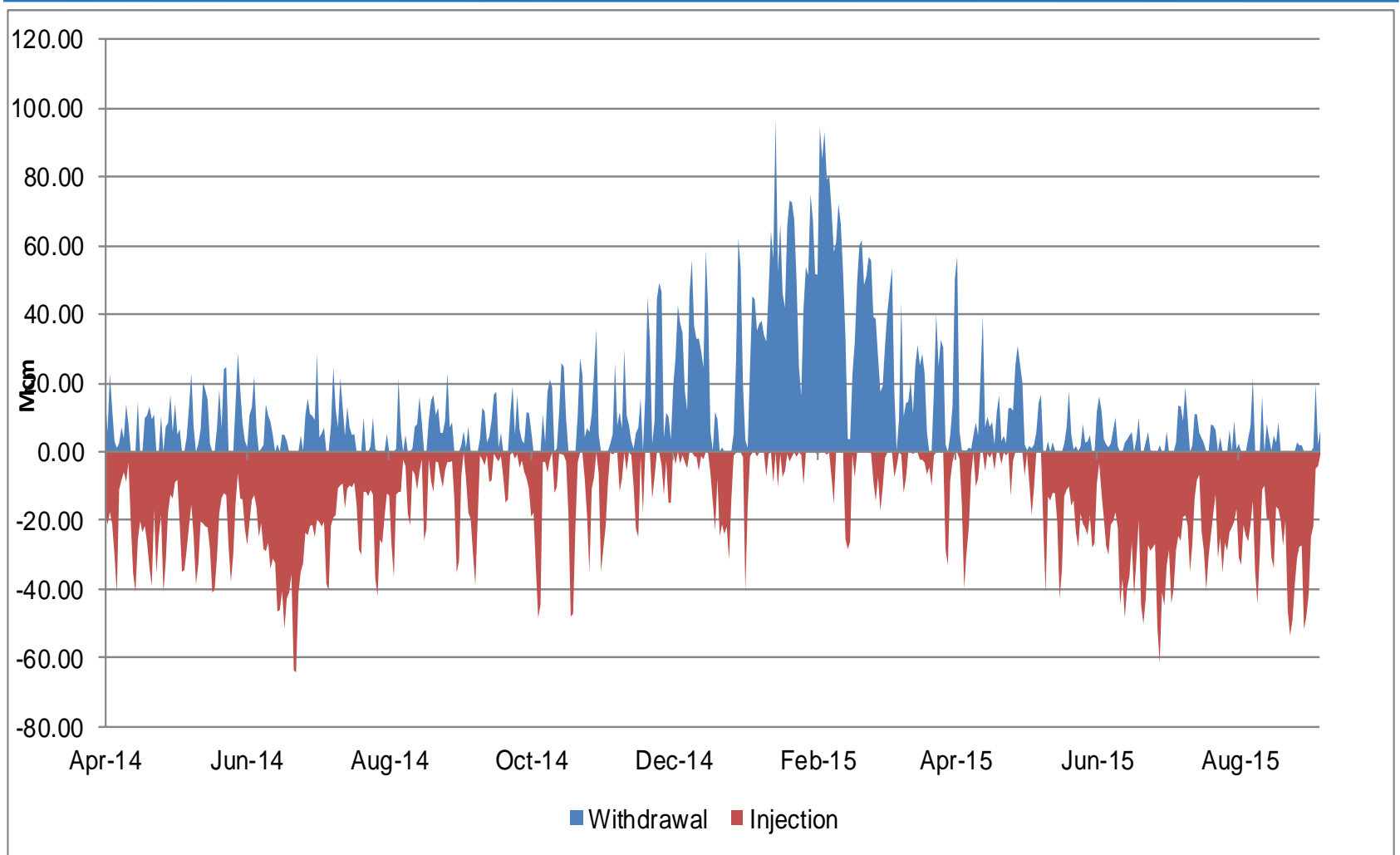
# Norway Flows

1<sup>st</sup> April 2014 to 5<sup>th</sup> September 2015



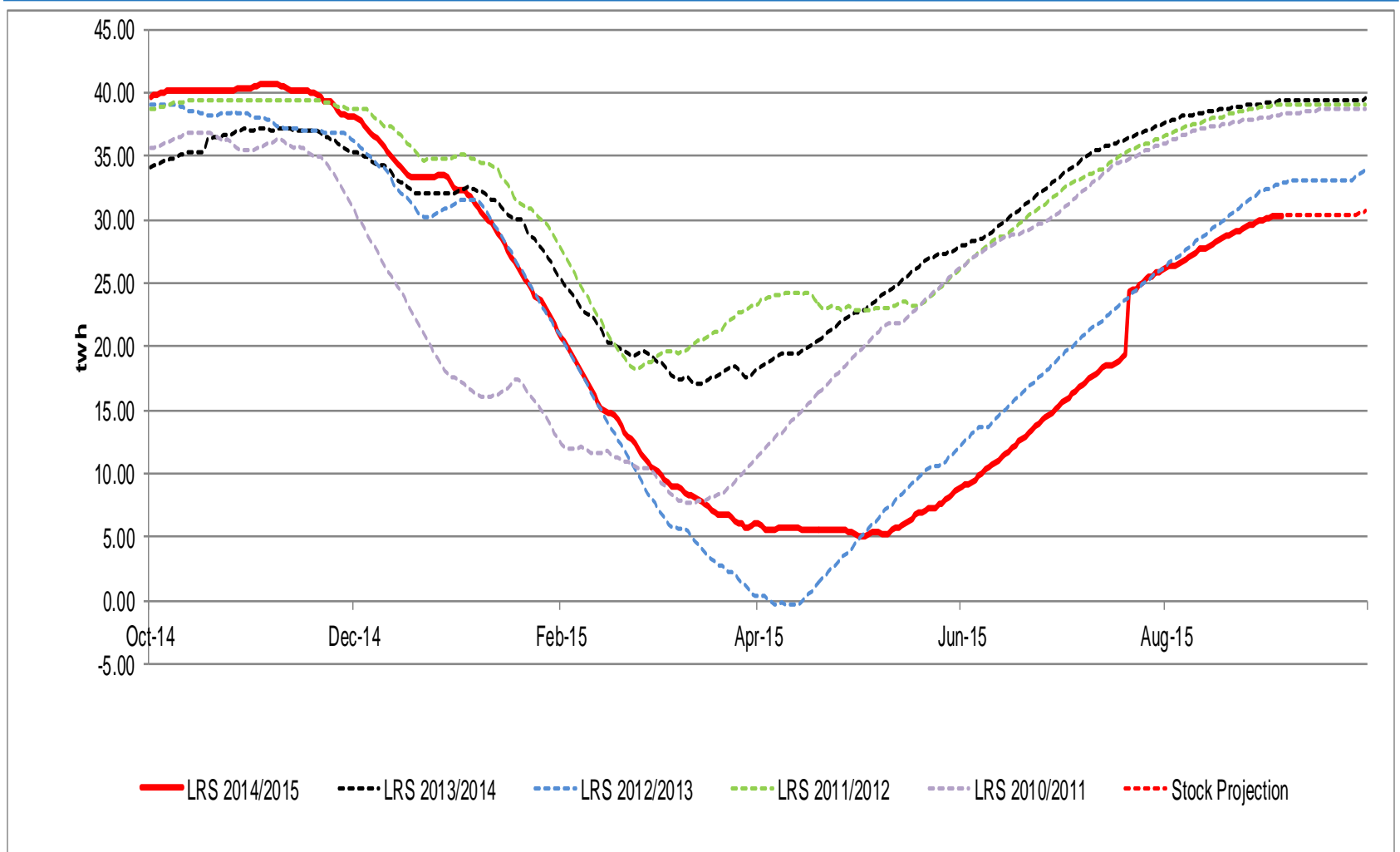
# Storage Withdrawal vs Injection

1<sup>st</sup> April 2014 to 5<sup>th</sup> September 2015



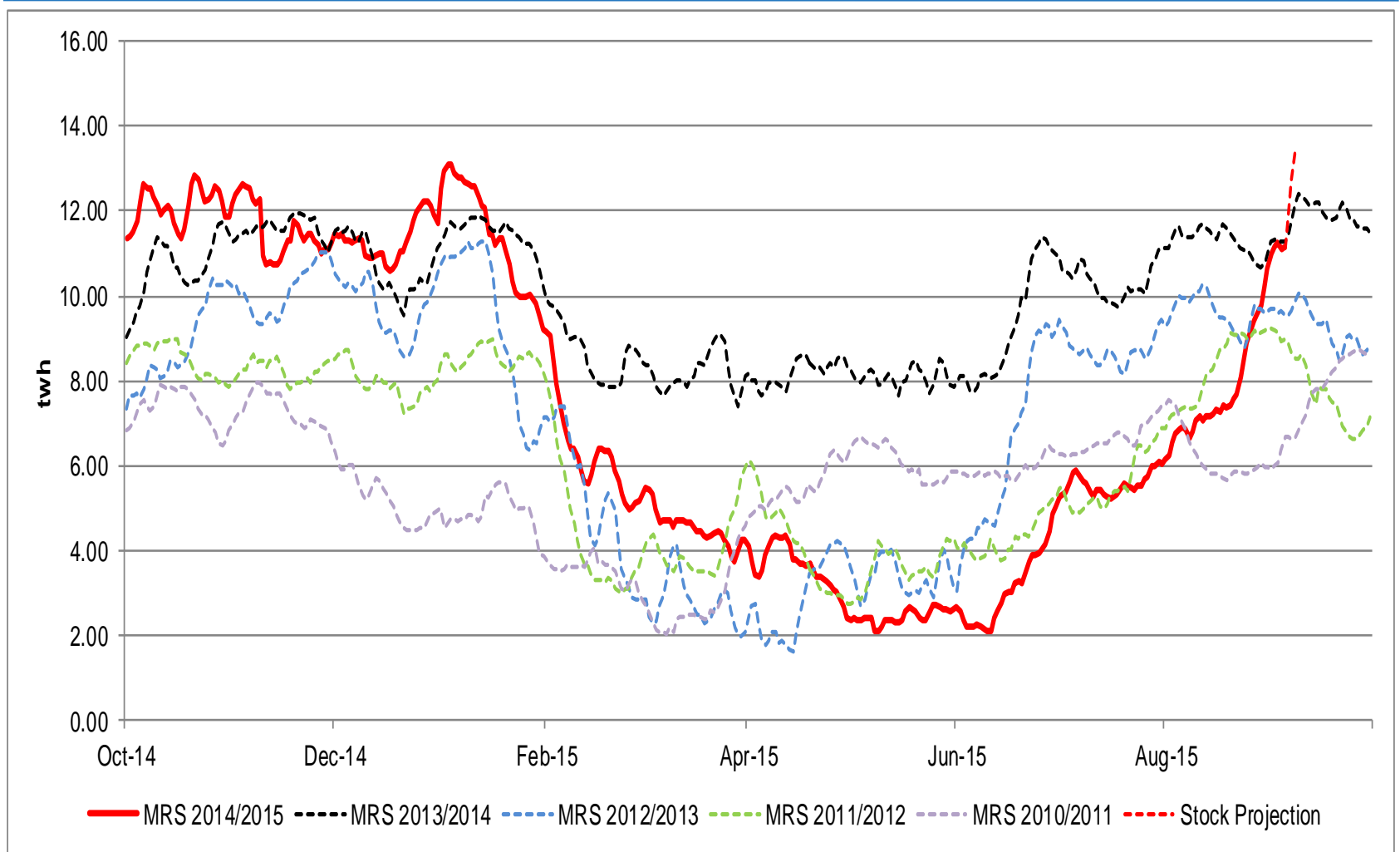
# Long Range Storage Stocks [LRS]

1<sup>st</sup> October 2014 to 5<sup>th</sup> September 2015 vs Previous Years



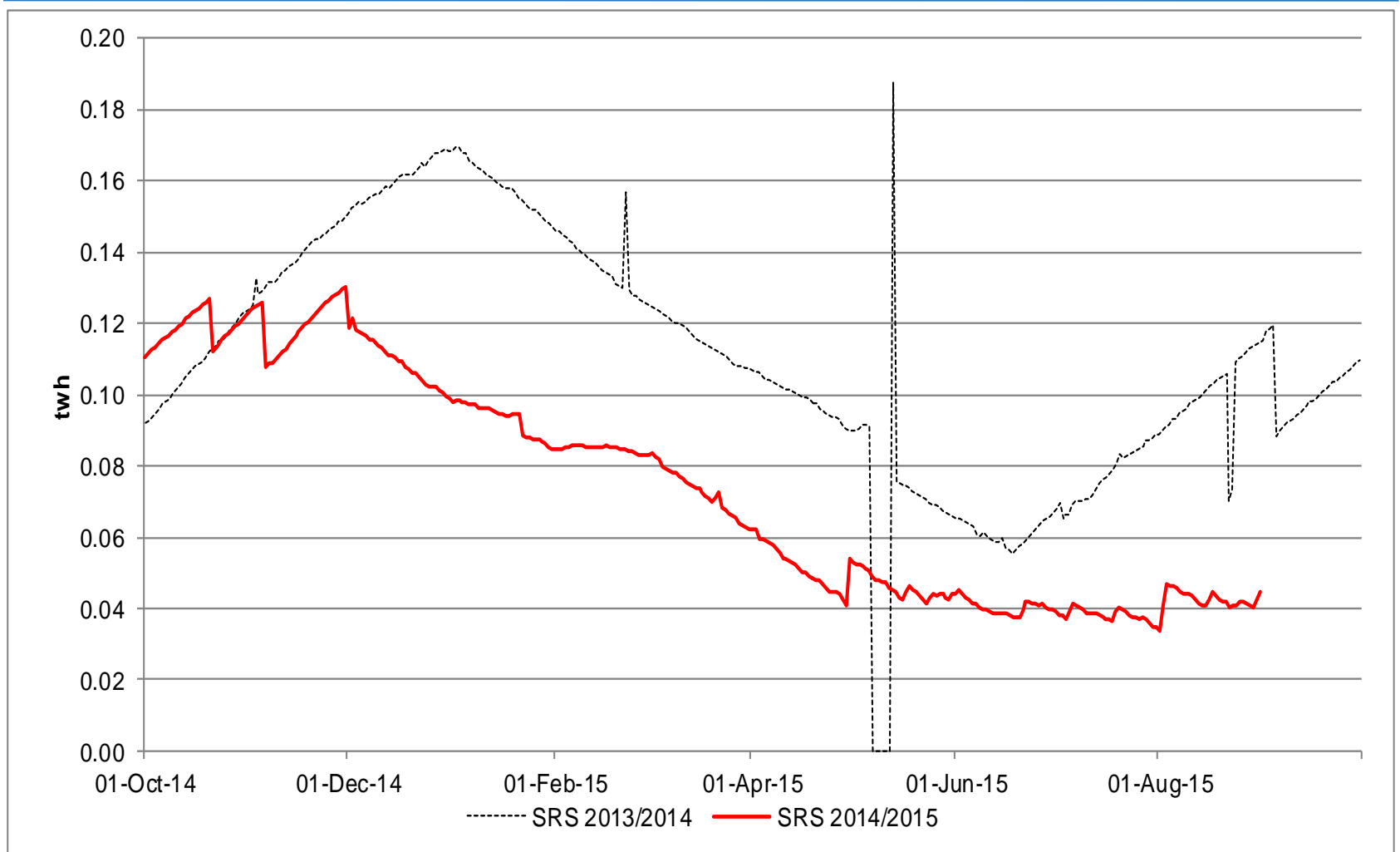
# Medium Range Storage Stocks [MRS]

1<sup>st</sup> October 2014 to 5<sup>th</sup> September 2015 Vs Previous Years



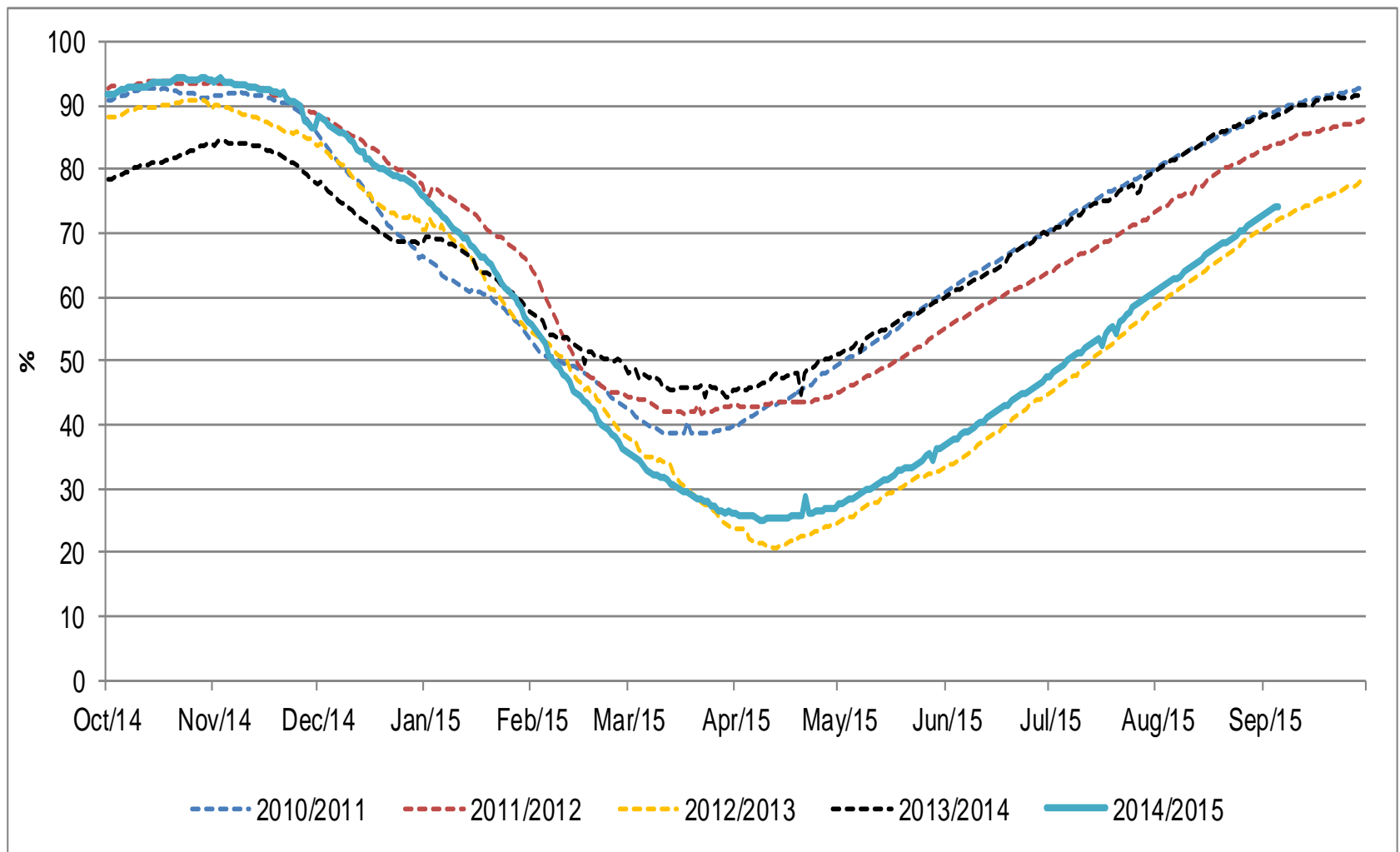
# Short Range Storage Stocks [SRS]

1<sup>st</sup> October 2014 to 5<sup>th</sup> September 2015 vs Previous Years



# Combined EU Storage Stocks [% Full]

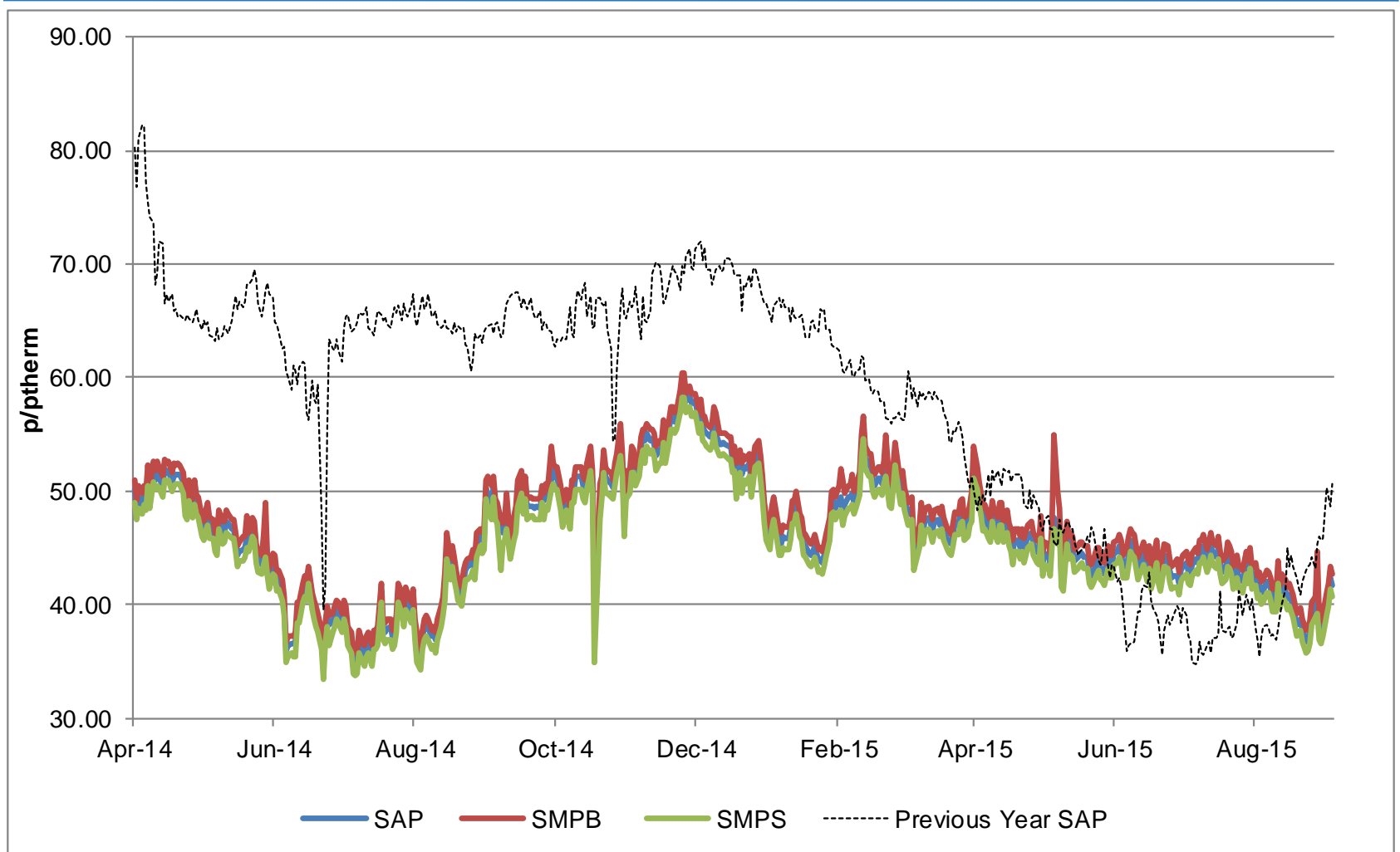
From 1<sup>st</sup> October 2014 to 5<sup>th</sup> September 2015 vs Previous Years





# UK Gas Prices

1<sup>st</sup> April 2014 to 5<sup>th</sup> September 2015 vs Previous Years



## What Operational Issues Affected Users?

---



## Transporter Actions and Neutrality

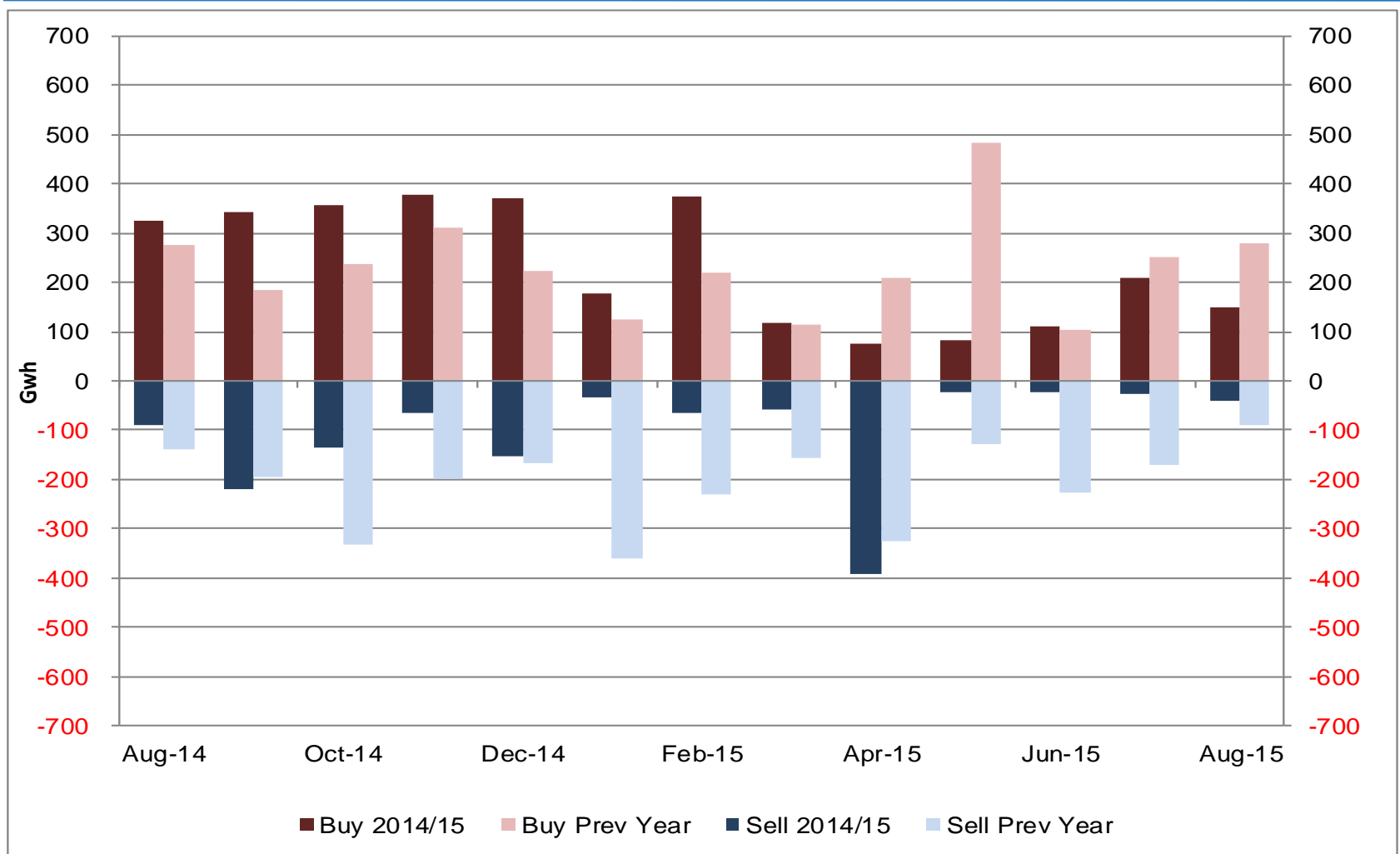


- Energy Balancing
- Capacity

# Transporter Energy Traded on the OCM

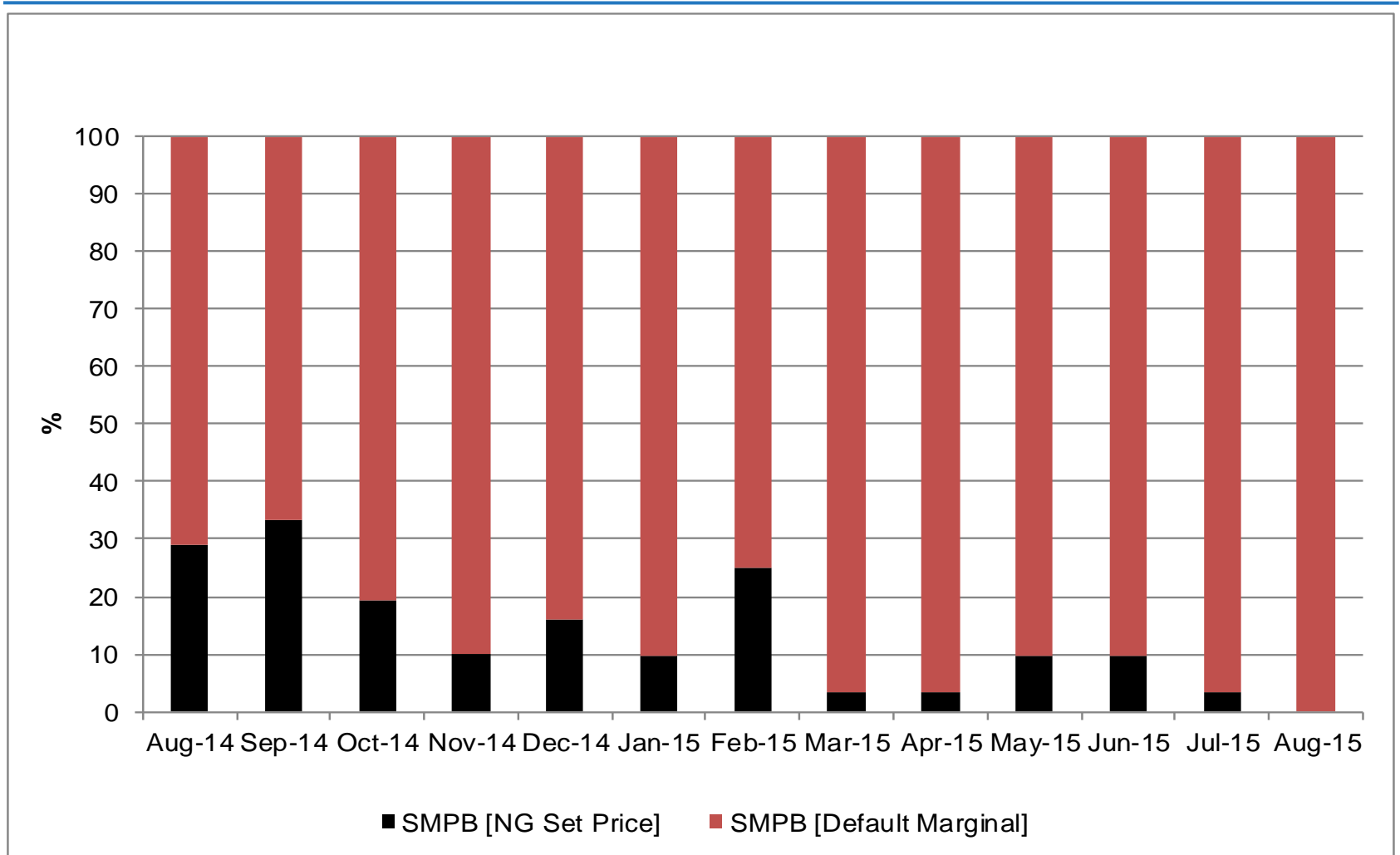
NGG Monthly Buys and Sells

Aug 2014 to Aug 2015 vs Previous Year



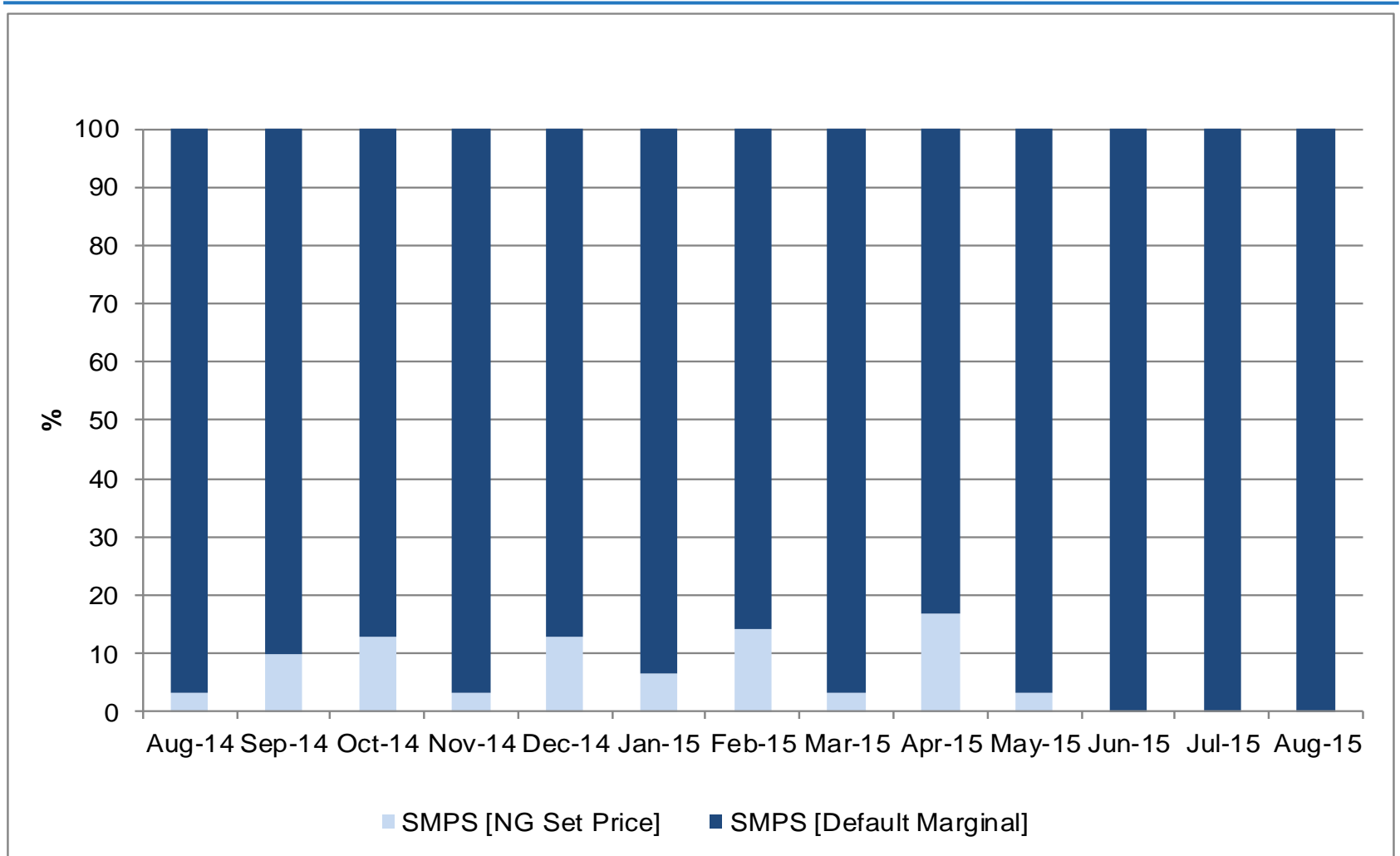
# Days of Default SMP Prices [SMPB]

From Aug 2014 to Aug 2015



# Days of Default SMP Prices [SMPS]

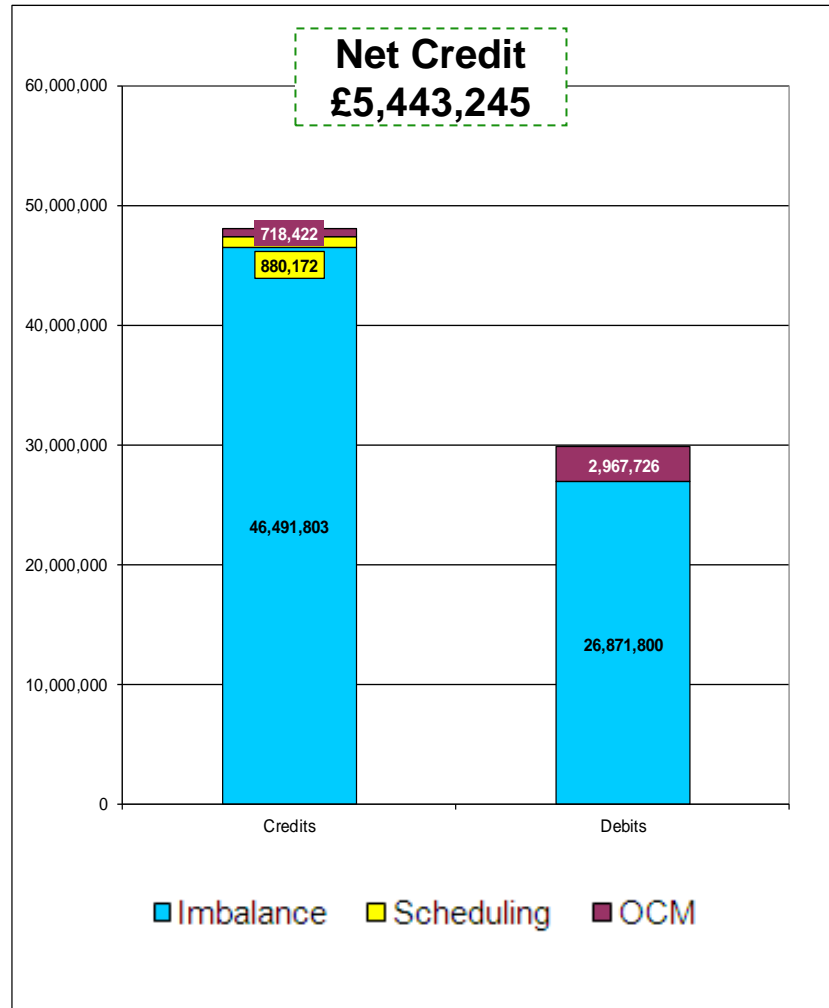
From Aug 2014 to Aug 2015



# Energy Balancing – Balancing Costs

Payments / Charges / Net Credit / Debit [Imbalance / Scheduling / OCM]

May – July 2015



# Energy Balancing – Balancing Costs

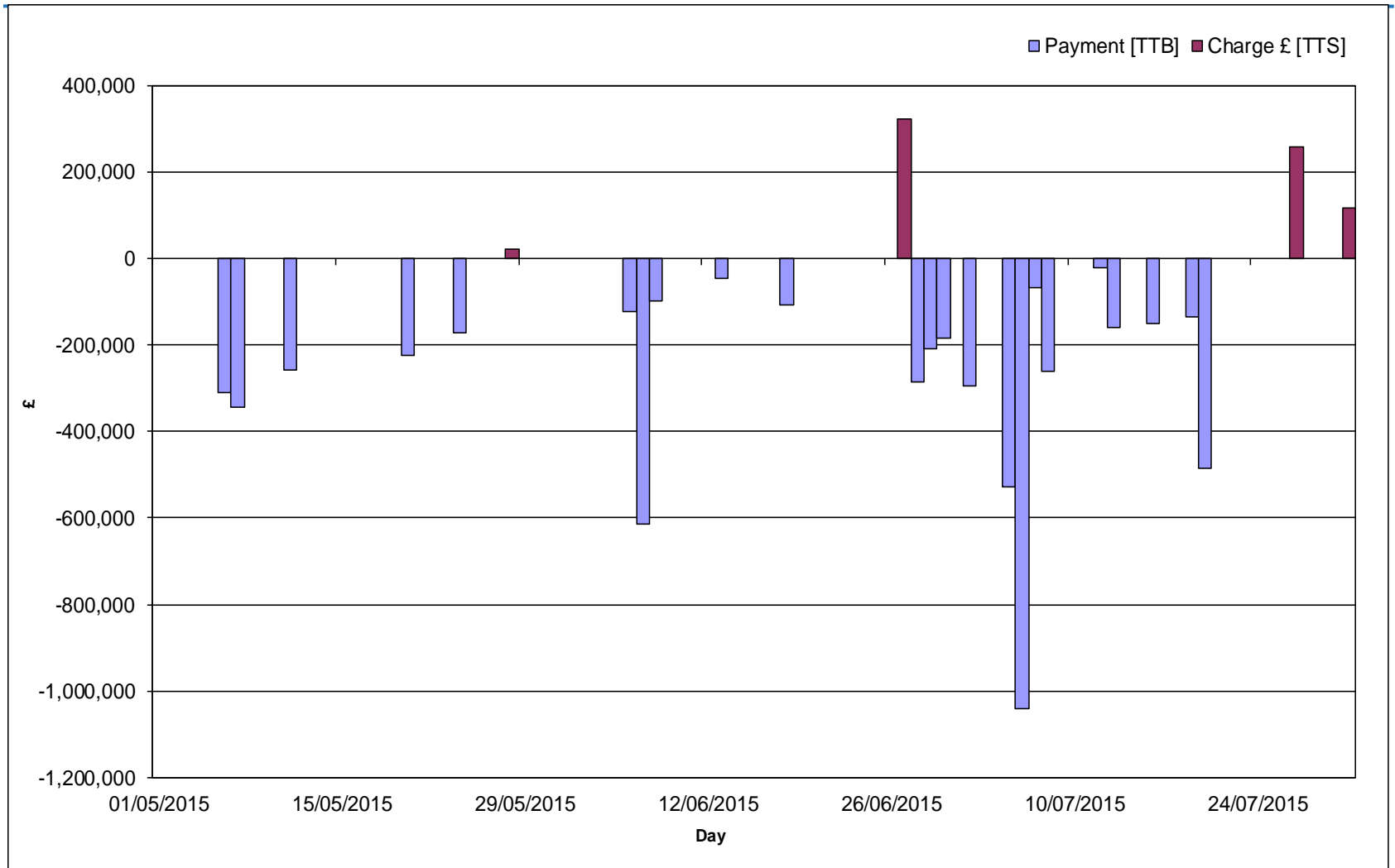
May - Jul 2015

		May-15	Jun-15	Jul-15
<b>Imbalance</b>	Payment £ [DCS]	-11,912,862	-7,165,703	-9,663,805
	Charge £ [DCT]	15,704,278	12,603,642	10,113,982
<b>Scheduling</b>	Exit Charge £ [DXS]	9,444	7,444	18,186
	Exit Charge £ [EXS]	92,781	64,352	77,701
	Entry Charge £ [ESC]	218,180	169,481	222,602
<b>OCM</b>	Payment £ [TTB]	-1,304,269	-1,663,457	-3,143,821
	Charge £ [TTS]	20,975	322,845	374,602
<b>Balancing Costs</b>		<b>2,828,528</b>	<b>4,338,604</b>	<b>-2,000,553</b>



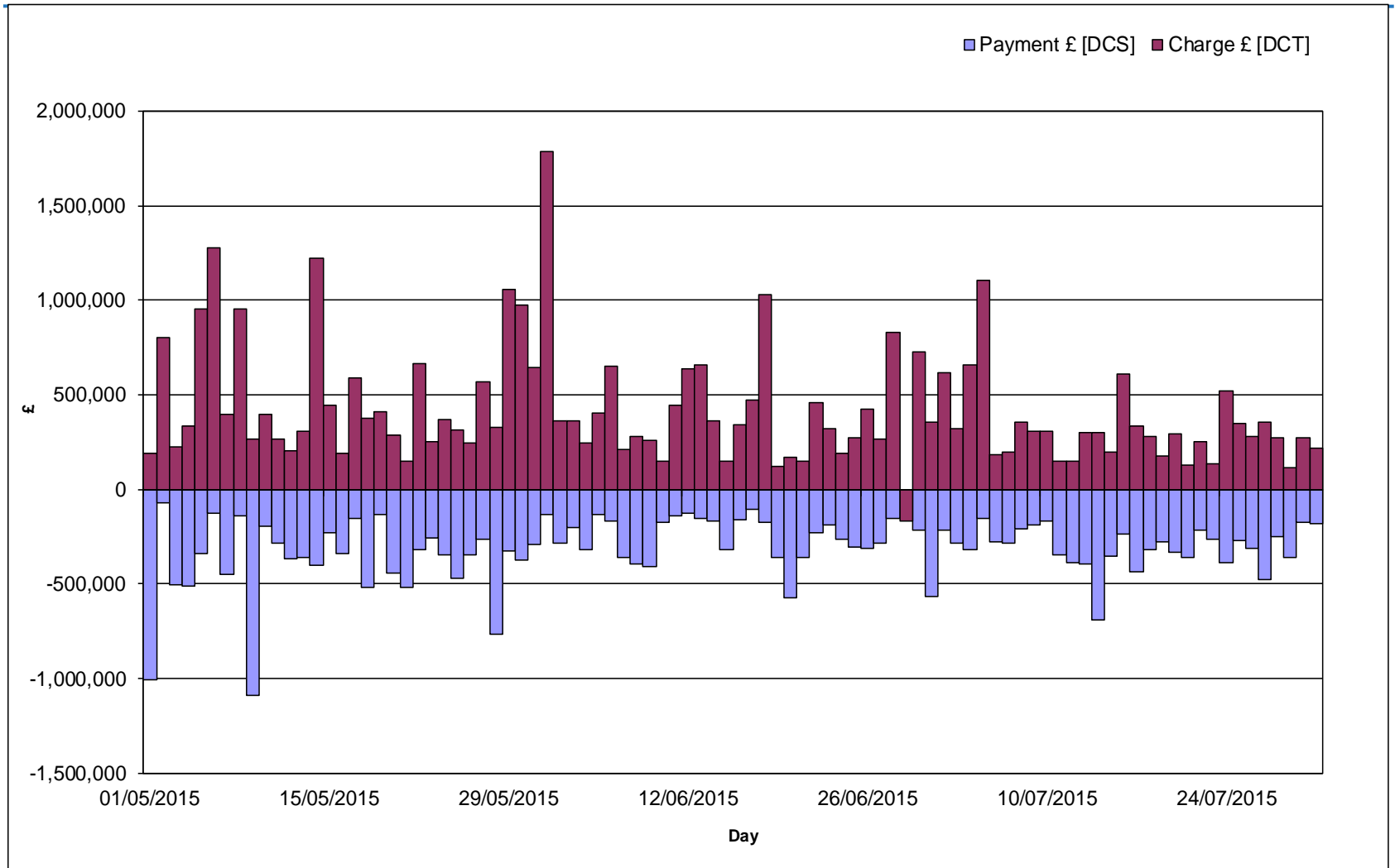
# Energy Balancing – Balancing Costs

OCM Payments / Charges  
May 2015 to July 2015



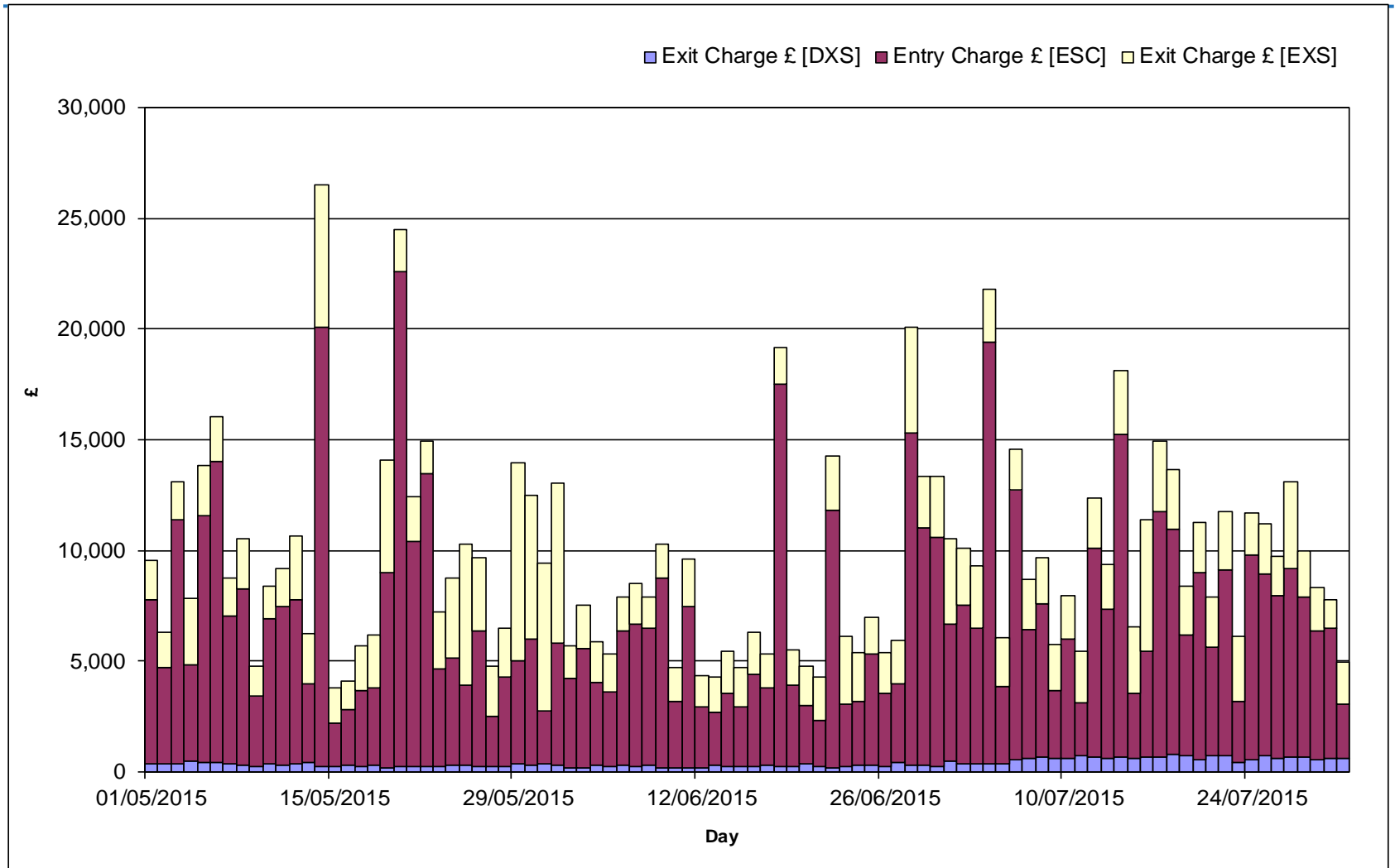
# Energy Balancing – Balancing Costs

Imbalance Payments / Charges  
May 2015 to July 2015



# Energy Balancing – Balancing Costs

Scheduling Charges  
May 2015 to Jul 2015



# Capacity Neutrality

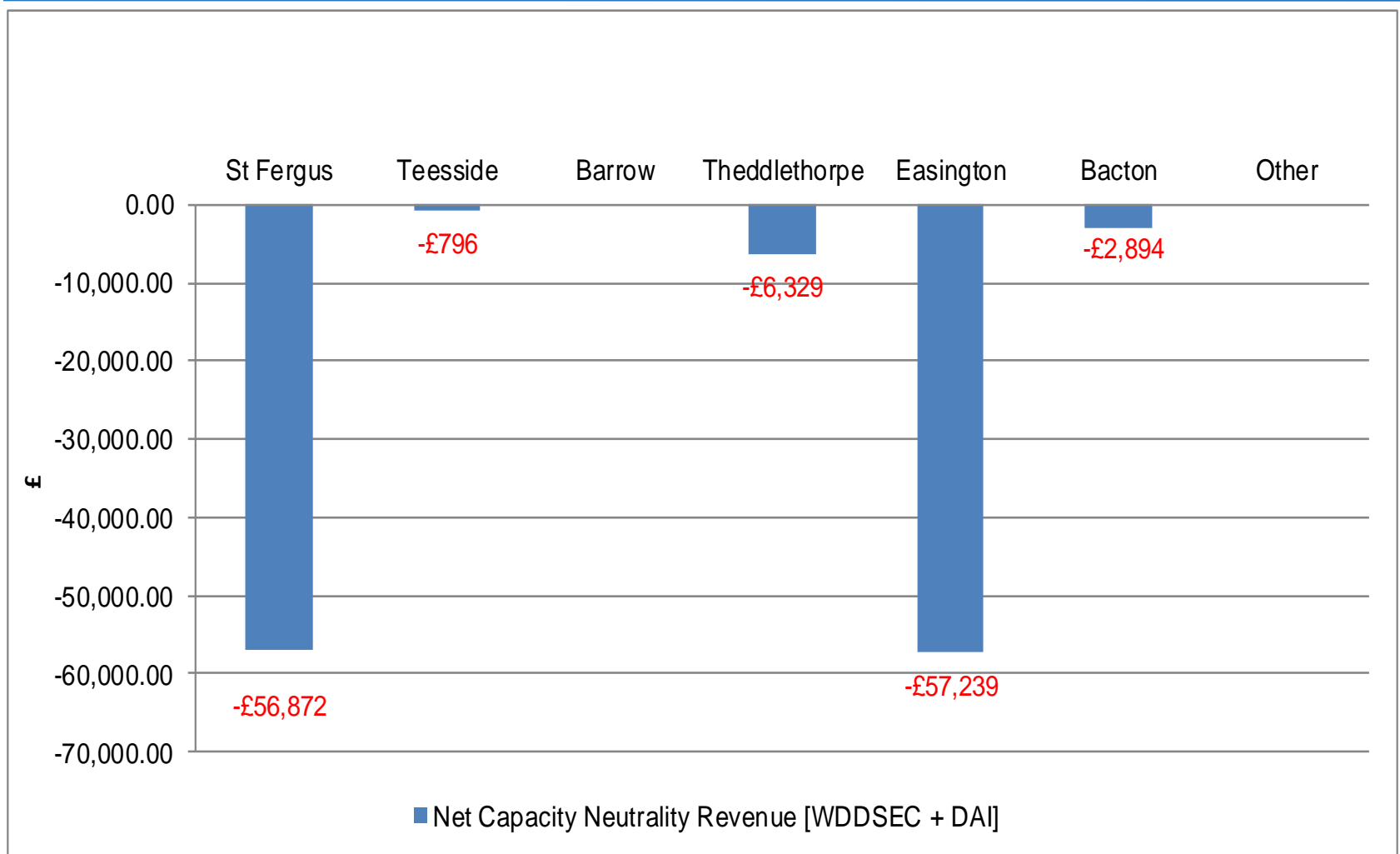
Net Cost / Revenue From 1<sup>st</sup> April 2015 to 31<sup>st</sup> August 2015

	Revenue/Costs
WDDSEC/DAI Entry Capacity Revenue	-£122,922
Total Entry Constraint Management Operational Costs	£0
Entry Capacity Overrun Revenue	-£313,054 [Apr - Jul 2015, Aug 2015 data not yet available]
Non-Obligated Sales Revenue (Entry only)	-£8
Revenue from Locational Sells and PRI Charges	£0
<b>Net Revenue</b>	<b>-£435,984</b>

# Net Capacity Neutrality Revenue

[Daily Obligated Entry Capacity and Interruptible Entry Capacity: WDDSEC + DAI]

From 1<sup>st</sup> April 2015 to 31<sup>st</sup> August 2015



# Capacity Neutrality

Revenues from Entry Cap Overruns and Non-Obligated Sales,  
and Locational Sells and PRI Charges.

Totals From 1<sup>st</sup> April 2015 to 31<sup>st</sup> July 2015

Month	Entry Cap Overrun Revenue	Non-obligated sales revenue (entry)
Apr-15	-£212,709	£0
May-15	-£74,181	£0
Jun-15	-£18,968	£0
Jul-15	-£7,196	-£8
Aug-15		
Sep-15		
Oct-15		
Nov-15		
Dec-15		
Jan-16		
Feb-16		
Mar-16		
<b>Total</b>	<b>-£313,054 (FY15-16)</b>	<b>-£8 (FY15-16)</b>

Month	Locational Sells and PRI charges revenue
Apr-15	£0
May-15	£0
Jun-15	£0
Jul-15	£0
Aug-15	
Sep-15	
Oct-15	
Nov-15	
Dec-15	
Jan-16	
Feb-16	
Mar-16	
<b>Total</b>	<b>£0 (FY15/16)</b>