







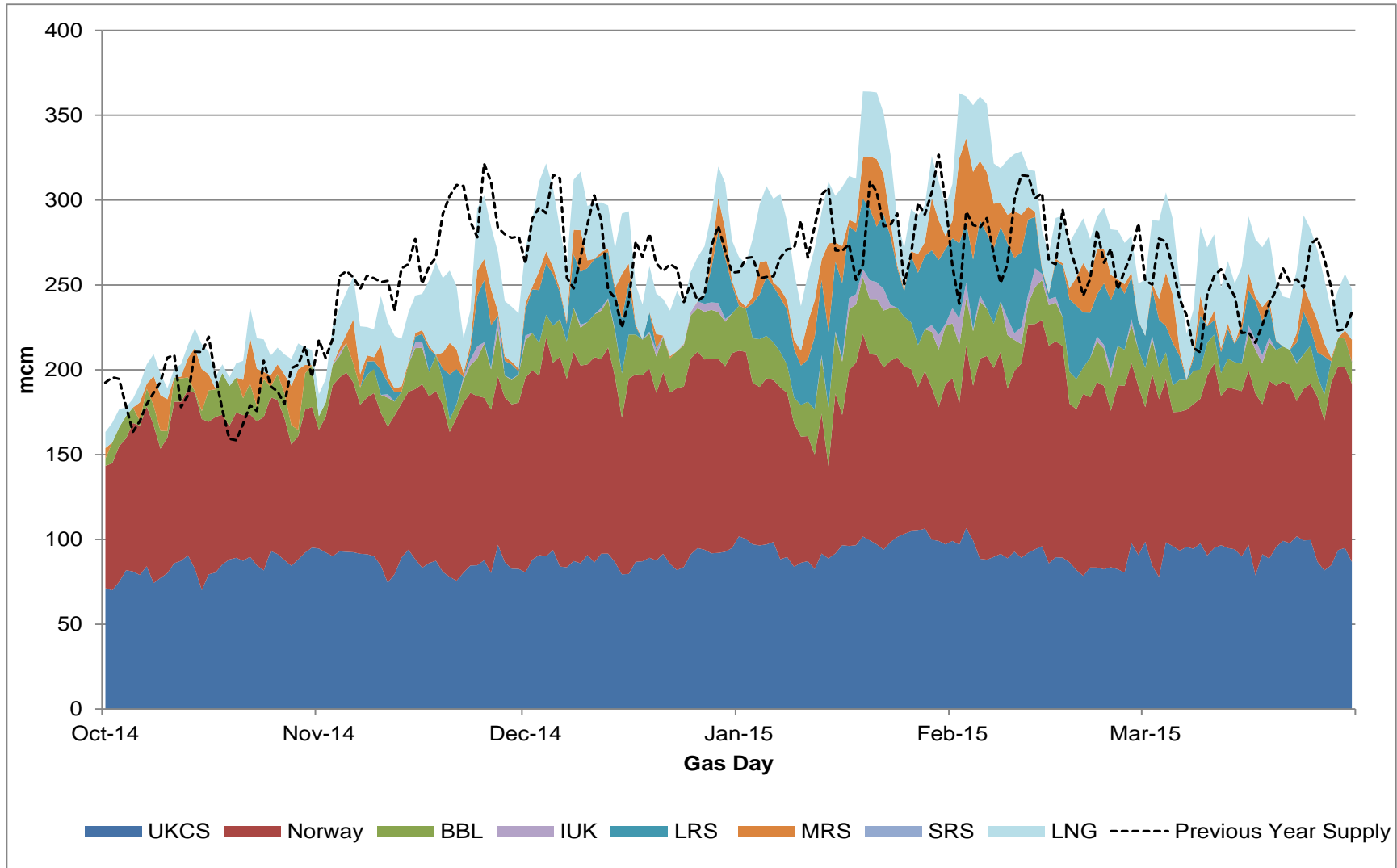
Supply [1st October 2014 to 31st March 2015]

NTS Supply 14/15 (mscm/d)

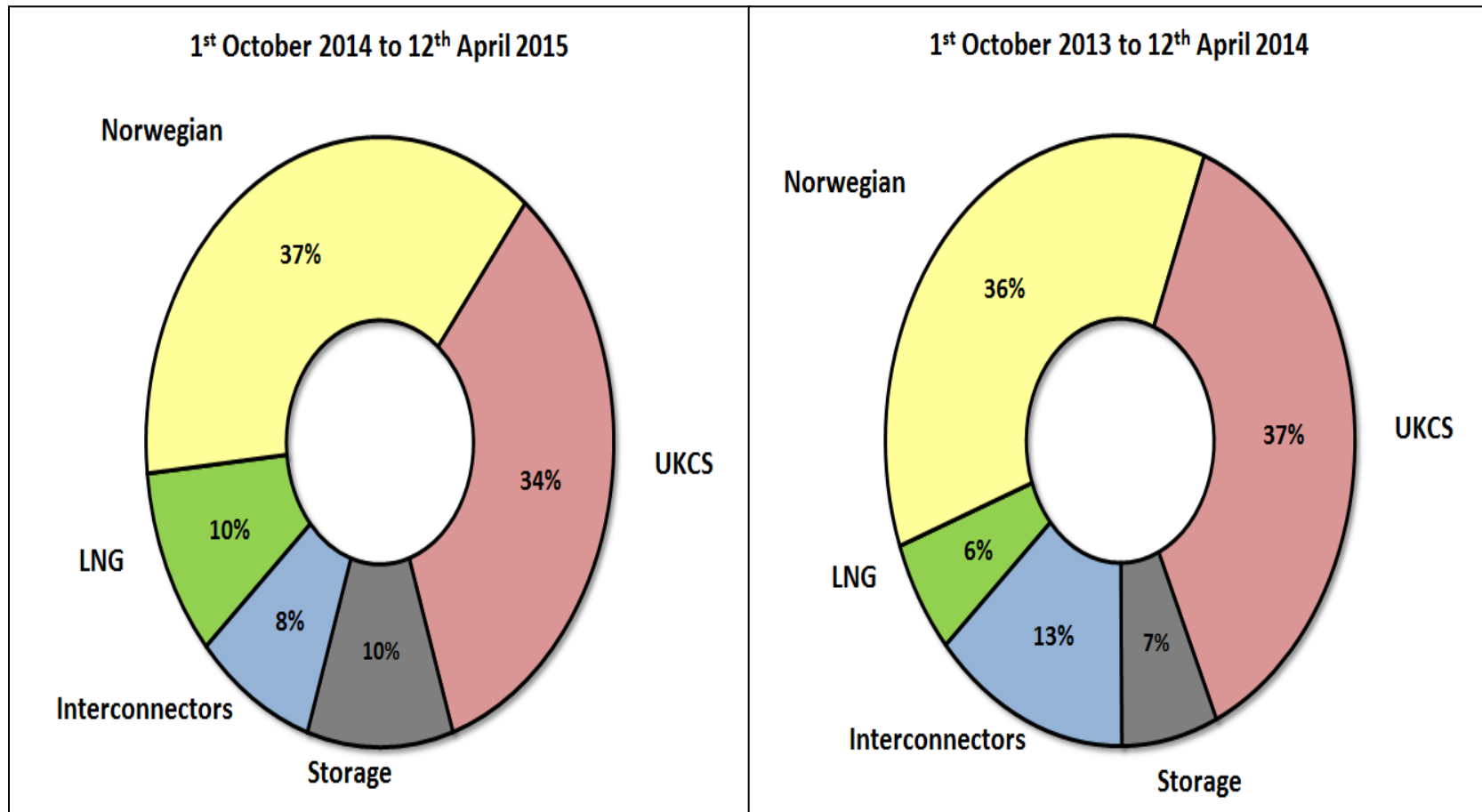
Entry	Min	Max	Ave	Winter Outlook Range [14/15]	Winter Actual Range [13/14]	Comments
 UKCS	70.0	106.6	89.5	76-109	65-106	<ul style="list-style-type: none"> UKCS supplies have proved reliable and stable throughout the winter. Whilst there were regular supply interruptions experienced from Norway during the winter periods., these shortfalls were adequately covered by MRS & LNG. LNG comprised 10% of the supply during this winter compared to 6% the previous winter. Winter 2014_15 LNG supply breakdown [South Hook 85%, Dragon 11%, Grain 4%].
 NORWAY est*	54.4	134.6	98.7	60-130	47-127	
 INTERCONNECTORS BBL	0.9	35.9	20.3	10 - 45	3 - 45	
 INTERCONNECTORS IUK	0.0	15.3	1.4	0 - 74	0- 27	
 LNG	5.1	56.0	27.6	8 -130	8 -44	
 STORAGE WITHDRAWAL	0.0	96.8	27.7	0 - 129	0 - 86	
Entry	Min	Max	Ave	Winter Outlook Range [14/15]		
Actual Supply	163.3	364.1	265.2	154 - 617		
Actual Supply Exc. Storage	157.1	298.2	237.5	NSS 344.0 [Average Cold] 488 [Max NSS]		

Gas Supply Breakdown

1st October 2014 to 31st March 2015 vs Previous Year









Gas Supply Breakdown



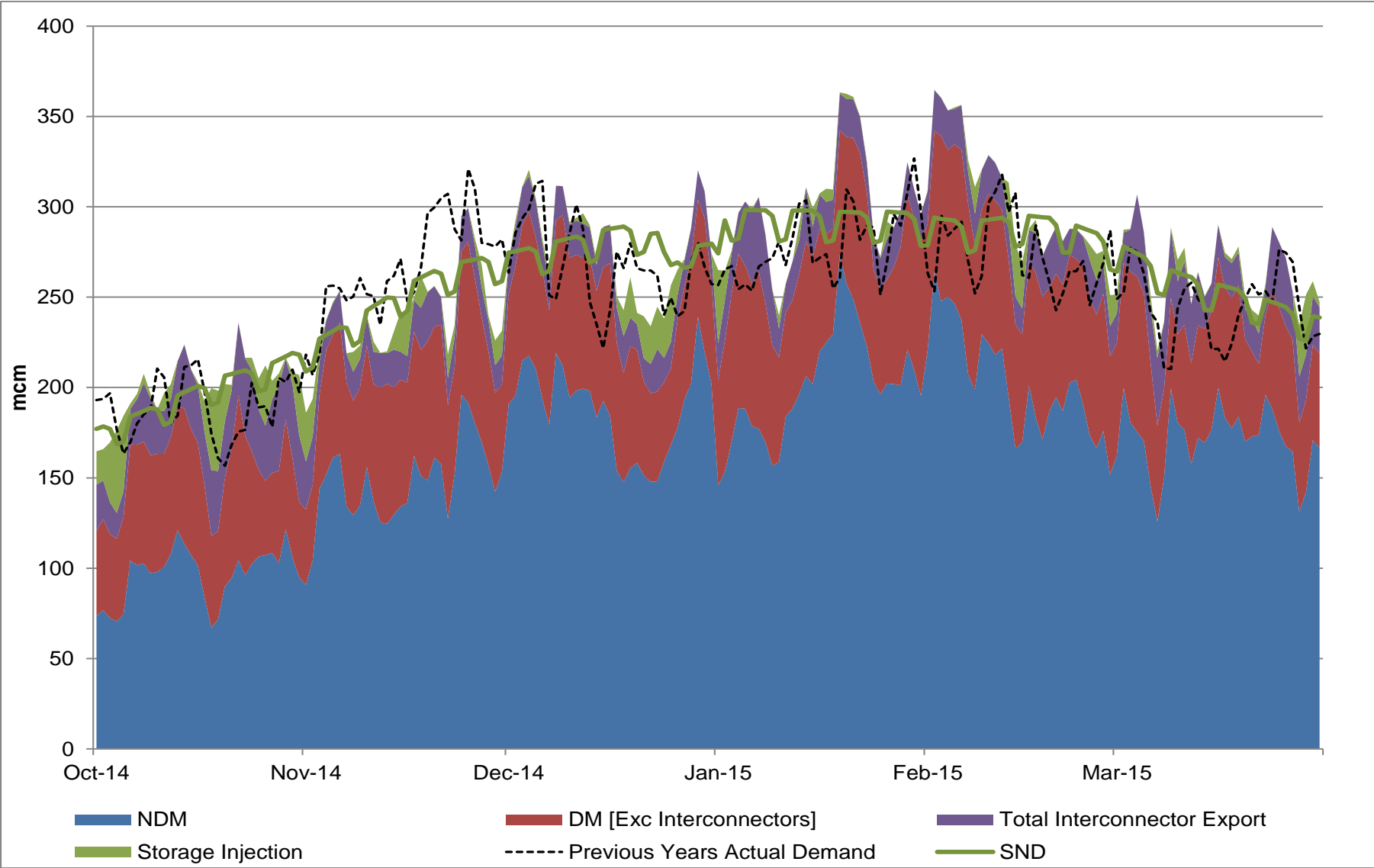
Demand [1st October 2014 to 31st March 2015]

NTS Demand 14/15 (mscm/d)

Exit	Min	Max	Ave	Winter Outlook Low / High [14/15 Oct to Mar]	Winter Actual Low / High[13/14 Oct to Mar]	Comments
 LDZ	67.9	277.7	184.6	32 - 309	53 - 219	<ul style="list-style-type: none"> Winter 14_15 IUK imports to the UK averaged 1.4 mcm and export to the Continent averaged 6.4mcm. Max Import during this period was 15.3 mcm [26.5mcm winter 13_14] and Max Export was 30.2mcm [20.3mcm winter 13_14]. Winter 14_15 average Power Station Demand was 39.9 mcm with a max of 64.3 mcm on 21st Dec 2014 [Winter 13_14: average 36.5 with a max of 59.9 mcm on 25th Nov 2013] Storage injection has averaged close to the lower forecast levels during Winter 14_15 . Actual Demand compared to SND for winter 14_15[Max below SND -51.0 mcm on 22nd Dec and Max above SND +70.2 mcm on 02nd Feb].
 INTERCONNECTORS Ireland	10.6	22.5	16.1	10 – 21	11 - 21	
 INDUSTRIAL	6.5	12.3	9.5	20 – 36 (DM + Ind)	21 – 33 (DM + Ind.)	
 POWERSTATION	17.4	64.3	39.9	13 – 75	20 - 68	
 STORAGE INJECTION	0.0	48.3	7.4	0 - 65	0 - 65	
 IUK INTERCONNECTORS	0.0	30.2	6.3	0 - 30	1 - 20	
Exit	Min	Max	Ave	Winter Outlook Range [14/15]		
Net Demand	165.2	364.8	264.0	215 - 425		
SND exc. IUK & SI	141	294	243			

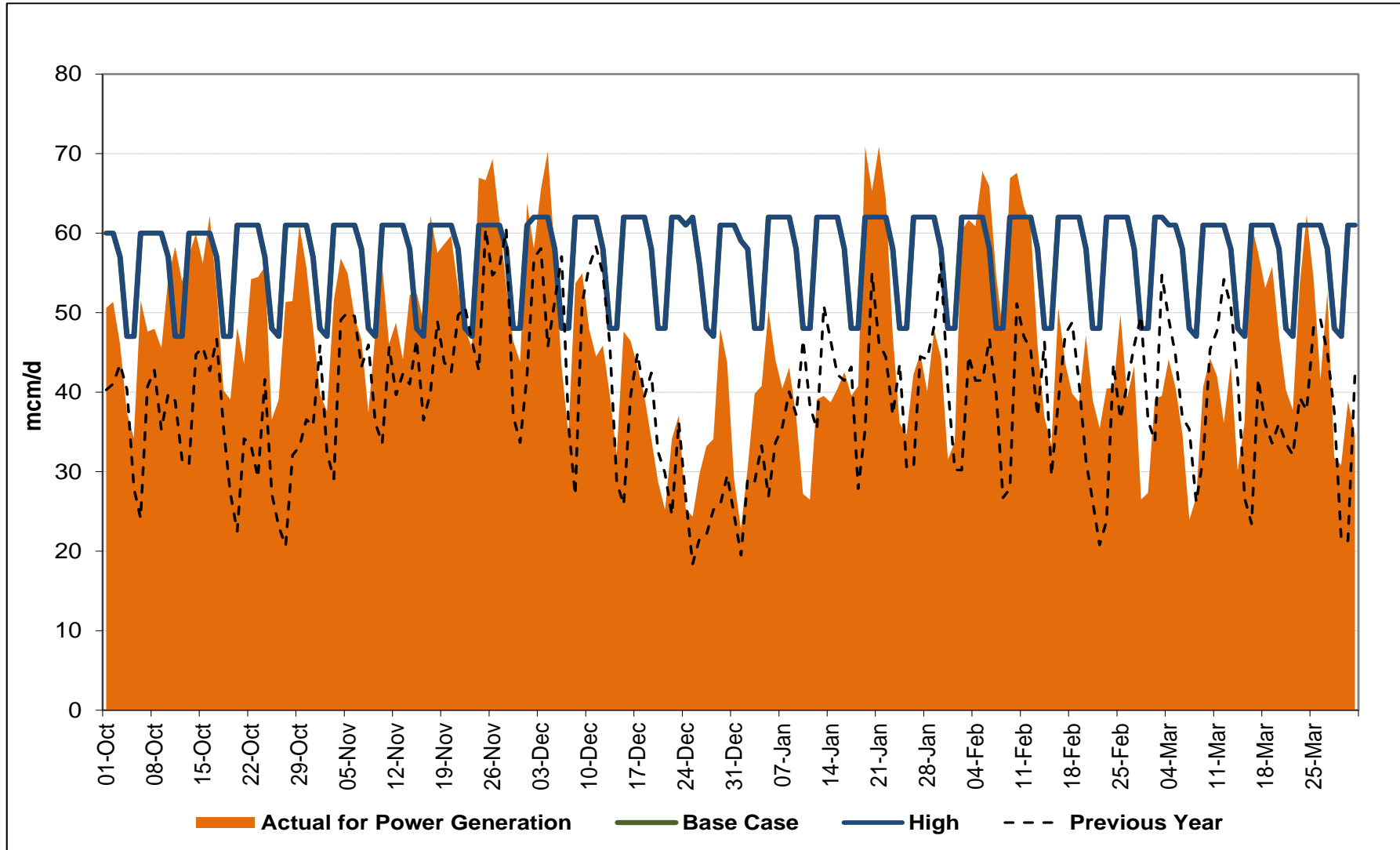
Gas Demand Breakdown

1st October 2014 to 31st March 2015 vs Previous Year

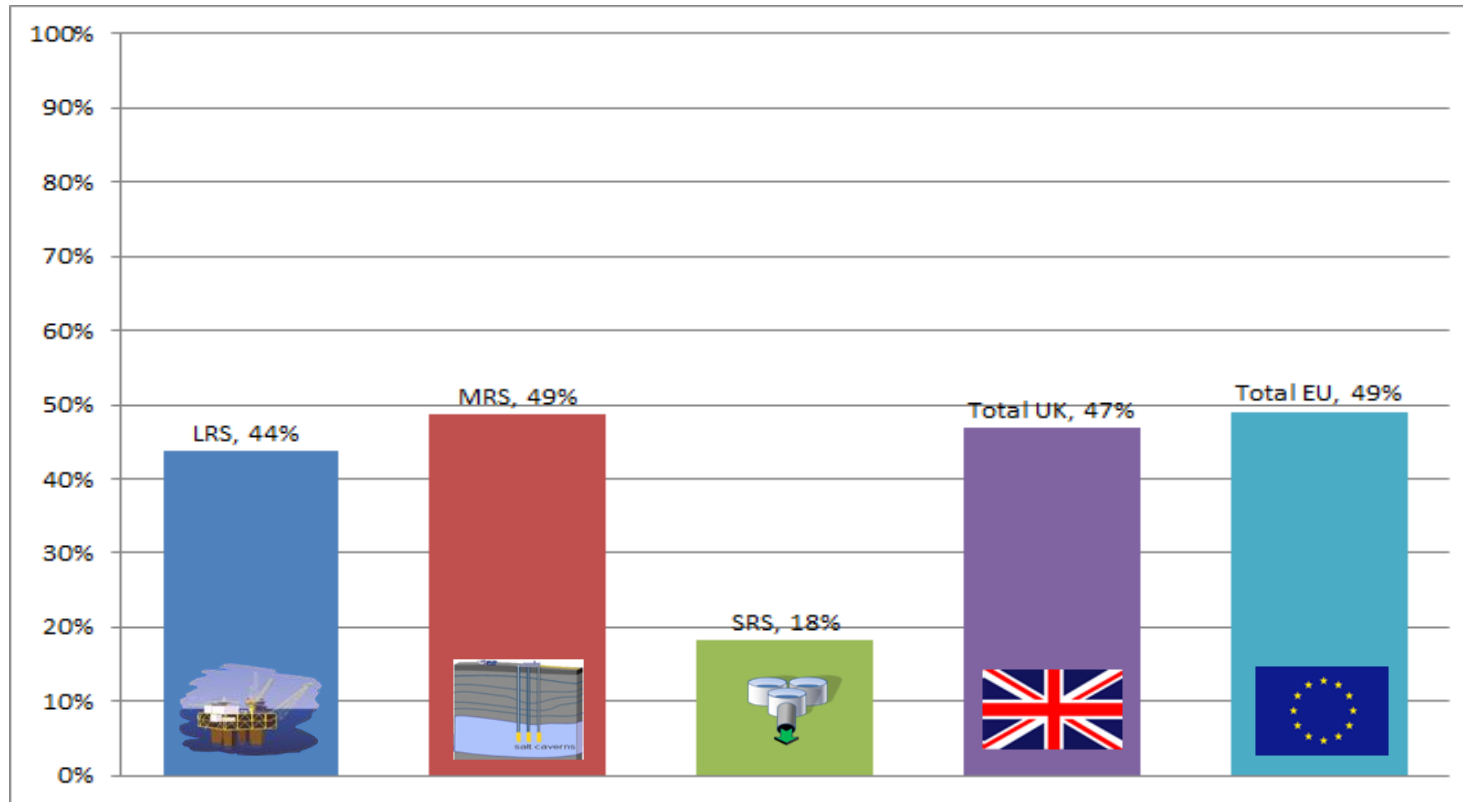


Gas Consumption for Power Generation nationalgrid

1st October 2014 to 31st March 2015



Storage Stocks 14/15 [UK & EU]



- Given the relatively mild winter to date, Storage Stock Levels remain healthy in both UK and EU.
- MRS has been used to balance the shortfall on the NTS.

Energy Balancing 14/15

NGG Balancing Actions	Oct 14 to Mar 15	Oct 13 to Mar 14	Comments
Buy Actions	99 (77%)	70 (46%)	<ul style="list-style-type: none"> 65% less NGG Sell actions than the same period for the previous year. 41% more NGG Buy actions than the same period for the previous year. No Material / Non-Material Breaches.
Sell Actions	29 (23%)	83 (54%)	
Buy Actions [Volume: Gwh]	1778	1230	
Sell Actions [Volume: Gwh]	-509	-1446	
Number of Balancing Actions	128	153	
Number of Material Breaches	0	0	
Number of Non - Material Breaches	0	0	
NGG set Default Marginal Prices [SMPB: Average %]	14%	15%	
NGG set Default Marginal Prices [SMPS: Average %]	9%	18%	

APX Market Prices (p/th) [Min / Max]

	SAP	SMPB	SMPS
Oct 14 to Mar 15	40.5 - 59.5	41.5 – 60.4	35.0 – 58.5
Oct 13 to Mar 14	54.4 - 72.0	55.2 – 73.0	47.2 – 71.0

Net Balancing Costs

	Imbalance	Scheduling	OCM	Net
Feb 15	£4,590,464 (CR)	£280,233 (CR)	£5,386,097 (DB)	£515,399 (DB)

Capacity Neutrality 14/15

Revenue / Costs	Apr 14 to Mar 15	Apr 13 to Mar 14	Comments
WDDSEC/DAI Entry Capacity Revenue	-£461,484	-£514,570	* Entry Capacity Overrun Revenue Apr 14 to Feb 15. Mar 15 data not yet available
Total Entry Constraint Management Operational Costs	£0	£0	
Entry Capacity Overrun Revenue	-£321,953 *	-£121,077	
Non-Obligated Sales Revenue (Entry only)	-£734,334	-£726,665	
Revenue from Locational Sells and PRI Charges	£0	£0	
Net Revenue	-£1,517,771	-£1,362,312	

Customer Outputs (Feb / Mar 2015)

Customer Output	Performance	Success
Capacity Constraints	None	No Scalebacks or Buy Backs
Pressure Obligations	22 breaches of Agreed / Assured [11 at Non-Significant Offtakes / 11 at Significant Offtakes]	99.7% achieved
Maintenance	3 Non Routine Operations Completed	6 jobs due to complete in Feb/ Mar are subject to extensions / re-plan.
Flow Notifications	92,434 OPNs received 44,200 outside contractual parameters	16 rejections
Gas Quality Events	243 actions taken	3 Gas Quality Breaches
Operating Margins	None utilised	
Gas Deficit Warnings	None	
Margins Notices	None	
Balancing Actions	37 Actions [28 Buy / 9 Sell]	