

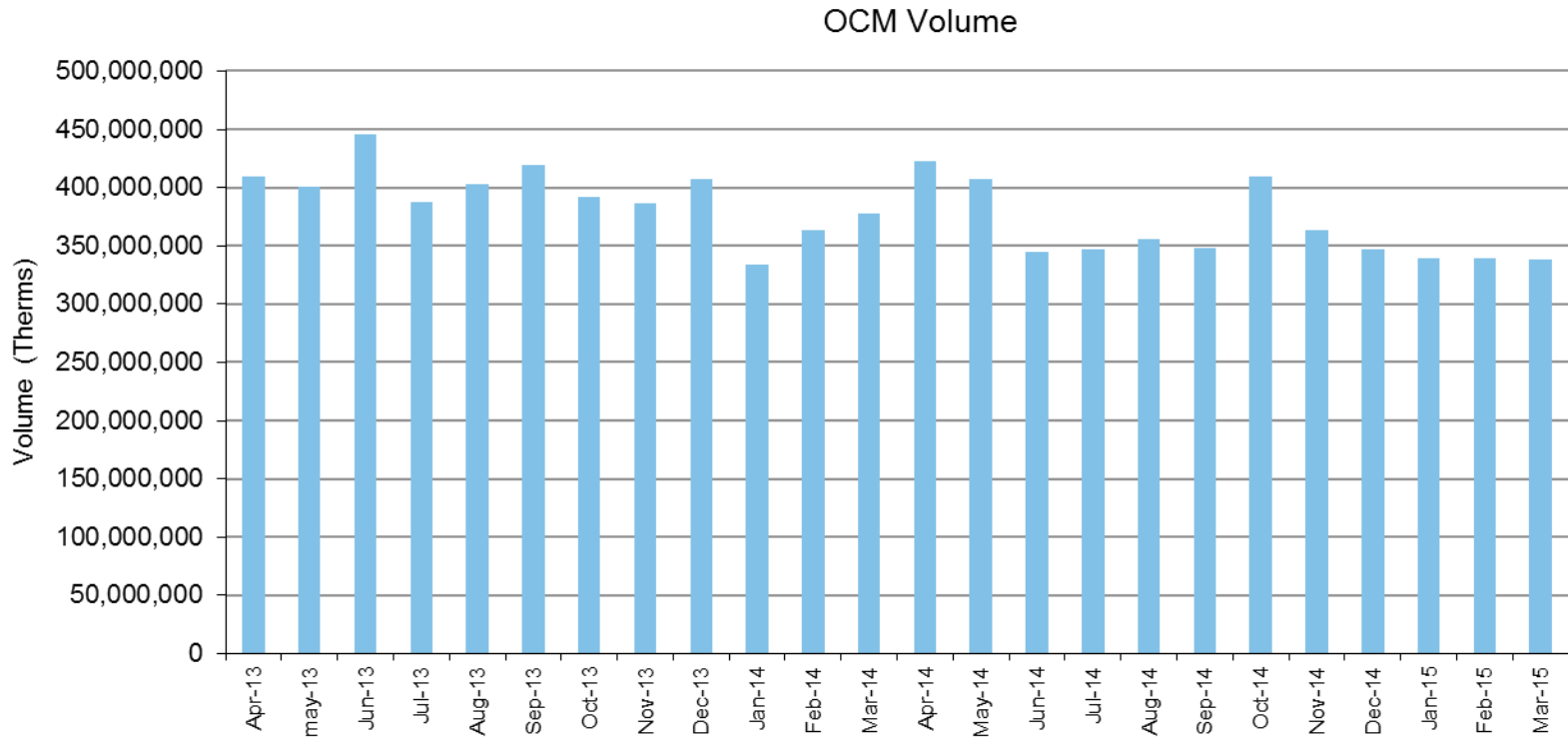


# ICE Endex UK Gas update

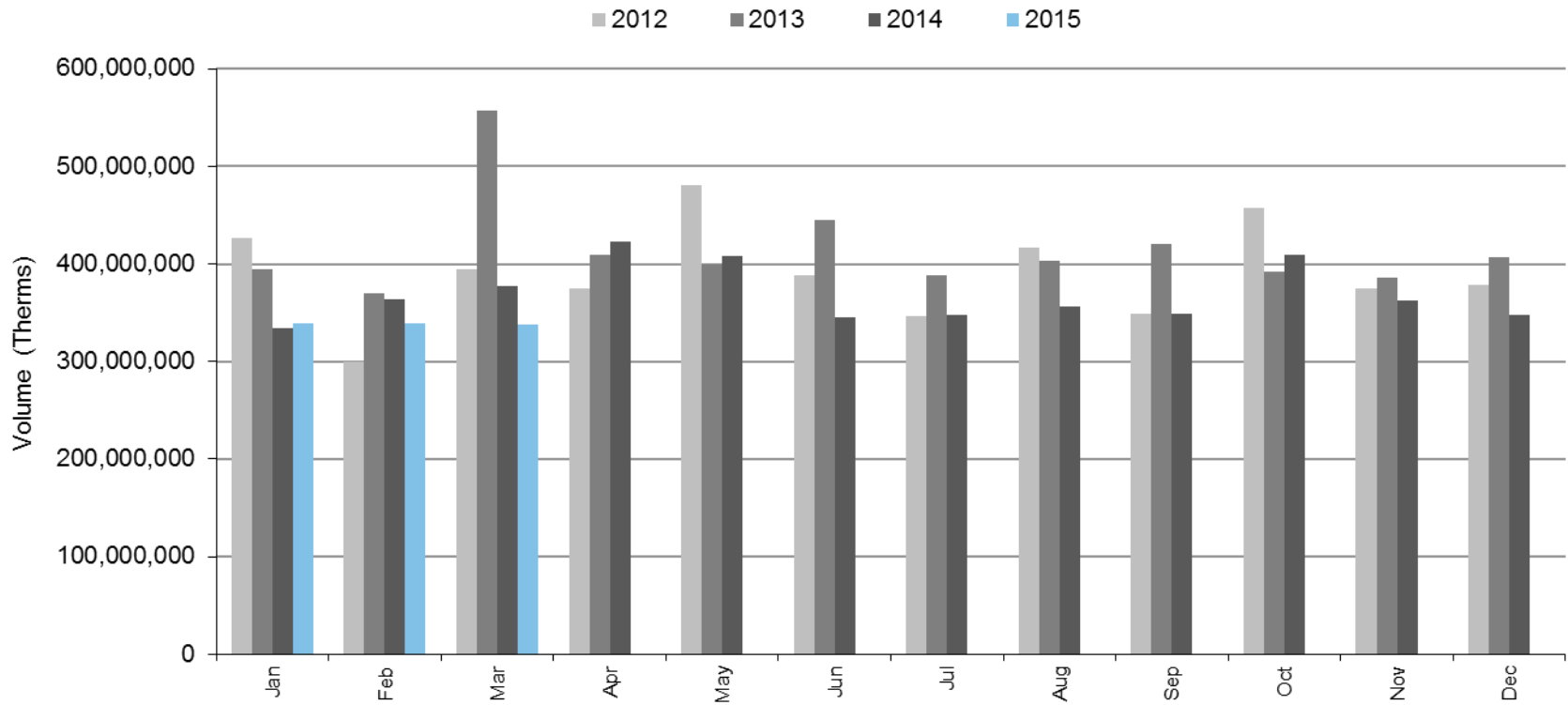
April 2015, London

# Volumes per month (last 24 months)

Average monthly volume: 378,649,000

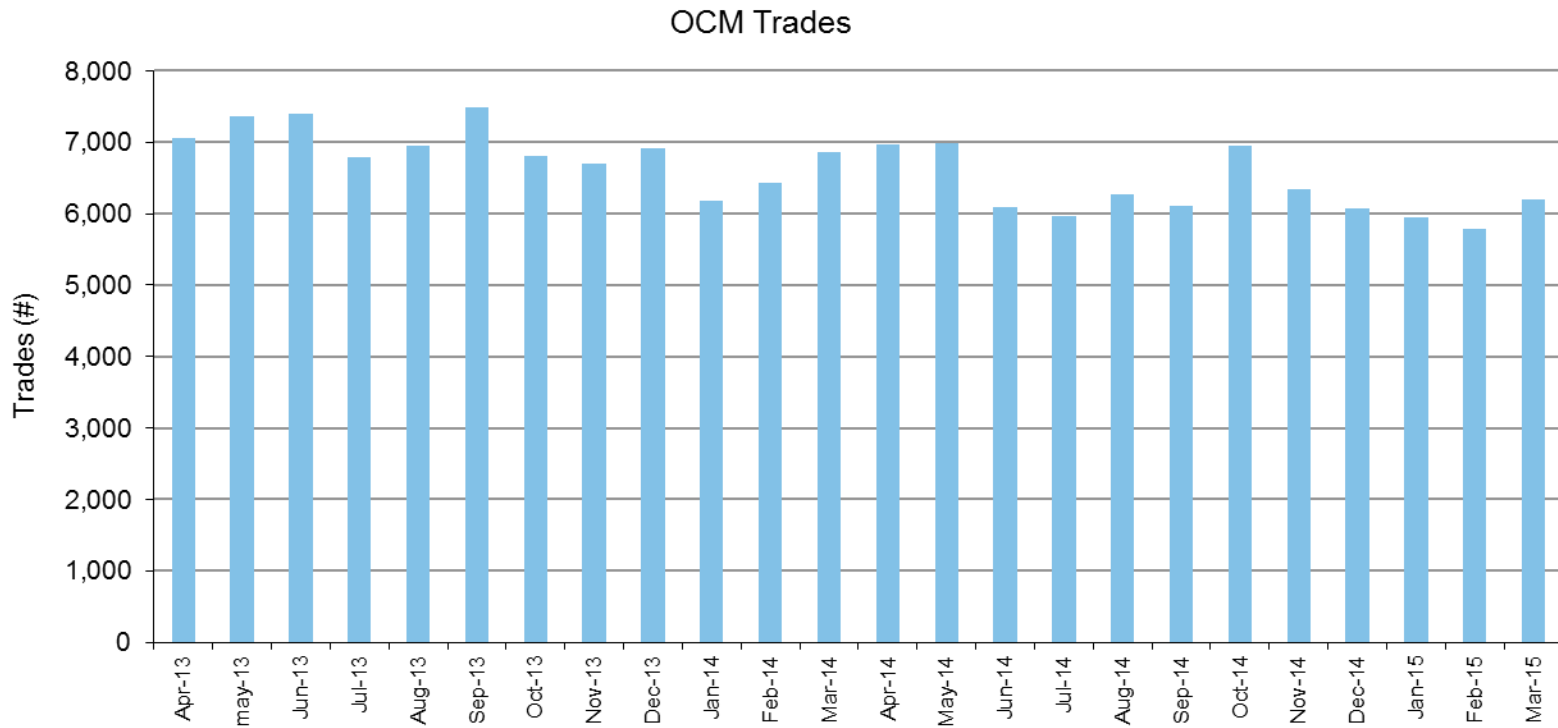


# Volumes per month (year on year)



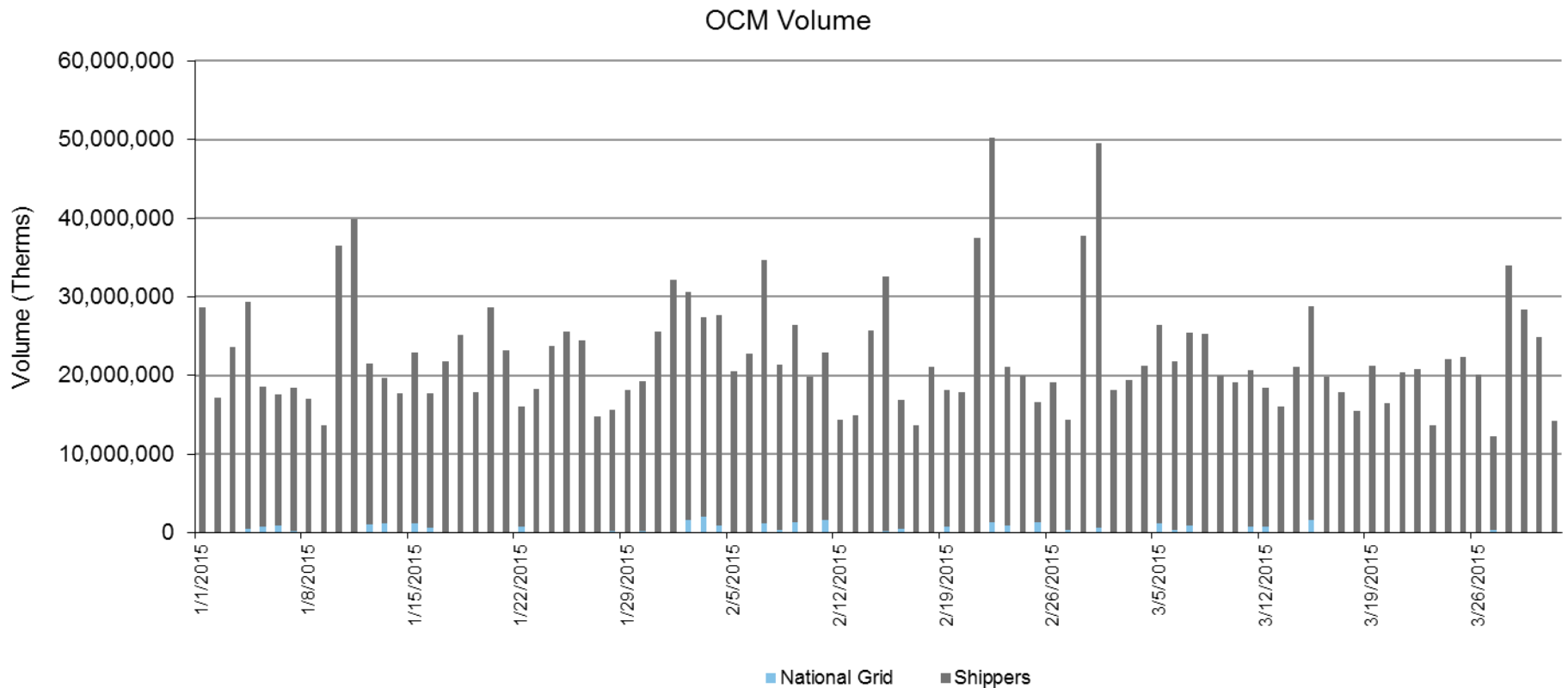
# Trades per month (last 24 months)

Average monthly number of trades: 6,609



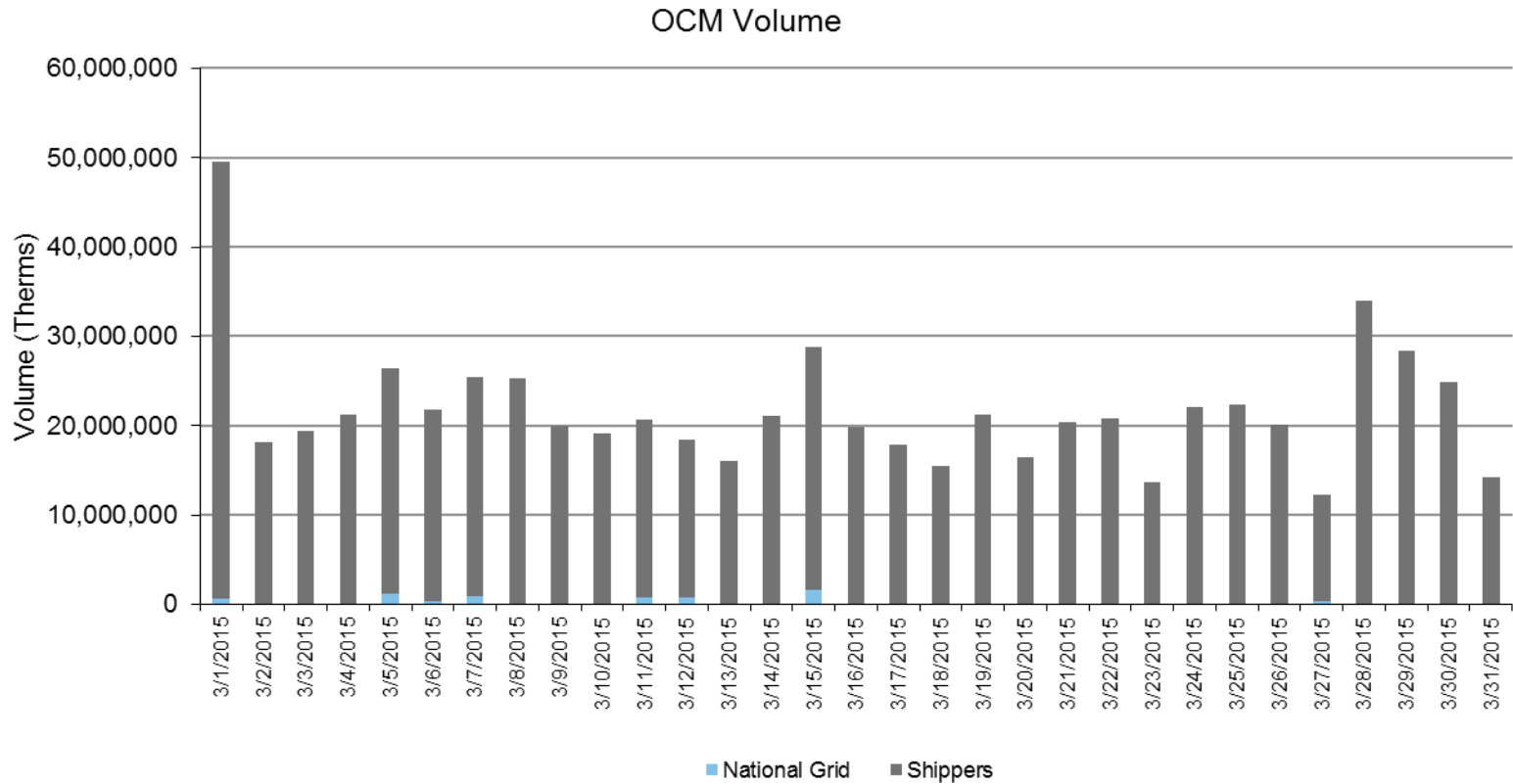
# Daily volumes Jan 2015 - Mar 2015

Shippers % share of volume: 98.6%  
NGC % share of volume: 1.4%

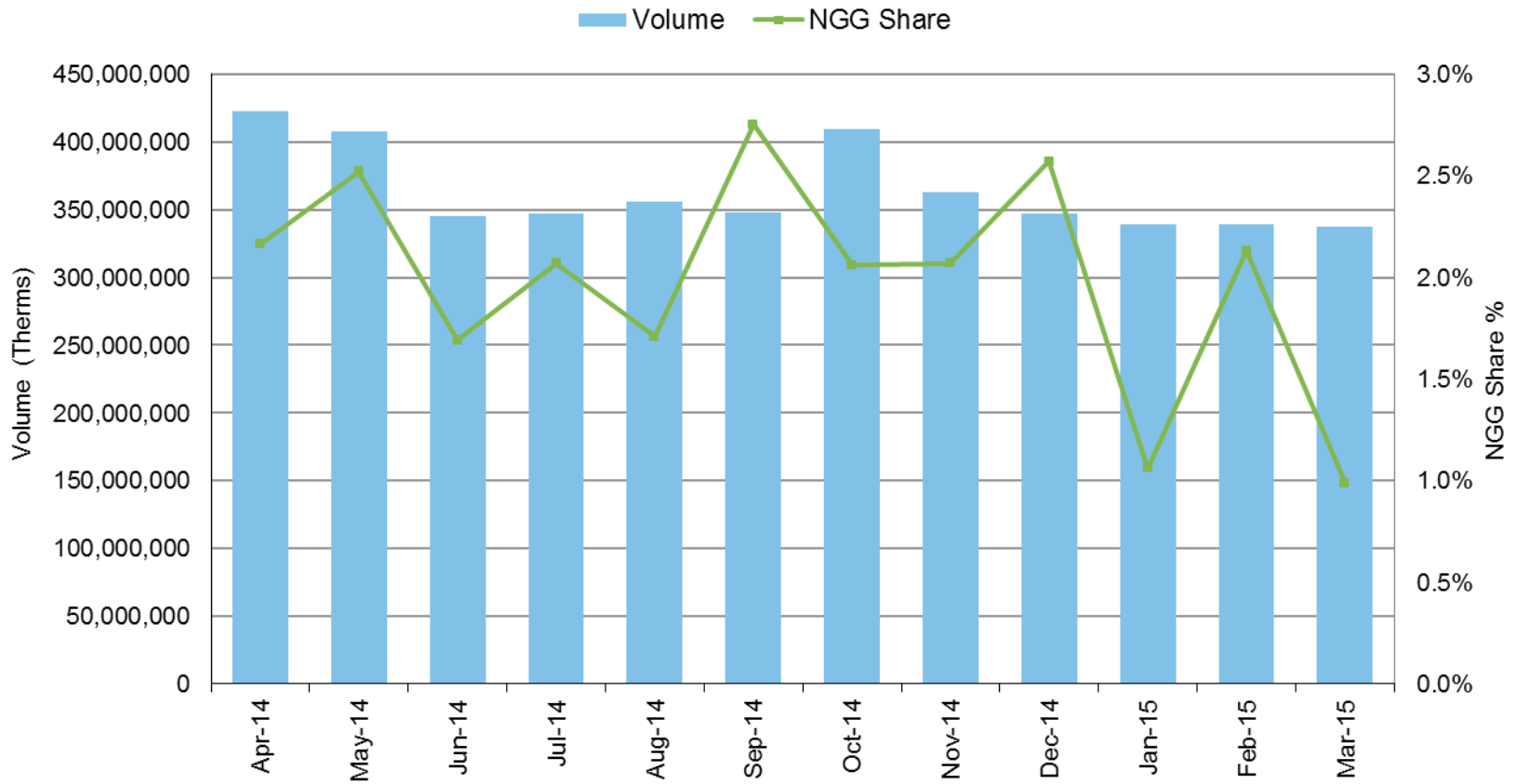


# Volumes March 2015

Highest volume: 24,765,000 (1 Mar)  
Lowest volume: 6,115,000 (27 Mar)  
Average total daily vol: 10,894,645  
NGC share of volume: 0.99%

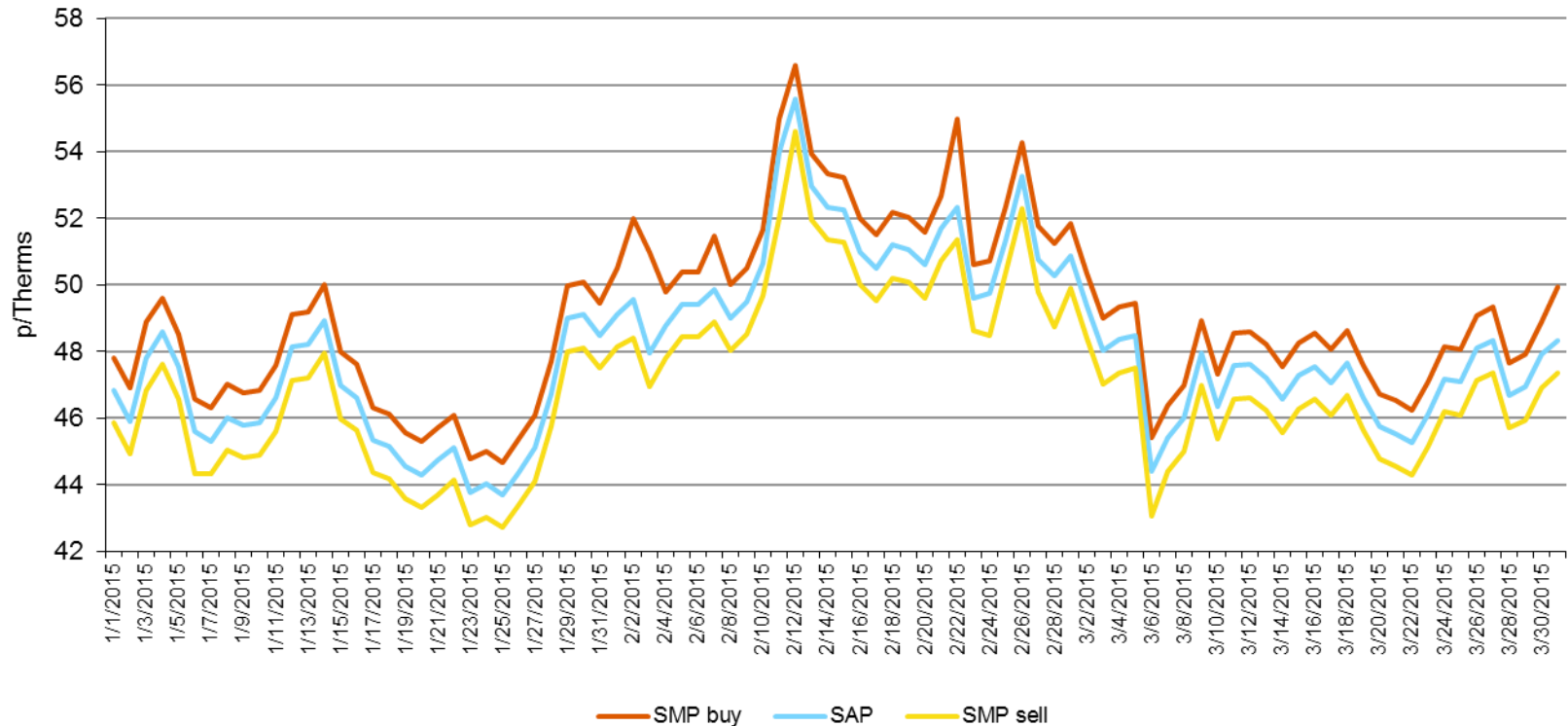


# Volumes and NGG share



# Daily SAP/SMP prices

Highest SMP buy:	56.58 p/th (12 Feb)	Lowest SMP buy:	44.68 p/th (25 Jan)
Highest SAP:	55.60 p/th (12 Feb)	Lowest SAP:	43.70 p/th (25 Jan)
Highest SMP sell:	54.61 p/th (12 Feb)	Lowest SMP sell:	42.71 p/th (25 Jan)





# Points of interest

## OCM on WebICE

- › 51 members have traded on WebICE since go live
- › 3031 Trades as at 17.04.2015
- › 181,210,000 Terms as at 17.04.2015

## WebICE Developments - June Version 12.975

- › AON orders version
- › SWEEP function
- › Iceberg orders matching amended
- › Alarms for Current / Default & RFQ 1 Ticker Filtering

# Points of interest

## Medium Term

- › ICE Mobile OCM View only and basic order functionality for Title market
- › You may have access already to ICE mobile for the ICE Endex futures markets e.g. TTF <https://www.theice.com/ice-mobile>

## Training

- › Screen Options – including floating SAP / SMP index screen, Tips and Tricks etc please contact us to arrange

## OCM Data Options

- › [www.theice.com](http://www.theice.com) “Report Center” – Publication of final SAP/SMP prices 06:00 UK Time
- › <https://downloads.theice.com> Public Market trade, order, historical SAP / SMP data shortly after 03:35 UK Time
- › Historical SAP/SMP data pre WebICE go live available on request
- › Private deal Reports online via WebICE or [www.theice.com](http://www.theice.com)
  
- › Live data via RTD Excel available free for WebICE users or API feeds cost variable depending on existing tech setup

# Points of interest

## OCM Clearing

- › Migration from APX Clearing to ICE Clear Europe
- › Target date mid July to be confirmed very shortly
- › Clearing Bank relationship
- › Details to be published with Go live Date confirmation

## Fees

- › Temporary and unintended effect of the migration has been to increase user costs
- › ICE Endex will rebate part of the membership fee based on the increased user fee costs
- › The Spot Fee schedule is under review and will be communicated pending final approvals

# Thank you

## DISCLAIMER

The information contained in this document ("Presentation") has been prepared by ICE Endex and is subject to change without notice. Copyright and intellectual property right protection exists in this Presentation and it may not be reproduced, distributed or published with any third party, in whole or in part, without the express prior written permission from ICE Endex. All rights are reserved. While reasonable care has been taken to ensure that the information contained herein is true and accurate, ICE Endex makes no representation to its correctness, reliability or completeness including likelihood of achievement or reasonableness of any forecasts, prospects, returns or statements in relation to future matters that may be contained in this Presentation. Neither ICE Endex nor any of its directors or employees accepts any liability in respect of the information contained in the Presentation or for any loss arising from the use of this Presentation, its contents or otherwise arising in connection with it. This Presentation does not constitute an offer, invitation or recommendation to any transaction and neither is it to be taken as any form of commitment on the part of ICE Endex to proceed with any transaction.