



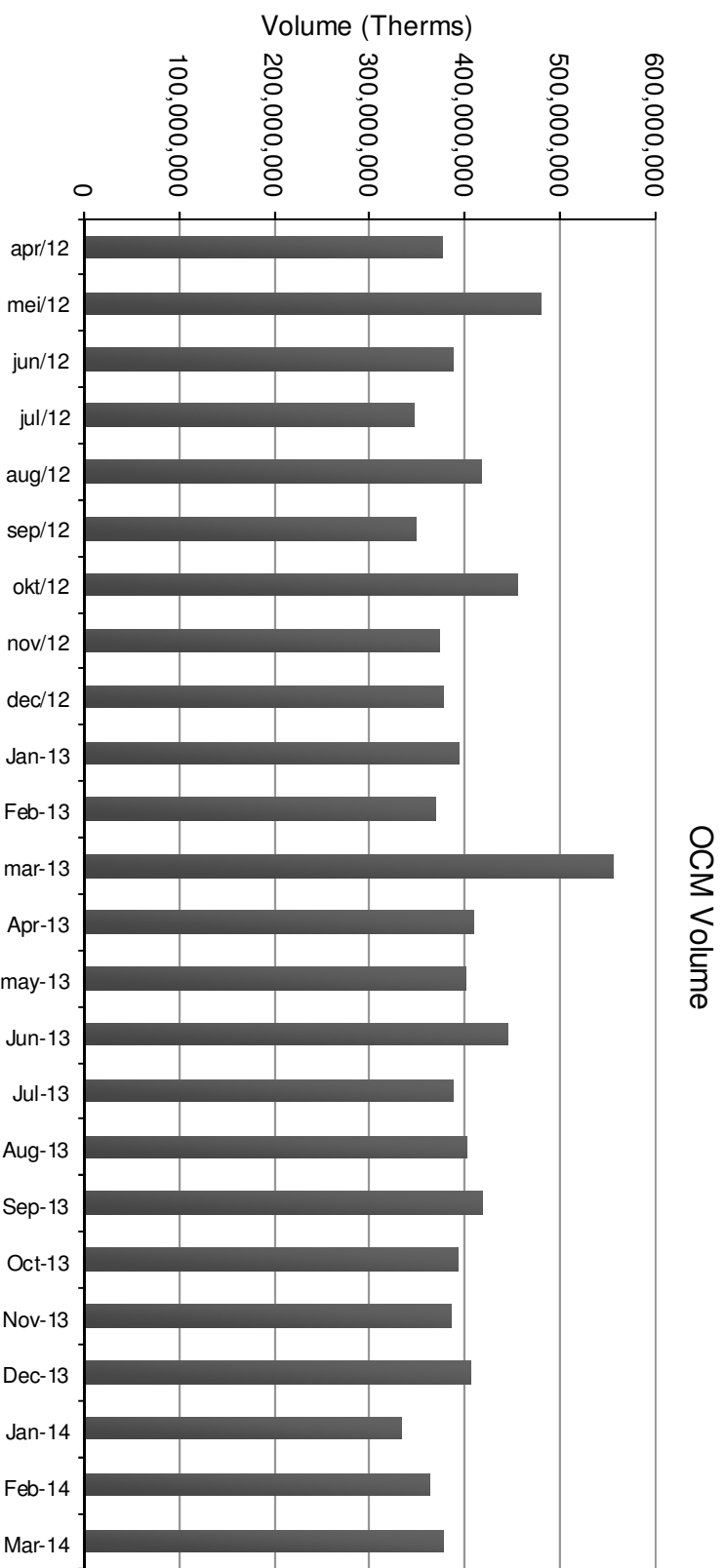
# ICE Endex UK Gas update

April 2014, London

# Volumes per month since April 2012

Average monthly volume:

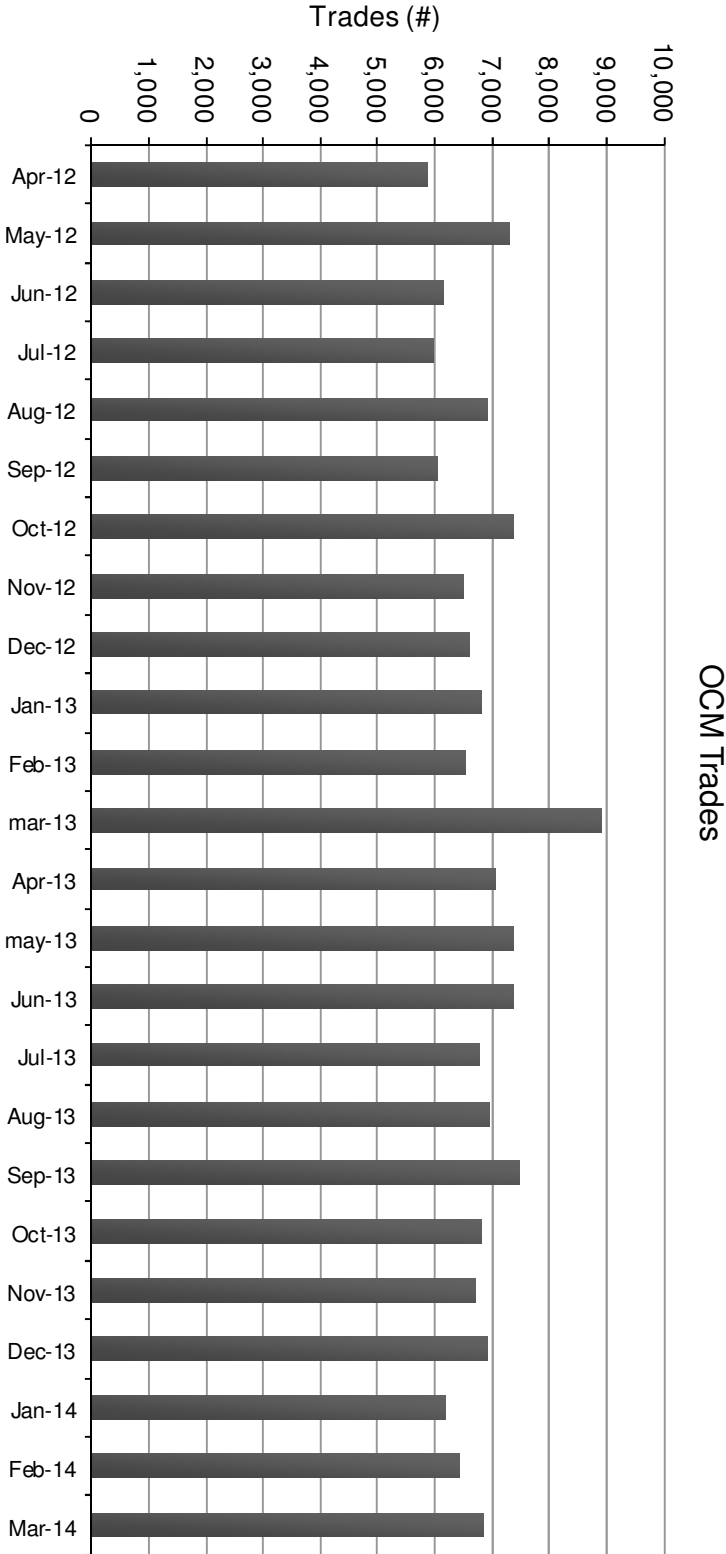
400,500,000



ICE Index

# Trades per month since April 2012

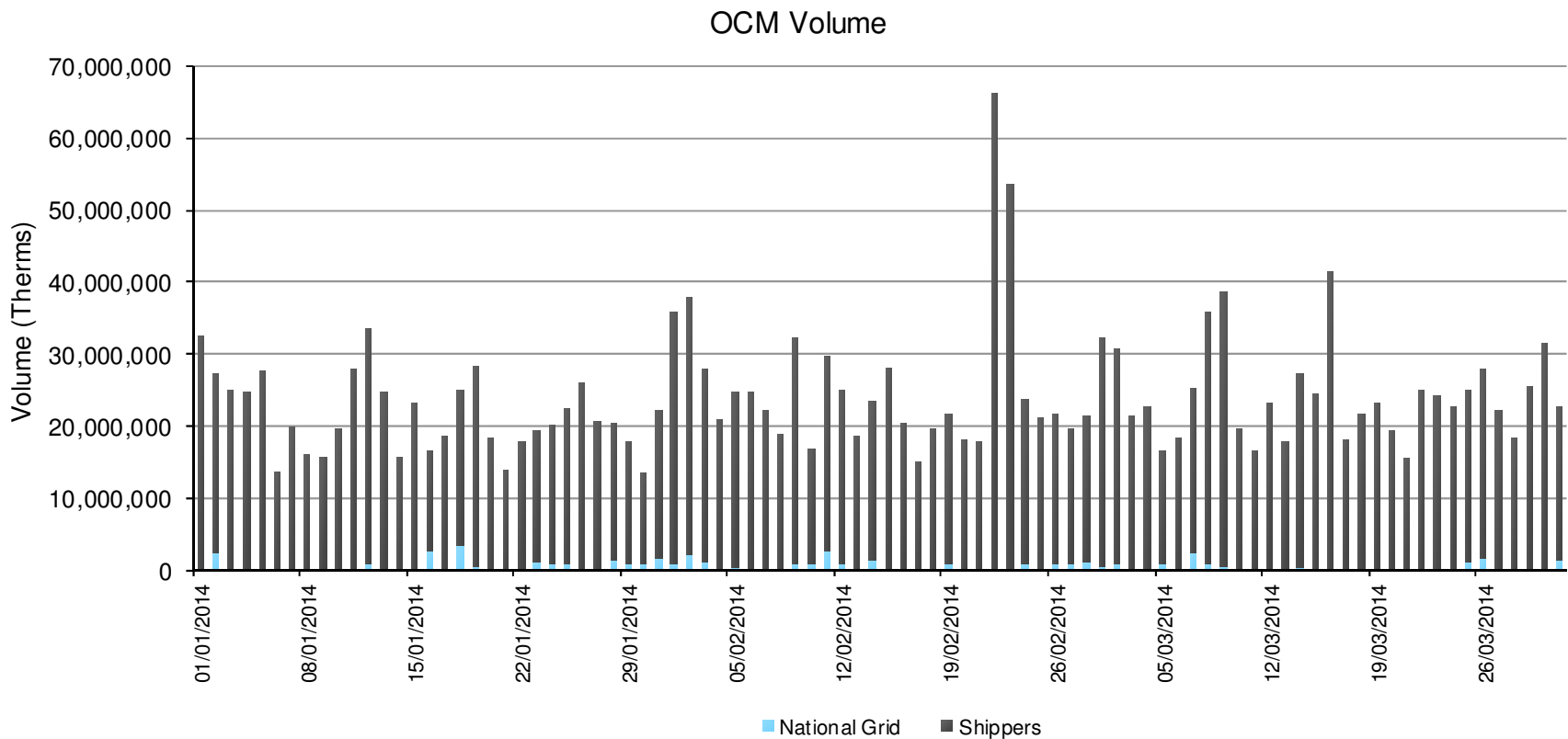
Average monthly number of trades: 6,831



# Daily volumes Jan 2014 - Mar 2014

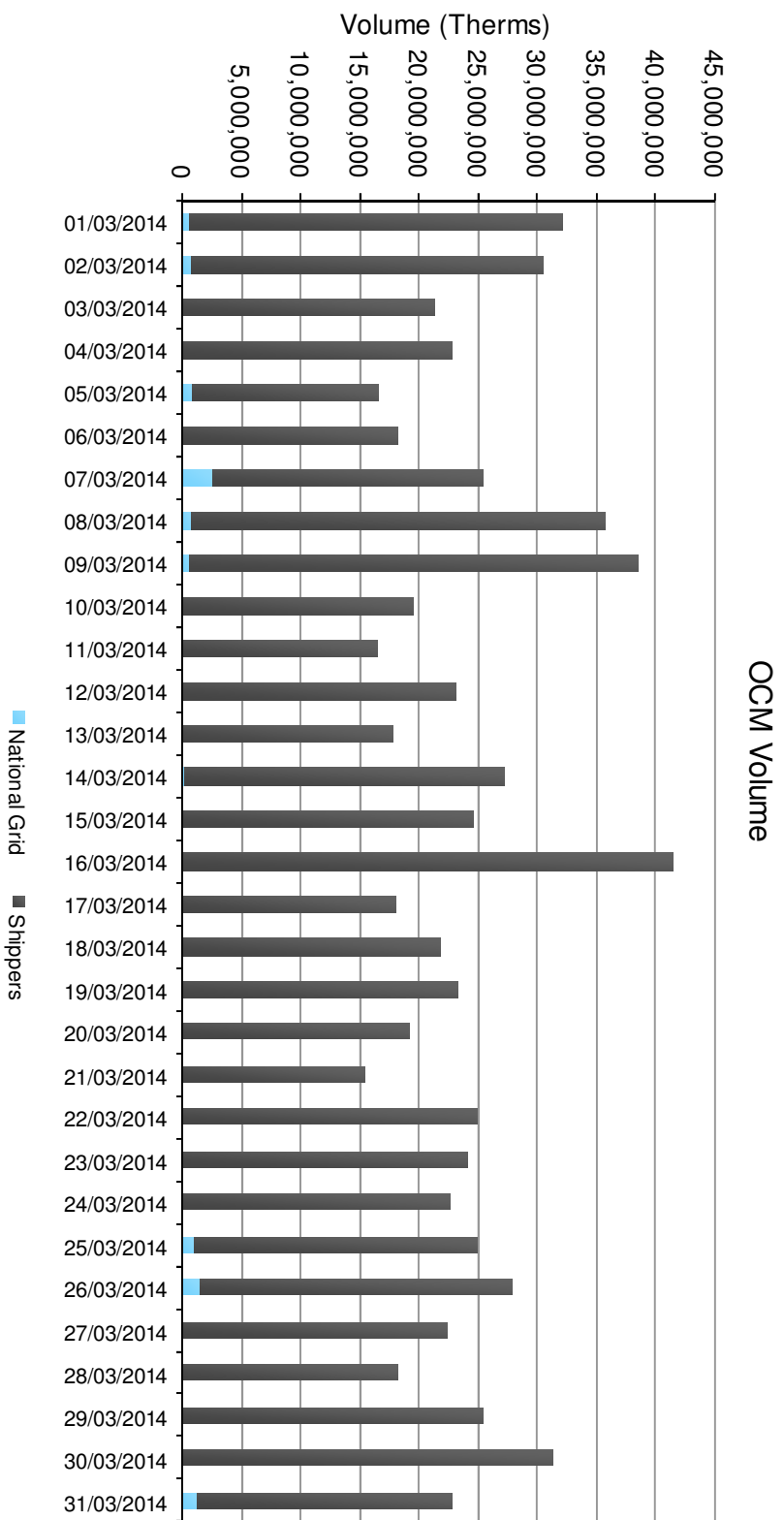
Shippers % share of volume: 98.1%

NGC % share of volume: 1.9%



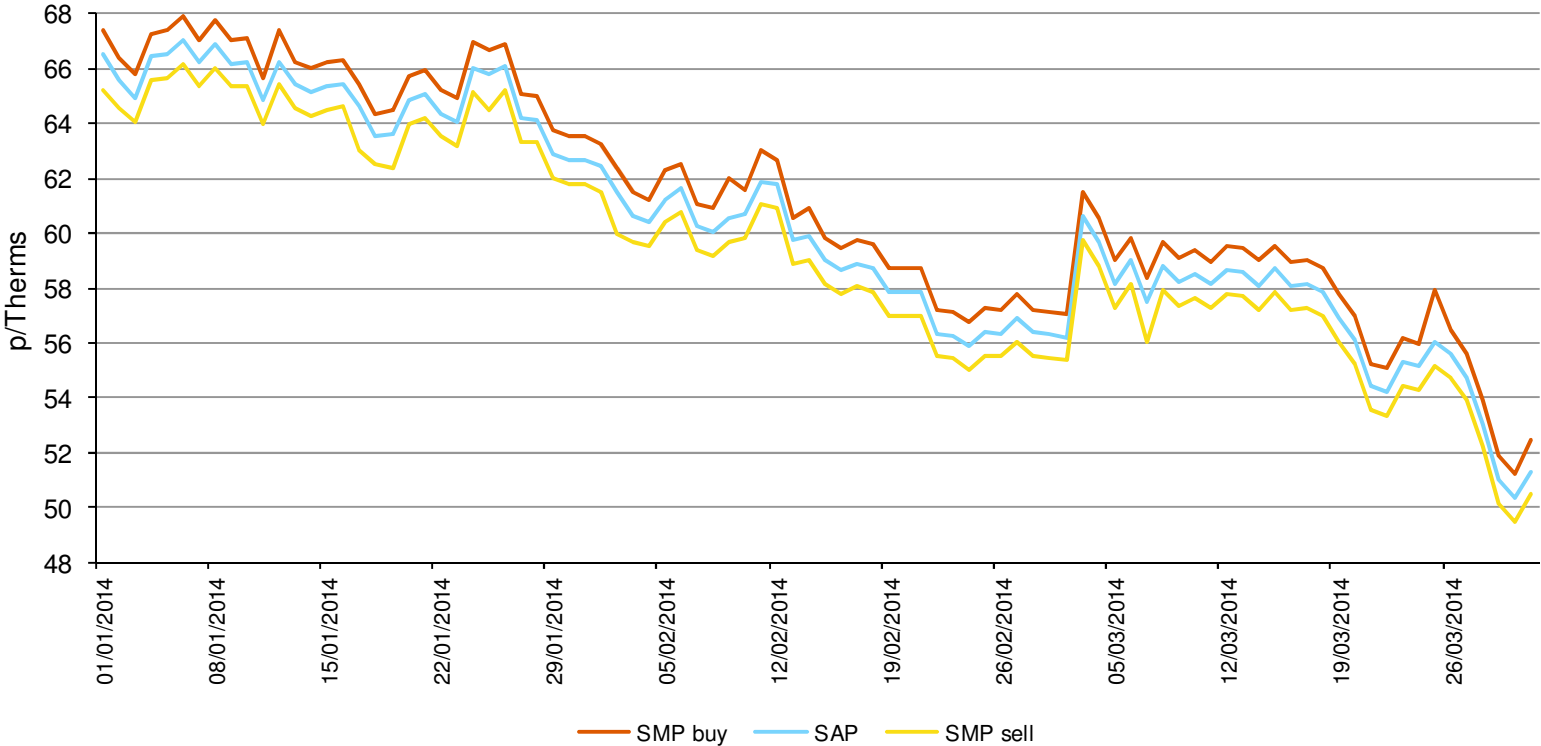
# Volumes March 2014

Highest volume: 20,738,000 (16 March)  
 Lowest volume: 7,761,000 (21 March)  
 Average total daily vol: 12,170,710  
 NGC share of volume: 1.30%



# Q1 2014 Daily SAP/SMP prices

Highest SMP buy:	67.91 p/th (6 Jan)	Lowest SMP buy:	51.21 p/th (30 Mar)
Highest SAP:	67.05 p/th (6 Jan)	Lowest SAP:	50.34 p/th (30 Mar)
Highest SMP sell:	66.19 p/th (6 Jan)	Lowest SMP sell:	49.48 p/th (30 Mar)





# Thank you

#### DISCLAIMER

The information contained in this document ("Presentation") has been prepared by ICE Endex and is subject to change without notice. Copyright and intellectual property right protection exists in this Presentation and it may not be reproduced, distributed or published with any third party, in whole or in part, without the express prior written permission from ICE Endex. All rights are reserved. While reasonable care has been taken to ensure that the information contained herein is true and accurate, ICE Endex makes no representation to its correctness, reliability or completeness including likelihood of achievement or reasonableness of any forecasts, prospects, returns or statements in relation to future matters that may be contained in this Presentation. Neither ICE Endex nor any of its directors or employees accepts any liability in respect of the information contained in the Presentation or for any loss arising from the use of this Presentation, its contents or otherwise arising in connection with it. This Presentation does not constitute an offer, invitation or recommendation to any transaction and neither is it to be taken as any form of commitment on the part of ICE Endex to proceed with any transaction.