

# Ops Forum - Linepack Overview



# Predicted Closing Linepack Funnel

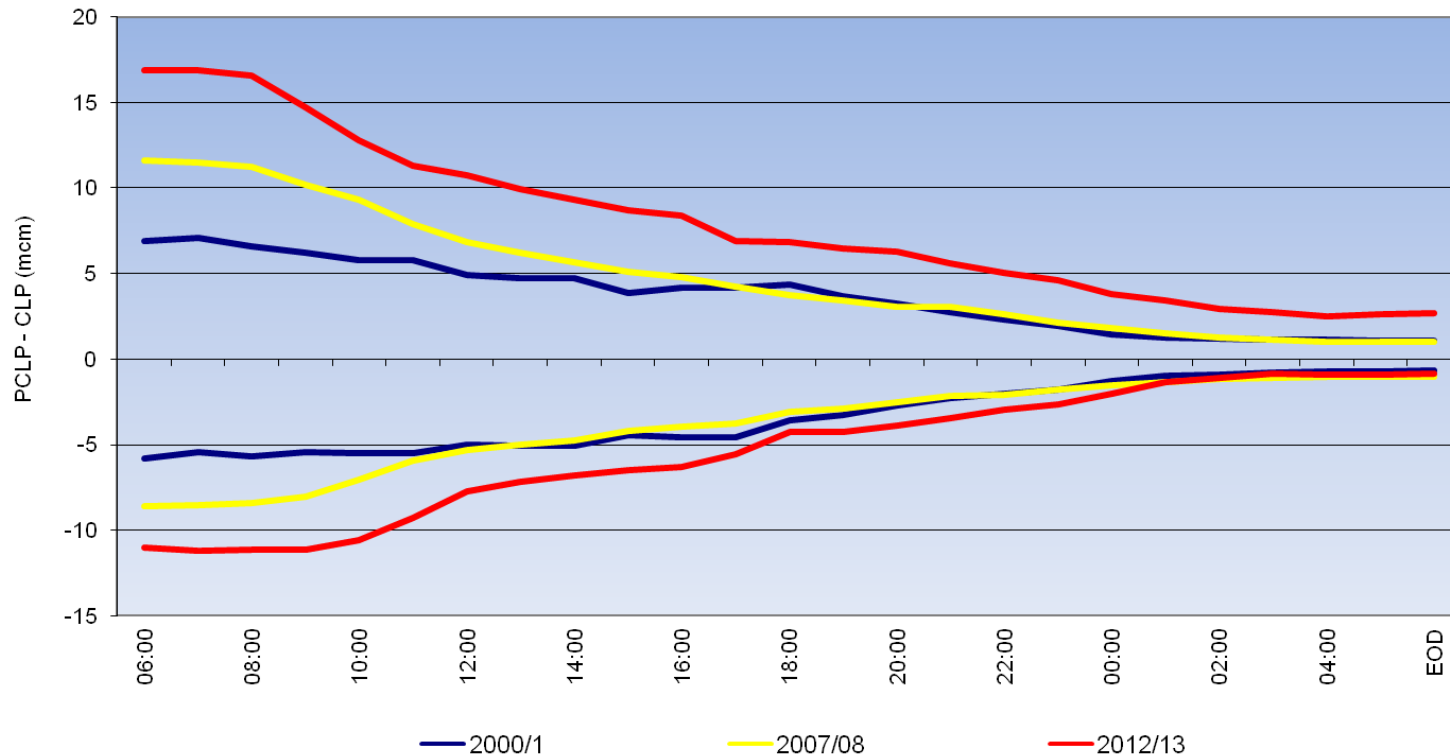
0600 PCLP v CLP	2000/01	2007/08	2012/13	2013/14 YTD
Average Heavy	6.90	11.63 ↓	16.85 ↓	12.70 ↑
Average Light	-5.82	-8.61 ↓	-11.02 ↓	-12.10 →

1800 PCLP v CLP	2000/01	2007/08	2012/13	2013/14 YTD
Average Heavy	4.35	3.76 →	6.82 ↓	4.28 ↑
Average Light	-3.60	-3.13 →	-4.31 →	-5.76 ↓

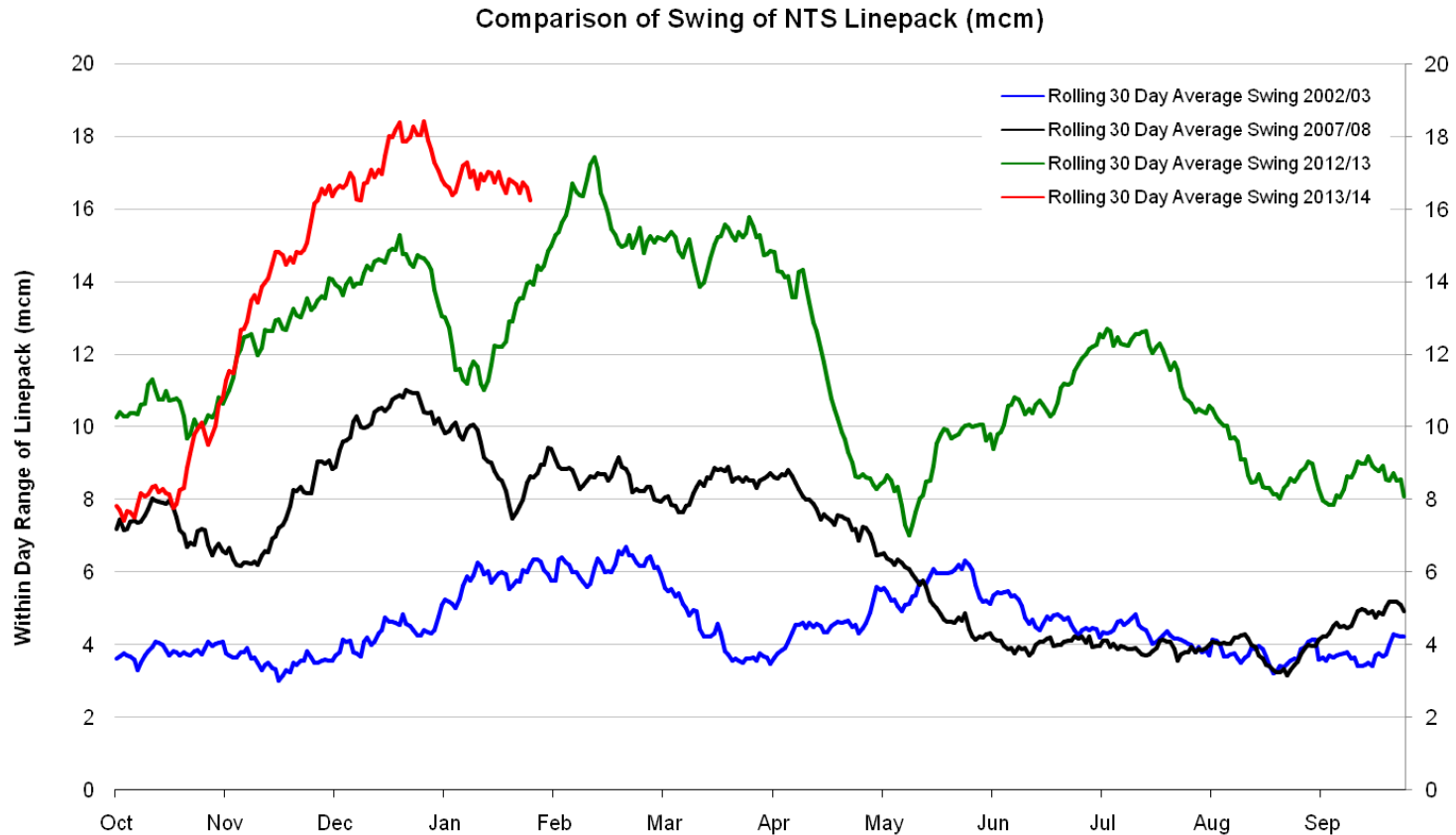
1200 PCLP v CLP	2000/01	2007/08	2012/13	2013/14 YTD
Average Heavy	4.95	6.83 ↓	10.76 ↓	7.82 ↑
Average Light	-5.02	-5.35 →	-7.78 ↓	-8.20 →

2400 PCLP v CLP	2000/01	2007/08	2012/13	2013/14 YTD
Average Heavy	1.46	1.84 →	3.84 ↓	1.83 ↑
Average Light	-1.29	-1.56 →	-2.05 →	-2.00 →

PCLP Funnel



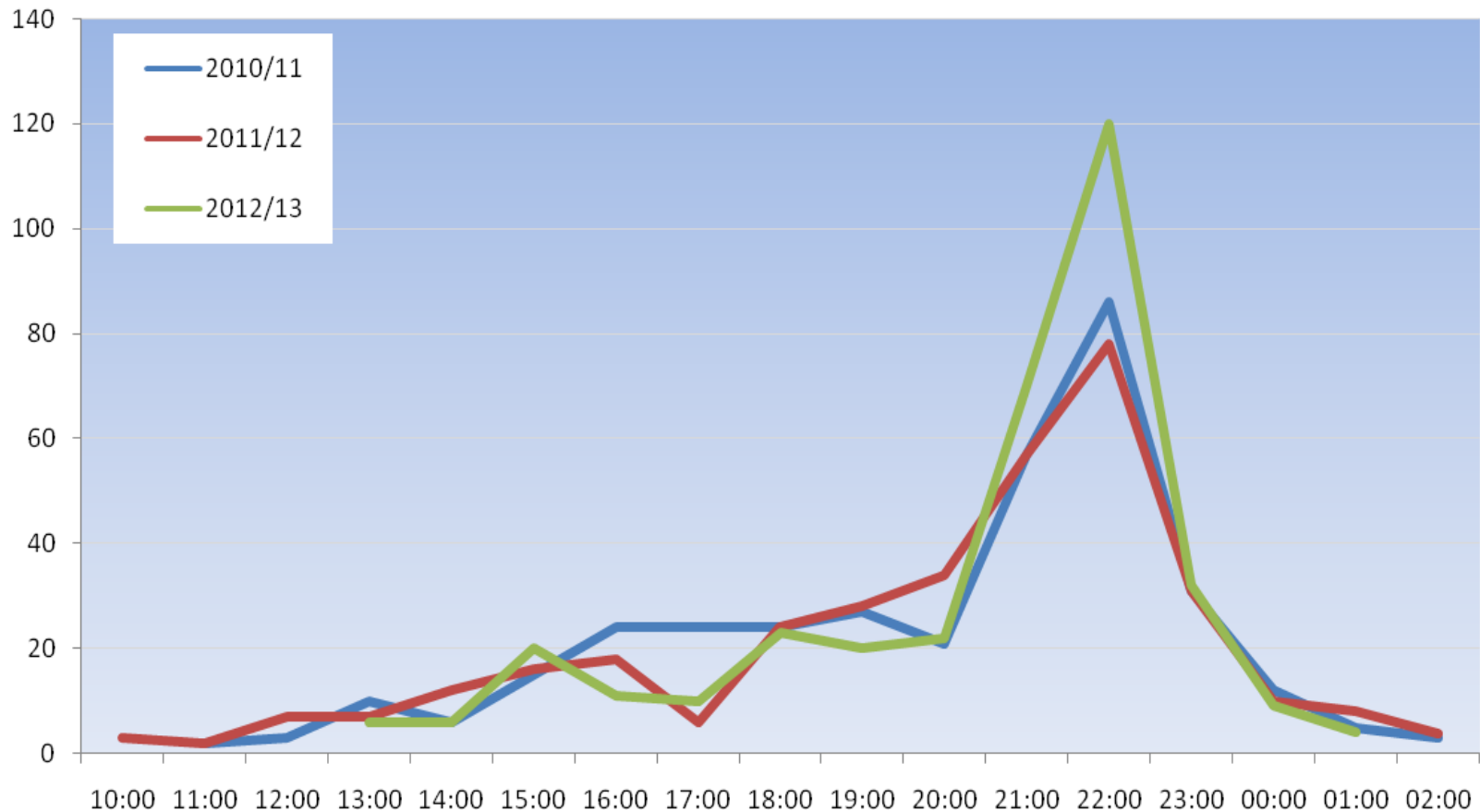
# Linepack Swing



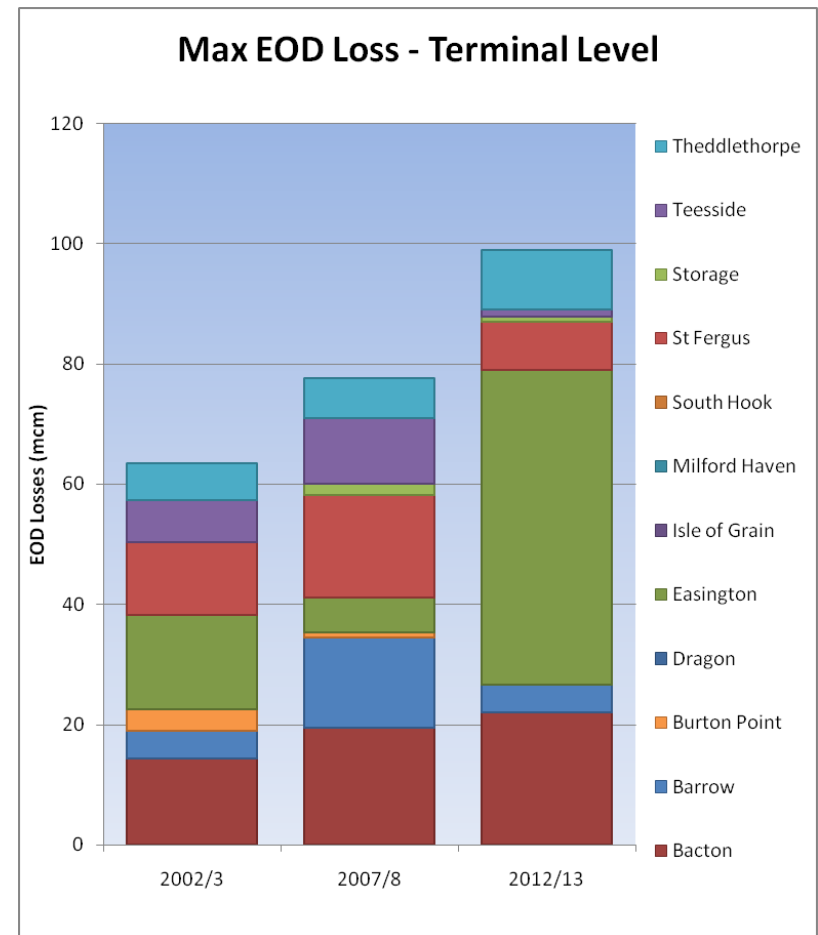
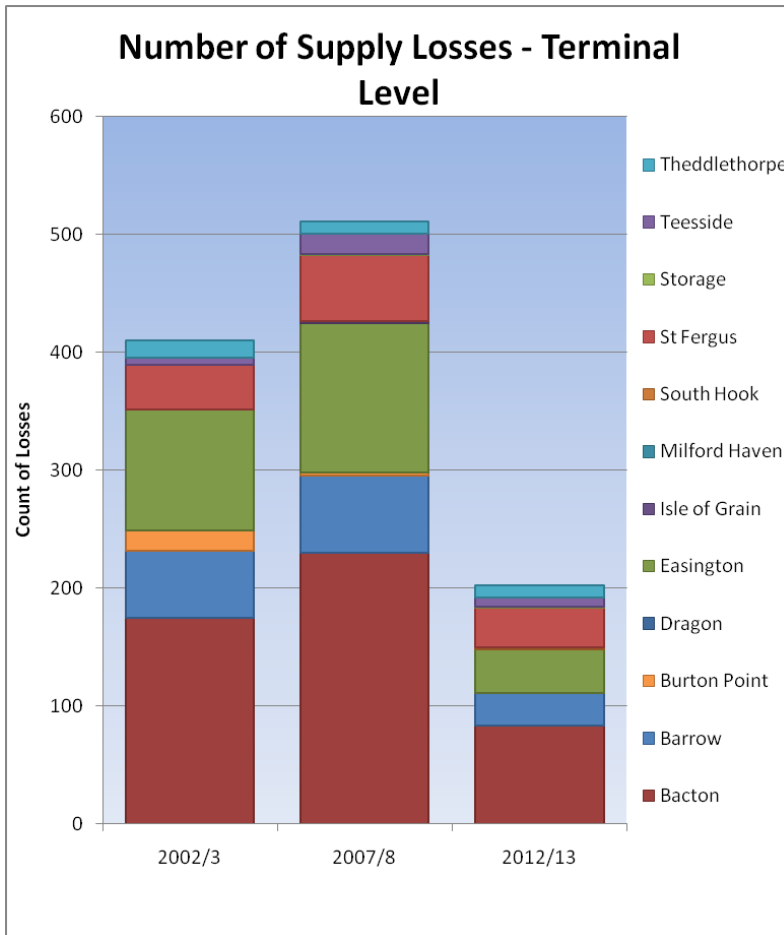
	2002/03	2007/08	2012/13	2013/14	Oct 2013	Nov 2013	Dec 2013	Jan 2014
<b>Max Range</b>	20.52	19.51	31.77	30.81	22.03	30.81	28.93	27.99
<b>Min Range</b>	0.92	1.06	2.47	2.51	2.51	9.01	10.03	11.08
<b>Average Range</b>	6.58	8.19	13.42	16.73	12.02	18.14	18.39	18.75
<b>Max Swing</b>	18.92	18.73	29.86	27.35	20.53	25.65	27.19	27.35
<b>Min Swing</b>	0.00	0.00	0.01	0.00	0.00	6.23	6.47	9.56
<b>Average Swing</b>	4.58	6.61	11.76	15.35	10.61	16.63	16.99	17.55

# Time of Day Linepack Swing

## Time of Minimum Actual Linepack



# Supply Shocks



# Risks

---

Increased levels of linepack swing occurring late in the gas day leaves the NTS at a greater risk from high volume supply shocks

These may lead to an increase in System Management actions and impact the ability to meet end of day requirements

Options:

1. Proactively manage Linepack Swing by working collaboratively with Customers
2. Increase in Constraint Management and Balancing Actions

# Impact of Supply Shock on Linepack

