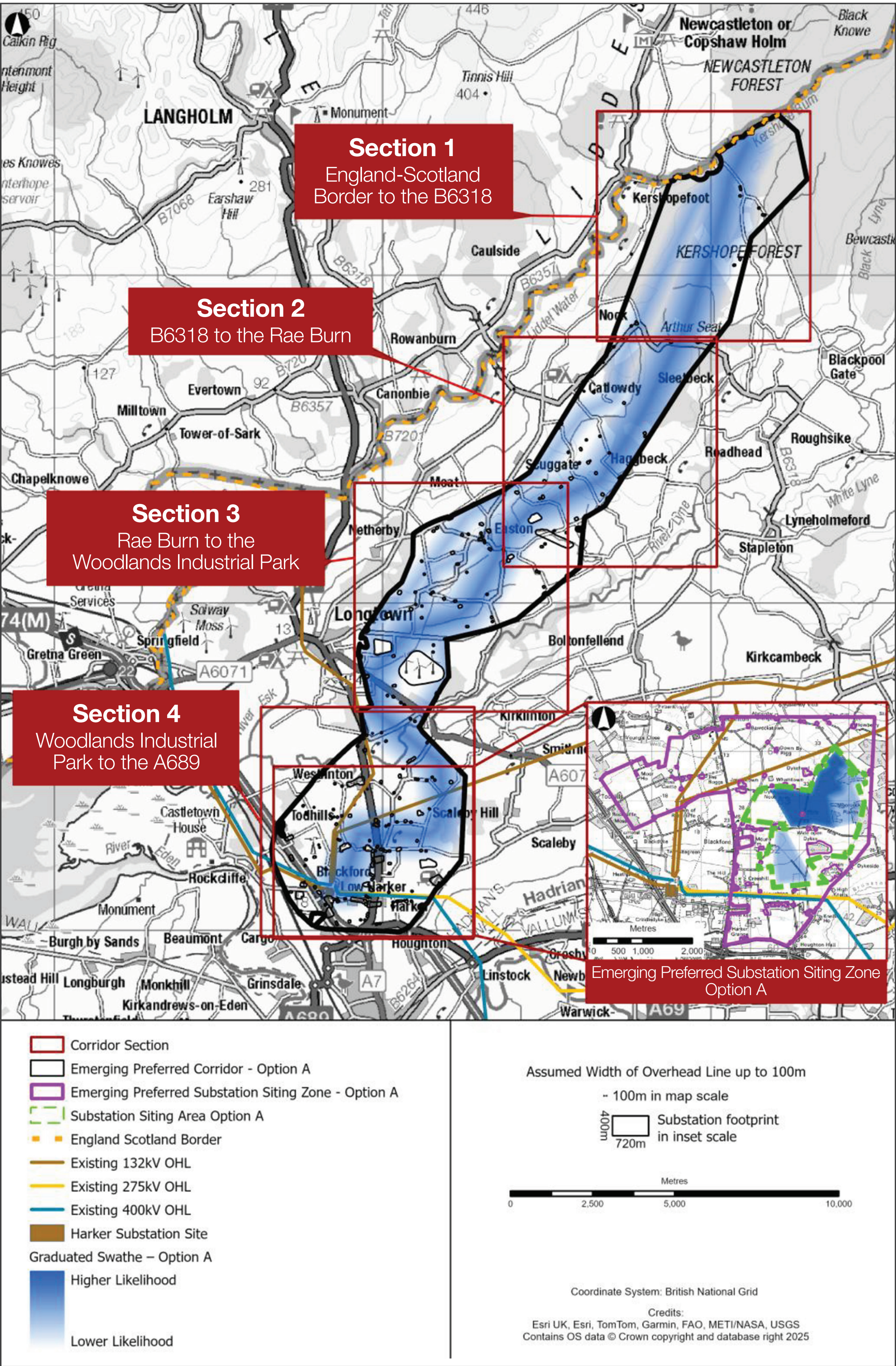


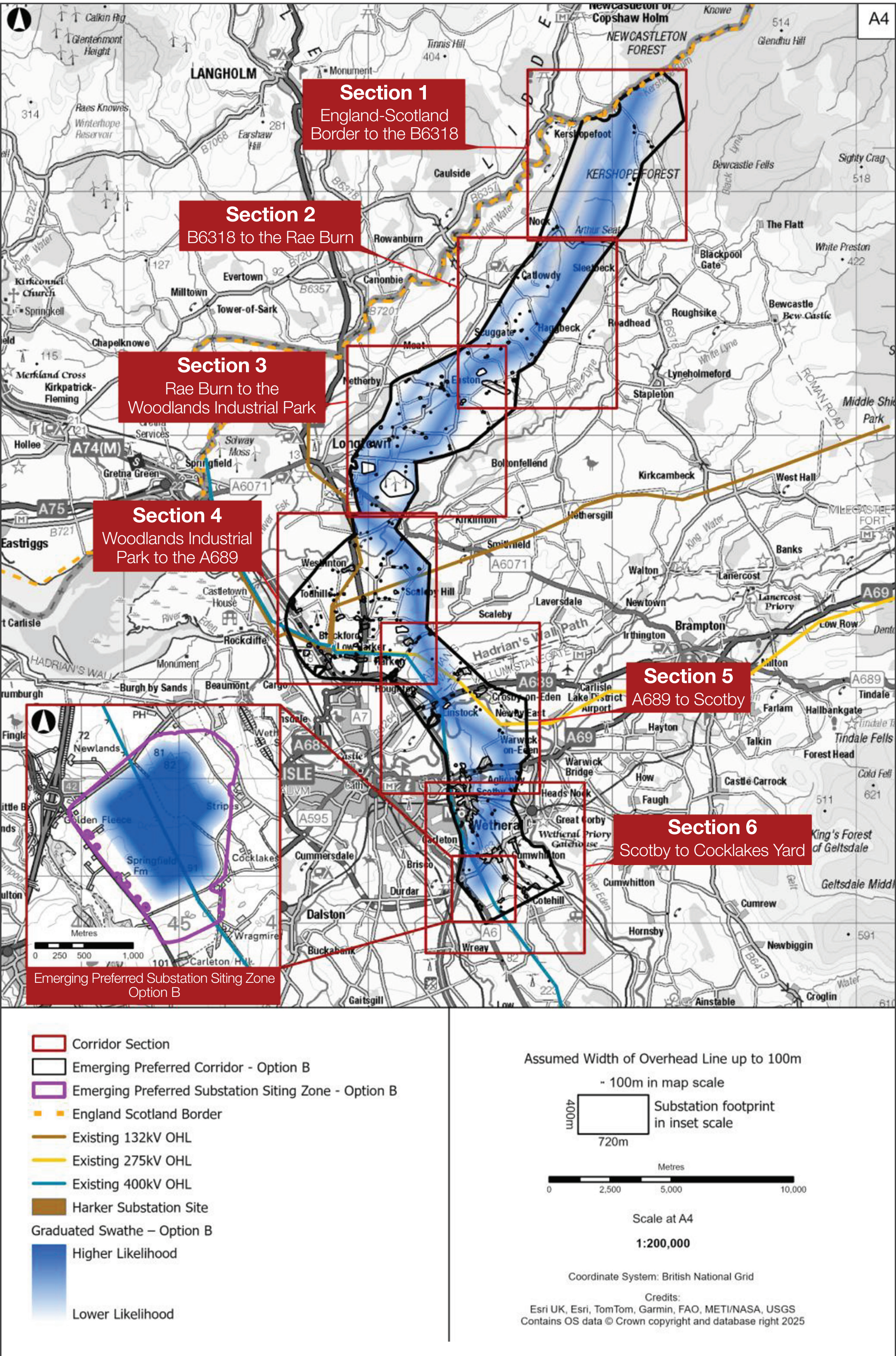
Overview of our proposals in England

Option A – north of Carlisle



Overview of our proposals in England

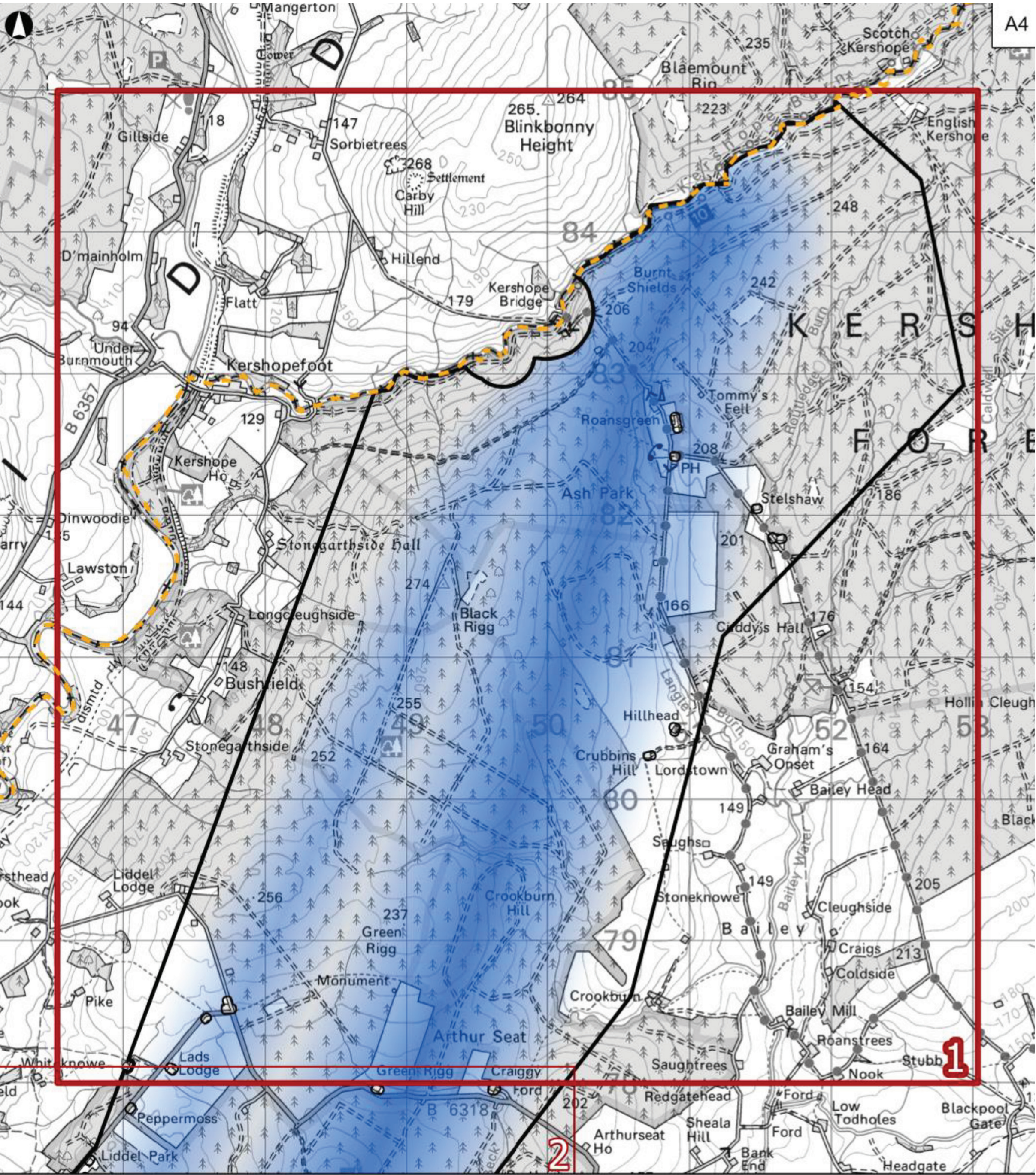
Option B – south of Carlisle



Core Route Options

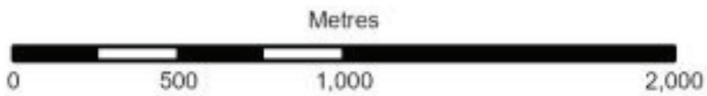
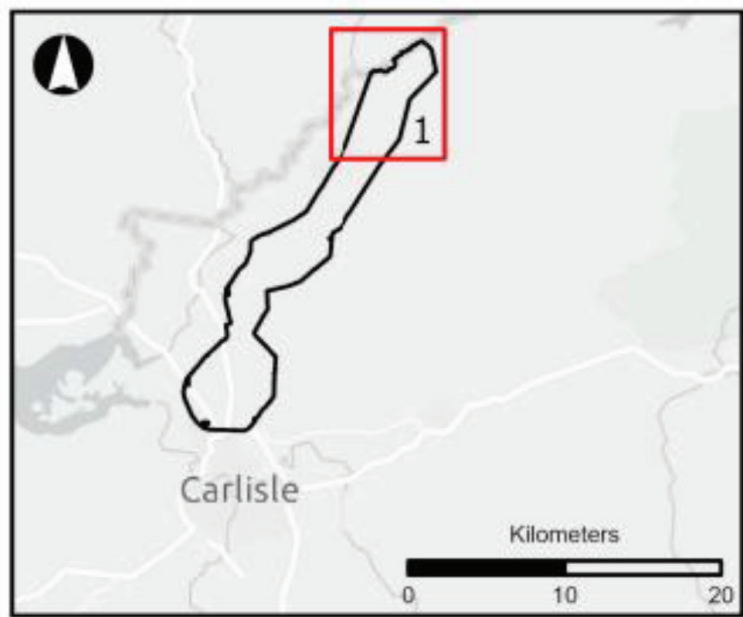
Route section 1: England-Scotland Border to B6318

Sections 1 – 3 of the overhead line route for Options A and B are identical.



- Corridor Section
- Emerging Preferred Corridor - Option A
- England Scotland Border
- Overhead Line Graduated Swathe – Option A
- Higher Likelihood
- Lower Likelihood

Assumed Width of Overhead Line up to 100m
100m in map scale



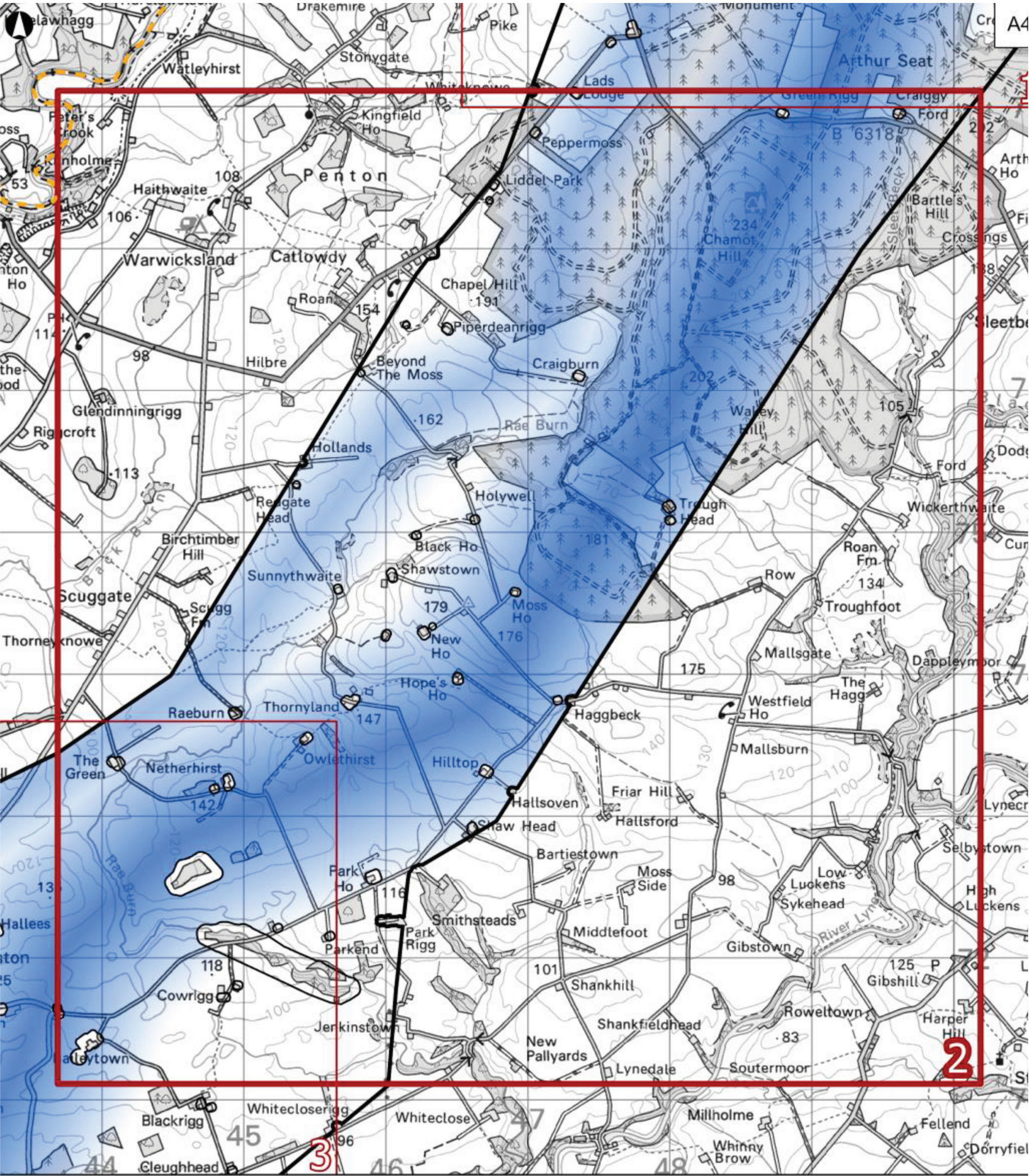
Scale at A4
1:40,000

Coordinate System: British National Grid
Credits:
Esri UK, Esri, TomTom, Garmin, FAO, METI/NASA, USGS
Contains OS data © Crown copyright and database right 2025

Core Route Options

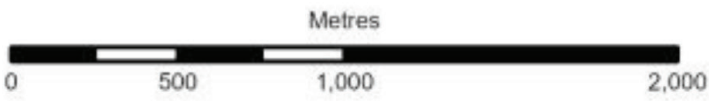
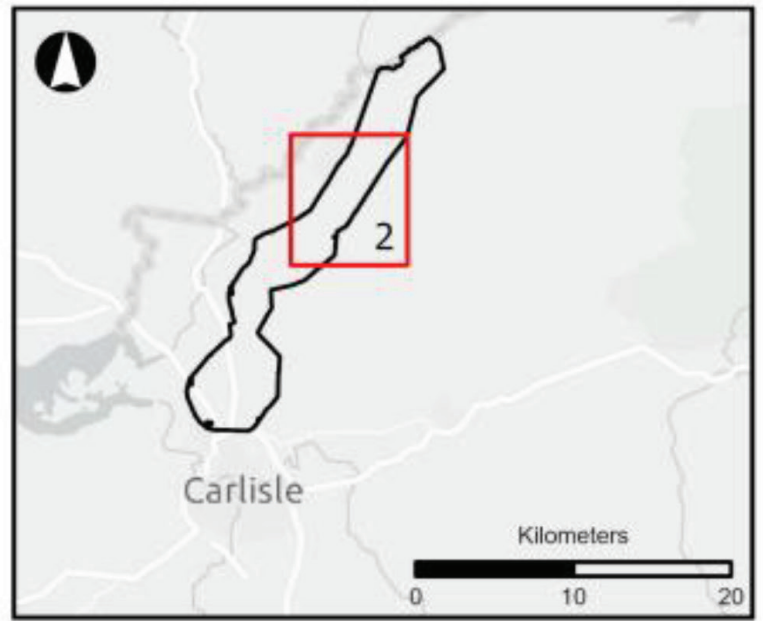
Route section 2: B6318 to Rae Burn

Sections 1 – 3 of the overhead line route for Options A and B are identical.



- Corridor Section
- Emerging Preferred Corridor - Option A
- England Scotland Border
- Overhead Line Graduated Swathe – Option A
- Higher Likelihood
- Lower Likelihood

Assumed Width of Overhead Line up to 100m
100m in map scale



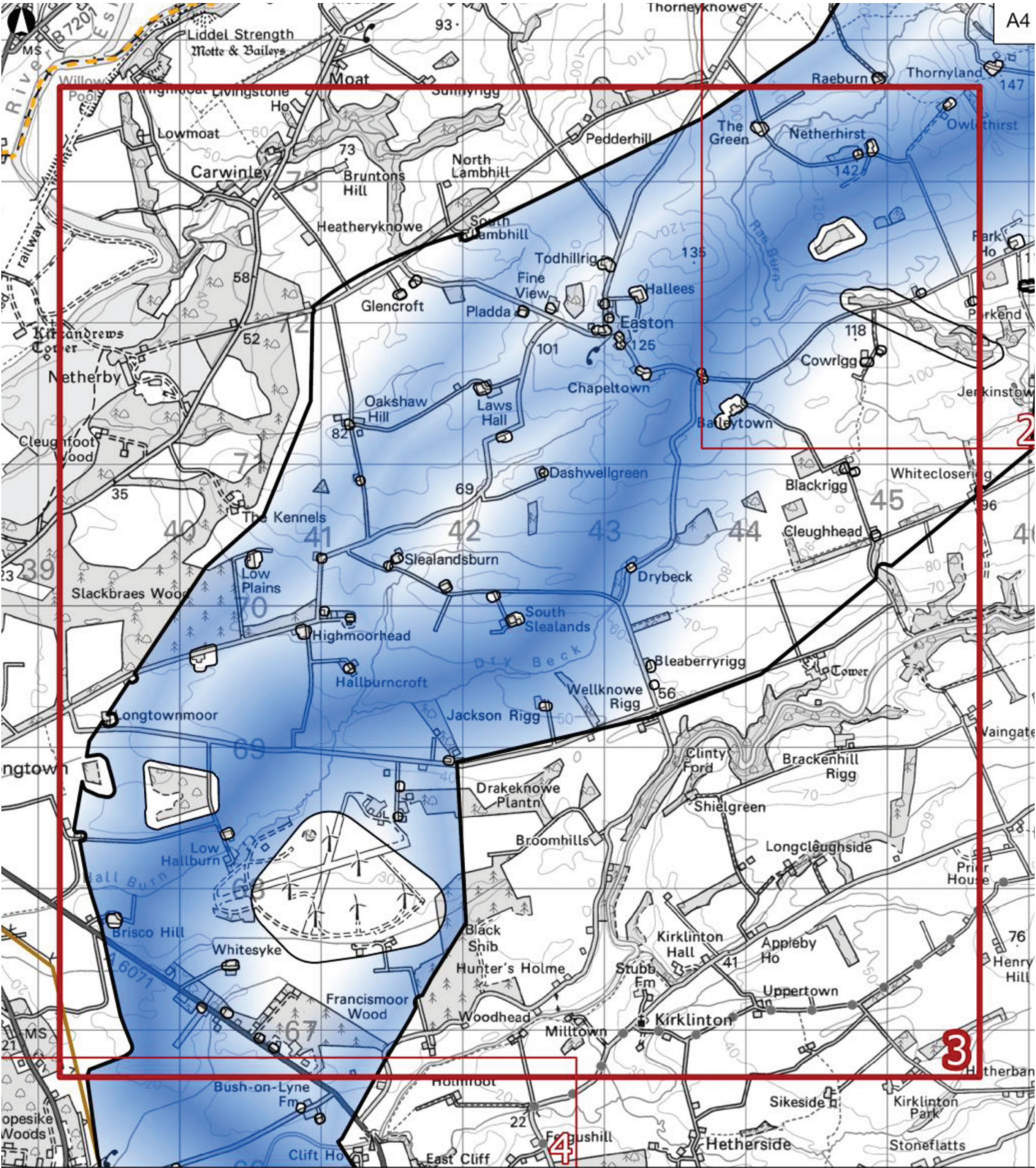
Scale at A4
1:40,000

Coordinate System: British National Grid
Credits:
Esri UK, Esri, TomTom, Garmin, FAO, METI/NASA, USGS
Contains OS data © Crown copyright and database right 2025

Core Route Options

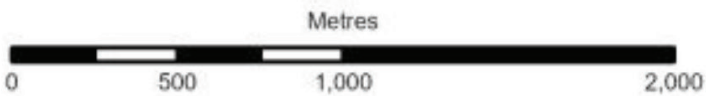
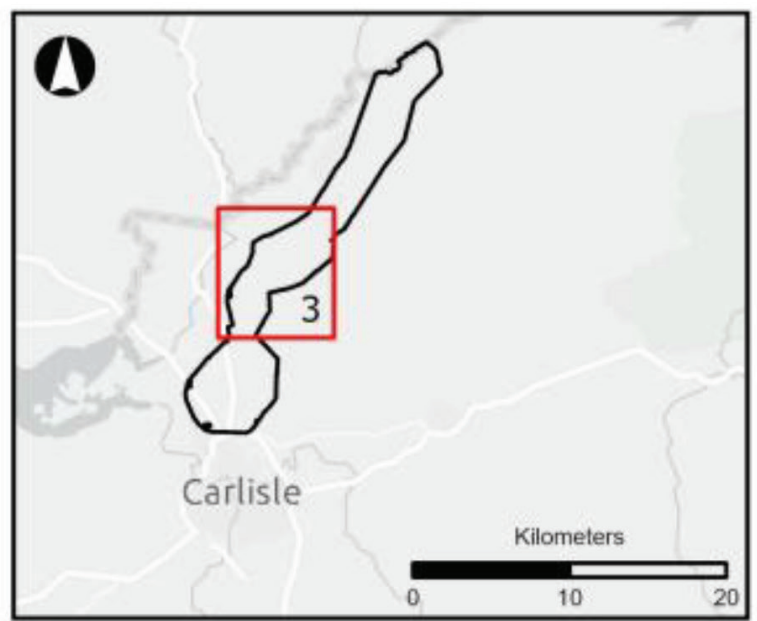
Route section 3: Rae Burn to Woodlands Industrial Park

Sections 1 – 3 of the overhead line route for Options A and B are identical.



- Corridor Section
- Emerging Preferred Corridor - Option A
- England Scotland Border
- Existing 132kV OHL
- Overhead Line Graduated Swathe – Option A
- Higher Likelihood
- Lower Likelihood

Assumed Width of Overhead Line up to 100m
100m in map scale



Scale at A4
1:40,000

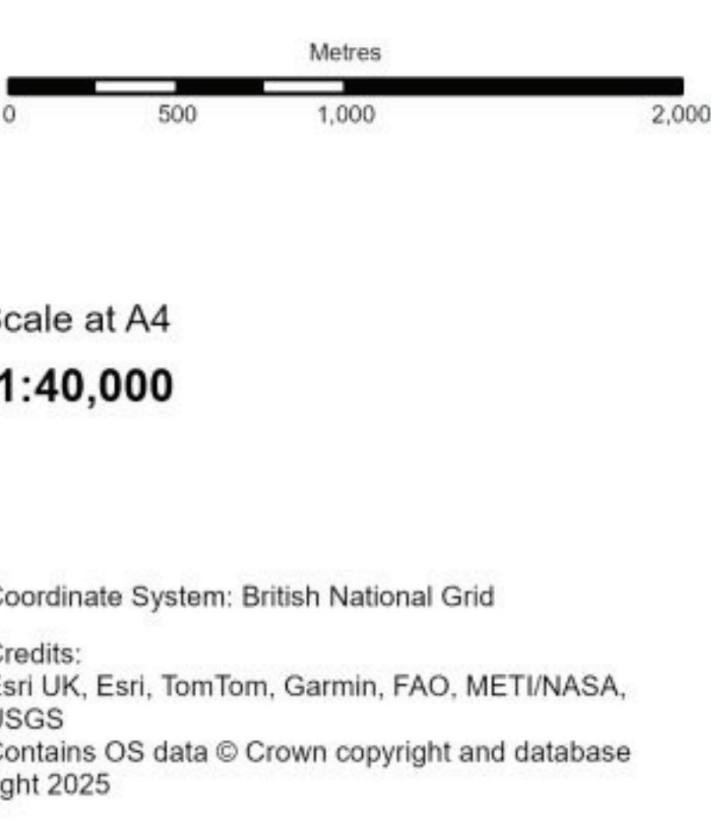
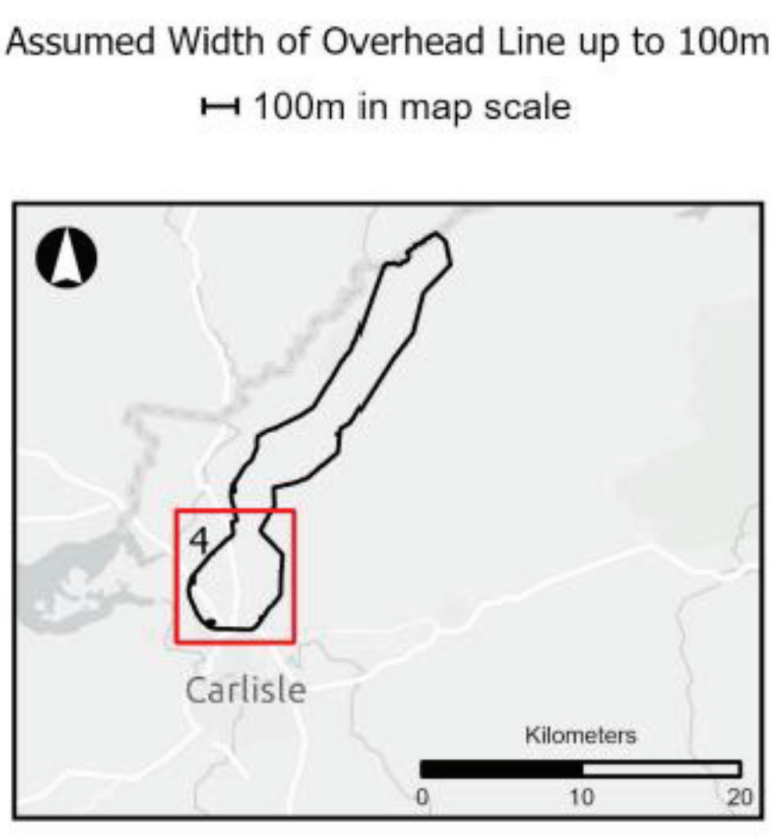
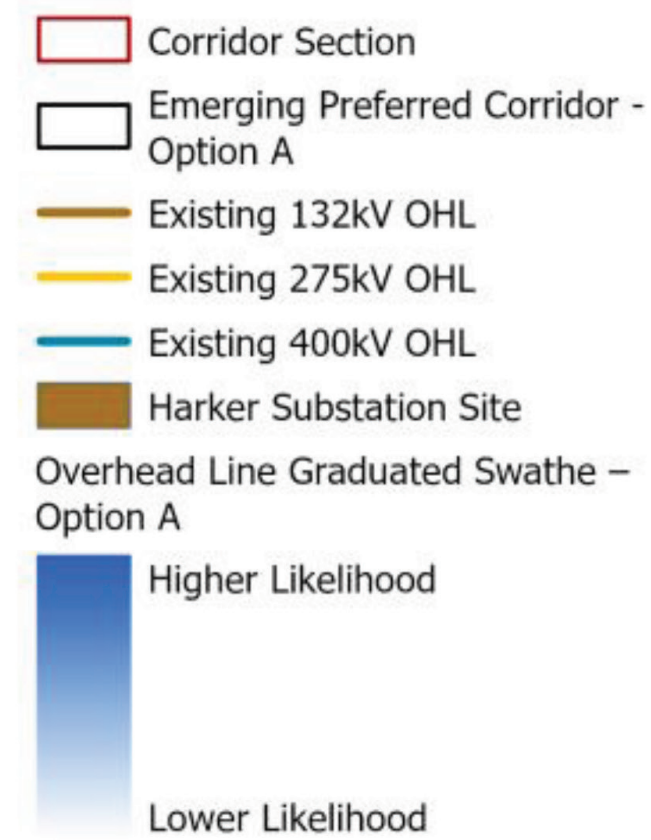
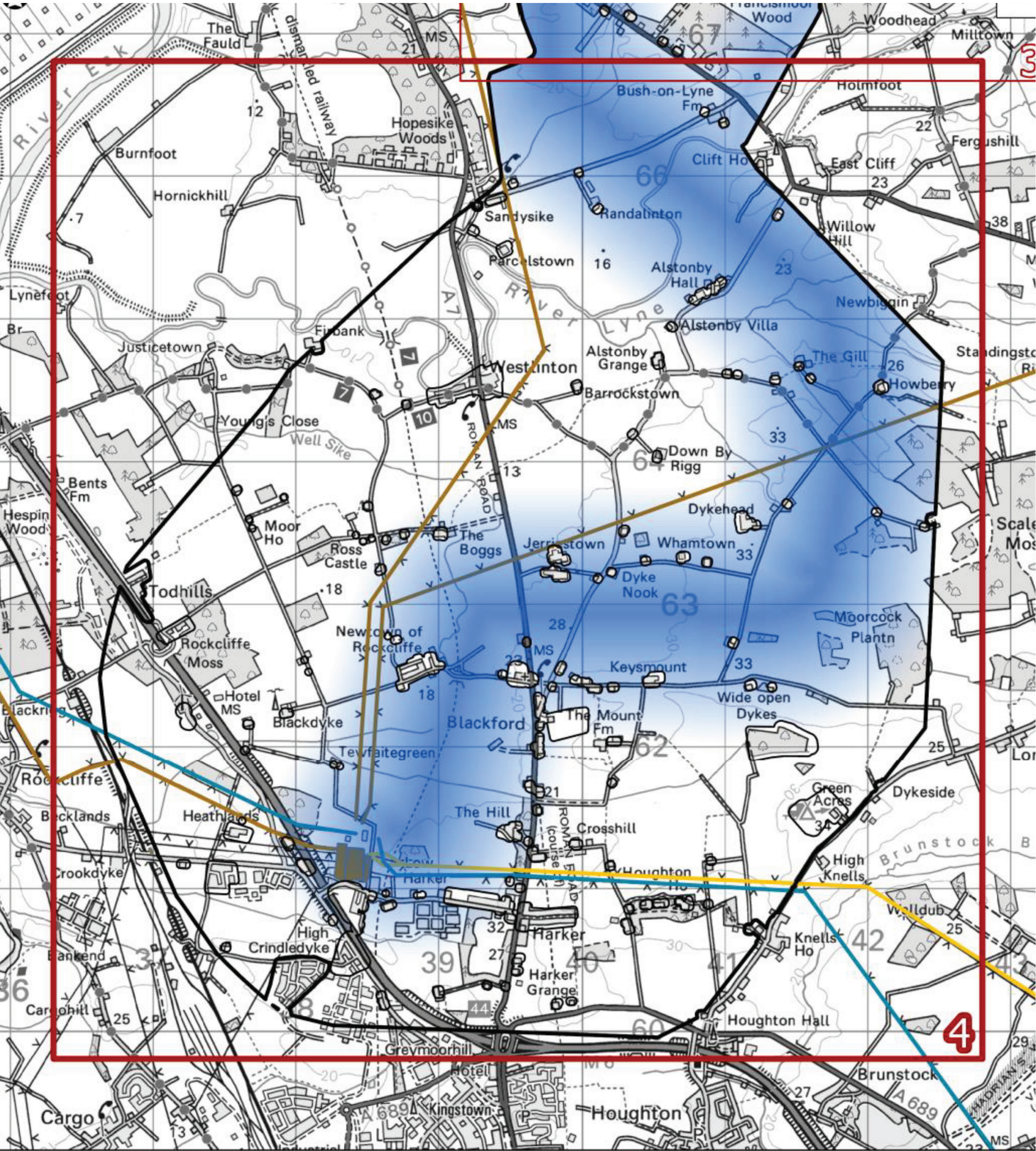
Coordinate System: British National Grid

Credits:
Esri UK, Esri, TomTom, Garmin, FAO, METI/NASA, USGS
Contains OS data © Crown copyright and database right 2025

Option A – north of Carlisle

Route section 4: Woodlands Industrial Park to A689

Section 4 of the overhead line route for Option A is different to section 4 of Option B.



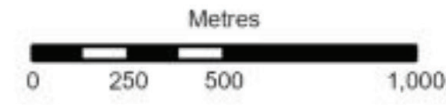
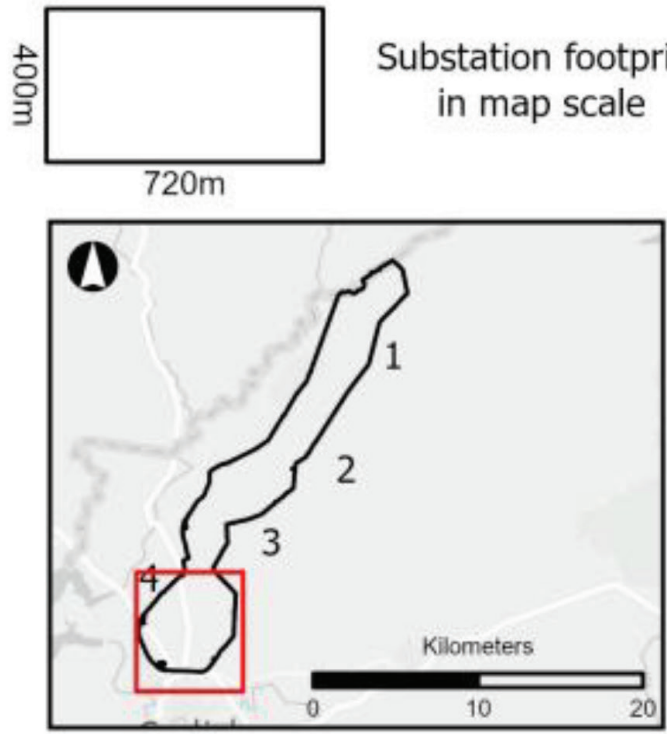
Option A – north of Carlisle

North of Carlisle substation



- Emerging Preferred Substation Siting Zone - Option A
- Substation Siting Area Option A
- Existing 132kV OHL
- Existing 275kV OHL
- Existing 400kV OHL
- Harker Substation Site
- Substation Graduated Swathe – Option A
- Higher Likelihood
- Lower Likelihood

Substation footprint within graduated swathe is approximately 288,000m²

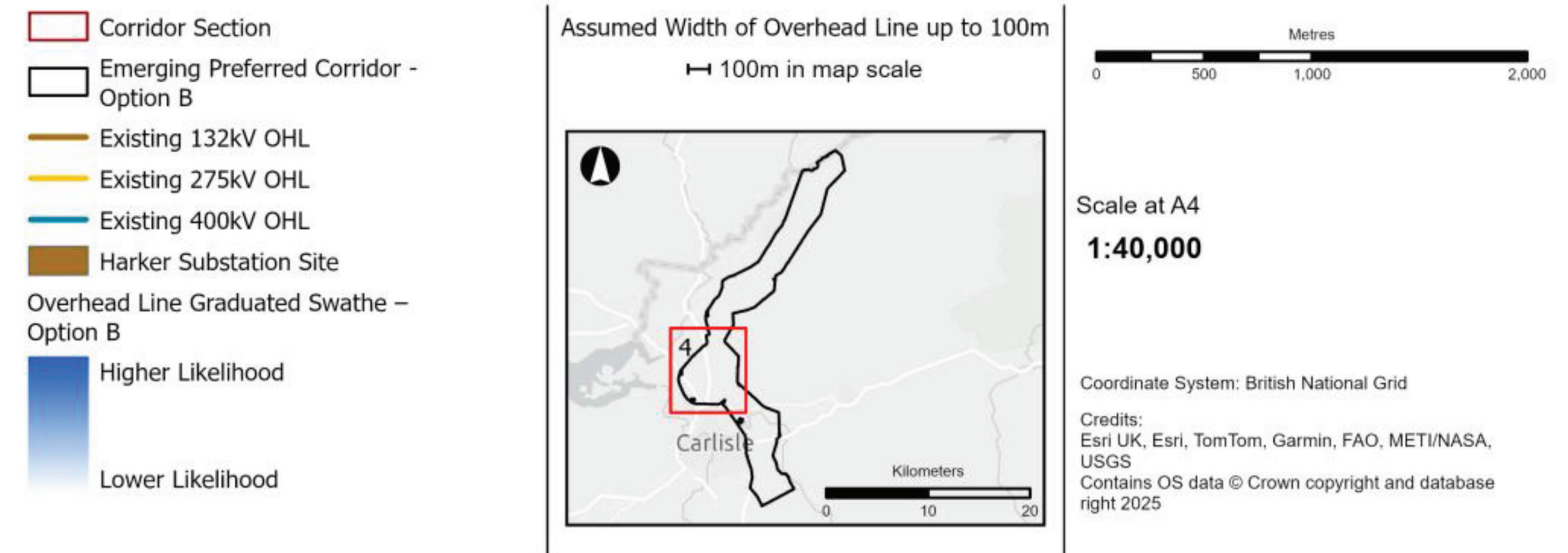
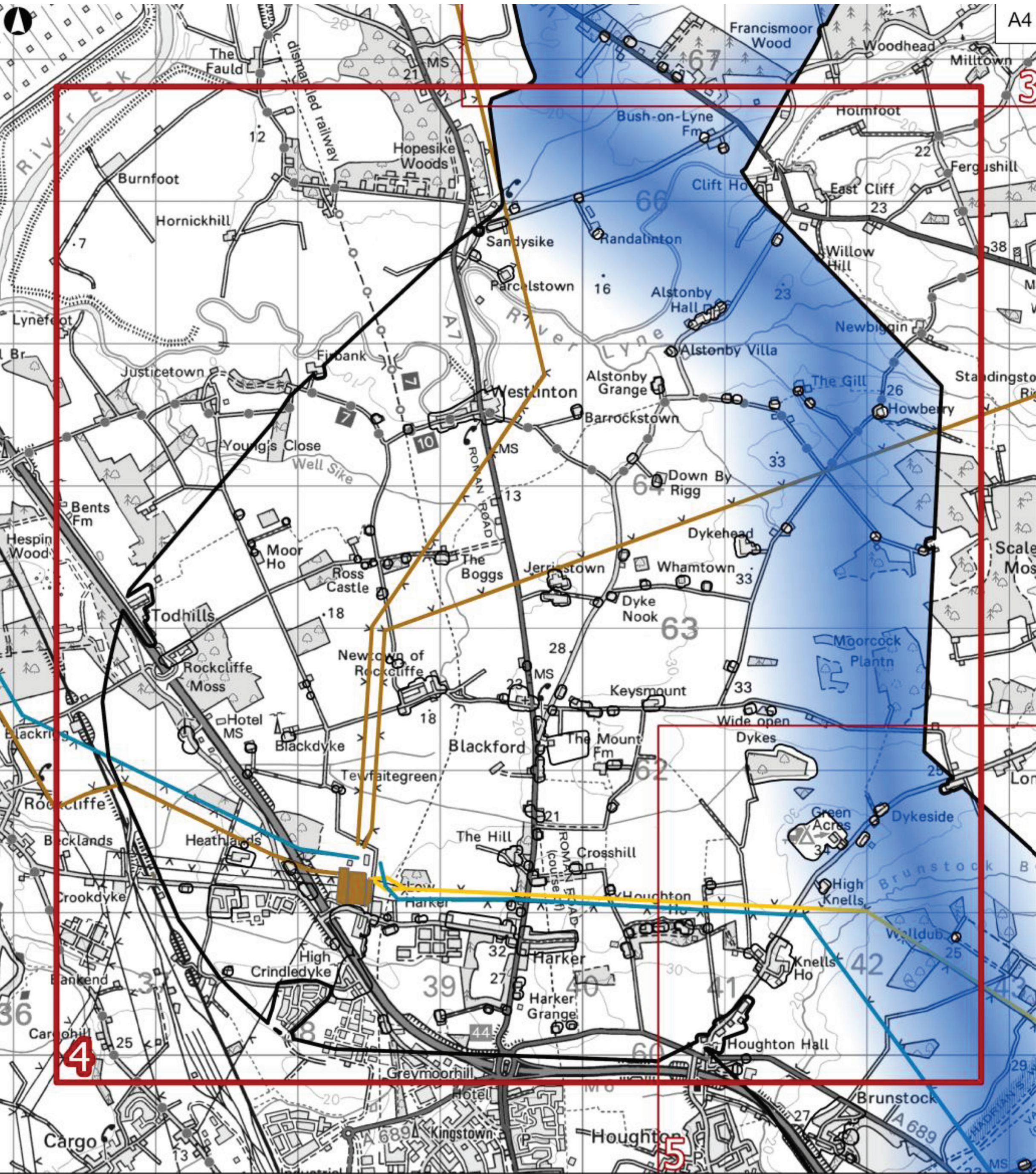


Coordinate System: British National Grid
Credits: Esri UK, Esri, TomTom, Garmin, FAO, METI/NASA, USGS
Contains OS data © Crown copyright and database right 2025

Option B – south of Carlisle

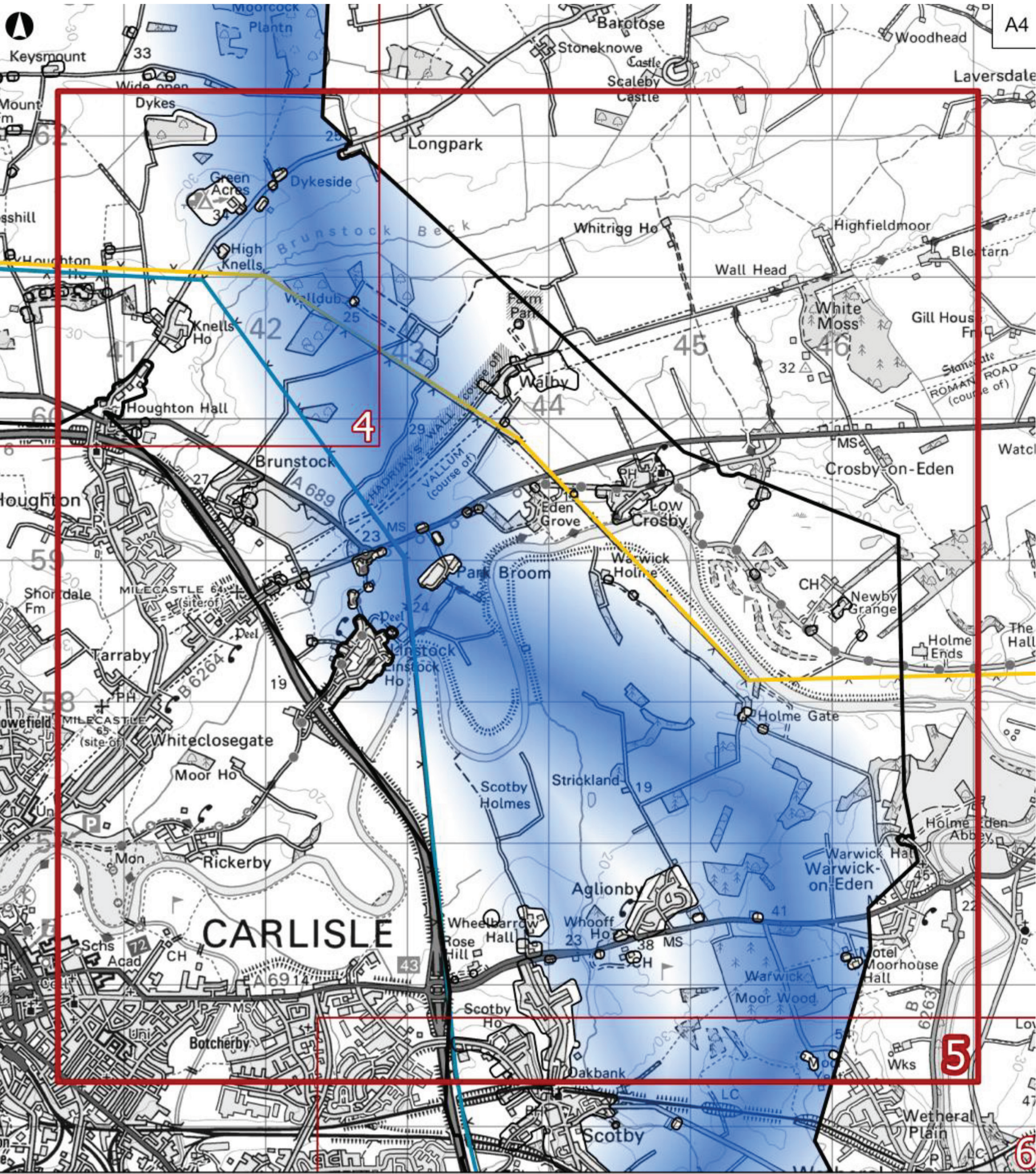
Route section 4: Woodlands Industrial Park to A689

Section 4 of the overhead line route for Option B is different to section 4 of Option A.



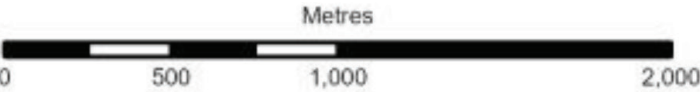
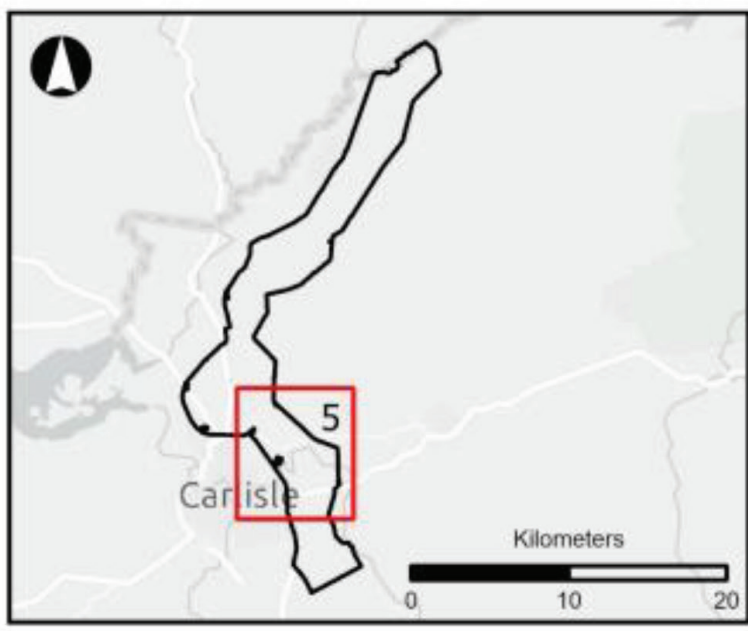
Option B – south of Carlisle

Route section 5: A689 to Scotby



- Corridor Section
- Emerging Preferred Corridor - Option B
- Existing 275kV OHL
- Existing 400kV OHL
- Overhead Line Graduated Swathe – Option B
- Higher Likelihood
- Lower Likelihood

Assumed Width of Overhead Line up to 100m
100m in map scale

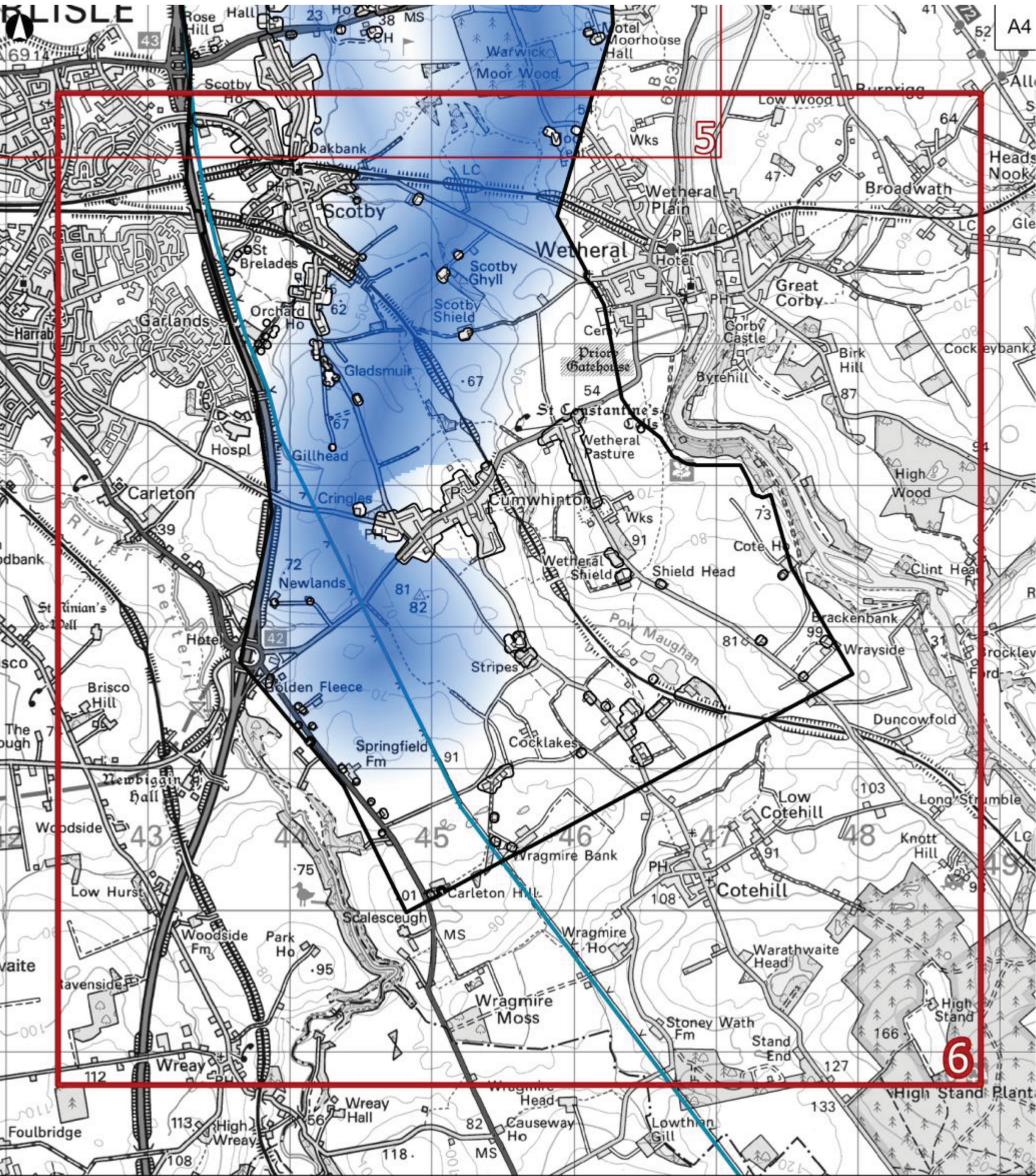


Scale at A4
1:40,000

Coordinate System: British National Grid
Credits:
Esri UK, Esri, TomTom, Garmin, FAO, METI/NASA, USGS
Contains OS data © Crown copyright and database right 2025

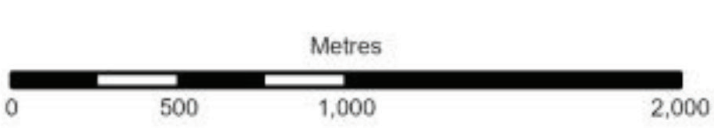
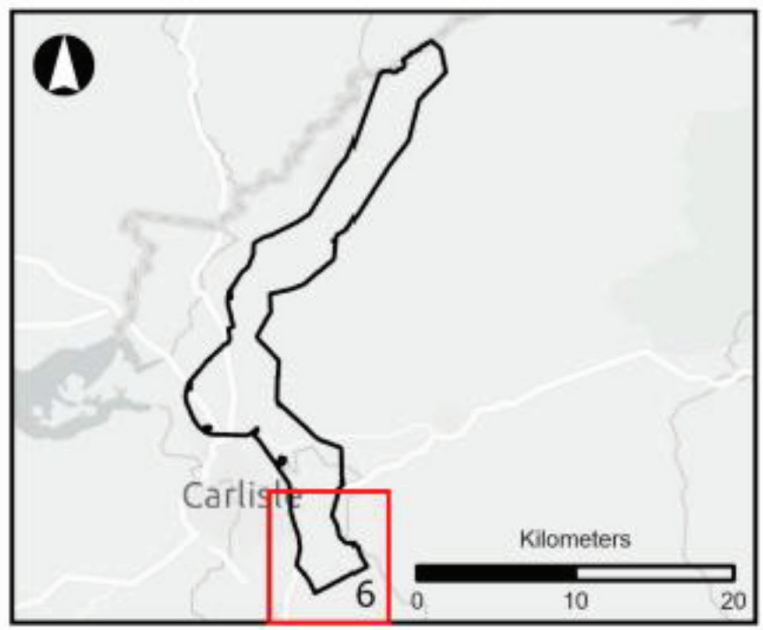
Option B – south of Carlisle

Route section 6: Scotby to Cocklakes Yard



- Corridor Section
- Emerging Preferred Corridor - Option B
- Existing 400kV OHL
- Overhead Line Graduated Swathe – Option B
- Higher Likelihood
- Lower Likelihood

Assumed Width of Overhead Line up to 100m
100m in map scale

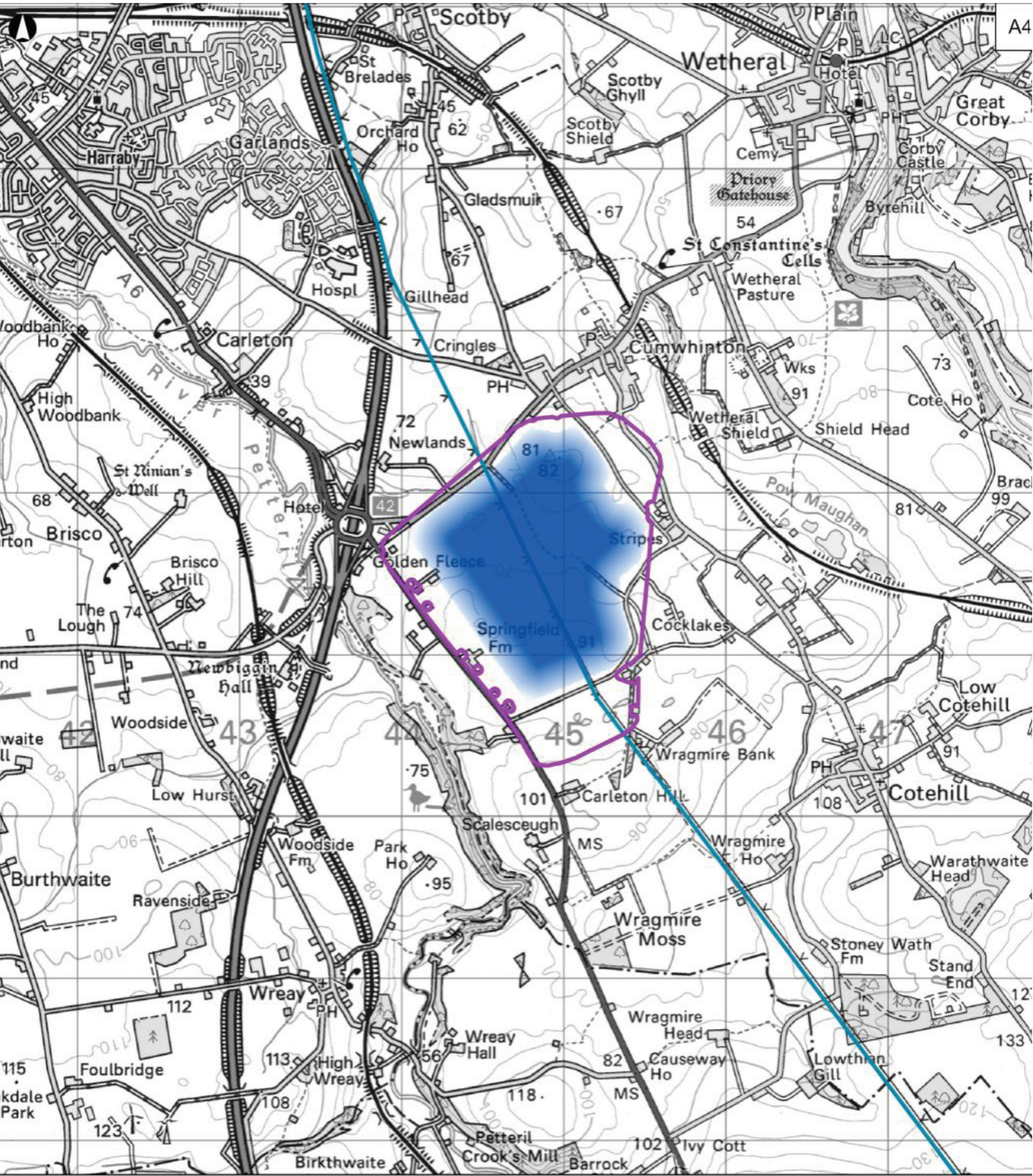


Scale at A4
1:40,000

Coordinate System: British National Grid
Credits:
Esri UK, Esri, TomTom, Garmin, FAO, METI/NASA, USGS
Contains OS data © Crown copyright and database right 2025

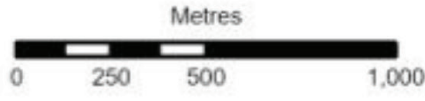
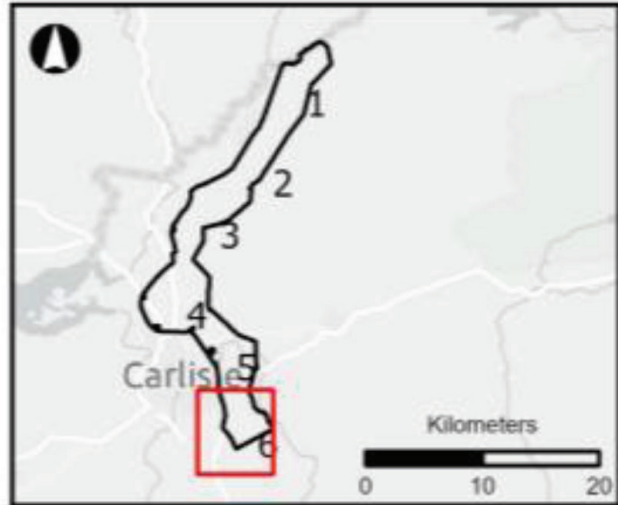
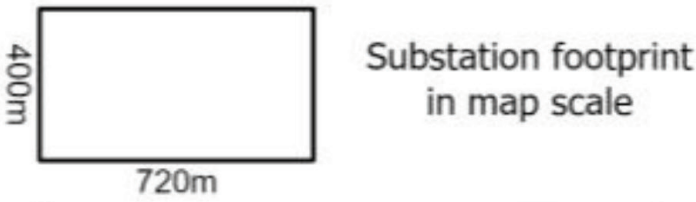
Option B – south of Carlisle

South of Carlisle substation



- Emerging Preferred Substation Siting Zone - Option B
- Existing 400kV OHL
- Substation Graduated Swathe – Option B
- Higher Likelihood
- Lower Likelihood

Substation footprint within graduated swathe is approximately 288,000m²



Scale at A4

1:35,000

Coordinate System: British National Grid

Credits:
Esri UK, Esri, TomTom, Garmin, FAO, METI/NASA, USGS
Contains OS data © Crown copyright and database right 2025