



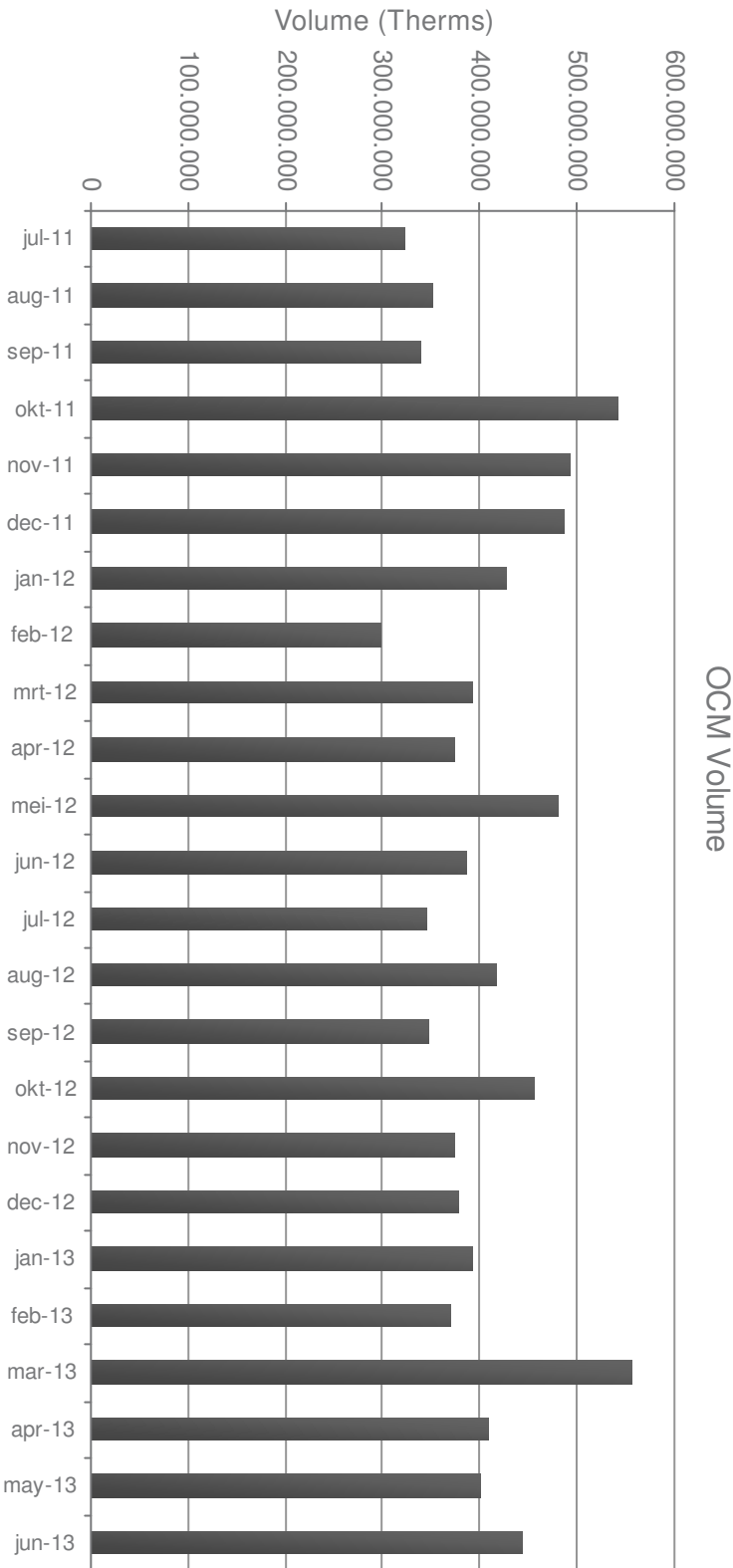
# ICE Endex UK Gas update

July 2013, London

# Volumes per month since July 2011

Average monthly volume:

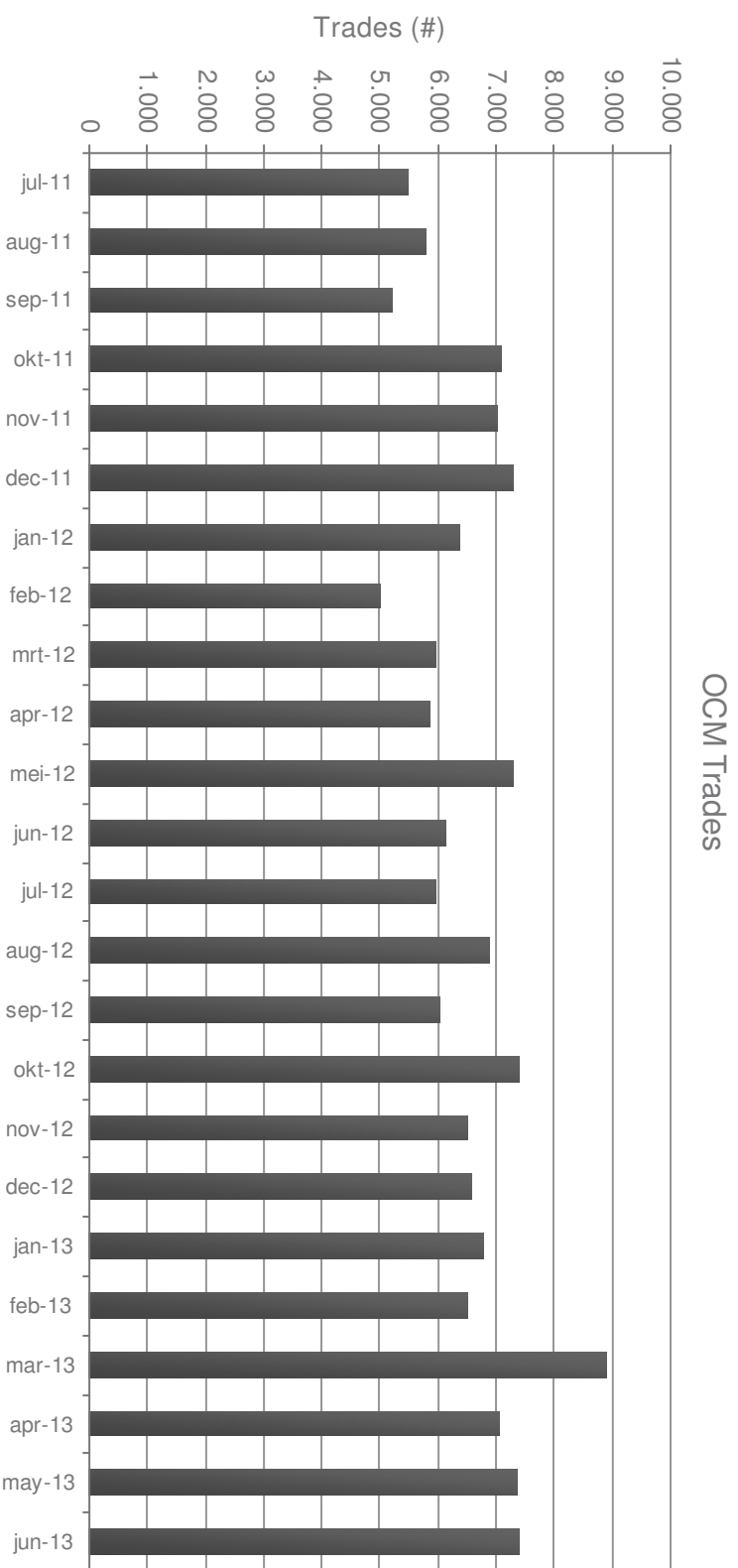
408,419,625



ICE Endex

# Trades per month since July 2011

Average monthly number of trades: 6,590



ICE Endex

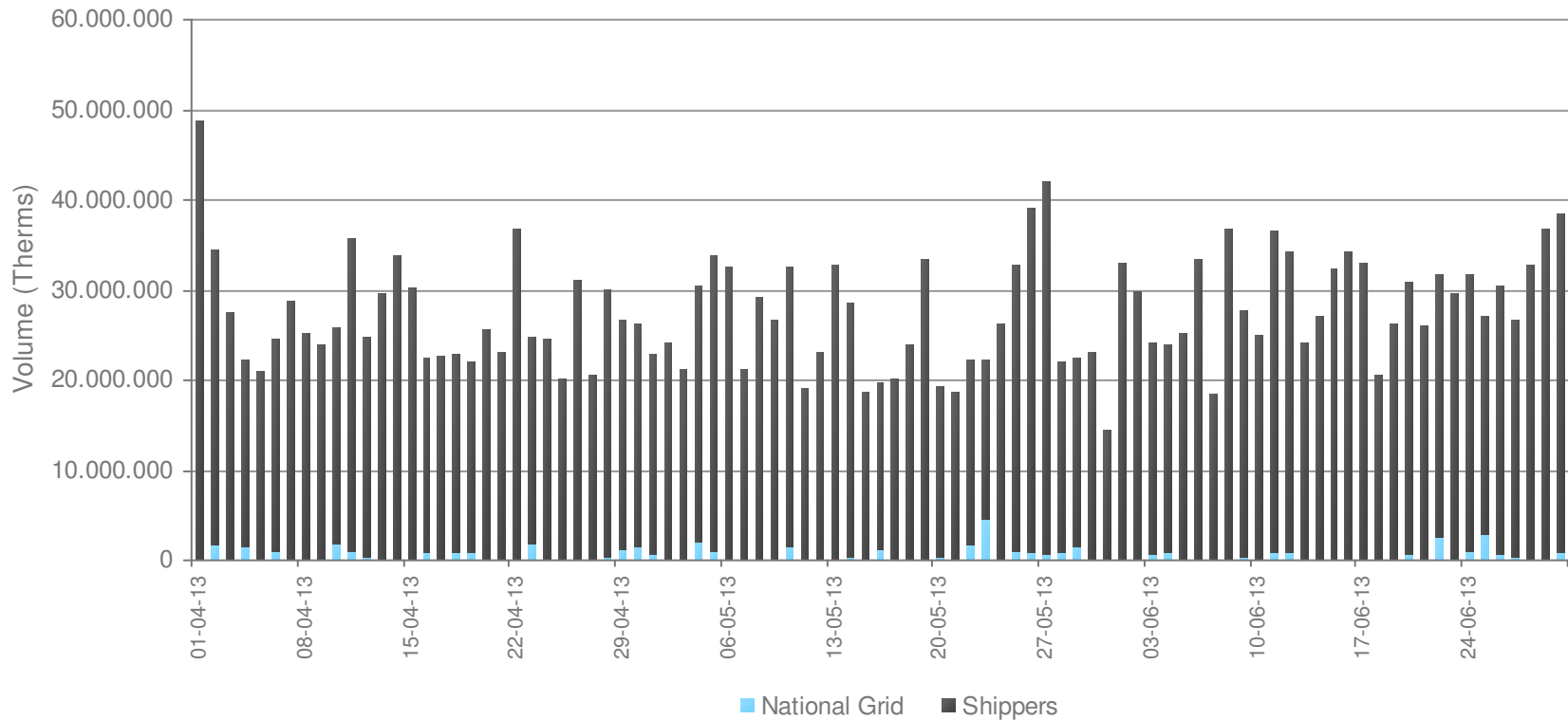
# Daily volumes Q2 2013

Shippers % share of volume: 98.1%  
 NGC % share of volume: 1.9%

Response to questions from audience during NGG OPS Forum (10-7-10213)

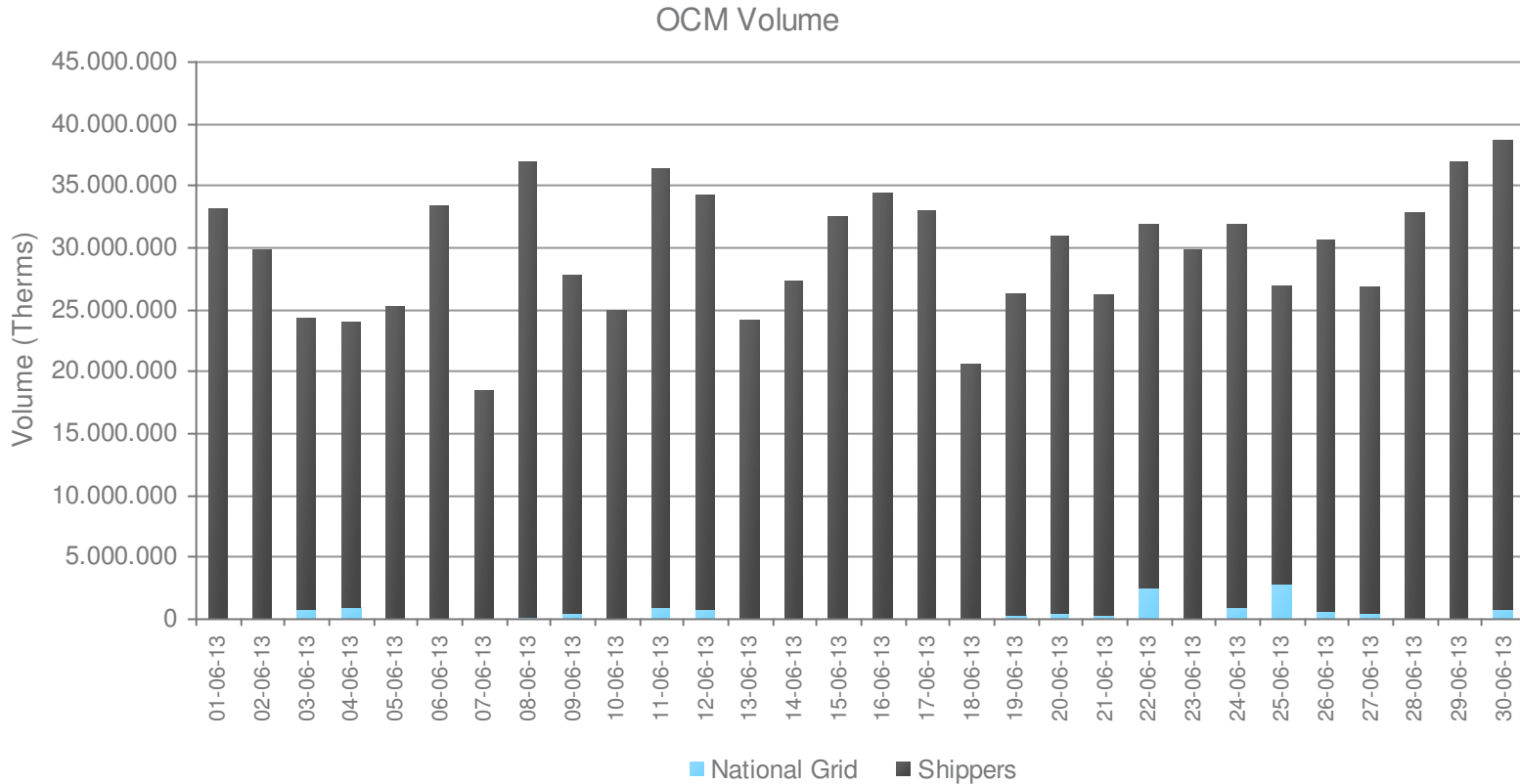
-Number of members has decreased by 2 since 1 January 2013 now totaling 71 trading members. One new shipper signed up for the OCM and three existing member cancelled their membership.  
 The number of active members per month: **Jan – 64, Feb – 63, Mar – 62, Apr – 62, May – 66, Jun – 64.**

OCM Volume



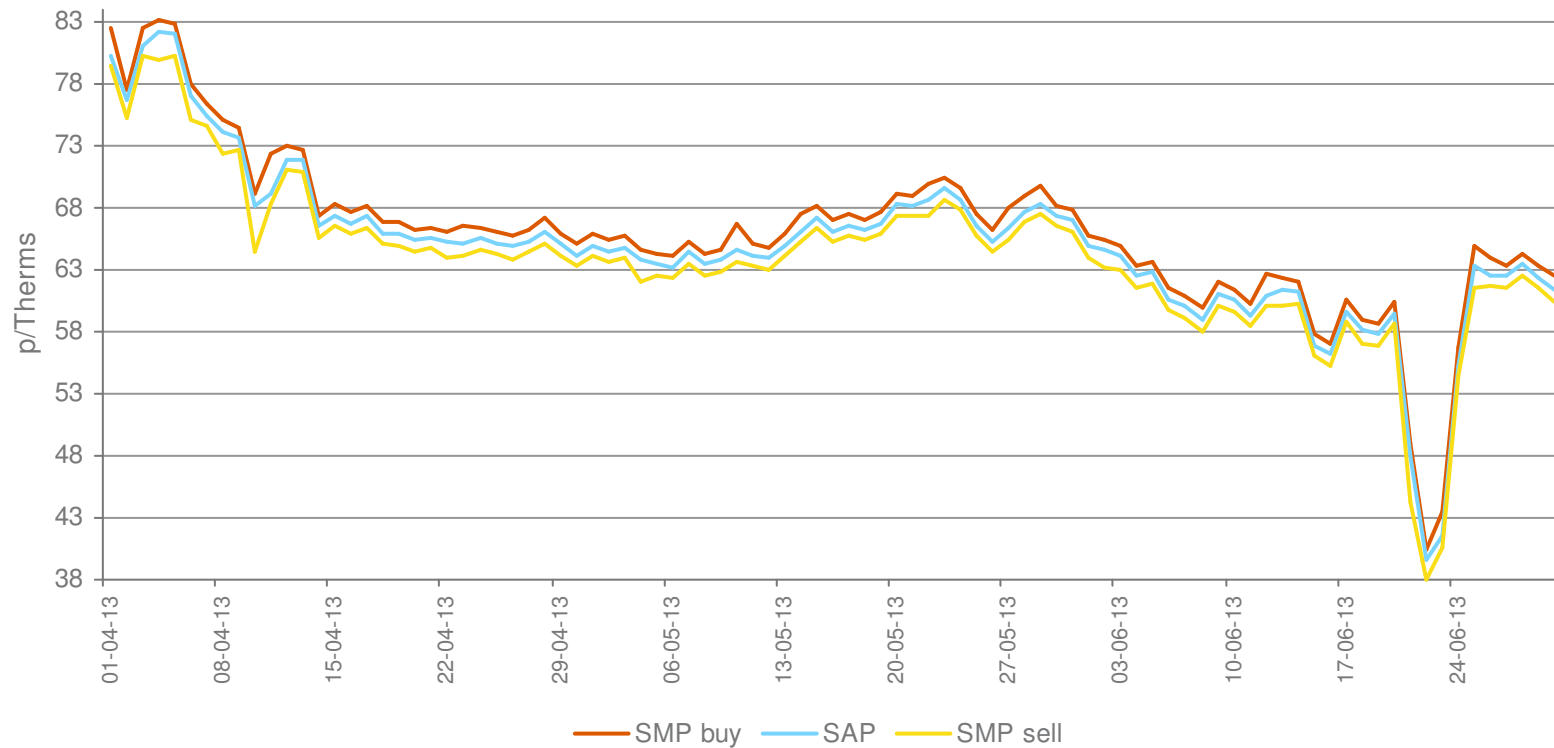
# Volumes June 2013

Highest volume: 19,306,000 (30 June)  
 Lowest volume: 9,238,000 (7 June)  
 Average total daily vol: 14,845,967  
 NGC share of volume: 1.51%



# Q2 2013 Daily SAP/SMP prices

Highest SMP buy:	83.15 p/th (4 Apr)	Lowest SMP buy:	40.50 p/th (22 Jun)
Highest SAP:	82.26 p/th (4 Apr)	Lowest SAP:	39.62 p/th (22 Jun)
Highest SMP sell:	80.30 p/th (5 Apr)	Lowest SMP sell:	38.00 p/th (22 Jun)



## Points of interest

### Response to questions from audience during NGG OPS Forum (10-7-10213)

-Number of members has decreased by 2 since 1 January 2013 now totaling 71 trading members. One new shipper signed up for the OCM and three existing member cancelled their membership.  
-The number of active members: Jan – 64, Feb – 63, Mar – 62, Apr – 62, May – 66, Jun – 64.

### > EuroLight® 6 Upgrade

- As communicated in a Member Update on 10 April 2013, a mandatory upgrade of the EuroLight client will take place later this year.
- The planned date for the launch of the new EuroLight 6 version is Tuesday 27 August 2013.
- Member testing will be possible from Monday 8 July to Friday 16 August 2013.

### > SDK license expires

- The Trayport SDK license expires at the end of September. From 1 October 2013 the OCM can only be traded on EuroLight®.
- ICE Endex will ensure SDK compatibility with EuroLight® for members who want to use Trayport's GlobalVision Gateway for trading the OCM for the period between the upgrade the expiry of the SDK license.

### > Migration to WebICE

- The OCM market will be made available for trading on WebICE and front-end systems offered by ISVs. The migration is expected to take place during the first half of 2014.
- Market parties are invited to join the OCM Focus Group who will provide input for the migration plan.



# Thank you

#### DISCLAIMER

The information contained in this document ("Presentation") has been prepared by ICE Endex and is subject to change without notice. Copyright and intellectual property right protection exists in this Presentation and it may not be reproduced, distributed or published with any third party, in whole or in part, without the express prior written permission from ICE Endex. All rights are reserved. While reasonable care has been taken to ensure that the information contained herein is true and accurate, ICE Endex makes no representation to its correctness, reliability or completeness including likelihood of achievement or reasonableness of any forecasts, prospects, returns or statements in relation to future matters that may be contained in this Presentation. Neither ICE Endex nor any of its directors or employees accepts any liability in respect of the information contained in the Presentation or for any loss arising from the use of this Presentation, its contents or otherwise arising in connection with it. This Presentation does not constitute an offer, invitation or recommendation to any transaction and neither is it to be taken as any form of commitment on the part of ICE Endex to proceed with any transaction.