

London Power Tunnels

Bengeworth Road
Community Liaison Group
meeting #8

8 March 2022

nationalgrid



01

Introductions

nationalgrid



Meet the team

Mark Farmer, Project Manager, National Grid

Sarah Harris, External Affairs Manager, National Grid

Tony Markwick, Markwick Architects

Phoebe Adams, Stakeholder Engagement and Communications Manager, UK Power Networks

Andrew White, Project Manager, UK Power Networks

Joe Cawley, Director, Grayling

Housekeeping

- Everyone has the function to have videos on – please let us know if not.
- We kindly request you remain on mute until you speak or want to ask a question – this helps to minimise echoing on the call and prevents talking over each other.
- Please use the raise hand function to ask any questions.
- Feel free to use the chat function to make any general comments.
- If you would rather ask your question anonymously, feel free to email us on nationalgrid@londonpowertunnels.co.uk
- We will be recording the session for **internal purposes only** to ensure we capture all the feedback and your comments. We will send through a copy of the minutes post-event.



02

This meeting



nationalgrid

What we want to cover today

1. **Site works update**
2. **UK Power Networks update**
3. **Public engagement for our substation and headhouse design**
4. **Outcome of feedback and chosen substation option**
5. **Next steps and timeline**
6. **Your questions and AOB**

03

Bengeworth Road site update

nationalgrid



Bengeworth Road site update

- For the next 4 months we are completing the shaft lining and constructing a dividing wall for the depth of the shaft.
- We are not planning to work beyond normal working hours.



03

UK Power Networks update

nationalgrid



UK Power Networks update

- We are currently in the early stages of assigning an architect/design consultant to work with us on finalising designs for the switchhouse building at Bengeworth Road.
- The application for permitted development for the switchhouse building will be submitted at the end of the summer 2022.
- UK Power Networks will be hosting public consultation events later on in the year to be able to provide the community with progress updates.
- Letter drops and other forms of communication will include contact details for UK Power Networks and these will go out once we have further updates.

04

**Public engagement
for our substation
and headhouse
design**

nationalgrid



Public engagement

- Throughout February, we shared our initial design options for our headhouse and substation and asked for your feedback on these.
- We held three online engagement events on Thursday 10 (4-7pm), Saturday 12 (10am – 1pm) and Thursday 17 February (4-7pm) to allow neighbours to join the event at a time that was convenient to them.
- Members of the community relations team were on hand to answer any questions through our live chat function.
- Outside of the events, the virtual designs were hosted on our website from 10 – 24 February for people to view in their own time.
- Several emails were sent to the Community Liaison Group signposting people to the virtual boards and encouraging people to share their feedback.
- We also offered everyone we contacted the option of booking a time with us to chat through the plans over the phone.

05

Outcome of
feedback and
chosen option

nationalgrid



Outcome of feedback

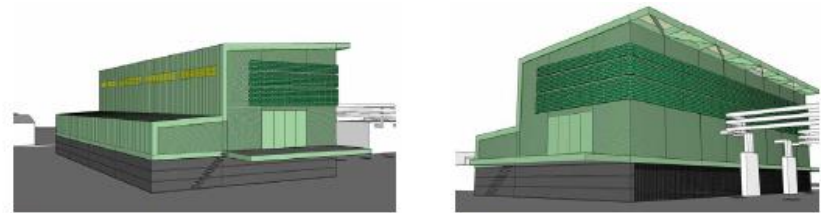
- Throughout the engagement period (10 – 24 Feb), we had 224 visitors to our website, with 155 of these unique visits.
- Across all three events, we had 10 conversations via the live chat feature.
- Overall, we only received three feedback forms, all of which picked the brick option as their preferred option.
- We know the design of our buildings is important to you, which is why we were hoping for more feedback.

Brick design

Substation design option 2 – brick clad

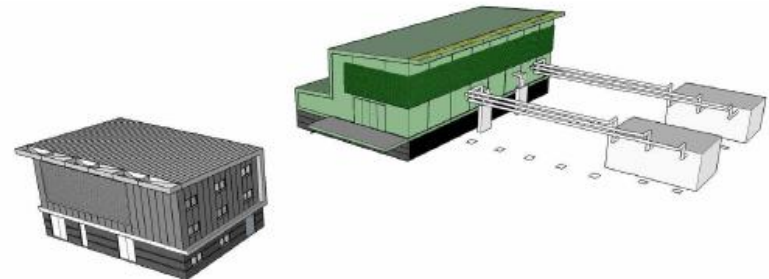
This proposed substation design will include brickwork on the east, south and west elevations of the building.

The base of the building will be formed of dark grey brickwork. The metal cladding panels will wrap the northern elevation of the building annex up to the northern edge of the main substation building and continue across the building roof. This will complement the wrap treatment on our headhouse building and ensure there is overall site cohesion.



3D view to rear (north east)

3D view to front (south west)



Headhouse in context of metal clad design options.

3D view indicating the 'family' of buildings.



Building section



Long elevation



Short elevation

The east, west and south elevations will be clad in an aqua green coloured brickwork, which will incorporate 'saw tooth' (angled) bricks towards the top of the building.

Overha the build the roof roof car which v carbon within tl



F Low level security mesh to base of south elevation



B 'Saw tooth' (angled) brickwork bands



D Painted copper colour coated vertical cladding to rear (north) elevation and roof



E Dark grey brickwork to base



C Copper coloured glazed brickwork to east, south and west elevations



F Low level security mesh to base of south elevation

06

Next steps and timescales

nationalgrid



Next steps and timescales

- 
- **W/c 4 April** – Submit our designs for Prior Approval for the substation and headhouse to Lambeth Council. (*Prior Approval is a formal submission to your local planning authority and the purpose of it is to seek confirmation that specified parts of a development are acceptable, before work can commence.*)
 - Once submitted to the Council, they would validate the application and then start the determination process.
 - **May – early June** – The application should be determined within 8 weeks, but this depends on whether there are any outstanding queries. National Grid will work with Lambeth Council to resolve any issues.
 - **Summer 2022** – Anticipated headhouse construction.
 - **Summer 2022** - UK Power Networks to engage with residents on substation design.
 - **Early 2023** – Anticipated National Grid substation construction.

07

Your questions

nationalgrid

