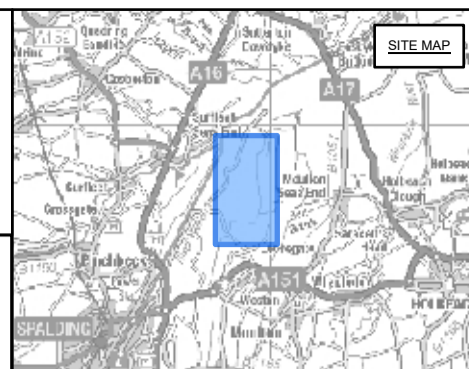




NATIONAL GRID
 WESTON MARSH SUBSTATION A CONNECTION
 SECTION 37 2WS APPLICATION LOCATION PLAN
 SHEET 1 OF 1

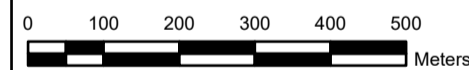


- LEGEND**
- S37 2WS OVERHEAD LINE WORKS SITE BOUNDARY
 - EXISTING LATTICE PYLON
 - EXISTING OVERHEAD LINE

Notes

This drawing is scaled at paper size A3, therefore any prints taken at smaller sizes will affect accuracy of the measurement units and should not be scaled against.

Coordinate System: British National Grid
 Sheet X Centroid Coordinate: 529217 Sheet Y Centroid Coordinate: 327840



BACKGROUND MAPPING INFORMATION HAS BEEN REPRODUCED FROM THE ORDNANCE SURVEY BY PERMISSION OF ORDNANCE SURVEY OF THE CONTROLLER OF HIS MAJESTY'S STATIONERY OFFICE. © CROWN COPYRIGHT AND DATABASE RIGHTS 2026 AC0000807948. © BLUESKY INTERNATIONAL LTD. NATIONAL GRID ELECTRICITY - 100024241. NATIONAL GRID GAS - 100024886.

Issue	Date	Remarks	Drawn	Checked	Approved
A	12/06/2026	FOR SUBMISSION	MG	JP	XX

Title

NATIONAL GRID
 WESTON MARSH
 SUBSTATION A CONNECTION
 SECTION 37 2WS APPLICATION
 LOCATION PLAN
 SHEET 1 OF 1



National Grid Drawing Reference
 GWNC-LST-2WS-ZZZZZ-PLN-EN-000005

Scale	Sheet Size	Sheet	Issue
1:10,000	A3	SHEET 1 of 1	A