

The Great Grid Upgrade

Weston Marsh Substation A

Hydraulic Modelling Report - Part 2 of 3

June 2026

nationalgrid

Weston Marsh Substation A

Document control

Document Properties	
Organisation	WSP UK Ltd
Approved by	National Grid
Title	Flood Risk Assessment
Document Register ID	GWNC-WSP-SS50-XXXXXX-RPT-ES-000006
Data Classification	Public

Version History			
Document	Version	Status	Description / Changes
May 2026	1.0	Final	First Issue
June 2026	2.0	Final	Second Issue - correction

Contents

Executive summary	1
1. Background	3
1.1 Scope of Works	4
1.2 Site Location	5
2. Data collection and review	6
2.1 Review of the existing hydraulic models acquired	6
2.2 Input data	6
3. Modelling Methodology	8
Tidal overtopping	9
Defence breach	9
3.2 Environment Agency Consultation	9
4. Tidal boundary derivation	11
4.1 Methodology	11
4.2 Base Tide	11
4.3 Extreme Water Levels	12
4.4 Sea Level Rise	13
4.5 Resulting Design Boundary	14
5. Model details and implementation	15
5.1 Introduction	15
5.2 Model Extents	15
5.3 Model Topography	16
5.4 Grid Cell Size	17
5.5 Boundary Conditions	17
5.6 Manning's N Roughness Coefficients	18
5.7 Representation of Buildings	19
5.8 Modelling of Defences	19
5.9 Model Updates	19
6. Tidal overtopping and breach modelling	21
6.1 Introduction	21
6.2 Tidal overtopping assessment	21
6.3 Breach Modelling	21
6.4 Model Run Scenarios	23

6.5	Model Run Parameters	25
6.6	Model Stability	25
6.7	Assumptions and Limitations	27
7.	Model Results	28
7.1	General	28
7.2	Results from Tidal Overtopping Modelling	29
7.3	Results from Breach Modelling	29
	Initial breach locations assessment	29
	Final breach modelling	29
7.4	Impact on Sensitive Receptors	30
8.	Sensitivity analysis	33
8.1	General	33
8.2	Basic Sensitivity Analysis	33
	Sensitivity to roughness coefficients	34
	Sensitivity to Downstream Boundary	34
	Sensitivity to Model Grid Cell Size	35
8.3	Sensitivity to H++	36
8.4	Sensitivity to long duration run	37
9.	Conclusions	38

Table 2.1	Summary of data collected	7
Table 4.1	Tidal Levels for Tabs Head from UKHO	11
Table 4.2	Tidal boundary peak water levels	14
Table 5.1	Roughness coefficients	28
Table 6.1	List of model run scenarios	23
Table 7.1	Peak flood levels for breach locations	29
Table 7.2	Change in flood depths and hazard rating at (potentially) sensitive receptors	32

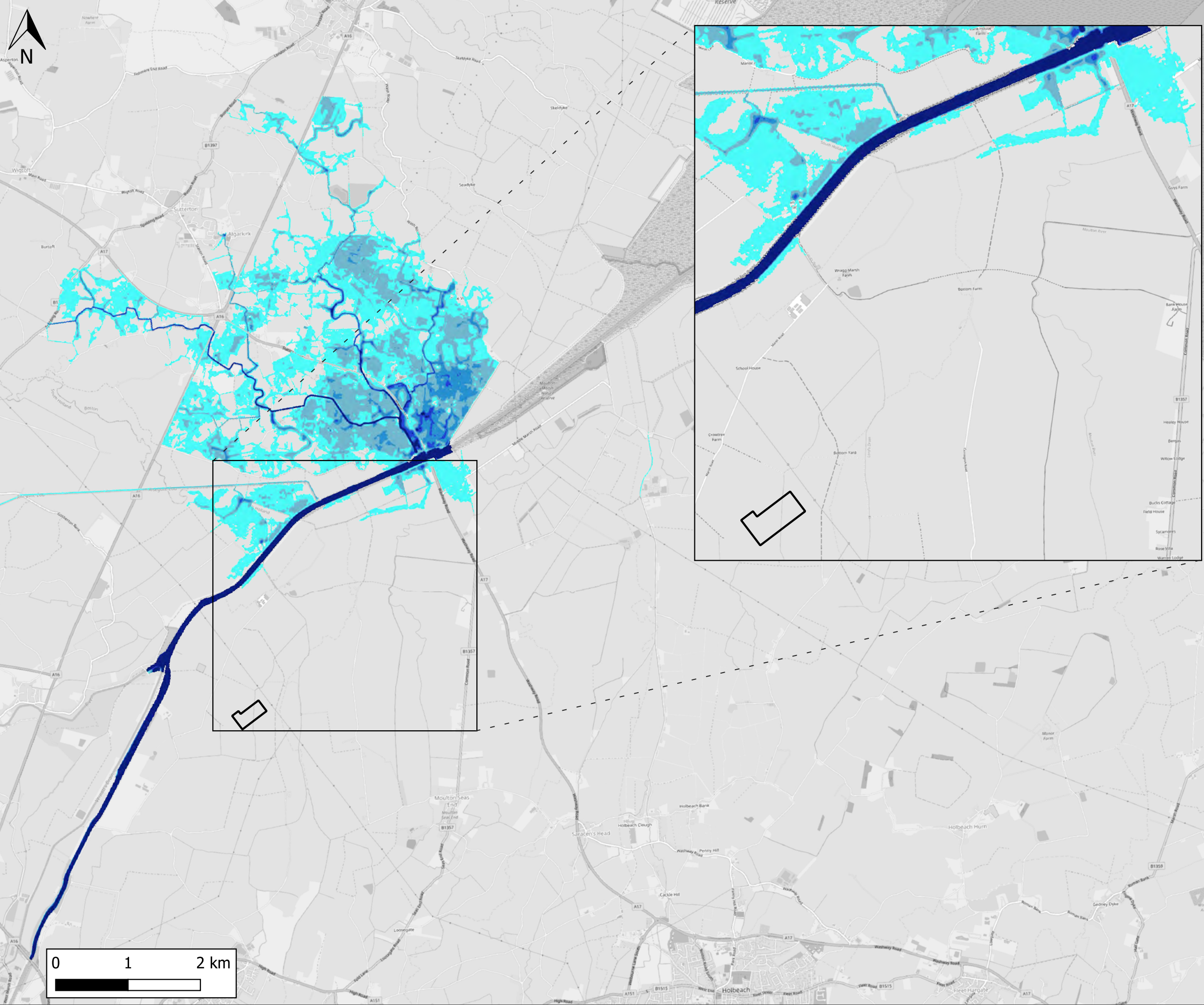
Image 1.1	Weston Marsh Substation A Location	3
Image 4.1	Base Astronomical Tide for Tidal Boundary Creation	12
Image 4.2	Area Specific Storm Surge Shape from EACFB Dataset	13
Image 4.3	EA climate change allowances for sea level rise	13
Image 4.3	Final Design Tidal Boundaries for different events	14
Image 5.1	View of the LiDAR-based DTM	16
Image 6.1	Breach locations	22
Image 6.2	HPC parameters from 0.1% AEP+CC (UE) in 2105 base breach run	26
Image 6.3	dV plot from 0.1% AEP+CC (UE) in 2105 base breach run	17
Image 7.1	Flood Impact map at (potentially) sensitive receptors	32
Image 8.1	Sensitivity on Manning's 'n' roughness	34
Image 8.2	Sensitivity on downstream boundary	35
Image 8.3	Sensitivity to model grid cell size	36

References		40
------------	--	----

Figure 1	Model Schematic	42
Figure 2	Tidal Overtopping Assessment Flood Depth 0.1% AEP+ CC (Upper End) in 2015 Event	44
Figure 3	Baseline Breach Assessment Flood Depth 0.5% AEP in 2026 (Present Day) Event	46
Figure 4	Baseline Breach Assessment Flood Depth 0.1% AEP in 2026 (Present Day) Event	48
Figure 5	Baseline Breach Assessment Flood Depth 0.5% AEP+CC (Upper End) in 2105 Event	50
Figure 6	Baseline Breach Assessment Flood Depth 0.1% AEP+CC (Upper End) in 2105 Event	52
Figure 7	Post-Development Breach Assessment Flood Depth 0.1% AEP in 2026 (Present Day) Event	54
Figure 8	Post-Development Breach Assessment Flood Depth 0.1% AEP+CC (Upper End) in 2105 Event	56
Figure 9	Breach Assessment Flood Impact 0.1% AEP+CC (Upper End) in 2105 Event	58
Figure 10	Baseline Breach Assessment Flood Hazard 0.1% AEP+CC (Upper End) in 2105 Event	60
Figure 11	Post-Development Breach Assessment Flood Hazard 0.1% AEP+CC (Upper End) in 2105 Event	62
Figure 12	Baseline Breach Assessment Flood Extents Progression 0.1% AEP+CC (Upper End) in 2105 Event	64
Figure 13	Baseline Breach Assessment Sensitivity Test on H++ 0.5% AEP+CC (H++ to 2100)	66
Figure 14	Baseline Breach Assessment Sensitivity Test on H++ 0.1% AEP+CC (H++ to 2100)	68
Figure 15	Post-Development Breach Assessment Sensitivity on Long Breach Duration 0.1% AEP+CC (Upper End) in 2105 Event	70

Figure 1 Model Schematic

Figure 2 Tidal Overtopping Assessment Flood Depth 0.1% AEP+ CC (Upper End) in 2015 Event



KEY:

Substation Footprint Area

Flood Depth (m)

- <0.3
- 0.3 - 0.6
- 0.6 - 0.9
- 0.9 - 1.2
- >1.2

01	01/05/26	LF	FIRST ISSUE	GF	JC
REV	DATE	DRW	DESCRIPTION	CHK	APP

STATUS: FOR INFORMATION ONLY

wsp

3rd Floor, Kings Orchard
 1 Queen Street
 Bristol, BS2 0HQ
 Tel: +44 (0) 117 930 6200
 www.wsp.com

CLIENT: NATIONAL GRID

ARCHITECT:

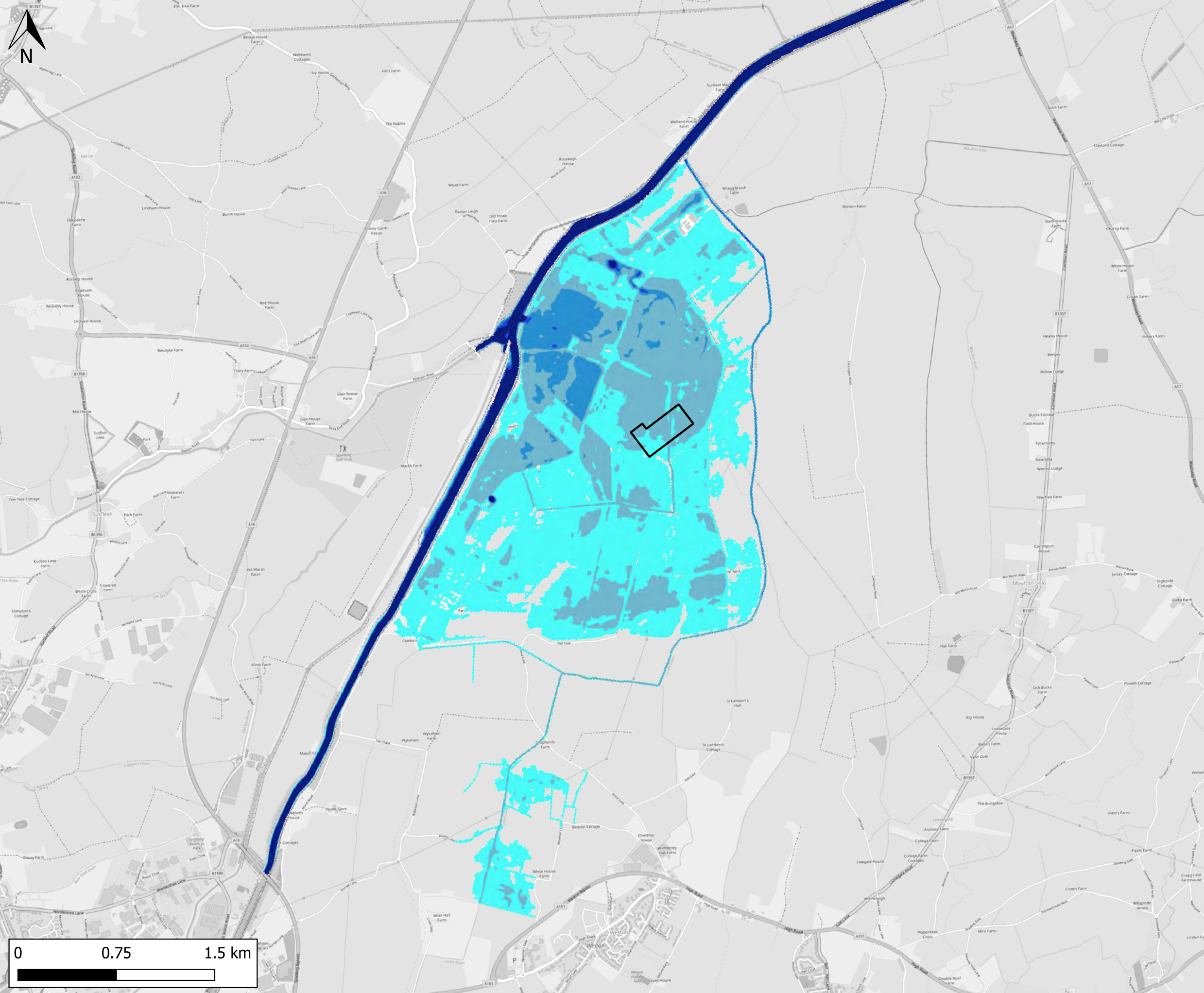
PROJECT: PROPOSED ELECTRICITY SUBSTATION WORKS AT WESTON MARSH

TITLE: TIDAL OVERTOPPING ASSESSMENT FLOOD DEPTH 0.1% AEP+CC (UPPER END) IN 2105 EVENT

DRAWN: LF	CHECKED: GF	APPROVED: JC
QGIS FILE: -	SCALE @A3: NTS	DATE: 01/05/26

PROJECT No: 70110430	DRAWING No: WMA-TCPA-FLMOD-002	REV: 01
----------------------	--------------------------------	---------

Figure 3 Baseline Breach Assessment Flood Depth 0.5% AEP in 2026 (Present Day) Event



KEY:

Substation Footprint Area

Flood Depth (m)

- <0.3
- 0.3 - 0.6
- 0.6 - 0.9
- 0.9 - 1.2
- >1.2

01	01/05/26	LF	FIRST ISSUE	GF	JC
REV	DATE	DRW	DESCRIPTION	CHK	APP

STATUS: FOR INFORMATION ONLY

wsp

3rd Floor, Kings Orchard
 1 Queen Street
 Bristol, BS2 0HQ
 Tel: +44 (0) 117 930 6200
 www.wsp.com

CLIENT: NATIONAL GRID

ARCHITECT:

PROJECT: PROPOSED ELECTRICITY SUBSTATION WORKS AT WESTON MARSH

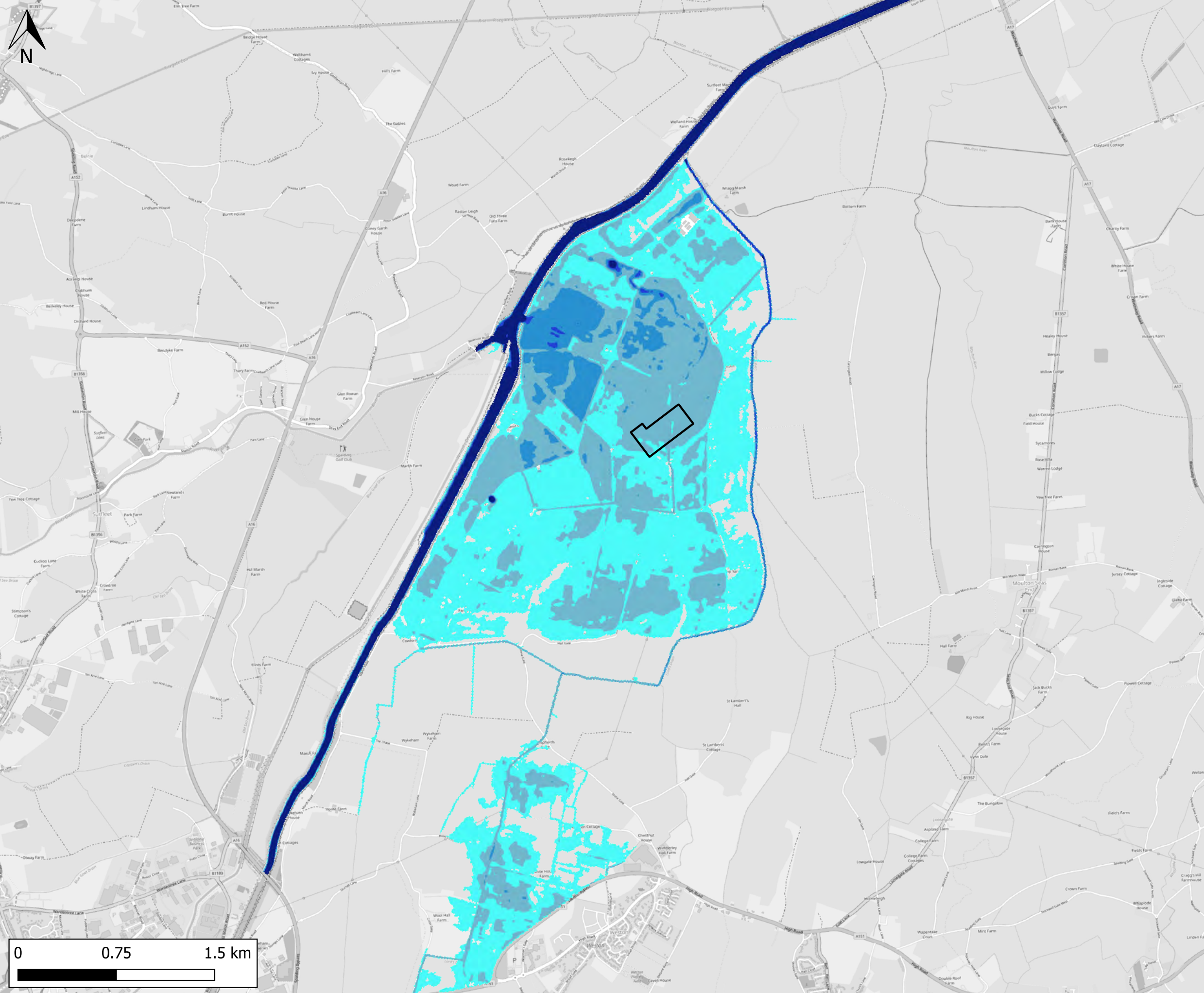
TITLE: BASELINE BREACH ASSESSMENT FLOOD DEPTH 0.5% AEP IN 2026 (PRESENT DAY) EVENT

DRAWN: LF	CHECKED: GF	APPROVED: JC
-----------	-------------	--------------

QGIS FILE: -	SCALE @A3: NTS	DATE: 01/05/26
--------------	----------------	----------------

PROJECT No: 70110430	DRAWING No: WMA-TCPA-FLMOD-003	REV: 01
----------------------	--------------------------------	---------

Figure 4 Baseline Breach Assessment Flood Depth 0.1% AEP in 2026 (Present Day) Event



KEY:

Substation Footprint Area

Flood Depth (m)

- <0.3
- 0.3 - 0.6
- 0.6 - 0.9
- 0.9 - 1.2
- >1.2

01	01/05/26	LF	FIRST ISSUE	GF	JC
REV	DATE	DRW	DESCRIPTION	CHK	APP

STATUS: FOR INFORMATION ONLY

wsp

3rd Floor, Kings Orchard
 1 Queen Street
 Bristol, BS2 0HQ
 Tel: +44 (0) 117 930 6200
 www.wsp.com

CLIENT: NATIONAL GRID

ARCHITECT:

PROJECT: PROPOSED ELECTRICITY SUBSTATION WORKS AT WESTON MARSH

TITLE: BASELINE BREACH ASSESSMENT FLOOD DEPTH 0.1% AEP IN 2026 (PRESENT DAY) EVENT

DRAWN: LF	CHECKED: GF	APPROVED: JC
-----------	-------------	--------------

QGIS FILE: -	SCALE @A3: NTS	DATE: 01/05/26
--------------	----------------	----------------

PROJECT No: 70110430	DRAWING No: WMA-TCPA-FLMOD-004	REV: 01
----------------------	--------------------------------	---------

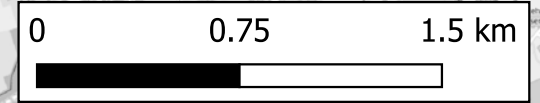
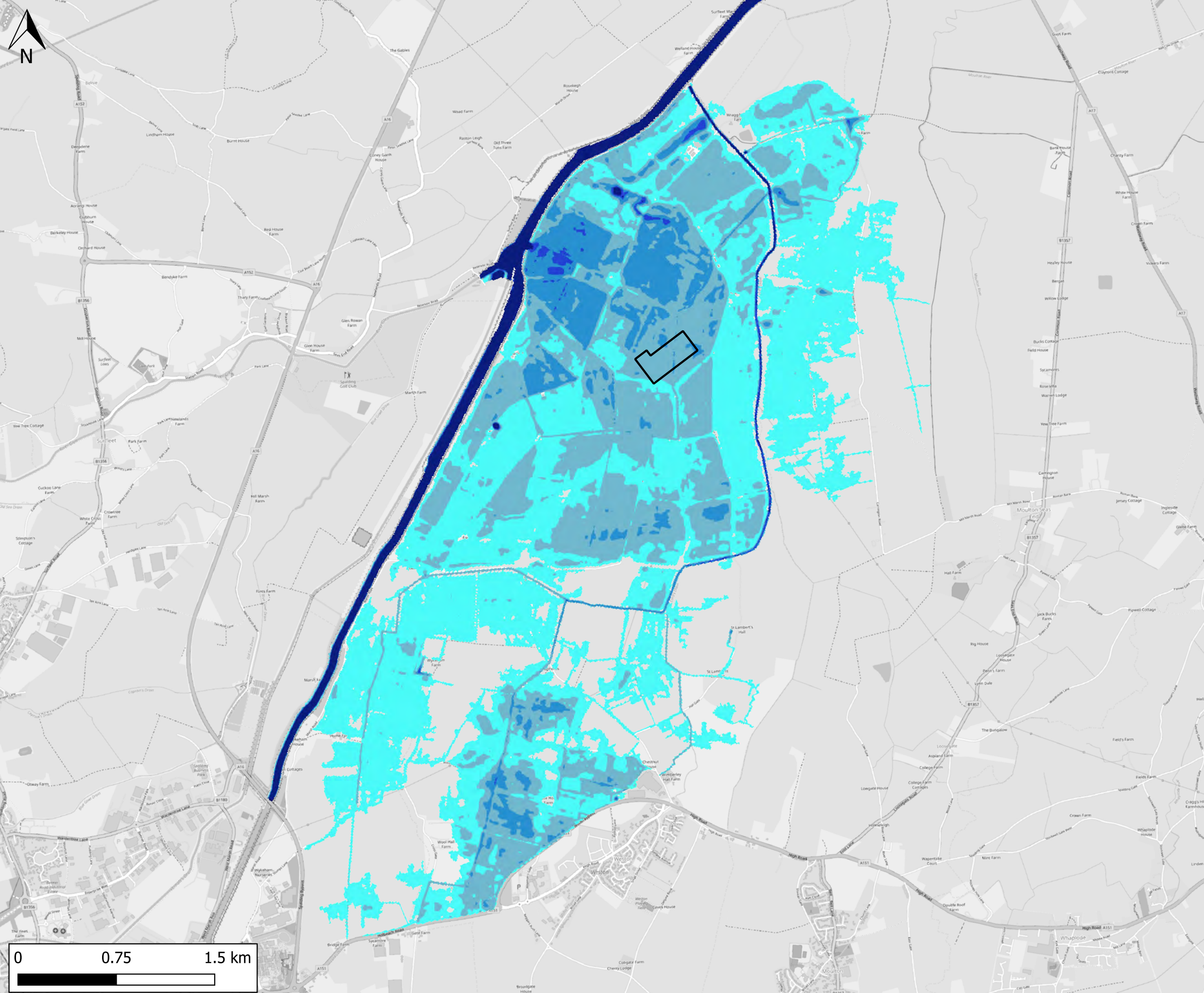


Figure 5 Baseline Breach Assessment Flood Depth 0.5% AEP+CC (Upper End) in 2105 Event

Created by: UKGXF006 - 26/19/01 - \\uk.wspgroup.com\central data\Projects\701.10xxx\701.10430 - NG Grimby to Waipole Lots 3.4, 3.9 and 3.16\03 WIP\01 Hydraulic Modelling\03 GIS\02 QGIS Projects\WMA_TCPA_Flood_Maps_Figures_UPD.ggz



KEY:

Substation Footprint Area

Flood Depth (m)

- <0.3
- 0.3 - 0.6
- 0.6 - 0.9
- 0.9 - 1.2
- >1.2

01	01/05/26	LF	FIRST ISSUE	GF	JC
REV	DATE	DRW	DESCRIPTION	CHK	APP

STATUS: FOR INFORMATION ONLY



3rd Floor, Kings Orchard
1 Queen Street
Bristol, BS2 0HQ
Tel: +44 (0) 117 930 6200
www.wsp.com

CLIENT: NATIONAL GRID

ARCHITECT:

PROJECT: PROPOSED ELECTRICITY SUBSTATION WORKS AT WESTON MARSH

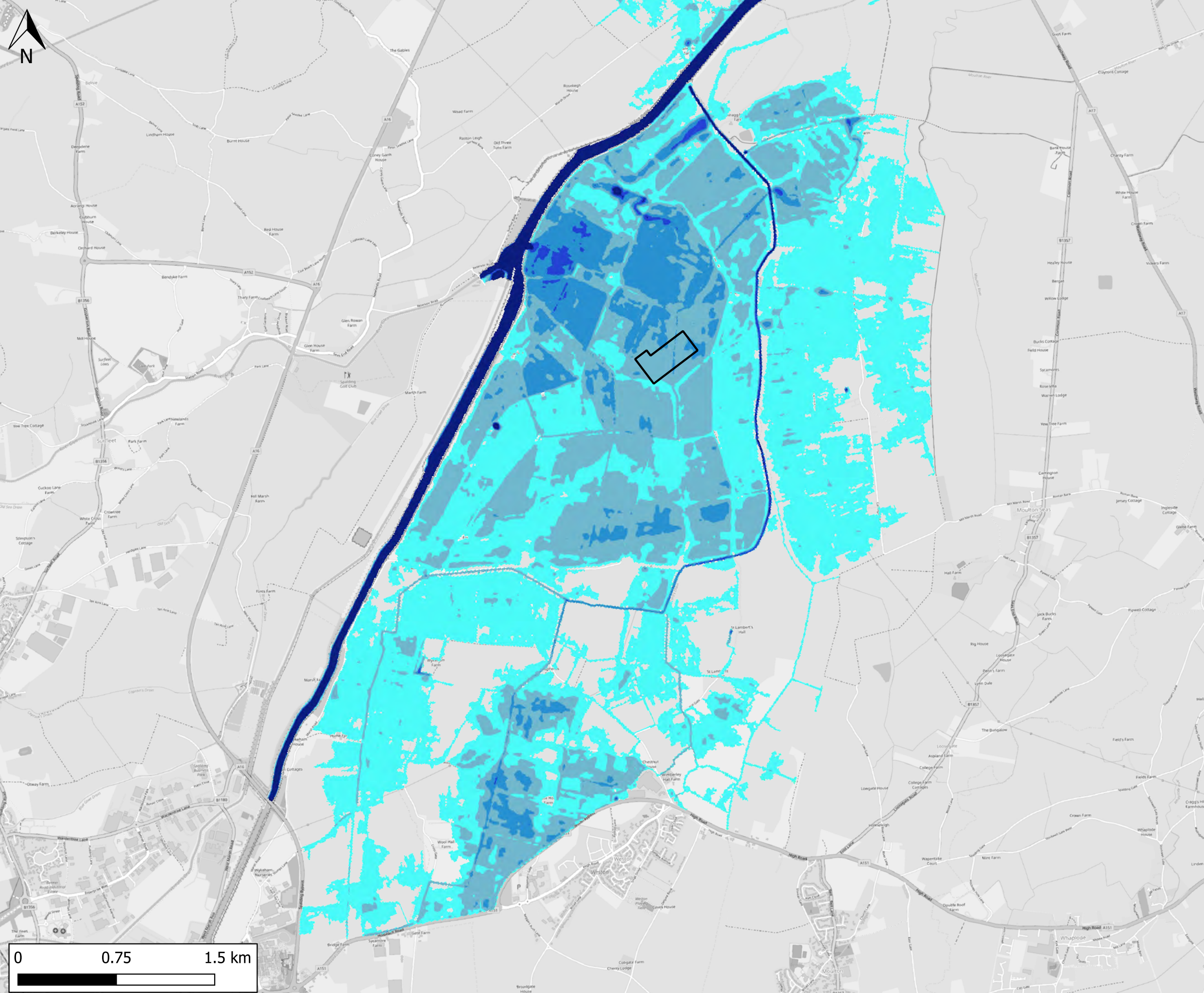
TITLE: BASELINE BREACH ASSESSMENT FLOOD DEPTH 0.5% AEP+CC (UPPER END) IN 2105 EVENT

DRAWN: LF	CHECKED: GF	APPROVED: JC
-----------	-------------	--------------

QGIS FILE: -	SCALE @A3: NTS	DATE: 01/05/26
--------------	----------------	----------------

PROJECT No: 70110430	DRAWING No: WMA-TCPA-FLMOD-005	REV: 01
----------------------	--------------------------------	---------

**Figure 6 Baseline Breach Assessment
Flood Depth 0.1% AEP+CC
(Upper End) in 2105 Event**



KEY:

Substation Footprint Area

Flood Depth (m)

- <0.3
- 0.3 - 0.6
- 0.6 - 0.9
- 0.9 - 1.2
- >1.2

01	01/05/26	LF	FIRST ISSUE	GF	JC
REV	DATE	DRW	DESCRIPTION	CHK	APP

STATUS: FOR INFORMATION ONLY

wsp

3rd Floor, Kings Orchard
1 Queen Street
Bristol, BS2 0HQ
Tel: +44 (0) 117 930 6200
www.wsp.com

CLIENT: NATIONAL GRID

ARCHITECT:

PROJECT: PROPOSED ELECTRICITY SUBSTATION WORKS AT WESTON MARSH

TITLE: BASELINE BREACH ASSESSMENT FLOOD DEPTH 0.1% AEP+CC (UPPER END) IN 2105 EVENT

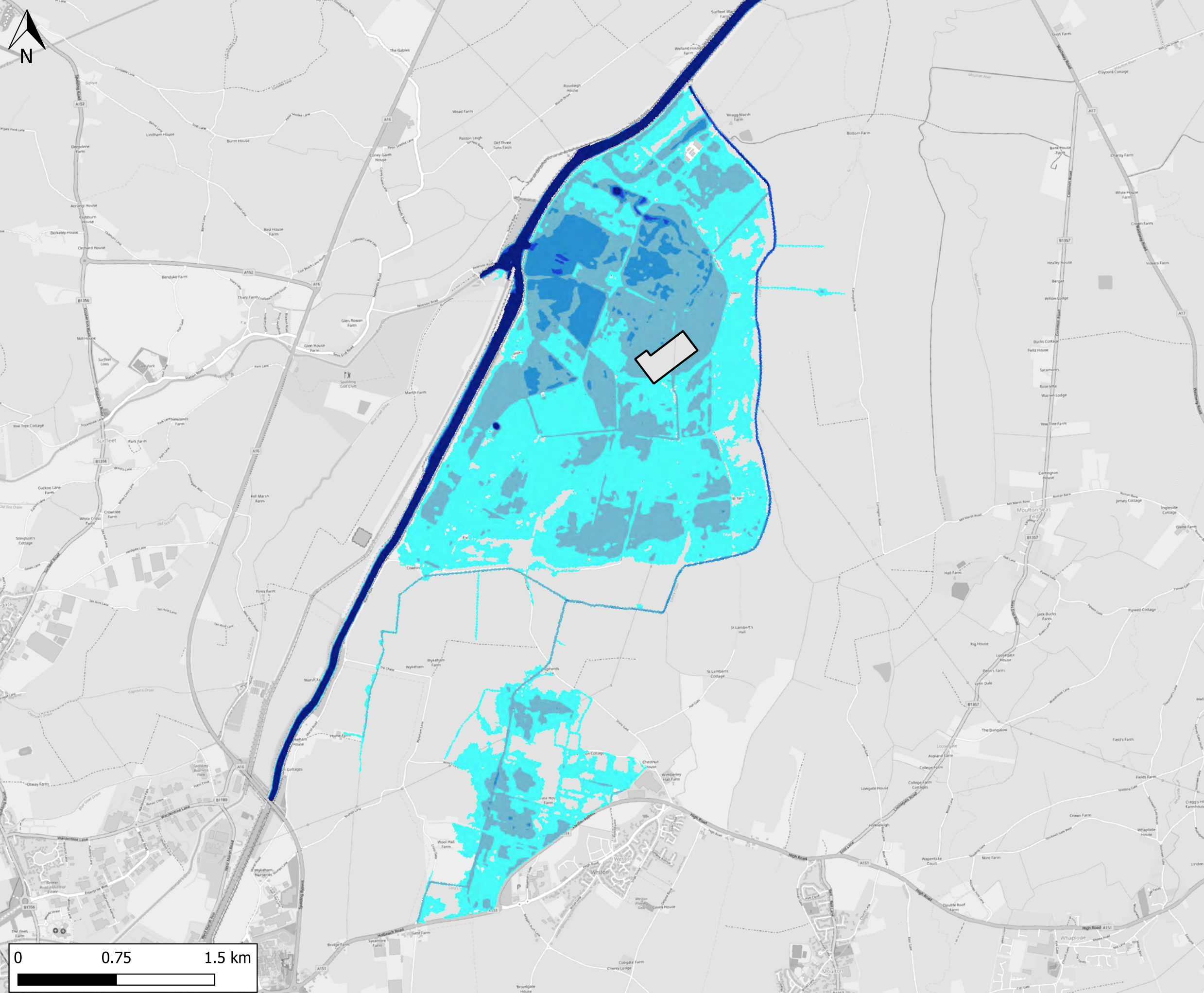
DRAWN: LF	CHECKED: GF	APPROVED: JC
-----------	-------------	--------------

QGIS FILE: -	SCALE @A3: NTS	DATE: 01/05/26
--------------	----------------	----------------

PROJECT No: 70110430	DRAWING No: WMA-TCPA-FLMOD-006	REV: 01
----------------------	--------------------------------	---------

**Figure 7 Post-Development Breach
Assessment Flood Depth 0.1%
AEP in 2026 (Present Day) Event**

Created by: UKGXF006 - 26/11/01 - \\uk.wspgroup.com\central\data\Projects\701.10xxx\701.10430 - NG Grimby to Waipole Lots 3.4, 3.9 and 3.16\03 WIP\01 Hydraulic Modelling\03 GIS\02 QGIS Projects\WMA_TCPA_Flood_Maps_Figures_UPD.ggz



KEY:

Substation Footprint Area

Flood Depth (m)

- <0.3
- 0.3 - 0.6
- 0.6 - 0.9
- 0.9 - 1.2
- >1.2

01	01/05/26	LF	FIRST ISSUE	GF	JC
REV	DATE	DRW	DESCRIPTION	CHK	APP

STATUS: FOR INFORMATION ONLY



3rd Floor, Kings Orchard
1 Queen Street
Bristol, BS2 0HQ
Tel: +44 (0) 117 930 6200
www.wsp.com

CLIENT: NATIONAL GRID

ARCHITECT:

PROJECT: PROPOSED ELECTRICITY SUBSTATION WORKS AT WESTON MARSH

TITLE: POST-DEVELOPMENT BREACH ASSESSMENT FLOOD DEPTH 0.1% AEP IN 2026 (PRESENT DAY) EVENT

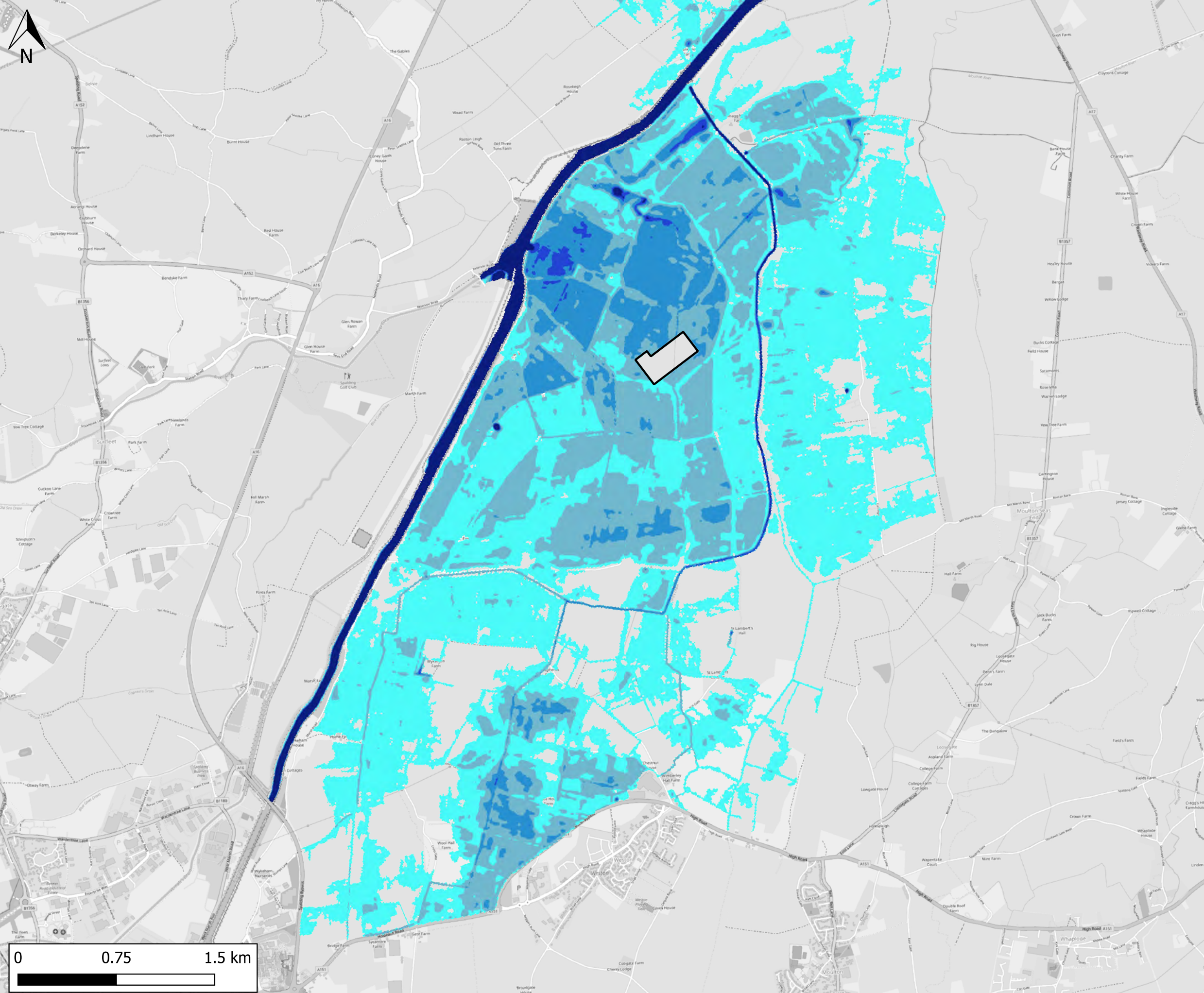
DRAWN: LF	CHECKED: GF	APPROVED: JC
-----------	-------------	--------------

QGIS FILE: -	SCALE @A3: NTS	DATE: 01/05/26
--------------	----------------	----------------

PROJECT No: 70110430	DRAWING No: WMA-TCPA-FLMOD-007	REV: 01
----------------------	--------------------------------	---------

Figure 8 Post-Development Breach Assessment Flood Depth 0.1% AEP+CC (Upper End) in 2105 Event

Created by: UKGXF006 - 26/21/01 - \\uk.wspgroup.com\central\data\Projects\701.10xxx\701.10430 - NG Grimby to Waipole Lots 3.4, 3.9 and 3.16\03 WIP\01 Hydraulic Modelling\03 GIS\02 QGIS Projects\WMA_TCPA_Flood_Maps_Figures_UPD.ggz



KEY:

Substation Footprint Area

Flood Depth (m)

- <0.3
- 0.3 - 0.6
- 0.6 - 0.9
- 0.9 - 1.2
- >1.2

01	01/05/26	LF	FIRST ISSUE	GF	JC
REV	DATE	DRW	DESCRIPTION	CHK	APP

STATUS: FOR INFORMATION ONLY

wsp

3rd Floor, Kings Orchard
 1 Queen Street
 Bristol, BS2 0HQ
 Tel: +44 (0) 117 930 6200
 www.wsp.com

CLIENT: NATIONAL GRID

ARCHITECT:

PROJECT: PROPOSED ELECTRICITY SUBSTATION WORKS AT WESTON MARSH

TITLE: POST-DEVELOPMENT BREACH ASSESSMENT FLOOD DEPTH 0.1% AEP+CC (UPPER END) IN 2105 EVENT

DRAWN: LF	CHECKED: GF	APPROVED: JC
-----------	-------------	--------------

QGIS FILE: -	SCALE @A3: NTS	DATE: 01/05/26
--------------	----------------	----------------

PROJECT No: 70110430	DRAWING No: WMA-TCPA-FLMOD-008	REV: 01
----------------------	--------------------------------	---------