



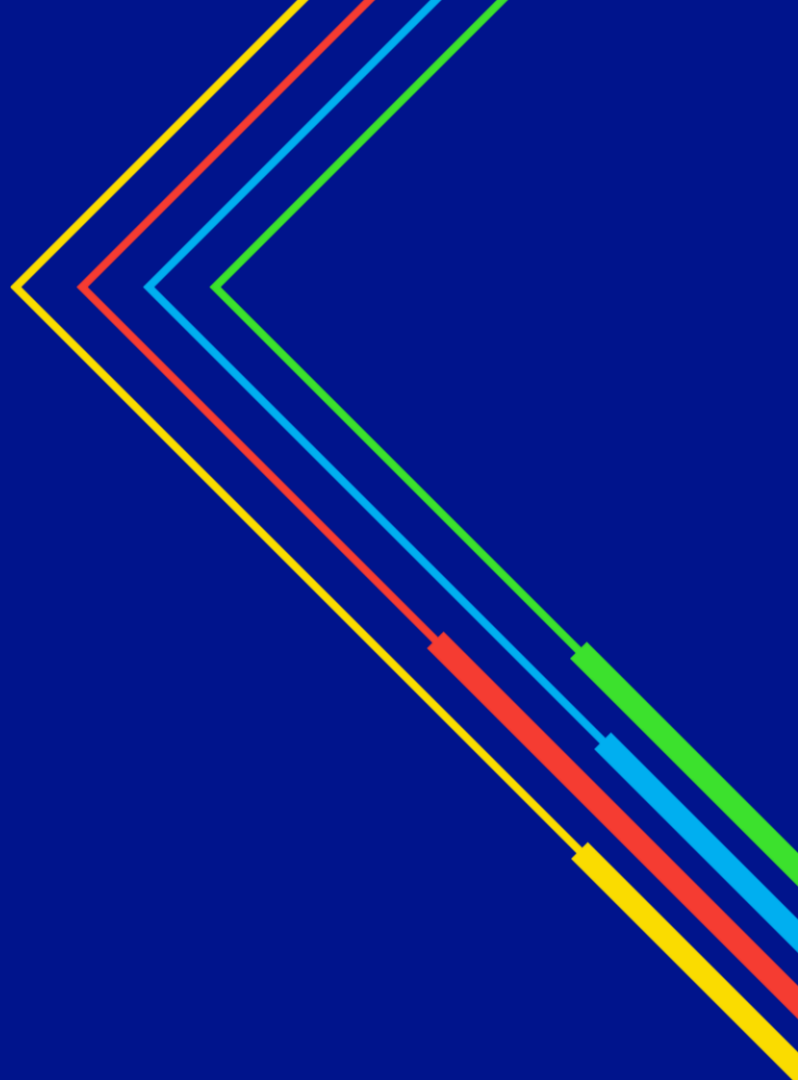
Electricity  
Transmission

# Social & Environmental Action Plan

Webinar

Thursday 14 May 2026

nationalgrid



# Welcome to our webinar on our RIIO-T3 Social & Environmental Plan

- Thank you for joining us! You will be joined in listen only mode.
- Please do not unmute yourself or turn your camera on.
- Please note we will be recording this webinar.
- The recording, slides and Q&A will be made available.



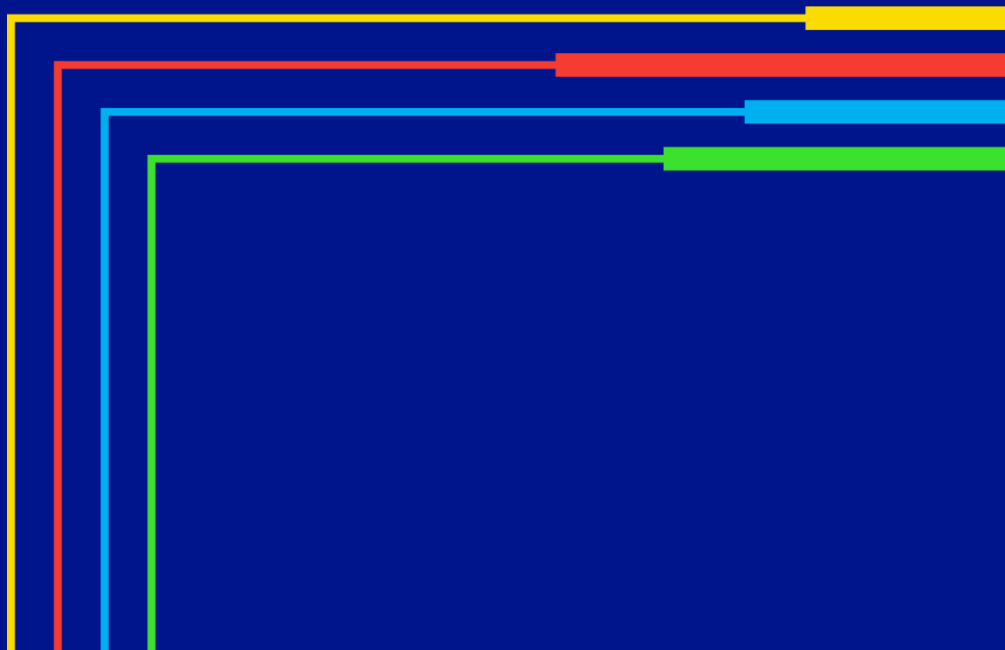
# Poll # 1 - In one or two words, what would you like to get out of this webinar?



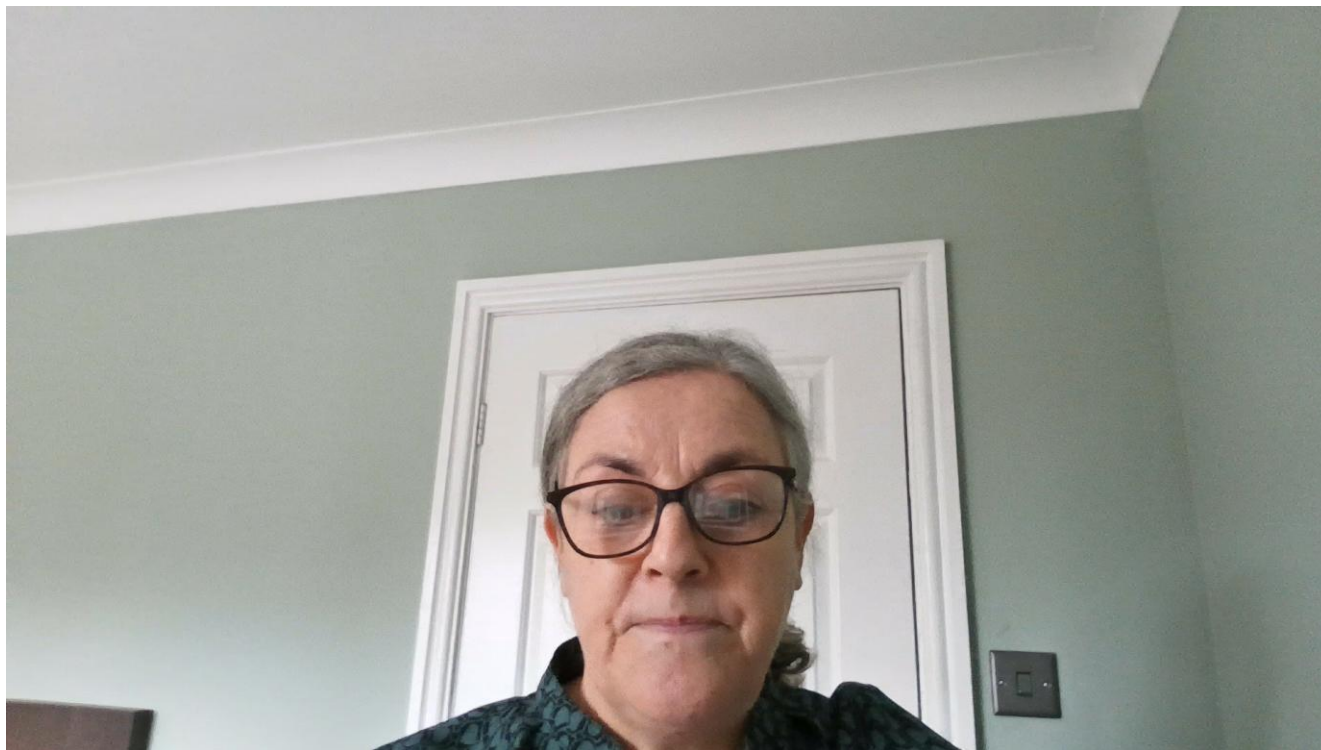
# Contents page

- 
- 1** Introduction to session
  - 2** What is the SEAP and why it matters
  - 3** Our key priorities
  - 4** What this means for you
  - 5** How to get involved
  - 6** Q&A
-

# What is the SEAP and why it matters



# Introduction from Ciara Taberner



# What is the Social & Environmental Action Plan (SEAP)?

The Social & Environmental Action Plan (SEAP) sets out how we will deliver our network investment responsibly, transparently and with measurable impact.

The plan is structured around four strategic pillars:

- **Climate action** – accelerating progress towards net zero and reducing emissions across our operations and supply chain.
- **Nature positive** – protecting, restoring and enhancing the natural environment.
- **One planet living** – operating within planetary limits through responsible resource use.
- **Social value** – delivering fair, lasting benefits for communities, jobs, skills and local supply chains.



**A more joined-up view of social and environmental impact: social and environmental priorities are treated as connected, not separate.**

# Why this matters

**The Social and Environmental Action Plan (SEAP) is how we deliver a responsible, resilient energy transition.**

## It helps us deliver our core mission responsibly

- Make long-term decisions with lasting social and environmental impact
- Build trust with communities, stakeholders and regulators
- Deliver infrastructure that is resilient, efficient and value-for-money
- Ensure carbon, nature and people are considered alongside cost, safety and delivery

## It reduces risks and avoids re-work

- Spot risks early by considering carbon, nature and communities from the outset
- Avoid late change and re-work by embedding expectations into design and delivery
- Protect confidence and certainty through clear decisions, assurance and trust

## It provides clarity in a complex landscape

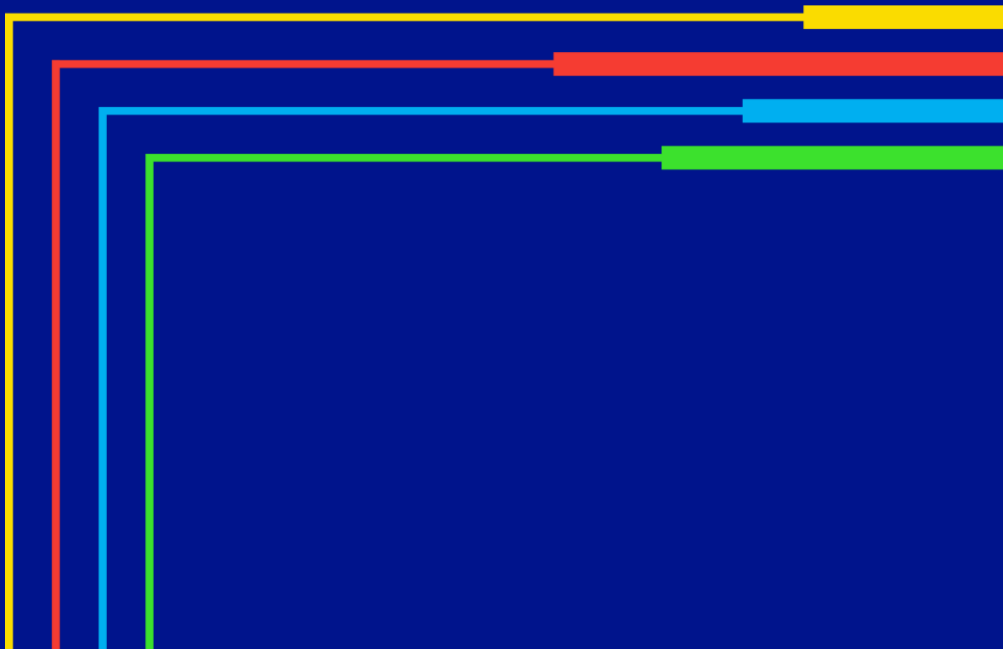
Colleagues are navigating:

- Regulatory commitments
- Policy expectations
- Stakeholder scrutiny
- Internal priorities and delivery pressures

The SEAP pulls this together into a single, coherent plan. This clarity helps teams make decisions with confidence

# 2

## Our priorities



# Climate Action



We will achieve net zero by 2050, ensuring alignment to climate science and industry best practice to limit the most severe effects of climate change.



National Grid

## Sustainable operations



### By 2031, we will:

- Deliver 50% reduction in scope 1 and 2 emissions by 2030 from a 2018/19 baseline.
- Deliver 50% reduction in SF<sub>6</sub> emissions by 2030 from 2018/19 baseline, and we will no longer install SF<sub>6</sub> where there is a technically, commercially and time viable alternative.
- Ensure 100% of our fleet purchases for light and medium duty vehicles will be Zero Emissions Vehicles (ZEVs).
- Set a business travel intensity target by 2027 to drive sustainable business practices.
- Deliver a 20% energy efficiency improvement in our substation estate from a 2022/2023 baseline.
- Power our back-up generators and maintenance activities with diesel-free, cleaner alternatives, where there is a commercial, technical and timely available alternative.
- Implement a strategy to efficiently manage both technical and non-technical energy losses on our network.

## Infrastructure for net zero



### By 2031, we will:

- Deliver our construction projects as low-carbon intensity as possible, to support the delivery of the National Grid Group Scope 3 emissions reduction target:
  - Use 50% low-emission concrete by 2030.
  - Use 50% low-emission steel by 2030.
  - Phase out diesel in construction by 2035.
- Invest in carbon compensation projects that also deliver social and/or nature benefits from constructing our infrastructure.

## Sustainable supply chains & offices



### By 2031:

- 80% of our suppliers (by emissions) will have formally committed to set a Science Based Target.
- Our corporate property managed office estate will be net zero by 2030.

The supply chain is integral to fulfilling a substantial part of our climate action commitments. We are committed to working in partnership with our suppliers to deliver these outcomes as efficiently and cost-effectively as possible. As we enter RIIO-T3 in 2026, we will continue to transition into a new phase of climate adaptation. Our [Climate Resilience Strategy](#) sets out our approach.

# Nature Positive



We will preserve and enhance the natural environment and contribute to the wider global Nature Positive goal to 'halt and reverse nature loss by 2030'.

## Environmental improvement



### By 2031, we will:

- Deliver a minimum of 10% Biodiversity Net Gain (BNG) (or equivalent in Wales), with wider environmental and societal benefits for all developments requiring formal planning permissions and consenting.
- Deliver a measurable contribution to local nature recovery strategies alongside wider environmental and societal benefits for projects without statutory biodiversity requirements.
- Deliver a measurable contribution of marine restoration and enhancement for our offshore projects alongside marine environmental and social benefits.

## Embodied ecological impacts



### By 2031, we will:

- Disclose nature-related risks and opportunities aligned with the Taskforce for Nature Related Disclosures (TNFD) framework and collaborate with Transmission Owners and supply chain to set reduction targets.

## The nature networks



### By 2031, we will:

- Work with grantors to deliver nature connectivity corridors, climate resilience and wider environmental benefits across our linear network.
- Facilitate local nature improvements in areas impacted by our overhead line refurbishment and maintenance activities.
- Maintain our partnership agreements for non-operational land.



# One Planet Living



We will operate within Earth's limits by seeking to eliminate pollution and restrict the use of finite resources, ensuring humanity can prosper sustainably for generations to come.



## Resources & circularity



### By 2031, we will:

- Reduce our waste intensity by adopting zero avoidable waste principles in construction projects.
- Increase use of recycled / reused content in our operations.
- Develop our circular economy maturity by aligning to international standards.
- Increase our resource efficiency through better design and planning with the use of Material Passports (MPs) and Resources Efficiency Plans (REPs).

## Water stewardship



### By 2031, we will:

- Assess our water footprint and identify efficiency improvements and wastewater reduction opportunities.

## Excellent environmental management



### By 2031, we will:

- Reduce risks associated with oil filled equipment through improved asset management practices.
- Maintain our certified Environmental Management System and plan to address all risks and opportunities on an annual basis.

# Social Value



We will build social value and support consumers in vulnerable situations to have a lasting positive impact in our communities.



## Skills & jobs



We will make the most of opportunities to accelerate social mobility, generating new or improved skills and employment opportunities for local communities and identified disadvantaged groups. Our outcomes are:

- Increase STEM careers and aspirations.
- Accelerate social mobility within the communities we serve by facilitating meaningful employment opportunities.
- Boost skills and qualifications: Increase the attainment of skills, qualifications, and employment opportunities specifically within the energy sector.

## Local & diverse supply chain



We will support local and diverse providers in our supply chain, working with our partners to grow local market capability and tackle barriers to entry. Our outcomes are:

- Provide better access for Small and Medium Enterprises (SMEs) and voluntary, community and social enterprise (VCSEs) to our contracts.
- Upskill and support SMEs and VCSEs to participate in our procurement.
- Increase benefits for local supply chains and economies.

## Community legacy



We will work with our communities to address local and regional needs, collaborating to build resilience and deliver benefits in relation to energy. Our outcomes are:

- Work with communities to deliver lasting local benefits.
- Support vulnerable households and inclusive access to energy.
- Enhance environmental value for communities.

Social value outcomes are most effective when they are informed by robust baseline data and shaped by local need. While we already deliver positive social impact, data is not yet captured consistently across the business and supply chain to support meaningful targets at scale. During early RIIO-T3, we will focus on strengthening data, establishing baselines and engaging stakeholders to inform future, outcome-focused targets. As our maturity grows, we will move from qualitative outcomes towards clearer, measurable commitments.

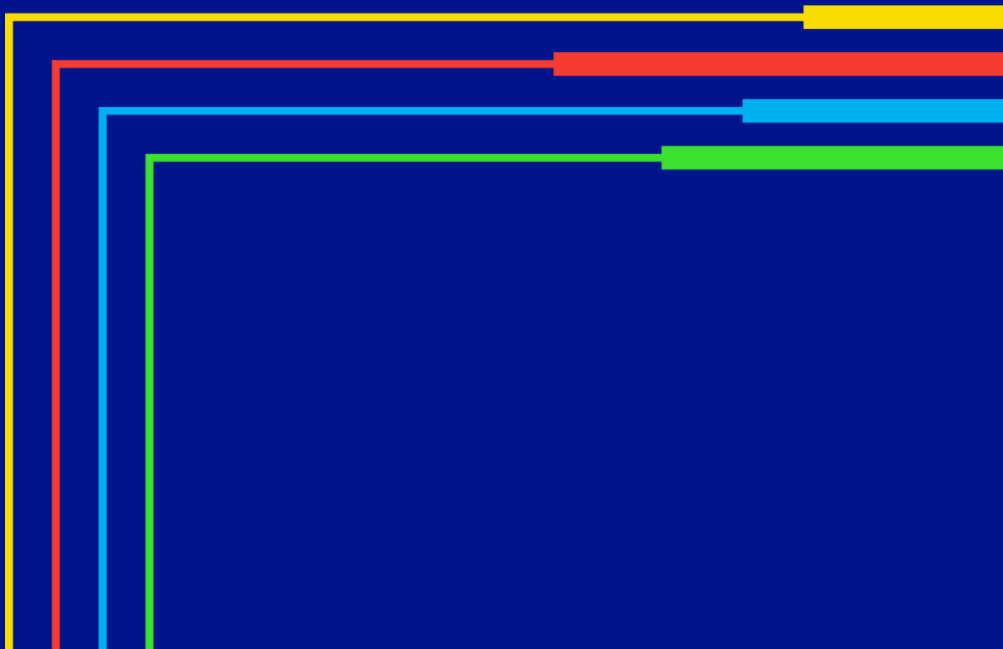
## Poll # 2 - In which area(s) do you feel you can add the most value to SEAP outcomes?

1. Reducing carbon
2. Supporting nature and biodiversity
3. Embedding circular economy
4. Social value



# 3

What this means  
for you



# What this means for you

**Whether you are a contractor, supplier or NGO partner, the SEAP is about how we collaborate, plan and deliver work together.**

## **The SEAP provides greater clarity on:**

- Our priorities for carbon, nature, resources and people
- What “good” looks like in design, delivery and engagement
- How social and environmental considerations are factored into decision-making

## **Delivering the SEAP relies on strong collaboration:**

- Contractors and suppliers play a key role in achieving outcomes on the ground
- NGOs and stakeholders bring valuable expertise, insight and challenge
- We want open dialogue, shared learning and continuous improvement

## Measuring success and accountability

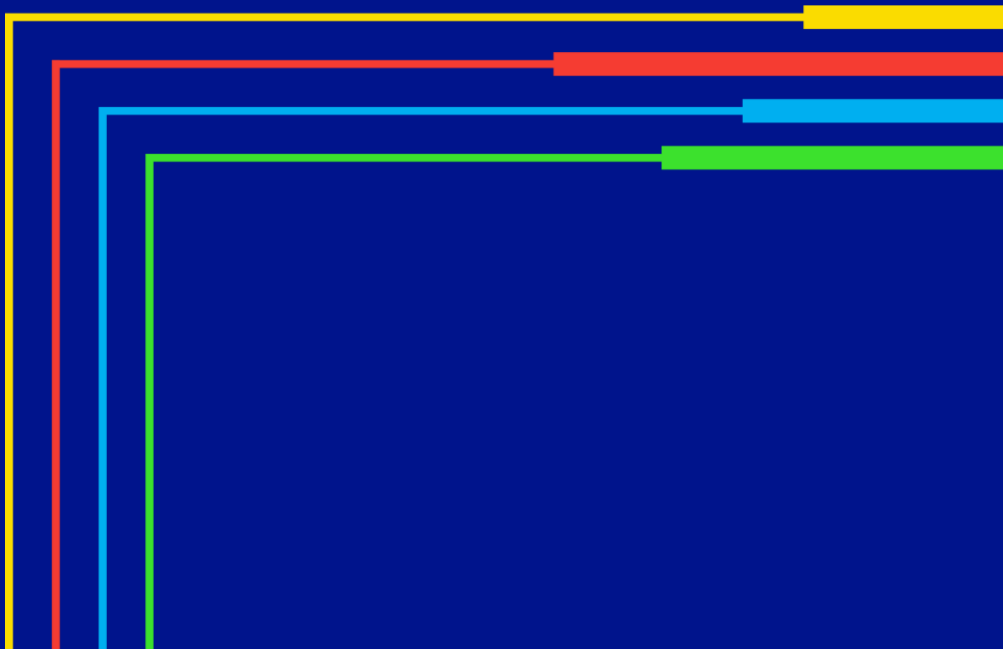
Delivery will be tracked, reported and acted on.

- ETKPIs
- Programme Board meetings
- Regular reporting to leadership and external forums/ working groups



# 4

## How to get involved



# How to get involved

*The outcomes we're committing to will only be achieved if they're considered early and owned across our **WHOLE** supply chain!*



**So it is essential that YOU consider the role that YOU play within your organisation and how your company can help play your part in helping us achieve our T3 goals and ambitions...**

# How to get involved

*The outcomes we're committing to will only be achieved if they're considered early and owned across our **WHOLE** supply chain!*

## Project Planning



- *Where are we planning to build our assets?*
- *What materials are we likely to need?*
- *Are you aware of our consenting requirements?*
- *Are we designing our assets with resilience in mind particularly in respect of climate change and the increasing demand on the network?*
- *What communities are likely to be impacted? How can we turn this into an opportunity?*

# How to get involved

*The outcomes we're committing to will only be achieved if they're considered early and owned across our **WHOLE** supply chain!*



**Client  
Requirements**



- *What type of materials are you sourcing and from where?*
- *Do your company values and commitments align to ours?*
- *Are you familiar with the E&S aspects and deliverables contained within our contracts?*
- *Are you able to deliver against the pillars of our T3 SEAP? If not, is there any support you need?*
- *Can you engage local suppliers and support them to participate in procurement?*

# How to get involved

*The outcomes we're committing to will only be achieved if they're considered early and owned across our WHOLE supply chain!*



**Project Delivery**



- *Are you actively tracking your performance against our supplier/contractor requirements?*
- *Is the right data being captured, both in terms of quantity and quality?*
- *Are you sharing lessons and ensuring they are being learnt for future projects?*
- *Are you effectively embedding best practice across our sites? If so, are you sharing with us?*

# How to get involved

*The outcomes we're committing to will only be achieved if they're considered early and owned across our **WHOLE** supply chain!*

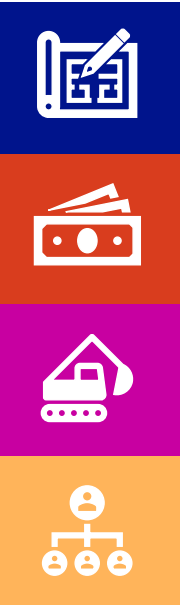
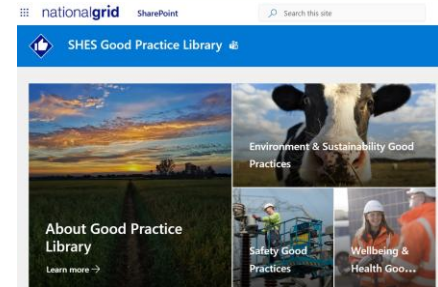


- *Are you getting the necessary support from us around T3 objectives and targets?*
- *Is there an opportunity that is currently unrealised that you think would be beneficial in helping us achieve our ambitions?*
- *Are you aware of our various forums across NGET and the opportunities you have to share lessons and showcase best practice?*

# How to get involved

...but where can you start?

- Familiarise yourself with the themes in the SEAP
- Understand which projects are captured in the T3 period
- Check out examples of good environmental practice and social value in the SHES Good Practice Library and share your own
- Keep up to date with the SHES Learning and Communications Portal



# ...and if you're in any doubt...ASK

We would also value working in close partnership with our communities, customers, employees, investors, and suppliers, and welcome their perspectives. Our Social and Environmental Action Plan is a collaborative programme, so we need your feedback to make sure we are focusing on the right areas and delivering the right results.

**If you would like to contact us about any aspect of our Action Plan, please email [box.ET.Environmental@nationalgrid.com](mailto:box.ET.Environmental@nationalgrid.com).**

## Contact us

We will share updates, successes and insights along the way on our website.

We would also value working in close partnership with our communities, customers, employees, investors, and suppliers, and welcome their perspectives. Our Social and Environmental Action Plan is a collaborative programme, so we need your feedback to make sure we are focusing on the right areas and delivering the right results.

If you would like to contact us about any aspect of our Action Plan, please email [.box.ET.Environmental@nationalgrid.com](mailto:box.ET.Environmental@nationalgrid.com).

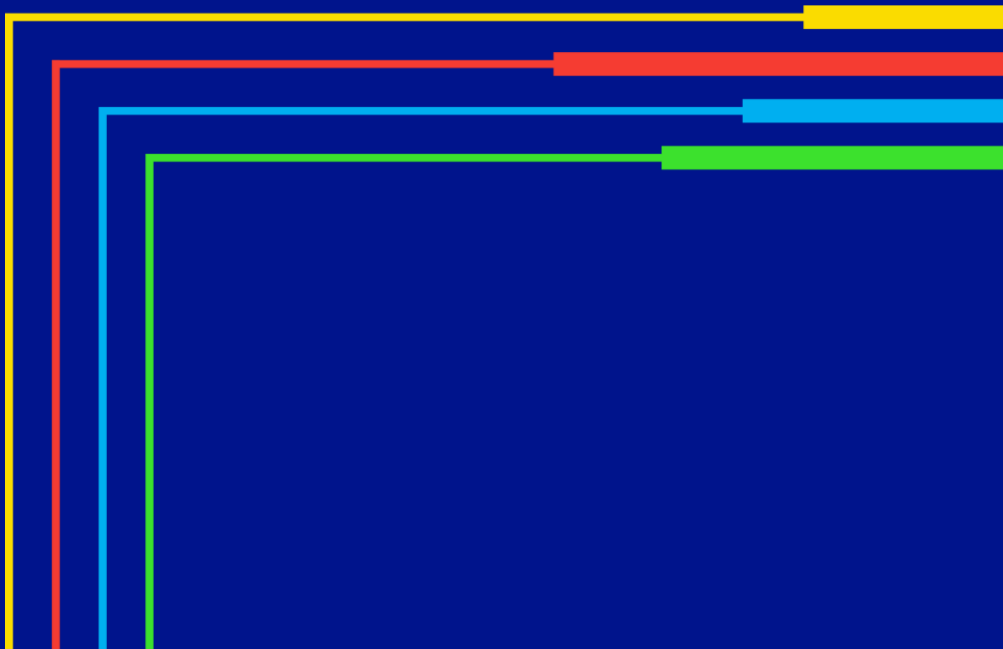
ers, and

nd

ction Plan,

# 5

## Q&A



## **Poll # 3 - After today's session, how clear are you on what the Social and Environmental Action Plan means for how we work together?**

- 1. Very clear**
- 2. Fairly clear**
- 3. Somewhat clear**
- 4. Still unclear**



# Question?

Our Social and Environmental Action Plan is a collaborative programme, so we need your feedback to make sure we are focusing on the right areas and delivering the right results

If you would like to contact us about any aspect of our Action Plan, please email

[box.ET.Environmental@nationalgrid.com](mailto:box.ET.Environmental@nationalgrid.com).



national**grid**