

Eastern Green Link 5 (EGL5)

# English Offshore Scheme General Arrangement Plans

May 2026

To assist with understanding these drawings please see the  
**Guide to Consultation Documents and Drawings**

nationalgrid

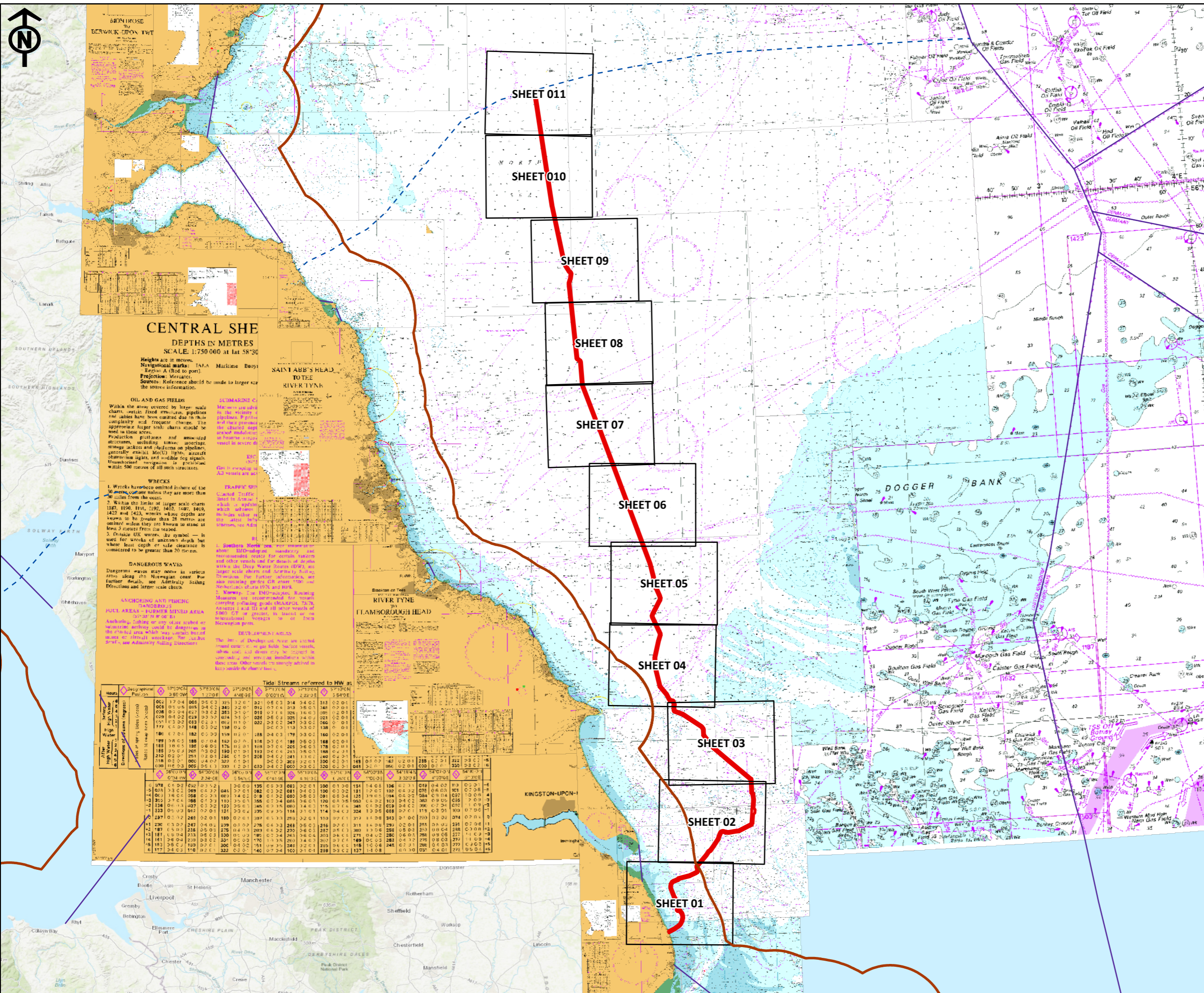
# Contents

## English Offshore Scheme General Arrangement Plans

<b>Plan Title</b>	<b>Section No.</b>
Offshore Key Plan	01
Offshore General Arrangement (Sheets 1-11)	02

## 01. Offshore Key Plan

Drawing category	Plan Title	Drawing Reference
English Offshore Scheme General Arrangement Plans	Offshore Key Plan	EGL5-NGET-MAR-XX-DG-YM-012



- Legend**
- Scotland Adjacent Waters Limit
  - 12NM Limit
  - EEZ
  - Draft Order Limits

**CENTRAL SHE**  
DEPTHS IN METRES  
SCALE: 1:750 000 at lat 58°30'

Heights are in metres.  
Navigational marks: IALA Maritime Buoyage System A (Red to port).  
Projection: Mercator.  
Sources: Reference should be made to larger scale sources for information.

**OIL AND GAS FIELDS**  
Within the areas covered by larger scale charts, certain fixed structures, pipelines and cables have been omitted due to their complexity and frequency. Charts of the appropriate larger scale charts should be used in these areas.  
Production platforms and associated structures, including towers, support structures, windmills and chimneys on platforms, generally exhibit MoU lights, aircraft obstruction lights, and audible fog signals. Measurements are given in metres within 500 metres of all such structures.

**WRECKS**  
1. Wrecks have been omitted where the depth is more than 30 metres from the coast.  
2. Within the limits of larger scale charts, wrecks are shown where depths are known to be greater than 20 metres, are omitted unless they are known to stand at less than 3 metres from the seabed.  
3. Orange UK wrecks - see symbol - is used for wrecks of unknown depth but whose least depth of safe clearance is considered to be greater than 20 metres.

**DANGEROUS WAVES**  
Dangerous waves may occur at various times along the Norwegian coast. For further details, see Admiralty Sailing Directions and larger scale charts.

**ANCHORING AND PILING DANGERS**  
**ANCHORING DANGERS**  
Anchoring cables or any other cables used in the vicinity of wrecks may be dangerous to the vessel. See Admiralty Sailing Directions and larger scale charts.

**ANCHORING AND PILING DANGERS**  
**PILING DANGERS**  
Anchoring cables or any other cables used in the vicinity of wrecks may be dangerous to the vessel. See Admiralty Sailing Directions and larger scale charts.

Tidal Streams referred to HW as:

Area	Direction	Force
001	001	001
002	002	002
003	003	003
004	004	004
005	005	005
006	006	006
007	007	007
008	008	008
009	009	009
010	010	010
011	011	011
012	012	012
013	013	013
014	014	014
015	015	015
016	016	016
017	017	017
018	018	018
019	019	019
020	020	020
021	021	021
022	022	022
023	023	023
024	024	024
025	025	025
026	026	026
027	027	027
028	028	028
029	029	029
030	030	030
031	031	031
032	032	032
033	033	033
034	034	034
035	035	035
036	036	036
037	037	037
038	038	038
039	039	039
040	040	040

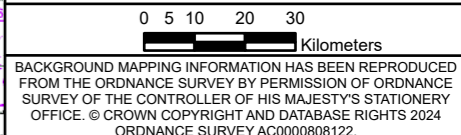
**Notes**

This drawing is scaled at paper size A3, therefore any prints taken at smaller sizes will affect accuracy of the measurement units and should not be scaled against.

Additional Copyright - Inset: World Topographic Map: Esri, HERE, Garmin, FAO, USGS, NGA  
World Topographic Map: Esri, HERE, Garmin, FAO, NOAA,



Coordinate System: British National Grid  
Sheet X Centroid Coordinate: 528669.64E Sheet Y Centroid Coordinate: 560414.16N



BACKGROUND MAPPING INFORMATION HAS BEEN REPRODUCED FROM THE ORDNANCE SURVEY BY PERMISSION OF ORDNANCE SURVEY OF THE CONTROLLER OF HIS MAJESTY'S STATIONERY OFFICE. © CROWN COPYRIGHT AND DATABASE RIGHTS 2024 ORDNANCE SURVEY AC0000808122.

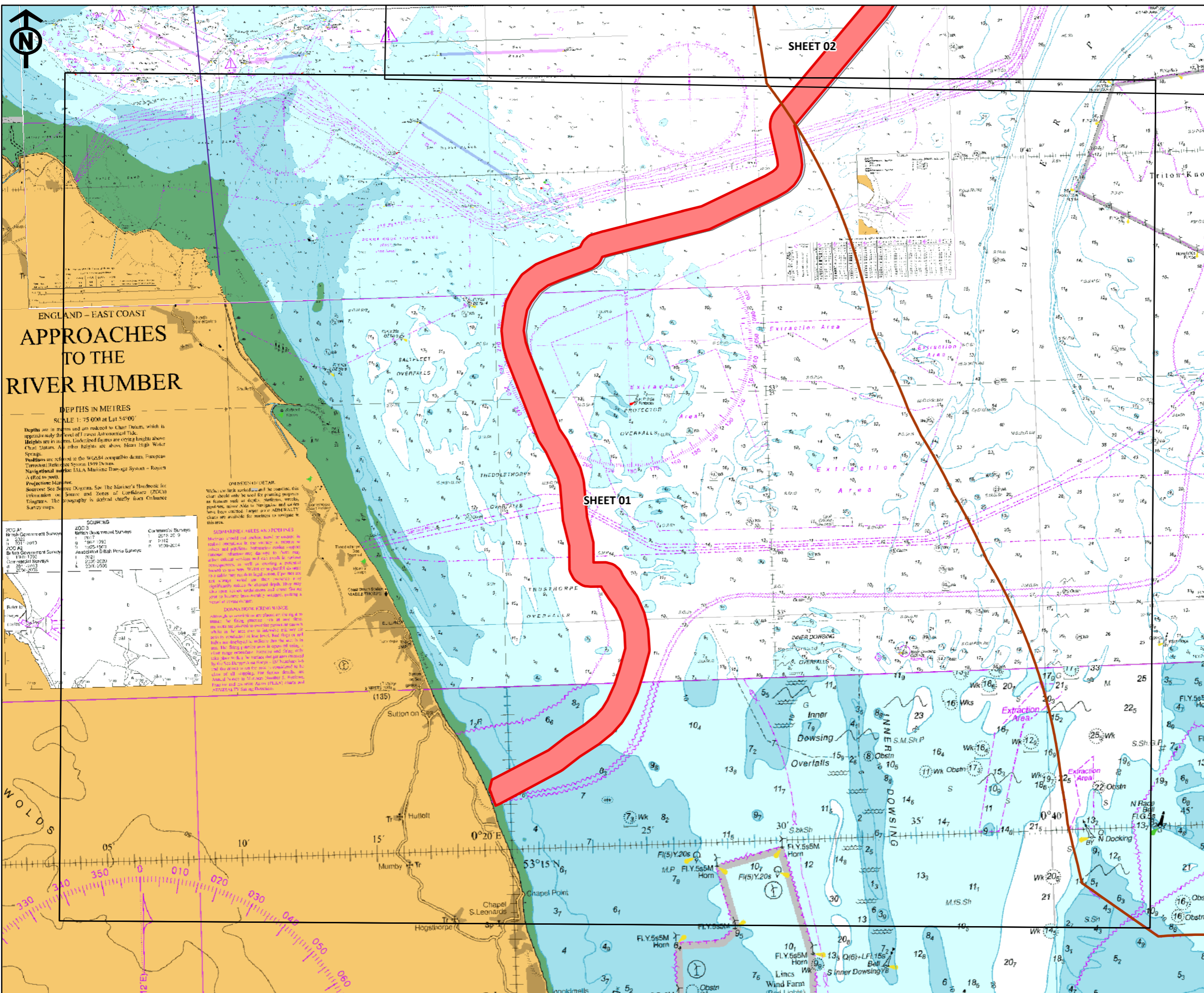
Issue	Date	Remarks	Drawn	Checked	Approved
1	MAY 26	First Issue	BK	AJ	CM

**OFFSHORE GENERAL ARRANGEMENT PLAN SERIES FOR CONSULTATION**

<b>nationalgrid</b>			
Figure Number	MASTER KEY PLAN		
Drawing Reference	EGL-NGET-MAR-XX-DG-YM-012		
Scale	Sheet Size	Sheet	Issue
1:1,500,000	A3	Sheet 1 of 1	1

## 02. Offshore General Arrangement (Sheets 1-11)

Drawing category	Plan Title	Drawing Reference
English Offshore Scheme General Arrangement Plans	Offshore General Arrangements Sheet 1 of 11	EGL5-NGET-MAR-XX-DG-YM-001
	Offshore General Arrangements Sheet 2 of 11	EGL5-NGET-MAR-XX-DG-YM-002
	Offshore General Arrangements Sheet 3 of 11	EGL5-NGET-MAR-XX-DG-YM-003
	Offshore General Arrangements Sheet 4 of 11	EGL5-NGET-MAR-XX-DG-YM-004
	Offshore General Arrangements Sheet 5 of 11	EGL5-NGET-MAR-XX-DG-YM-005
	Offshore General Arrangements Sheet 6 of 11	EGL5-NGET-MAR-XX-DG-YM-006
	Offshore General Arrangements Sheet 7 of 11	EGL5-NGET-MAR-XX-DG-YM-007
	Offshore General Arrangements Sheet 8 of 11	EGL5-NGET-MAR-XX-DG-YM-008
	Offshore General Arrangements Sheet 9 of 11	EGL5-NGET-MAR-XX-DG-YM-009
	Offshore General Arrangements Sheet 10 of 11	EGL5-NGET-MAR-XX-DG-YM-010
	Offshore General Arrangements Sheet 11 of 11	EGL5-NGET-MAR-XX-DG-YM-011



# ENGLAND - EAST COAST APPROACHES TO THE RIVER HUMBER

DEPTHS IN METRES  
SCALE 1:75 000 at Lat 54°00'

Depths are in metres and are reduced to Chart Datum, which is approximately the level of Lowest Astronomical Tide. Heights are in metres. Uncharted figures are sowing heights above Chart Datum. All other heights are above Mean High Water Springs.

Positions are referred to the WGS84 compatible datum, European Terrestrial Reference System 1989 Datum.

Navigational marks: IALA Maritime Buoyage System - Region A (Red to port).

Projection: Mercator.

Source: Sea Survey Division. See The Mariner's Handbook for information on Sounding and Zones of Confidence (ZOCs) Diagrams. The geography is derived chiefly from Ordnance Survey maps.

**SOURCES**

2000 AD	2000 S	Charted Surveys
British Government Surveys	British Government Surveys	Charted Surveys
1 1917	1 1917	1 2015 00 9
2 1921	2 1921	2 1912
3 1925-1927	3 1925-1927	3 1928-2014
4 1928-1931	4 1928-1931	
5 1932	5 1932	
6 1933-1934	6 1933-1934	
7 1935-1936	7 1935-1936	
8 1937-1938	8 1937-1938	
9 1939-1940	9 1939-1940	
10 1941-1942	10 1941-1942	
11 1943-1944	11 1943-1944	
12 1945-1946	12 1945-1946	
13 1947-1948	13 1947-1948	
14 1949-1950	14 1949-1950	
15 1951-1952	15 1951-1952	
16 1953-1954	16 1953-1954	
17 1955-1956	17 1955-1956	
18 1957-1958	18 1957-1958	
19 1959-1960	19 1959-1960	
20 1961-1962	20 1961-1962	
21 1963-1964	21 1963-1964	
22 1965-1966	22 1965-1966	
23 1967-1968	23 1967-1968	
24 1969-1970	24 1969-1970	
25 1971-1972	25 1971-1972	
26 1973-1974	26 1973-1974	
27 1975-1976	27 1975-1976	
28 1977-1978	28 1977-1978	
29 1979-1980	29 1979-1980	
30 1981-1982	30 1981-1982	
31 1983-1984	31 1983-1984	
32 1985-1986	32 1985-1986	
33 1987-1988	33 1987-1988	
34 1989-1990	34 1989-1990	
35 1991-1992	35 1991-1992	
36 1993-1994	36 1993-1994	
37 1995-1996	37 1995-1996	
38 1997-1998	38 1997-1998	
39 1999-2000	39 1999-2000	
40 2001-2002	40 2001-2002	
41 2003-2004	41 2003-2004	
42 2005-2006	42 2005-2006	
43 2007-2008	43 2007-2008	
44 2009-2010	44 2009-2010	
45 2011-2012	45 2011-2012	
46 2013-2014	46 2013-2014	
47 2015-2016	47 2015-2016	
48 2017-2018	48 2017-2018	
49 2019-2020	49 2019-2020	
50 2021-2022	50 2021-2022	

**OMISSIONS - DETAIL**

When the chart is used for planning purposes, as features such as depth, sounding, wrecks, ground, etc. are not shown, they have been omitted. It is the user's responsibility to check the chart for any features that may not be shown. The chart is not to be used for navigation purposes unless it is accompanied by the appropriate Notices to Mariners and other relevant information.

**SEAWORTHY - RALES AND SPECIMENS**

Seaworthy - Rales and Specimens are shown on this chart. They are not to be used for navigation purposes unless they are accompanied by the appropriate Notices to Mariners and other relevant information.

**DOMAINS UNDER OTHER JURISDICTION**

Domains under other jurisdiction are shown on this chart. They are not to be used for navigation purposes unless they are accompanied by the appropriate Notices to Mariners and other relevant information.

**Legend**

- █ Draft Order Limits
- █ 12NM Limit
- Scotland Adjacent Waters Limit
- EEZ

**Notes**

This drawing is scaled at paper size A3, therefore any prints taken at smaller sizes will affect accuracy of the measurement units and should not be scaled against.

Additional Copyright - Inset: Esri UK, Esri, HERE, Garmin, USGS, NGA, Sources: Esri, TomTom, Garmin, FAO, NOAA, USGS, © OpenStreetMap contributors, and the GIS User



Coordinate System: British National Grid  
Sheet X Centroid Coordinate: 599590.64E Sheet Y Centroid Coordinate: 389497.46N

0 10 20 30  
Kilometers

BACKGROUND MAPPING INFORMATION HAS BEEN REPRODUCED FROM THE ORDNANCE SURVEY BY PERMISSION OF ORDNANCE SURVEY OF THE CONTROLLER OF HIS MAJESTY'S STATIONERY OFFICE. © CROWN COPYRIGHT AND DATABASE RIGHTS 2024 ORDNANCE SURVEY AC0000808122.

1	April 2026	FIRST ISSUE	BK	AJ	CM
Issue	Date	Remarks	Drawn	Checked	Approved

**OFFSHORE GENERAL  
ARRANGEMENT PLAN  
SERIES FOR CONSULTATION**

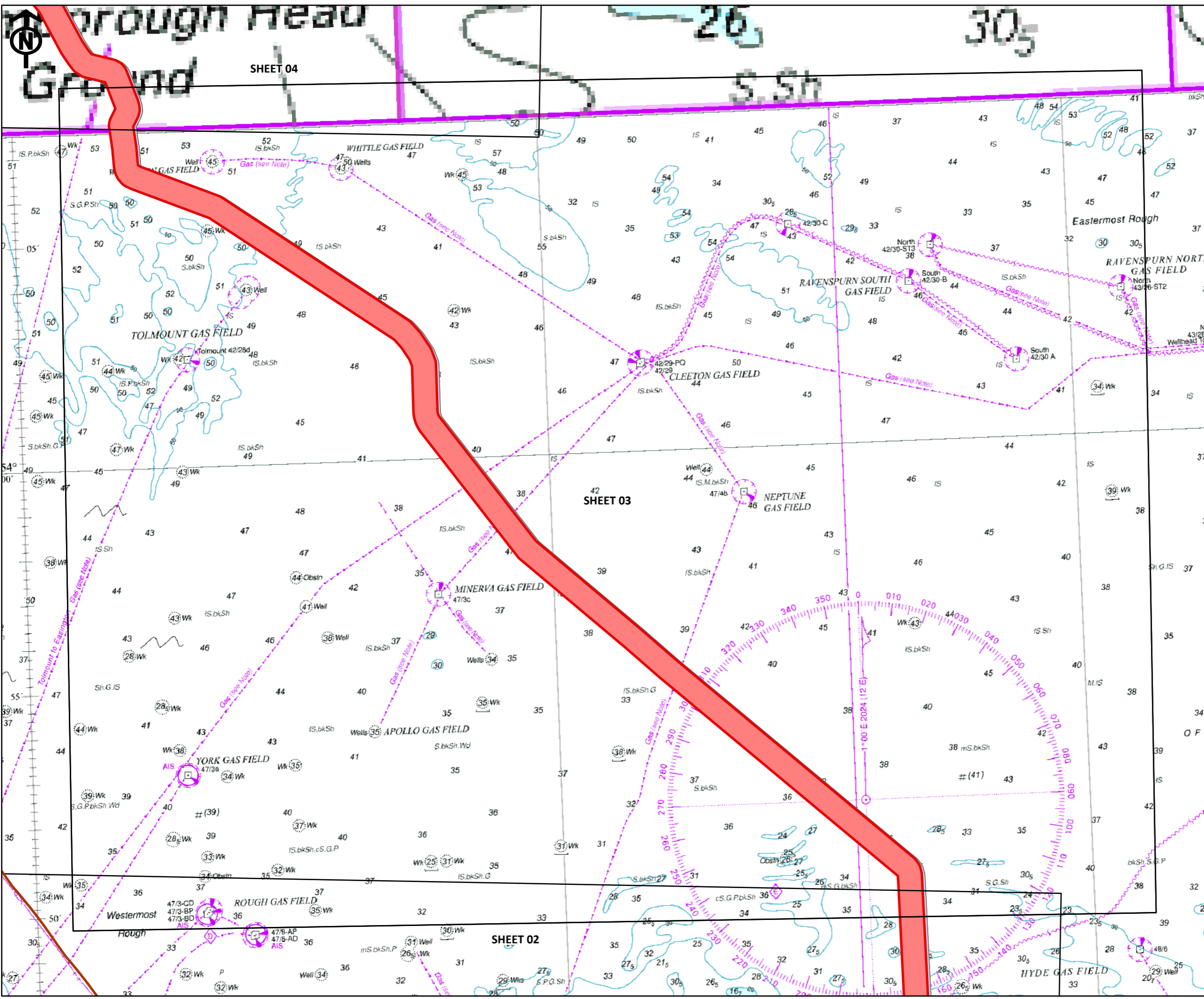
**nationalgrid**

Figure Number: Sheet 1 of 11

Drawing Reference: EGL5-NGET-MAR-XX-DG-0M-001

Scale	Sheet Size	Sheet	Issue
1:146,000	A3	Sheet 1 of 11	01





**Legend**

- █ Draft Order Limits
- █ 12NM Limit
- - - Scotland Adjacent Waters Limit
- █ EEZ

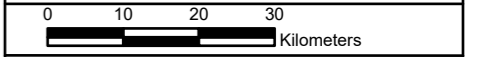
**Notes**

This drawing is scaled at paper size A3, therefore any prints taken at smaller sizes will affect accuracy of the measurement units and should not be scaled against.

Additional Copyright - Inset: Esri UK, Esri, HERE, Garmin, USGS, NGA, Sources: Esri, TomTom, Garmin, FAO, NOAA, USGS, © OpenStreetMap contributors, and the GIS User



Coordinate System: British National Grid  
 Sheet X Centroid Coordinate: 577188.36E Sheet Y Centroid Coordinate: 457359.58N



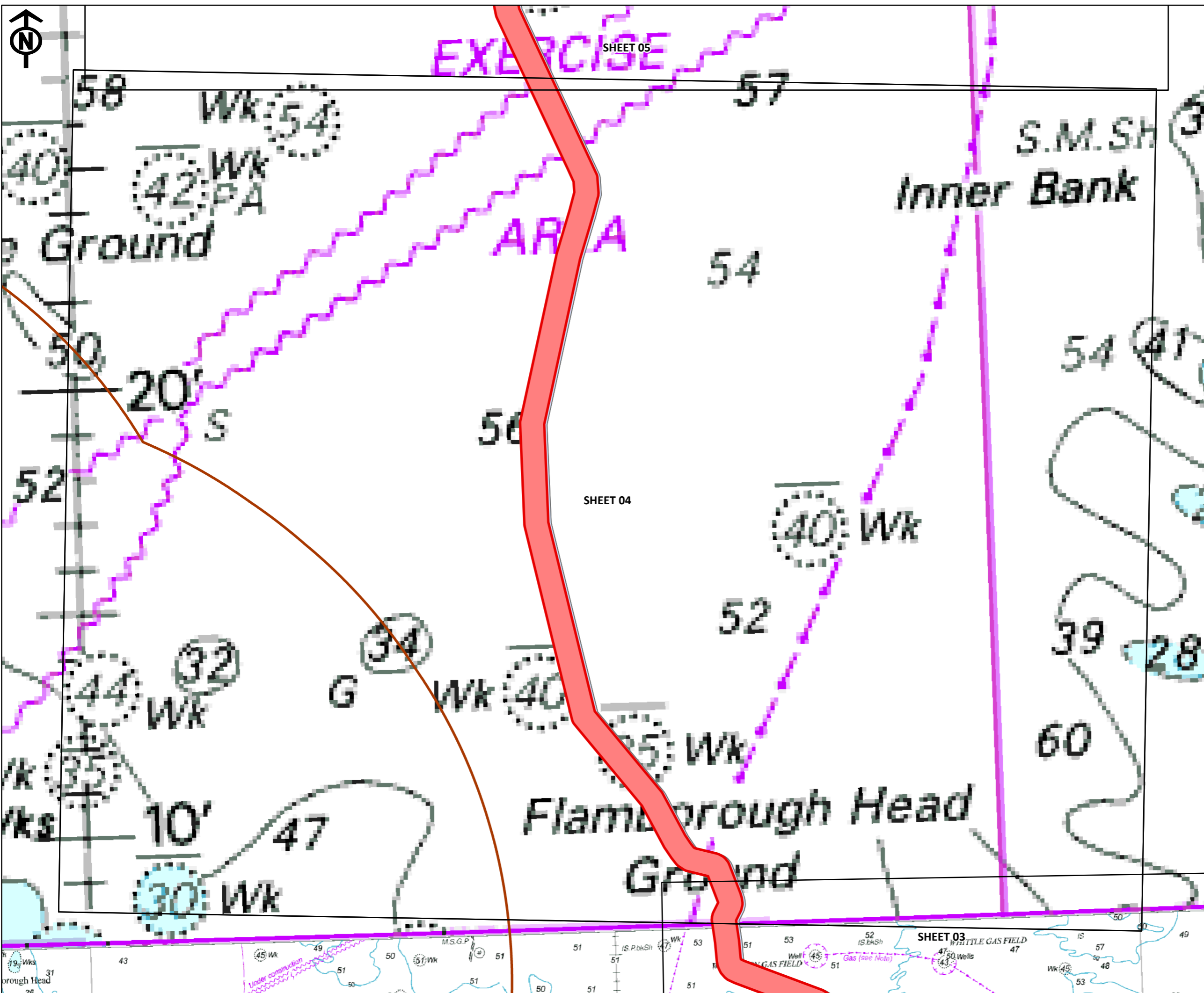
BACKGROUND MAPPING INFORMATION HAS BEEN REPRODUCED FROM THE ORDNANCE SURVEY BY PERMISSION OF ORDNANCE SURVEY OF THE CONTROLLER OF HIS MAJESTY'S STATIONERY OFFICE. © CROWN COPYRIGHT AND DATABASE RIGHTS 2024 ORDNANCE SURVEY AC0000808122.

1	April 2026	FIRST ISSUE	BK	AJ	CM
Issue	Date	Remarks	Drawn	Checked	Approved

**Title**

OFFSHORE GENERAL ARRANGEMENT PLAN SERIES FOR CONSULTATION

<b>nationalgrid</b>			
Figure Number	Sheet 3 of 11		
Drawing Reference	EGL5-NGET-MAR-XX-DG-YM-003		
Scale	Sheet Size	Sheet	Issue
1:147,000	A3	Sheet 3 of 11	01



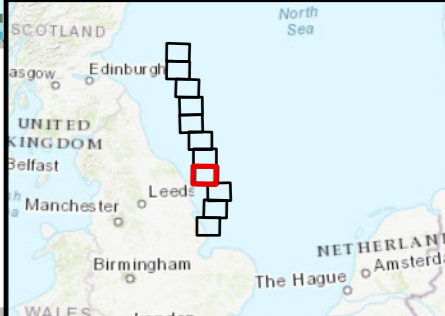
**Legend**

- Draft Order Limits
- 12NM Limit
- Scotland Adjacent Waters Limit
- EEZ

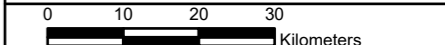
**Notes**

This drawing is scaled at paper size A3, therefore any prints taken at smaller sizes will affect accuracy of the measurement units and should not be scaled against.

Additional Copyright - Inset: Esri UK, Esri, HERE, Garmin, USGS, NGA, Sources: Esri, TomTom, Garmin, FAO, NOAA, USGS, © OpenStreetMap contributors, and the GIS User



Coordinate System: British National Grid  
 Sheet X Centroid Coordinate: 552145.97E Sheet Y Centroid Coordinate: 490352.16N



BACKGROUND MAPPING INFORMATION HAS BEEN REPRODUCED FROM THE ORDNANCE SURVEY BY PERMISSION OF ORDNANCE SURVEY OF THE CONTROLLER OF HIS MAJESTY'S STATIONERY OFFICE. © CROWN COPYRIGHT AND DATABASE RIGHTS 2024 ORDNANCE SURVEY AC0000808122.

1	April 2026	FIRST ISSUE	BK	AJ	CM
Issue	Date	Remarks	Drawn	Checked	Approved

**Title**

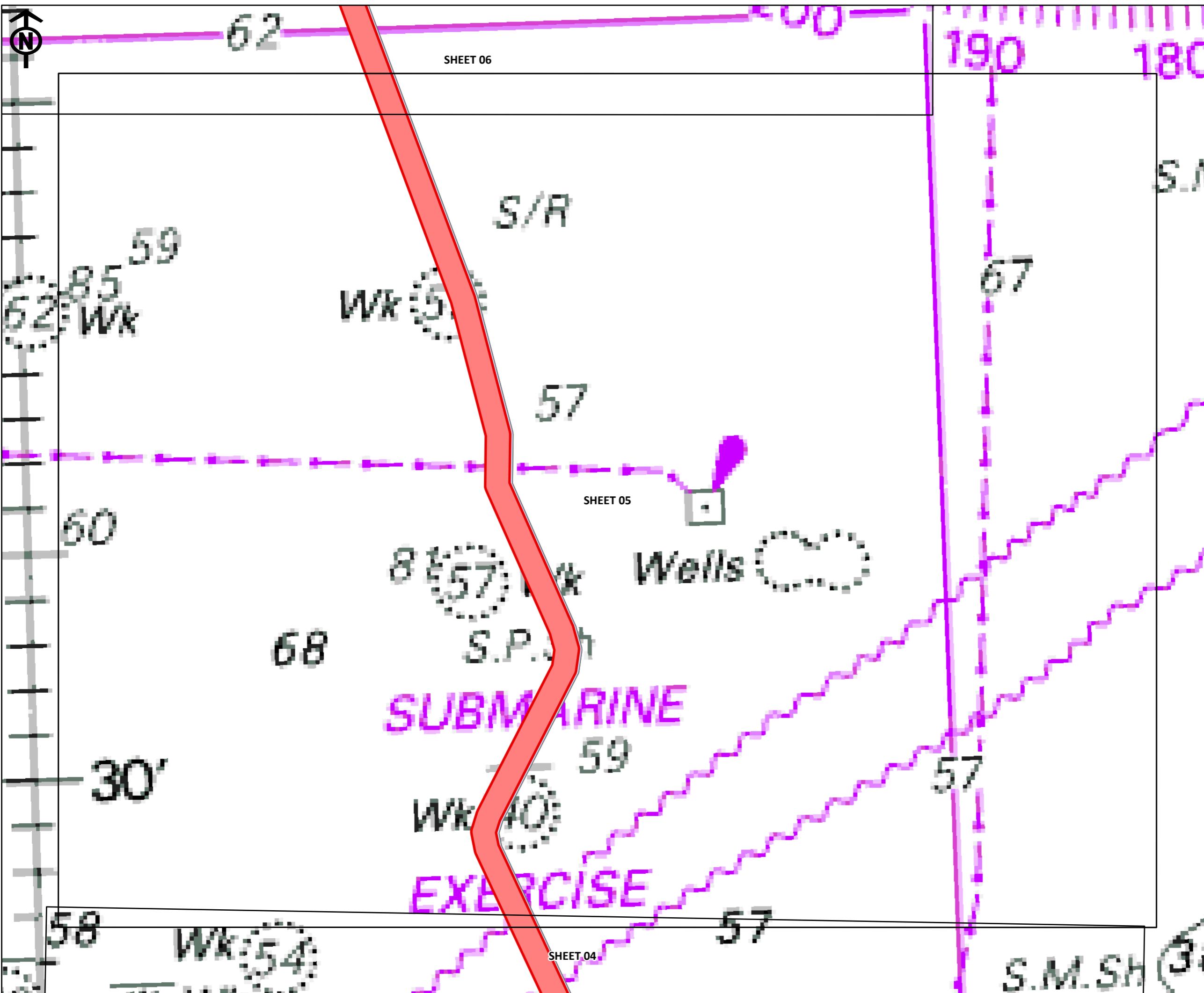
OFFSHORE GENERAL ARRANGEMENT PLAN SERIES FOR CONSULTATION

**nationalgrid**

Figure Number: Sheet 4 of 11

Drawing Reference: EGL5-NGET-MAR-XX-DG-YM-004

Scale	Sheet Size	Sheet	Issue
1:147,000	A3	Sheet 4 of 11	01



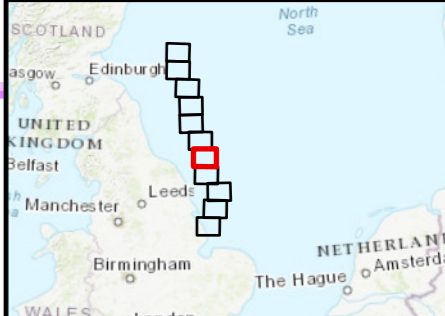
**Legend**

- Draft Order Limits
- 12NM Limit
- Scotland Adjacent Waters Limit
- EEZ

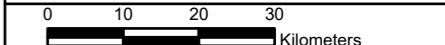
**Notes**

This drawing is scaled at paper size A3, therefore any prints taken at smaller sizes will affect accuracy of the measurement units and should not be scaled against.

Additional Copyright - Inset: Esri UK, Esri, HERE, Garmin, USGS, NGA, Sources: Esri, TomTom, Garmin, FAO, NOAA, USGS, © OpenStreetMap contributors, and the GIS User



Coordinate System: British National Grid  
 Sheet X Centroid Coordinate: 552942.43E Sheet Y Centroid Coordinate: 524907.36N



BACKGROUND MAPPING INFORMATION HAS BEEN REPRODUCED FROM THE ORDNANCE SURVEY BY PERMISSION OF ORDNANCE SURVEY OF THE CONTROLLER OF HIS MAJESTY'S STATIONERY OFFICE. © CROWN COPYRIGHT AND DATABASE RIGHTS 2024 ORDNANCE SURVEY AC0000808122.

1	April 2026	FIRST ISSUE	BK	AJ	CM
Issue	Date	Remarks	Drawn	Checked	Approved

**Title**

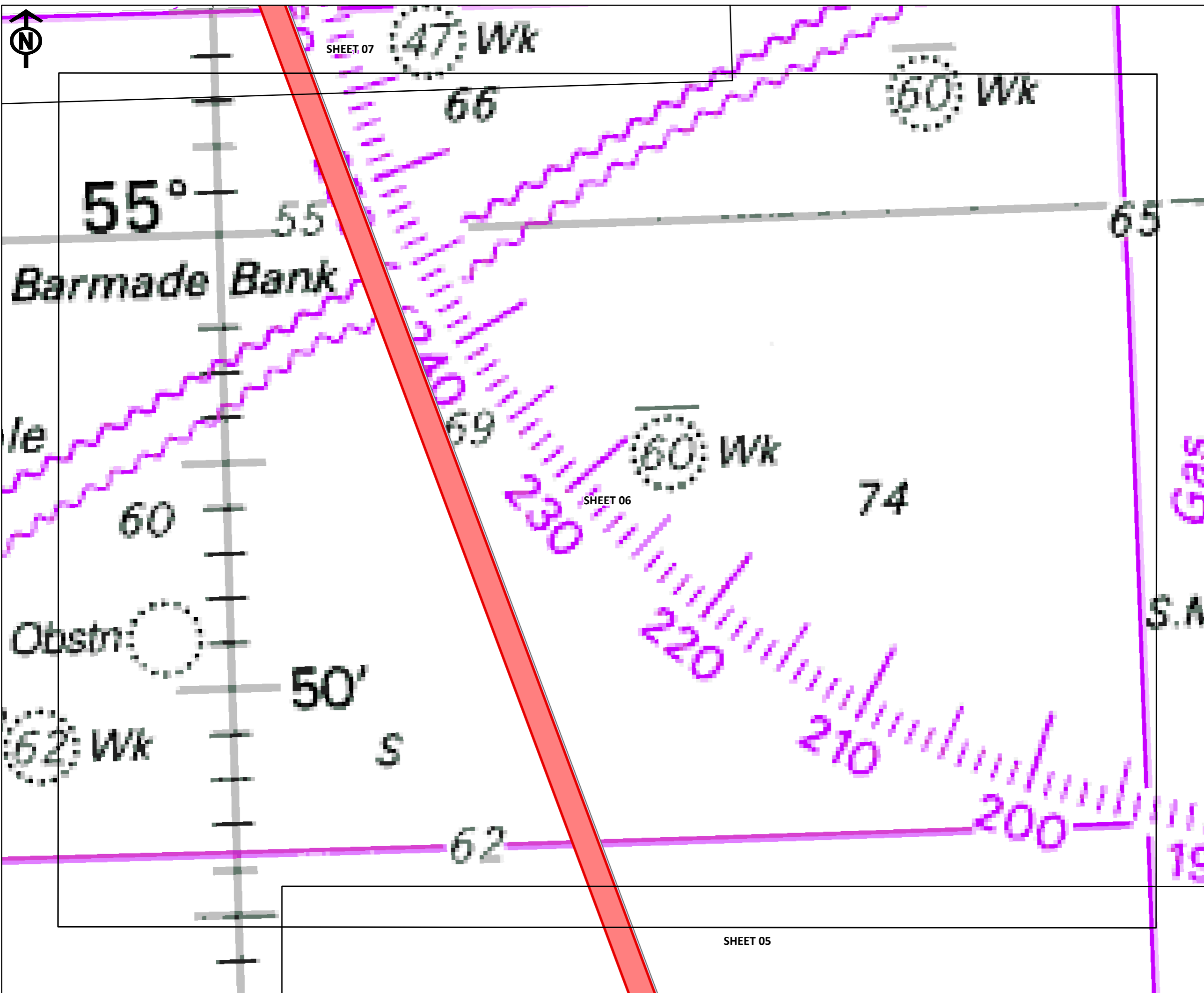
OFFSHORE GENERAL  
ARRANGEMENT PLAN  
SERIES FOR CONSULTATION

**nationalgrid**

Figure Number: Sheet 5 of 11

Drawing Reference: EGL5-NGET-MAR-XX-DG-YM-005

Scale	Sheet Size	Sheet	Issue
1:145,000	A3	Sheet 5 of 11	01



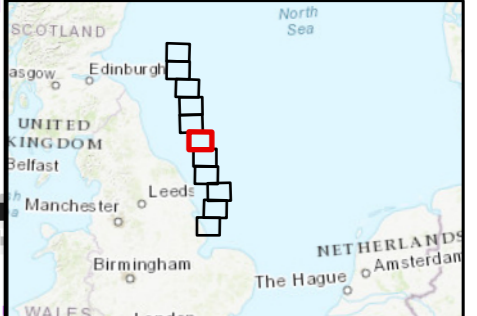
**Legend**

- █ Draft Order Limits
- 12NM Limit
- - - Scotland Adjacent Waters Limit
- EEZ

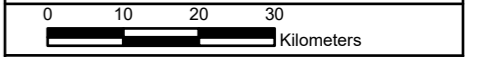
**Notes**

This drawing is scaled at paper size A3, therefore any prints taken at smaller sizes will affect accuracy of the measurement units and should not be scaled against.

Additional Copyright - Inset: Esri UK, Esri, HERE, Garmin, USGS, NGA, Sources: Esri, TomTom, Garmin, FAO, NOAA, USGS, © OpenStreetMap contributors, and the GIS User



Coordinate System: British National Grid  
 Sheet X Centroid Coordinate: 543787.74E Sheet Y Centroid Coordinate: 556230.34N



BACKGROUND MAPPING INFORMATION HAS BEEN REPRODUCED FROM THE ORDNANCE SURVEY BY PERMISSION OF ORDNANCE SURVEY OF THE CONTROLLER OF HIS MAJESTY'S STATIONERY OFFICE. © CROWN COPYRIGHT AND DATABASE RIGHTS 2024 ORDNANCE SURVEY AC0000808122.

Issue	Date	Remarks	Drawn	Checked	Approved
1	April 2026	FIRST ISSUE	BK	AJ	CM

**Title**

OFFSHORE GENERAL ARRANGEMENT PLAN SERIES FOR CONSULTATION

**nationalgrid**

**Figure Number** Sheet 6 of 11

**Drawing Reference** EGL5-NGET-MAR-XX-DG-YM-006

Scale	Sheet Size	Sheet	Issue
1:145,000	A3	Sheet 6 of 11	01



which is  
Region A  
hydrographic  
the Source  
the sources

AND PIPELINES  
anchor or trawl in  
bles and pipelines.  
buried and their  
reduce the charted  
seabed undulations  
come irrecoverably  
severe danger.

**FIRING PRACTICE AREAS**  
No restrictions are placed on the right to transit  
the firing practice areas at any time. The firing  
practice areas are operated using a clear range  
procedure: exercises and firing only take place  
when the areas are considered to be clear of all  
shipping.

Tidal Streams referred to HW at DOVER

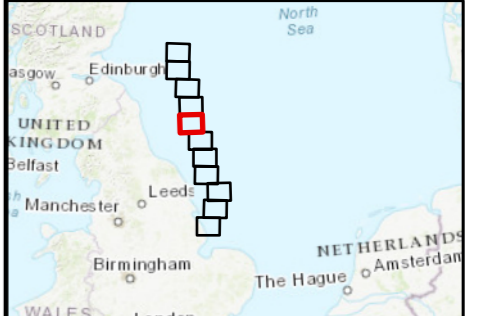
00°0'0" N 34°1' W	<b>B</b> 55°10'0" N 0°01'9" E	<b>C</b> 56°00'0" N 0°25'9" E	<b>D</b> 55°10'0" N 0°41'9" E	<b>E</b> 56°00'0" N 1°13'9" E	<b>F</b> 55°10'0" N 1°49'9" E	<b>G</b> 56°00'0" N 2°23'9" E							
4 0.2	132	0.6 0.3	078	0.3 0.2	135	0.6 0.3	095	0.3 0.2	122	0.6 0.3	092	0.3 0.2	-6
3 0.2	081	0.3 0.2	037	0.4 0.2	082	0.3 0.2	062	0.4 0.2	065	0.5 0.3	069	0.4 0.2	-5
6 0.4	004	0.4 0.2	015	0.6 0.4	019	0.4 0.2	032	0.5 0.3	046	0.5 0.3	058	0.5 0.3	-4
7 0.4	353	0.8 0.4	002	0.7 0.4	355	0.7 0.4	007	0.6 0.3	037	0.5 0.3	055	0.4 0.3	-3
6 0.3	327	0.9 0.5	359	0.7 0.4	345	0.9 0.5	359	0.5 0.3	014	0.3 0.2	037	0.3 0.2	-2
5 0.3	330	0.9 0.5	344	0.5 0.3	335	0.9 0.5	355	0.4 0.2	332	0.3 0.2	012	0.2 0.1	-1
3 0.2	318	0.6 0.3	303	0.1 0.1	307	0.6 0.3	295	0.2 0.1	304	0.4 0.2	269	0.2 0.1	0
3 0.2	282	0.3 0.2	234	0.3 0.2	275	0.4 0.3	230	0.3 0.2	269	0.5 0.3	247	0.4 0.2	+1
5 0.3	177	0.3 0.2	193	0.7 0.4	203	0.4 0.2	214	0.6 0.3	233	0.5 0.3	236	0.5 0.3	+2
6 0.4	169	0.8 0.5	192	0.7 0.4	185	0.7 0.4	208	0.6 0.4	223	0.6 0.3	233	0.5 0.3	+3
6 0.4	156	1.0 0.6	180	0.7 0.4	170	1.0 0.5	196	0.6 0.3	187	0.4 0.2	230	0.3 0.2	+4
5 0.3	142	0.8 0.5	160	0.5 0.3	151	0.9 0.5	180	0.4 0.2	144	0.3 0.2	180	0.2 0.1	+5
4 0.3	132	0.7 0.4	133	0.3 0.2	140	0.7 0.4	140	0.2 0.1	139	0.6 0.3	110	0.2 0.1	+6

For tidal data see Co-Tidal Charts 5058 and 5059.

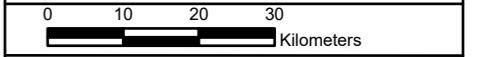
**Legend**

- █ Draft Order Limits
- 12NM Limit
- - - Scotland Adjacent Waters Limit
- EEZ

**Notes**  
This drawing is scaled at paper size A3, therefore any prints taken at smaller sizes will affect accuracy of the measurement units and should not be scaled against.  
Additional Copyright - Inset: Esri UK, Esri, HERE, Garmin, USGS, NGA, Sources: Esri, TomTom, Garmin, FAO, NOAA, USGS, © OpenStreetMap contributors, and the GIS User



Coordinate System: British National Grid  
Sheet X Centroid Coordinate: 525867.6E Sheet Y Centroid Coordinate: 592218.67N



BACKGROUND MAPPING INFORMATION HAS BEEN REPRODUCED FROM THE ORDNANCE SURVEY BY PERMISSION OF ORDNANCE SURVEY OF THE CONTROLLER OF HIS MAJESTY'S STATIONERY OFFICE. © CROWN COPYRIGHT AND DATABASE RIGHTS 2024 ORDNANCE SURVEY AC0000808122.

1	April 2026	FIRST ISSUE	BK	AJ	CM
Issue	Date	Remarks	Drawn	Checked	Approved

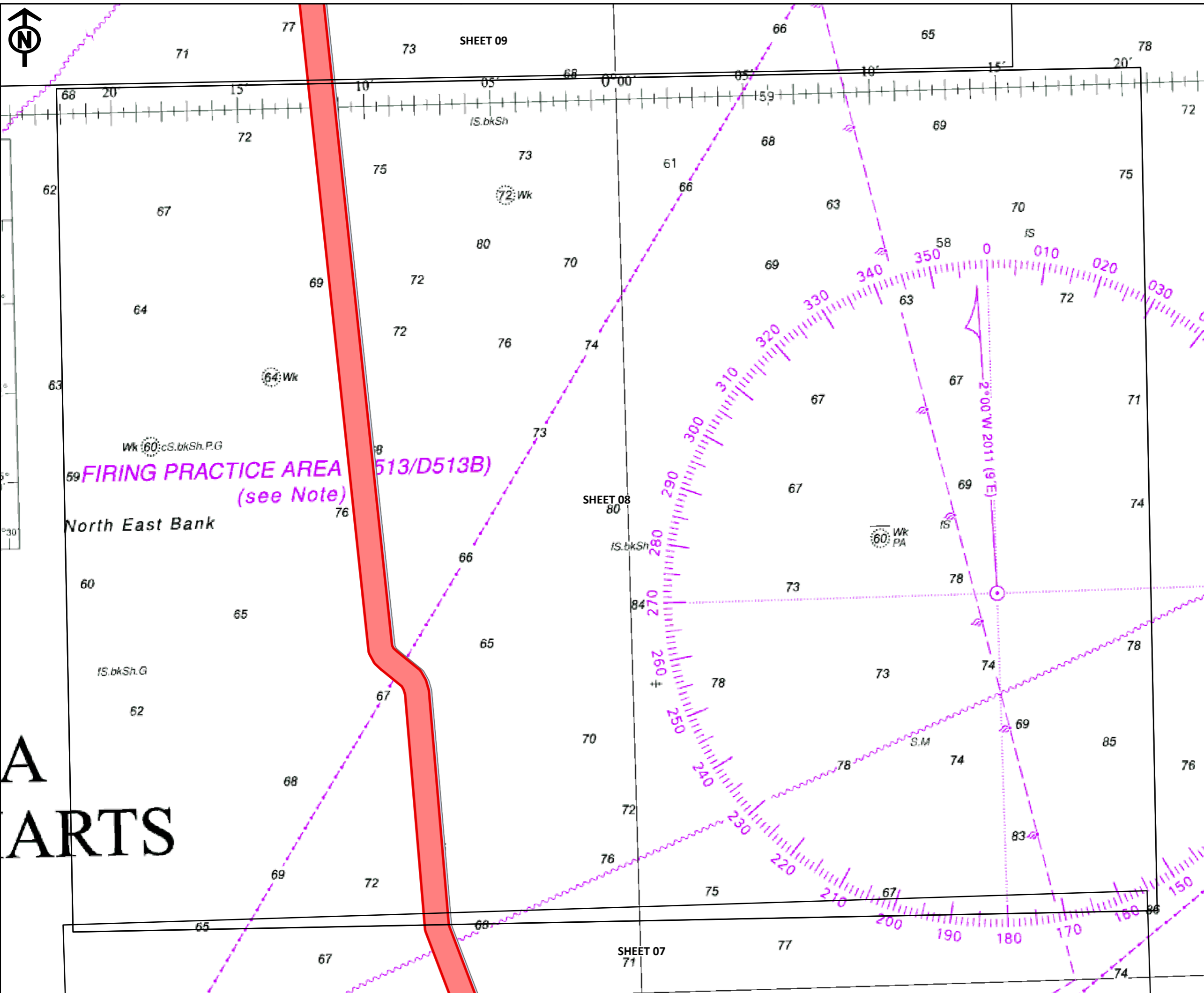
**OFFSHORE GENERAL ARRANGEMENT PLAN SERIES FOR CONSULTATION**



Figure Number: Sheet 7 of 11

Drawing Reference: EGL5-NGET-MAR-XX-DG-YM-007

Scale	Sheet Size	Sheet	Issue
1:149,000	A3	Sheet 7 of 11	01

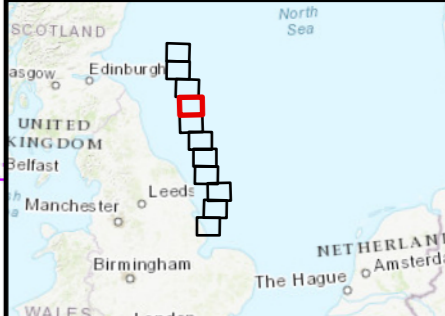


- Legend**
- Draft Order Limits
  - 12NM Limit
  - Scotland Adjacent Waters Limit
  - EEZ

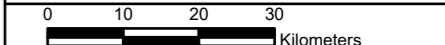
**Notes**

This drawing is scaled at paper size A3, therefore any prints taken at smaller sizes will affect accuracy of the measurement units and should not be scaled against.

Additional Copyright - Inset: Esri UK, Esri, HERE, Garmin, USGS, NGA, Sources: Esri, TomTom, Garmin, FAO, NOAA, USGS, © OpenStreetMap contributors, and the GIS User



Coordinate System: British National Grid  
 Sheet X Centroid Coordinate: 525387.36E Sheet Y Centroid Coordinate: 626645.99N



BACKGROUND MAPPING INFORMATION HAS BEEN REPRODUCED FROM THE ORDNANCE SURVEY BY PERMISSION OF ORDNANCE SURVEY OF THE CONTROLLER OF HIS MAJESTY'S STATIONERY OFFICE. © CROWN COPYRIGHT AND DATABASE RIGHTS 2024 ORDNANCE SURVEY AC0000808122.

1	April 2026	FIRST ISSUE	BK	AJ	CM
Issue	Date	Remarks	Drawn	Checked	Approved

**Title**

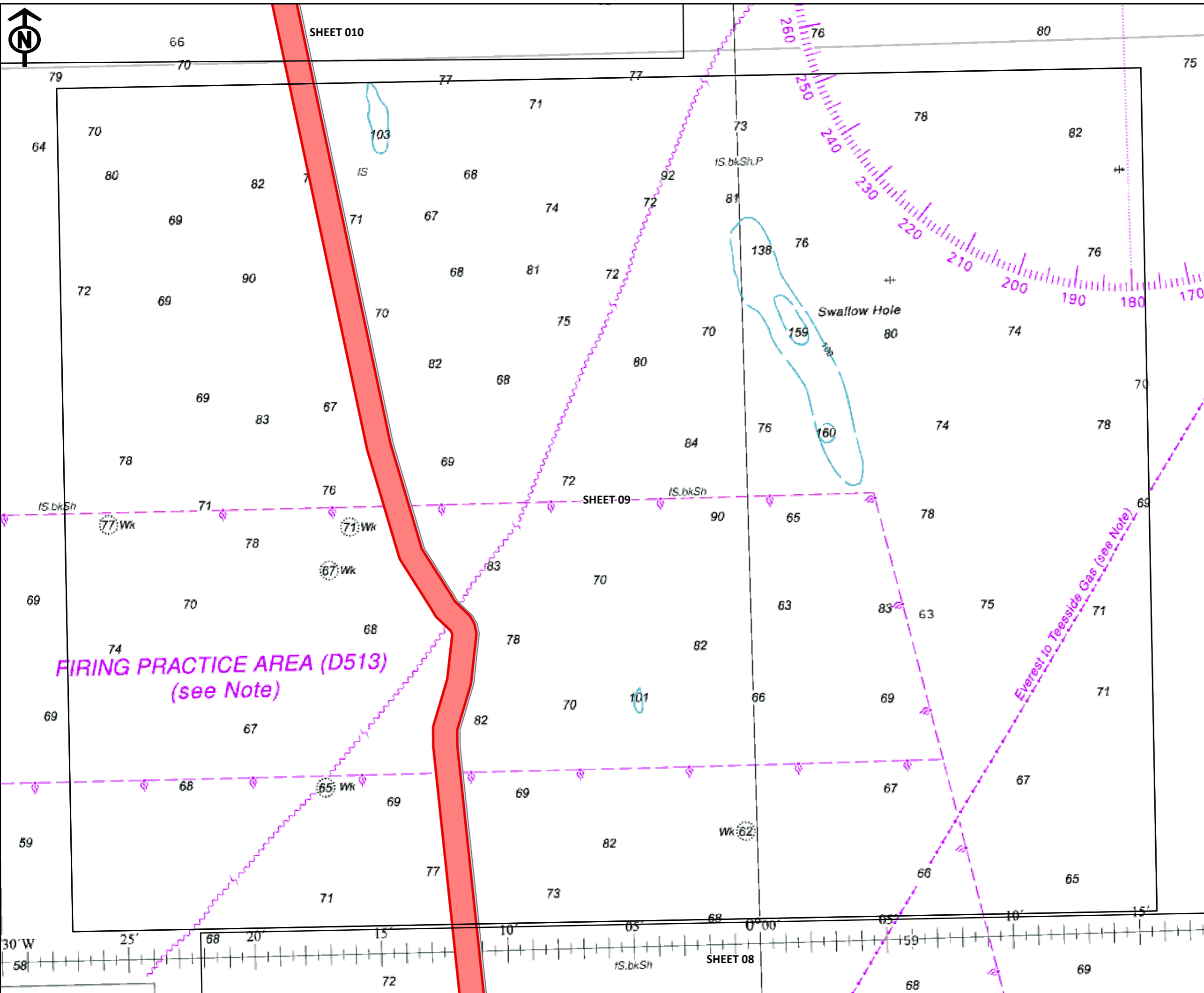
OFFSHORE GENERAL ARRANGEMENT PLAN SERIES FOR CONSULTATION

**nationalgrid**

Figure Number: Sheet 8 of 11

Drawing Reference: EGL5-NGET-MAR-XX-DG-YM-008

Scale	Sheet Size	Sheet	Issue
1:147,000	A3	Sheet 8 of 11	01



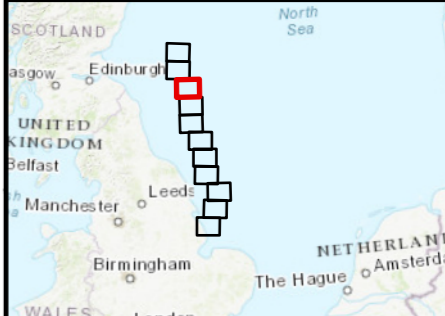
**Legend**

- Draft Order Limits
- 12NM Limit
- Scotland Adjacent Waters Limit
- EEZ

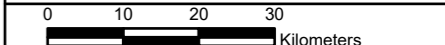
**Notes**

This drawing is scaled at paper size A3, therefore any prints taken at smaller sizes will affect accuracy of the measurement units and should not be scaled against.

Additional Copyright - Inset: Esri UK, Esri, HERE, Garmin, USGS, NGA, Sources: Esri, TomTom, Garmin, FAO, NOAA, USGS, © OpenStreetMap contributors, and the GIS User



Coordinate System: British National Grid  
 Sheet X Centroid Coordinate: 519399.9E Sheet Y Centroid Coordinate: 661679.6N



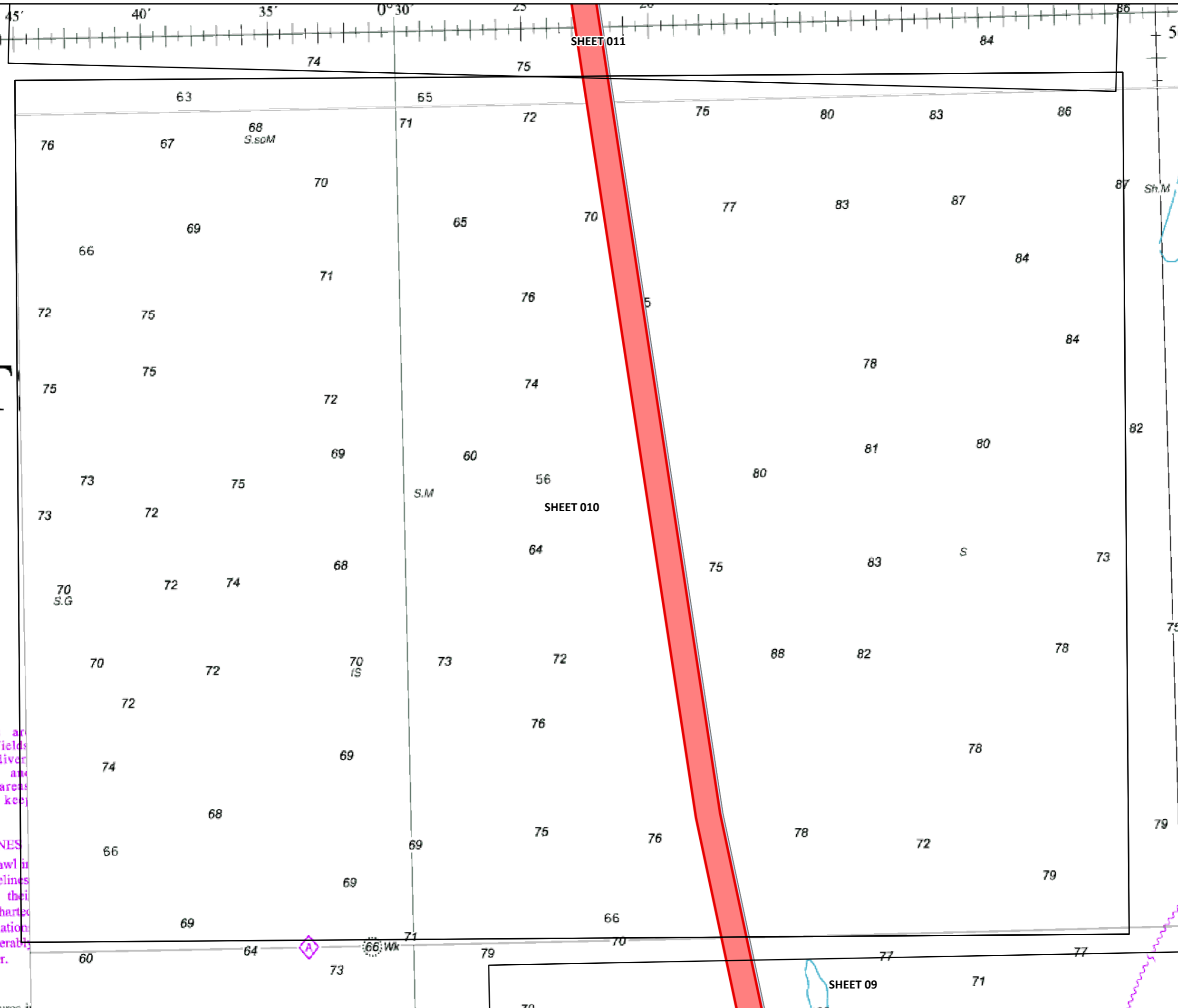
BACKGROUND MAPPING INFORMATION HAS BEEN REPRODUCED FROM THE ORDNANCE SURVEY BY PERMISSION OF ORDNANCE SURVEY OF THE CONTROLLER OF HIS MAJESTY'S STATIONERY OFFICE. © CROWN COPYRIGHT AND DATABASE RIGHTS 2024 ORDNANCE SURVEY AC0000808122.

1	April 2026	FIRST ISSUE	BK	AJ	CM
Issue	Date	Remarks	Drawn	Checked	Approved

**Title**

OFFSHORE GENERAL ARRANGEMENT PLAN SERIES FOR CONSULTATION

<b>nationalgrid</b>			
Figure Number	Sheet 9 of 11		
Drawing Reference	EGL5-NGET-MAR-XX-DG-YM-009		
Scale	Sheet Size	Sheet	Issue
1:147,000	A3	Sheet 9 of 11	01



**Legend**

- █ Draft Order Limits
- 12NM Limit
- - - Scotland Adjacent Waters Limit
- EEZ

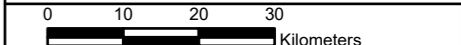
**Notes**

This drawing is scaled at paper size A3, therefore any prints taken at smaller sizes will affect accuracy of the measurement units and should not be scaled against.

Additional Copyright - Inset: Esri UK, Esri, HERE, Garmin, USGS, NGA, Sources: Esri, TomTom, Garmin, FAO, NOAA, USGS, © OpenStreetMap contributors, and the GIS User



Coordinate System: British National Grid  
 Sheet X Centroid Coordinate: 499955.35E Sheet Y Centroid Coordinate: 697340.27N



BACKGROUND MAPPING INFORMATION HAS BEEN REPRODUCED FROM THE ORDNANCE SURVEY BY PERMISSION OF ORDNANCE SURVEY OF THE CONTROLLER OF HIS MAJESTY'S STATIONERY OFFICE. © CROWN COPYRIGHT AND DATABASE RIGHTS 2024 ORDNANCE SURVEY AC0000808122.

1	April 2026	FIRST ISSUE	BK	AJ	CM
Issue	Date	Remarks	Drawn	Checked	Approved

**Title**

OFFSHORE GENERAL ARRANGEMENT PLAN SERIES FOR CONSULTATION

<b>nationalgrid</b>			
Figure Number	Sheet 10 of 11		
Drawing Reference	EGL5-NGET-MAR-XX-DG-YM-0010		
Scale	Sheet Size	Sheet	Issue
1:146,000	A3	Sheet 10 of 11	01

RT

EAS  
 Areas are gas fields and divers...  
 ducting and these areas...  
 used to keep

PIPELINES  
 for or trawl in...  
 and pipelines...  
 ed and their...  
 be the charte...  
 d undulation...  
 irrecoverably...  
 e danger.

ONING  
 d structures in



National Grid plc  
National Grid House,  
Warwick Technology Park,  
Gallows Hill, Warwick.  
CV34 6DA United Kingdom

Registered in England and Wales  
No. 4031152  
[nationalgrid.com](http://nationalgrid.com)