

# Stage 2 consultation feedback form

May 2026

**We are consulting on proposals for Eastern Green Link 5 (EGL 5), a primarily offshore high voltage electricity link between Scotland and England, with some onshore infrastructure.**

**Our proposals for EGL 5 are in England and English waters. Scottish and Southern Electricity Networks Transmission (SSEN Transmission) is responsible for obtaining the relevant consents in Scotland and Scottish waters.**

Following Stage 1 consultation in summer 2025, we have updated our proposals for our Stage 2 statutory consultation. This stage of consultation is an opportunity to share your views on our updated and more detailed proposals for EGL 5. This consultation is a 'statutory' consultation as it is being carried out in line with the Planning Act 2008. Statutory consultation is a requirement of the Development Consent Order (DCO).

We are aware of the UK Government's Planning and Infrastructure Act 2025 and the changes that will apply to the DCO and statutory consultation process. However, at the time of writing this document, requirements under the Planning Act 2008 remain in place until transitional arrangements are made.

### **Stage 2 consultation**

Stage 2 consultation is open from 12:00pm on Friday 29 May and will close at 11:59pm Friday 24 July 2026.

EGL 5 is a project of national significance. These types of projects require a special type of planning permission to be built. This is known as a Development Consent Order (DCO).

Consultation is an important part of the DCO process, and this is our second consultation on the EGL 5 proposals. Feedback from our consultations - along with the outcome of technical assessments and environmental surveys - helps us to develop our proposals before submitting an application to the Planning Inspectorate.

## Our proposals

Our proposals have been revised following feedback received at our previous Stage 1 consultation in Summer 2025, along with outputs from technical assessments and environmental surveys.

More information on Stage 1 consultation can be found in the Non-statutory Consultation Feedback Report, including how the feedback received helped shape our updated proposals.

This report is available on our project website at [nationalgrid.com/egl5](https://nationalgrid.com/egl5).

As part of Stage 2 consultation, we are asking for your feedback on all aspects of the project, including:

- 423 km of subsea high voltage direct current (HVDC) cables in English waters
- landfall siting at Anderby Creek on the Lincolnshire coastline
- a transition joint bay connecting the offshore and onshore HVDC underground cables at landfall in Anderby Creek
- up to 8 km of new underground HVDC cable, from the landfall point at Anderby Creek to the converter station
- a new converter station, east of Bilsby, East Lindsey
- up to 1 km of new underground high voltage alternating current (HVAC) cable. This will be between the converter station and the proposed substation, called the Lincolnshire Connection Substation B (LCS-B). This substation is included in the DCO for National Grid's Grimsby to Walpole Project. It therefore will not be included or consulted on as part of the EGL 5 proposals.

### We are also seeking feedback on additional temporary access to land during construction.

This includes options for two temporary haul roads and use of land for other construction activities.

### Preliminary Environmental Information Report (PEIR)

We are also consulting on the preliminary findings and proposed mitigation from our environmental studies and assessments. Full details of this can be found in our Preliminary Environmental Information Report (PEIR). This is available on our project website.

## Further information

To support our Stage 2 consultation, we have published:

- **Stage 2 Consultation Document:** detailed breakdown of the updated proposals being brought forward in this Stage 2 consultation
- **Design drawings:** illustrative drawings of infrastructure proposed
- **Soils and drainage leaflet:** explains how land drainage and soil quality will be protected and reinstated
- **Consultation newsletter:** a summary of the EGL 5 Project and public consultation details
- **Interactive projects map:** shows a higher level of detail of our full proposals. Also available on the EGL 5 website
- **Consultation banners:** a summary of EGL 5's onshore and offshore proposals
- **Onshore and marine plans:** detailed plans of where we propose to locate our onshore and offshore infrastructure
- **Statement of Community Consultation (SoCC):** our approach to consulting with the local community on our proposals. Has been developed in consultation with all relevant local authorities
- **Strategic Options Report update:** an updated overview of the appraisal and review of the approach we have used to date
- **Preliminary Environmental Information Report (PEIR):** considers the likely environmental effects of our proposals. Also sets out our proposed mitigation measures
- **Design development report:** explains how the development has progressed since the Stage 1 consultation
- **Non-technical summary of the PEIR:** an overview of the likely environmental effects of our proposals. Also sets out our proposed mitigation measures
- **Converter station design - background to potential architectural approaches:** provides a background to and summary of the potential architectural approaches for the new converter station.
- **Stage 1 Consultation feedback report:** summarises the feedback we received during the stage 1 consultation. Also sets out how it has been considered

All of these materials are available to download from our website at [nationalgrid.com/egl5](https://nationalgrid.com/egl5). Printed copies of most of our consultation documents are available free of charge on request. These can be requested by emailing [contactegl5@nationalgrid.com](mailto:contactegl5@nationalgrid.com). You can also call us on **0800 358 4817**. Some detailed technical documents may be subject to a printing charge.

Key consultation documents will be available to view at local information points (see page 40 of Stage 2 consultation document for details), and copies of all documents listed above will be available to view at our consultation events (details can be found on the project website, on page 41 of our Stage 2 consultation document and in the Consultation newsletter).

In this consultation, we are asking for your views on the English part of the project only. Scottish and Southern Electricity Networks (SSEN) is responsible for the Scottish section, and the proposed route it identified was subject to public consultation in autumn 2024 and in spring 2025. Further information about the SSEN proposals, including detailed maps and consultation materials, are available on its project website: [www.ssen-transmission.co.uk/eastern-green-link-5/](https://www.ssen-transmission.co.uk/eastern-green-link-5/)

## What has changed since our Stage 1 consultation?

Feedback received during our Stage 1 consultation in Summer 2025, along with outputs from technical assessments and environmental surveys has resulted in a number of changes to the project.

We encourage you to review our updated plans carefully, even if you have previously provided feedback, as we have made changes since Stage 1 consultation.

### In summary, the key changes are:

- changes to the subsea cable route in English waters, including confirmation of the preferred route. This route was chosen to limit possible interaction with nearby windfarm projects and Marine Conservation Zones
- confirmation of the north of Huttoft cable route. This route was preferred from an engineering perspective at Stage 1 consultation. Feedback received at Stage 1 also indicated a preference for this route
- discounting the east converter station siting zone. Confirmation of the west converter station siting zone. This route was preferred from an engineering perspective at Stage 1 consultation. Feedback received at Stage 1 also indicated a preference for this route
- within the west converter station siting zone, the new converter station will sit to the north-east of Bilsby. Feedback received at Stage 1 indicated a preference for this route
- refining the location of the converter station siting means we can confirm the length of HVAC cable within our Stage 2 proposals. This cable is needed to connect the converter station into the substation
- with preferred options now selected, we are bringing forward two proposed options for temporary haul roads. These will facilitate construction activities.

Information on the route and updated proposals can be found in the Stage 2 consultation document. It can also be found in the Preliminary Environmental Information Report (PEIR) and the Non-Technical Summary, all of which can be found on our website at [nationalgrid.com/egl5](https://nationalgrid.com/egl5)

## How to provide your feedback

**Please submit your response to this consultation by 11:59pm on Friday 24 July 2026.**

All responses to the consultation must be received before the consultation closes. Postal responses will be accepted until a week after the consultation closes if they are posted within the consultation period. Your feedback will play an important part in shaping our plans before we submit our application for planning consent.

It is not necessary to complete all of the questions if you do not wish to.

Our DCO application will include a consultation report. This will show how we have taken account of feedback received at all stages of consultation.

We encourage you to read our consultation materials and take the opportunity to ask any questions before providing your feedback.

### Identifying specific locations

Where possible, we encourage you to refer to specific locations that are most important to you. Project maps and the interactive map show the areas where the cable route and the converter station are proposed. This information will help you provide feedback. The maps can be viewed at the public information events and on our project website at [nationalgrid.com/egl5](https://nationalgrid.com/egl5)

A guide of the consultation documents and drawings has also been published to help you navigate to the maps and plans most relevant to you. You can find this on our website.

If you wish to receive paper copies of the consultation documents or need them in another format, please get in touch by freephone on **0800 358 4817**. You can also email [contactegl5@nationalgrid.com](mailto:contactegl5@nationalgrid.com) (*please note print charges may apply*).

**Where possible, please write any comments in block capitals.**

# Offshore proposals

Infrastructure within our offshore proposals include HVDC subsea cables.

The subsea cables for EGL 5 would be 555 km in length. They would extend from Aberdeenshire, Scotland, to landfall at Anderby Creek in Lincolnshire. 423 km of the cables would be in English waters.

**This consultation only seeks feedback on the English parts of the project.**

Please refer to page 16 of the Stage 2 consultation document and English Marine Options Appraisal Report for more information on our subsea cables. For more detailed maps, please visit our website.

### Legend

- EGL5 Offshore Draft Order Limit
- Highly protected marine areas
- Areas of outstanding natural beauty
- Special protection areas with marine components
- Marine conservation zones
- National nature reserves
- Ramsar
- Territorial sea limit (12nm)
- Sites of special scientific interest
- Special areas of conservation with marine components
- Scottish adjacent waters

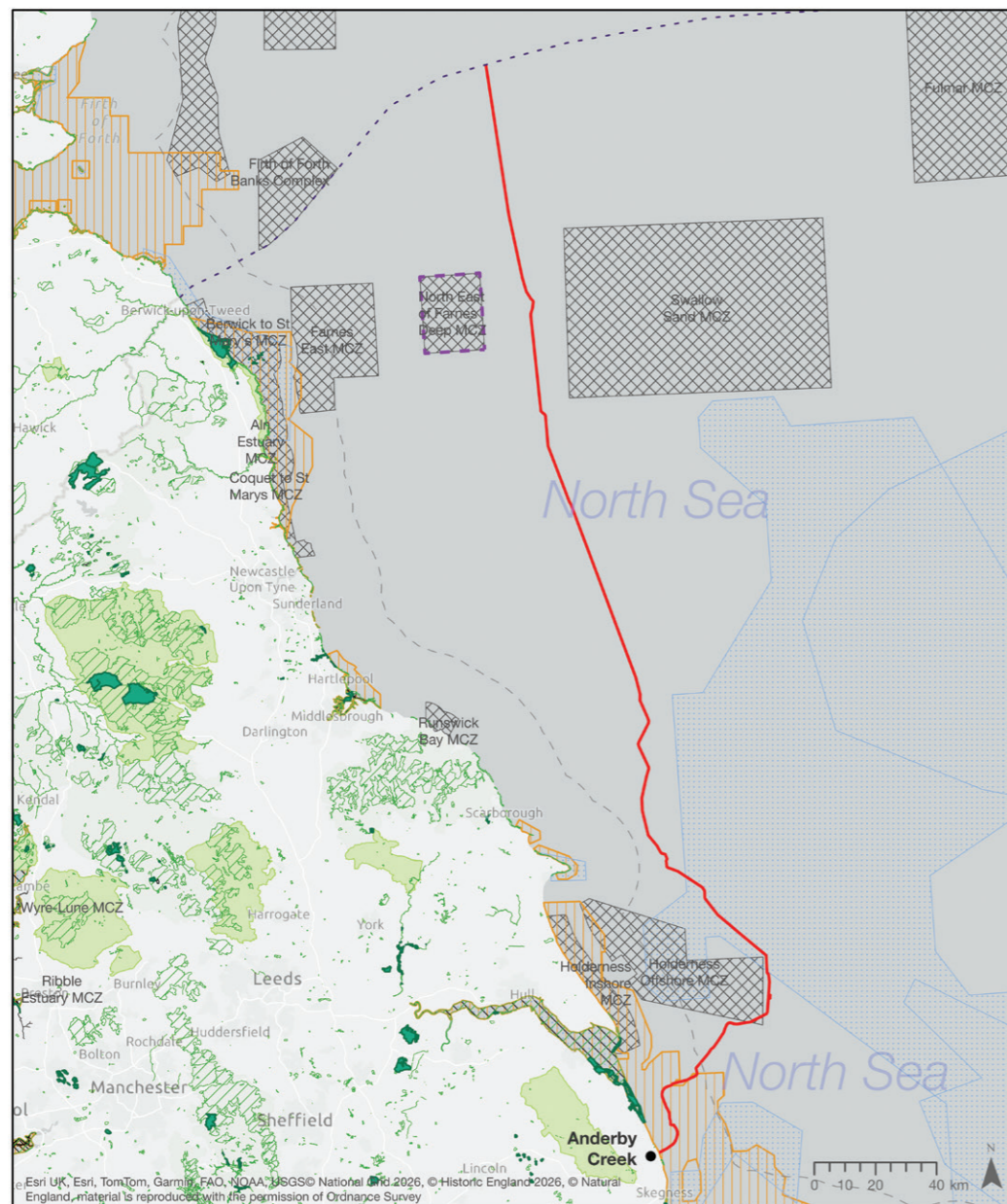


Figure 1 - Map of offshore route

**Q1. Do you have any comments on our proposed offshore cable corridor within English waters?**  
 If your feedback relates to a specific area, or any other concerns with our proposed offshore cable corridor, please reference this here.

# Anderby Creek Landfall

Proposed infrastructure includes:

- HVDC subsea and underground cables
- transition joint bay.

The proposed cable landfall is where the offshore and onshore elements of the project would meet. The landfall site extends from mean low water springs (the average height of the low water levels during spring tides). It will terminate at a transition joint bay, where the offshore and onshore cables would be connected (figure 2). The transition joint bay would be located approximately 1 km inshore from the mean low water springs.

We have identified an area for landfall. This is situated north of Anderby Creek. On the South is the National Trust Sandilands Nature Reserve (formerly the Sandilands Golf Course). This area is considered most suitable due to its mainly rural setting. It also has few statutory designated environmental sites, and narrower beach and dunes.

Please refer to page 22 of the Stage 2 consultation document and our English Marine Options Appraisal Report for more information on our cable landfall. For more detailed maps, including an interactive map, please visit our website.

### Legend

- Draft Order Limits
- Indicative cable alignment
- Construction compound
- Construction and working areas
- Indicative zone for underground cable assets

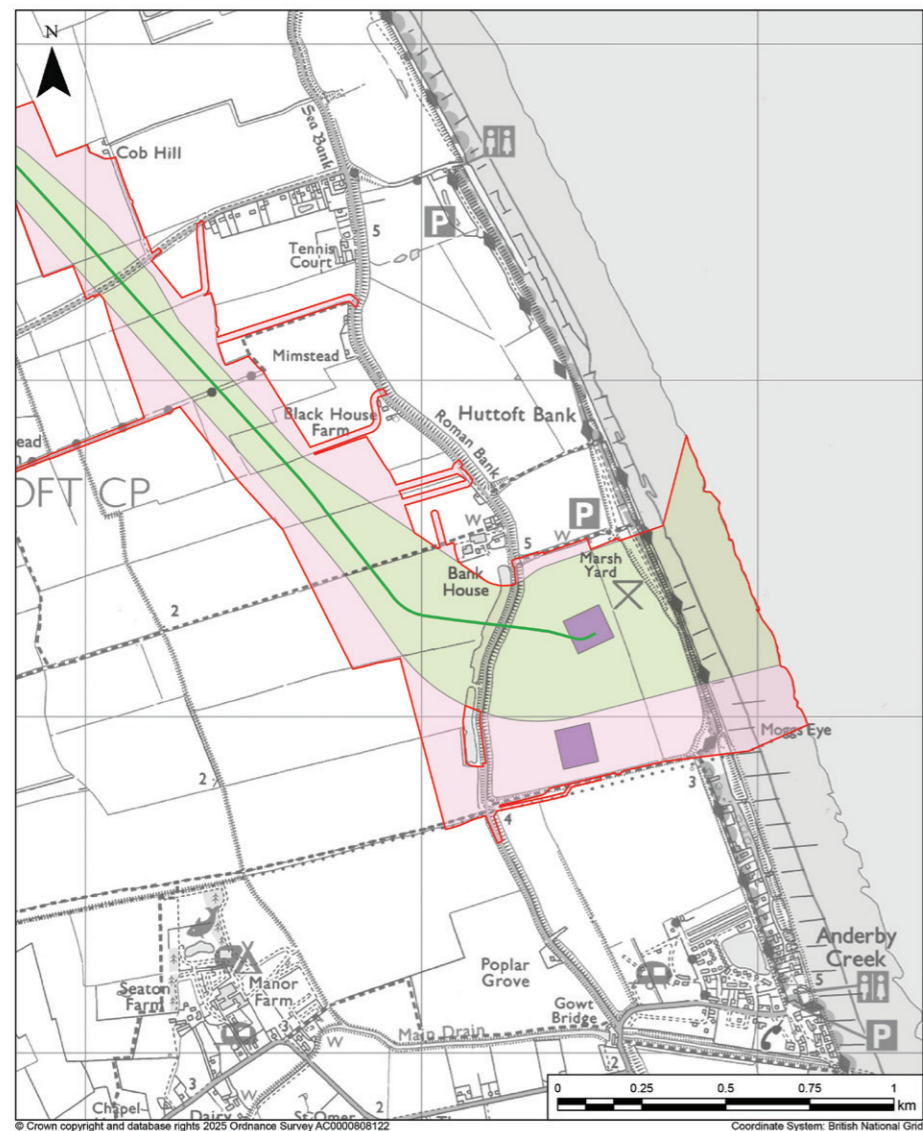


Figure 2 - Map of landfall

## Q2. Do you have any comments on the proposed cable landfall and transition joint bay at Anderby Creek?

If your feedback relates to a specific location, or any features we should look to avoid, please reference this here.

# Underground cable route

Proposed infrastructure includes both HVDC and HVAC underground cables.

Our underground cable route runs north of Huttoft from Anderby Creek landfall to the EGL 5 converter station. It then runs to the **new LCS-B substation (part of the Grimsby to Walpole Project)**.

From the Anderby Creek landfall, the underground cables would route west. It would cross Roman Bank and Sea Lane, and then the A52 (Sutton Road) north of Huttoft.

The route would then continue south-west past Asserby (towards the locations of both siting zones). It would then connect into the A1111 (Sutton Road), north-west of Thurlby. This route is shown in Figure 3, and on our interactive map on our website.

Please refer to page 24 of the Stage 2 consultation document and our Corridor Preliminary Routeing and Siting Study (CPRSS) for more information on our underground cable route. For more detailed maps, including an interactive map, please see our website.

### Legend

- Draft Order Limits
- Indicative cable alignment
- Indicative zone for converter station
- Construction compound
- LCS-B substation
- Indicative zone for underground cable assets
- Construction and working areas

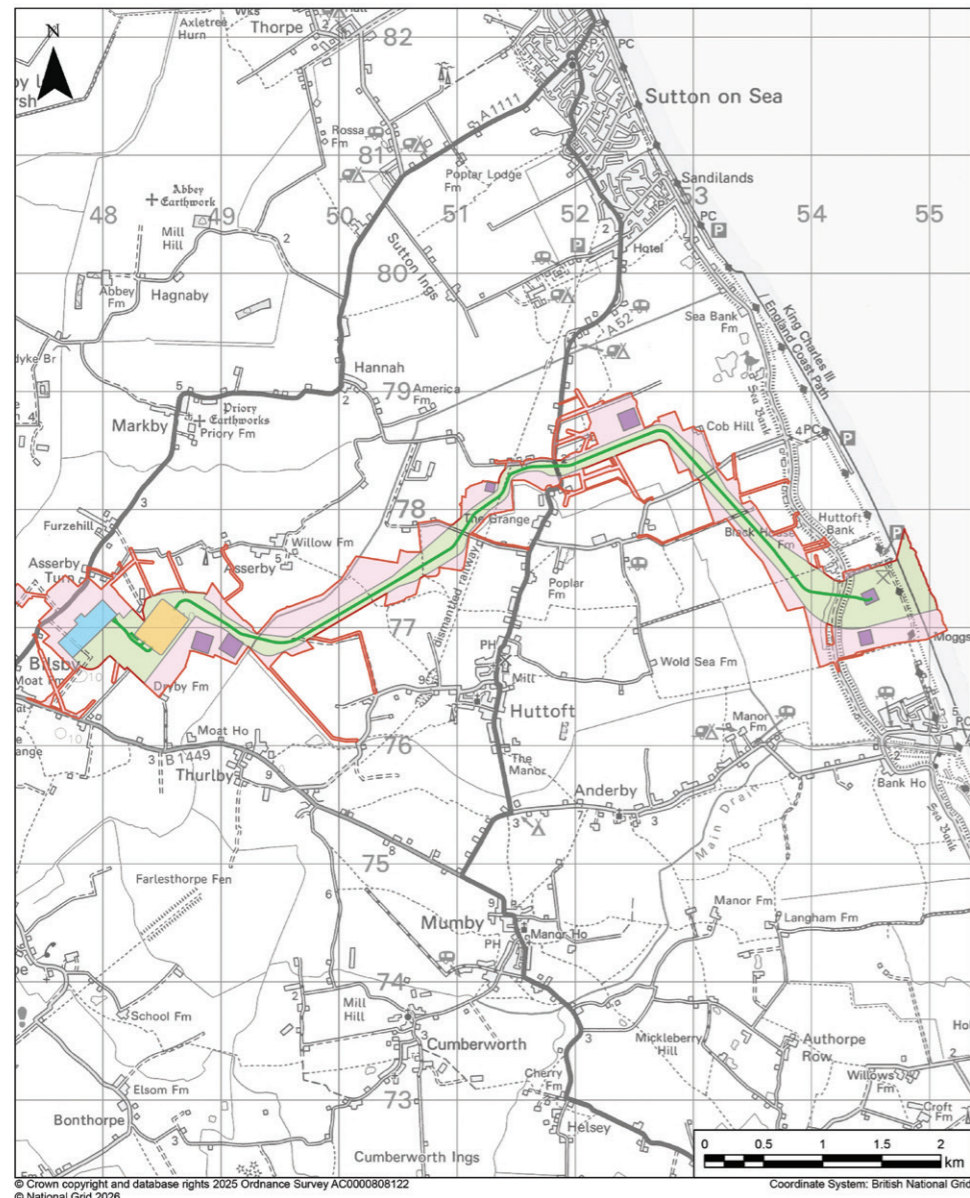


Figure 3 - EGL 5 proposed underground cable route

### Q3. Do you have any comments on our onshore underground cable route?

If your feedback relates to a specific location, or any features we should look to avoid, please reference this here.

# Converter station siting zone

During Stage 1 consultation, we introduced two potential siting zone options for the EGL 5 converter station. These were the west and east converter station siting zones. The east converter station siting zone was proposed to be located to the northwest of Huttoft.

After considering local feedback from Stage 1 consultation as well as the outputs from our environmental and technical assessments, we are now

proposing the west converter station siting zone. This is situated north-east of Bilsby.

Please refer to page 26 of the Stage 2 consultation document and our CPRSS for more information on our converter station siting zone. For more detailed maps, including an interactive map, please see our website.

### Legend

- Draft Order Limits
  - Indicative cable alignment
  - Indicative zone for converter station
  - Construction compound
  - LCS-B substation
  - Indicative zone for underground cable assets
  - Construction and working areas
- This substation is included in the DCO for Grimsby to Walsby and will not be consulted on as part of the EGL 5 proposals

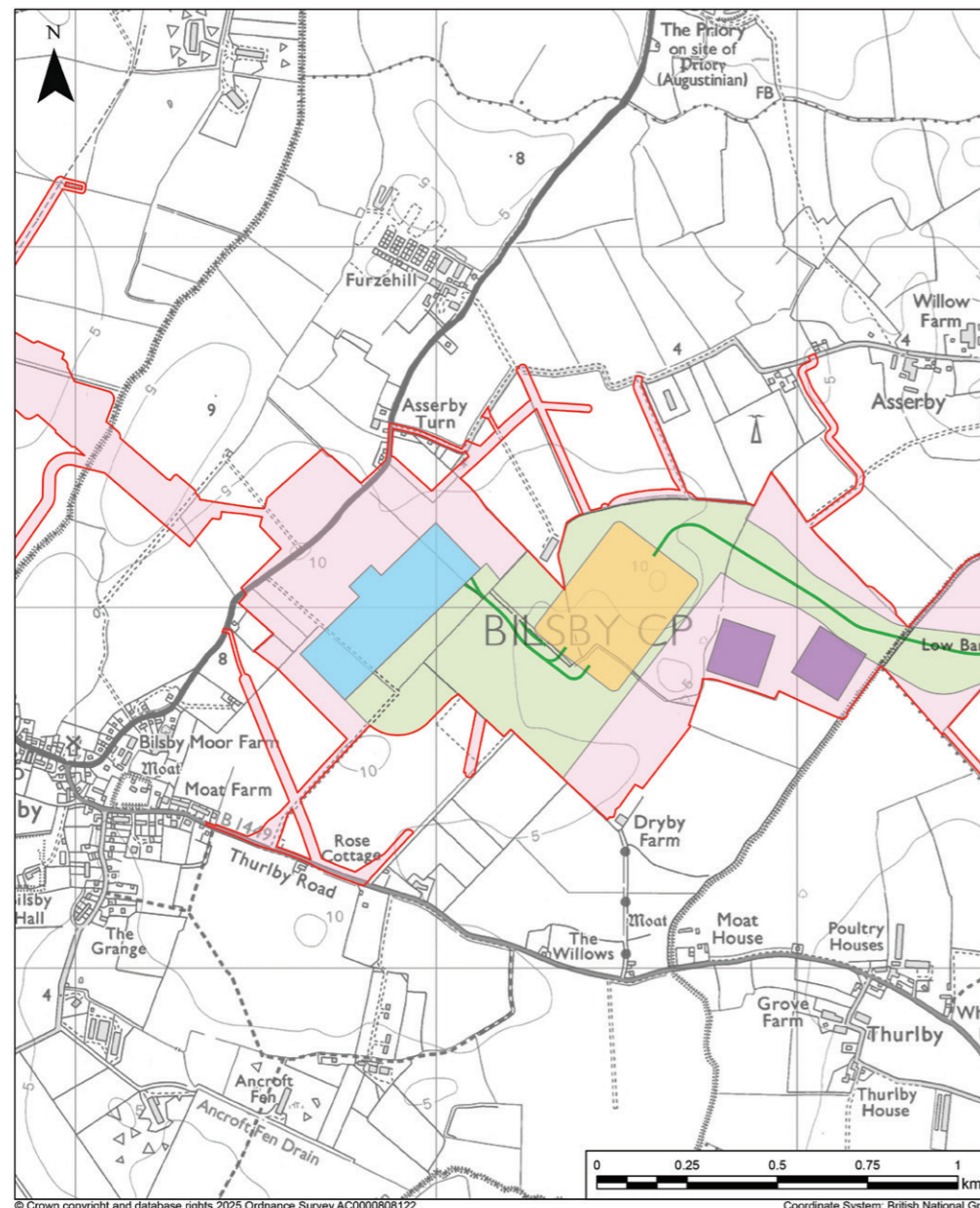


Figure 4 - Map of EGL 5 proposed converter station siting zone

## Q4. Do you have any comments on the proposed EGL 5 converter station siting zone north-east of Bilsby?

If your feedback relates to a specific location, or any features we should look to avoid, please reference this here.

# Converter station design

We will be finalising potential design approaches for our converter station at a later stage of the design process. Possible approaches are outlined below.

Permanent access would be needed for the new converter station. This is in addition to land needed for peripheral landscaping, drainage, and other related works.

Please refer to page 28 of the Stage 2 consultation document for more information on converter station designs.

Image of the proposed EGL 5 converter station



Figure 5 - Showing possible converter station designs

## Potential design approaches to the proposed converter station



Option A



Option B



Option C



Option D

## Q5. Do you have any comments on the proposed EGL 5 converter station design?

If your feedback relates to a specific feature or design we should look to incorporate, please reference this here.

## Land for construction

To construct EGL 5, we would need a range of temporary and permanent facilities and access to some land.

Our proposals include works associated with preparing the land for construction activity. These works include:

- diversions of third-party assets such as utilities and services
- construction of bellmouths - bell-shaped entrances to a track or road from a public highway that allows for the safe entrance and exit of construction vehicles
- installation of haul roads - temporary carriageways for transporting materials, machinery and people during construction
- installation of welfare and storage facilities, such as site offices and equipment stores.

### Temporary haul road

A temporary haul road is a type of road that is built specifically for use during construction. It facilitates the movement of materials, machinery, and people in and out of the site. These roads are designed to handle heavy construction traffic.

Following feedback received during Stage 1 consultation, we are seeking feedback on **two potential routes for temporary haul roads**. The haul roads would reduce the amount of construction traffic travelling through Alford and Bilsby.

In addition to gathering feedback, further technical analysis is ongoing to understand the feasibility of each temporary haul road, including opportunities for where we can co-ordinate with other projects in the area.

### Haul road options

Both temporary haul roads lead from the converter station north of Bilsby, cross over the A1111 and then take different routes.

**Option A** goes North from Asseby Turn and continues north of Thoresthorpe, towards College Farm. The haul road joins the A1104 between Snape Hill and Saleby Manor. Option A would be 2.7 km.

**Option B** runs from the A1111 into the fields at Asseby Turn and then runs south, parallel to Alford Road, through East Street near The Alford Windmill Trust and Alford Town Football Club. It continues north of Alford, parallel to West Street and joins the A1104 by Station Road, near the Alford Crematorium. Near the Crematorium there is a temporary construction compound proposed to help facilitate the construction activities. Option B would be 5.5 km.

We are seeking feedback on both options for the haul roads. Depending on feedback received and outcomes from surveys and technical assessments, both haul roads may be needed for construction.

Please refer to page 31 of the Stage 2 consultation document for more information on proposed haul roads. For more detailed maps, including an interactive map, please see our website.

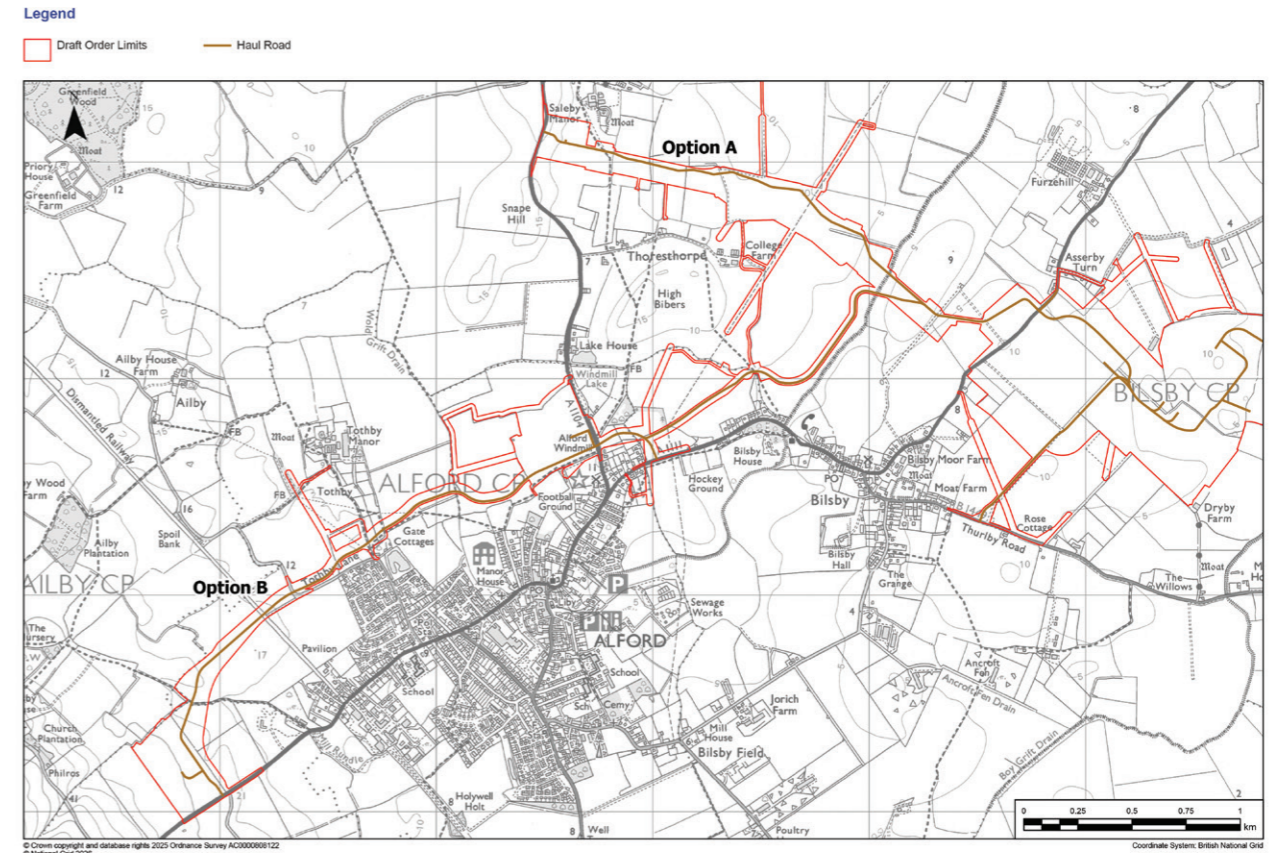


Figure 6 - Map of haul roads

### Q6. Do you have any comments on the proposed land needed for temporary haul roads or construction?

If your feedback relates to a specific location or feature we should look to avoid, please reference this here.

**Q7. Is there anything else you would like us to consider as we develop our proposals?  
Please provide details below.**

## About you

We would be grateful if you could answer the following optional, demographic questions.

We will use the information we receive to help understand whether our consultation has been useful to people of different backgrounds and requirements, and only in accordance with our Data Privacy Statement, as set out later in this form.

We may publish a summary of the results, but no information about an individual would be revealed.

The answers you provide to some of these questions are defined as 'special category data'. If you agree to provide this information, you can withdraw your permission for us to use it in our reports at any time.

To withdraw your permission, please contact us via email at [contactegl5@nationalgrid.com](mailto:contactegl5@nationalgrid.com)

**Q8. How would you describe your interest in EGL 5?**

- Local resident
- Local representative (ie. Councillor, MP)
- Potentially affected landowner or tenant/occupier (please include your landowner reference number below if known)
- Local business owner
- Regular visitor to the area
- Local interest group member (please specify below)
- Statutory organisation (please specify below)
- Other

Please provide further details here if required:

**Q9. What is your gender?**

- Male
- Female
- Non-binary
- Prefer not to say

**Q10. Do you consider yourself to be a person with a disability?**

- Yes
- No
- Prefer not to say

**Q11. How would you describe your ethnic background?**

- White English/Welsh/Scottish/Northern Irish/British
- Irish
- Gypsy or Irish Traveller
- Any other White background (please state below)
- White and Black Caribbean
- White and Black African
- White and Asian
- Any other Mixed or Multiple ethnic background (please state below)
- Asian/Asian British
- Indian
- Pakistani
- Bangladeshi
- Chinese
- Any other Asian background (please state below)
- Black African
- Black Caribbean
- Black British
- Any other Black/African/Caribbean background (please state below)
- Arab
- Any other ethnic group (please state below)
- Prefer not to say

If other, please state here:

**Q12. What is your age?**

- Under 16
- 16-24
- 25-34
- 35-44
- 45-54
- 55-64
- 65+
- Prefer not to say



## Data privacy statement

**We will use your personal data collected via this consultation for a number of purposes, including:**

- To analyse your feedback to the consultation
- To produce a Consultation Feedback Report. This will be based on our analysis of responses (individuals will not be identified in the report)
- To write to you with updates about the results of the consultation and other developments (if you do not wish to be contacted, you can submit the form anonymously)
- To keep up-to-date records of our communications with individuals and organisations.

**Any personal information you include in this form will be handled and used by (or made available to) the following recipients. This will be to record, analyse and report on the feedback we receive:**

- National Grid plc
- Scottish and Southern Electricity Networks Transmission (SSEN Transmission)
- The Planning Inspectorate (who will consider our application for consent to build the project. Any details published as part of this process will be anonymised)
- The Secretary of State (who will make the decision on our application)
- Our legal advisers
- Consultants working on behalf of National Grid.

Where you provide feedback as part of this consultation that is relevant to other National Grid projects, it will be shared with other relevant projects so that it can be considered appropriately.

# Next steps

**This consultation closes at 11:59pm on Friday 24 July 2026.**

All responses to the consultation must be received before the consultation closes. Postal responses will be accepted until a week after the consultation closes if they have been sent within the consultation period.

We will take all the feedback we receive during the consultation period into consideration as we continue to develop our plans for EGL 5. A Consultation Report showing how we have taken account of feedback will form part of the DCO application that will be submitted to the Planning Inspectorate.

The Planning Inspectorate will review and examine our application. Local residents, landowners and other stakeholders will be able to register an interest, submit comments and take part in the examination period. Following examination, the Planning Inspectorate will make a recommendation to the Secretary of State for Energy Security and Net Zero, who will decide whether to grant consent for the parts of the EGL 5 Project located in England.

## Information for landowners

If you are a landowner and believe your property may be affected by our proposals, and want to talk to our lands team, please email [egl5@ardent-management.com](mailto:egl5@ardent-management.com) or call **0203 105 0989** or write to: **EGL 5, Ardent, 31 Temple Street, Birmingham, B2 5DB**

## Contact us

Please get in touch if you have any questions or comments about our proposals for EGL 5.



Email us:  
**[contactegl5@nationalgrid.com](mailto:contactegl5@nationalgrid.com)**



Post your written responses (no stamp required) in an envelope addressed to:  
**Freepost EGL 5**



Call us on our freephone line, with an answerphone facility taking messages outside of these hours:  
**0800 358 4817** (Mon-Fri, 9am-5pm)

## How to provide feedback via this feedback form



Complete the feedback form online at:  
**[nationalgrid.com/egl5](https://nationalgrid.com/egl5)**



Email us your completed feedback form at:  
**[contactegl5@nationalgrid.com](mailto:contactegl5@nationalgrid.com)**



Return this form to Freepost EGL 5 (no stamp or further address details are required)



You can also share your feedback by emailing or sending a letter via the email and postal addresses provided above.

## Stay informed



**Whatsapp:**  
Join our WhatsApp channel to stay updated on key project updates throughout the consultation.



**GridEngage:**  
Download National Grid's GridEngage app to keep informed about the consultation.

## Your details

Title \_\_\_\_\_ First name \_\_\_\_\_

Surname \_\_\_\_\_

Organisation/Group (if applicable) \_\_\_\_\_

Address \_\_\_\_\_

\_\_\_\_\_

\_\_\_\_\_ Postcode \_\_\_\_\_

Email address \_\_\_\_\_

Please tick here if you would like to be updated on our proposals via email.

---

### Almost done...

If your feedback relates to a specific location or feature we should look to avoid, please make sure you have referenced this in the relevant section of the feedback form.

Thank you for taking the time to complete our survey. Please know that by submitting this feedback form you give us permission to analyse and include your response in our consultation report and DCO application.

