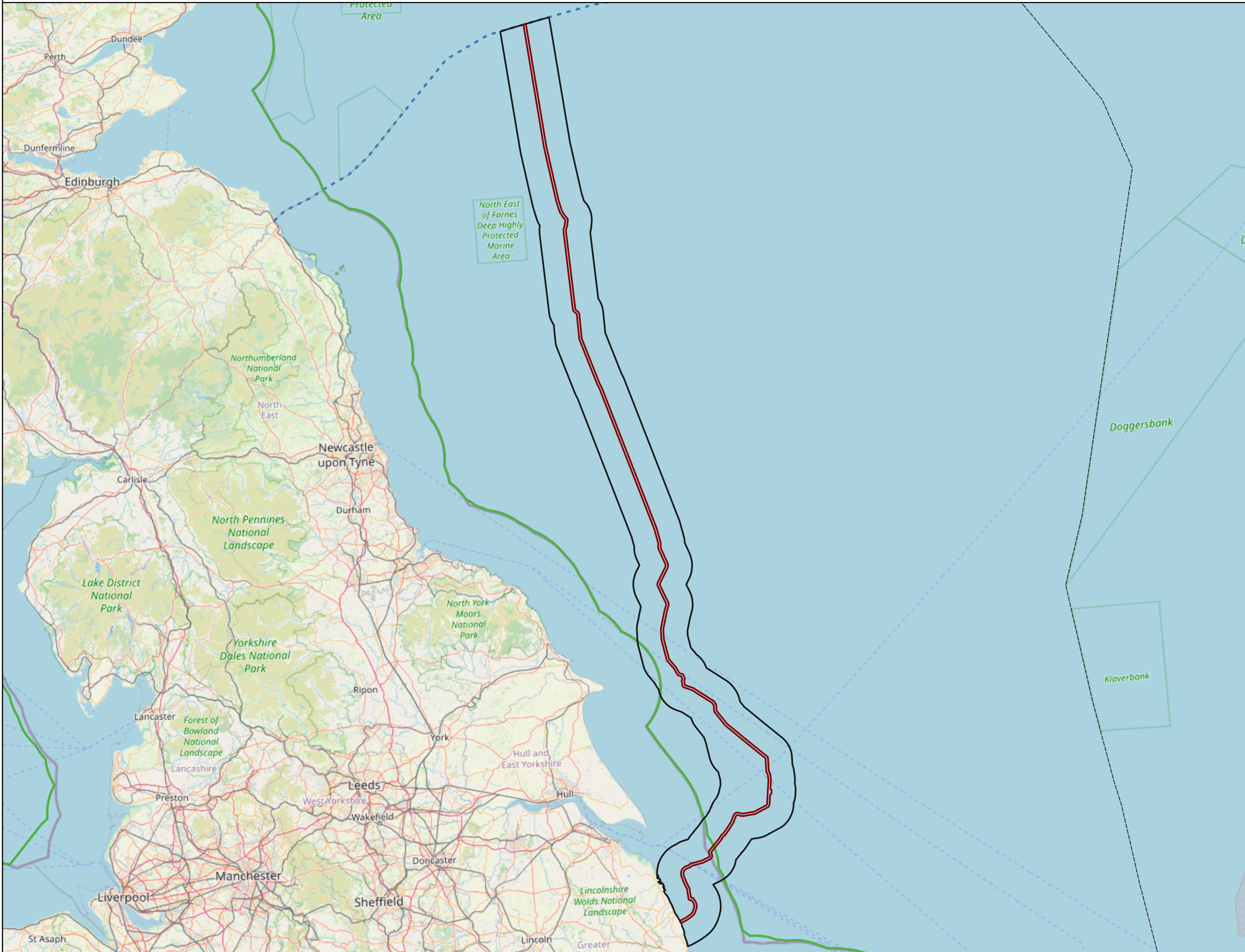




Figure 24-1
Chapter 24: Other Marine Users
Red Line Boundary and Other Marine Users Study Area



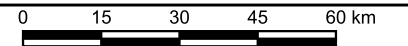
Legend

- English Offshore Scheme draft Order Limits
- Study Area (9.5 km Buffer)
- Scottish Marine Border
- 12 NM Limit
- EEZ

Notes
This drawing is scaled at paper size A3, therefore any prints taken at smaller sizes will affect accuracy of the measurement units and should not be scaled against.



Coordinate System: WGS 84 / UTM zone 30N
Sheet X Centroid Coordinate: 709576E, Sheet Y Centroid Coordinate: 6083327N



Base map and data from OpenStreetMap and OpenStreetMap Foundation (CC-BY-SA). © <https://www.openstreetmap.org> and contributors. UKHO Contains public sector information licensed under the Open Government Licence v3.0. © Marine Management Organisation copyright and/or database right 2024. All rights reserved.

1	25/02/2026	DRAFT	MW	AN	CB
Issue	Date	Remarks	Drawn	Checked	Approved

Title
Figure 24-1
Chapter 24: Other Marine Users
Red Line Boundary and Other Marine Users Study Area
EGL 5 EIA Preliminary Environmental Information Report
Volume 3: Figures

nationalgrid

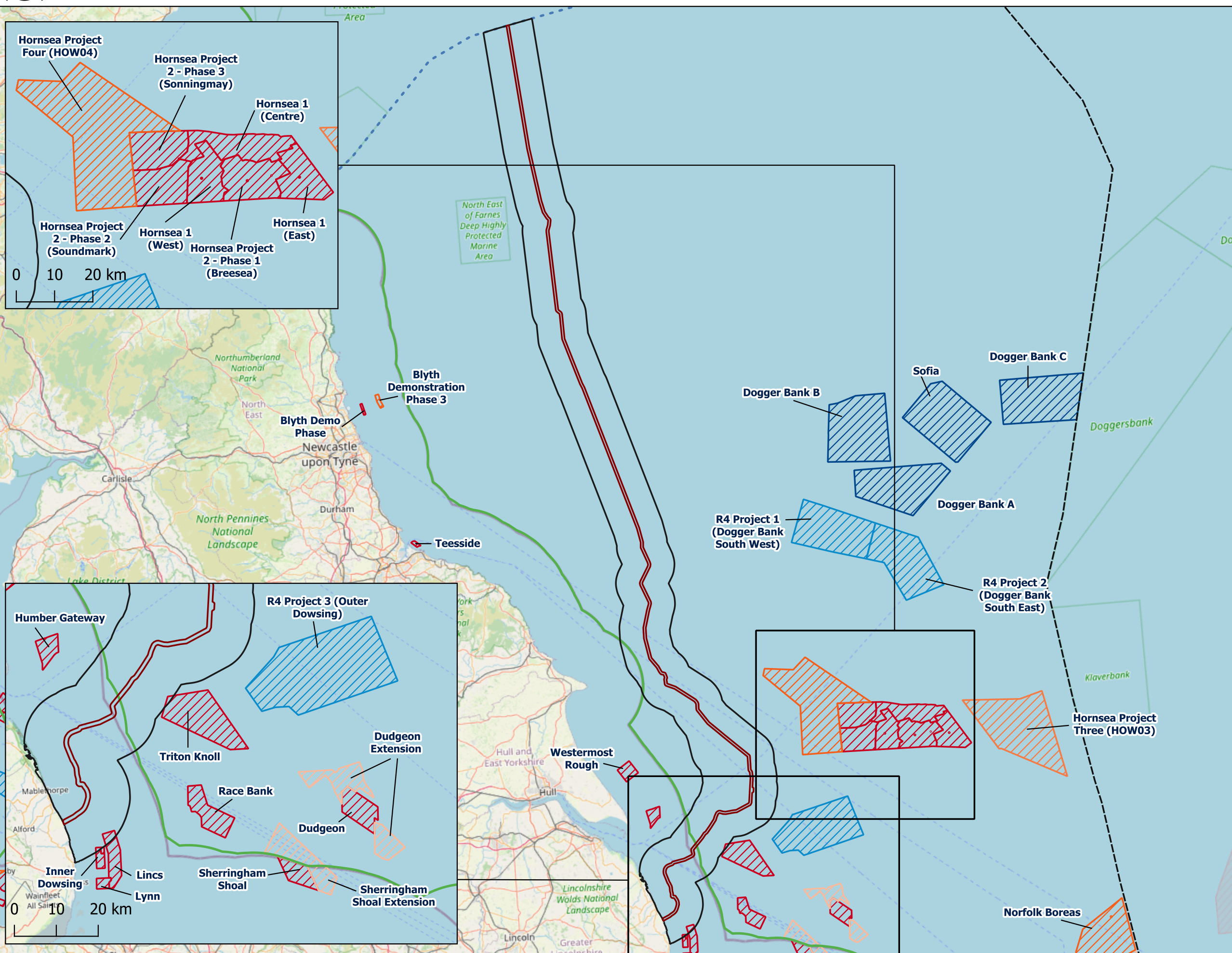
Figure Number Figure 24-1

Drawing Reference C01585-EGL5-PEIR-LOC-001-C

Scale	Sheet Size	Sheet	Issue
1:1,450,000	A3	SHEET 1 OF 1	1



Figure 24-2
Chapter 24: Other Marine Users
Offshore Wind Infrastructure



Legend

- English Offshore Scheme draft Order Limits
- Study Area (9.5 km Buffer)

Offshore Wind Sites

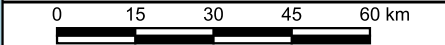
- Active/In Operation
- Consented
- Government Support on Offer
- In Planning
- Inactive/Decommissioned
- Pre-planning Application
- Under Construction

- Scottish Marine Border
- 12 NM Limit
- EEZ

Notes
This drawing is scaled at paper size A3, therefore any prints taken at smaller sizes will affect accuracy of the measurement units and should not be scaled against.



Coordinate System: WGS 84 / UTM zone 30N
Sheet X Centroid Coordinate: 703368E, Sheet Y Centroid Coordinate: 6082334N



Base map and data from OpenStreetMap and OpenStreetMap Foundation (CC-BY-SA). © <https://www.openstreetmap.org> and contributors. UKHO Contains public sector information licensed under the Open Government Licence v3.0. © Marine Management Organisation copyright and/or database right 2024. All rights reserved.

1	25/02/2026	DRAFT	MW	AN	CB
Issue	Date	Remarks	Drawn	Checked	Approved

Title
Figure 24-2
Chapter 24: Other Marine Users
EGL 5 EIA Preliminary Environmental
Information Report
Volume 3: Figures

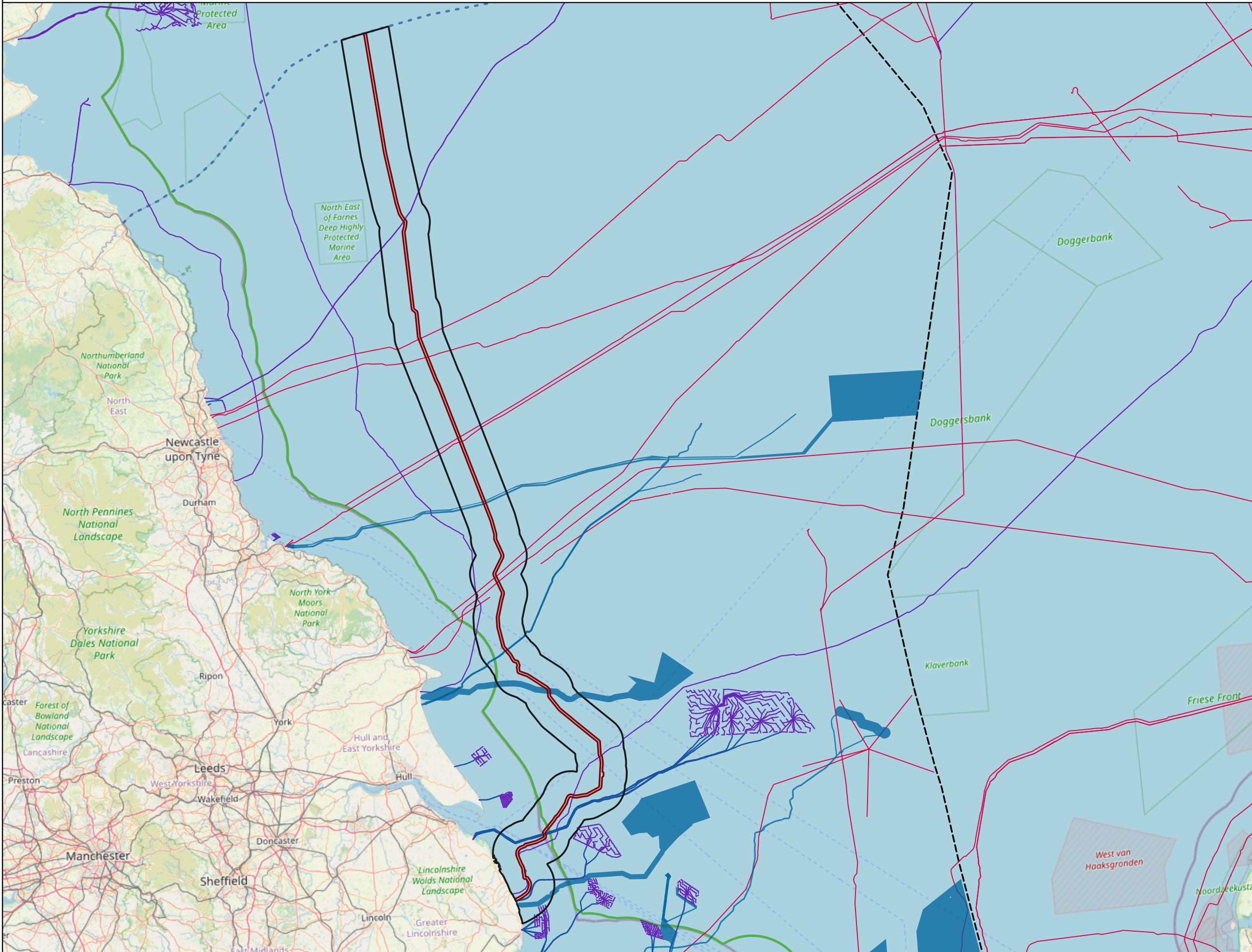
nationalgrid			
Figure Number	Figure 24-2		
Drawing Reference	C01585-EGL5-PEIR-INFR-001-C		
Scale	Sheet Size	Sheet	Issue
1:1,450,000	A3	SHEET 1 OF 1	1



Figure 24-3
Chapter 24: Other Marine Users
Interconnector and Telecommunication Cables Within the Study Area

Legend

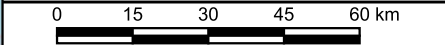
- English Offshore Scheme draft Order Limits
- Study Area (9.5 km Buffer)
- Power Cable
- Telecommunication Cable
- Wind Farm Export Cable
- Scottish Marine Border
- 12 NM Limit
- EEZ



Notes
This drawing is scaled at paper size A3, therefore any prints taken at smaller sizes will affect accuracy of the measurement units and should not be scaled against.



Coordinate System: WGS 84 / UTM zone 30N
Sheet X Centroid Coordinate: 767364E, Sheet Y Centroid Coordinate: 6080787N



Base map and data from OpenStreetMap and OpenStreetMap Foundation (CC-BY-SA). © <https://www.openstreetmap.org> and contributors. UKHO Contains public sector information licensed under the Open Government Licence v3.0. © Marine Management Organisation copyright and/or database right 2024. All rights reserved.

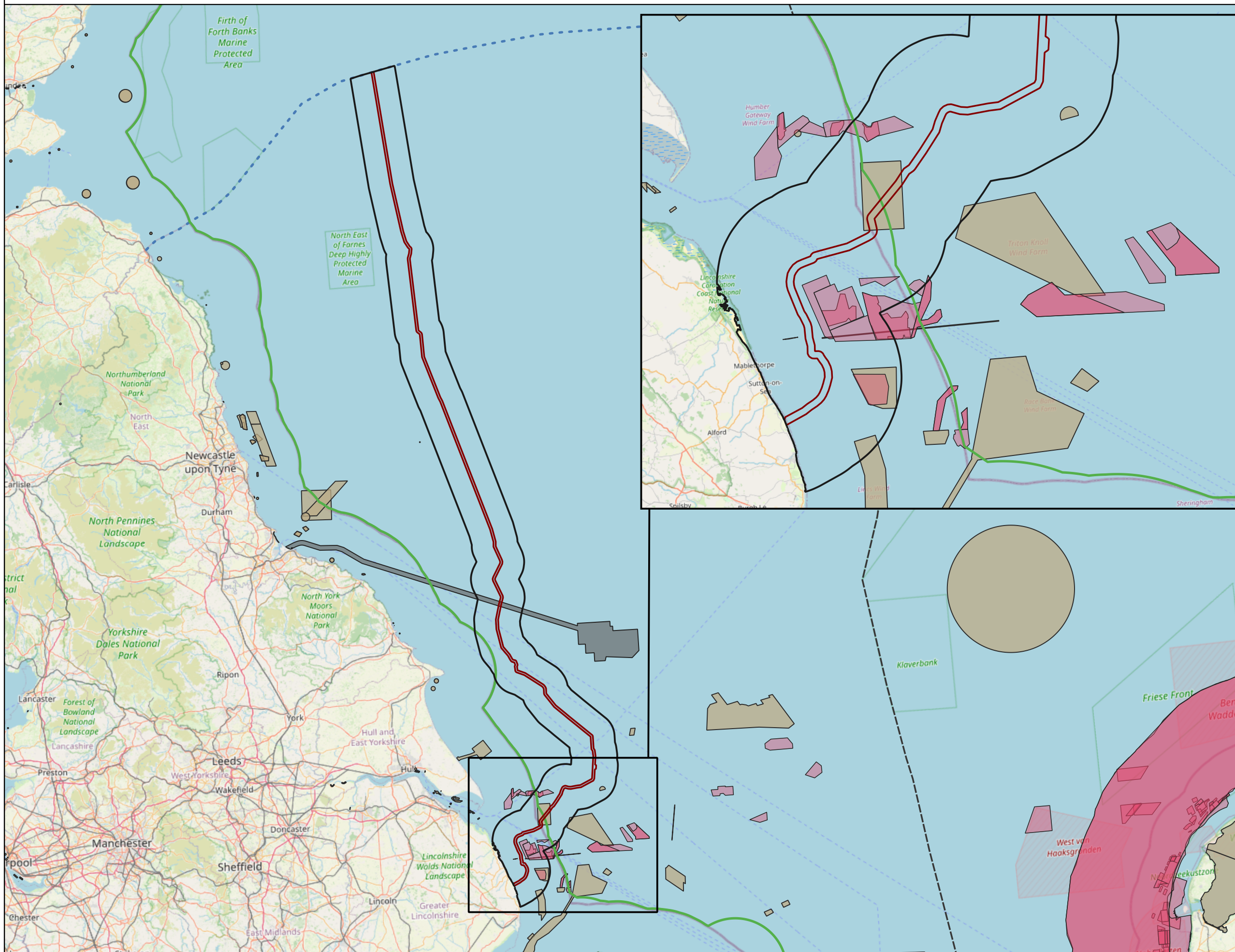
1	25/02/2026	DRAFT	MW	AN	CB
Issue	Date	Remarks	Drawn	Checked	Approved

Title
Figure 24-3
Chapter 24: Other Marine Users
Interconnector and Telecommunication Cables
Within the Study Area
EGL 5 EIA Preliminary Environmental
Information Report
Volume 3: Figures

nationalgrid			
Figure Number	Figure 24-3		
Drawing Reference	C01585-EGL5-PEIR-INFR-002-C		
Scale	Sheet Size	Sheet	Issue
1:1,500,000	A3	SHEET 1 OF 1	1



Figure 24-4
Chapter 24: Other Marine Users
Other Marine Users Infrastructure

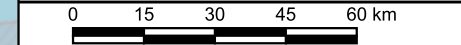


- Legend**
- English Offshore Scheme draft Order Limits
 - Study Area (9.5 km Buffer)
 - Disposal Site
 - Aggregate Site
 - Carbon Capture and Storage (CCS) Site
 - Scottish Marine Border
 - 12 NM Limit
 - EEZ

Notes
This drawing is scaled at paper size A3, therefore any prints taken at smaller sizes will affect accuracy of the measurement units and should not be scaled against.



Coordinate System: WGS 84 / UTM zone 30N
Sheet X Centroid Coordinate: 772099E, Sheet Y Centroid Coordinate: 6084821N



Base map and data from OpenStreetMap and OpenStreetMap Foundation (CC-BY-SA). © <https://www.openstreetmap.org> and contributors. UKHO Contains public sector information licensed under the Open Government Licence v3.0. © Marine Management Organisation copyright and/or database right 2024. All rights reserved.

1	25/02/2026	DRAFT	MW	AN	CB
Issue	Date	Remarks	Drawn	Checked	Approved

Title

Figure 24-4
Chapter 24: Other Marine Users
Other Marine Users Infrastructure
EGL 5 EIA Preliminary Environmental
Information Report
Volume 3: Figures

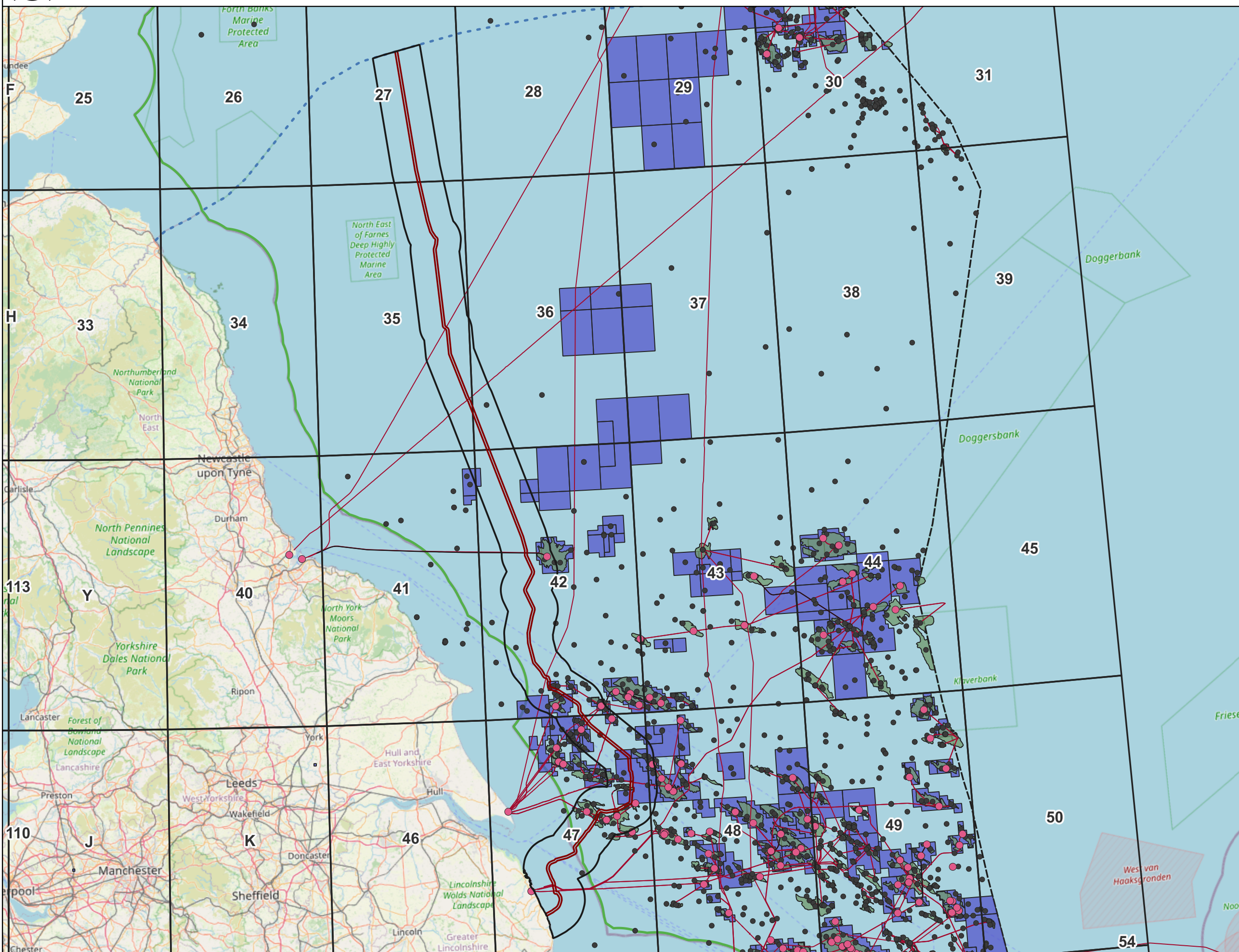
nationalgrid	
Figure Number	Figure 24-4
Drawing Reference	C01585-EGL5-PEIR-INFR-006-C
Scale	1:1,600,000
Sheet Size	A3
Sheet	SHEET 1 OF 1
Issue	1



Figure 24-5
Chapter 24: Other Marine Users
Oil and Gas Infrastructure Within the Study Area

Legend

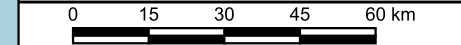
- English Offshore Scheme draft Order Limits
- Study Area (9.5 km Buffer)
- NSTA Quadrant
- Offshore Field
- Licensed Block
- Offshore Well
- Surface Infrastructure
- Subsea Infrastructure
- Pipeline
- Scottish Marine Border
- 12 NM Limit
- EEZ



Notes
This drawing is scaled at paper size A3, therefore any prints taken at smaller sizes will affect accuracy of the measurement units and should not be scaled against.



Coordinate System: WGS 84 / UTM zone 30N
Sheet X Centroid Coordinate: 753848E, Sheet Y Centroid Coordinate: 6086756N



Base map and data from OpenStreetMap and OpenStreetMap Foundation (CC-BY-SA). © <https://www.openstreetmap.org> and contributors. UKHO Contains public sector information licensed under the Open Government Licence v3.0. © Marine Management Organisation copyright and/or database right 2024. All rights reserved.

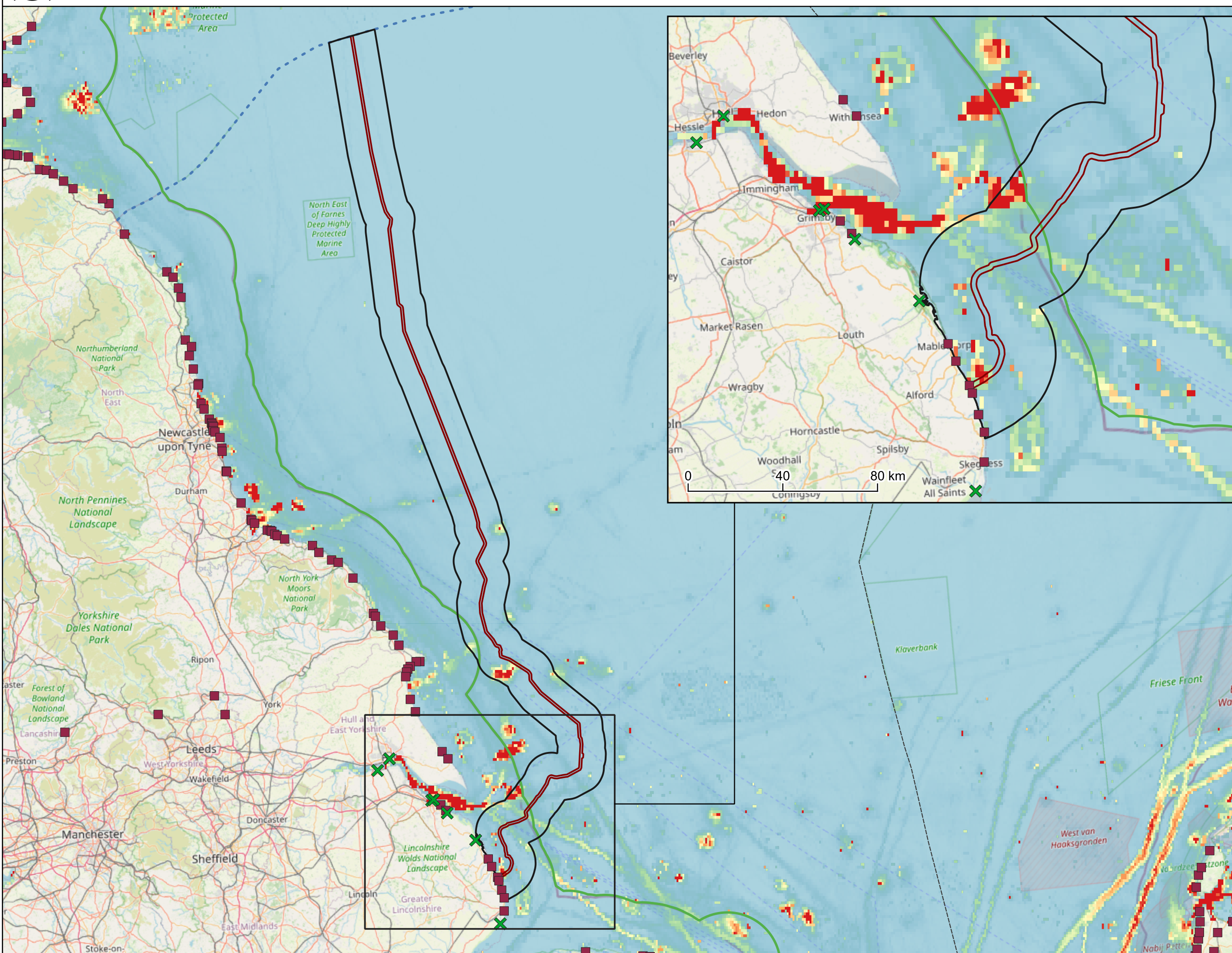
1	25/02/2026	DRAFT	MW	AN	CB
Issue	Date	Remarks	Drawn	Checked	Approved

Title
Figure 24-5
Chapter 24: Other Marine Users
Oil and Gas Infrastructure Within the Study Area
EGL 5 EIA Preliminary Environmental Information Report
Volume 3: Figures

nationalgrid			
Figure Number		Figure 24-5	
Drawing Reference			
C01585-EGL5-PEIR-INFR-003-C			
Scale	Sheet Size	Sheet	Issue
1:1,500,000	A3	SHEET 1 OF 1	1



Figure 24-6
Chapter 24: Other Marine Users
Bathing Waters, Sailing and Diving Clubs in the Study Area



Legend

- English Offshore Scheme draft Order Limits
- Study Area (9.5 km Buffer)
- Bathing Water Site
- ✕ Sailing and Diving Club

Vessel Density (2023)
(hours/km²/month)

30

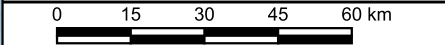
0

- Scottish Marine Border
- 12 NM Limit
- EEZ

Notes
This drawing is scaled at paper size A3, therefore any prints taken at smaller sizes will affect accuracy of the measurement units and should not be scaled against.



Coordinate System: WGS 84 / UTM zone 30N
Sheet X Centroid Coordinate: 775265E, Sheet Y Centroid Coordinate: 6075514N



Base map and data from OpenStreetMap and OpenStreetMap Foundation (CC-BY-SA). © <https://www.openstreetmap.org> and contributors. UKHO Contains public sector information licensed under the Open Government Licence v3.0. © Marine Management Organisation copyright and/or database right 2024. All rights reserved.

1	25/02/2026	DRAFT	MW	AN	CB
Issue	Date	Remarks	Drawn	Checked	Approved

Title

Figure 24-6
Chapter 24: Other Marine Users
Bathing Waters, Sailing and Diving Clubs
in the Study Area
EGL 5 EIA Preliminary Environmental
Information Report
Volume 3: Figures

nationalgrid			
Figure Number		Figure 24-6	
Drawing Reference			
C01585-EGL5-PEIR-INFR-004-C			
Scale	Sheet Size	Sheet	Issue
1:1,540,000	A3	SHEET 1 OF 1	1