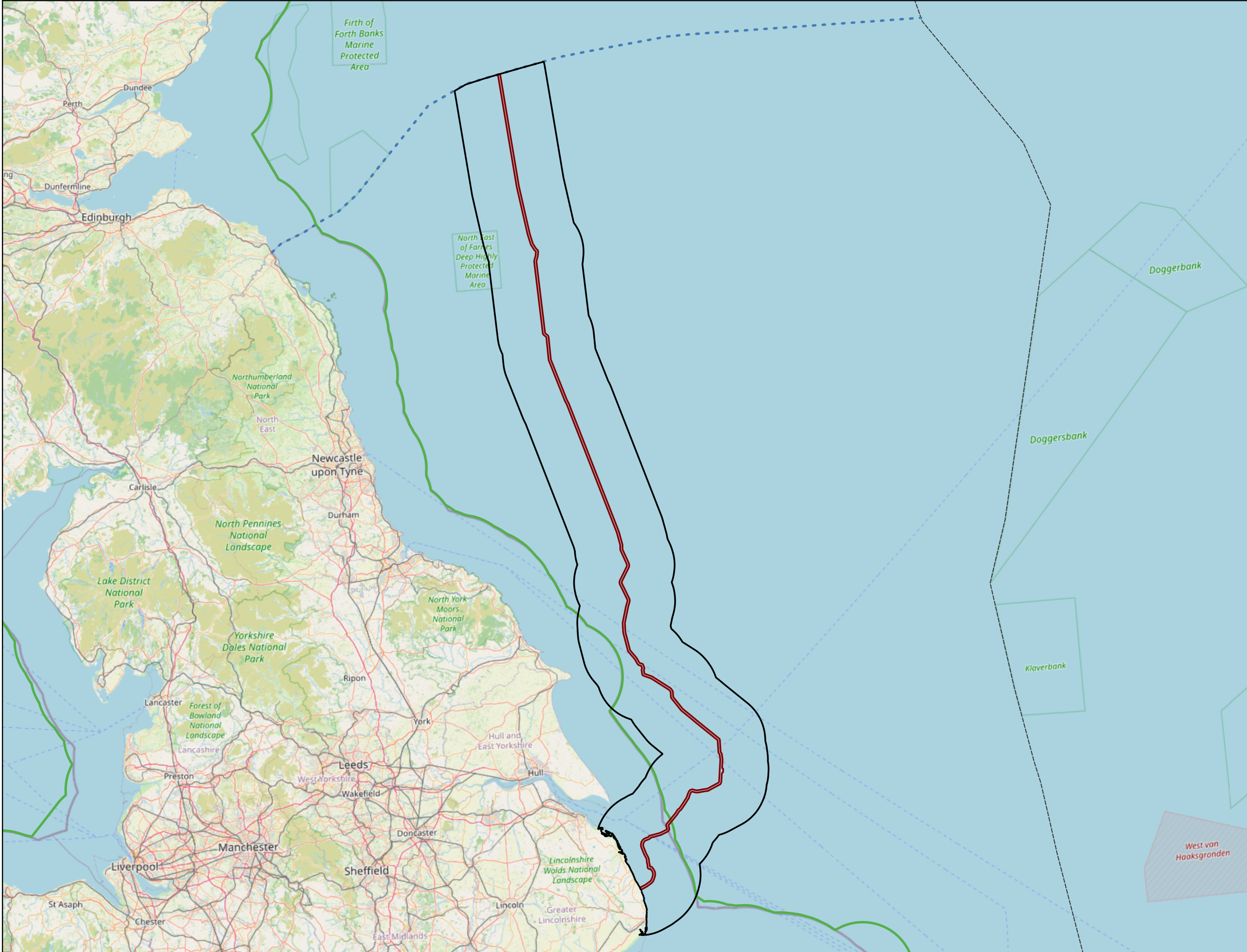




Figure 20-1
Chapter 20: Intertidal and Offshore Ornithology
Study Area for Intertidal and Offshore Ornithology

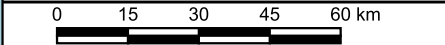


- Legend**
- English Offshore Scheme draft Order Limits
 - Study Area (19.8 km buffer either side of the draft Order Limits)
 - Scottish Marine Border
 - 12 NM Limit
 - EEZ

Notes
This drawing is scaled at paper size A3, therefore any prints taken at smaller sizes will affect accuracy of the measurement units and should not be scaled against.



Coordinate System: WGS 84 / UTM zone 30N
Sheet X Centroid Coordinate: 716379E, Sheet Y Centroid Coordinate: 6087403N



Base map and data from OpenStreetMap and OpenStreetMap Foundation (CC-BY-SA).
https://www.openstreetmap.org and contributors. UKHO Contains public sector information licensed under the Open Government Licence v3.0. © Marine Management Organisation copyright and/or database right 2024. All rights reserved.

1	22/04/2026	DRAFT	MW	AN	EE
Issue	Date	Remarks	Drawn	Checked	Approved

Title
Figure 20-1
Chapter 20: Intertidal and Offshore Ornithology
Study Area for Intertidal and Offshore Ornithology
EGL 5 EIA Preliminary Environmental Information Report
Volume 3: Figures

nationalgrid

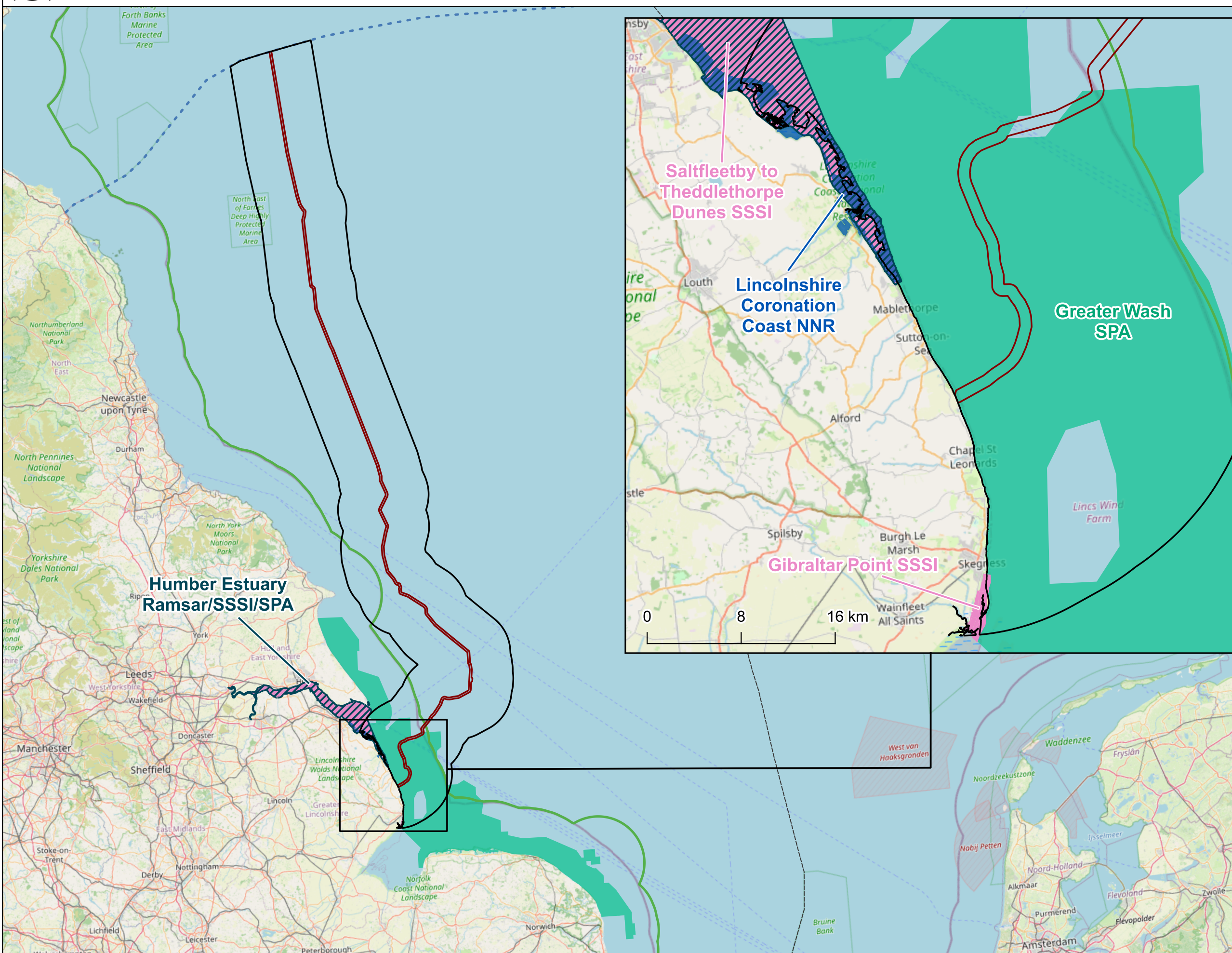
Figure Number Figure 20-1

Drawing Reference C01585-EGL5-PEIR-BIRD-001-C

Scale	Sheet Size	Sheet	Issue
1:1,600,000	A3	SHEET 1 OF 1	1



Figure 20-2
Chapter 20: Intertidal and Offshore Ornithology
Relevant Designated Sites for Intertidal and Offshore Ornithology



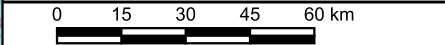
Legend

- English Offshore Scheme draft Order Limits
- Study Area (19.8 km buffer either side of the draft Order Limits)
- Ramsar Site
- Special Protection Area (SPA)
- Site of Special Scientific Interest (SSSI)
- National Nature Reserve (NNR)
- Scottish Marine Border
- 12 NM Limit
- EEZ

Notes
This drawing is scaled at paper size A3, therefore any prints taken at smaller sizes will affect accuracy of the measurement units and should not be scaled against.



Coordinate System: WGS 84 / UTM zone 30N
Sheet X Centroid Coordinate: 831601E, Sheet Y Centroid Coordinate: 6055702N



Re-use of the data is subject to the terms of the Open Government Licence v2.0 including attribution of the relevant copyright holder. The data is provided as a service to the public and is not intended to be used for any other purpose. The data is provided as a service to the public and is not intended to be used for any other purpose. The data is provided as a service to the public and is not intended to be used for any other purpose.

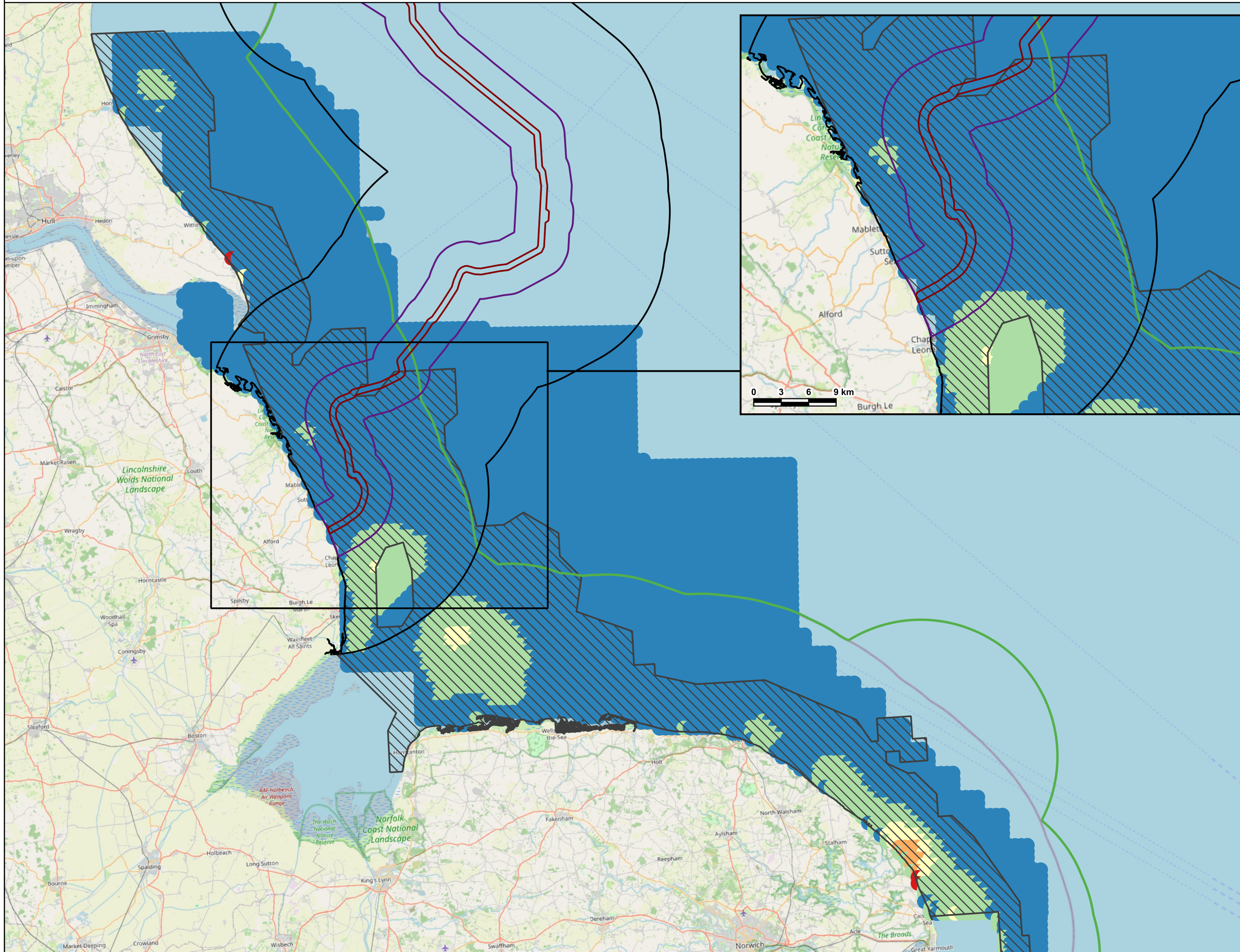
1	22/04/2026	DRAFT	MW	AN	EE
Issue	Date	Remarks	Drawn	Checked	Approved

Title
Figure 20-2
Chapter 20: Intertidal and Offshore Ornithology
Relevant Designated Sites for Intertidal and Offshore Ornithology
EGL 5 EIA Preliminary Environmental Information Report
Volume 3: Figures

nationalgrid	
Figure Number	Figure 20-2
Drawing Reference	C01585-EGL5-PEIR-BIRD-002-C
Scale	1:1,765,000
Sheet Size	A3
Sheet	SHEET 1 OF 1
Issue	1



Figure 20-3
Chapter 20: Intertidal and Offshore Ornithology
Red-Throated Diver Density Distribution



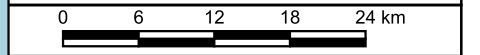
Legend

- English Offshore Scheme draft Order Limits
 - 4km Buffer Around draft Order Limits
 - Study Area (19.8 km buffer either side of the draft Order Limits)
 - Greater Wash SPA
- Red Throated Diver Density Distribution (Birds per km²) [Kernel Density Estimate]**
- > 0 - 0.5
 - 0.5 - 1
 - 1 - 1.5
 - 1.5 - 2
 - 2 - 3.5
 - 12 NM Limit

Notes
This drawing is scaled at paper size A3, therefore any prints taken at smaller sizes will affect accuracy of the measurement units and should not be scaled against.



Coordinate System: ETRS89 / UTM zone 30N
Sheet X Centroid Coordinate: 770825E, Sheet Y Centroid Coordinate: 5916121N



Contains JNCC/ Natural England/ UKHO (OGL v3)/ Ordnance Survey data
©Contains public sector information licensed under the Open Government Licence v3.0. Base map and data from OpenStreetMap Foundation (CC-BY-SA) @https://www.openstreetmap.org and contributors. All rights reserved.

1	22/04/2026	DRAFT	AN	JC	EE
Issue	Date	Remarks	Drawn	Checked	Approved

Title
Figure 20-3
Chapter 20: Intertidal and Offshore Ornithology
Red-Throated Diver Density Distribution
EGL 5 EIA Preliminary Environmental Information Report
Volume 3: Figures

nationalgrid

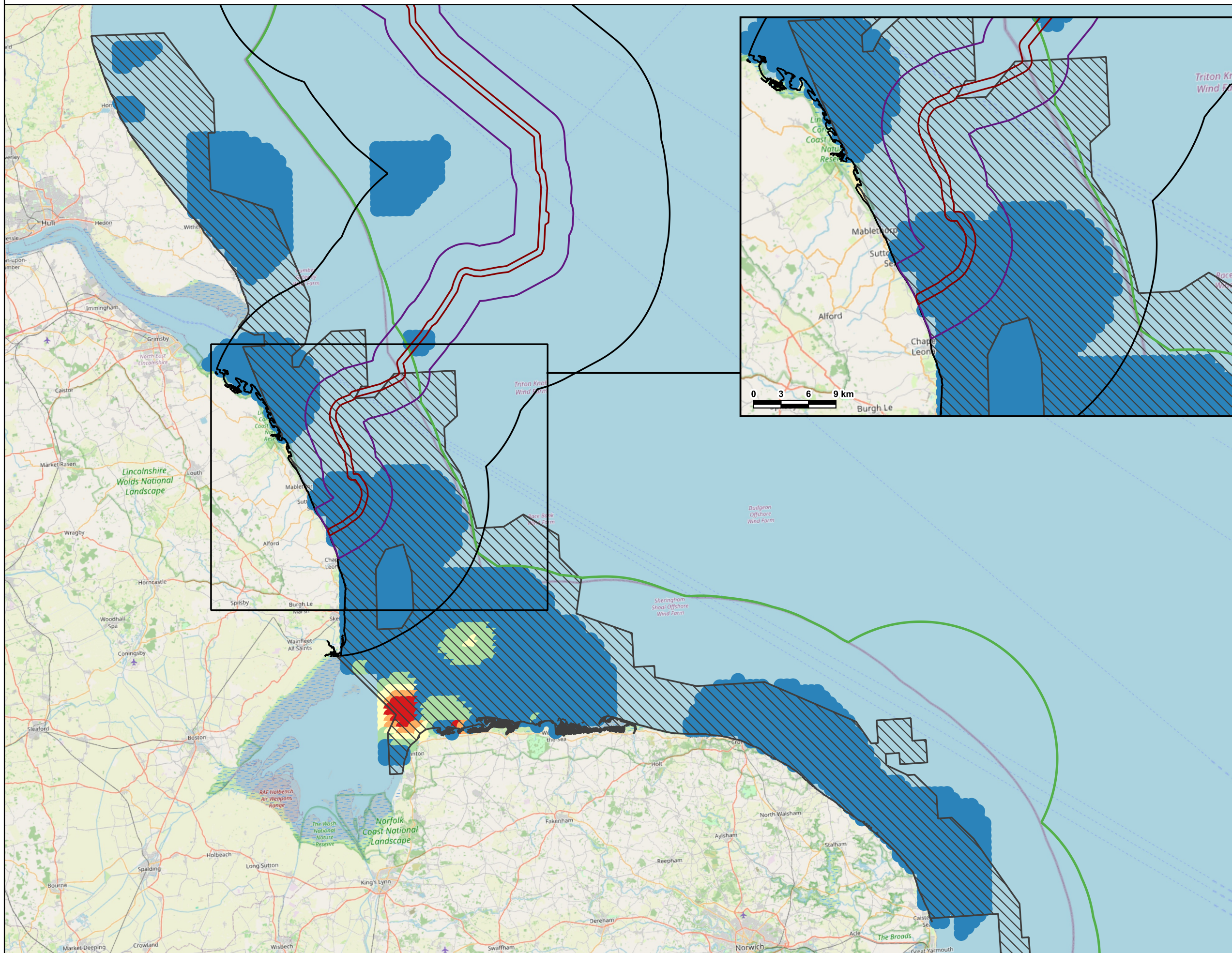
Figure Number Figure 20-3

Drawing Reference C01585-EGL5-PEIR-BIRD-004-C

Scale	Sheet Size	Sheet	Issue
1:600,000	A3	SHEET 1 OF 1	1



Figure 20-4
Chapter 20: Intertidal and Offshore Ornithology
Common Scoter Density Distribution



Legend

- English Offshore Scheme draft Order Limits
- 4km Buffer Around draft Order Limits
- Study Area (19.8 km buffer either side of the draft Order Limits)
- Greater Wash SPA

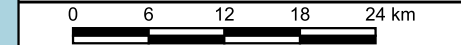
Common Scoter Density Distribution (Birds per km²) [Kernel Density Estimate]

- > 0 - 10
- 10 - 20
- 20 - 30
- 30 - 40
- 40 - 57

Notes
This drawing is scaled at paper size A3, therefore any prints taken at smaller sizes will affect accuracy of the measurement units and should not be scaled against.



Coordinate System: ETRS89 / UTM zone 30N
Sheet X Centroid Coordinate: 770825E, Sheet Y Centroid Coordinate: 5916121N



Contains JNCC/ Natural England/ UKHO (OGL v3)/ Ordnance Survey data
©Contains public sector information licensed under the Open Government Licence v3.0. Base map and data from OpenStreetMap Foundation (CC-BY-SA) @https://www.openstreetmap.org and contributors. All rights reserved.

1	22/04/2026	DRAFT	AN	JC	EE
Issue	Date	Remarks	Drawn	Checked	Approved

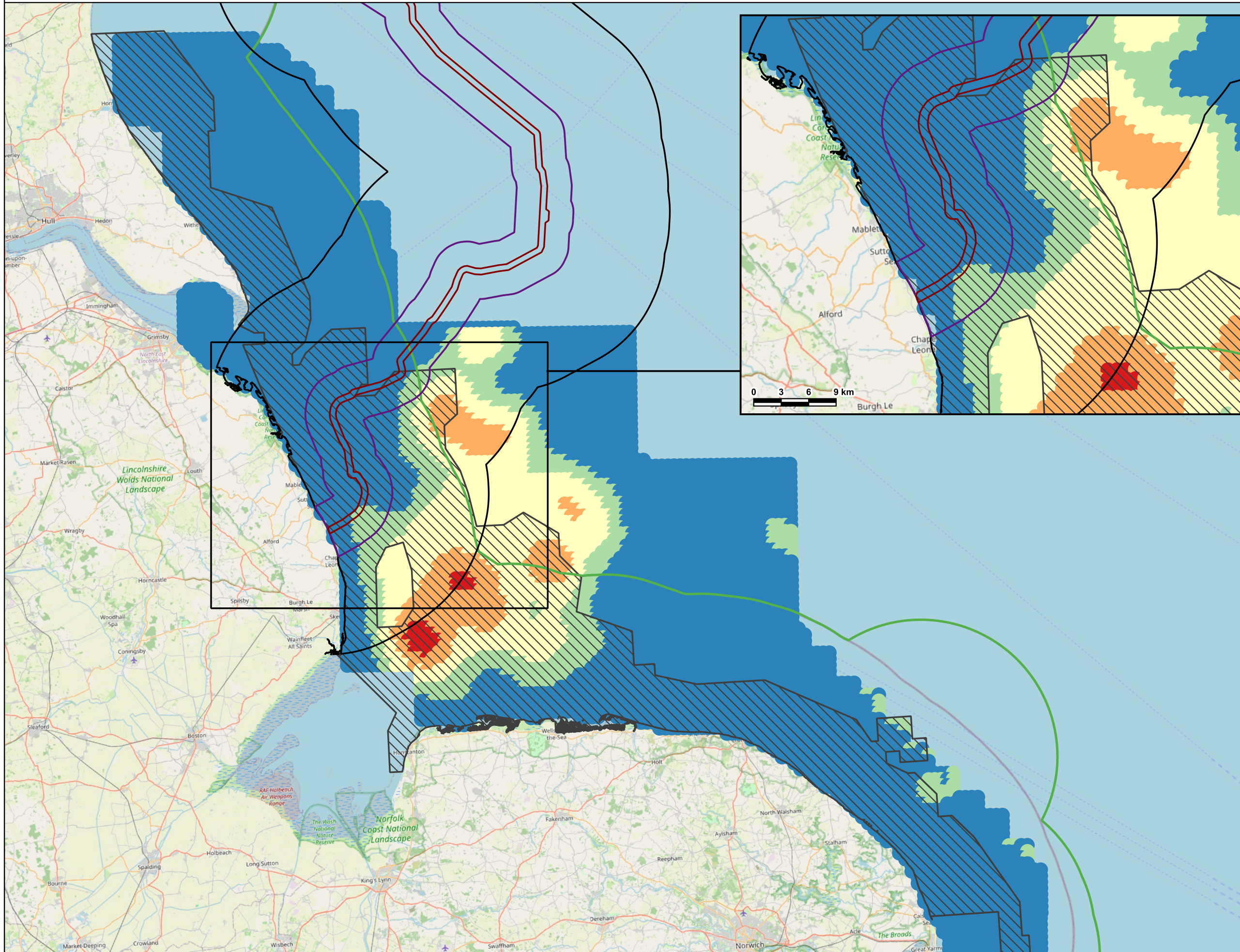
Title

Figure 20-4
Chapter 20: Intertidal and Offshore Ornithology
Common Scoter Density Distribution
EGL 5 EIA Preliminary Environmental Information Report
Volume 3: Figures

nationalgrid			
Figure Number	Figure 20-4		
Drawing Reference	C01585-EGL5-PEIR-BIRD-006-C		
Scale	Sheet Size	Sheet	Issue
1:600,000	A3	SHEET 1 OF 1	1



Figure 20-5
Chapter 20: Intertidal and Offshore Ornithology
Little Gull Density Distribution



Legend

- English Offshore Scheme draft Order Limits
- 4km Buffer Around draft Order Limits
- Study Area (19.8 km buffer either side of the draft Order Limits)
- Greater Wash SPA

**Little Gull Density Distribution
(Birds per km²)
[Kernel Density Estimate]**

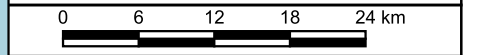
- 0 - 0.1
- 0.1 - 0.25
- 0.25 - 0.50
- 0.50 - 0.75
- 0.75 - 0.89
- 12 NM Limit

Notes

This drawing is scaled at paper size A3, therefore any prints taken at smaller sizes will affect accuracy of the measurement units and should not be scaled against.



Coordinate System: ETRS89 / UTM zone 30N
Sheet X Centroid Coordinate: 770825E, Sheet Y Centroid Coordinate: 5916121N



Contains JNCC/ Natural England/ UKHO (OGL v3)/ Ordnance Survey data
©Contains public sector information licensed under the Open Government Licence v3.0. Base map and data from OpenStreetMap Foundation (CC-BY-SA) @https://www.openstreetmap.org and contributors. All rights reserved.

1	22/04/2026	DRAFT	AN	JC	EE
Issue	Date	Remarks	Drawn	Checked	Approved

Title

Figure 20-5
Chapter 20: Intertidal and Offshore
Ornithology
Little Gull Density Distribution
EGL 5 EIA Preliminary Environmental
Information Report
Volume 3: Figures

nationalgrid

Figure Number Figure 20-5

Drawing Reference C01585-EGL5-PEIR-BIRD-005-C

Scale	Sheet Size	Sheet	Issue
1:600,000	A3	SHEET 1 OF 1	1