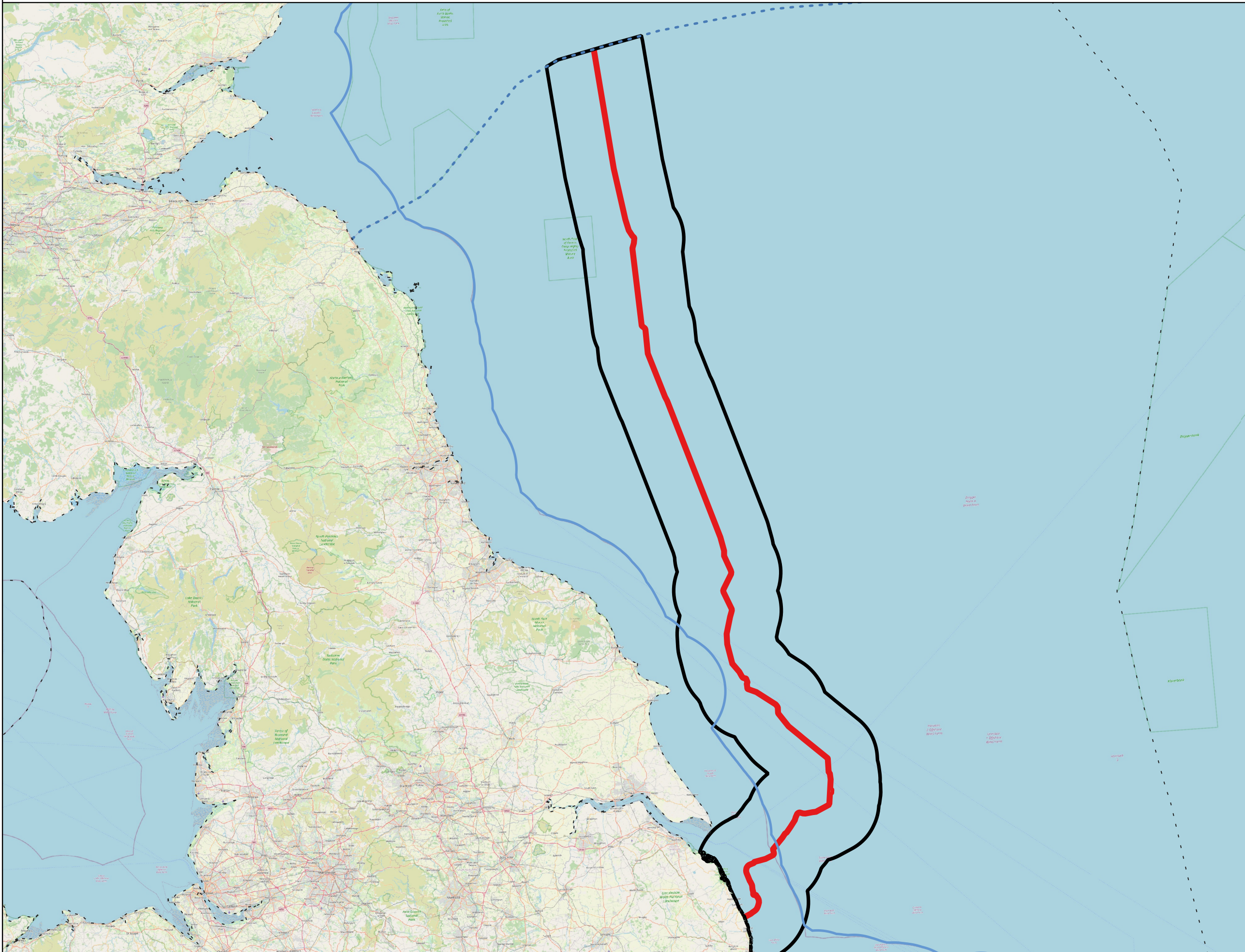




Figure 19-1  
Chapter 19: Fish and Shellfish Ecology  
Fish and Shellfish Study Area



**Legend**

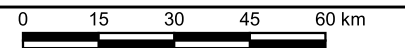
- draft Order Limits
- Study Area (19.8 km buffer either side of draft Order Limits)
- EEZ
- Scottish Marine Border
- 12 NM Limit

**Notes**

This drawing is scaled at paper size A3, therefore any prints taken at smaller sizes will affect accuracy of the measurement units and should not be scaled against.



Coordinate System: ETRS89 / UTM zone 30N  
Sheet X Centroid Coordinate: 673638E, Sheet Y Centroid Coordinate: 6087404N



Basemap: OpenStreetMap © OSM Contributors, CC-BY-SA. UKHO Contains public sector information licensed under the Open Government Licence v3.0.

1	19/03/2026	-	JDB	MDC	JDB
Issue	Date	Remarks	Drawn	Checked	Approved

**Title**

Figure 19-1  
Chapter 19: Fish and Shellfish Ecology  
Fish and Shellfish Study Area.  
EGL 5 EIA Preliminary Environmental  
Information Report  
Volume 3: Figures

**nationalgrid**

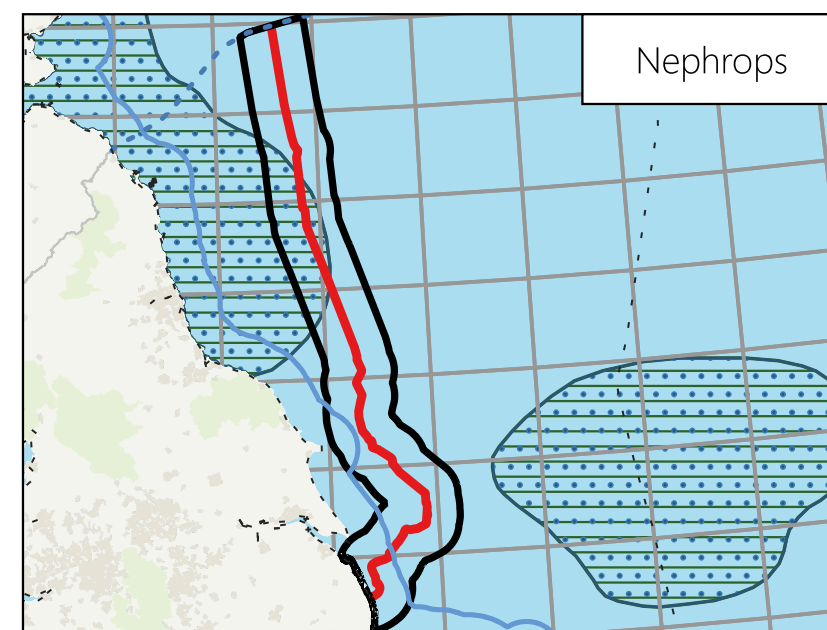
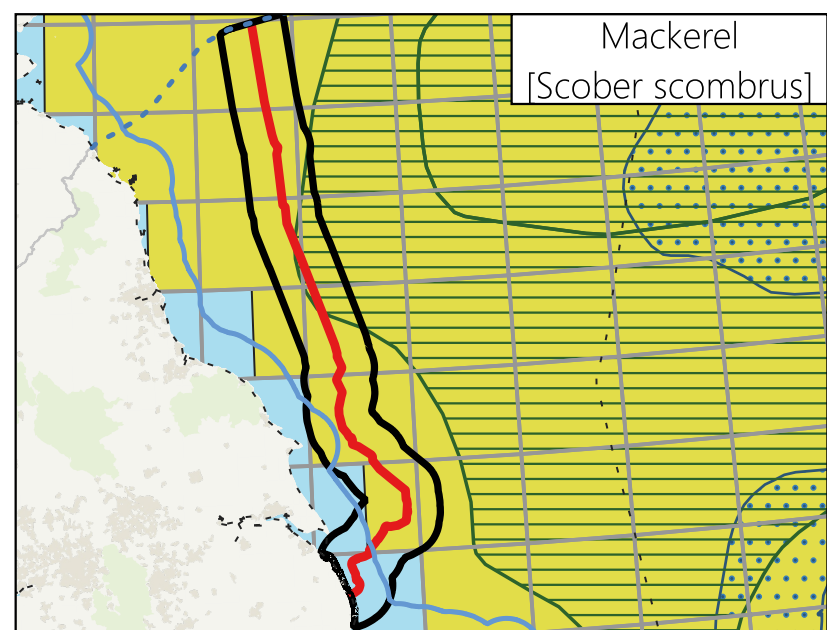
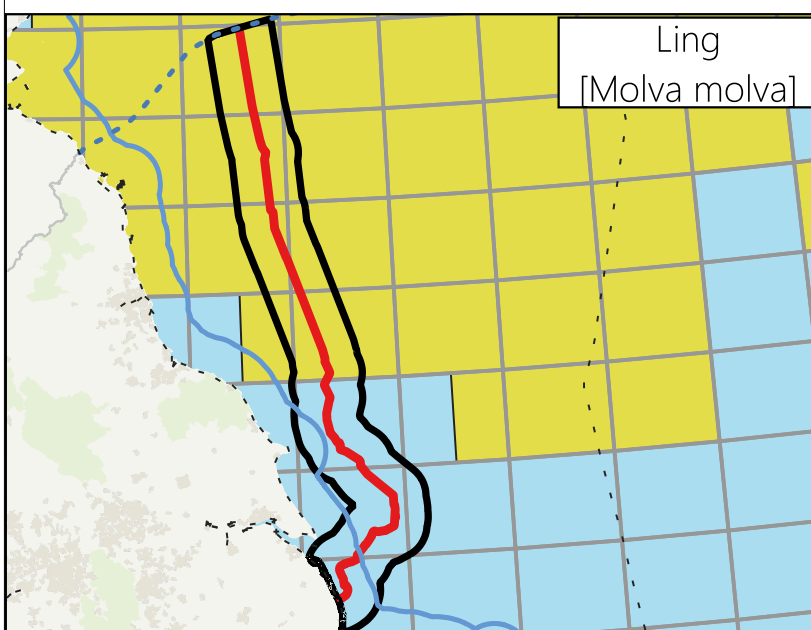
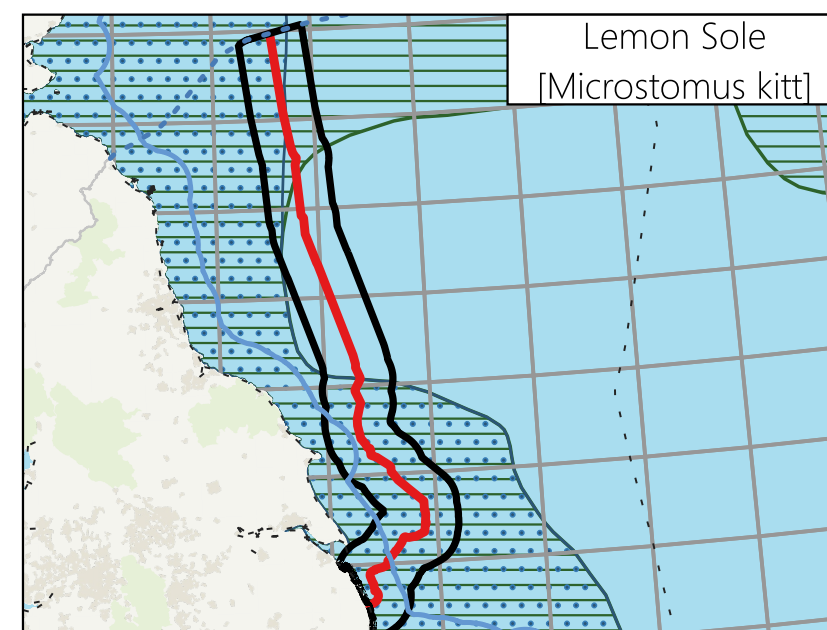
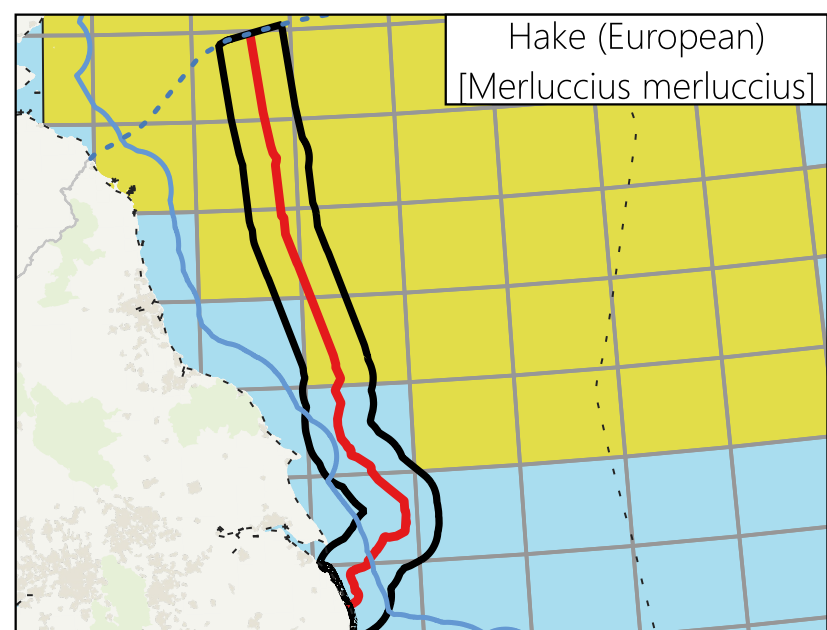
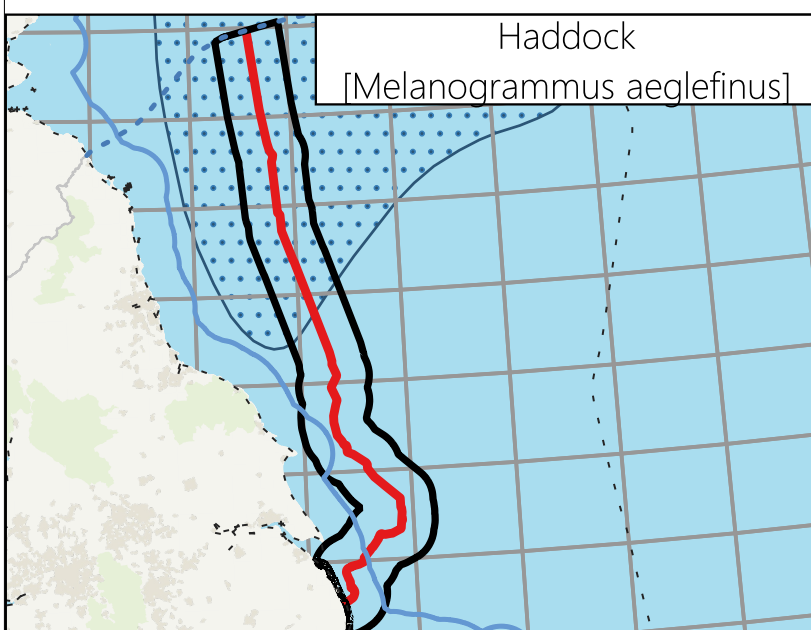
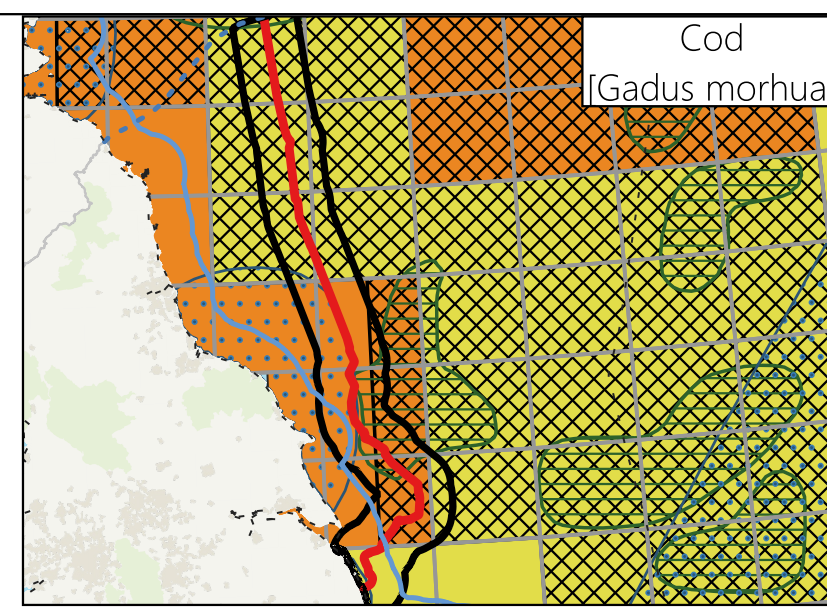
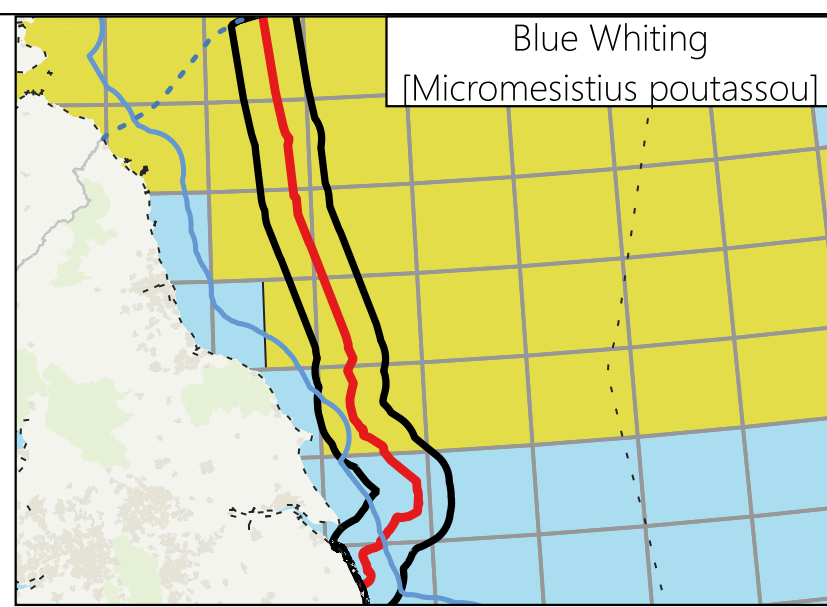
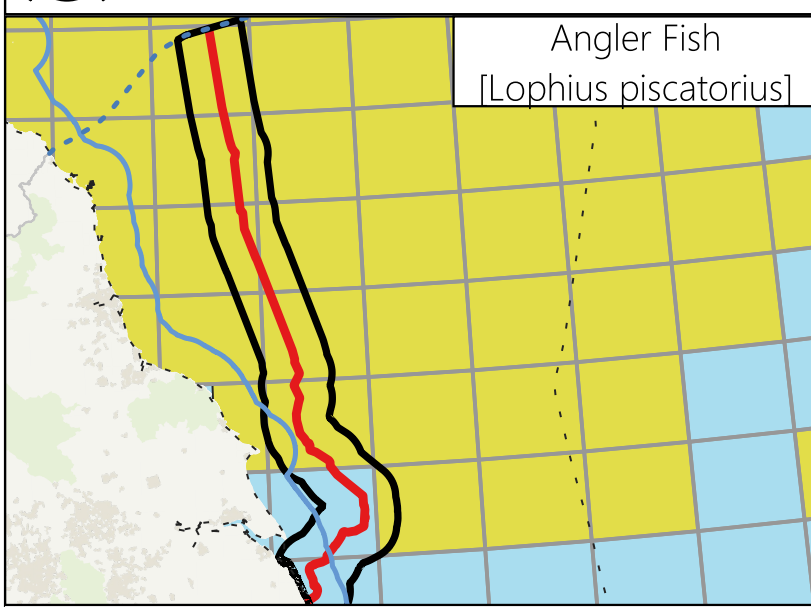
**Figure Number** Figure 19-1

**Drawing Reference** J0931-25-12-18\_EGL5\_001

Scale	Sheet Size	Sheet	Issue
1:1,500,000	A3	SHEET 1 OF 1	3



Figure 19-2  
Chapter 19: Fish and Shellfish Ecology  
Fish Nursery and Spawning Grounds with Intensity of Activity within the Study Area - Map 1



**Legend**

- draft Order Limits
- Study Area (19.8 km either side of draft Order Limits)
- ICES Rectangles

Spawning and Nursery Ground (Coul et al., 1998)

- Nursery
- Spawning

Spawning Ground with Intensity (Ellis et al., 2012)

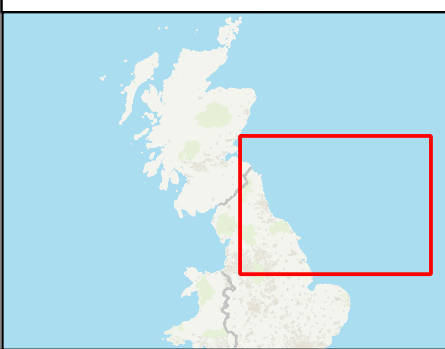
- High
- Low

Nursery Ground with Intensity (Ellis et al., 2012)

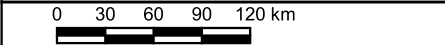
- High
- Low

- Scottish Marine Border
- 12 NM Limit
- EEZ

Notes This drawing is scaled at paper size A3, therefore any prints taken at smaller sizes will affect accuracy of the measurement units and should not be scaled against.



Coordinate System: ETRS89 / UTM zone 30N  
Sheet X Centroid Coordinate: 785528E, Sheet Y Centroid Coordinate: 6087786N



UKHO/Cefas - Spawning and Nursery Grounds Layers for Selected Fish in UK Waters 1998/2010/2012 by Coul et al. and Ellis et al. Contains public sector information licensed under the Open Government Licence v3.0. ICES Statistical Rectangles 2025 - All public data are under the Creative Commons (CC) by 4.0 licence. Basemap: OS OpenZoomStack contains OS data © Crown copyright and database right 2025.

3	19/03/2026	DRAFT	JDB	MDC	MDC
Issue	Date	Remarks	Drawn	Checked	Approved

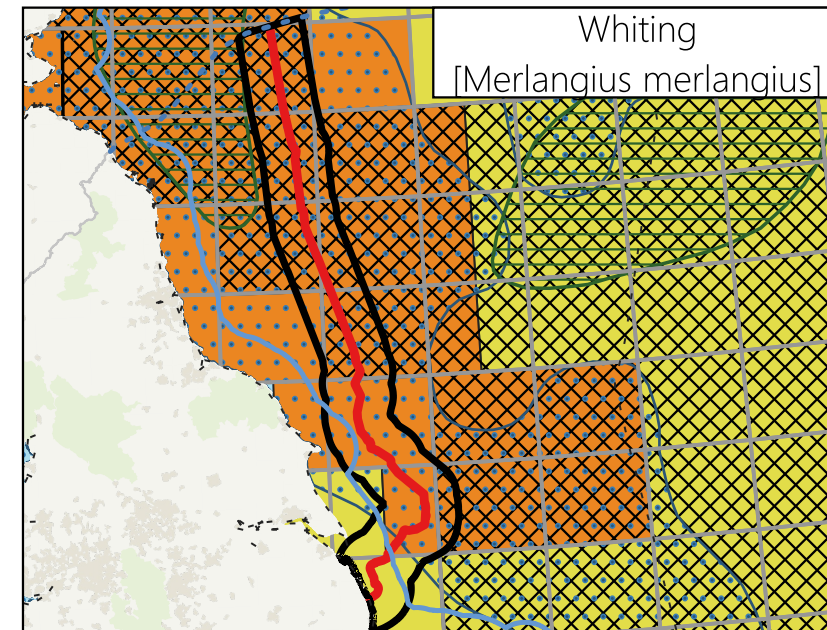
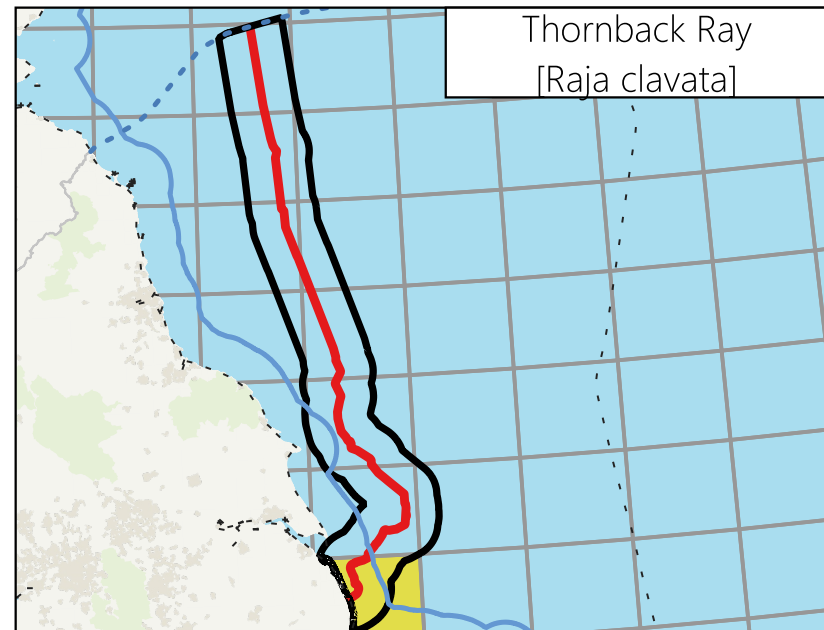
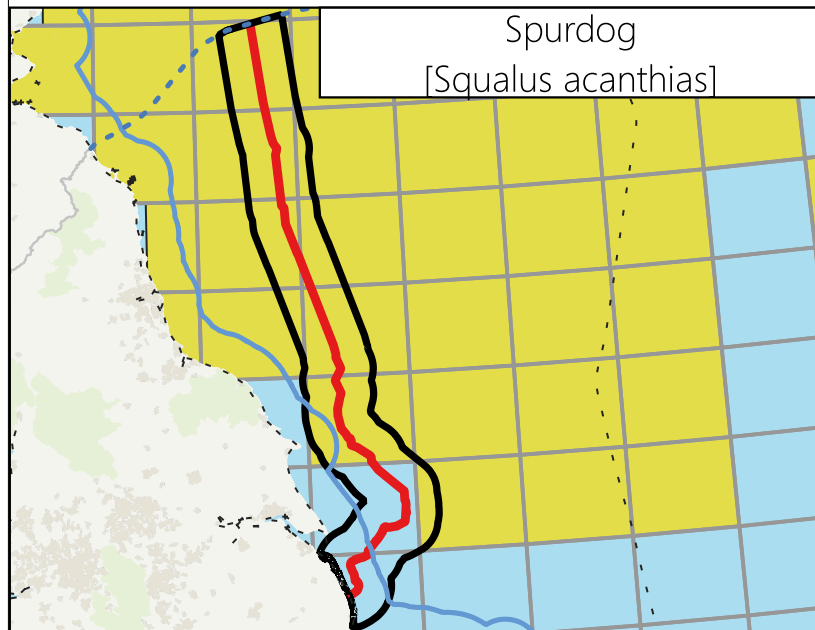
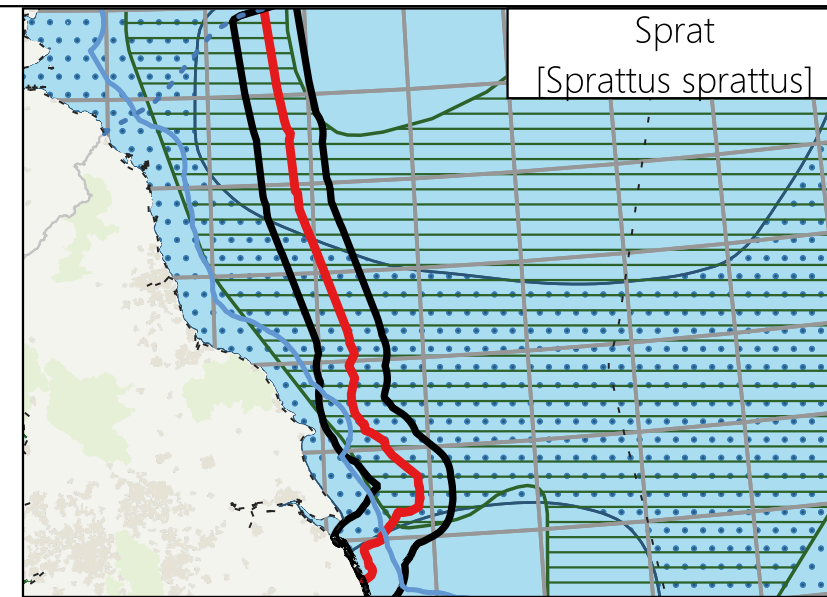
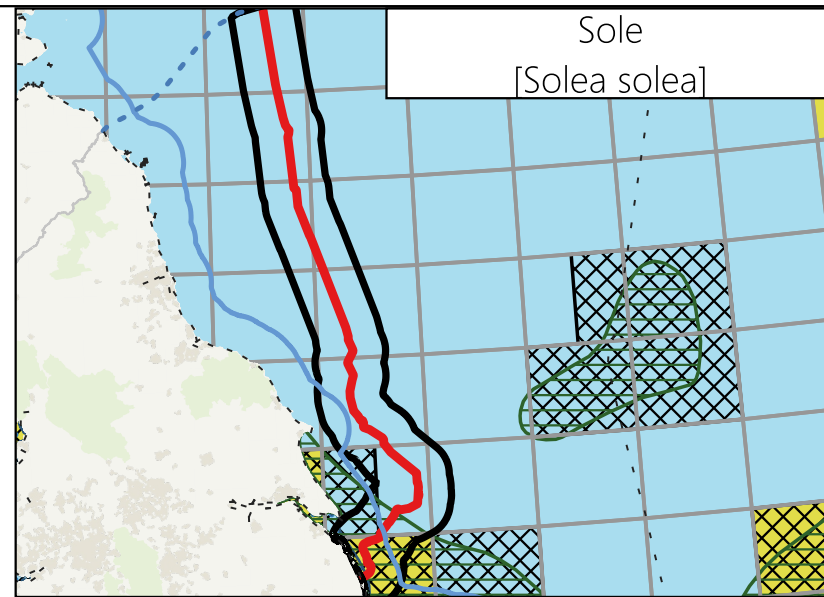
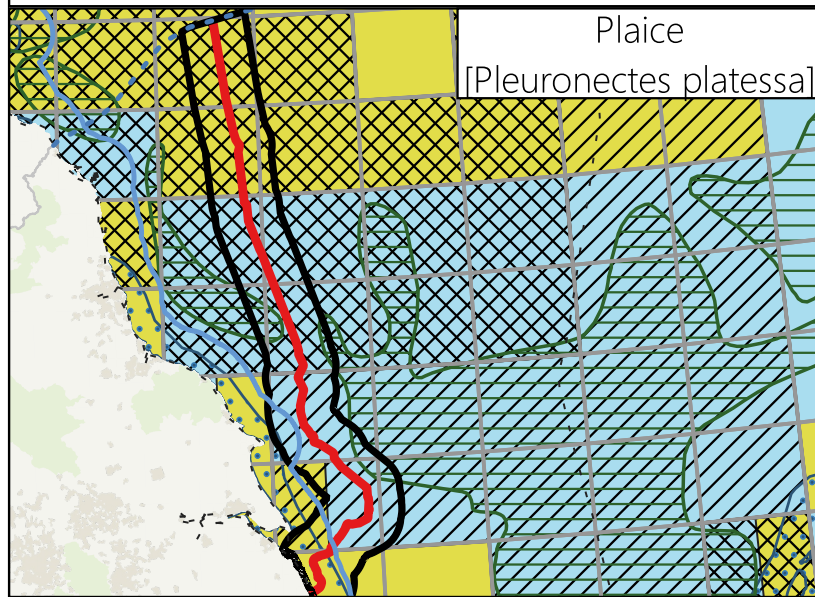
**Title**

Figure 19-2  
Chapter 19: Fish and Shellfish Ecology  
Fish Nursery and Spawning Grounds with Intensity of Activity within the Study Area - Map 1  
EGL 5 EIA Preliminary Environmental Information Report  
Volume 3: Figures

<b>nationalgrid</b>	
Figure Number	Figure 19-2
Drawing Reference	J0931-25-12-18_EGL5_002
Scale	1:4,700,000
Sheet Size	A3
Sheet	SHEET 1 OF 1
Issue	3



Figure 19-3  
Chapter 19: Fish and Shellfish Ecology  
Fish Nursery and Spawning Grounds with Intensity of Activity within the Study Area - Map 2



**Legend**

- draft Order Limits
- Study Area (19.8 km either side of draft Order Limits)
- ICES Rectangles

Spawning and Nursery Ground (Coul et al., 1998)

- Nursery
- Spawning

Spawning Ground with Intensity (Ellis et al., 2012)

- High
- Low

Nursery Ground with Intensity (Ellis et al., 2012)

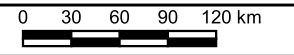
- High
- Low

- Scottish Marine Border
- 12 NM Limit
- EEZ

Notes This drawing is scaled at paper size A3, therefore any prints taken at smaller sizes will affect accuracy of the measurement units and should not be scaled against.



Coordinate System: ETRS89 / UTM zone 30N  
Sheet X Centroid Coordinate: 785528E, Sheet Y Centroid Coordinate: 6087786N



UKHO/Cefas - Spawning and Nursery Grounds Layers for Selected Fish in UK Waters 1998/2010/2012 by Coul et al. and Ellis et al. Contains public sector information licensed under the Open Government Licence v3.0. ICES Statistical Rectangles 2025 - All public data are under the Creative Commons (CC) by 4.0 licence. Basemap: OS OpenZoomStack contains OS data © Crown copyright and database right 2025.

3	19/03/2026	DRAFT	JDB	MDC	MDC
Issue	Date	Remarks	Drawn	Checked	Approved

**Title**

Figure 19-3  
Chapter 19: Fish and Shellfish Ecology  
Fish Nursery and Spawning Grounds with Intensity of Activity within the Study Area - Map 2  
EGL 5 EIA Preliminary Environmental Information Report  
Volume 3: Figures

**nationalgrid**

Figure Number: Figure 19-3

Drawing Reference: J0931-25-12-18\_EGL5\_003

Scale	Sheet Size	Sheet	Issue
1:4,700,000	A3	SHEET 1 OF 1	3



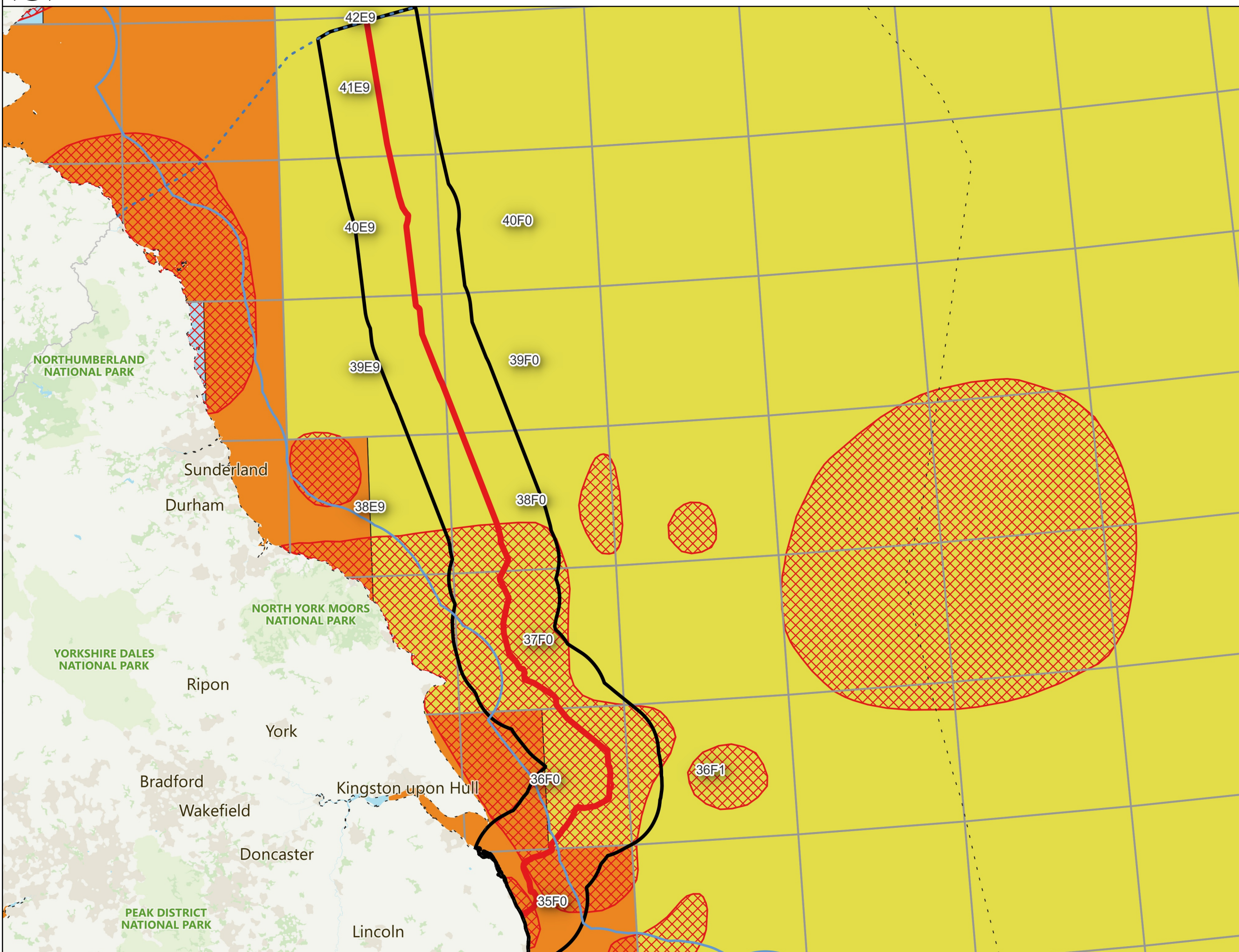
Figure 19-4  
Chapter 19: Fish and Shellfish Ecology  
Herring Spawning and Nursery Grounds

**Legend**

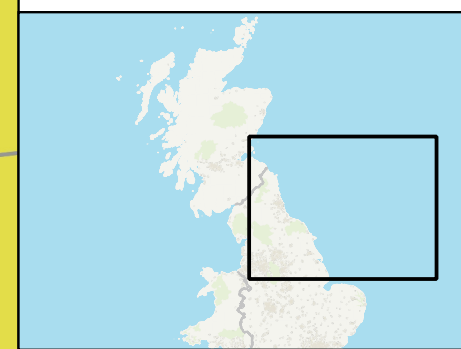
- draft Order Limits
- Study Area (19.8 km either side of draft Order Limits)
- ICES Rectangles
- Herring Spawning and Nursery Ground (Coull et al., 1998)

Herring Nursery Ground with Intensity (Ellis et al., 2012)

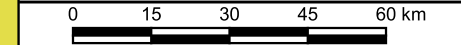
- High
- Low
- Scottish Marine Border
- 12 NM Limit
- EEZ



**Notes** This drawing is scaled at paper size A3, therefore any prints taken at smaller sizes will affect accuracy of the measurement units and should not be scaled against.



Coordinate System: ETRS89 / UTM zone 30N  
Sheet X Centroid Coordinate: 762596E, Sheet Y Centroid Coordinate: 6080561N



UKHO/Cefas - Spawning and Nursery Grounds Layers for Selected Fish in UK Waters 1998/2010/2012 by Coull et al. and Ellis et al. Contains public sector information licensed under the Open Government Licence v3.0. ICES Statistical Rectangles 2025 - All public data are under the Creative Commons (CC) by 4.0 licence. Basemap: OS OpenZoomStack contains OS data © Crown copyright and database right 2025.

3	27/03/2026	DRAFT	JDB	MDC	MDC
Issue	Date	Remarks	Drawn	Checked	Approved

**Title**

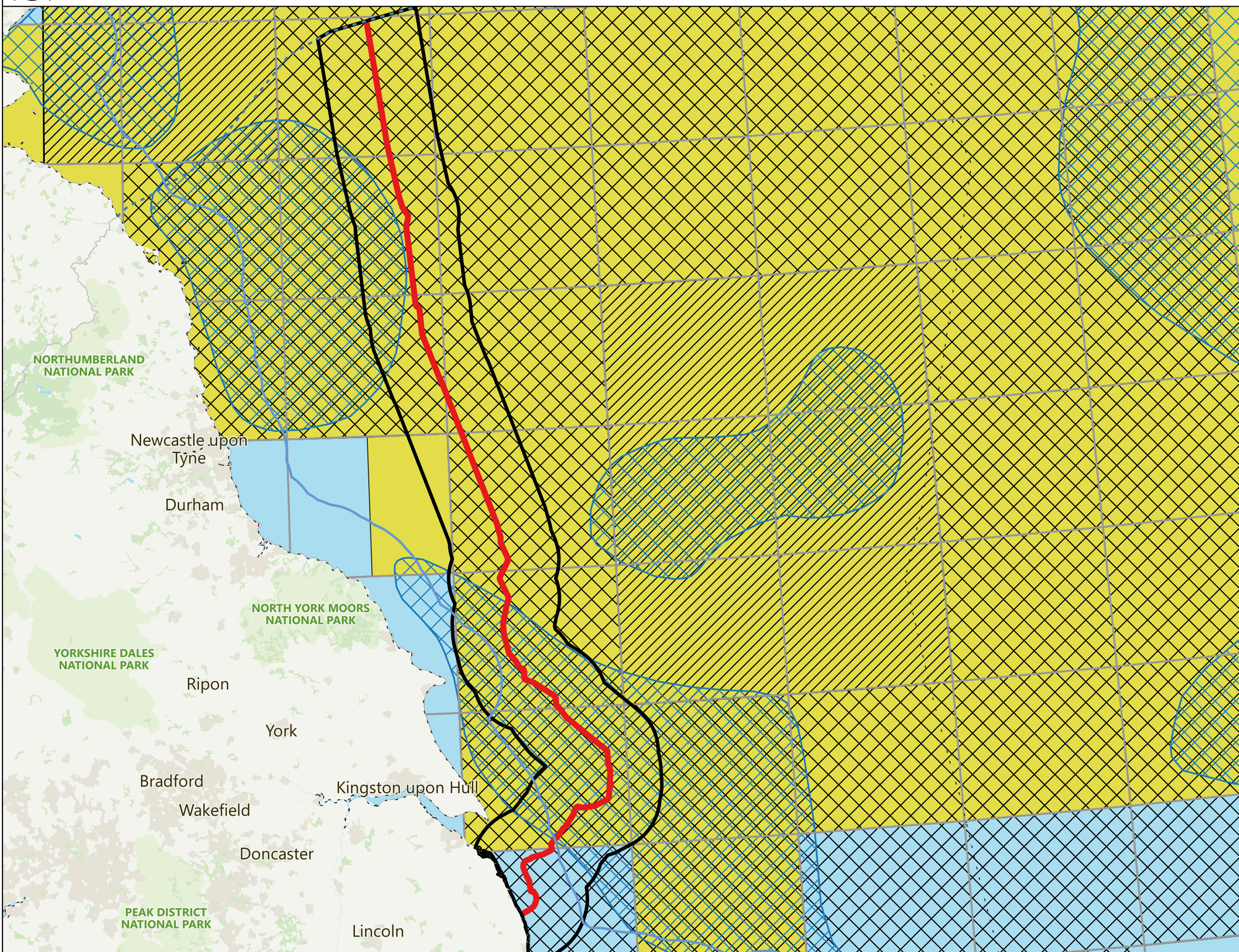
Figure 19-4  
Chapter 19: Fish and Shellfish Ecology  
Herring Spawning and Nursery Grounds  
EGL 5 EIA Preliminary Environmental Information Report  
Volume 3: Figures

<b>nationalgrid</b>	
Figure Number	Figure 19-4
Drawing Reference	J0931-25-12-18_EGL5_004
Scale	1:1,450,000
Sheet Size	A3
Sheet	SHEET 1 OF 1
Issue	4

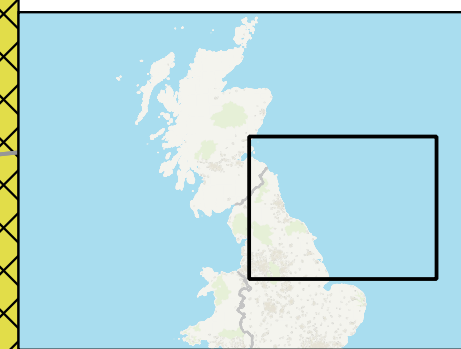


Figure 19-5  
Chapter 19: Fish and Shellfish Ecology  
Sandeel Spawning and Nursery Grounds

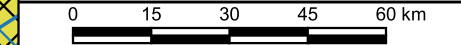
- Legend**
- draft Order Limits
  - Study Area (19.8 km either side of draft Order Limits)
  - ICES Rectangles
  - Sandeel Spawning Grounds (Coul et al., 1998)
  - Sandeel Spawning Grounds with intensity (Ellis et al., 2012)
    - High
    - Low
  - Sandeel Nursery Grounds with Intensity (Ellis et al., 2012)
    - Low
  - Scottish Marine Border
  - 12 NM Limit
  - EEZ



**Notes** This drawing is scaled at paper size A3, therefore any prints taken at smaller sizes will affect accuracy of the measurement units and should not be scaled against.



Coordinate System: ETRS89 / UTM zone 30N  
Sheet X Centroid Coordinate: 782586E, Sheet Y Centroid Coordinate: 6080561N



UKHO/Cefas - Spawning and Nursery Grounds Layers for Selected Fish in UK Waters 1998/2010/2012 by Coul et al. and Ellis et al. Contains public sector information licensed under the Open Government Licence v3.0. ICES Statistical Rectangles 2025 - All public data are under the Creative Commons (CC by 4.0) licence. Basemap: OS OpenZoomStack contains OS data © Crown copyright and database right 2025.

3	27/03/2026	DRAFT	JDB	MDC	MDC
Issue	Date	Remarks	Drawn	Checked	Approved

**Title**

Figure 19-5  
Chapter 19: Fish and Shellfish Ecology  
Sandeel Spawning and Nursery Ecology  
EGL 5 EIA Preliminary Environmental Information Report  
Volume 3: Figures

**nationalgrid**

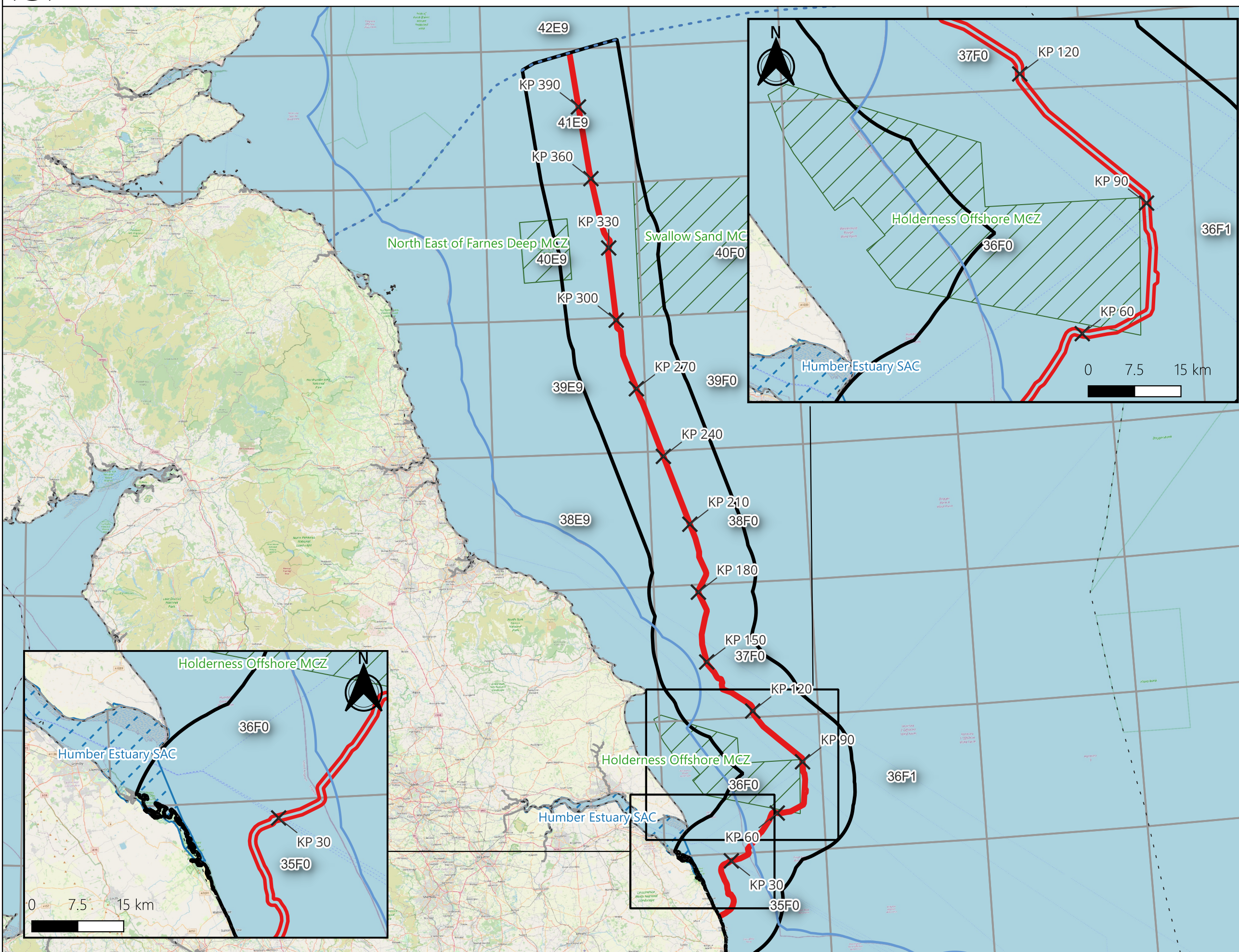
Figure Number: Figure 19-5

Drawing Reference: J0931-25-12-18\_EGL5\_005

Scale	Sheet Size	Sheet	Issue
1:1,450,000	A3	SHEET 1 OF 1	4



Figure 19-6  
Chapter 19: Fish and Shellfish Ecology  
Designated Sites within the Fish and Shellfish Study Area.



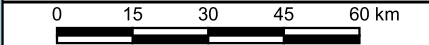
**Legend**

- draft Order Limits
- Study Area (19.8 km buffer either side of draft Order Limits)
- Indicative KP**
- (Labelled at 30 km intervals)
- Marine Conservation Zones
- Special Area of Conservation
- ICES Rectangles
- Scottish Marine Border
- 12 NM Limit
- EEZ

**Notes**  
This drawing is scaled at paper size A3, therefore any prints taken at smaller sizes will affect accuracy of the measurement units and should not be scaled against.



Coordinate System: ETRS89 / UTM zone 30N  
Sheet X Centroid Coordinate: 682486E, Sheet Y Centroid Coordinate: 6087404N



Basemap: OS OpenZoomStack © Ordnance Survey and/or Database Right, 2026. UKHO Contains public sector information licensed under the Open Government Licence v3.0. © JNCC Copyright. © Natural England Copyright. Contains Ordnance Survey data © Crown Copyright and database right 2026.

1	27/03/2026	-	JDB	MDC	JDB
Issue	Date	Remarks	Drawn	Checked	Approved

**Title**  
Figure 19-6  
Chapter 19: Fish and Shellfish Ecology  
Designated Sites within the Fish and Shellfish  
Study Area  
EGL 5 EIA Preliminary Environmental  
Information Report  
Volume 3: Figures

<b>Figure Number</b>	Figure 19-6		
<b>Drawing Reference</b>	J0931-25-12-18_EGL5_006		
<b>Scale</b>	<b>Sheet Size</b>	<b>Sheet</b>	<b>Issue</b>
1:1,500,000	A3	SHEET 1 OF 1	4