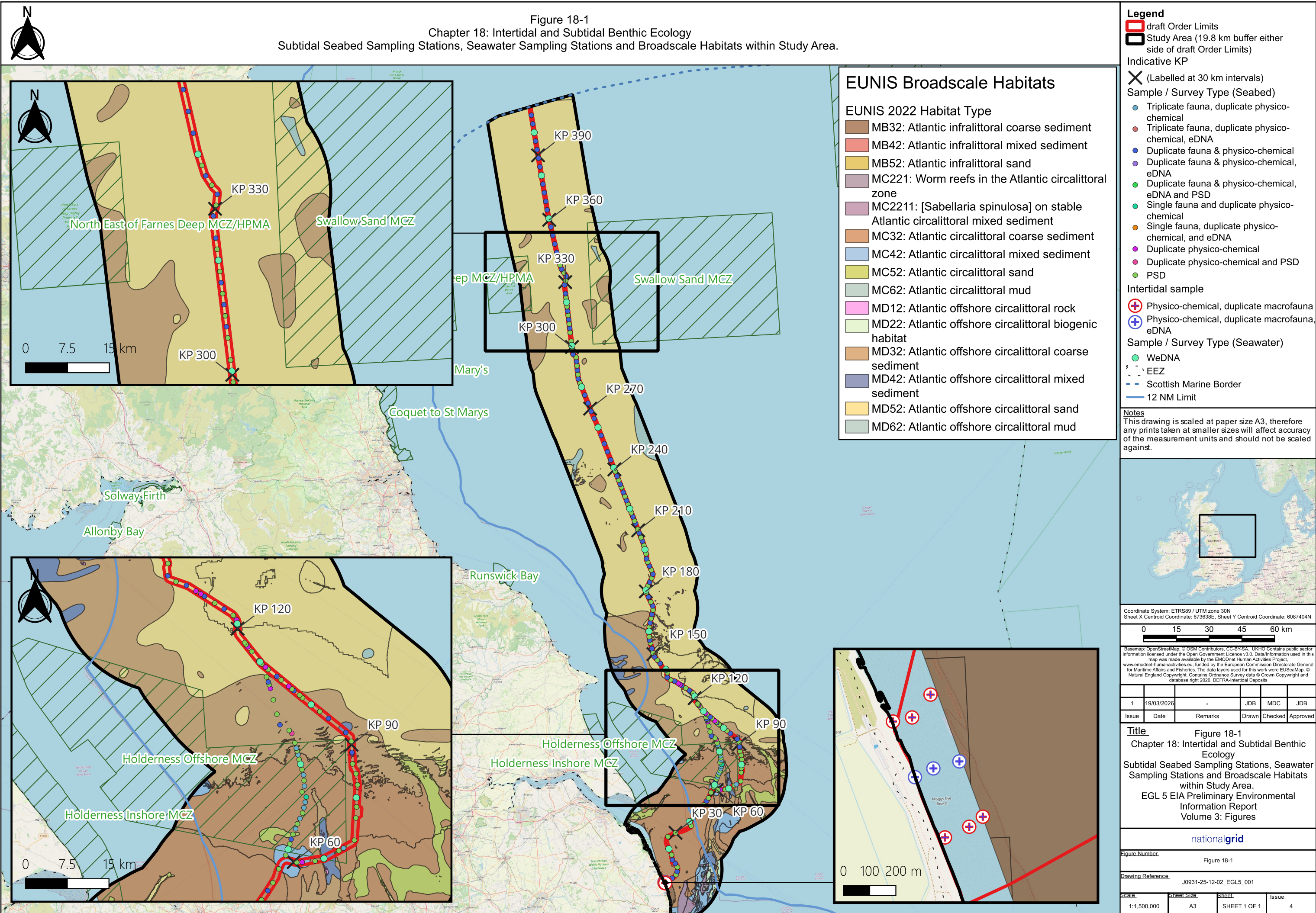


Figure 18-1
 Chapter 18: Intertidal and Subtidal Benthic Ecology
 Subtidal Seabed Sampling Stations, Seawater Sampling Stations and Broadscale Habitats within Study Area.



- ### EUNIS Broadscale Habitats
- EUNIS 2022 Habitat Type**
- MB32: Atlantic infralittoral coarse sediment
 - MB42: Atlantic infralittoral mixed sediment
 - MB52: Atlantic infralittoral sand
 - MC221: Worm reefs in the Atlantic circalittoral zone
 - MC2211: [*Sabellaria spinulosa*] on stable Atlantic circalittoral mixed sediment
 - MC32: Atlantic circalittoral coarse sediment
 - MC42: Atlantic circalittoral mixed sediment
 - MC52: Atlantic circalittoral sand
 - MC62: Atlantic circalittoral mud
 - MD12: Atlantic offshore circalittoral rock
 - MD22: Atlantic offshore circalittoral biogenic habitat
 - MD32: Atlantic offshore circalittoral coarse sediment
 - MD42: Atlantic offshore circalittoral mixed sediment
 - MD52: Atlantic offshore circalittoral sand
 - MD62: Atlantic offshore circalittoral mud

- ### Legend
- draft Order Limits
 - Study Area (19.8 km buffer either side of draft Order Limits)
- Indicative KP**
- X (Labelled at 30 km intervals)
- Sample / Survey Type (Seabed)**
- Triplicate fauna, duplicate physico-chemical
 - Triplicate fauna, duplicate physico-chemical, eDNA
 - Duplicate fauna & physico-chemical
 - Duplicate fauna & physico-chemical, eDNA
 - Duplicate fauna & physico-chemical, eDNA and PSD
 - Single fauna and duplicate physico-chemical
 - Single fauna, duplicate physico-chemical, and eDNA
 - Duplicate physico-chemical
 - Duplicate physico-chemical and PSD
 - PSD
- Intertidal sample**
- ⊕ Physico-chemical, duplicate macrofauna
 - ⊕ Physico-chemical, duplicate macrofauna, eDNA
- Sample / Survey Type (Seawater)**
- WeDNA
 - EEZ
 - Scottish Marine Border
 - 12 NM Limit

Notes
 This drawing is scaled at paper size A3, therefore any prints taken at smaller sizes will affect accuracy of the measurement units and should not be scaled against.



Coordinate System: ETRS89 / UTM zone 30N
 Sheet X Centroid Coordinate: 673638E, Sheet Y Centroid Coordinate: 6087404N

0 15 30 45 60 km

Basemap: OpenStreetMap, © OSM Contributors, CC-BY-SA. UKHO Contains public sector information licensed under the Open Government Licence v3.0. Data information used in this map was made available by the EMODnet Human Activities Project. www.emodnet-humanactivities.eu, funded by the European Commission Directorate General for Maritime Affairs and Fisheries. The data layers used for this work were EUSeaMap, © Natural England Copyright, Contains Ordnance Survey data © Crown Copyright and database right 2026. DEFRA-Intertidal Deposits

Issue	Date	Remarks	Drawn	Checked	Approved
1	19/03/2026	-	JDB	MDC	JDB

Title
 Figure 18-1
 Chapter 18: Intertidal and Subtidal Benthic Ecology
 Subtidal Seabed Sampling Stations, Seawater Sampling Stations and Broadscale Habitats within Study Area.
 EGL 5 EIA Preliminary Environmental Information Report
 Volume 3: Figures

nationalgrid

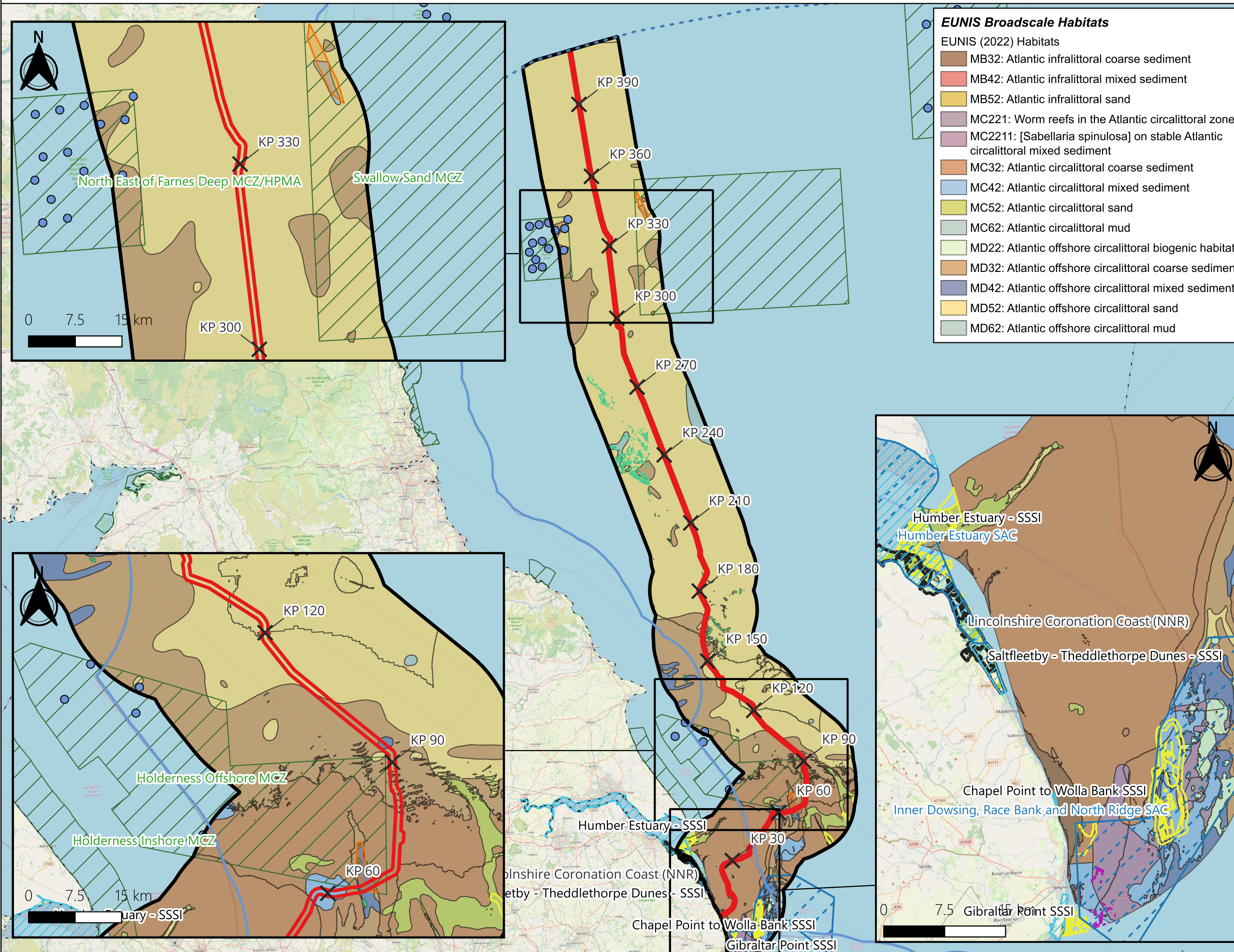
Figure Number: Figure 18-1

Drawing Reference: J0931-25-12-02_EGL5_001

Scale	Sheet Size	Sheet	Issue
1:1,500,000	A3	SHEET 1 OF 1	4



Figure 18-2
Chapter 18: Intertidal and Subtidal Benthic Ecology
Designated Sites with Benthic Features, Protected Species and Priority Features within the Benthic Study Area.



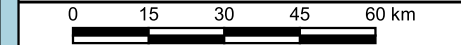
Legend

- draft Order Limits
- Study Area (19.8 km buffer either side of draft Order Limits)
- Indicative KP
- (X) (Labelled at 30 km intervals)
- Habitats / Species**
- Ocean Quahog [*A. islandica*]
- Tunnel Valleys
- Annex I Sandbanks
- Annex I reefs
- Bedrock and/or Stony
- Biogenic (i.e. [*S. spinulosa*])
- Designated Sites**
- Marine Conservation Zones / Highly Protected Marine Areas
- Special Areas of Conservation
- Sites of Special Scientific Interest
- National Nature Reserves
- EEZ
- Scottish Marine Border
- 12 NM Limit

Notes
This drawing is scaled at paper size A3, therefore any prints taken at smaller sizes will affect accuracy of the measurement units and should not be scaled against.



Coordinate System: ETRS89 / UTM zone 30N
Sheet X Centroid Coordinate: 682486E, Sheet Y Centroid Coordinate: 6087404N



Basemap: OpenStreetMap © OSM contributors, CC-BY-SA. UKHO Contains public sector information licensed under the Open Government Licence v3.0. Data information used in this map was made available by the EMODnet Human Activities Project.
www.emodnet-humanactivities.eu, funded by the European Commission Directorate General for Maritime Affairs and Fisheries. The data layers used for this work were EUSeaMap, © JNCC Copyright, © Natural England Copyright, Contains Ordnance Survey data © Crown Copyright and database right 2026, DEFRA-Intertidal Deposits

Issue	Date	Remarks	Drawn	Checked	Approved
1	26/03/2026	-	JDB	MDC	JDB

Title
Figure 18-2
Chapter 18: Intertidal and Subtidal Benthic Ecology
Designated Sites with Benthic Features, Protected Species and Priority Species within the Benthic Study Area
EGL 5 EIA Preliminary Environmental Information Report
Volume 3: Figures

nationalgrid

Figure Number
Figure 18-2

Drawing Reference
J0931-25-12-02_EGL5_002

Scale	Sheet Size	Sheet	Issue
1:1,500,000	A3	SHEET 1 OF 1	5