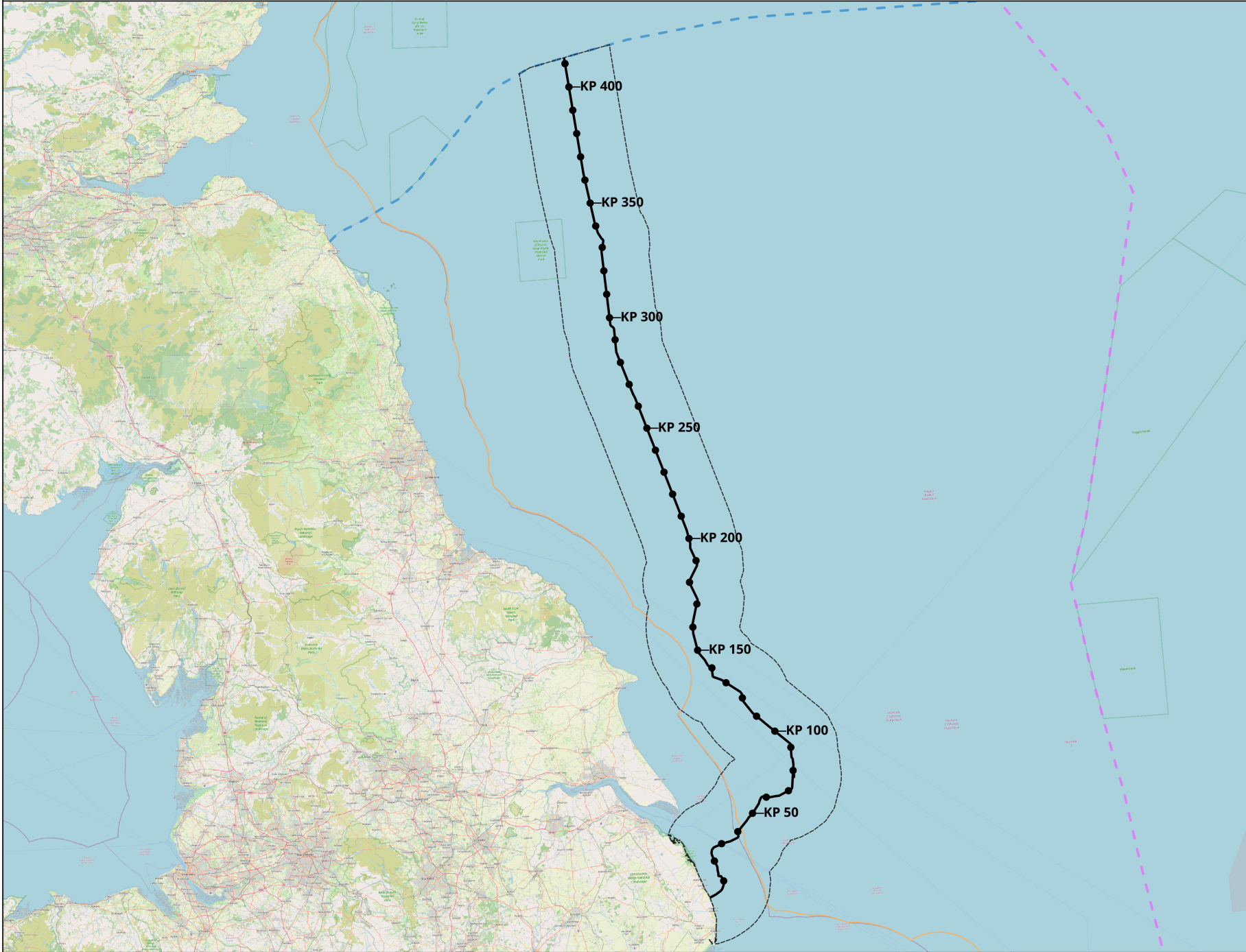




Figure 17-1
Chapter 17: Coastal and Marine Physical Processes
Study Area



- Legend**
- KP
 - English Offshore Scheme draft Order Limits
 - Coastal and Marine Physical Processes 19.8 km Study Area
 - - - Scottish Marine Border
 - 12 NM Limit
 - - - EEZ

Notes
This drawing is scaled at paper size A3, therefore any prints taken at smaller sizes will affect accuracy of the measurement units and should not be scaled against.



Coordinate System: ETRS89 / UTM zone 30N
Sheet X Centroid Coordinate: 697949E; Sheet Y Centroid Coordinate: 6085741N

Base map and data from OpenStreetMap and OpenStreetMap Foundation (CC-BY-SA). © <https://www.openstreetmap.org> and contributors. UKHO Contains public sector information licensed under the Open Government Licence v3.0.

1	07/04/2026	DRAFT	CC	RW	RW
---	------------	-------	----	----	----

Title
Chapter 17: Coastal and Marine Physical Processes Study Area
EGL 5 EIA Preliminary Environmental Information Report
Volume 3: Figures



Figure Number		Figure 17-1		
Drawing Reference		PU093_CC_EG5_Overview		
Scale	Sheet Size	Sheet	Issue	
1:1,650,000	A3	SHEET 1 OF 1	1	



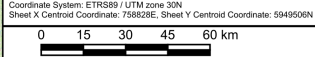
Figure 17-2
Chapter 17: Coastal and Marine Physical Processes
Bathymetry and Seabed Features



Legend

- KP
- █ English Offshore Scheme draft Order Limits
- Coastal and Marine Physical Processes 19.8 km Study Area
- EMODnet Bathymetry (2024)
- Depth (mLAT)
- > -15
- -20
- -30
- -40
- -70
- -80
- < -100
- Scottish Marine Border
- 12 NM Limit
- EEZ

Notes
This drawing is scaled at paper size A3, therefore any prints taken at smaller sizes will affect accuracy of the measurement units and should not be scaled against.



Coordinate System: ETRS89 / UTM zone 30N
Sheet X Centroid Coordinate: 758629E, Sheet Y Centroid Coordinate: 5949506N

1	07/04/2026	DRAFT	CC	RW	RW
Issue	Date	Remarks	Drawn	Checked	Approved

Title
Chapter 17: Coastal and Marine Physical Processes
Bathymetry and Seabed Features
EGL 5 EIA Preliminary Environmental Information Report
Volume 3: Figures



Figure Number: Figure 17-2

Drawing Reference: PU093_CC_EG5_Bathymetry

Scale	Sheet Size	Sheet	Issue
1:900,000	A3	SHEET 1 OF 1	1

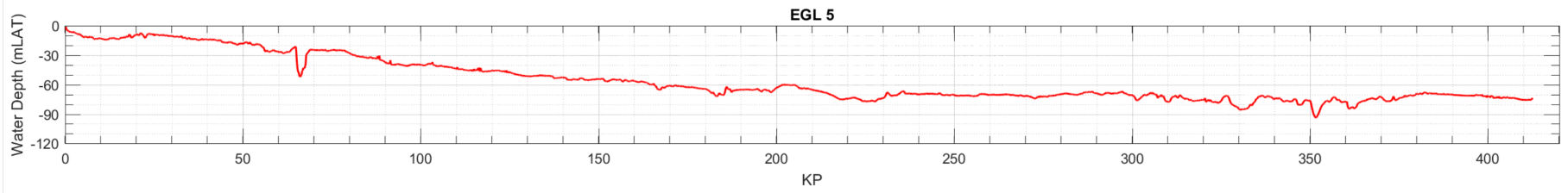
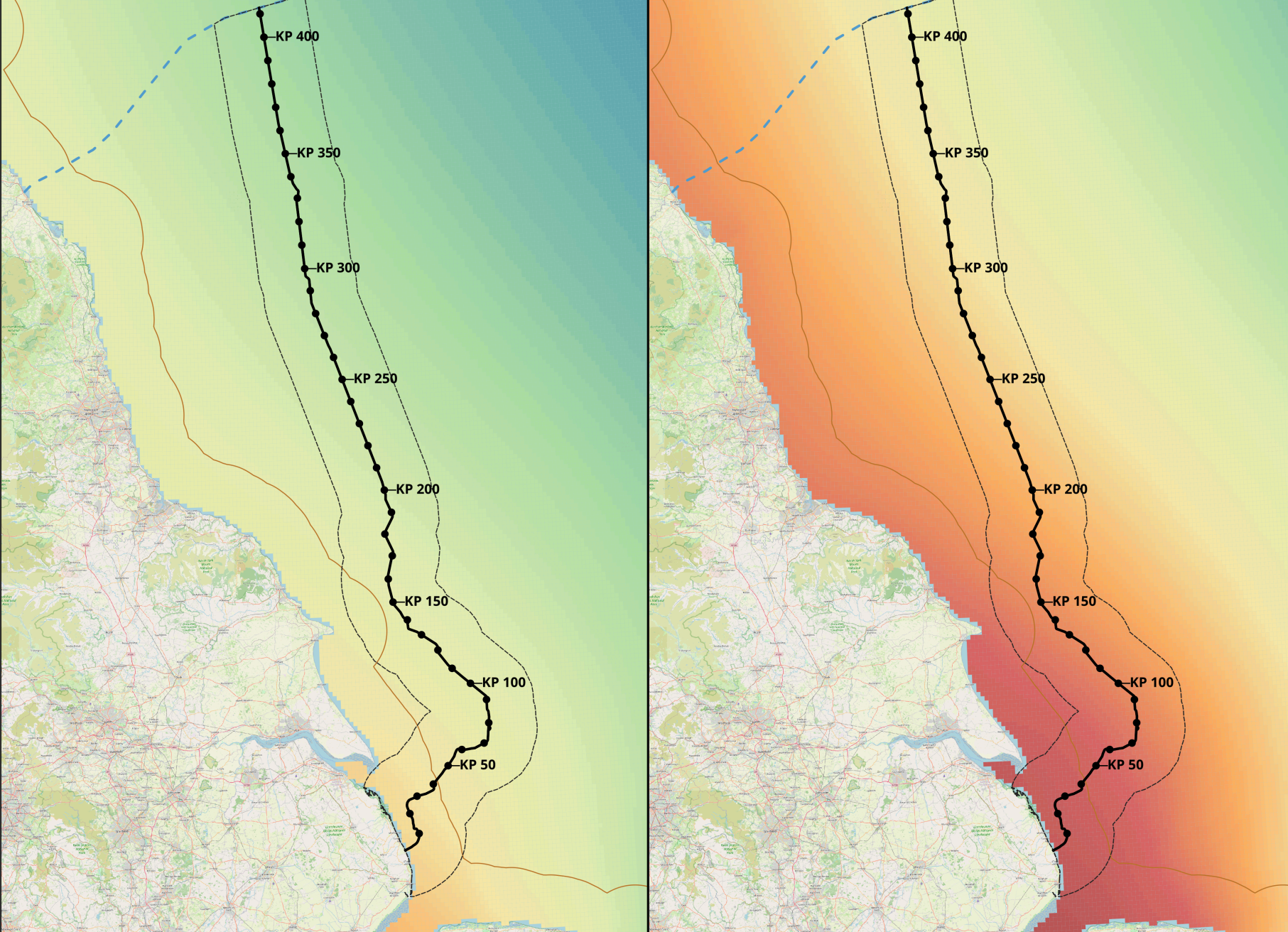




Figure 17-3
Chapter 17: Coastal and Marine Physical Processes
Tidal Range for Mean Spring and Neap Tides

Neap

Spring



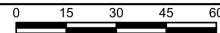
Legend

- KP
- English Offshore Scheme draft Order Limits
- Coastal and Marine Physical Processes 19.8 km Study Area
- Tidal Range (m) ABPmer (2017)
- 0
- 1
- 2
- 3
- 4
- 5
- 6
- 7
- Scottish Marine Border
- 12 NM Limit

Notes
This drawing is scaled at paper size A3, therefore any prints taken at smaller sizes will affect accuracy of the measurement units and should not be scaled against.



Coordinate System: ETRS89 / UTM zone 30N
Sheet X Centroid Coordinate: 687691E, Sheet Y Centroid Coordinate: 6080235N



Base map and data from OpenStreetMap and OpenStreetMap Foundation (CC-BY-SA). © https://www.openstreetmap.org and contributors. UKHO Contains public sector information licensed under the Open Government Licence v3.0.

1	07/04/2026	DRAFT	CC	RW	RW
Issue	Date	Remarks	Drawn	Checked	Approved

Title
Figure 17-3
Chapter 17: Coastal and Marine Physical Processes
Tidal Range for Mean Spring and Neap Tides
EGL 5 EIA Preliminary Environmental Information Report
Volume 3: Figures



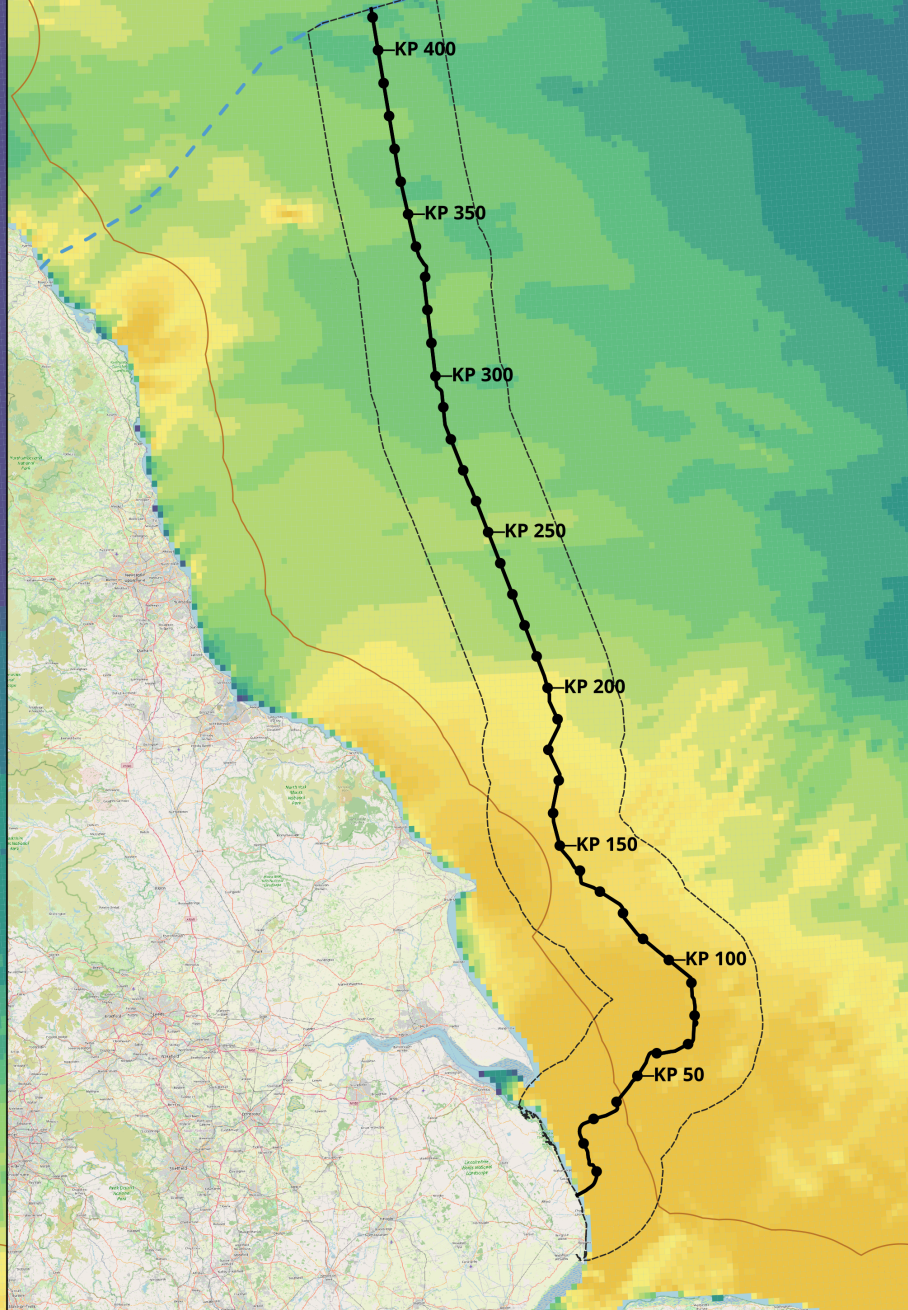
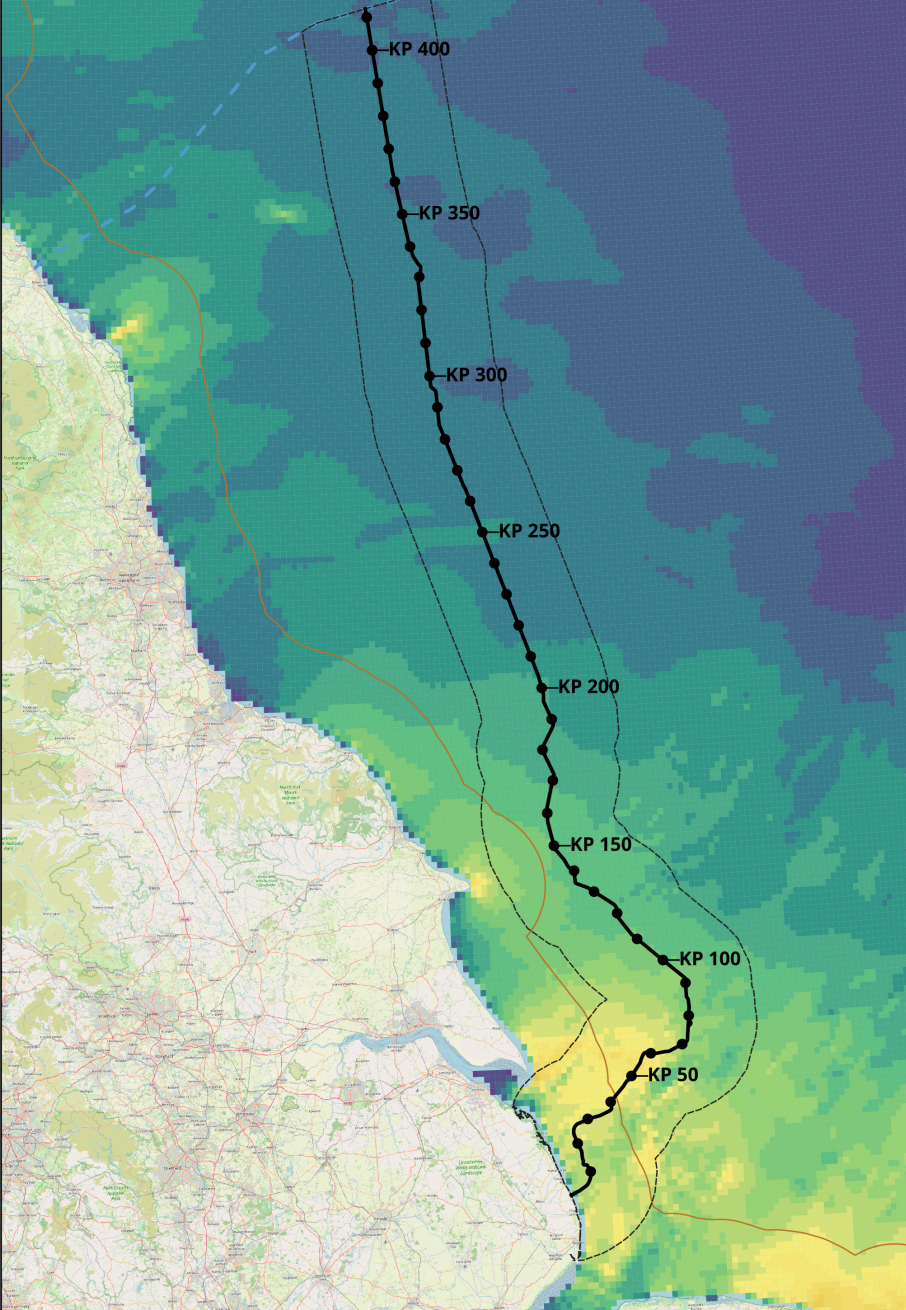
Figure Number		Figure 17-3		
Drawing Reference				
PU093_CC_EG5_Tidal_Range				
Scale	Sheet Size	Sheet	Issue	
1:1,600,000	A3	SHEET 1 OF 1	1	



Figure 17-4
Chapter 17: Coastal and Marine Physical Processes
Mean Spring and Neap Peak Tidal Flows

Neap

Spring



Legend

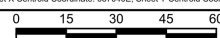
- KP
 - English Offshore Scheme draft Order Limits
 - Coastal and Marine Physical Processes 19.8 km Study Area
- Peak Flow (m/s) (ABPmer, 2017)
- 0
 - 0.1
 - 0.2
 - 0.3
 - 0.4
 - 0.5
 - 0.6
 - >0.7
- Scottish Marine Border
 - 12 NM Limit

Notes

This drawing is scaled at paper size A3, therefore any prints taken at smaller sizes will affect accuracy of the measurement units and should not be scaled against.



Coordinate System: ETRS89 / UTM zone 30N
Sheet X Centroid Coordinate: 687691E; Sheet Y Centroid Coordinate: 6080235N



Base map and data from OpenStreetMap and OpenStreetMap Foundation (CC-BY-SA). © https://www.openstreetmap.org and contributors. UKHO Contains public sector information licensed under the Open Government Licence v3.0.

1	07/04/2026	DRAFT	CC	RW	RW
---	------------	-------	----	----	----

Title

Figure 17-4
Chapter 17: Coastal and Marine Physical Processes
Mean Spring and Neap Peak Tidal Flows
EGL 5 EIA Preliminary Environmental Information Report
Volume 3: Figures



Figure Number: Figure 17-4

Drawing Reference: PU093_CC_EG5_SpNp_Flows

Scale: 1:1,600,000	Sheet Size: A3	Sheet: SHEET 1 OF 1	Issue: 1
--------------------	----------------	---------------------	----------

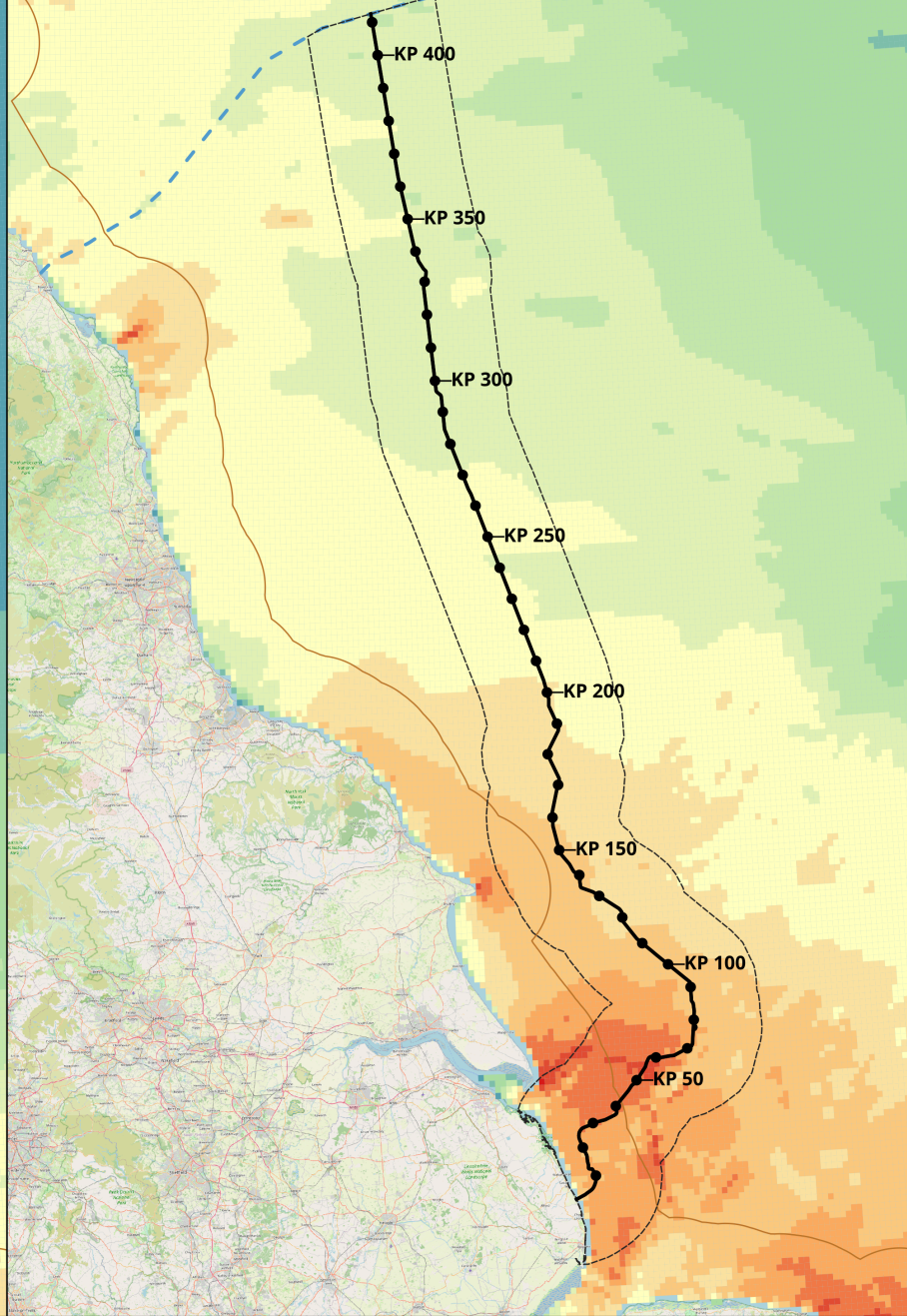


Figure 17-5
Chapter 17: Coastal and Marine Physical Processes
Tidal Excursions for Mean Spring and Neap Tides

Neap



Spring



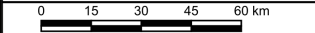
Legend

- KP
- English Offshore Scheme draft Order Limits
- Coastal and Marine Physical Processes 19.8 km Study Area
- Tidal Excursions (km) (ABPmer, 2017)
- 0 - 1
- 1 - 2
- 2 - 3
- 3 - 4
- 4 - 5
- 5 - 6
- 6 - 8
- 8 - 10
- 10 - 12.5
- 12.5 - 15
- 15 - 17.5
- 17.5 - 20
- 20 - 60
- Scottish Marine Border
- 12 NM Limit

Notes
This drawing is scaled at paper size A3, therefore any prints taken at smaller sizes will affect accuracy of the measurement units and should not be scaled against.



Coordinate System: ETRS89 / UTM zone 30N
Sheet X Centroid Coordinate: 687695E, Sheet Y Centroid Coordinate: 6080235N



Base map and data from OpenStreetMap and OpenStreetMap Foundation (CC-BY-SA). © <https://www.openstreetmap.org> and contributors. UKHO Contains public sector information licensed under the Open Government Licence v3.0.

1	07/04/2026	DRAFT	CC	RW	RW
Issue	Date	Remarks	Drawn	Checked	Approved

Title
Chapter 17: Coastal and Marine Physical Processes
Tidal Excursions for Mean Spring and Neap Tides
EGL 5 EIA Preliminary Environmental Information Report
Volume 3: Figures



Figure Number: Figure 17-5

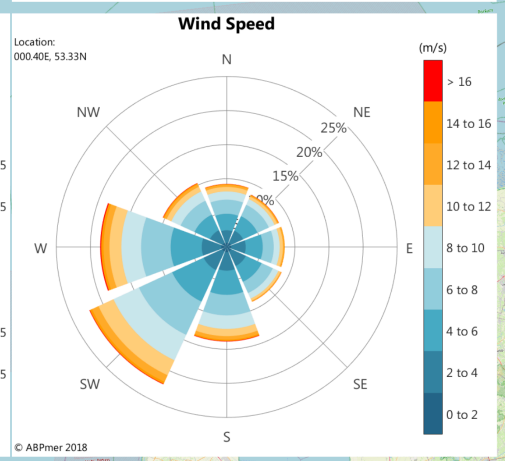
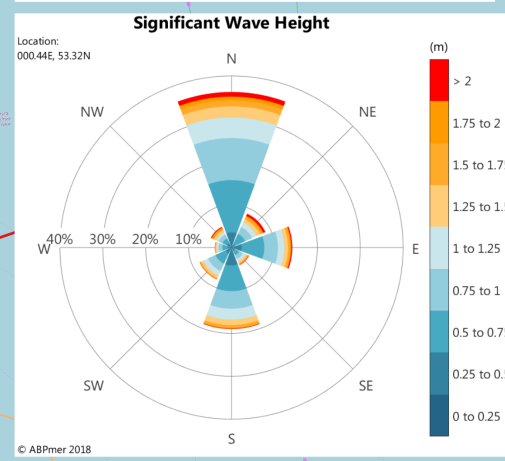
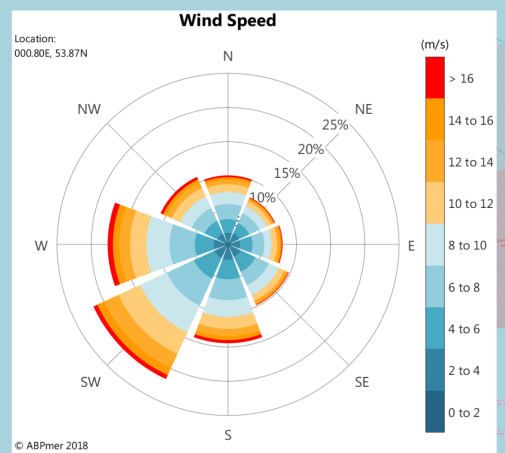
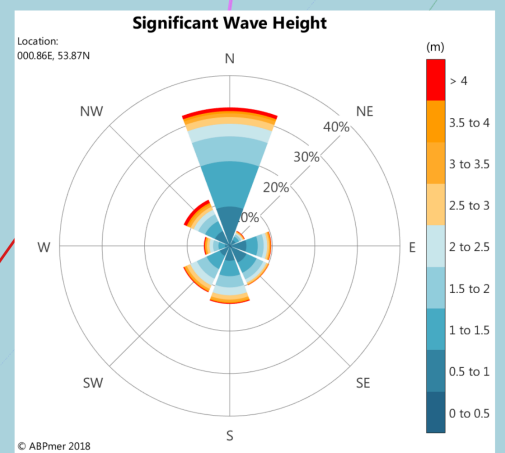
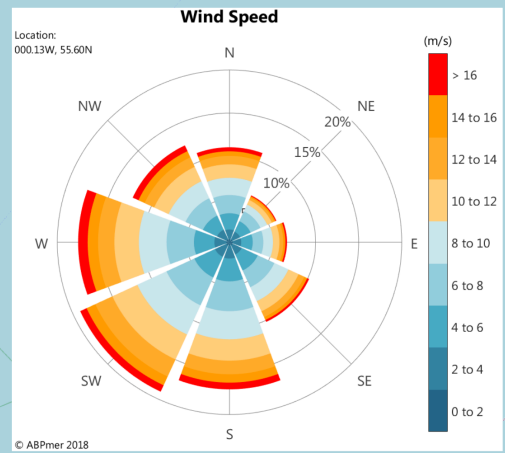
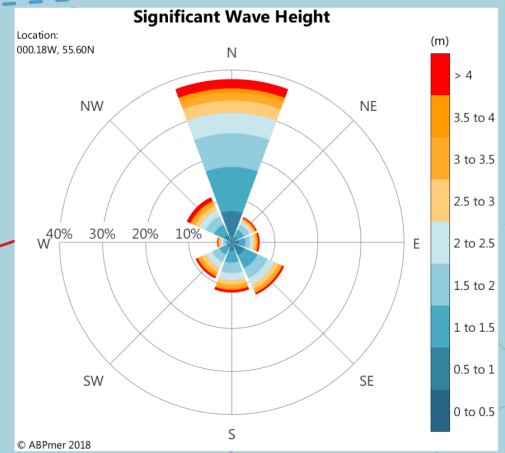
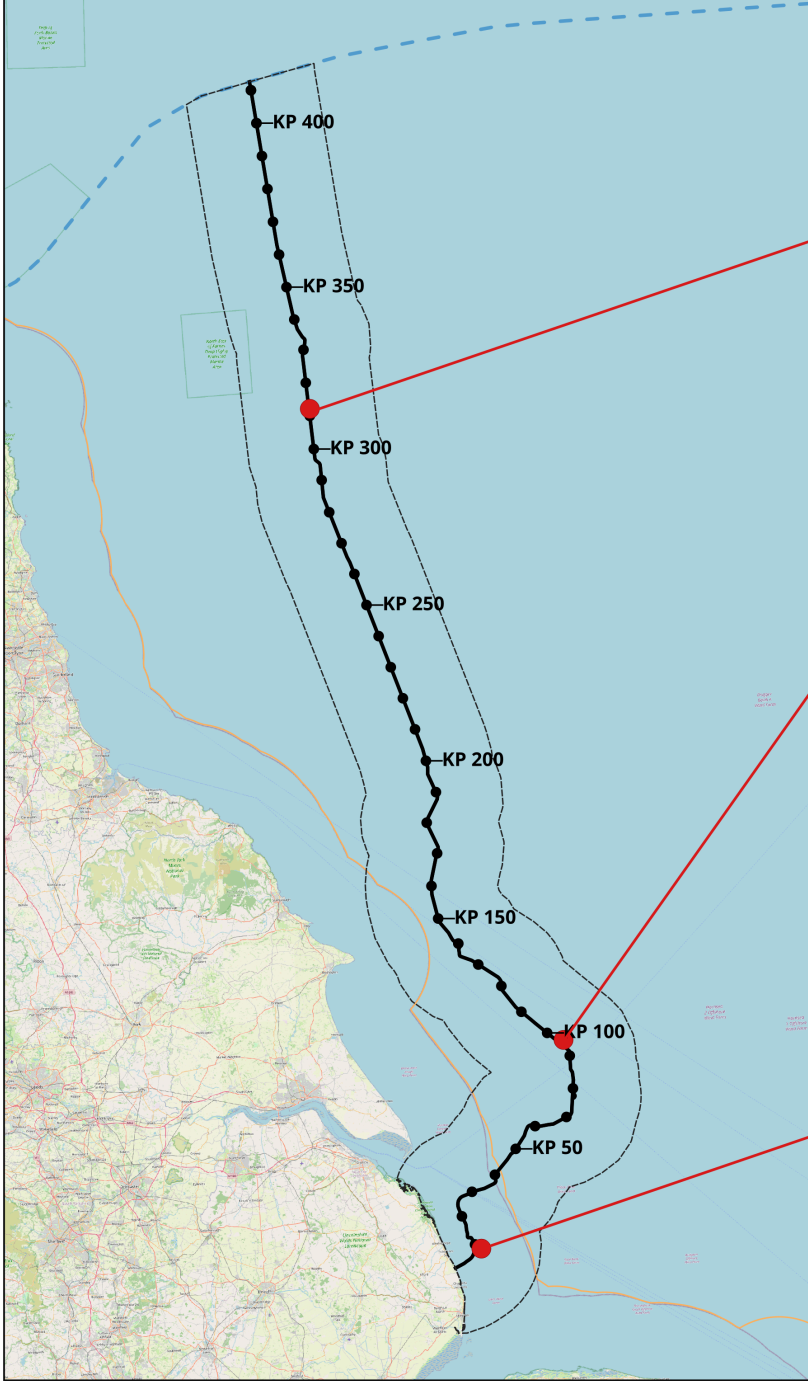
Drawing Reference: PUJ093_CC_EGS_Tidal_Excursion

Scale	Sheet Size	Sheet	Issue
1:1,600,000	A3	SHEET 1 OF 1	1



Figure 17-6
Chapter 17: Coastal and Marine Physical Processes
Wind and Wave Roses (ABPmer, 2018)

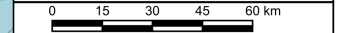
- Legend**
- KP
 - English Offshore Scheme draft Order Limits
 - Coastal and Marine Physical Processes 19.8 km Study Area
 - Scottish Marine Border
 - 12 NM Limit



Notes
This drawing is scaled at paper size A3, therefore any prints taken at smaller sizes will affect accuracy of the measurement units and should not be scaled against.



Coordinate System: ETRS89 / UTM zone 30N
Sheet X Centroid Coordinate: 859551E, Sheet Y Centroid Coordinate: 6081333N



Base map and data from OpenStreetMap and OpenStreetMap Foundation (CC-BY-SA). © https://www.openstreetmap.org and contributors. UKHO Contains public sector information licensed under the Open Government Licence v3.0.

1	07/04/2028	DRAFT	CC	RW	RW
Issue	Date	Remarks	Drawn	Checked	Approved

Figure 17-6
Chapter 17: Coastal and Marine Physical Processes
Wind and Wave Roses
EGL 5 EIA Preliminary Environmental Information Report
Volume 3: Figures

nationalgrid

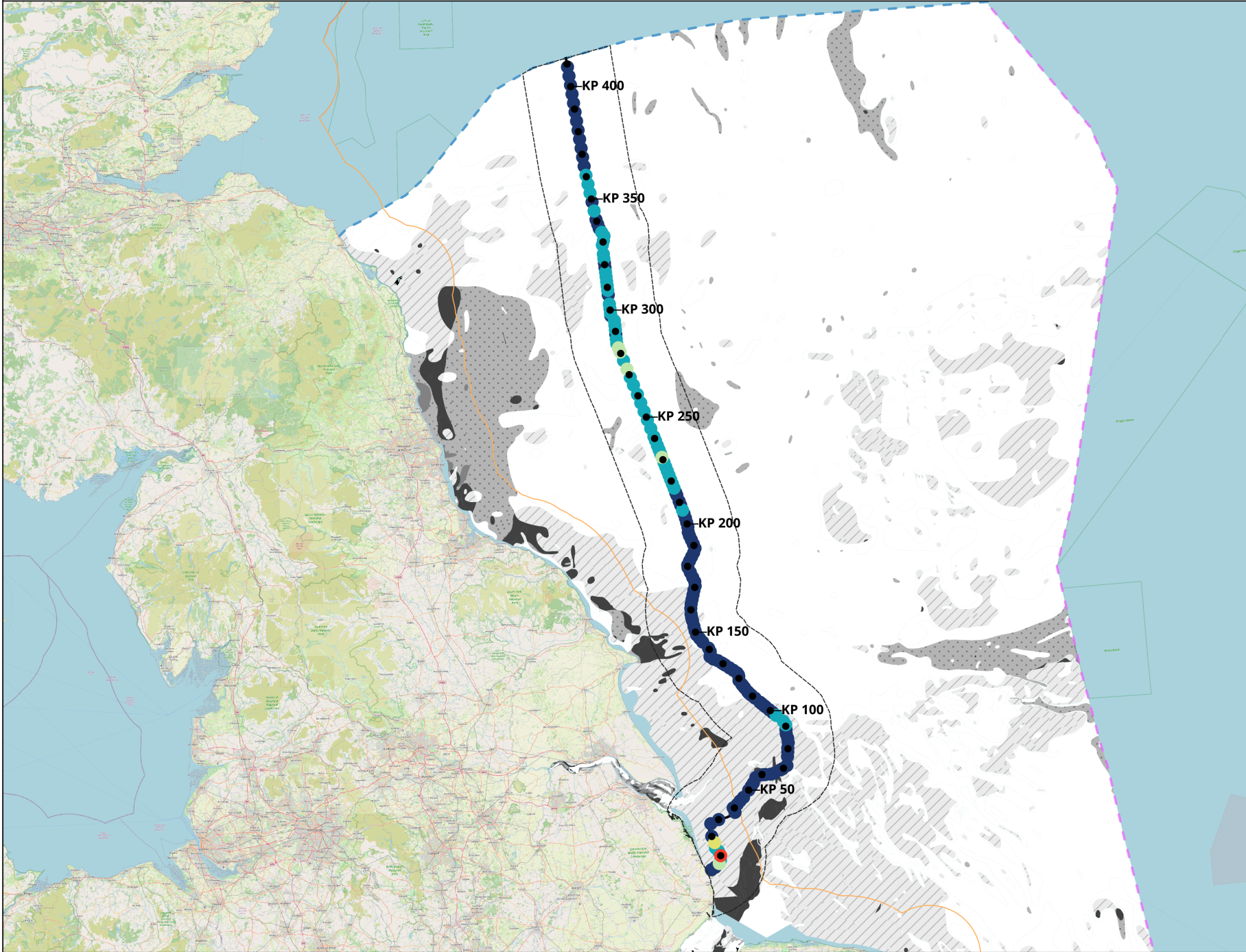
Figure Number: Figure 17-6

Drawing Reference: PU093_CC_EGS_WindWaveroses

Scale	Sheet Size	Sheet	Issue
1:1,600,000	A3	SHEET 1 OF 1	1



Figure 17-7
 Chapter 17: Coastal and Marine Physical Processes
 Seabed Sediments and Percentage of Fines from Particle Size Analysis (PSA)



Legend

- KP
- English Offshore Scheme draft Order Limits
- Coastal and Marine Physical Processes 19.8 km Study Area

Seabed Sediment Classification (EMODnet, 2022)

- Sand
- Coarse-grained sediment
- Muddy sand
- Sandy mud
- Mixed sediment
- Rock & boulders
- Mud

% of Fines from PSA

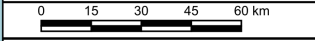
- 0 - 10
- 10 - 20
- 20 - 30
- 30 - 40
- 40 - 50
- 50 - 60
- 60 - 70
- 70 - 80
- 80 - 90
- 90 - 100

- Scottish Marine Border
- 12 NM Limit
- EEZ

Notes
 This drawing is scaled at paper size A3, therefore any prints taken at smaller sizes will affect accuracy of the measurement units and should not be scaled against.



Coordinate System: ETRS89 / UTM zone 30N
 Sheet X Centroid Coordinate: 687949E, Sheet Y Centroid Coordinate: 6080235N



Base map and data from OpenStreetMap and OpenStreetMap Foundation (CC-BY-SA). © https://www.openstreetmap.org and contributors. UKHO Contains public sector information licensed under the Open Government Licence v3.0.

1	07/04/2026	DRAFT	CC	RW	RW
Issue	Date	Remarks	Drawn	Checked	Approved

Title
 Chapter 17: Coastal and Marine Physical Processes
 Seabed Sediments and Percentage of Fines from PSA
 EGL 5 EIA Preliminary Environmental Information Report
 Volume 3: Figures



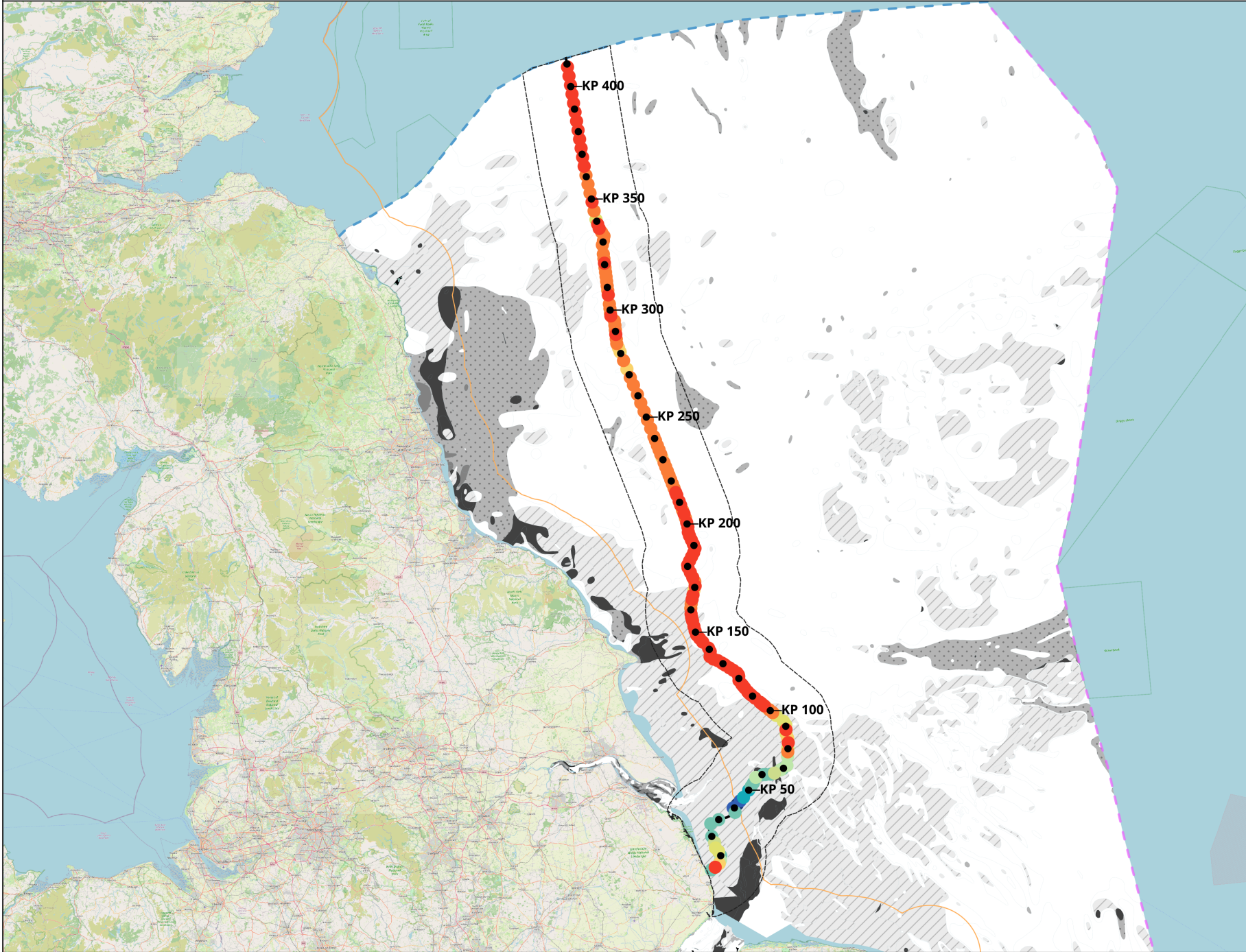
Figure Number
 Figure 17-7

Drawing Reference
 PU093_CC_EG5_PSA_fines

Scale	Sheet Size	Sheet	Issue
1:1,600,000	A3	SHEET 1 OF 1	1



Figure 17-8
 Chapter 17: Coastal and Marine Physical Processes
 Seabed Sediments and Percentage of Sands from Particle Size Analysis (PSA)



Legend

- KP
- English Offshore Scheme draft Order Limits
- Coastal and Marine Physical Processes 19.8 km Study Area

Seabed Sediment Classification (EMODnet, 2022)

- Sand
- Coarse-grained sediment
- Muddy sand
- Sandy mud
- Mixed sediment
- Rock & boulders
- Mud

% of Sands from PSA

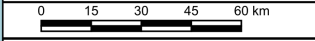
- 0 - 10
- 10 - 20
- 20 - 30
- 30 - 40
- 40 - 50
- 50 - 60
- 60 - 70
- 70 - 80
- 80 - 90
- 90 - 100

- Scottish Marine Border
- 12 NM Limit
- EEZ

Notes
 This drawing is scaled at paper size A3, therefore any prints taken at smaller sizes will affect accuracy of the measurement units and should not be scaled against.



Coordinate System: ETRS89 / UTM zone 30N
 Sheet X Centroid Coordinate: 687946E, Sheet Y Centroid Coordinate: 6080235N



Base map and data from OpenStreetMap and OpenStreetMap Foundation (CC-BY-SA). © https://www.openstreetmap.org and contributors. UKHO Contains public sector information licensed under the Open Government Licence v3.0.

1	07/04/2026	DRAFT	CC	RW	RW
Issue	Date	Remarks	Drawn	Checked	Approved

Title
 Chapter 17: Coastal and Marine Physical Processes
 Seabed Sediments and Percentage of Sands from PSA
 EGL 5 EIA Preliminary Environmental Information Report
 Volume 3: Figures



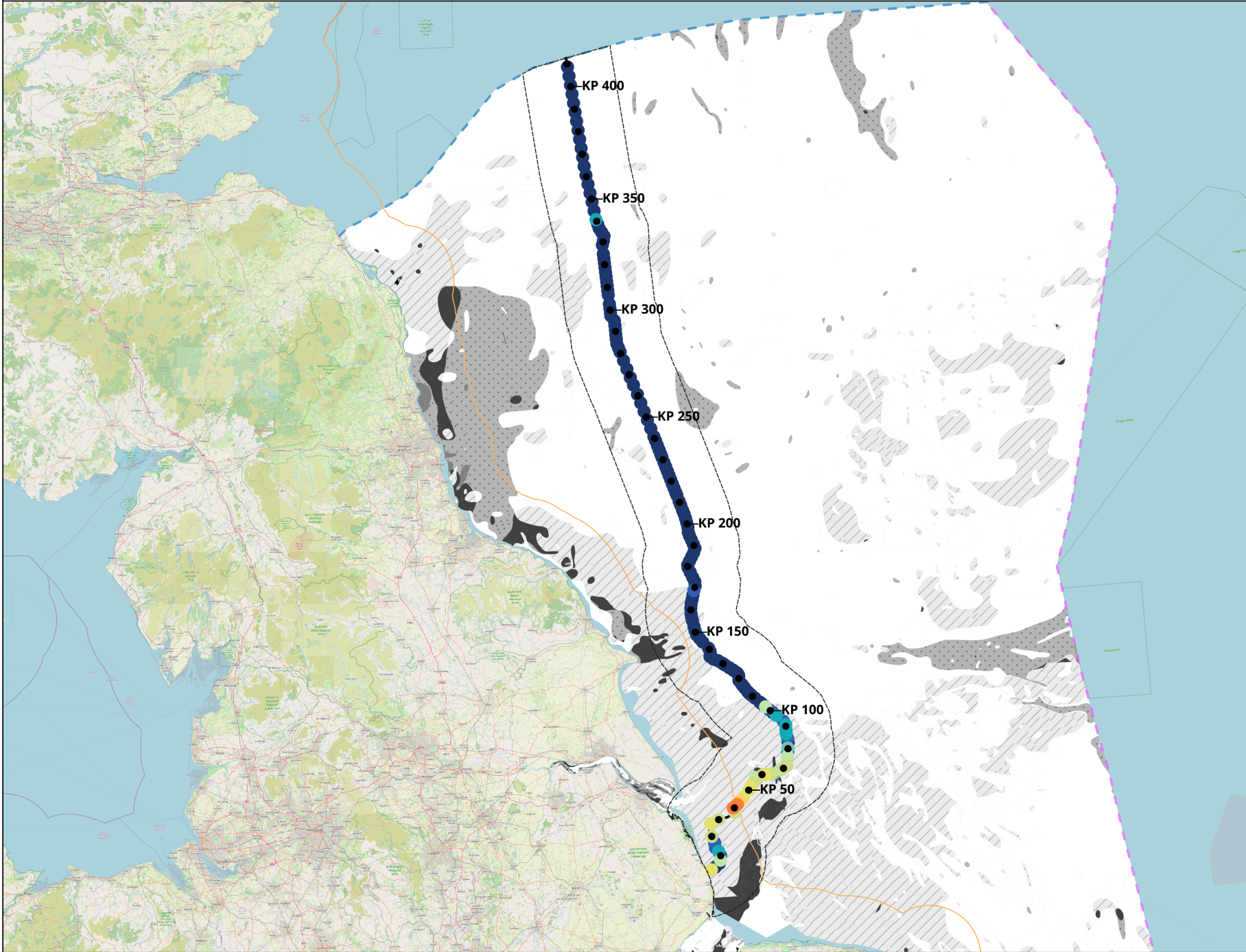
Figure Number
 Figure 17-8

Drawing Reference
 PU093_CC_EG5_PSA_fines

Scale	Sheet Size	Sheet	Issue
1:1,600,000	A3	SHEET 1 OF 1	1



Figure 17-9
 Chapter 17: Coastal and Marine Physical Processes
 Seabed Sediments and Percentage of Gravels from Particle Size Analysis (PSA)



Legend

- KP
- English Offshore Scheme draft Order Limits
- Coastal and Marine Physical Processes 19.8 km Study Area

Seabed Sediment Classification (EMODnet, 2022)

- Sand
- ▨ Coarse-grained sediment
- ▩ Muddy sand
- ▧ Sandy mud
- ▦ Mixed sediment
- ▤ Rock & boulders
- ▣ Mud

% of Gravels from PSA

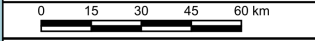
- 0 - 10
- 10 - 20
- 20 - 30
- 30 - 40
- 40 - 50
- 50 - 60
- 60 - 70
- 70 - 80
- 80 - 90
- 90 - 100

- Scottish Marine Border
- 12 NM Limit
- EEZ

Notes
 This drawing is scaled at paper size A3, therefore any prints taken at smaller sizes will affect accuracy of the measurement units and should not be scaled against.



Coordinate System: ETRS89 / UTM zone 30N
 Sheet X Centroid Coordinate: 687946E, Sheet Y Centroid Coordinate: 6080235N



Base map and data from OpenStreetMap and OpenStreetMap Foundation (CC-BY-SA). © https://www.openstreetmap.org and contributors. UKHO Contains public sector information licensed under the Open Government Licence v3.0.

1	07/04/2026	DRAFT	CC	RW	RW
Issue	Date	Remarks	Drawn	Checked	Approved

Title
 Chapter 17: Coastal and Marine Physical Processes
 Seabed Sediments and Percentage of Gravels from PSA
 EGL 5 EIA Preliminary Environmental Information Report
 Volume 3: Figures



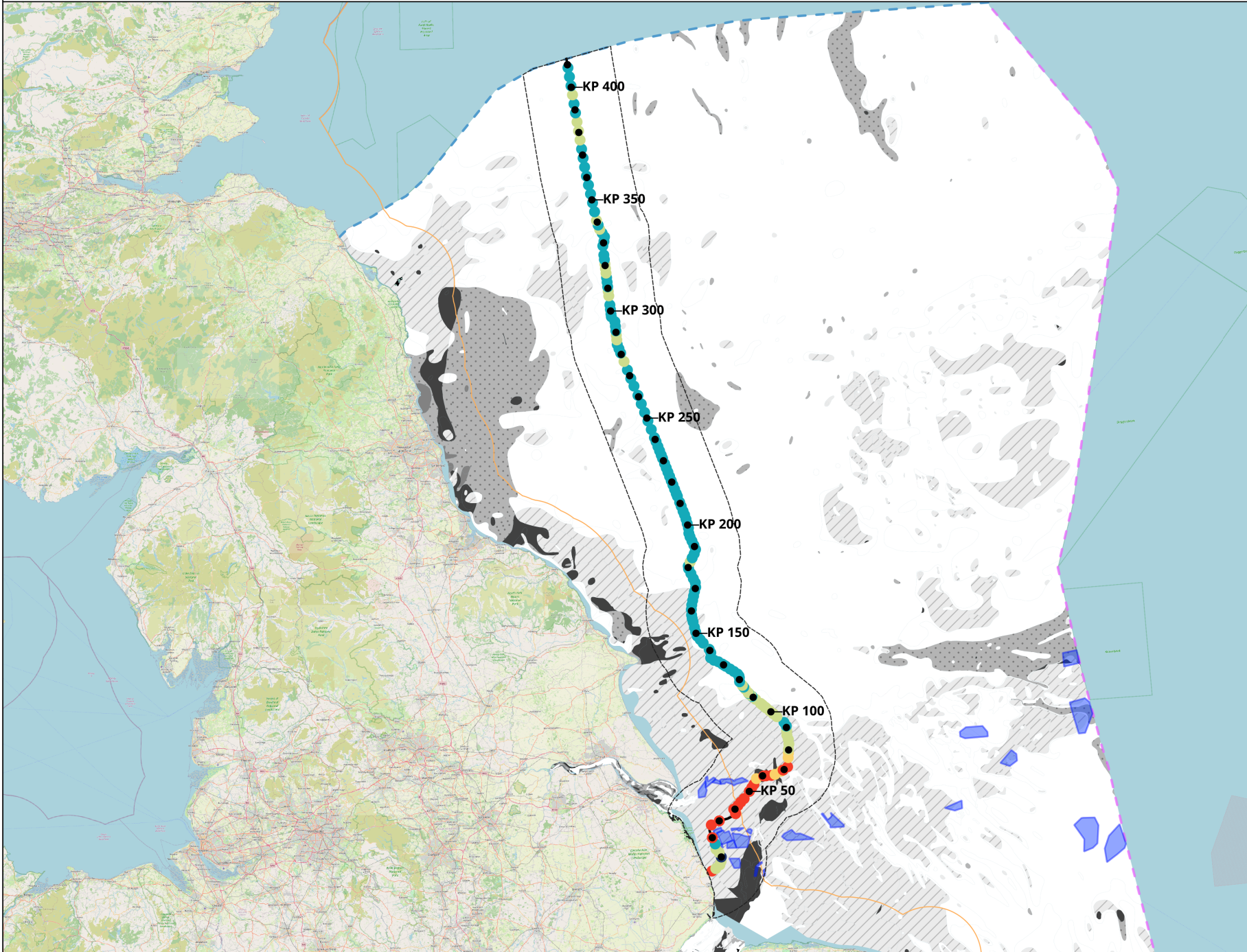
Figure Number
 Figure 17-9

Drawing Reference
 PU093_CC_EG5_PSA_fines

Scale	Sheet Size	Sheet	Issue
1:1,600,000	A3	SHEET 1 OF 1	1



Figure 17-10
Chapter 17: Coastal and Marine Physical Processes
Seabed Sediments and Median (d50) Grain Size



Legend

- KP
- English Offshore Scheme draft Order Limits
- Coastal and Marine Physical Processes 19.8 km Study Area
- Marine Aggregate Site

d50 Grain Size

Wentworth Classification

- Silt
- Very Fine / Fine Sand
- Medium / Coarse Sand
- Very Coarse Sand
- Gravel

Seabed Sediment Classification (EMODnet, 2022)

Sand

- ▨ Coarse-grained sediment
- ▨ Muddy sand
- ▨ Sandy mud
- ▨ Mixed sediment
- ▨ Rock & boulders
- ▨ Mud

- Scottish Marine Border
- 12 NM Limit
- EEZ

Notes
This drawing is scaled at paper size A3, therefore any prints taken at smaller sizes will affect accuracy of the measurement units and should not be scaled against.



Coordinate System: ETRS89 / UTM zone 30N
Sheet X Centroid Coordinate: 687691E, Sheet Y Centroid Coordinate: 6080235N

0 15 30 45 60 km

Base map and data from OpenStreetMap and OpenStreetMap Foundation (CC-BY-SA). © <https://www.openstreetmap.org> and contributors. UKHO Contains public sector information licensed under the Open Government Licence v3.0.

1	07/04/2026	DRAFT	CC	RW	RW
Issue	Date	Remarks	Drawn	Checked	Approved

Title
Figure 17-10
Chapter 17: Coastal and Marine Physical Processes
Seabed Sediments and Median (d50) Grain Size
EGL 5 EIA Preliminary Environmental Information Report
Volume 3: Figures

nationalgrid

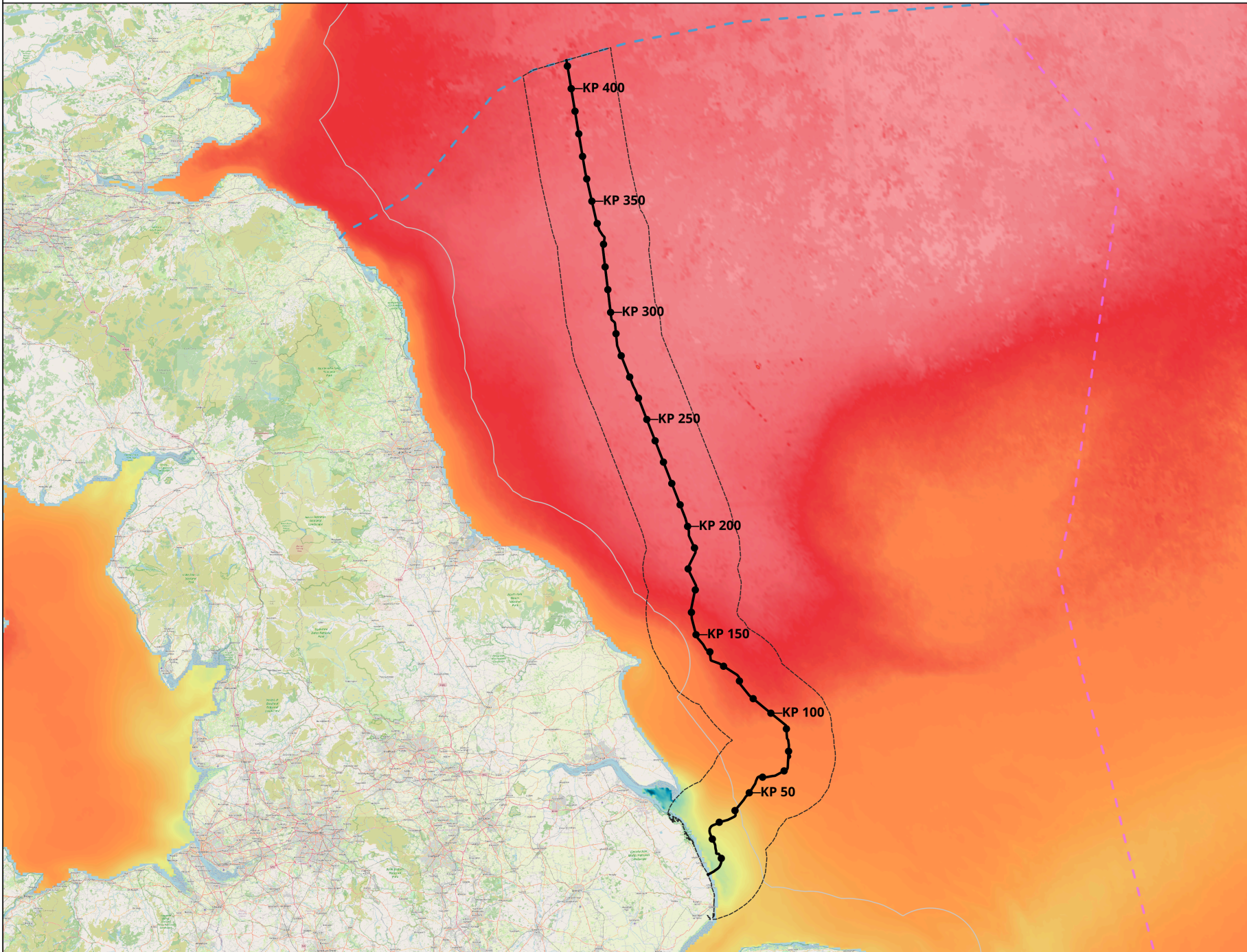
Figure Number: Figure 17-10

Drawing Reference: PU093_CC_EGS_d50

Scale	Sheet Size	Sheet	Issue
1:1,600,000	A3	SHEET 1 OF 1	1



Figure 17-11
Chapter 17: Coastal and Marine Physical Processes
Annual Mean Suspended Sediment
Concentration



Legend

- KP
- English Offshore Scheme draft Order Limits
- Coastal and Marine Physical Processes 19.8 km Study Area

SSC Monthly Mean Cefas 2016 (mg/l)

0
1
2
5
10
20
30
40
50
>=60

- Scottish Marine Border
- 12 NM Limit
- EEZ

Notes
This drawing is scaled at paper size A3, therefore any prints taken at smaller sizes will affect accuracy of the measurement units and should not be scaled against.



Coordinate System: ETRS89 / UTM zone 30N
Sheet X Centroid Coordinate: 687690E, Sheet Y Centroid Coordinate: 6080235N

0 15 30 45 60 km

Base map and data from OpenStreetMap and OpenStreetMap Foundation (CC-BY-SA). © <https://www.openstreetmap.org> and contributors. UKHO Contains public sector information licensed under the Open Government Licence v3.0.

1	07/04/2020	DRAFT	CC	RW	RW
Issue	Date	Remarks	Drawn	Checked	Approved

Title
Chapter 17: Coastal and Marine Physical Processes
Annual Mean Suspended Sediment Concentration
EGL 5 EIA Preliminary Environmental Information Report
Volume 3: Figures

nationalgrid

Figure Number: Figure 17-11

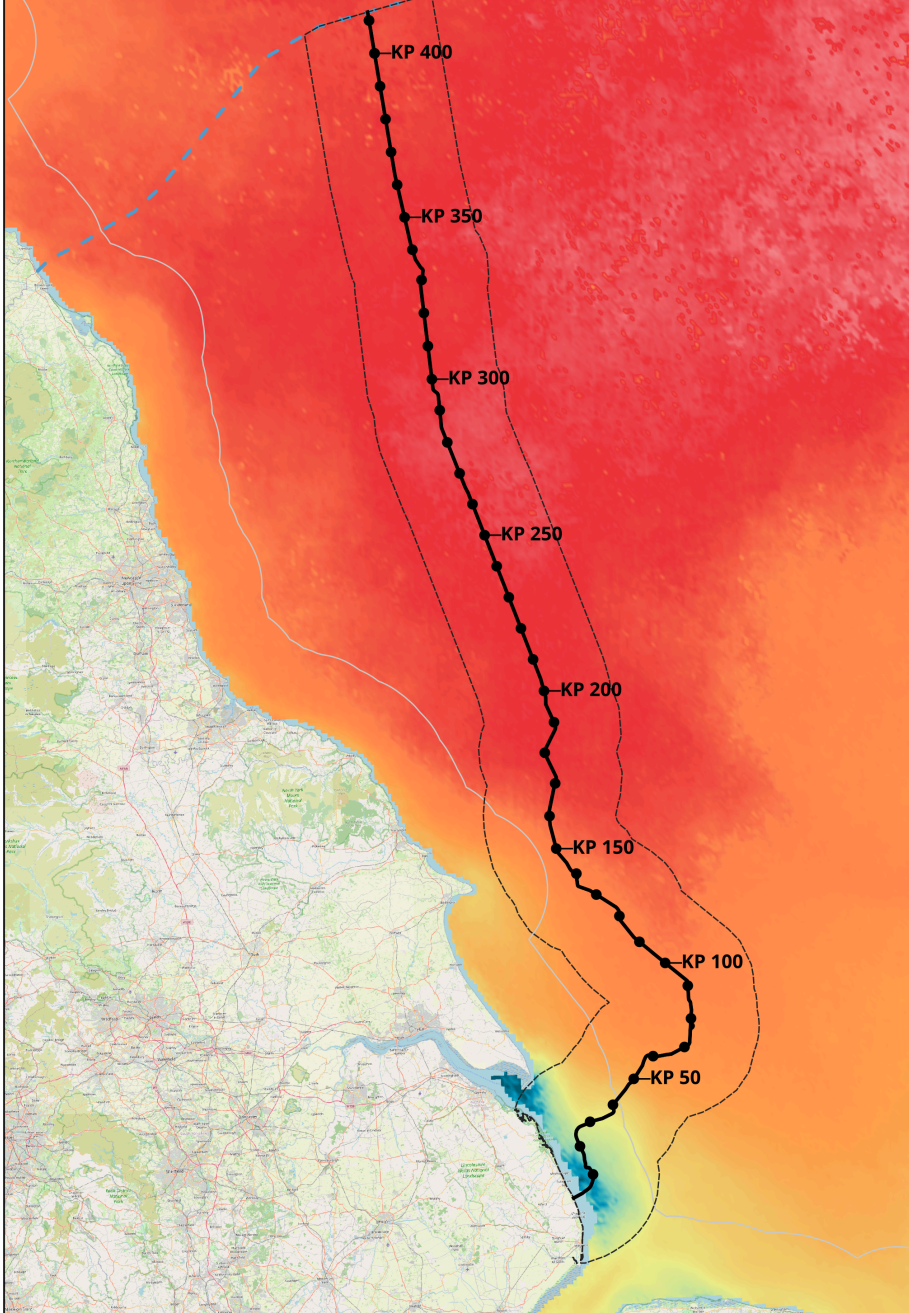
Drawing Reference: PU093_CC_EG5_Annual_SPM

Scale	Sheet Size	Sheet	Issue
1:1,600,000	A3	SHEET 1 OF 1	1

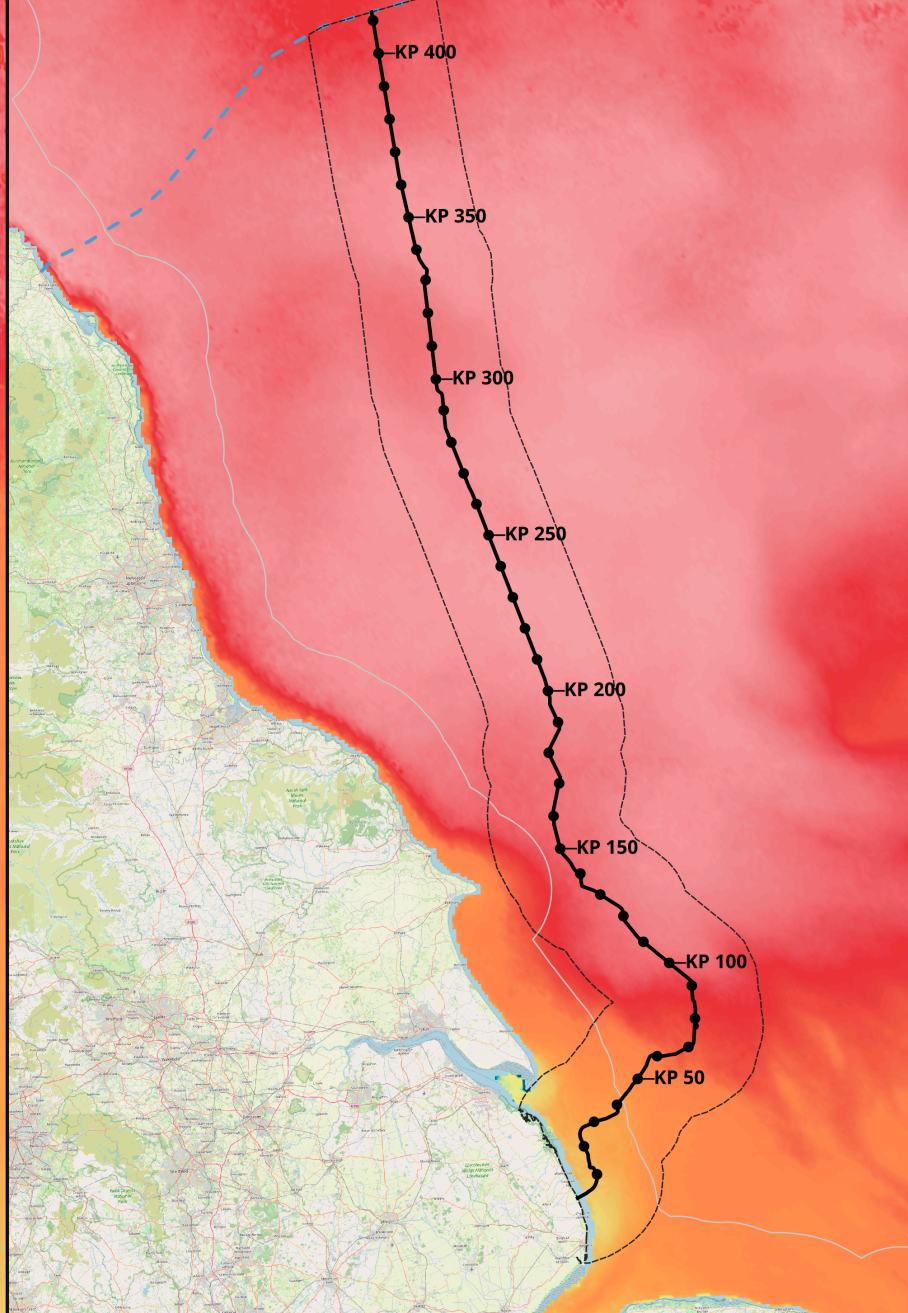


Figure 17-12
Chapter 17: Coastal and Marine Physical Processes
Seasonal Mean Suspended Sediment Concentration

January



June



Legend

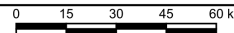
- KP
- English Offshore Scheme draft Order Limits
- Coastal and Marine Physical Processes 19.8 km Study Area
- SSC Monthly Mean Cefas 2016 (mg/l)
- 0
- 1
- 2
- 5
- 10
- 20
- 30
- 40
- 50
- >=60
- Scottish Marine Border
- 12 NM Limit

Notes

This drawing is scaled at paper size A3, therefore any prints taken at smaller sizes will affect accuracy of the measurement units and should not be scaled against.



Coordinate System: ETRS89 / UTM zone 30N
Sheet X Centroid Coordinate: 687691E, Sheet Y Centroid Coordinate: 6080235N



Base map and data from OpenStreetMap and OpenStreetMap Foundation (CC-BY-SA). © https://www.openstreetmap.org and contributors. UKHO Contains public sector information licensed under the Open Government Licence v3.0.

1	07/04/2026	DRAFT	CC	RW	RW
Issue	Date	Remarks	Drawn	Checked	Approved

Title
Figure 17-12
Chapter 17: Coastal and Marine Physical Processes
Seasonal Mean Suspended Sediment Concentration
EGL 5 EIA Preliminary Environmental Information Report
Volume 3: Figures

nationalgrid

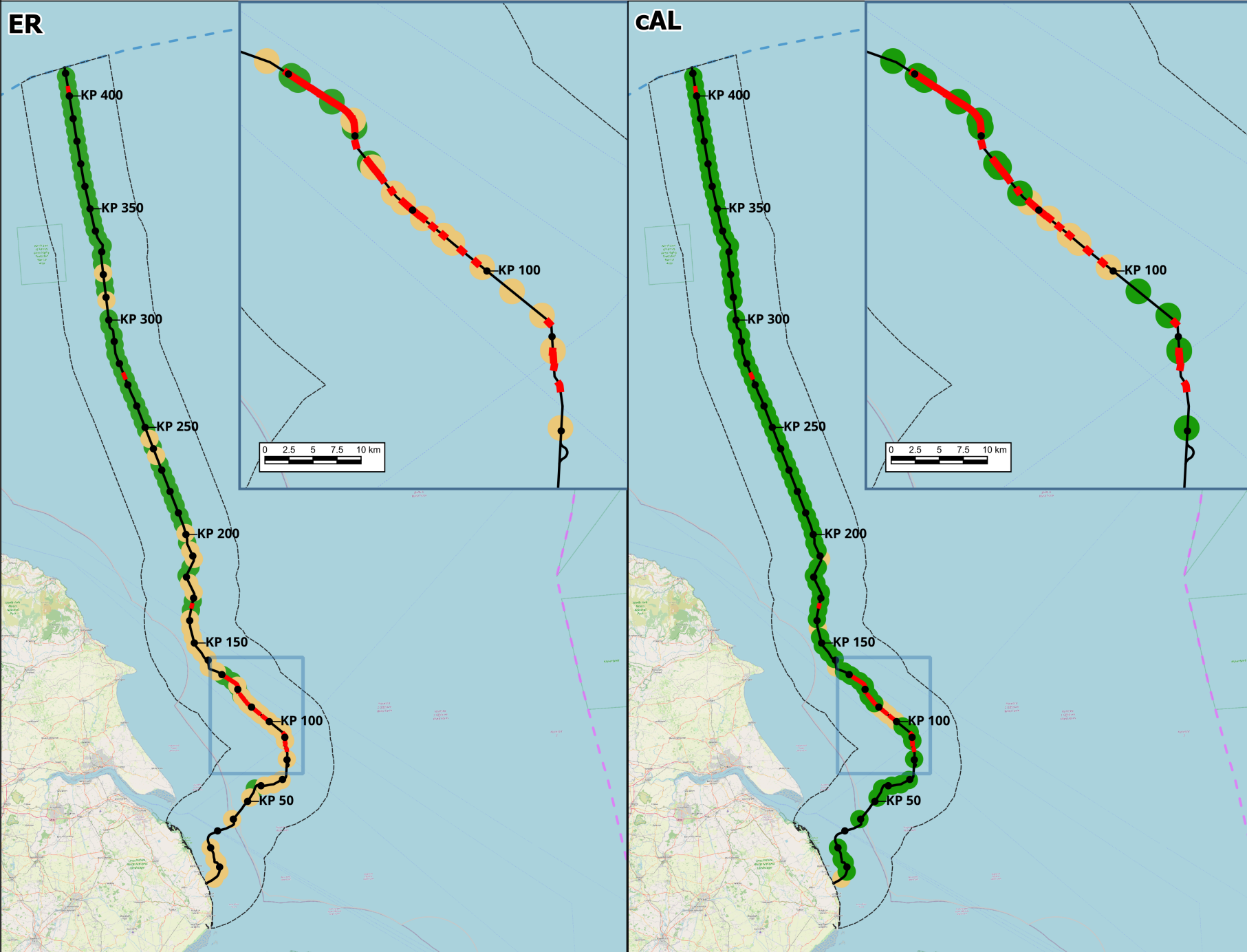
Figure Number: Figure 17-12

Drawing Reference: PU093_CC_EGS_Seasonal_SPM

Scale	Sheet Size	Sheet	Issue
1:1,600,000	A3	SHEET 1 OF 1	1



Figure 17-13
Chapter 17: Coastal and Marine Physical Processes
Arsenic Concentrations - NOAA Effect Range and Cefas Action Levels



Legend

- KP
- English Offshore Scheme draft Order Limits
- Coastal and Marine Physical Processes 19.8 km Study Area
- Sandwaves

NOAA Effect Range (ppm):

- Below ER
- ERL
- ERM

Cefas Action Level (ppm):

- Below cAL1
- cAL1
- cAL2

- Scottish Marine Border
- 12 NM Limit
- EEZ

Notes
This drawing is scaled at paper size A3, therefore any prints taken at smaller sizes will affect accuracy of the measurement units and should not be scaled against.



Coordinate System: ETRS89 / UTM zone 30N
Sheet X Centroid Coordinate: 789242E; Sheet Y Centroid Coordinate: 6084177N

0 15 30 45 60 km

Base map and data from OpenStreetMap and OpenStreetMap Foundation (CC-BY-SA). © https://www.openstreetmap.org and contributors. UKHO Contains public sector information licensed under the Open Government Licence v3.0.

1	07/04/2026	DRAFT	CC	RW	RW
Issue	Date	Remarks	Drawn	Checked	Approved

Title
Figure 17-13
Chapter 17: Coastal and Marine Physical Processes
Arsenic Concentrations - NOAA Effect Range and Cefas Action Levels
EGL 5 EIA Preliminary Environmental Information Report
Volume 3: Figures

nationalgrid

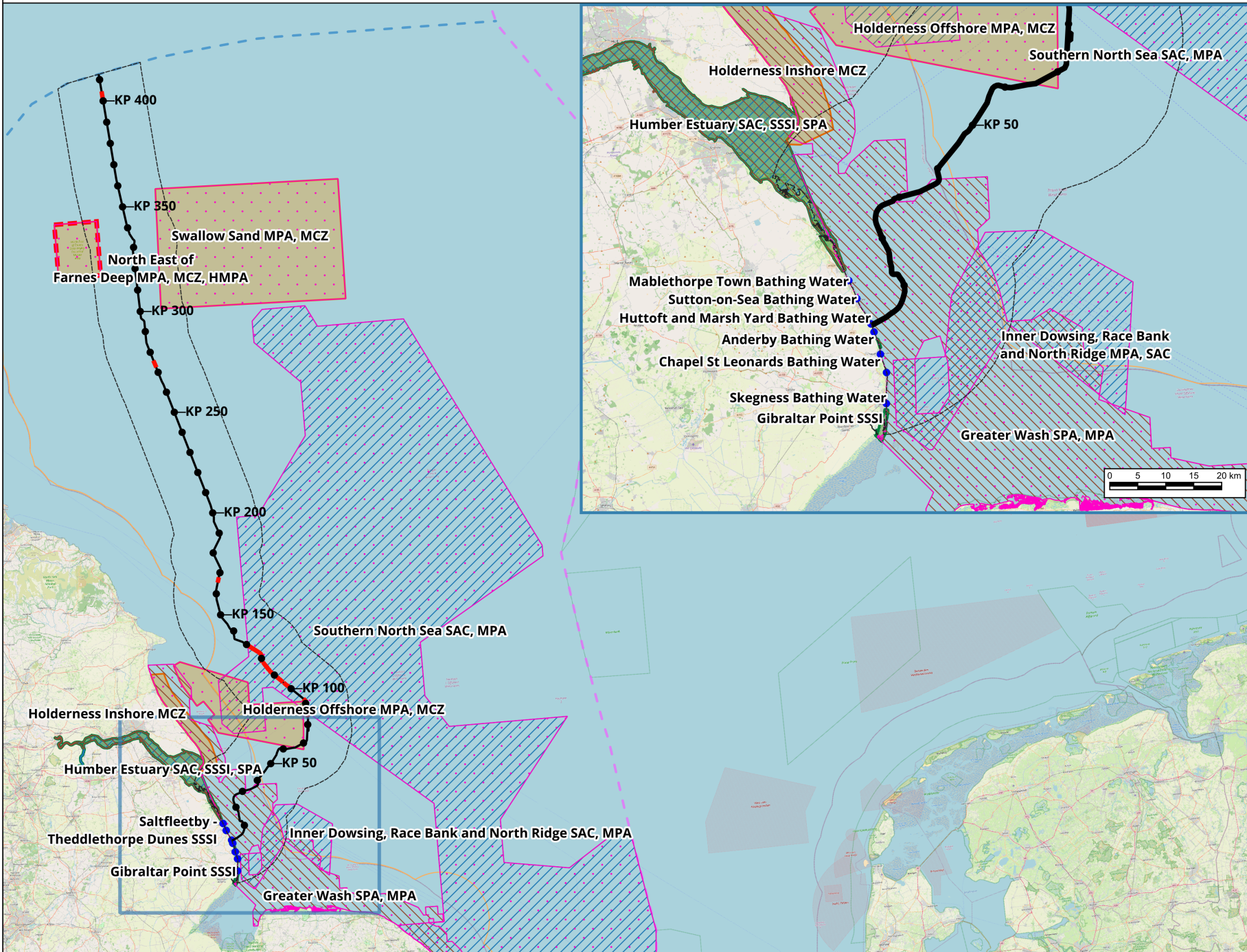
Figure Number: Figure 17-13

Drawing Reference: PU093_CC_EG5_As_Contaminants

Scale	Sheet Size	Sheet	Issue
1:1,600,000	A3	SHEET 1 OF 1	1



Figure 17-14
Chapter 17: Coastal and Marine Physical Processes
Designated Areas



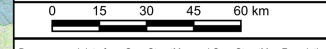
Legend

- KP
- English Offshore Scheme draft Order Limits
- Sandwave
- Coastal and Marine Physical Processes 19.8 km Study Area
- Marine Protected Area
- ▨ Special Protection Area
- ▧ Special Area of Conservation
- Site of Special Scientific Interest
- Marine Conservation Zone
- Highly Protected Marine Areas
- Designated Bathing Water Site
- Scottish Marine Border
- 12 NM Limit
- EEZ

Notes
This drawing is scaled at paper size A3, therefore any prints taken at smaller sizes will affect accuracy of the measurement units and should not be scaled against.



Coordinate System: ETRS89 / UTM zone 30N
Sheet X Centroid Coordinate: 729619E; Sheet Y Centroid Coordinate: 5919437N



Base map and data from OpenStreetMap and OpenStreetMap Foundation (CC-BY-SA). © <https://www.openstreetmap.org> and contributors. UKHO Contains public sector information licensed under the Open Government Licence v3.0.

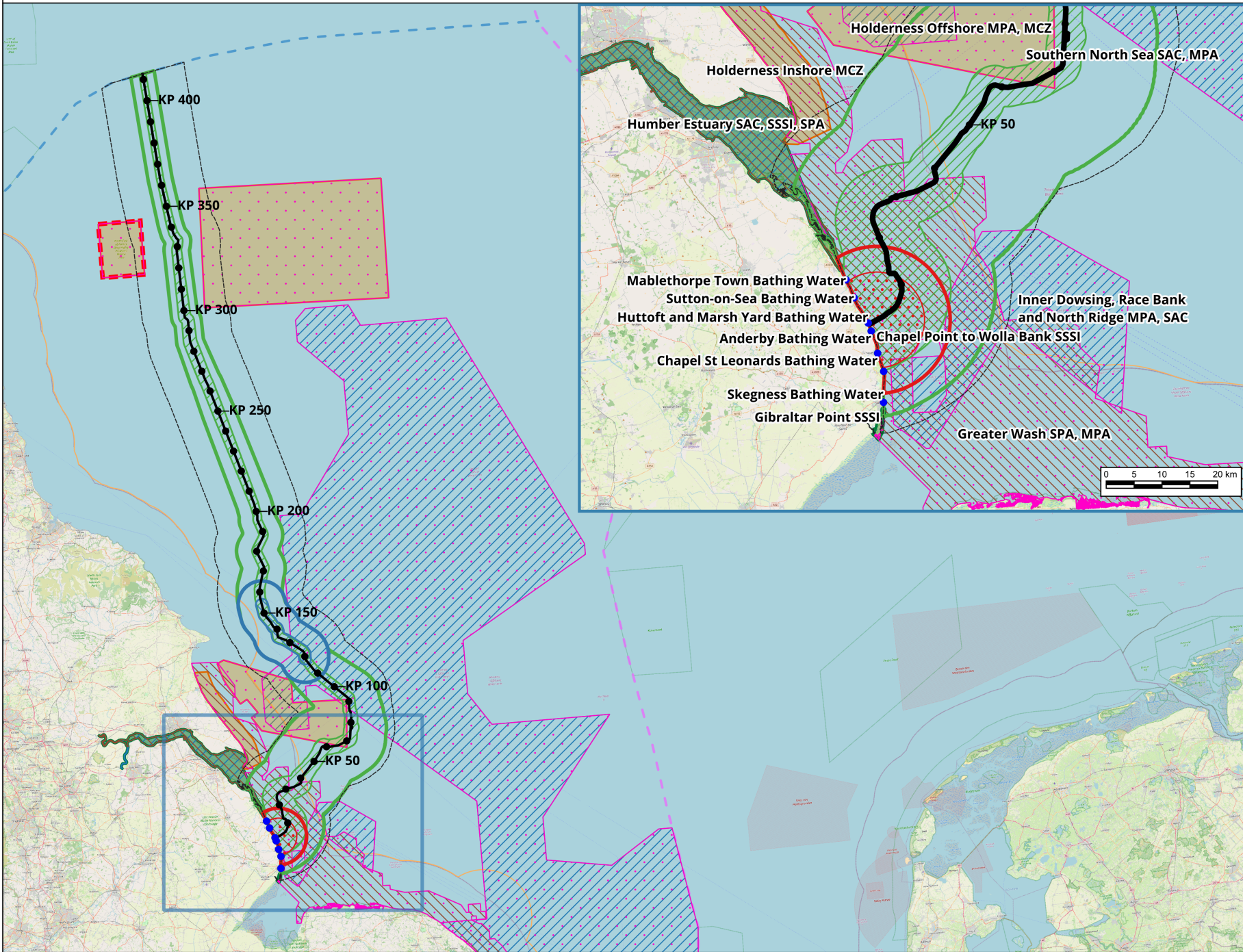
1	07/04/2026	DRAFT	CC	RW	RW
Issue	Date	Remarks	Drawn	Checked	Approved

Title
Figure 17-14
Chapter 17: Coastal and Marine Physical Processes
Designated Areas
EGL 5 EIA Preliminary Environmental Information Report
Volume 3: Figures

nationalgrid	
Figure Number	Figure 17-14
Drawing Reference	PU093_CC_EG5_designated_sites
Scale	1:700,000
Sheet Size	A3
Sheet	SHEET 1 OF 1
Issue	1



Figure 17-15
Chapter 17: Coastal and Marine Physical Processes
Predicted Sediment Plume Areas



Legend

- KP
- English Offshore Scheme draft Order Limits
- Coastal and Marine Physical Processes 19.8 km Study Area
- ☐ HDD Punch-out Plume Area to 10 mg/l
- ☐ HDD Punch-out Plume Area to 0 mg/l
- ▨ Sand Wave Clearance Plume Area to 10 mg/l
- ▨ Sand Wave Clearance Plume Area to 0 mg/l
- ▨ Trenching Plume Area to 10 mg/l
- ▨ Trenching Plume Area to 0 mg/l
- ▨ Marine Protected Area
- ▨ Special Protection Area
- ▨ Special Area of Conservation
- ▨ Site of Special Scientific Interest
- ▨ Marine Conservation Zone
- ☐ Highly Protected Marine Areas
- Designated Bathing Water Site
- Scottish Marine Border
- 12 NM Limit
- EEZ

Notes
This drawing is scaled at paper size A3, therefore any prints taken at smaller sizes will affect accuracy of the measurement units and should not be scaled against.



Coordinate System: ETRS89 / UTM zone 30N
Sheet X Centroid Coordinate: 729619E, Sheet Y Centroid Coordinate: 5919437N

0 15 30 45 60 km

Base map and data from OpenStreetMap and OpenStreetMap Foundation (CC-BY-SA). © <https://www.openstreetmap.org> and contributors. UKHO Contains public sector information licensed under the Open Government Licence v3.0.

1	07/04/2026	DRAFT	CC	RW	RW
Issue	Date	Remarks	Drawn	Checked	Approved

Title
Chapter 17-15
Coastal and Marine Physical Processes
Predicted Sediment Plume Areas
EGL 5 EIA Preliminary Environmental Information Report
Volume 3: Figures

nationalgrid

Figure Number	Figure 17-15
Drawing Reference	PU093_CC_EGS_Plume_Extents
Scale	1:700,000
Sheet Size	A3
Sheet	SHEET 1 OF 1
Issue	1