

Connecting clean green energy

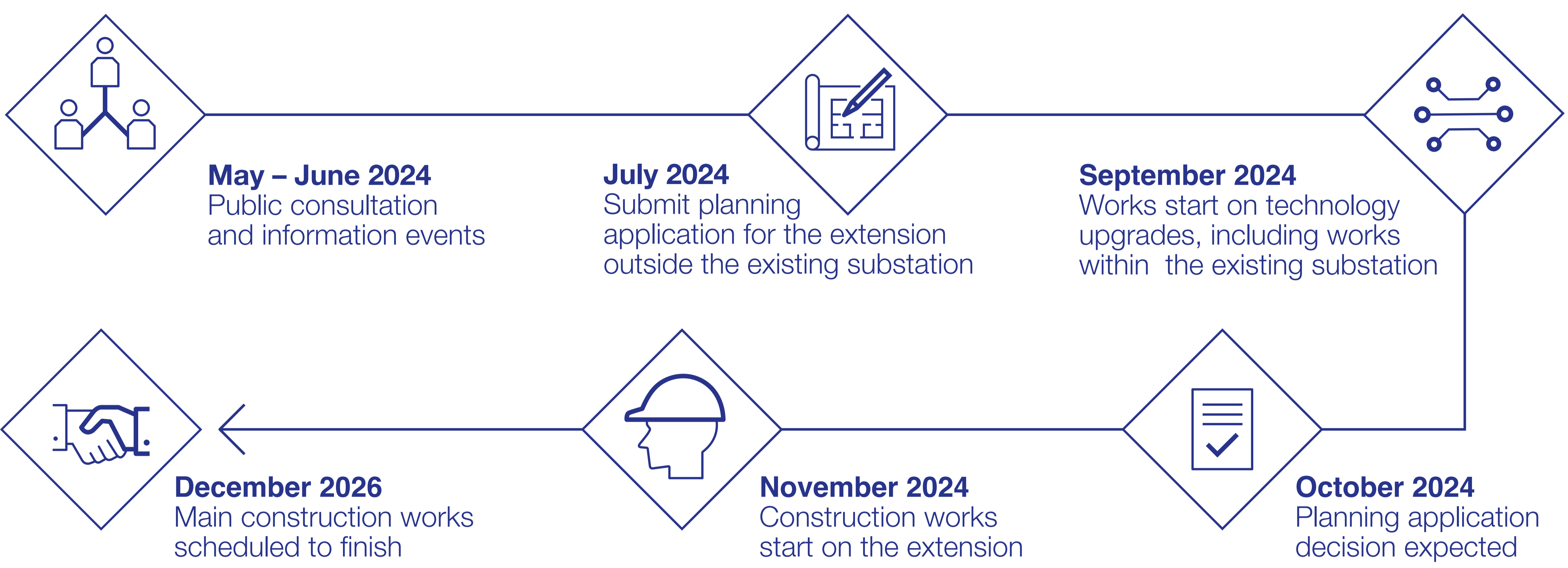
The Walpole Substation expansion is needed to connect new sources of renewable energy, manage power flows on the network and support future demand.

This will involve accommodating new infrastructure at the existing substation and upgrading the existing technology, which was originally installed when the substation was built in the 1960s.

These proposals form part of **The Great Grid Upgrade** – the largest overhaul of the grid in generations.

The Great Grid Upgrade will play a significant part in meeting the UK Government's plans to power all homes and businesses with green energy by 2030 ensuring our electricity network is fit for the future.

Timeline



Indicative mock up of the completed works.

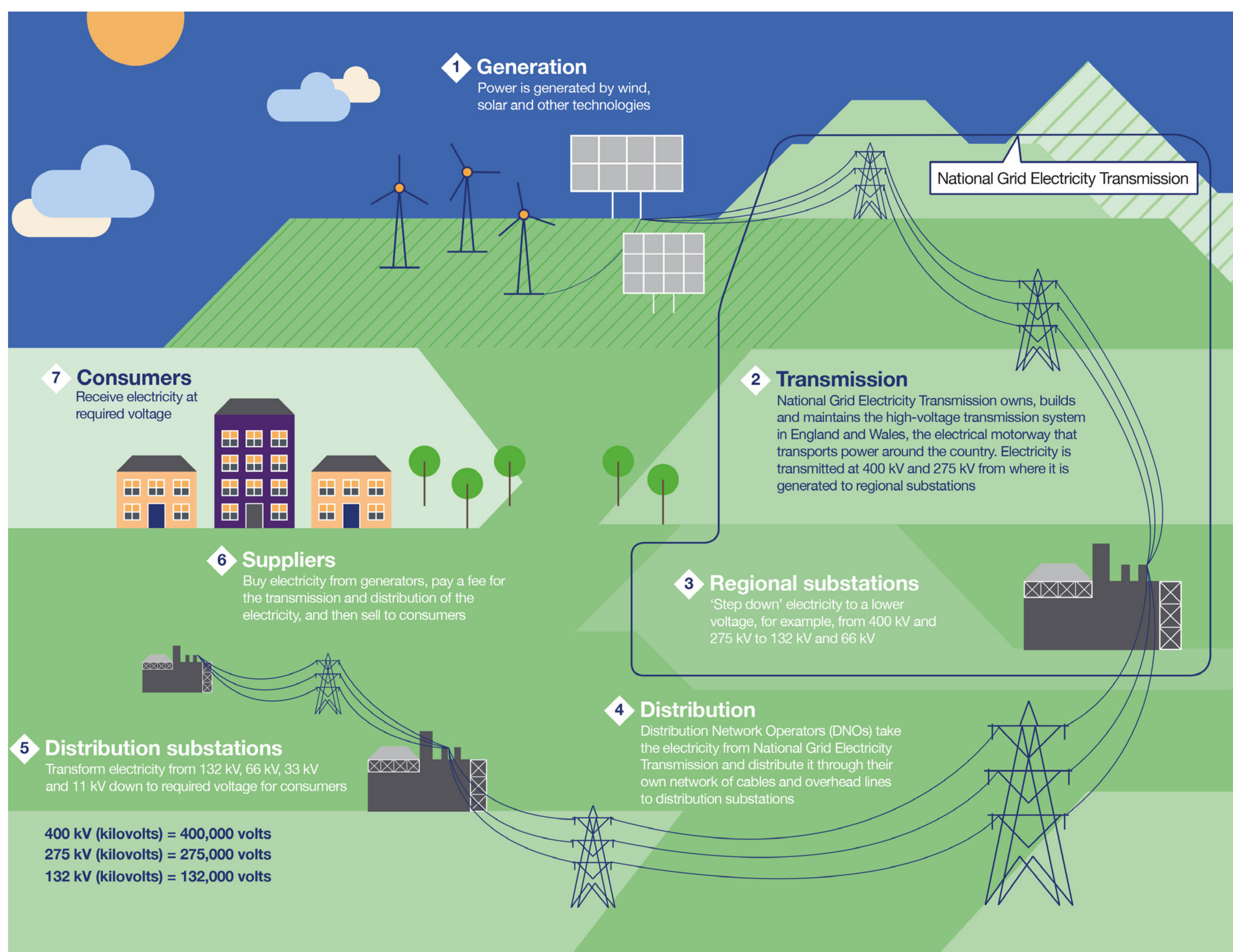


About National Grid

National Grid Electricity Transmission (NGET) owns and maintains the electricity transmission network in England and Wales.

We transport electricity from where it is generated, such as solar and offshore wind, to regional substations, where it then continues on its journey to homes and businesses.

To ensure that everyone can access electricity from renewable sources, we are working to build a cleaner, fairer, and more affordable energy system that serves everyone, and powers the future of our homes, transport and industry.



Working with other projects

Walpole Substation expansion is not part of EGL 3 and EGL 4 or Grimsby to Walpole. Please be assured we are working closely with our colleagues on these projects to minimise disruption to local communities.

Community Grant Programme (CGP)

The CGP is aimed at community organisations and charities in areas where our essential work is impacting local people through our operations and construction activities.

Communities impacted by the refurbishment of substations can apply for **grants of up to £10,000.**

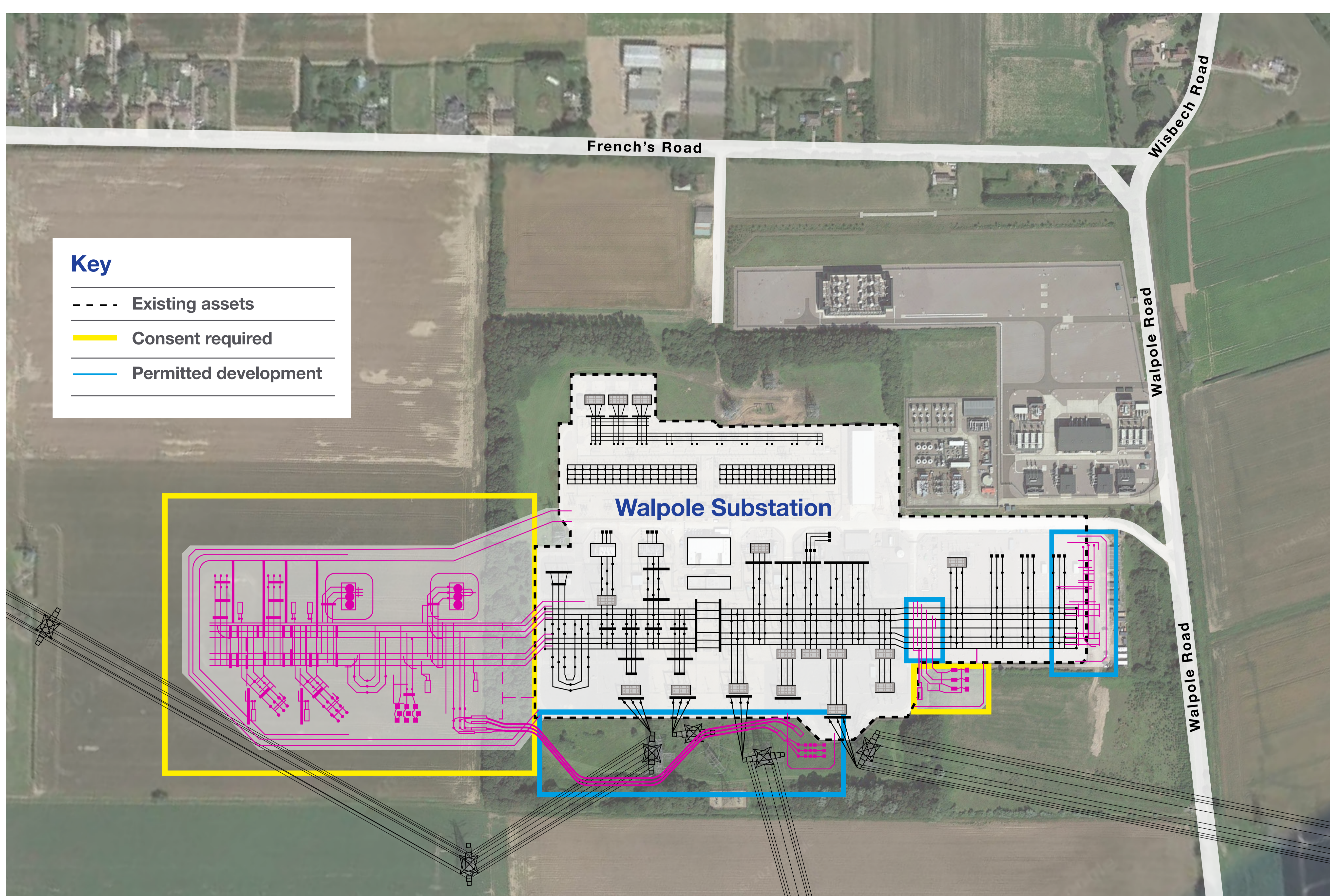


Scan if you would like to find out more about the CGP

Our proposals

We have permitted development rights to deliver some of the work needed for this project, which is indicated by the blue boxes on the map.

Other parts of the project will require planning permission – indicated by the red boxes on the map. This new infrastructure will facilitate new connections to our network, including renewable energy sources, and will support future demand.



Biodiversity net gain

We are committed to providing a minimum of 10% biodiversity net gain in areas where we work – this means there will be an improvement on the existing biodiversity in the area once we have finished our project.

Surveys are underway to assess the expected level of vegetation removal including plans for additional landscaping and planting - this will form part of our planning application.



Indicative mock up of the completed works.

Have your say and next steps

Public consultation

Our consultation will run from **Friday 10 May to Thursday 6 June 2024 (until 11:59pm)** and will include a mix of online and in person activities. During this time, you will be able to consider our consultation materials and feedback on our plans.

We are holding an in-person consultation event where information about our proposals will be on display and members of the project team will be available to answer your questions:

Date: Monday 20 May 2024

Time: 2pm – 7pm

Location: Walpole Community Centre,
Summer Close, Walpole St Andrew PE14 7JW



Contact us

Please contact us if you have any questions and if you would like to receive a printed copy of our consultation materials, including our feedback form, which can be returned to our Freepost address.

walpole@nationalgrid.com

0800 083 3149 (9am – 5pm Monday to Friday)

WALPOLE SUBSTATION EXPANSION PROJECT

(no stamp or further details required)

nationalgrid.com/WalpoleSubstationExpansion