

## The Great Grid Upgrade

Eastern Green Link 3 (EGL 3) and  
Eastern Green Link 4 (EGL 4)  
Grimsby to Walpole

# Eastern Green Link 3 (EGL 3) and Eastern Green Link 4 (EGL 4) and Grimsby to Walpole

**Document: Environmental Implications of Change (EIC) – Section 7  
South Holland Drain to Walpole area / New Walpole B Substation**

**EGL-WSP-CONS-XX-RP-YC-213**

**Version: A**

April 2026

# Contents

---

<b>1.</b>	<b>Environmental Implications of Change (EIC) – Section 7 South Holland Drain to Walpole area / New Walpole B Substation</b>	<b>1</b>
1.1	Introduction	1
1.2	Description of the Proposed Changes Since Stage 2 Consultation 2025	7
1.3	Environmental Implications of Change Approach and Method	8
1.4	Environmental Implications of Change	9
1.5	Conclusion	22
	<b>Appendix A Detailed Maps – Section 7</b>	<b>24</b>
	<b>Appendix B Table of Changes for EGL 3 and EGL 4 only – Section 7</b>	<b>35</b>
	<b>Appendix C Table of Changes for GtW and EGL 3 and EGL 4 – Section 7</b>	<b>39</b>

---

	References	23
--	------------	----

---

**1. Environmental Implications of Change (EIC) – Section 7  
South Holland Drain to  
Walpole area / New Walpole B  
Substation**

# 1. Environmental Implications of Change (EIC) – Section 7 South Holland Drain to Walpole area / New Walpole B Substation

## 1.1 Introduction

- 1.1.1 This Environmental Implications of Change (EIC) report has been prepared to support targeted consultation jointly for Eastern Green Link 3 (EGL 3) and Eastern Green Link 4 (EGL 4) and Grimsby to Walpole (GtW). The report outlines changes made to the Order Limits of EGL 3 and EGL 4 and GtW, since Stage 2 consultation (herein referred to as the ‘Draft Order Limits from Stage 2 consultation 2025’). Stage 2 consultation for EGL 3 and EGL 4 was held between 13 May and 25 June 2025. Stage 2 consultation for GtW was held between 11 June and 06 August 2025.
- 1.1.2 This report makes specific reference to EGL 3 and EGL 4 Section 7 South Holland Drain to Walpole Area and GtW Section 7 New Walpole B Substation. These sections are referred to collectively as ‘Section 7’ throughout this report.
- 1.1.3 Some changes within Section 7 are being proposed which relate to both EGL 3 and EGL4 and GtW; specifically, the Walpole B substation is a shared connection point, and so there is an overlap between the projects in the Walpole area. Joint targeted consultation is therefore being undertaken for EGL3 and EGL4 and GtW in areas where proposed changes overlap between the two projects.
- 1.1.4 This report supports the joint targeted consultation by undertaking the following:
- For EGL 3 and EGL 4: providing a description of all the changes to the EGL 3 and EGL 4 Order Limits within Section 7 since Stage 2 consultation in 2025, and assessing whether the proposed changes introduce any material change to environmental effects in comparison to what has been the subject of previous consultations. In this case, the effects presented within the EGL 3 and EGL 4 Preliminary Environmental Information Report (PEIR) prepared in May 2025 and presented at Stage 2 consultation (**Ref 1-1**).
  - For GtW: providing a description of certain changes to the GtW Order Limits (those changes that are shared with EGL 3 and EGL 4) within Section 7 since Stage 2 consultation in 2025, and assessing whether the proposed changes introduce any material change to likely environmental effects in comparison to what has been the subject of previous consultations. In this case the likely effects presented within the GtW PEIR prepared in June 2025 and presented at Stage 2 consultation (**Ref 1-1**).
- 1.1.5 Targeted consultation is being undertaken on proposed changes to the Order Limits within all Sections of EGL 3 and EGL 4. Separate EIC reports covering Sections 1 to 6 of EGL 3 and EGL 4 are available on the EGL 3 and EGL 4 project website<sup>1</sup>.
- 1.1.6 **Section 1.3** describes the methodology used for this assessment.

---

<sup>1</sup> <https://www.nationalgrid.com/the-great-grid-upgrade/eastern-green-link-3-and-4>

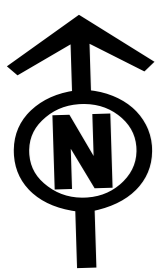
- 1.1.7 This EIC report should be read alongside the associated Section 7 targeted consultation leaflet. This report can be viewed on both the EGL 3 and EGL 4 respective project websites<sup>23</sup>. There is no formal requirement to prepare a PEIR or an addendum to the PEIR to support this consultation (**Ref 1-2**).
- 1.1.8 **Image 1** presents the EGL 3 and EGL 4 Draft Order Limits from Stage 2 consultation 2025 and the proposed changes that have since been incorporated into the Order Limits (Additional Areas for Targeted Consultation 2026) for Section 7.
- 1.1.9 **Image 2** presents the GtW Draft Order Limits from Stage 2 consultation 2025 Consultation and the proposed changes that are shared with EGL 3 and EGL 4 and have since been incorporated into the Order Limits (Additional Areas for Targeted Consultation 2026) for Section 7.
- 1.1.10 Maps showing all of the changes in detail for Section 7 are included in **Appendix A**. These maps contain references for each individual change (for example Change 7-1) which correspond to detailed descriptions provided in **Appendix B** and **Appendix C**. These appendices have been prepared as follows:
- **Appendix B** includes detailed descriptions of all the changes to the EGL 3 and EGL 4 Draft Order Limits, except for the changes within the Walpole area which are shared with GtW;
  - **Appendix C** includes detailed descriptions for the shared changes to both the EGL 3 and EGL 4 and GtW Draft Order Limits within the Walpole area.

---

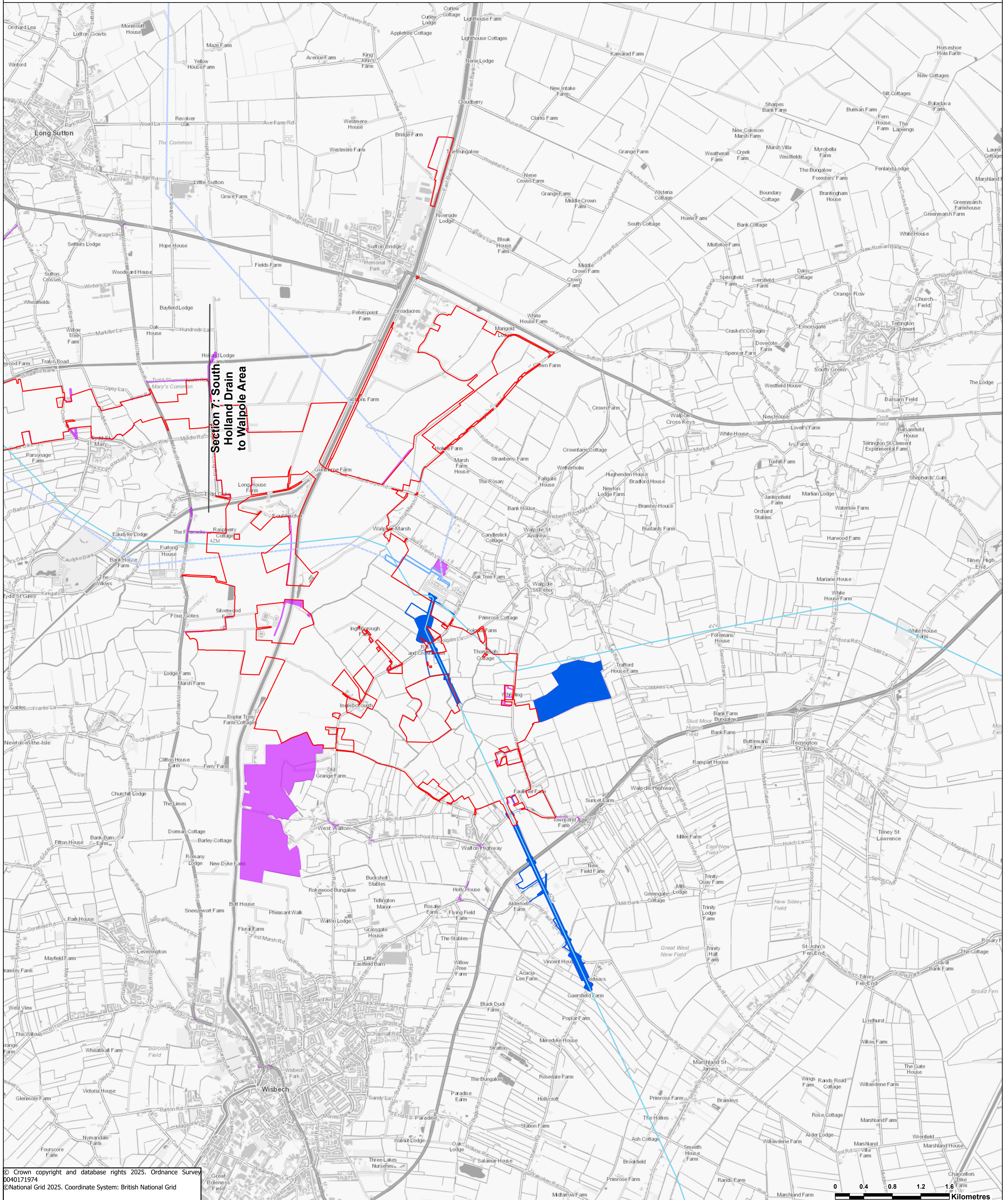
<sup>2</sup> <https://www.nationalgrid.com/the-great-grid-upgrade/eastern-green-link-3-and-4>

<sup>3</sup> <https://www.nationalgrid.com/the-great-grid-upgrade/grimsby-to-walpole>

**Image 1: Proposed Changes to the EGL 3 and EGL 4 Order Limits for Section 7**



# Eastern Green Link (EGL) 3 & EGL 4 - Section Overview



© Crown copyright and database rights 2025. Ordnance Survey 0040171974  
 © National Grid 2025. Coordinate System: British National Grid

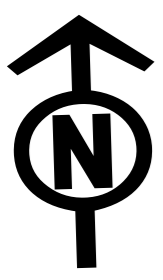
## Legend

- EGL 3/4 Draft Order Limits from Stage 2 consultation 2025
- EGL 3/4 Only Additional Areas for Targeted Consultation 2026
- EGL 3/4 and GtW Additional Areas for Targeted Consultation 2026
- Existing 132kV Linear Electrical Infrastructure
- Existing 400kV Linear Electrical Infrastructure

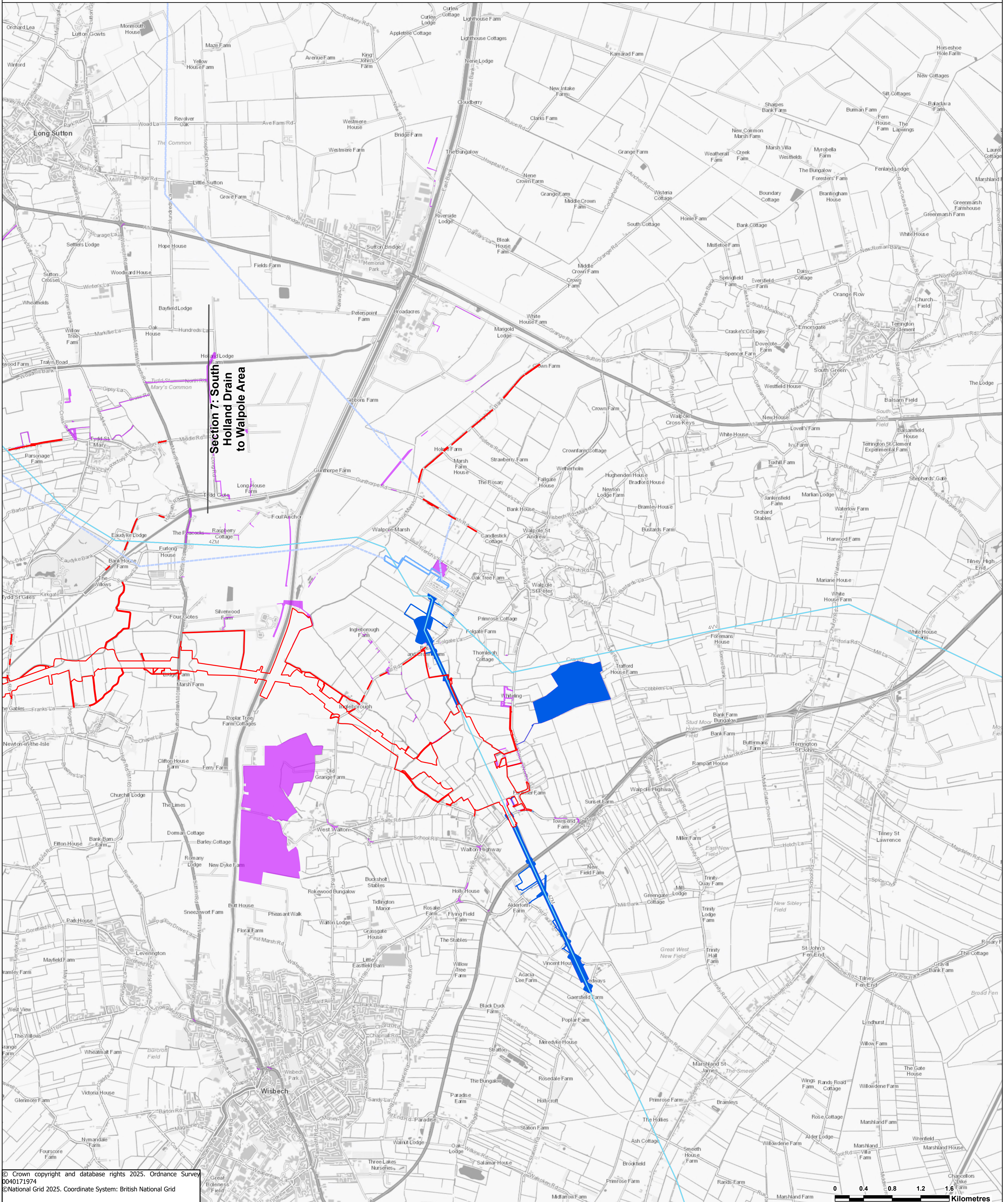
**nationalgrid**

Figure Number				—
Drawing Reference				EGL-WSP-CONS-XX-DR-Y-172
Scale at A3:	Sheet Size	Sheet	Issue	
1:25,000	A3	SHEET 1 OF 1	1	

## Image 2: Proposed Changes to the GtW Order Limits for Section 7



# Grimsby to Walpole (GtW) - Section Overview



© Crown copyright and database rights 2025. Ordnance Survey 0040171974  
 © National Grid 2025. Coordinate System: British National Grid

## Legend

- Grimsby to Walpole Draft Order Limits from Stage 2 consultation 2025
- EGL 3/4 Only Additional Areas for Targeted Consultation 2026
- EGL 3/4 and GtW Additional Areas for Targeted Consultation 2026
- Existing 132kV Linear Electrical Infrastructure
- Existing 400kV Linear Electrical Infrastructure

**nationalgrid**

Figure Number				—
Drawing Reference				EGL-WSP-CONS-XX-DR-Y-173
Scale at A3:	Sheet Size	Sheet	Issue	
1:25,000	A3	SHEET 1 OF 1	1	

## 1.2 Description of the Proposed Changes Since Stage 2 Consultation 2025

1.2.1 Since the EGL 3 and EGL 4 and GtW Stage 2 consultations held in 2025, the design of the projects has changed. Though EGL 3 and EGL 4 and GtW, taken as a whole, have not changed significantly, we are proposing some changes to the Draft Order Limits from the respective Stage 2 consultations held during 2025 within Section 7, which are needed to support the safe construction and operation of the projects. This includes additional land required for:

- Diversions of existing utilities - some temporary and permanent works to raise the height of existing overhead lines by 10%, to allow for access of tall vehicles to facilitate construction, and some works to move existing overhead lines underground as a more permanent solution. Compounds may also be needed to facilitate these works in some locations.
- Restrunging (replacement or retightening of the wires) of the overhead lines on the existing 4ZM overhead line – required to reconnect the existing OHL after works to reconnect the proposed Walpole B substation to the 4ZM are complete.
- Road works – in some places highway widening may be required to accommodate general construction traffic, while in others widening or clearance will be needed to facilitate the safe passage of Abnormal Indivisible Loads (AILs)<sup>4</sup>.
- Drainage infrastructure.
- The use and extension of existing access tracks to facilitate construction and future maintenance.
- The operation of construction compounds. These works will be required for EGL 3 and EGL 4 only.
- Measures to mitigate effects on the environment (referred to in this document as mitigation measures) - For Section 7, these areas primarily relate to water vole, farmland bird and skylark mitigation areas.
  - The total area included in the Order Limits for environmental mitigation areas is likely greater than that needed. Following this targeted consultation, feedback from landowners will be considered and the Order Limits for the EGL 3 and EGL 4 and GtW DCOs refined accordingly.

1.2.2 Detailed lists of all changes to the EGL 3 and EGL 4 and GtW Draft Order Limits from Stage 2 consultation 2025 within Section 7 are included in the appendices of this report. This list in **Appendix B** includes the changes relevant to EGL 3 and EGL 4 only, and the list in **Appendix C** includes the changes which are common between both EGL 3 and EGL 4 and GtW.

---

<sup>4</sup> An abnormal Indivisible Load (AIL) is a very large or heavy item that cannot be broken down into smaller parts for transport and is too big or heavy to be moved under normal road limits. Road works will be required to ensure safe passage of the AILs without damaging infrastructure or posing risks to road users.

## 1.3 Environmental Implications of Change Approach and Method

- 1.3.1 The methodology to assess the environmental implications of change has been developed with reference to the guidance issued by the Department for Levelling Up, Housing and Communities (DLUHC) regarding *Planning Act 2008: Preapplication stage for Nationally Significant Infrastructure Projects (Ref 1-1)*.
- 1.3.2 In particular, the methodology considers the following criteria:
- “Only where the project taken as a whole changes very significantly, and to such a large degree that what is being taken forward is fundamentally different from what was previously consulted on, should re-consultation on the proposed application as a whole be considered.*
- In understanding whether there has been a material and substantial change, applicants should take into account the following guiding factors:*
- the degree of change as compared to the proposals previously consulted upon as a whole;*
- the number of materially worse environmental effects as compared to what has been the subject of previous consultations; and*
- the level of public interest, and the likelihood that such interest would merit further consideration in the context of that change.*
- For any material change to a part of the proposed application where the project as a whole is not fundamentally changed, for example in the case of linear aspects where new information leads to a new alignment for a particular section of the proposal, a bespoke and targeted approach to further consultation can be adopted, which can address the specific consultation obligations arising proportionately.”*
- 1.3.3 The methodology used in this EIC report to assess whether there has been a material and substantial change has followed the same approach for assessment of significance that was adopted in the EGL 3 and EGL 4 and GtW PEIRs:
- For EGL 3 and EGL 4, this approach is defined in Volume 1, Part 1, Chapter 5: PEIR Approach and Methodology of the PEIR **(Ref 1-3)**.
  - For GtW, this approach is defined in Volume 2 Part A - Chapter 4 Approach to Preliminary Environmental Information and supporting appendices of the PEIR **(Ref 1-4)**.
- 1.3.4 We have reviewed the proposed changes included in the current Order Limits against the Draft Order Limits from Stage 2 consultation 2025, presented within the PEIRs and at Stage 2 consultation and evaluated whether the changes would lead to any of the following:
- Previously identified adverse impacts increasing in magnitude.
  - The introduction of new adverse environmental effects, that were not anticipated or assessed within the PEIRs;
  - Adverse effects previously identified as not significant within the PEIRs, which could now be significant; or

- 1.3.5 We have applied the same methodologies and principles set out in the PEIRs based on the information available and recognising that GtW and EGL 3 and EGL 4 are the subject of ongoing consultation and environmental surveys.
- 1.3.6 This EIC focuses on the likely significant environmental effects during the construction and operation phases that would be material to a decision to consent the projects.
- 1.3.7 Within Section 7, there are generally no anticipated changes to decommissioning to those set out in the original PEIRs. Therefore, decommissioning is not discussed further in this EIC.
- 1.3.8 The effects noted in this EIC take into account any mitigation measures that were identified within the original PEIRs, that would avoid or reduce significant environmental effects from the construction and operation of EGL 3 and EGL 4 and GtW.
- 1.3.9 The EGL 3 and EGL 4 PEIR (Volume 1, Part 1, Chapter 4: Project Description) (**Ref 1-5**) and the GtW PEIR (Volume 2 Part A - Chapter 5 Project Description) (**Ref 1-6**) include a number of assumptions regarding the construction programme and working methods. These assumptions all still apply (unless specified otherwise in the paragraphs that follow) and have been used when assessing the changes presented within this EIC.
- 1.3.10 For the purposes of this assessment, where optionality exists in the design of the changes, the 'reasonable worst-case' out of each of the potential work options has been assessed for each technical topic.

## 1.4 Environmental Implications of Change

- 1.4.1 We have undertaken this review against each of the technical topics covered by the PEIRs, with respect to Section 7. These technical topics are as follows (noting that some of these topics have different naming conventions for EGL 3 and EGL 4 and GtW): Agriculture and Soils; Air Quality; Biodiversity (EGL 3 and EGL 4) / Ecology and Biodiversity (GtW); Geology and Hydrogeology; Health and Wellbeing; Cultural Heritage (EGL 3 and EGL 4) / Historic Environment (GtW); Water Environment; Landscape and Visual Amenity; Noise and Vibration; Socio-economics, Recreation and Tourism; Traffic and Transport (EGL 3 and EGL 4) / Traffic and Movement (GtW); and Greenhouse Gas (EGL 3 and EGL 4) / Climate Change (GtW). Cumulative Effects have not been included in this report, as no assessment of cumulative effects was presented within the PEIRs. However, the potential for cumulative effects arising from the construction and operation of EGL 3 and EGL 4 and GtW in the Walpole area is acknowledged, and a cumulative effects assessment will be presented in the Environmental Statements submitted with the respective DCO applications.
- 1.4.2 The assessment undertaken as part of this EIC has identified that for a number of the environmental topics, the environmental effects would likely be different to those presented within the original PEIRs submitted at Stage 2 consultation.
- 1.4.3 For the assessment of the changes to the EGL 3 and EGL 4 Draft Order Limits, except for the changes within the Walpole area which are shared with GtW, the conclusions have been summarised and are presented in **Table 1-1**.

1.4.4 For the assessment of the shared changes to both the EGL 3 and EGL 4 and GtW Draft Order Limits within the Walpole area, the conclusions have been summarised and are presented in **Table 1-2**.

Table 1-1 Environmental implications of the EGL 3 and EGL 4 proposed changes, except for the changes within the Walpole area which are shared with GtW, when compared to the preliminary assessment presented in the EGL 3 and EGL 4 PEIR

Environmental Topic	Comments / observations / identified environmental implications of the proposed change when compared to the preliminary assessment presented in the PEIR
Agriculture and Soils	<p>The provisional Agricultural Land Classification (ALC) grade and Soil Associations presented at Stage 2 consultation in 2025 remain representative of those identified for the changes discussed in this document. This includes Provisional ALC Grade 1 and Grade 2 land, which are assumed to comprise Best and Most Versatile (BMV) land. In general, where proposed changes impact agricultural land, they are small scale (all changes except one – discussed below – are 3 ha or under), located on field margins or in corners of arable fields. Therefore, they will not cause a change to the type or significance of agriculture and soil effects compared to the design and information outlined in the PEIR presented at Stage 2 consultation in 2025. For reference, the assessment presented in Chapter 11 of the PEIR for Agriculture and Soils receptors was:</p> <ul style="list-style-type: none"> <li>• Construction: not significant for Agricultural Land Holdings; significant for Soil Function and Agricultural Land Quality.</li> <li>• Operation and maintenance: significant for Agricultural Land Quality, not significant for Soil Function or Agricultural Land Holdings.</li> </ul> <p>Change 7-102 is mapped as covering 102 ha of land, to be used for environmental mitigation comprising farmland bird habitat as described above for skylark mitigation in change 7-71. This will not change the type or significance of agriculture and soil effects when compared to the Draft Order Limits from Stage 2 consultation 2025 presented in the PEIR and at Stage 2 consultation.</p>
Air Quality	<p>There will be no change to the nature, or significance of the air quality effects resulting from the proposed changes when compared with the effects described in the PEIR submitted at the Stage 2 consultation in 2025. The proposed changes are not expected to introduce any new or materially different air quality effects or alter the conclusions in the PEIR regarding their significance. Monitoring and mitigation measures identified in the design and PEIR will remain appropriate to manage any air quality impacts associated with the Projects.</p>
Biodiversity	<p>Areas of Environmental Mitigation (Change 7-102) incorporated into the Order Limits relate to ecological requirements and therefore contribute to efforts to compensate for potential ecological impacts and their effects, namely on birds and water vole.</p>

---

An ecological survey has also not yet been undertaken of Tydd Gote Bridge in relation to the proposed bridge improvement works (Change 7-144). Notably, assessment is required in relation to the bridge's suitability to support roosting bats. However, on the assumption that roosting bats are present within the bridge, a protected species licence would be obtained to permit the works. Providing appropriate mitigation and compensation (as required) is secured as part of the licence, significant effects are considered unlikely.

All other proposed changes are relatively small and discrete areas.

Overall, it is anticipated that there will be no change to the nature or significance of biodiversity effects as a result of the proposed changes, when compared to the design and PEIR presented at the Stage 2 consultation in 2025.

---

#### Geology and Hydrogeology

There will be no change to the nature or significance of geology or hydrogeology effects as a result of the proposed changes when compared to the design and PEIR presented at Stage 2 consultation in 2025, except for the following:

##### Geology

Changes 7-53 (construction compound to support existing utility diversions): These changes are adjacent to the existing Walpole substation. The substation is a potential contamination source and given the diversion and compound are close to the substation, there is a higher potential to encounter localised contamination compared with the design presented at Stage 2 consultation which was 80m from the existing Walpole Substation.

Change 7-57: The Utility Diversion and Land Drainage area is close (20m) to the gas compressor station (the Draft Order Limits from Stage 2 consultation 2025 were 160m away) which has been identified as a potential source of contamination thus localised change in impact is possible and given the diversion and land drainage are closer, there is a higher potential to encounter potential localised contamination.

Change 7-102: The Environmental Mitigation area is a new area and has not been previously assessed. A Water Treatment works (a potential source of contamination) has been identified immediately adjacent to the northern boundary. Therefore, there is a potential to encounter localised contamination for works in the north of the environmental mitigation area. This change could therefore lead to a new significant effect, when compared to the PEIR; noting that the proposed mitigation comprises a change in cropping practice and no physical works in this area are proposed as part of the Projects.

---

#### Health and Wellbeing

There will be no change to the nature or significance of health and wellbeing effects as a result of the proposed changes, when compared to the design and PEIR presented at Stage 2 consultation in 2025. Mitigation measures identified in the design and PEIR will remain appropriate to manage any health and wellbeing impacts associated with the Projects.

---

#### Cultural Heritage

It is anticipated that the following changes may lead to the introduction of new environmental effects when compared to the PEIR:

---

- 
- Change 7-102 (environmental mitigation area) does not impact known sites but this, will likely require additional evaluation. This could lead to the identification of previously unrecorded archaeology and therefore significant effects.

Beyond those described above, there will be no further change to the nature or significance of historic environment effects as a result of the proposed change, when compared to the design and PEIR presented at Stage 2 consultation in 2025.

---

#### Water Environment

The addition of the proposed change for inclusion of Environmental Mitigation areas is potentially beneficial for the water environment. There will be no change to the nature or significance of adverse water environment effects as a result of the proposed changes, when compared to the design and PEIR presented at Stage 2 consultation in 2025. The proposed control and management measures detailed in the PEIR will be effective in mitigating any effects associated with the proposed changes on these aspects of the water environment.

---

#### Landscape and Visual Amenity

There is potential for changes to the assessment of landscape and visual effects at the PEIR stage due to the proposed changes within the updates to the Order Limits. While many changes are minor or temporary, all will be fully considered and reassessed within the ES. The following changes are considered to have the potential to change the outcomes that were described within the PEIR:

- Change 7-12 – Includes amendments relating to utility diversions, highway works and land drainage. A residential receptor at South Holland Lodge and a public right of way along South Holland Main Drain is located in close proximity to the change that will potentially experience temporary impacts that was not included at PEIR stage;
  - Change 7-53 – Includes amendments relating to utility diversions. Should these changes result in the loss of vegetation that the location interacts with, then this would be a potential change from that described at PEIR for landscape character due to the loss/change of a feature. Depending on the amount of loss this could also impact the adjacent residents to the north along French's Road (associated with viewpoint 53) if visibility is opened up. These residents would potentially view the existing Walpole Substation, Lincs Windfarm Substation and Race Bank Onshore Connection Substation features they did not previously, as well the Proposed Development, increasing impacts compared with that described at PEIR;
  - Changes 7-82, 7-86, 7-87 – Includes land for land drainage, environmental mitigation and construction compounds/connections. Nearby residential receptors such as those along West Drove North (associated with viewpoint 59) potentially to experience increased temporary impacts compared with that described at PEIR;
  - Change 7-102 Includes additional land for environmental mitigation. These proposals have the potential to impact landscape character due to a change of land-use/features compared with that set out at PEIR. Nearby residents such as those to the west of
-

---

West Walton and the footpath along the River Nene (associated with viewpoints 52, 56 and 63) will potentially experience different impacts compared with that described at PEIR.

Other works associated with Changes within Section 7 are not expected to introduce any new or materially different landscape or visual effects or alter the conclusions in the PEIR presented at Stage 2 consultation in 2025 regarding their significance. This is either due to them being considered minor or be temporary in nature, in accordance with the assumptions made within this review

Changes 7-38, 7-45, 7-47, 7-50, 7-54, 7-55, 7-58, 7-63, 7-65, 7-68, 7-69, 7-74, 7-79, 7-82, 7-87, 7-88, 7-89, 7-145, and 7-146 include for the provision of or adjustments to Maintenance Access which is permanent. While individually considered minor in nature, these will be considered collectively with regards to landscape character and assessed at ES Stage with any vegetation removal requirements considered. At this stage, it is considered that, collectively, these changes may introduce new adverse effects when compared to the PEIR.

---

Noise and Vibration	There will be no change to the nature or significance of noise and vibration impacts resulting from the proposed changes when compared with the effects described in the PEIR presented at Stage 2 consultation in 2025. The proposed changes are not expected to introduce any new or materially different noise or vibration effects or alter the conclusions in the PEIR regarding their significance. Monitoring and mitigation measures identified in the design and PEIR will remain appropriate to manage any noise and vibration impacts associated with the Projects.
Socio-economics, Recreation and Tourism	There will be no change to the nature or significance of socio-economics, recreation and tourism effects as a result of the proposed changes when compared to the design and PEIR presented at Stage 2 consultation in 2025. Mitigation measures identified in the design and PEIR will remain appropriate to manage any socio-economic, recreation and tourism impacts associated with the Projects.
Traffic and Transport	There will be no changes to the nature, type or significance of traffic and transport effects as a result of the proposed changes, when compared to the design and PEIR presented at Stage 2 consultation in 2025. Mitigation measures identified in the design and PEIR will remain appropriate to manage any traffic and transport impacts associated with the Projects.

---

Table 1-2 Environmental implications of the shared EGL 3 and EGL 4 and GtW proposed changes, within the Walpole area, when compared to the preliminary assessment presented in the EGL 3 and EGL 4 and GtW PEIRs

Environmental Topic	Comments / observations / identified environmental implications of the proposed change when compared to the preliminary assessment presented in the PEIR
Agriculture and Soils	<p>The provisional Agricultural Land Classification (ALC) grade and Soil Associations presented at Stage 2 consultations in 2025 remains representative of those identified for the changes discussed in this document. This includes Provisional ALC Grade 1 and Grade 2 land, which are assumed to comprise Best and Most Versatile (BMV) land. In general, where proposed changes impact agricultural land, they are small scale (all changes except two – discussed below – are 3 ha or under), located on field margins or in corners of arable fields. Therefore, they will not cause a change to the type or significance of agriculture and soil effects compared to the design and information outlined in the PEIRs presented at Stage 2 consultation in 2025. For reference, the assessment presented in the EGL 3 and EGL 4 PEIR for Agriculture and Soils receptors was:</p> <ul style="list-style-type: none"> <li>• Construction: significant effects upon Agricultural Land Quality and soil function (temporary and permanent). Non-significant effects upon agricultural land holdings/land use.</li> <li>• Operation and maintenance: no significant effects due to operation and maintenance activities.</li> </ul> <p>The assessment presented in the GtW PEIR for Agriculture and Soils receptors was:</p> <ul style="list-style-type: none"> <li>• Construction: significant effects upon Agricultural Land Quality and soil function (temporary and permanent). Non-significant effects upon agricultural land holdings/land use;</li> <li>• Operation and maintenance: no significant effects due to operation and maintenance activities.</li> </ul> <p>Change 7-71 is mapped as covering 52 ha of Provisional ALC Grade 2 land to be used for environmental mitigation, of which, part (26 ha) is proposed for water vole mitigation, and the remainder for skylark habitat. Skylark habitat will primarily require changes to crop type, wider margins, and crop management timing. Water vole mitigation will comprise creation of water-filled ditches to serve as a water vole habitat. The affected fields are shown by aerial imagery to be under arable production, so the introduction of the water vole mitigation will remove some land from agricultural use. Due to the relative size of the land affected by this change compared to that affected by the projects as a whole, whilst Change 7-71 will result in additional permanent loss of BMV land, this will not cause a change to the type or significance of agriculture and soil effects when compared to the design and information outlined in the EGL 3 and EGL 4 and GtW PEIRs presented at Stage 2 consultation in 2025.</p> <p>Change 7-118 (18 ha) and changes 7-56, 7-59, 7-60, 7-64, 7-66 and 7-78 are associated with the restringing of the existing 4ZM overhead</p>

---

line. This work will cause minimal ground disturbance, limited primarily to the placement of trackway to allow vehicle tracking over topsoil and the installation of earthing spikes. Management of trackway use with respect to impact on soil will be included in the respective EGL 3 and EGL 4 and GtW Outline Soil Management Plans. Since access for the restringing works will be temporary and non-intrusive, Change 7-118 will not change the type or significance of those assessments.

Overall, for EGL 3 and EGL 4 and GtW, the proposed changes do not materially alter the conclusions set out in the PEIRs presented at Stage 2 consultation in 2025.

---

#### Air Quality

For EGL 3 and EGL 4 and GtW, there will be no change to the nature or significance of the air quality effects resulting from the proposed changes when compared with those described in the EGL 3 and EGL 4 and GtW PEIRs submitted at Stage 2 consultation in 2025.

Utility works, restringing of the 4ZM overhead line and the creation of the water vole mitigation area will result in localised impacts during construction. However, based upon the application of appropriate control measures, including the management of dust, these will not be of a scale that will result in any significant effects due to construction dust and PM<sub>10</sub>.

Construction traffic specifically attributable to the proposed changes will not be of a sufficient scale to result in significant air quality effects due to vehicle emissions. As reported in the PEIRs, when considering all construction traffic associated with the projects, projected changes in traffic flow on a number of local road links exceed the relevant assessment criteria and will therefore be assessed further. The proposed changes do not result in any additional road links requiring detailed assessment to those identified in the PEIRs.

Monitoring and mitigation measures identified in the design and PEIRs will remain appropriate to manage any air quality impacts associated with the projects.

A detailed air quality assessment will be included within the ES chapters submitted with the DCO applications for EGL 3 and EGL 4 and GtW respectively.

---

#### Biodiversity (EGL 3 and EGL 4) / Ecology and Biodiversity (GtW)

For EGL 3 and EGL 4, there will be no change to the nature or significance of the ecology and biodiversity effects resulting from the proposed changes when compared with the effects described in the EGL 3 and EGL 4 PEIR submitted at Stage 2 consultation in 2025.

For GtW, only Change 7-71 will result in changes to the effects described in the GtW PEIR submitted at Stage 2 consultation in 2025, as described below.

Changes 7-56, 7-59, 7-60, 7-64, 7-66, 7-78 and 7-118: For EGL 3 and EGL 4 and GtW, ecological surveys have not yet been undertaken in relation to the area that includes the restringing of existing 4ZM overhead line at Walpole. Works in these areas may result in additional temporary impacts upon protected or notable species which may be present within the affected area. However, land required temporarily to facilitate these works primarily consists of cultivated cropland of low biodiversity value. These works will cause minimal

---

---

ground disturbance, limited primarily to the placement of trackway to allow vehicle tracking over topsoil and the installation of earthing spikes. Localised management of habitats along field margins, including existing trees and hedgerow, may be required to ensure safe working. Whilst a full impact assessment is required, it is anticipated that significant effects can be reasonably avoided or mitigated by standard best practice and/or existing environmental mitigation measures. Direct impacts upon habitats will be minimised as far as practicable and once works are complete, habitats will be reinstated and management will be comparable to the baseline scenario.

Change 7-71: This compensatory habitat is proposed to address the potential significant effects upon water vole and farmland birds which were reported within the GtW PEIR, due to the permanent loss of existing habitats within the extents of the Walpole B Substation. Based upon the implementation of these mitigation areas, residual significant effects upon water vole and farmland bird species due to works in Section 7 will be unlikely. It is also noted that these mitigation areas will predominantly be located within existing cultivated cropland with low biodiversity value. Therefore, the relocation of these areas does not introduce any new or different significant effects upon habitats or protected or notable species.

All other proposed changes are relatively small and affect discrete areas. They will not alter the conclusions set out in the EGL 3 and EGL 4 and GtW PEIRs presented at Stage 2 consultation in 2025.

---

Geology and Hydrogeology (EGL 3 and EGL 4)

For EGL 3 and EGL 4 and GtW, there will be no change to the nature or significance of geology or hydrogeology effects as a result of the proposed changes when compared to the designs and PEIRs presented at Stage 2 consultation in 2025.

Change 7-56 (existing utility diversion): These changes are adjacent to the existing Walpole substation. The substation is a potential contamination source and given the diversion and compound are close to the substation, there is a higher potential to encounter localised contamination compared with the design presented at Stage 2 consultation which was 80m from the existing Walpole Substation. Whilst a full impact assessment is required, it is anticipated that significant effects can be reasonably avoided or mitigated by standard best practice and/or existing environmental mitigation measures.

All other works, including diversions of existing utilities, restringing of the 4ZM overhead line and the creation of the environmental mitigation areas are unlikely to alter impacts due to the nature of the works and the absence of sensitive geological or hydrogeological receptors. This includes the absence of any Source Protection Zones or groundwater abstractions within the affected areas. The superficial deposits (Tidal Flat deposits) and solid strata (mudstone of the Ampthill Clay Formation) across the area are both designated as Unproductive Strata, defined as strata which have negligible significance for water supply or baseflows to rivers, lakes and wetlands.

---

Health and Wellbeing

For EGL 3 and EGL 4 and GtW, there will be no change to the nature or significance of health and wellbeing effects as a result of the

---

---

proposed changes, when compared to the design and PEIRs presented at Stage 2 consultation in 2025.

Diversions of existing utilities, restringing of the 4ZM overhead line and the creation of the water vole mitigation area will result in localised impacts during construction. However, based upon the application of appropriate control measures, such as best practicable means to manage noise and dust, active community liaison and management of construction hours, these impacts are not anticipated to be of a scale that will result in any significant health and wellbeing effects.

---

Cultural Heritage (EGL 3 and EGL 4) / Historic Environment (GtW) For EGL 3 and EGL 4 and GtW, there will be no change to the nature or significance of adverse cultural heritage effects as a result of the proposed changes, when compared to the design and PEIR presented at Stage 2 consultation in 2025.

Change 7-71 encompasses a number of fields in which finds of medieval pottery have been recorded during fieldwalking. The remains would have been removed when first identified but it is unknown if any additional sherds remain in situ. As the skylark and other farmland birds mitigation area does not require intrusive works, there will be no new impacts to potential buried archaeological remains due to this element. However, permanent impacts arising from the construction of the water vole mitigation area, which requires excavation to create wetland habitats, could result in the partial loss of buried archaeological remains. With appropriate mitigation measures in place, the potential impact of these excavation works upon buried archaeological remains will not result in a significant effect upon cultural heritage / the historic environment. There are no designated assets within or immediately adjacent to the proposed Additional Environmental Mitigation areas and therefore it is not likely that this change will result in adverse impacts to the setting of any designated heritage assets.

Change 7-118 relates to the restringing of the existing 4ZM overhead line to the south of Walton Highway. These works will introduce additional temporary changes to the setting of two designated assets, the Grade II Listed Mill House (1305435) and Old Post Office (1171829), due to the presence of construction plant and operatives. Similarly, changes 7-56, 7-59, 7-60, 7-64, 7-66 and 7-78 relating to restringing of the existing 4ZM to the north of Walton Highway would impact the setting of the Grade II listed Shepherds Cottage (1264180). However these impacts, to both designated and non-designated heritage assets, will be temporary in nature and are unlikely to result in significant effects.

---

Water Environment For EGL 3 and EGL 4 and GtW, there will be no change to the nature or significance of adverse water environment effects as a result of the proposed changes, when compared to the design and PEIR presented at Stage 2 consultation in 2025. The proposed control and management measures detailed in the PEIR will be effective in mitigating any effects associated with the proposed changes on these aspects of the water environment.

Change 7-71 relates to the provision of Additional Environmental Mitigation areas for compensatory habitat for water vole and skylark

---

---

and other farmland birds. The latter will not result in any impacts upon the water environment as it requires changes to land management only. As with much of the land within the Section 7 draft Order Limits, land affected by the compensatory water vole habitat is within defended flood plain. Whilst temporary construction activities to create the compensatory water vole habitat will be located within Flood Zone 3, due to their scale and temporary nature, it is not likely that these works alone will result in significant effects upon flood risk receptors. Creation of water vole habitat will also impact the existing drainage network, given the presence of Internal Drainage Board (IDB) assets within this area. Engagement with the IDB to inform design development is ongoing to ensure there will be no reduction in drainage capacity. Further detail will be reported in the Water Environment ES chapters submitted in support of the EGL 3 and 4 and GtW DCO applications.

Changes 7-56, 7-59, 7-60, 7-64, 7-66, 7-78 and Change 7-118, relating to restringing of the existing 4ZM overhead lines at Walpole will also result in additional construction works within defended floodplain, when compared to those previously considered within the EGL 3 and 4 and GtW PEIRs. As with Change 7-71, it is not likely that these works alone will result in significant effects upon flood risk receptors or the water environment, due to their temporary nature and the fact that large scale intrusive works will not be required to facilitate re-stringing of the existing 4ZM overhead line.

When considering the works in Section 7 as a whole, on a precautionary basis, significant effects due to potential loss of floodplain storage and/or changes in floodplain flow conveyance were not ruled out within the GtW PEIR. However, a full assessment of effects upon flood risk receptors and the water environment will be included within the Water Environment ES chapters submitted in support of both the EGL 3 and 4 and GtW DCO applications. These assessments will be informed by ongoing engagement with the Environment Agency, IDBs and Lead Local Flood Authorities (LLFAs), along with the completed detailed flood modelling.

---

#### Landscape and Visual Amenity

For GtW, whilst from the proposed changes would introduce additional localised impacts when compared to those described in the GtW PEIR submitted at Stage 2 consultation in 2025, they would not materially change the nature and significance of the previously reported effects. For EGL 3 and EGL 4 and GtW, there is potential for changes to the assessment of landscape and visual effects presented within the PEIRs due to the proposed changes to the Order Limits. While many changes are minor or temporary, all will be fully considered and reassessed within the ES.

Change 7-71: these relocated mitigation areas are located within Landscape Character Area (LCA) D3 Terrington St John. When compared to the design information presented in the PEIRs, the inclusion of these areas will extend the construction working area further to the east. However, the delivery of compensatory habitat for skylark and other farmland birds will require changes to crop type only and will therefore not result in any additional impacts upon landscape

---

---

character. Construction of the water vole mitigation area will result in temporary, localised impacts upon landscape character due to the presence of temporary works, including plant, vehicles and site operatives. Once operational, the presence of the mitigation area will not result in any permanent impacts upon landscape character or any additional visual impacts upon the community of Walpole Parish.

For EGL 3 and EGL 4 and GtW, Change 7-71 does not change the conclusions set out in the PEIR in relation to landscape, which reported likely significant effects upon LCA D3 Terrington St John.

For Change 7-71, the delivery of compensatory habitat for skylark and other farmland birds will require changes to crop type only. These works will therefore not lead to any additional visual impacts upon the community of Walpole Parish during either construction or operation. Construction of the water vole mitigation area will result in temporary, localised visual impacts upon the Walpole community due to the presence of plant, vehicles and site operatives, however these are not anticipated to be significant. Once operational, the presence of the mitigation area will not result in any permanent impacts upon the views from the community of Walpole.

For EGL 3 and EGL 4 and GtW, Change 7-71 therefore does not change the conclusions set out in the PEIR, which when considering the entirety of works within Section 7, reported likely significant effects upon views from the Walpole Highway and West Walton community areas during both construction and operation.

Changes 7-56, 7-59, 7-60, 7-64, 7-66, 7-78 and 7-118, relating to restringing of the existing 4ZM overhead lines at Walpole, will introduce additional works within LCA D3 Terrington St John and LCA D4 Emneth, West Walton and Walsoken. The restringing area will result in temporary, localised impacts upon landscape character and communities due to the required temporary works in the area, including plant, vehicles and site operatives. Once operational, there will be no significant effects upon landscape character, as the 4ZM overhead line will be directly comparable to the existing transmission infrastructure in this area and there will be no change to the existing pylons themselves.

For EGL 3 and EGL 4 and GtW, Changes 7-56, 7-59, 7-60, 7-64, 7-66, 7-78 and Change 7-118 does not alter the conclusions set out in the PEIRs with respect to landscape, which reported likely significant effects upon LCA D3 Terrington St John during both construction and operation, and likely non-significant effects upon LCA D4 Emneth, West Walton and Walsoken during construction.

Changes 7-56, 7-59, 7-60, 7-64, 7-66, 7-78 and 7-118 will introduce additional works in proximity to the communities of West Walton and Walpole Highway. The restringing area will result in temporary, localised impacts upon views from these communities due to the presence of temporary works. Once operational, there will be no significant effects upon these communities, as the 4ZM overhead line will be directly comparable to the existing transmission infrastructure in this area and there will be no change to the existing pylons themselves.

---

---

For EGL 3 and EGL 4 and GtW, Changes 7-56, 7-59, 7-60, 7-64, 7-66, 7-78 and 7-118 does not alter the conclusions set out in the PEIRs with respect to visual amenity, which reported likely significant effects upon the Walpole Highway and West Walton communities during both construction and operation.

For EGL 3 and EGL 4, Change 7-73, together with some changes which are specific to EGL 3 and EGL 4 (see **Table 1-1**) include for the provision of or adjustments to Maintenance Access which is permanent. While individually considered minor in nature, these will be considered collectively with regards to landscape character and assessed at ES Stage with any vegetation removal requirements considered. At this stage, it is considered that, collectively, these changes may introduce new adverse effects when compared to the PEIR.

All other works associated with Changes within Section 7 are not expected to introduce any new or materially different landscape or visual effects or alter the conclusions in the PEIR presented at Stage 2 consultation in 2025 regarding their significance. This is either due to them being considered minor or be temporary in nature.

Overall, for EGL 3 and EGL 4 and GtW, the changes to the Draft Order Limits may introduce new adverse effects when compared to the PEIRs presented at Stage 2 consultation in 2025. For GtW, the proposed changes do not alter the conclusions set out in the PEIR presented at Stage 2 consultation in 2025.

---

#### Noise and Vibration

For EGL 3 and EGL 4 and GtW, there will be no change to the nature or significance of noise and vibration effects resulting from the proposed changes when compared with those described in the PEIR presented at Stage 2 consultation in 2025. Monitoring and mitigation measures identified in the designs and PEIRs will remain appropriate to manage any noise and vibration impacts associated with the projects.

Utility works, restringing of the 4ZM overhead line and the creation of the water vole mitigation area will result in temporary localised impacts during construction. However, based upon the volume of construction traffic attributable to these specific changes and the application of appropriate control measures, including Best Practicable Means, these impacts will not be of a scale that will result in any new or different significant noise and vibration effects.

---

#### Socio-economics, Recreation and Tourism

For EGL 3 and EGL 4 and GtW, there is potential for changes to the assessment of effects when compared to the designs and PEIRs presented at Stage 2 consultation in 2025 due to the proposed changes to the Order Limits.

Changes 7-56, 7-59, 7-60, 7-64, 7-66, 7-78, which relate to restringing of the existing 4ZM overhead lines at Walpole, may introduce new adverse effects on Solar Farms. Solar farms will now intersect the Order Limits for EGL 3 and EGL 4, therefore these receptors will be directly impacted and will therefore have potential for likely significant adverse effects by virtue of both potential temporary or permanent loss of land during construction.

---

For EGL 3 and EGL 4, effects on Solar Farms were not included as receptors within the PEIR, as such the changes will lead to new significant effects.

For GtW, the PEIR applied a worst-case scenario approach in relation to solar farms. Alongside the Rose and Crown Solar Farm, which was identified in the GtW PEIR, the restringing of the 4ZM overhead line (Changes 7-56, 7-59, 7-60, 7-64, 7-66, 7-78) would introduce direct impacts upon the Walpole Bank Solar Farm and Gunthorpe Road Solar Farm.

Change 7-71 will result in localised impacts during construction. However, based upon the application of appropriate control measures, including only undertaking construction working within agreed working hours, for local businesses, development land, and community facilities, these will not be of a scale that will result in any significant effects.

Overall, for EGL 3 and EGL 4 and GtW, the proposed changes may alter the conclusions set out in the PEIRs presented at Stage 2 consultation in 2025, in relation to effects on solar farms. Any changes to the assessment findings will be provided within each respective ES that will be submitted with the DCO applications for both projects.

---

Traffic and Transport (EGL 3 and EGL 4) / Traffic and Movement (GtW)

For EGL 3 and EGL 4 and GtW, the proposed changes will not result in materially different traffic and transport effects to those which were reported within the PEIRs presented at Stage 2 consultation in 2025. Works, including Restringing of the existing 4ZM overhead lines at Walpole, diversions of existing utilities, and the creation of the water vole mitigation area will result in marginal localised increases in traffic due to associated construction vehicle movements. However due to the low volume of movements associated with these changes, they are not likely to result in any additional road links requiring detailed assessment, when compared to those identified in the EGL 3 and EGL 4 and GtW PEIRs.

The users on the highway links exceeding the appropriate sensitivity threshold for potential significant effects were considered within the PEIRs and it was determined that significant effects upon users of the affected highway links could not be ruled out at that stage.

No detailed assessment has yet been undertaken to determine the magnitude of impacts upon affected road links requiring further assessment. A full traffic and movement assessment will be included within each respective ES submitted with the DCO applications.

---

Greenhouse Gas (EGL 3 and EGL 4) / Climate Change (GtW)

For EGL 3 and EGL 4 and GtW, there will be no changes to the nature or significance of Greenhouse Gas effects as a result of the proposed changes, when compared to the design and PEIR presented at Stage 2 consultation in 2025.

At the time of writing the PEIRs, quantitative assessment of Greenhouse Gas (GHG) emissions and an assessment of in-combination climate change impacts (ICCI) was unable to be undertaken due to the level of design information available. This remains the case as of the launch of the targeted consultation. The proposed changes will be assessed alongside all relevant elements of

---

the full GHG emissions and ICCI assessments, which will be included within the relevant chapter within each respective ES submitted with the DCO applications for EGL 3 and EGL 4 and GtW.

As per the EGL 3 and EGL 4 September 2024 Scoping Opinion and Grimsby to Walpole September 2024 Scoping Opinion, climate change resilience assessments have been scoped out of further assessment provided all design and control measures are demonstrably secured.

---

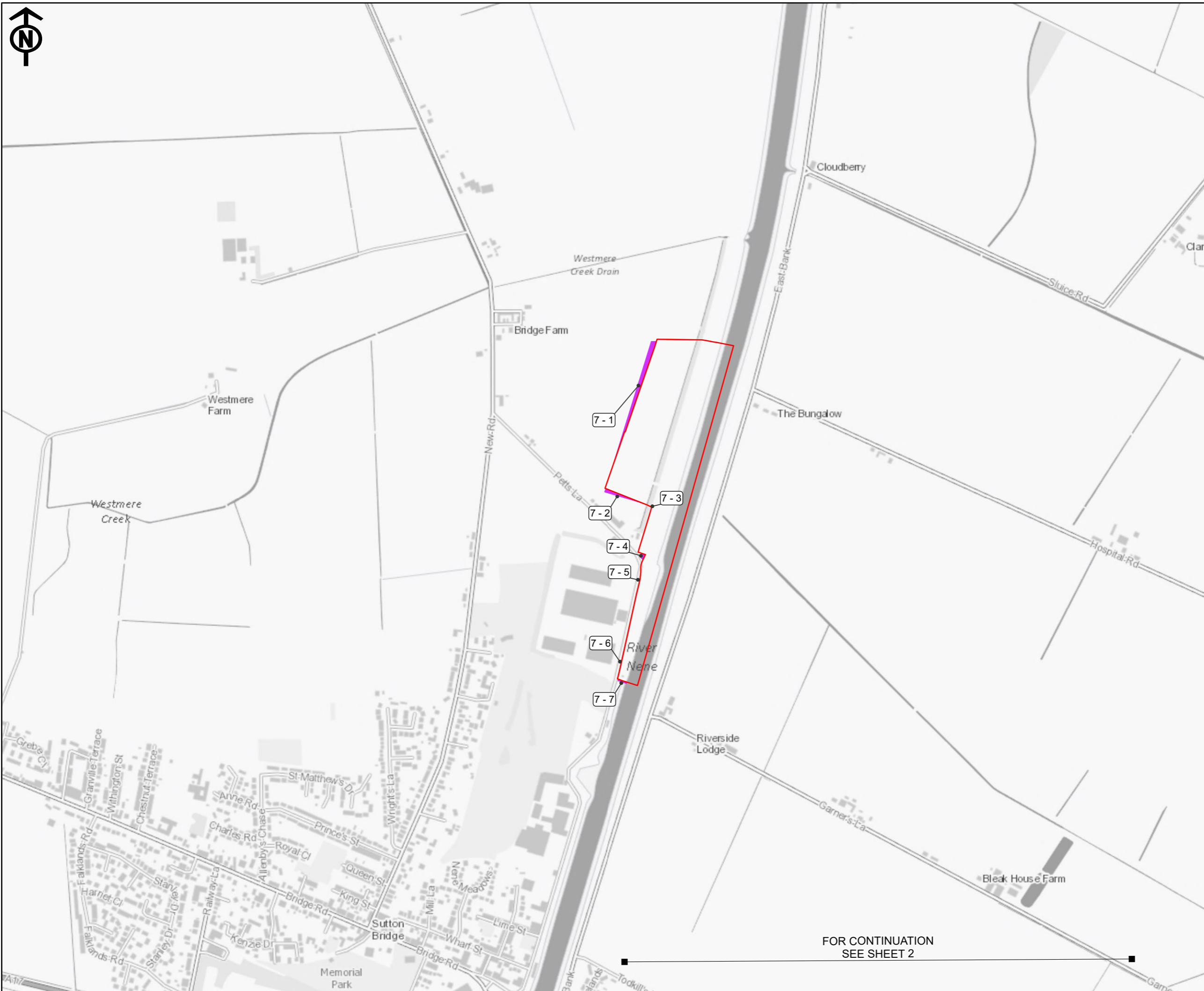
## 1.5 Conclusion

- 1.5.1 For EGL 3 and EGL 4, it is anticipated that the proposed changes will result in an increase in magnitude of change associated with some previously identified environmental impacts, and will lead to the introduction of some new adverse environmental effects, that were not anticipated or assessed within the EGL 3 and EGL 4 PEIR and presented at Stage 2 consultation in 2025.
- 1.5.2 These adverse environmental effects will be confined to a small number of receptors located within, or directly adjacent to, areas where the Order Limits have been expanded.
- 1.5.3 Due to the scale and nature of these new adverse effects, it is considered that the changes do not materially alter the conclusions of the PEIRs as a whole, with respect to likely significant effects within Section 7.
- 1.5.4 For GtW, it is anticipated that the proposed changes will lead to the introduction of some additional, localised adverse environmental impacts, that were not anticipated or assessed within the GtW PEIR and presented at Stage 2 consultation in 2025. Specifically, these relate to receptors within or adjacent to the changes to the Draft Order Limits. However, these localised impacts are not likely to result in new or materially different significant environmental effects within Section 7, to those reported within the GtW PEIR. The water vole and skylark and other farmland bird mitigation area is however likely to avoid significant effects upon populations of these species in Section 7, which were not ruled out within the previously published GtW PEIR.
- 1.5.5 A targeted approach to further consultation is therefore appropriate and is taking place between 09 April 2026 and 11 May 2026, the purpose of which is to provide an opportunity for stakeholders and members of the public to understand the changes and share their views. Responses to this consultation will be taken into account in the preparation of both the EGL 3 and EGL 4 and GtW DCO applications.
- 1.5.6 If the proposed changes are taken forward, the baseline information (and environmental surveys) and assessment associated with these changes would be provided in the Environmental Statement (ES).

# References

- Ref 1-1 Department for Levelling Up, Housing and Communities (DLUHC) 2024, *Planning Act 2008: Pre-application stage for Nationally Significant Infrastructure Projects*, DLUHC, London, published 30 April 2024, available on GOV.UK.
- Ref 1-2 UK Government (2008). Planning Act 2008.
- Ref 1-3 National Grid (2025) Preliminary Environmental Information Report (PEIR), Volume 1, Part 1, Chapter 5: PEIR Approach and Methodology. Available at <https://www.nationalgrid.com/sites/default/files/documents/2025-05/PEIR%20Volume%201%20Part%201%20Chapter%205%20PEIR%20Approach%20and%20Methodology-%20WEB.pdf>
- Ref 1-4 National Grid (2025) Preliminary Environmental Information Report (PEIR), Volume 2, Part A: Introduction and Overview – Chapter 4: Approach to Preliminary Environmental Information. Available at: <https://www.nationalgrid.com/document/560576/download>
- Ref 1-5 National Grid (2025) Preliminary Environmental Information Report (PEIR), Volume 1, Part 1, Chapter 4: Description of the Projects. Available at <https://www.nationalgrid.com/sites/default/files/documents/2025-05/PEIR%20Volume%201%20Part%201%20Chapter%204%20Description%20of%20the%20Projects-%20WEB.pdf>
- Ref 1-6 National Grid (2025) Preliminary Environmental Information Report (PEIR), Volume 2, Part A, Chapter 5: Project Description. Available at <https://www.nationalgrid.com/document/560581/download>

# Appendix A Detailed Maps – Section 7

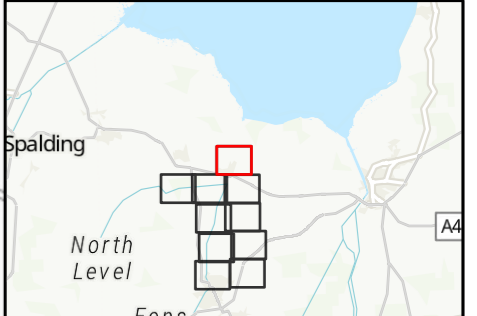


- Legend**
- Order Limits from Summer 2025
  - Additional Areas for Targeted Consultation 2026
  - EGL 3/4 and GtW Additional Areas for Targeted Consultation 2026
  - Sheet Outline

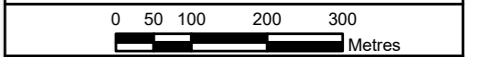
**Notes**

This drawing is scaled at paper size A3, therefore any prints taken at smaller sizes will affect accuracy of the measurement units and should not be scaled against.

Additional Copyright - Inset: Sources: Esri, TomTom, Garmin, FAO, NOAA, USGS, © OpenStreetMap contributors, and the GIS User Community. Contains OS data © Crown Copyright



Coordinate System: British National Grid  
 Sheet X Centroid Coordinate: 548433.1E Sheet Y Centroid Coordinate: 322510.99N



BACKGROUND MAPPING INFORMATION HAS BEEN REPRODUCED FROM THE ORDNANCE SURVEY BY PERMISSION OF ORDNANCE SURVEY OF THE CONTROLLER OF HIS MAJESTY'S STATIONERY OFFICE. © CROWN COPYRIGHT AND DATABASE RIGHTS 2025 ORDNANCE SURVEY 0040171974.

1	MAR 2026	FIRST ISSUE	SB	AF	JB
Issue	Date	Remarks	Drawn	Checked	Approved

Figure Number: -

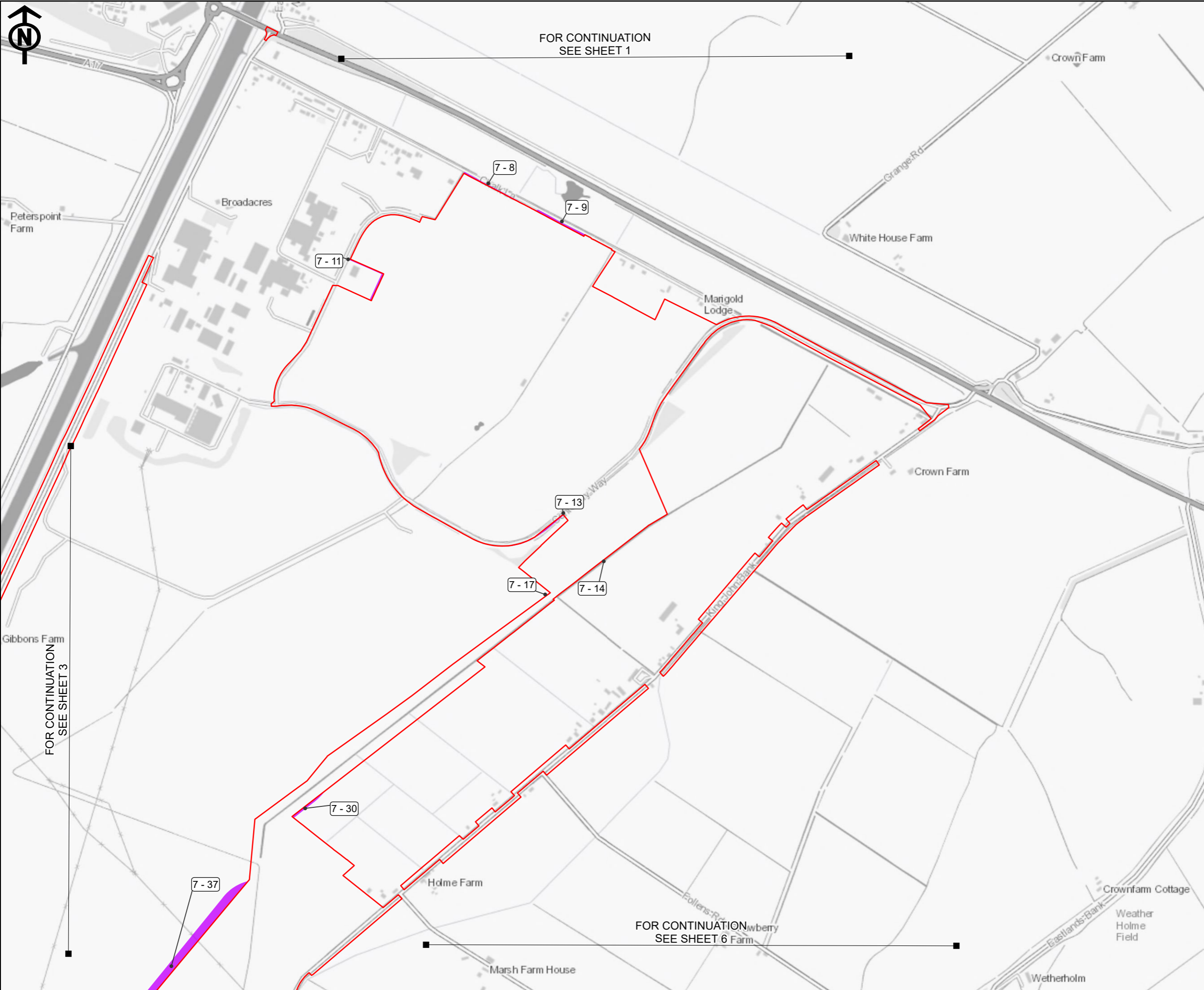
Title: EASTERN GREEN LINK (EGL) 3 & EGL 4 Additional Areas for Targeted Consultation 2026 - Detailed Plans Section 7 SHEET 1 of 10



Drawing Reference: EGL-WSP-CONS-XX-DR-Y-162

Scale	Sheet Size	Sheet	Issue
1:10,000	A3	1 of 10	1

FOR CONTINUATION  
SEE SHEET 2



FOR CONTINUATION  
SEE SHEET 1

FOR CONTINUATION  
SEE SHEET 3

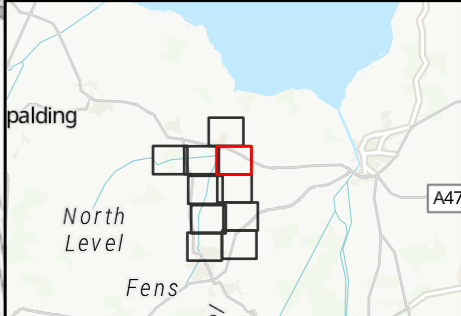
FOR CONTINUATION  
SEE SHEET 6

- Legend**
- Order Limits from Summer 2025
  - Additional Areas for Targeted Consultation 2026
  - EGL 3/4 and GtW Additional Areas for Targeted Consultation 2026
  - Sheet Outline

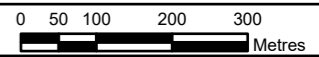
**Notes**

This drawing is scaled at paper size A3, therefore any prints taken at smaller sizes will affect accuracy of the measurement units and should not be scaled against.

Additional Copyright - Inset: Sources: Esri, TomTom, Garmin, FAO, NOAA, USGS, © OpenStreetMap contributors, and the GIS User Community, Contains OS data © Crown Copyright



Coordinate System: British National Grid  
Sheet X Centroid Coordinate: 549230.65E Sheet Y Centroid Coordinate: 319680.9N



BACKGROUND MAPPING INFORMATION HAS BEEN REPRODUCED FROM THE ORDNANCE SURVEY BY PERMISSION OF ORDNANCE SURVEY OF THE CONTROLLER OF HIS MAJESTY'S STATIONERY OFFICE. © CROWN COPYRIGHT AND DATABASE RIGHTS 2025 ORDNANCE SURVEY 0040171974.

1	MAR 2026	FIRST ISSUE	SB	AF	JB
Issue	Date	Remarks	Drawn	Checked	Approved

Figure Number -

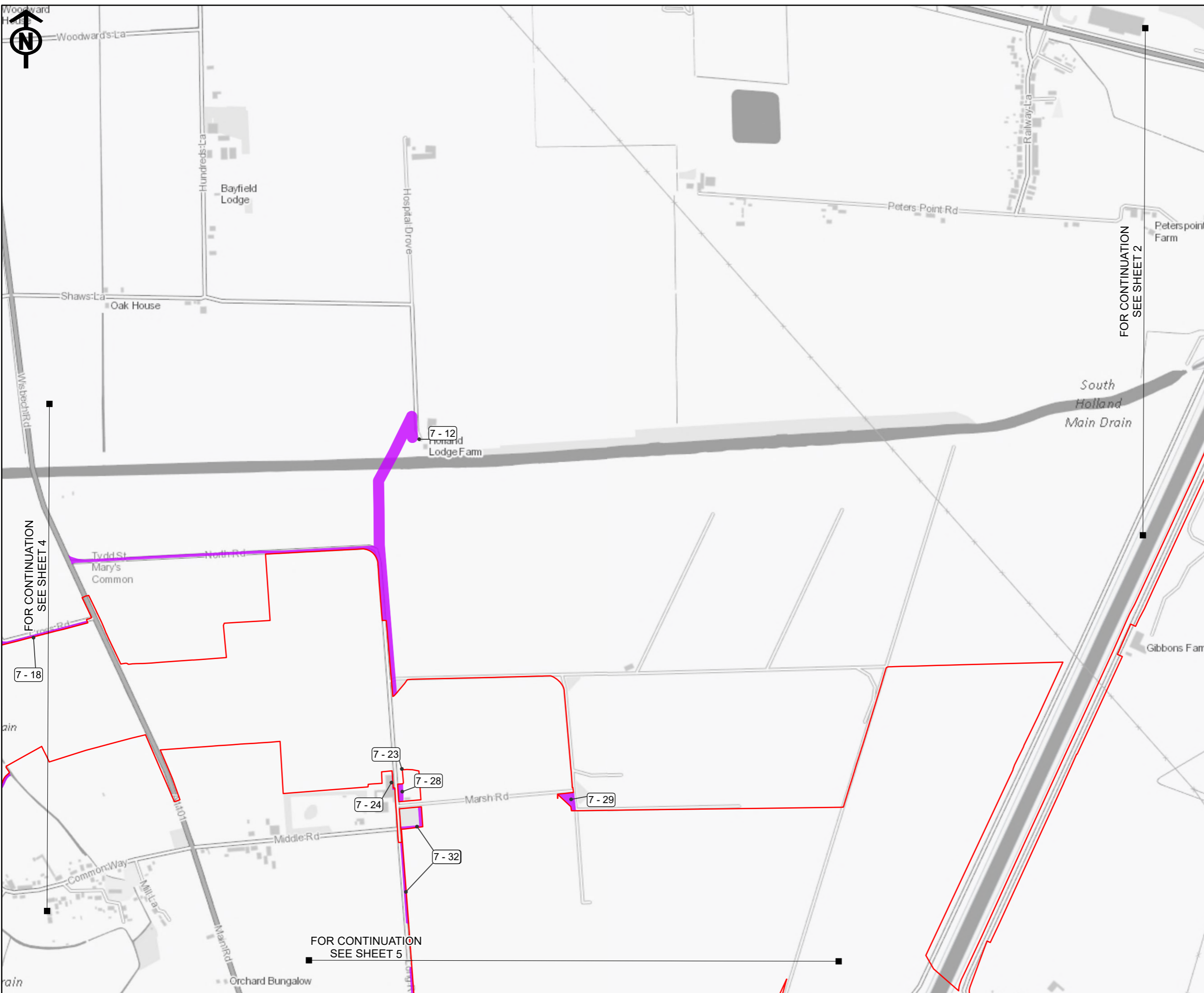
**Title**

EASTERN GREEN LINK (EGL) 3 & EGL 4  
Additional Areas for Targeted  
Consultation 2026 - Detailed Plans  
Section 7  
SHEET 2 of 10



**Drawing Reference**  
EGL-WSP-CONS-XX-DR-Y-162

<b>Scale</b>	<b>Sheet Size</b>	<b>Sheet</b>	<b>Issue</b>
1:10,000	A3	2 of 10	1

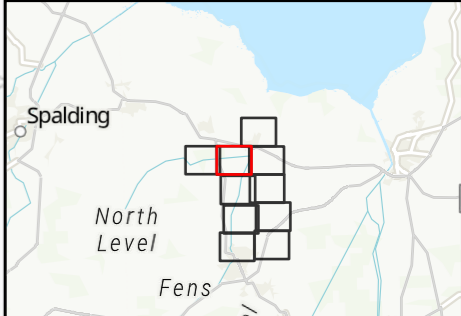


- Legend**
- Order Limits from Summer 2025
  - Additional Areas for Targeted Consultation 2026
  - EGL 3/4 and GtW Additional Areas for Targeted Consultation 2026
  - Sheet Outline

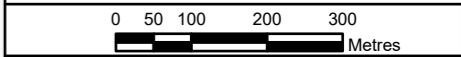
**Notes**

This drawing is scaled at paper size A3, therefore any prints taken at smaller sizes will affect accuracy of the measurement units and should not be scaled against.

Additional Copyright - Inset: Sources: Esri, TomTom, Garmin, FAO, NOAA, USGS, © OpenStreetMap contributors, and the GIS User Community. Contains OS data © Crown Copyright



Coordinate System: British National Grid  
 Sheet X Centroid Coordinate: 548002.27E Sheet Y Centroid Coordinate: 319695.95N



BACKGROUND MAPPING INFORMATION HAS BEEN REPRODUCED FROM THE ORDNANCE SURVEY BY PERMISSION OF ORDNANCE SURVEY OF THE CONTROLLER OF HIS MAJESTY'S STATIONERY OFFICE. © CROWN COPYRIGHT AND DATABASE RIGHTS 2025 ORDNANCE SURVEY 0040171974.

Issue	Date	Remarks	Drawn	Checked	Approved
1	MAR 2026	FIRST ISSUE	SB	AF	JB

Figure Number: -

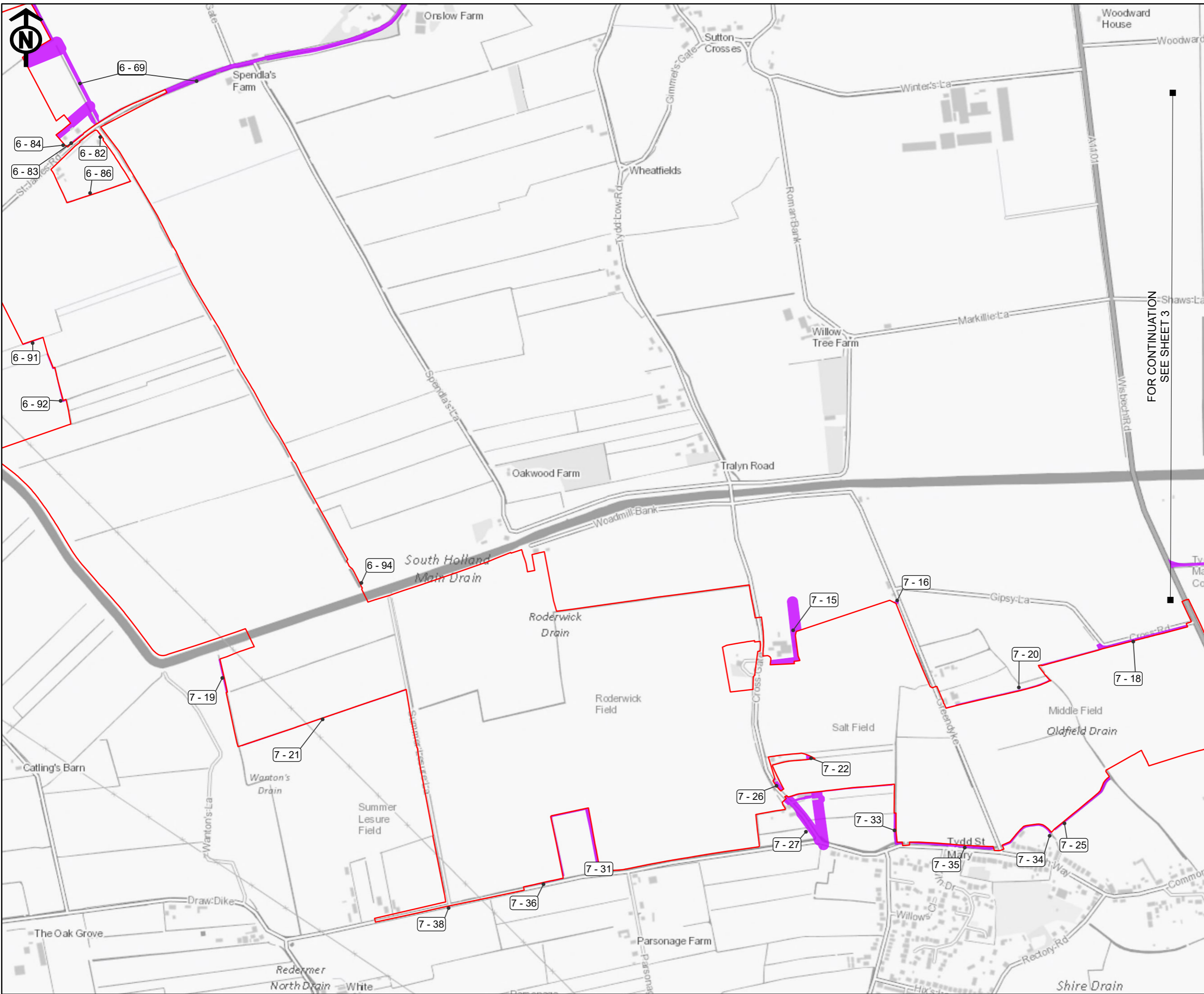
**Title**

EASTERN GREEN LINK (EGL) 3 & EGL 4  
 Additional Areas for Targeted  
 Consultation 2026 - Detailed Plans  
 Section 7  
 SHEET 3 of 10



**Drawing Reference**  
 EGL-WSP-CONS-XX-DR-Y-162

Scale	Sheet Size	Sheet	Issue
1:10,000	A3	3 of 10	1



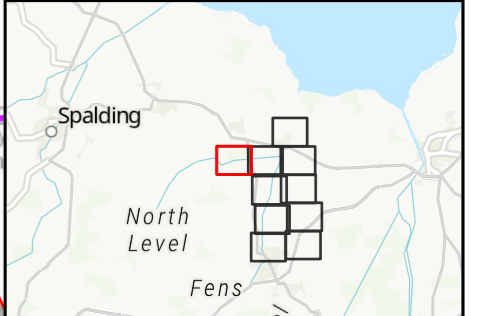
**Legend**

- Order Limits from Summer 2025
- Additional Areas for Targeted Consultation 2026
- EGL 3/4 and GtW Additional Areas for Targeted Consultation 2026
- Sheet Cutline

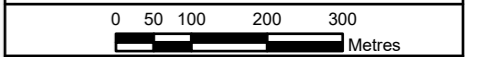
**Notes**

This drawing is scaled at paper size A3, therefore any prints taken at smaller sizes will affect accuracy of the measurement units and should not be scaled against.

Additional Copyright - Inset: Sources: Esri, TomTom, Garmin, FAO, NOAA, USGS, © OpenStreetMap contributors, and the GIS User Community. Contains OS data © Crown Copyright



Coordinate System: British National Grid  
 Sheet X Centroid Coordinate: 542894.28E Sheet Y Centroid Coordinate: 319710.99N



BACKGROUND MAPPING INFORMATION HAS BEEN REPRODUCED FROM THE ORDNANCE SURVEY BY PERMISSION OF ORDNANCE SURVEY OF THE CONTROLLER OF HIS MAJESTY'S STATIONERY OFFICE. © CROWN COPYRIGHT AND DATABASE RIGHTS 2025 ORDNANCE SURVEY 0040171974.

1	MAR 2026	FIRST ISSUE	SB	AF	JB
Issue	Date	Remarks	Drawn	Checked	Approved

Figure Number -

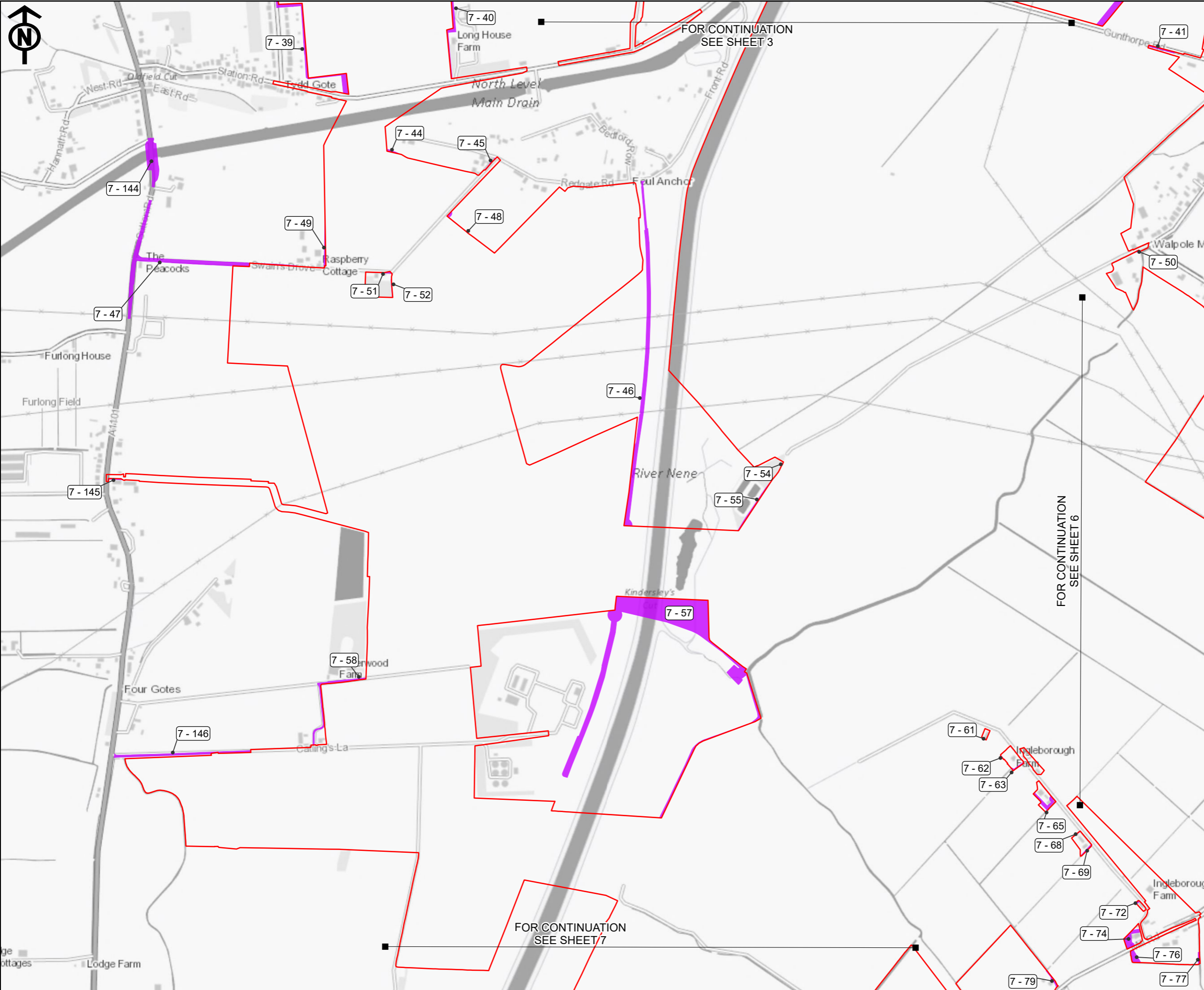
**Title**

EASTERN GREEN LINK (EGL) 3 & EGL 4  
 Additional Areas for Targeted  
 Consultation 2026 - Detailed Plans  
 Section 7  
 SHEET 4 of 10

**nationalgrid**

Drawing Reference EGL-WSP-CONS-XX-DR-Y-162

Scale	Sheet Size	Sheet	Issue
1:10,000	A3	4 of 10	1

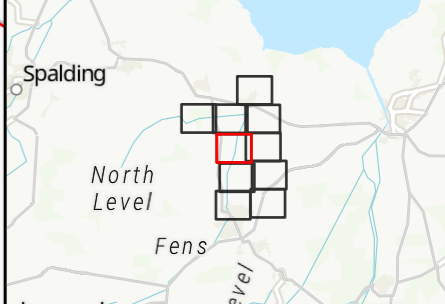


- Legend**
- Order Limits from Summer 2025
  - Additional Areas for Targeted Consultation 2026
  - EGL 3/4 and GtW Additional Areas for Targeted Consultation 2026
  - Sheet Outline

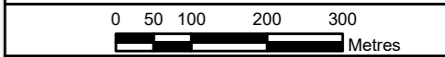
**Notes**

This drawing is scaled at paper size A3, therefore any prints taken at smaller sizes will affect accuracy of the measurement units and should not be scaled against.

Additional Copyright - Inset: Sources: Esri, TomTom, Garmin, FAO, NOAA, USGS, © OpenStreetMap contributors, and the GIS User Community. Contains OS data © Crown Copyright



Coordinate System: British National Grid  
 Sheet X Centroid Coordinate: 546392.85E Sheet Y Centroid Coordinate: 316756.53N



BACKGROUND MAPPING INFORMATION HAS BEEN REPRODUCED FROM THE ORDNANCE SURVEY BY PERMISSION OF ORDNANCE SURVEY OF THE CONTROLLER OF HIS MAJESTY'S STATIONERY OFFICE. © CROWN COPYRIGHT AND DATABASE RIGHTS 2025 ORDNANCE SURVEY 0040171974.

1	MAR 2026	FIRST ISSUE	SB	AF	JB
Issue	Date	Remarks	Drawn	Checked	Approved

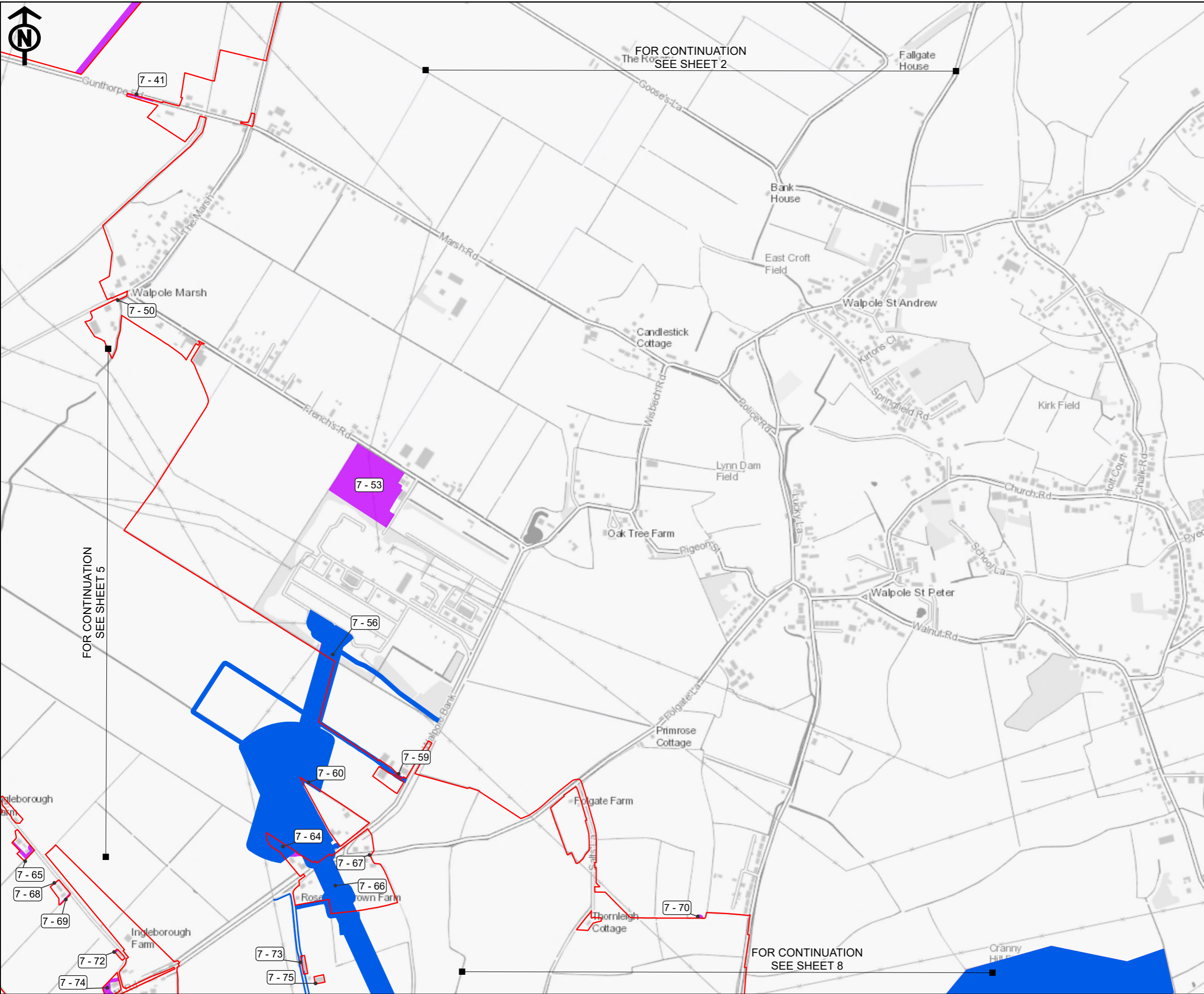
Figure Number: -

Title: EASTERN GREEN LINK (EGL) 3 & EGL 4 Additional Areas for Targeted Consultation 2026 - Detailed Plans Section 7 SHEET 5 of 10



Drawing Reference: EGL-WSP-CONS-XX-DR-Y-162

Scale	Sheet Size	Sheet	Issue
1:10,000	A3	5 of 10	1

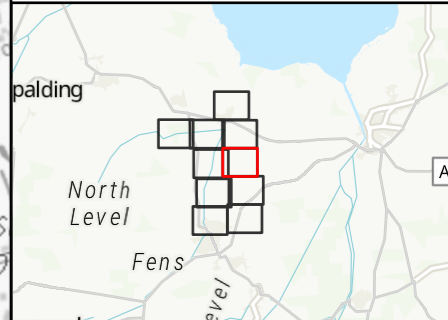


- Legend**
- Order Limits from Summer 2025
  - Additional Areas for Targeted Consultation 2026
  - EGL 3/4 and GtW Additional Areas for Targeted Consultation 2026
  - Sheet Outline

**Notes**

This drawing is scaled at paper size A3, therefore any prints taken at smaller sizes will affect accuracy of the measurement units and should not be scaled against.

Additional Copyright - Inset: Sources: Esri, TomTom, Garmin, FAO, NOAA, USGS, © OpenStreetMap contributors, and the GIS User Community. Contains OS data © Crown Copyright



Coordinate System: British National Grid  
 Sheet X Centroid Coordinate: 549275.79E Sheet Y Centroid Coordinate: 316889.78N



BACKGROUND MAPPING INFORMATION HAS BEEN REPRODUCED FROM THE ORDNANCE SURVEY BY PERMISSION OF ORDNANCE SURVEY OF THE CONTROLLER OF HIS MAJESTY'S STATIONERY OFFICE. © CROWN COPYRIGHT AND DATABASE RIGHTS 2025 ORDNANCE SURVEY 0040171974.

1	MAR 2026	FIRST ISSUE	SB	AF	JB
Issue	Date	Remarks	Drawn	Checked	Approved

Figure Number: -

Title

**EASTERN GREEN LINK (EGL) 3 & EGL 4  
 Additional Areas for Targeted  
 Consultation 2026 - Detailed Plans  
 Section 7  
 SHEET 6 of 10**

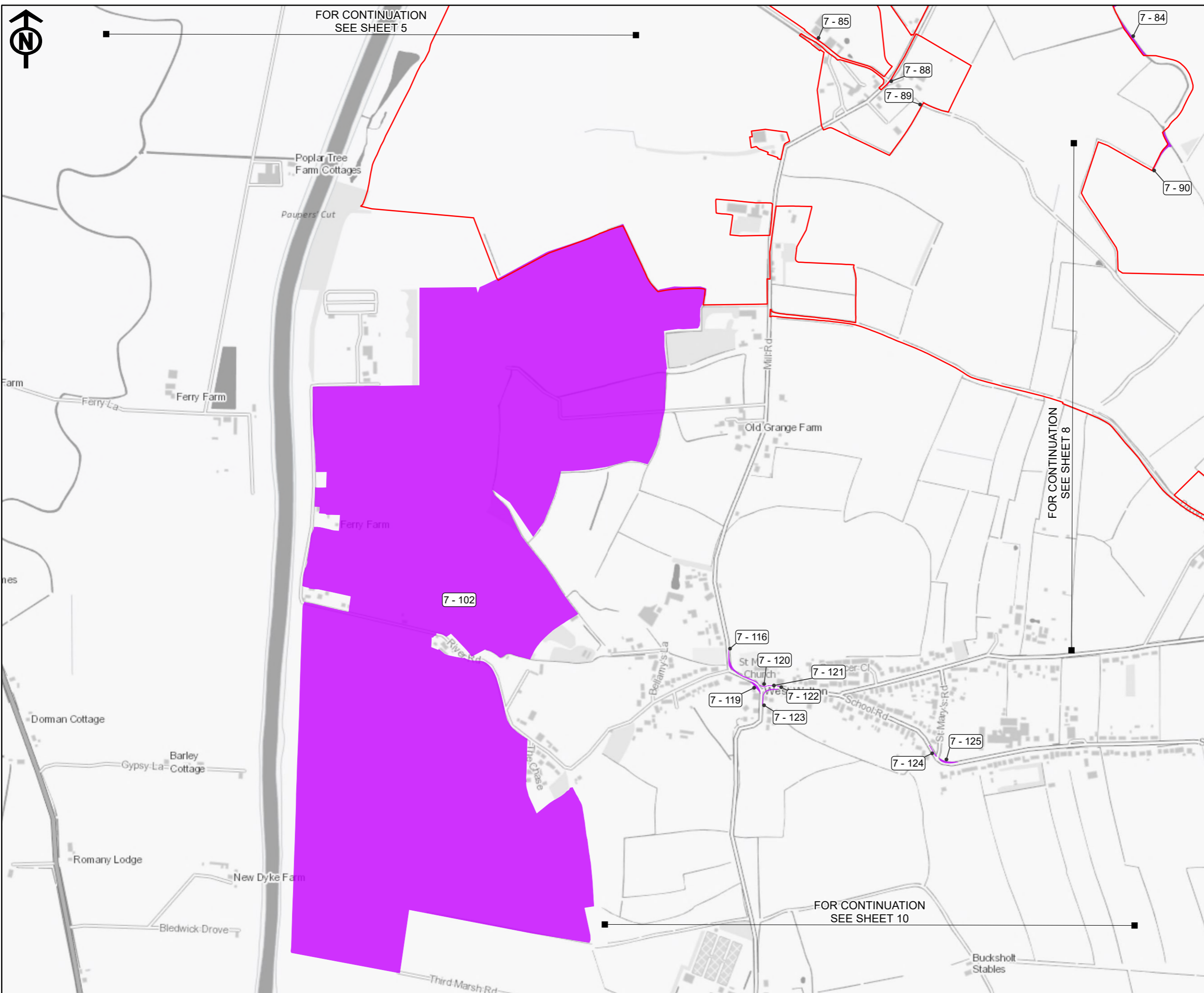
**nationalgrid**

Drawing Reference: EGL-WSP-CONS-XX-DR-Y-162

Scale	Sheet Size	Sheet	Issue
1:10,000	A3	6 of 10	1



FOR CONTINUATION  
SEE SHEET 5

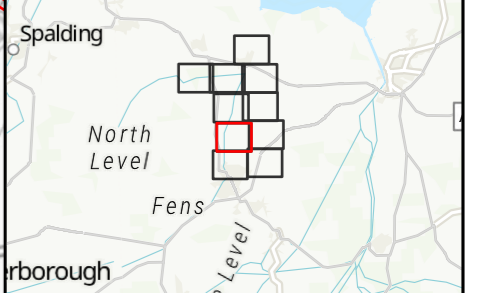


- Legend**
- Order Limits from Summer 2025
  - Additional Areas for Targeted Consultation 2026
  - EGL 3/4 and GtW Additional Areas for Targeted Consultation 2026
  - Sheet Outline

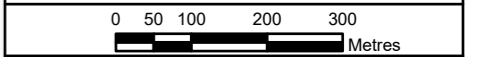
**Notes**

This drawing is scaled at paper size A3, therefore any prints taken at smaller sizes will affect accuracy of the measurement units and should not be scaled against.

Additional Copyright - Inset: Sources: Esri, TomTom, Garmin, FAO, NOAA, USGS, © OpenStreetMap contributors, and the GIS User Community. Contains OS data © Crown Copyright



Coordinate System: British National Grid  
 Sheet X Centroid Coordinate: 546686.16E Sheet Y Centroid Coordinate: 313836.36N



BACKGROUND MAPPING INFORMATION HAS BEEN REPRODUCED FROM THE ORDNANCE SURVEY BY PERMISSION OF ORDNANCE SURVEY OF THE CONTROLLER OF HIS MAJESTY'S STATIONERY OFFICE. © CROWN COPYRIGHT AND DATABASE RIGHTS 2025 ORDNANCE SURVEY 0040171974.

1	MAR 2026	FIRST ISSUE	SB	AF	JB
Issue	Date	Remarks	Drawn	Checked	Approved

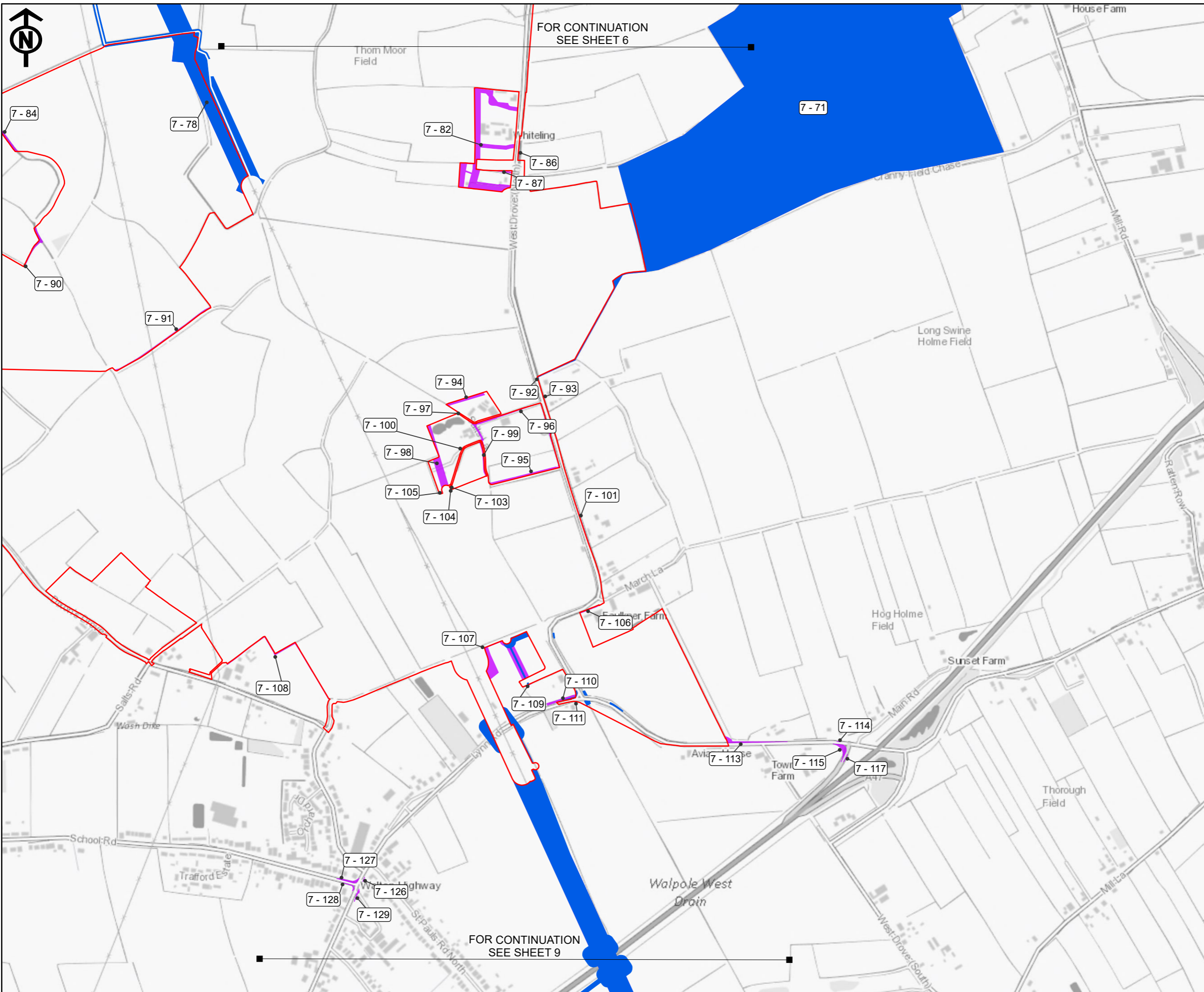
Figure Number: -

Title: EASTERN GREEN LINK (EGL) 3 & EGL 4 Additional Areas for Targeted Consultation 2026 - Detailed Plans Section 7 SHEET 7 of 10



Drawing Reference: EGL-WSP-CONS-XX-DR-Y-162

Scale	Sheet Size	Sheet	Issue
1:10,000	A3	7 of 10	1

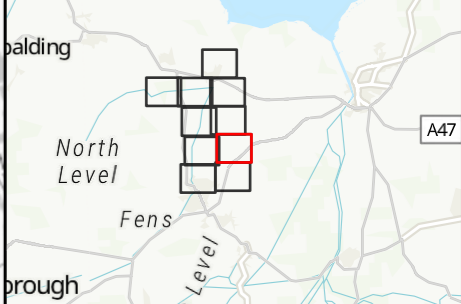


- Legend**
- Order Limits from Summer 2025
  - Additional Areas for Targeted Consultation 2026
  - EGL 3/4 and GtW Additional Areas for Targeted Consultation 2026
  - Sheet Outline

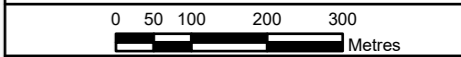
**Notes**

This drawing is scaled at paper size A3, therefore any prints taken at smaller sizes will affect accuracy of the measurement units and should not be scaled against.

Additional Copyright - Inset: Sources: Esri, TomTom, Garmin, FAO, NOAA, USGS, © OpenStreetMap contributors, and the GIS User Community. Contains OS data © Crown Copyright



Coordinate System: British National Grid  
 Sheet X Centroid Coordinate: 549875.44E Sheet Y Centroid Coordinate: 314110.99N



BACKGROUND MAPPING INFORMATION HAS BEEN REPRODUCED FROM THE ORDNANCE SURVEY BY PERMISSION OF ORDNANCE SURVEY OF THE CONTROLLER OF HIS MAJESTY'S STATIONERY OFFICE. © CROWN COPYRIGHT AND DATABASE RIGHTS 2025 ORDNANCE SURVEY 0040171974.

1	MAR 2026	FIRST ISSUE	SB	AF	JB
Issue	Date	Remarks	Drawn	Checked	Approved

Figure Number -

Title

**EASTERN GREEN LINK (EGL) 3 & EGL 4  
 Additional Areas for Targeted  
 Consultation 2026 - Detailed Plans  
 Section 7  
 SHEET 8 of 10**



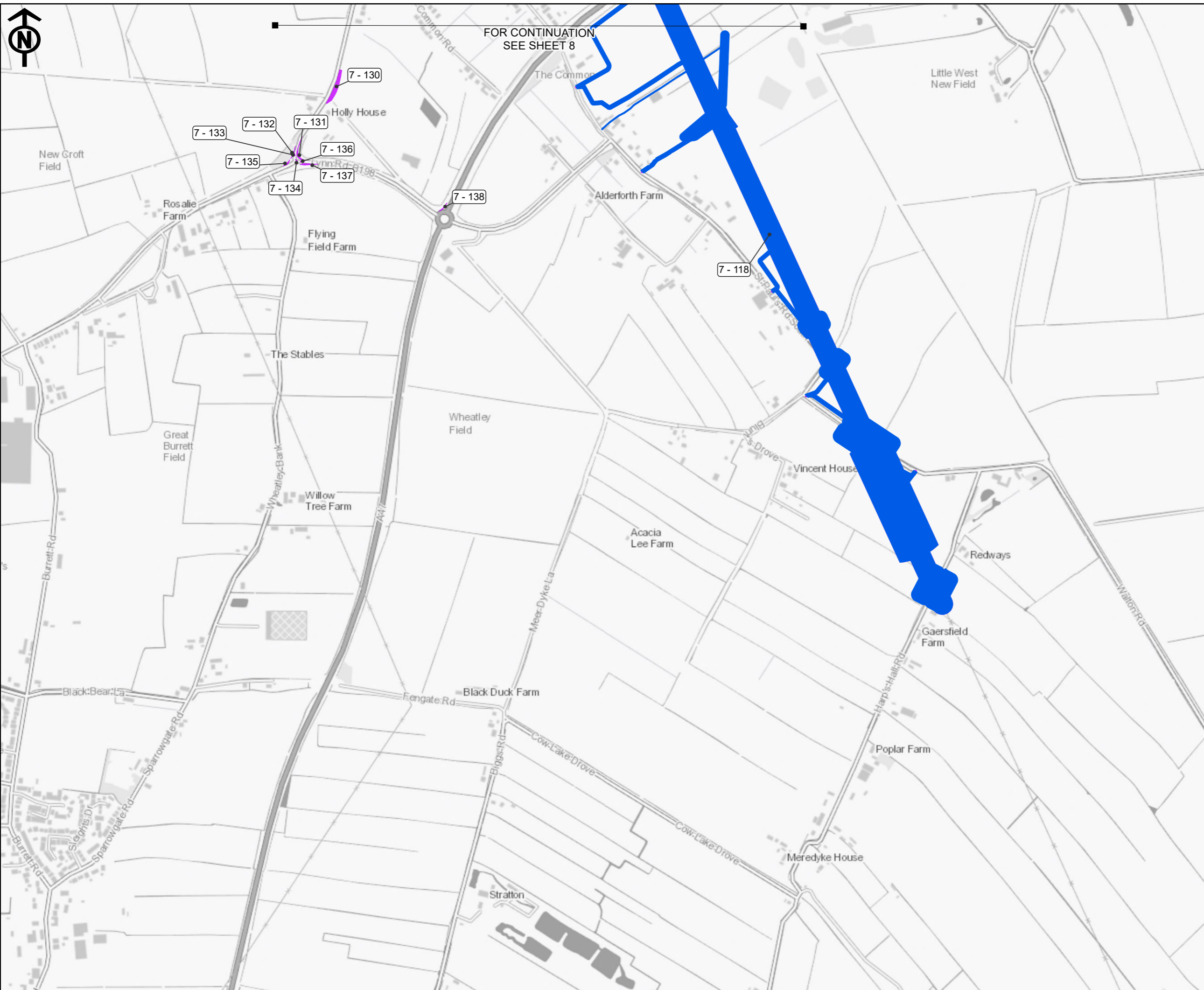
Drawing Reference EGL-WSP-CONS-XX-DR-Y-162

Scale	Sheet Size	Sheet	Issue
1:10,000	A3	8 of 10	1



FOR CONTINUATION  
SEE SHEET 8

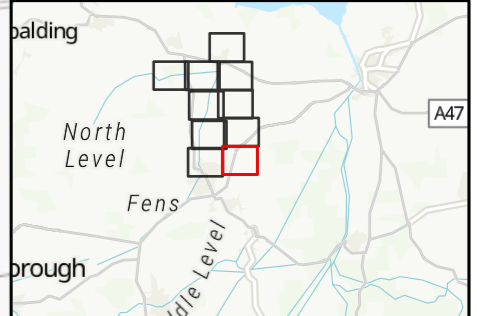
- Legend**
- Order Limits from Summer 2025
  - Additional Areas for Targeted Consultation 2026
  - EGL 3/4 and GtW Additional Areas for Targeted Consultation 2026
  - Sheet Cutline



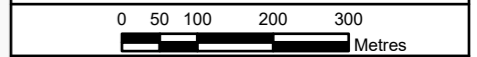
**Notes**

This drawing is scaled at paper size A3, therefore any prints taken at smaller sizes will affect accuracy of the measurement units and should not be scaled against.

Additional Copyright - Inset: Sources: Esri, TomTom, Garmin, FAO, NOAA, USGS, © OpenStreetMap contributors, and the GIS User Community. Contains OS data © Crown Copyright



Coordinate System: British National Grid  
 Sheet X Centroid Coordinate: 549742.28E Sheet Y Centroid Coordinate: 311310.99N



BACKGROUND MAPPING INFORMATION HAS BEEN REPRODUCED FROM THE ORDNANCE SURVEY BY PERMISSION OF ORDNANCE SURVEY OF THE CONTROLLER OF HIS MAJESTY'S STATIONERY OFFICE. © CROWN COPYRIGHT AND DATABASE RIGHTS 2025 ORDNANCE SURVEY 0040171974.

1	MAR 2026	FIRST ISSUE	SB	AF	JB
Issue	Date	Remarks	Drawn	Checked	Approved

Figure Number: -

**Title**

EASTERN GREEN LINK (EGL) 3 & EGL 4  
 Additional Areas for Targeted  
 Consultation 2026 - Detailed Plans  
 Section 7  
 SHEET 9 of 10







Drawing Reference: EGL-WSP-CONS-XX-DR-Y-162

Scale	Sheet Size	Sheet	Issue
1:10,000	A3	9 of 10	1



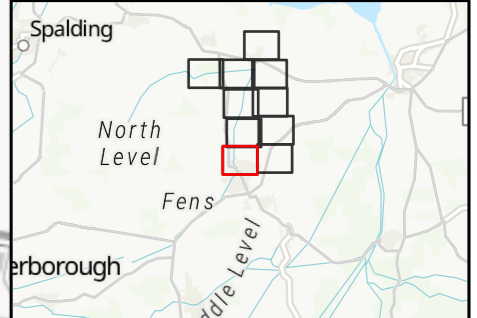
FOR CONTINUATION  
SEE SHEET 7

- Legend**
-  Order Limits from Summer 2025
  -  Additional Areas for Targeted Consultation 2026
  -  EGL 3/4 and GtW Additional Areas for Targeted Consultation 2026
  -  Sheet Outline

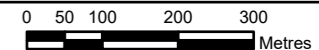
**Notes**

This drawing is scaled at paper size A3, therefore any prints taken at smaller sizes will affect accuracy of the measurement units and should not be scaled against.

Additional Copyright - Inset: Sources: Esri, TomTom, Garmin, FAO, NOAA, USGS, © OpenStreetMap contributors, and the GIS User Community. Contains OS data © Crown Copyright



Coordinate System: British National Grid  
Sheet X Centroid Coordinate: 546301.64E Sheet Y Centroid Coordinate: 311119.58N



BACKGROUND MAPPING INFORMATION HAS BEEN REPRODUCED FROM THE ORDNANCE SURVEY BY PERMISSION OF ORDNANCE SURVEY OF THE CONTROLLER OF HIS MAJESTY'S STATIONERY OFFICE. © CROWN COPYRIGHT AND DATABASE RIGHTS 2025 ORDNANCE SURVEY 0040171974.

1	MAR 2026	FIRST ISSUE	SB	AF	JB
Issue	Date	Remarks	Drawn	Checked	Approved

Figure Number: -

**Title**

EASTERN GREEN LINK (EGL) 3 & EGL 4  
Additional Areas for Targeted  
Consultation 2026 - Detailed Plans  
Section 7  
SHEET 10 of 10



**Drawing Reference**  
EGL-WSP-CONS-XX-DR-Y-162

<b>Scale</b>	<b>Sheet Size</b>	<b>Sheet</b>	<b>Issue</b>
1:10,000	A3	10 of 10	1



## Appendix B Table of Changes for EGL 3 and EGL 4 only – Section 7

Change Reference	Description of Change
7 - 1	Construction compounds and connections
7 - 2	Construction compounds and connections
7 - 3	Construction access
7 - 4	Construction access
7 - 5	Construction access
7 - 6	Construction access
7 - 7	Construction access
7 - 8	Construction compounds and connections
7 - 9	Construction compounds and connections
7 - 10	Change Reference unused
7 - 11	Construction compounds and connections
7 - 12	Diversions of existing utilities, Road works and Drainage infrastructure
7 - 13	Road works
7 - 14	Construction access
7 - 15	Diversions of existing utilities and Drainage infrastructure
7 - 16	Diversions of existing utilities and Drainage infrastructure
7 - 17	Construction access
7 - 18	Drainage infrastructure
7 - 19	Drainage infrastructure
7 - 20	Drainage infrastructure

Change Reference	Description of Change
7 - 21	Drainage infrastructure
7 - 22	Diversions of existing utilities and Drainage infrastructure
7 - 23	Diversions of existing utilities and Drainage infrastructure
7 - 24	Diversions of existing utilities and Drainage infrastructure
7 - 25	Drainage infrastructure
7 - 26	Diversions of existing utilities and Drainage infrastructure
7 - 27	Diversions of existing utilities and Drainage infrastructure
7 - 28	Diversions of existing utilities
7 - 29	Drainage infrastructure
7 - 30	Construction access
7 - 31	Drainage infrastructure
7 - 32	Drainage infrastructure
7 - 33	Drainage infrastructure
7 - 34	Drainage infrastructure
7 - 35	Drainage infrastructure
7 - 36	Drainage infrastructure
7 - 37	Construction access
7 - 38	Maintenance access
7 - 39	Drainage infrastructure
7 - 40	Drainage infrastructure

<b>Change Reference</b>	<b>Description of Change</b>
7 - 41	Road works
7 - 44	Drainage infrastructure
7 - 45	Diversions of existing utilities and Maintenance access
7 - 46	Diversions of existing utilities
7 - 47	Diversions of existing utilities, Road works and Maintenance access
7 - 48	Diversions of existing utilities and Drainage infrastructure
7 - 49	Diversions of existing utilities, Road works and Drainage infrastructure
7 - 50	Maintenance access
7 - 51	Diversions of existing utilities, Road works and Drainage infrastructure
7 - 52	Drainage infrastructure
7 - 53	Diversions of existing utilities
7 - 54	Maintenance access
7 - 55	Maintenance access
7 - 57	Diversions of existing utilities and Drainage infrastructure
7 - 58	Maintenance access
7 - 61	Drainage infrastructure
7 - 62	Drainage infrastructure
7 - 63	Diversions of existing utilities, Maintenance access and Drainage infrastructure
7 - 65	Diversions of existing utilities, Maintenance

<b>Change Reference</b>	<b>Description of Change</b>
	access and Drainage infrastructure
7 - 67	Maintenance access
7 - 68	Diversions of existing utilities, Maintenance access and Drainage infrastructure
7 - 69	Diversions of existing utilities, Maintenance access and Drainage infrastructure
7 - 70	Diversions of existing utilities
7 - 71	Drainage infrastructure and Construction compounds and connections
7 - 72	Diversions of existing utilities and Drainage infrastructure
7 - 74	Diversions of existing utilities, Maintenance access and Drainage infrastructure
7 - 75	Drainage infrastructure
7 - 76	Diversions of existing utilities and Drainage infrastructure
7 - 77	Drainage infrastructure
7 - 79	Diversions of existing utilities, Maintenance access and Drainage infrastructure
7 - 82	Diversions of existing utilities, Maintenance access, Drainage infrastructure, and Construction compounds and connections
7 - 83	Drainage infrastructure
7 - 84	Drainage infrastructure

<b>Change Reference</b>	<b>Description of Change</b>
7 - 85	Diversions of existing utilities
7 - 86	Diversions of existing utilities
7 - 87	Maintenance access
7 - 88	Diversions of existing utilities and Maintenance access
7 - 89	Maintenance access
7 - 90	Drainage infrastructure
7 - 91	Drainage infrastructure
7 - 93	Diversions of existing utilities
7 - 94	Diversions of existing utilities
7 - 95	Diversions of existing utilities and Road works
7 - 96	Diversions of existing utilities
7 - 97	Diversions of existing utilities
7 - 98	Diversions of existing utilities
7 - 99	Diversions of existing utilities
7 - 100	Diversions of existing utilities
7 - 101	Diversions of existing utilities and Road works
7 - 102	Environmental mitigation
7 - 103	Diversions of existing utilities
7 - 104	Diversions of existing utilities
7 - 105	Diversions of existing utilities

<b>Change Reference</b>	<b>Description of Change</b>
7 - 106	Diversions of existing utilities and Road works
7 - 108	Drainage infrastructure
7 - 110	Road works
7 - 111	Road works
7 - 112	Change Reference unused
7 - 113	Road works
7 - 114	Road works
7 - 115	Road works
7 - 116	Road works
7 - 117	Road works
7 - 119	Road works
7 - 120	Road works
7 - 121	Road works
7 - 122	Road works
7 - 123	Road works
7 - 124	Road works
7 - 125	Road works
7 - 126	Road works
7 - 127	Road works
7 - 128	Road works
7 - 129	Road works
7 - 130	Road works
7 - 131	Road works
7 - 132	Road works
7 - 133	Road works
7 - 134	Road works
7 - 135	Road works
7 - 136	Road works
7 - 137	Road works

<b>Change Reference</b>	<b>Description of Change</b>
7 - 138	Road works
7 - 139	Road works
7 - 140	Road works
7 - 141	Road works
7 - 142	Road works
7 - 143	Road works
7 - 144	Bridge Improvement
7 - 145	Maintenance access
7 - 146	Maintenance access

## Appendix C Table of Changes for GtW and EGL 3 and EGL 4 – Section 7

Change Reference	Description of Change
7 - 56	Replacement or retightening of existing overhead lines at Walpole
7 - 59	Replacement or retightening of existing overhead lines at Walpole
7 – 60	Replacement or retightening of existing overhead lines at Walpole
7 – 64	Replacement or retightening of existing overhead lines at Walpole
7 – 66	Replacement or retightening of existing overhead lines at Walpole
7 – 71	Drainage Infrastructure and Environmental mitigation
7 – 73	Maintenance access
7 – 78	Replacement or retightening of existing overhead lines at Walpole
7 – 92	Drainage Infrastructure
7 – 107	Diversions of existing utilities
7 – 109	Diversions of existing utilities
7 – 118	Replacement or retightening of existing overhead lines at Walpole

National Grid plc  
National Grid House,  
Warwick Technology Park,  
Gallows Hill, Warwick.  
CV34 6DA United Kingdom

Registered in England and Wales  
No. 4031152  
[nationalgrid.com](http://nationalgrid.com)