

# About Norwich to Tilbury

**With electricity demand expected to double in the next few years, Norwich to Tilbury will strengthen the electricity network across East Anglia. It will help to deliver secure, cleaner and more affordable energy to where it is needed most, including in Norfolk, Suffolk, and Essex.**

Norwich to Tilbury is part of The Great Grid Upgrade, National Grid's nationwide programme to deliver secure, low carbon electricity to homes and businesses, reduce bills, and meet growing demand.

Our proposals are made up of:

- approximately 159 km of new overhead line and approximately 21 km of new underground cable
- a new East Anglia Connection Node (EACN) on the Tendring Peninsula and a new 400 kV GIS substation at Tilbury North
- seven new Cable Sealing End (CSE) compounds.





# Where we are

In August 2025 we submitted our Development Consent Order (DCO) application, which was accepted for examination in September 2025.

Following the examination, the Examining Authority will make a recommendation to the Secretary of State. The Secretary of State will make the decision on whether or not to approve our proposals.





# The proposed change near Bulphan

We are proposing a change to our plans where the overhead line crosses a metallic pipeline, west of Langdon Hills Golf Club.

The pipeline is part of the national fuel infrastructure and is operated by the British Pipeline Agency Limited (BPA) on behalf of the owner of the pipeline, United Kingdom Oil Pipelines Limited (UKOP).

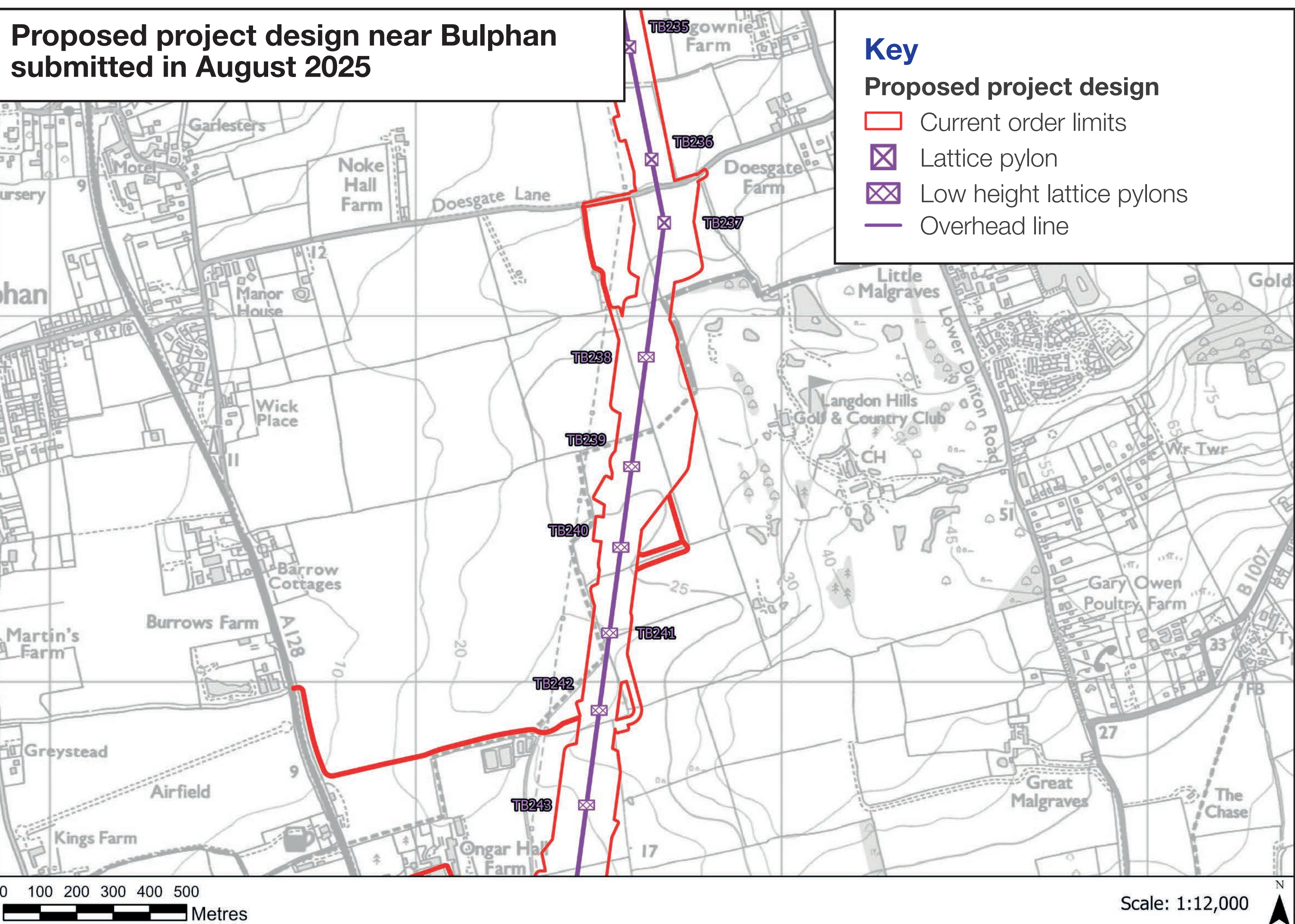
Since we submitted our DCO application, we have continued our discussions with BPA and studies have shown that mitigation works are needed to protect the pipeline.

The proposed mitigation work involves installing anti-corrosion earthing strips and adding surface-mounted monitoring equipment units. Temporary construction access as well as temporary working and laydown areas will also be required to complete these works.

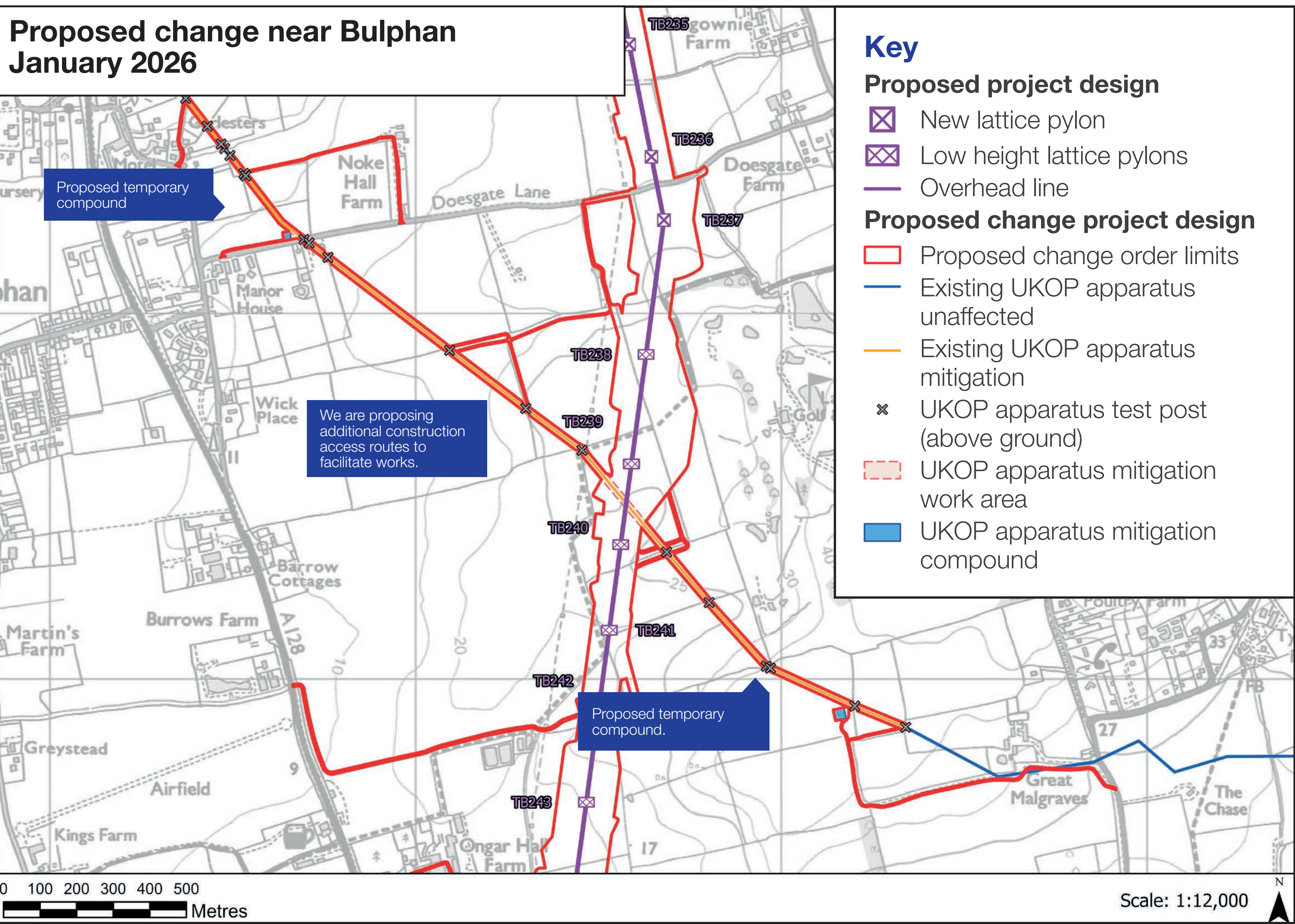
This work would usually be carried out by utility companies under their existing permitted development rights. In this case, neither the BPA nor UKOP has these rights, and so we need to include these works within the Norwich to Tilbury proposals.

We are not proposing to change the route or location of pylons in this area.

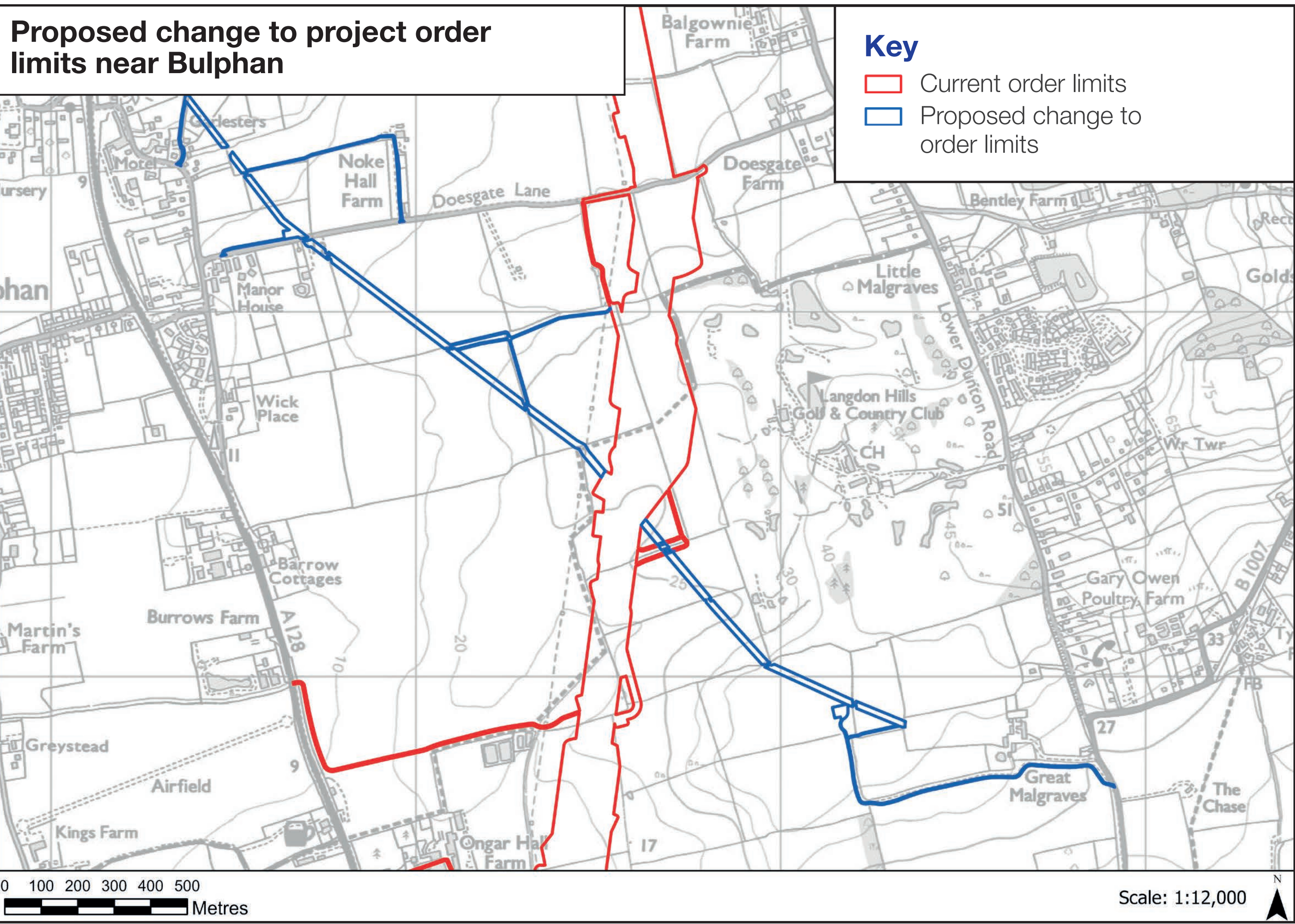
## Project design submitted 2025



## Proposed change 2026



## Proposed change to the order limits





# The proposed change near Little Bromley

We are proposing a change to the alignment of the construction access and permanent access routes for a new East Anglia Connection Node (EACN) substation.

When we submitted our DCO application, our proposals included construction access and permanent access routes south west of Little Bromley, turning off Bentley Road and following field boundaries in the proposed substation site.

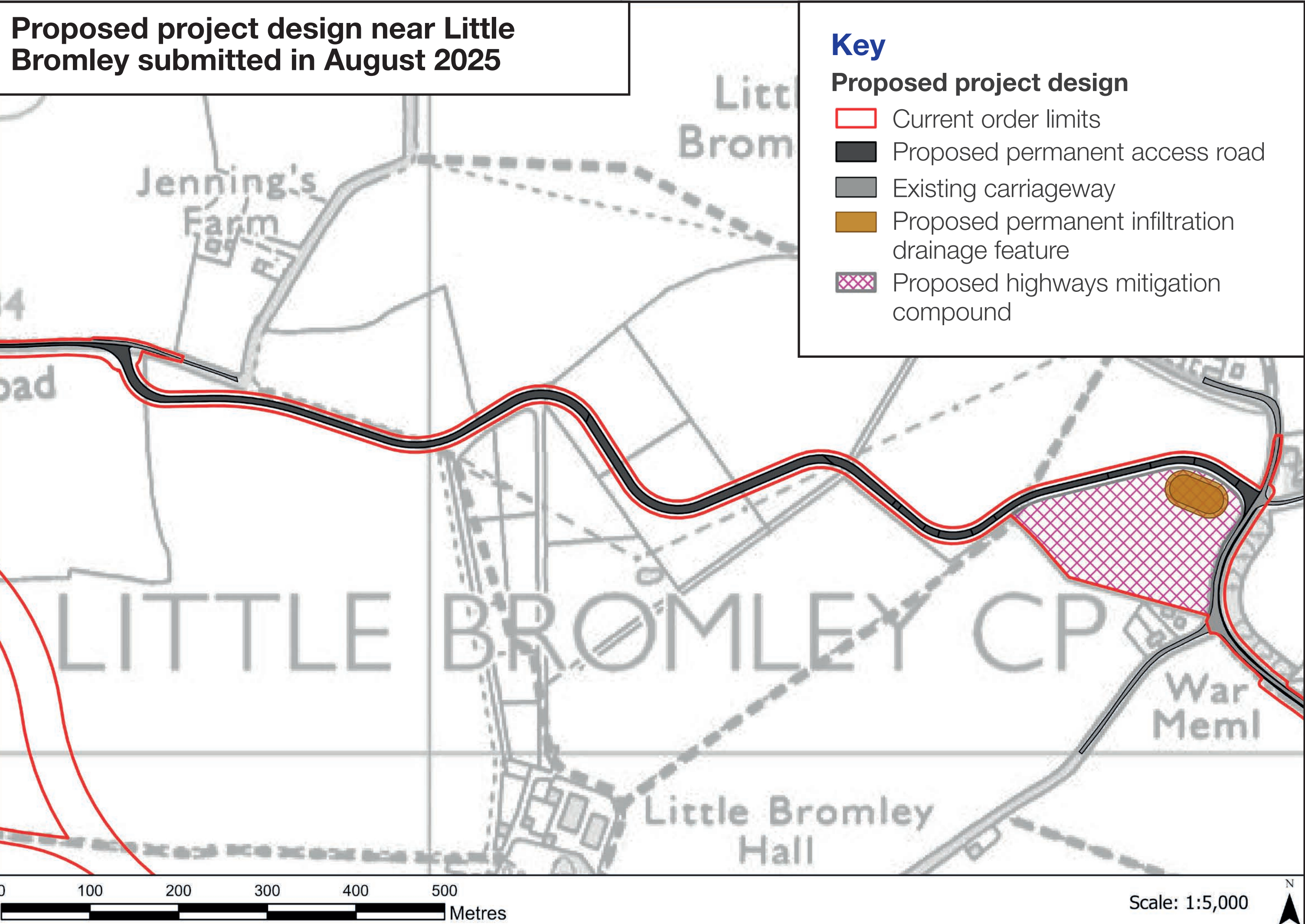
We have continued our discussions with landowners, and we are now proposing a change in the alignment of these routes within the same fields.

We expect most of our construction traffic would continue to use the shared access which follows the windfarm export cable corridor between Bentley Road and Ardleigh Road.

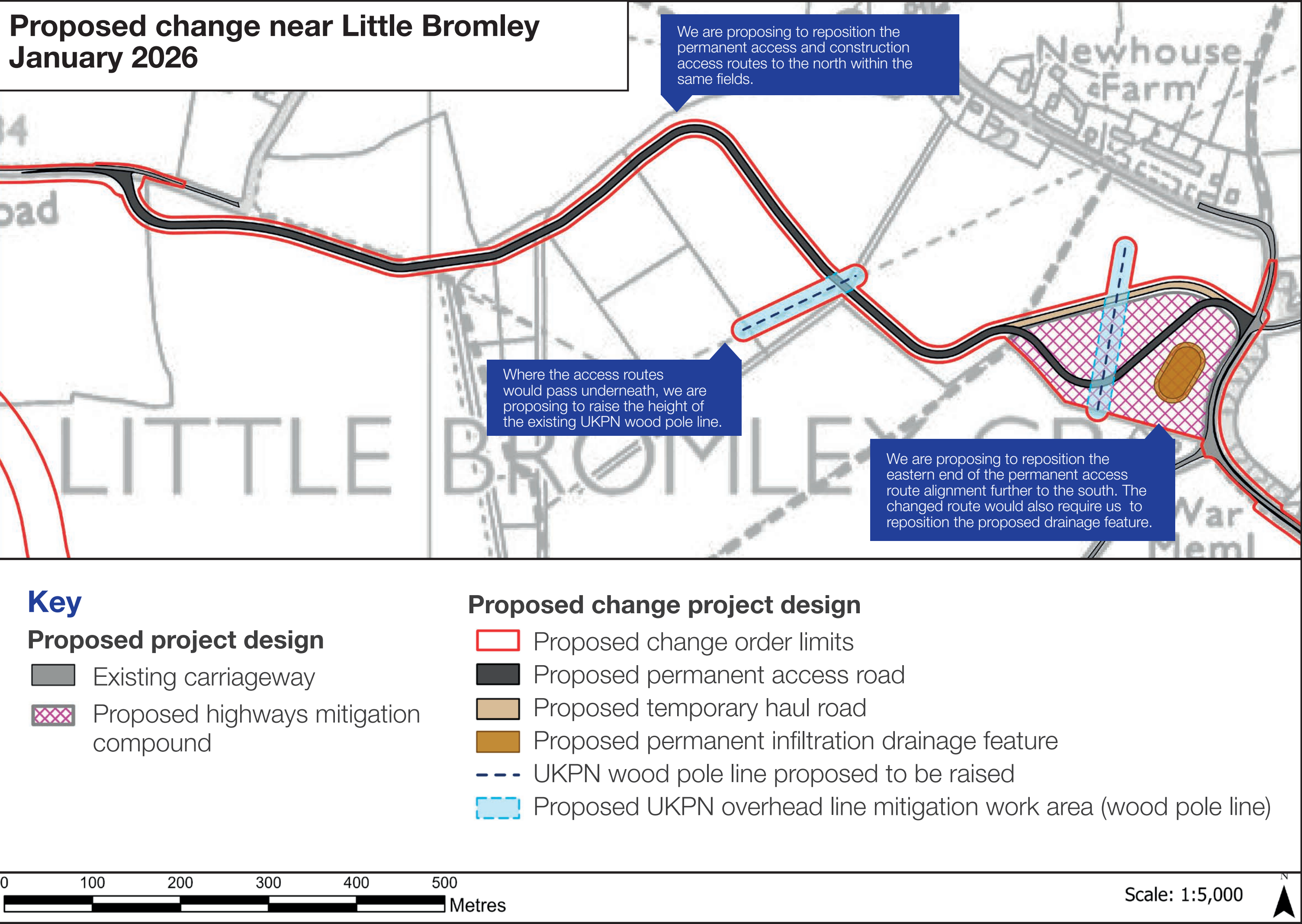
The construction access route would only be used if construction traffic could not follow the shared construction route with North Falls and Five Estuaries.

We are also proposing a change to the alignment of the eastern end of the permanent access route. The permanent access route would be used infrequently for abnormal indivisible loads as part of maintenance during operation of the EACN substation. This route alignment would not be used during the construction of the substation.

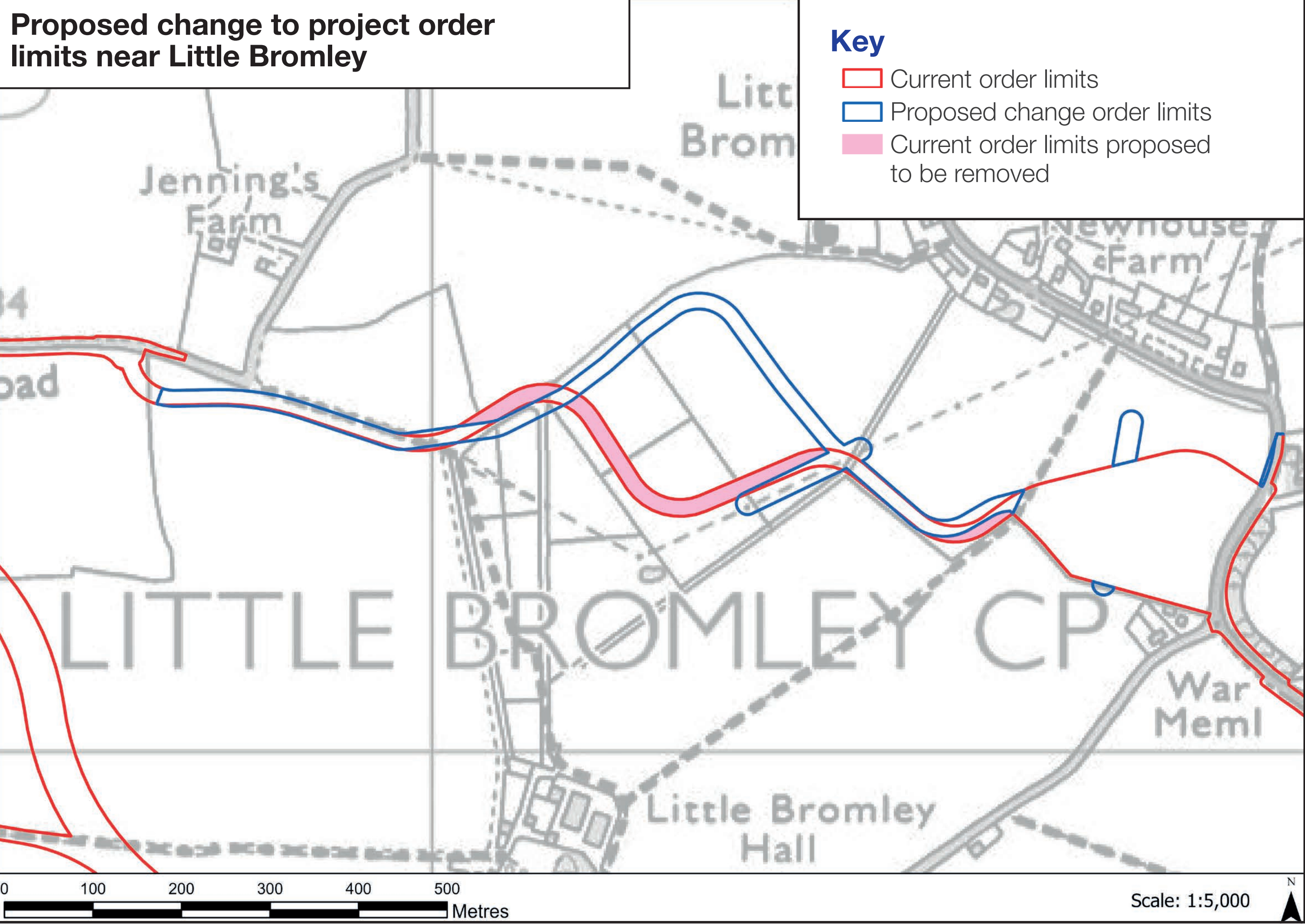
## Project design submitted 2025



## Proposed change 2026



## Proposed change to the order limits





# Have your say

## Before we finalise our plans, we are seeking feedback on the proposed changes from nearby communities.

Our targeted consultation on the two proposed changes runs from 12 noon 19 January 2026 to 11:59 pm 23 February 2026.

If you have any comments on either of the proposed changes, please use the location reference provided in our materials.

If you have previously provided feedback on Norwich to Tilbury, please note that these comments have already been considered. Only comments or feedback relating to the above proposed changes will be considered as part of this consultation.

### Feedback can be provided by:



**Online**  
Complete a feedback questionnaire:  
[nationalgrid.com/norwich-to-tilbury](https://nationalgrid.com/norwich-to-tilbury)



**Email**  
Send us an email:  
[contact@n-t.nationalgrid.com](mailto:contact@n-t.nationalgrid.com)



**Freepost**  
Write to us at:  
(no stamp required)  
FREEPOST N TO T



The deadline for providing feedback is 11:59 pm 23 February 2026.



**The Great Grid Upgrade**

Norwich to Tilbury

**nationalgrid**

# Community benefits

**We believe that hosting energy infrastructure should benefit local communities.**

In line with Government guidance on community funds for new transmission projects, we expect to invest more than £30 million to support communities near our Norwich to Tilbury proposals.



We will hold a consultation to ask for your ideas on how this funding should be used. Your feedback will help shape our investment priorities, which could include skills and training, enhancing green spaces, supporting physical and mental health, and improving community facilities.