

Chapter 24 Commercial Fisheries

Figure 24.1 Commercial fisheries study area

Figure 24.2 Surveillance sightings by vessel nationality with in the Study Area

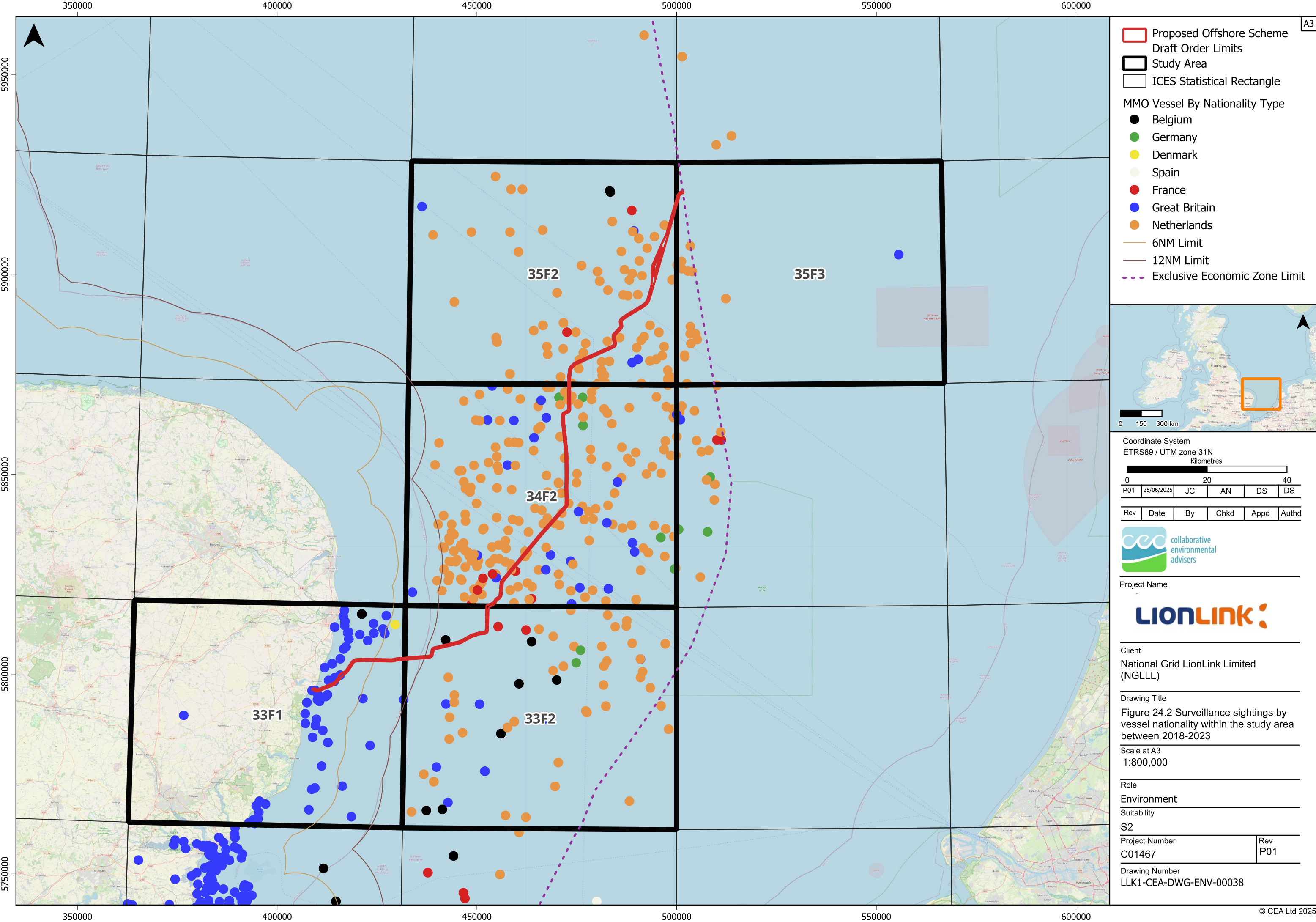
Figure 24.3 Surveillance sightings by fishing method within the Study Area

Figure 24.4 Areas of Historic fishing rights

Figure 24.5 Beam trawling and bottom otter trawl effort within the Study Area

Figure 24.6 Bottom seines and dredging effort within the Study Area

Figure 24.7 Pelagic trawl and seine and static gear effort within the Study Area



Proposed Offshore Scheme
Draft Order Limits
Study Area
ICES Statistical Rectangle

MMO Vessel By Nationality Type

- Belgium
- Germany
- Denmark
- Spain
- France
- Great Britain
- Netherlands

6NM Limit
12NM Limit
Exclusive Economic Zone Limit



Coordinate System
ETRS89 / UTM zone 31N
Kilometres

0 20 40

P01	25/06/2025	JC	AN	DS	DS
-----	------------	----	----	----	----

Rev	Date	By	Chkd	Appd	Authd
-----	------	----	------	------	-------



Project Name

LIONLINK

Client

National Grid LionLink Limited (NGLLL)

Drawing Title

Figure 24.2 Surveillance sightings by vessel nationality within the study area between 2018-2023

Scale at A3
1:800,000

Role

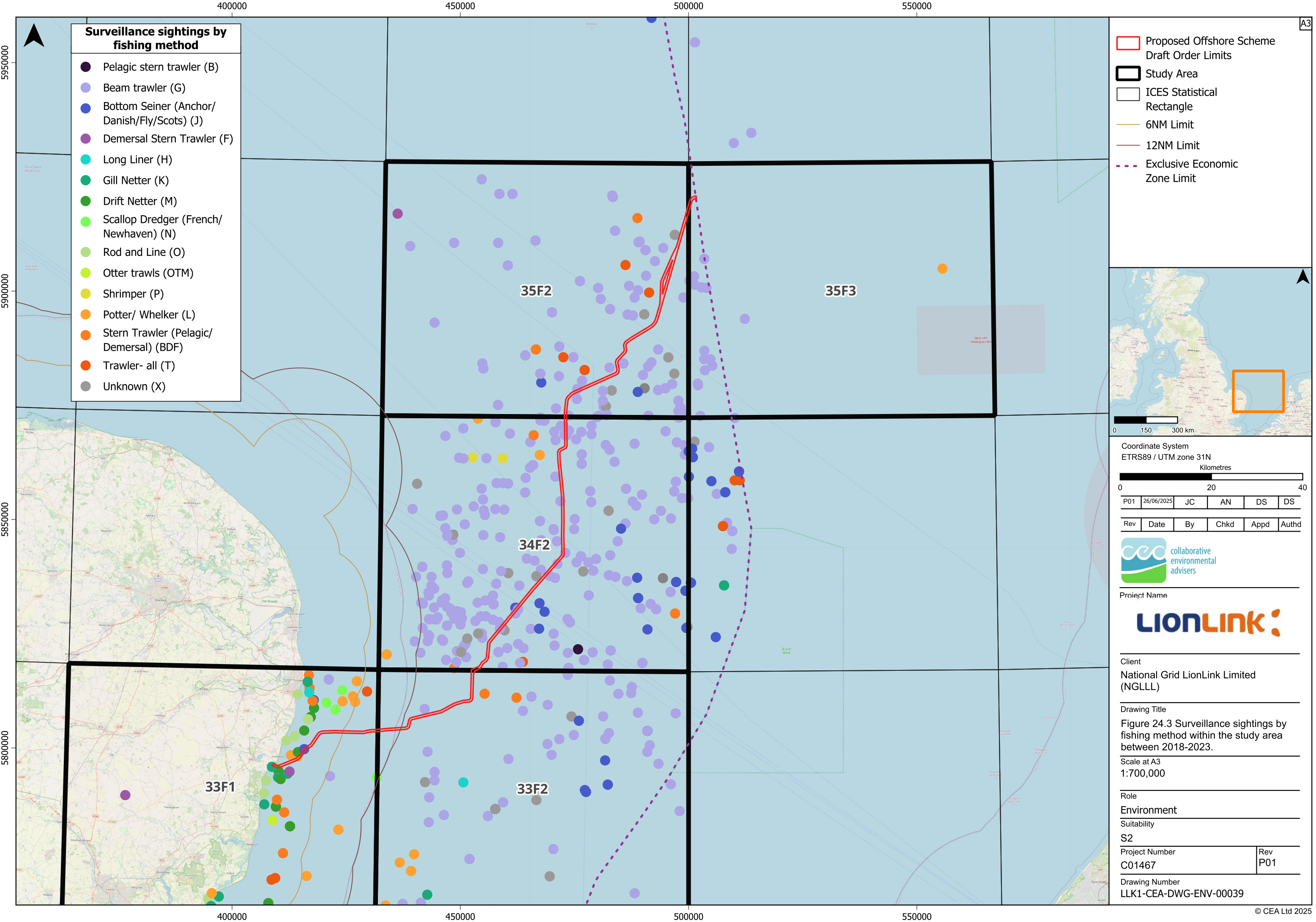
Environment

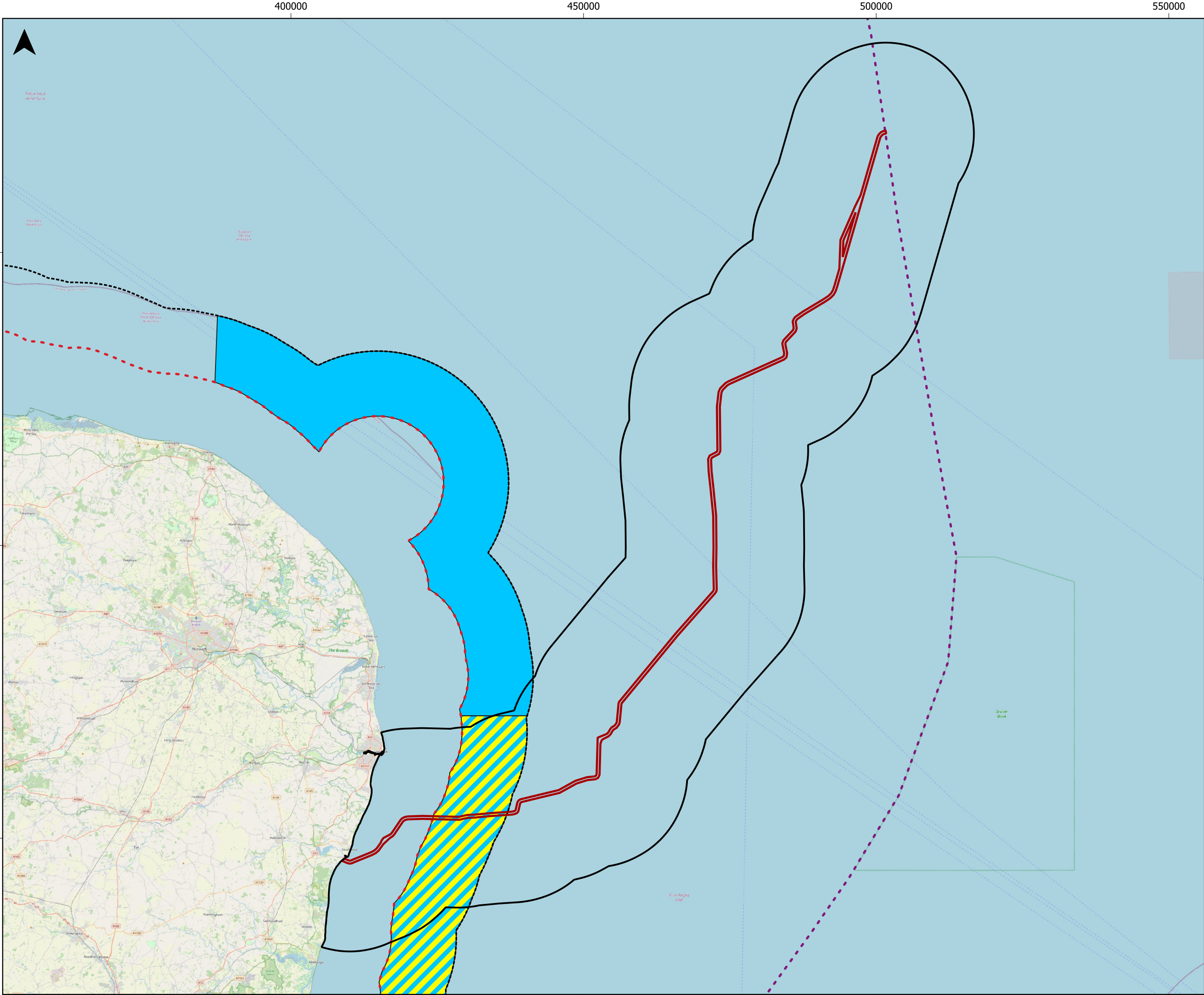
Suitability

S2

Project Number C01467	Rev P01
--------------------------	------------

Drawing Number
LLK1-CEA-DWG-ENV-00038





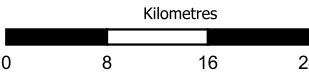
- Proposed Offshore Scheme**
Draft Order Limits
- Fish and Shellfish Study Area**
(15km)

Historical Fishing Rights

- Belgium - Demersal**
- France - All Species, Belgium - Demersal**
- 6NM Limit**
- 12NM Limit**
- EEZ**



Coordinate System: ETRS89 / UTM zone 31N



P01	30/07/2025	AN	JC	SP	DS
-----	------------	----	----	----	----

Rev	Date	By	Chkd	Appd	Authd
-----	------	----	------	------	-------



Project Name

LIONLINK

Client
National Grid LionLink Limited (NGLLL)

Drawing Title
Figure 24.4 Historic Fishing Rights
(London Convention, 1963)

Scale at A3

1:600,000

Role
Environment

Suitability
S2

Project Number C01467	Rev P01
--------------------------	------------

Drawing Number
LLK1-CEA-DWG-ENV-00052

