

# Chapter 23 Shipping and Navigation

Figure 23.1 Overview of Study Area

Figure 23.2 Navigational Features

Figure 23.3 Navigational Features Near Landfall

Figure 23.4 RNLi Incidents by Type (2014 to 2023)

Figure 23.5 Vessel Density (12 months)

Figure 23.6 AIS Tracks by Type (May 2024)

Figure 23.7 Active Fishing by Gear Type

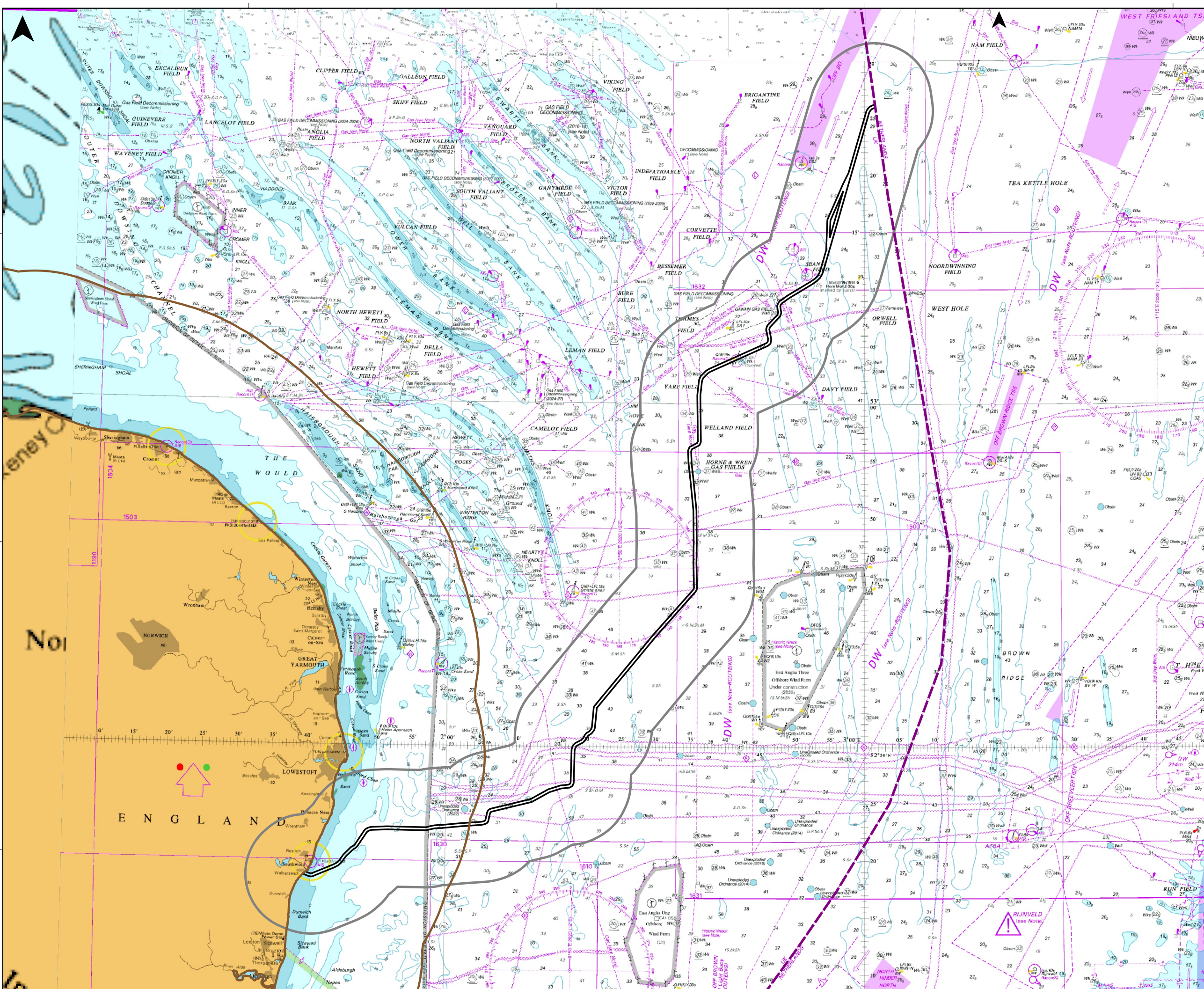


400000

450000

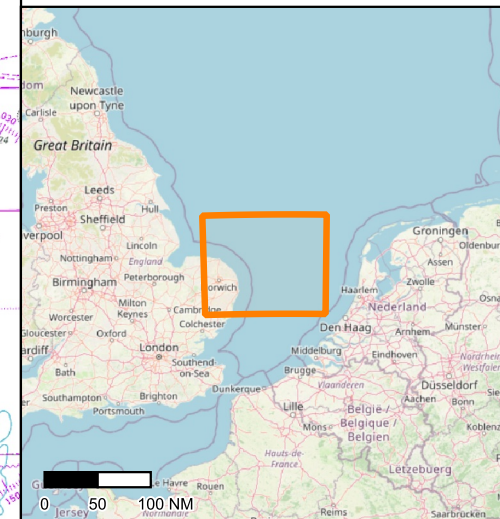
500000

550000

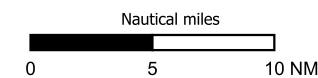


### Legend

- Proposed Offshore Scheme Draft Order Limits
- Study Area
- Exclusive Economic Zone Limit
- 12nm Limit



Coordinate System  
WGS 84 / World Mercator



Rev	Date	By	Chkd	Appd	Authd
A	23/07/2025	JaC	LC	DS	DS



Project Name

**LIONLINK**

Client

National Grid LionLink Limited  
(NGLL)

Drawing Title

Figure 23.1 - Overview of Study Area

Scale at A3  
1:600,000

Role

Environment

Suitability

S2

Project Number

C01467

Rev

P01

Drawing Number

LLK1-CEA-DWG-ENV-00066



400000

450000

500000

550000

### Legend

- Proposed Offshore Scheme
- Draft Order Limits
- 12nm Limit
- Exclusive Economic Zone Limit
- Aid to Navigation
- Well
- Unexploded Ordnance
- Platform
- Pilot Boarding Station
- Charted Wreck
- Reported Anchorage
- UK Border
- Subsea Cable
- Pipeline
- Traffic Separation Scheme
- Transshipment Area
- Aggregate Dredging Area
- Designated Anchorage
- Spoil Ground
- Deep Water Route

- Wind Farm
- Under Construction
  - Operational

Coordinate System  
WGS 84 / World Mercator

Nautical miles  
0 5 10 NM

A	23/07/2025	JaC	LC	DS	DS
Rev	Date	By	Chkd	Appd	Authd



Project Name

**LIONLINK**

Client

National Grid LionLink Limited  
(NGLLL)

Drawing Title

Figure 23.2 - Navigational Features

Scale at A3  
1:600,000

Role

Environment

Suitability

S2

Project Number  
C01467

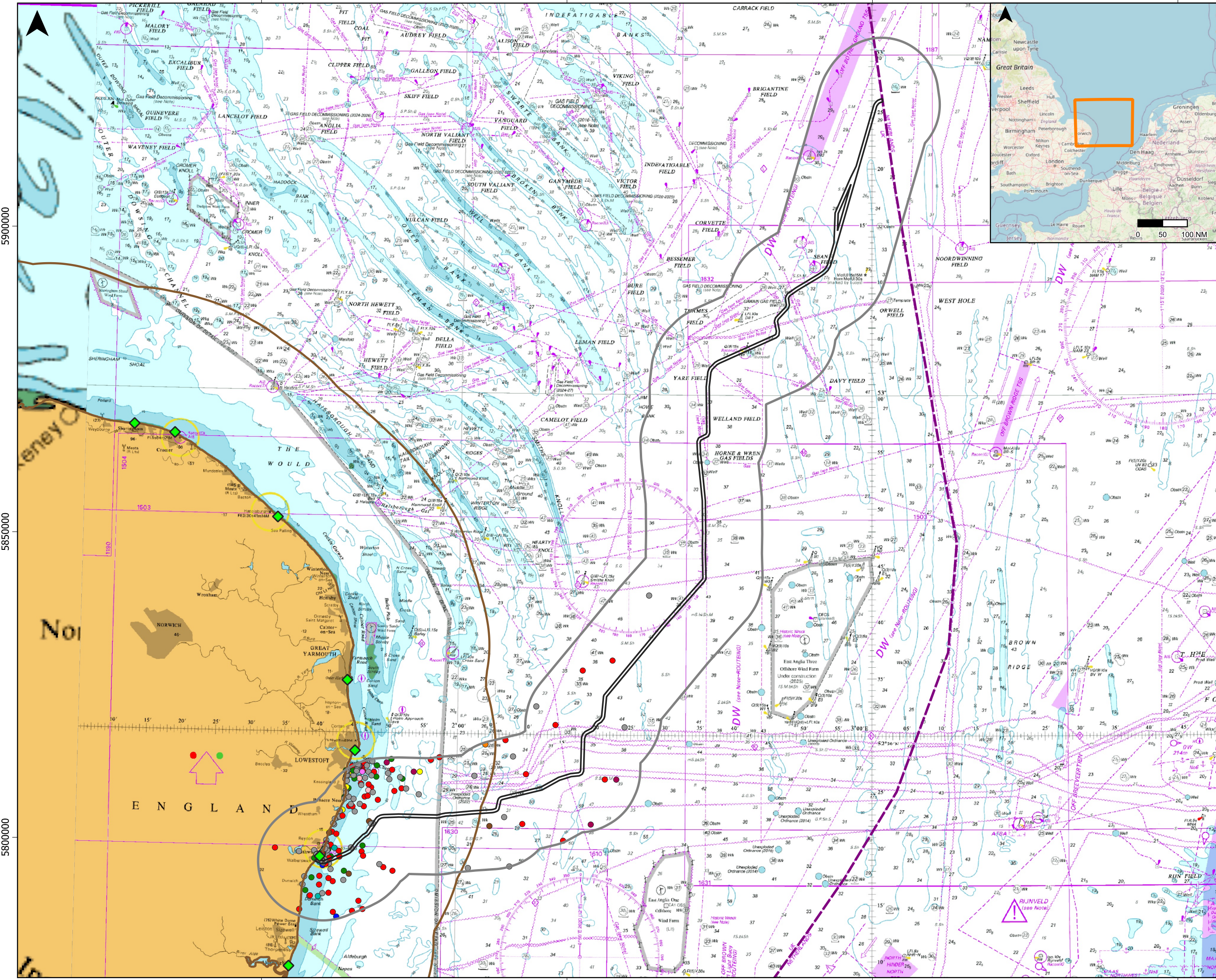
Rev  
P01

Drawing Number  
LLK1-CEA-DWG-ENV-00067





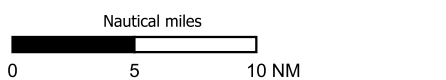




- Legend
- Proposed Offshore Scheme
  - Draft Order Limits
  - Study Area
  - 12nm Limit
  - Exclusive Economic Zone Limit
  - RNLI Station

- Incident Type
- Adverse Conditions
  - Capsize
  - Collision
  - Flooding/Foundering
  - Grounding
  - Machinery Failure
  - Other
  - Person in Danger
  - Sail Failure
  - Steering Failure
  - Unspecified
  - Vessel May be in Trouble
  - Fire/Explosion

Coordinate System  
WGS 84 / World Mercator



A	23/07/2025	JaC	LC	DS	DS
Rev	Date	By	Chkd	Appd	Authd



Project Name

**LIONLINK**

Client  
National Grid LionLink Limited (NGLL)

Drawing Title  
Figure 23.4 - RNLI Incidents by Type (2014 to 2023)

Scale at A3  
1:600,000

Role  
Environment  
Suitability  
S2

Project Number C01467	Rev P01
Drawing Number LLK1-CEA-DWG-ENV-00069	

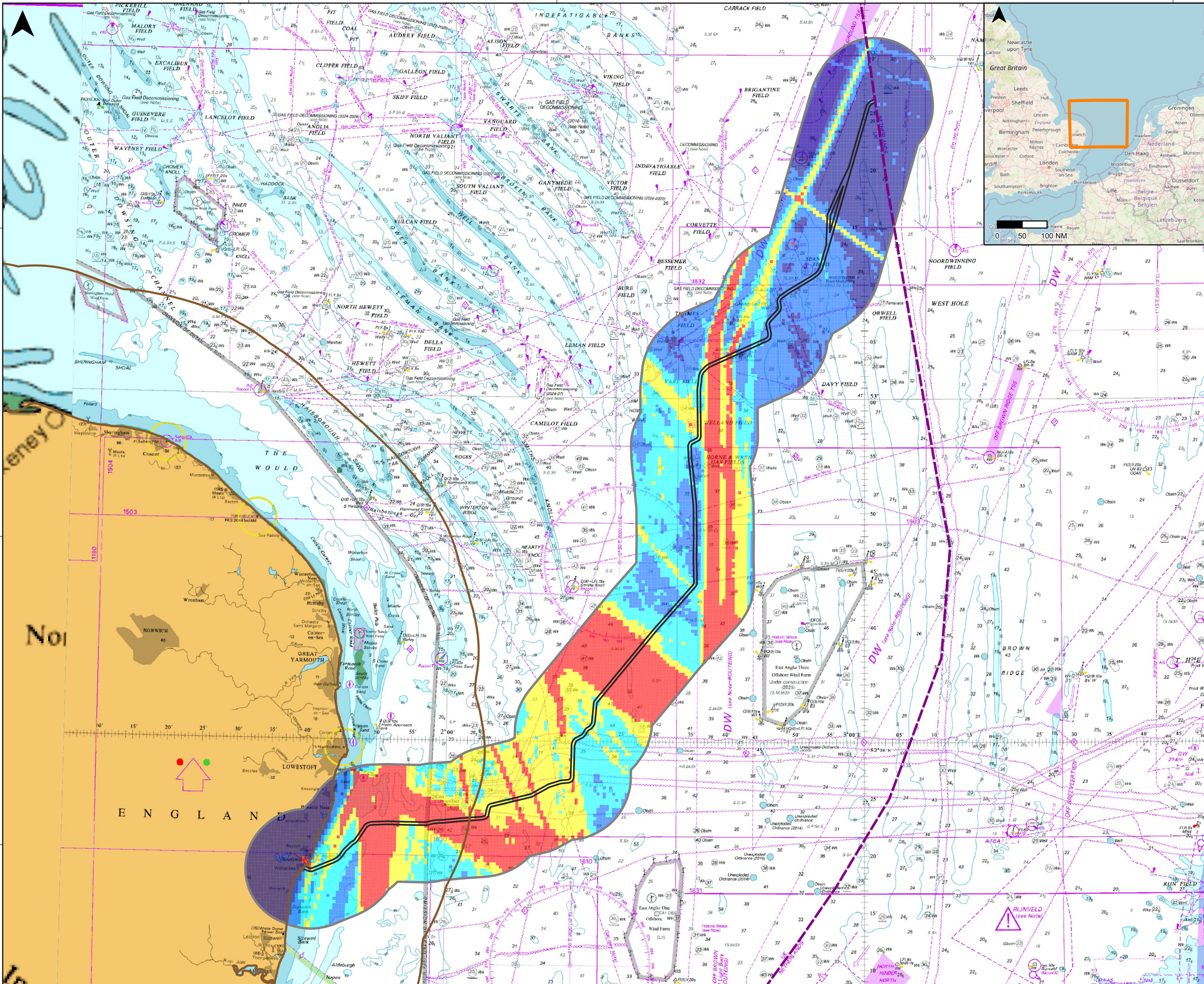


400000

450000

500000

550000



### Legend

- Proposed Offshore Scheme
- Draft Order Limits
- Study Area
- 12nm Limit
- Exclusive Economic Zone Limit

### Vessel Density (12 Months)

- Lowest
- Highest

Coordinate System  
WGS 84 / World Mercator

Nautical miles  
0 5 10 NM

A	23/07/2025	JaC	LC	DS	DS
Rev	Date	By	Chkd	Appd	Authd



Project Name

**LIONLINK**

Client

National Grid LionLink Limited  
(NGLLL)

Drawing Title

Figure 23.5 - Vessel Density (12 months)

Scale at A3

1:600,000

Role

Environment

Suitability

S2

Project Number

C01467

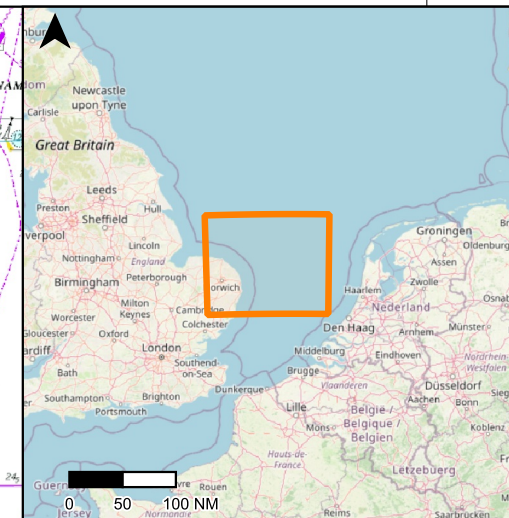
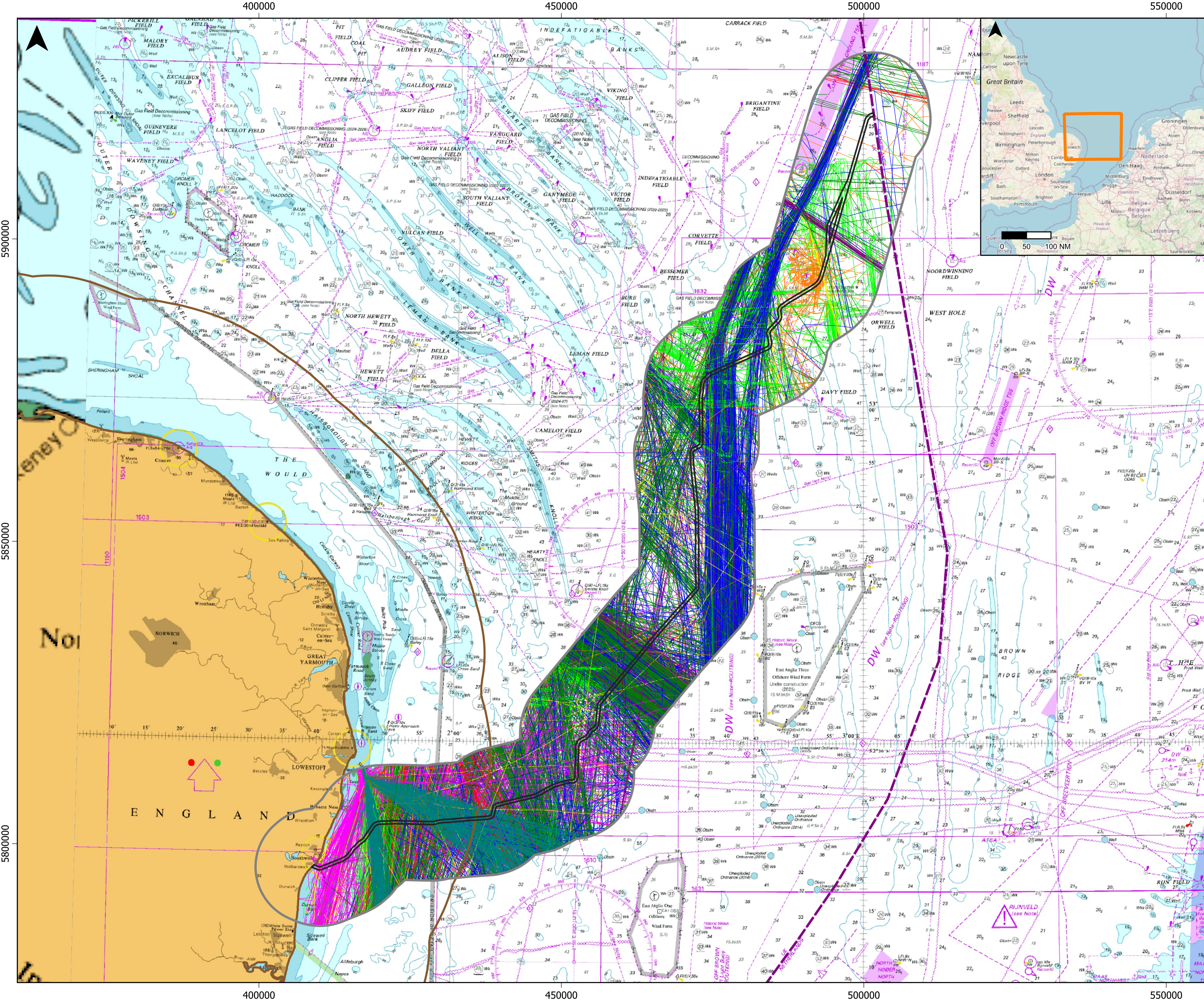
Rev

P01

Drawing Number

LLK1-CEA-DWG-ENV-00070

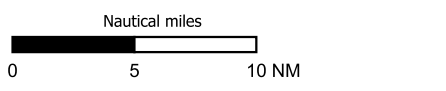




- Legend
- Proposed Offshore Scheme
  - Draft Order Limits
  - Study Area
  - 12nm Limit
  - Exclusive Economic Zone Limit

- Vessel Type
- Unspecified
  - Fishing
  - Military
  - Dredging/Underwater Ops
  - High Speed Craft
  - Tug
  - Passenger
  - Cargo
  - Tanker
  - Other
  - Recreational
  - Oil and Gas
  - Wind Farm

Coordinate System  
WGS 84 / World Mercator



A	23/07/2025	JaC	LC	DS	DS
Rev	Date	By	Chkd	Appd	Authd



Project Name  
**LIONLINK**

Client  
National Grid LionLink Limited (NGLL)

Drawing Title  
Figure 23.6 - AIS Tracks by Type (May 2024)

Scale at A3  
1:600,000

Role  
Environment  
Suitability  
S2

Project Number C01467	Rev P01
--------------------------	------------

Drawing Number  
LLK1-CEA-DWG-ENV-00071

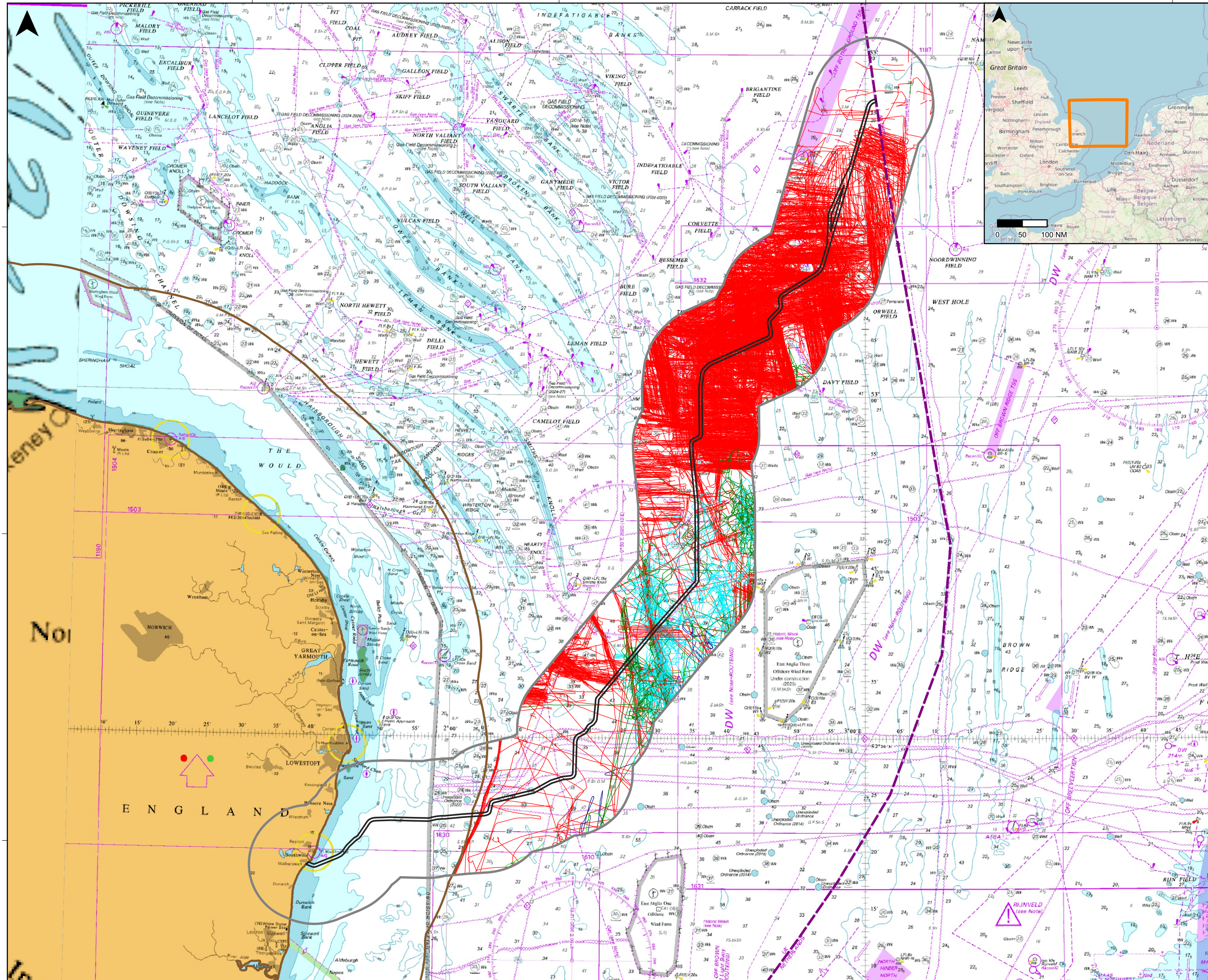


400000

450000

500000

550000



### Legend

- Proposed Offshore Scheme Draft Order Limits
- Study Area
- Exclusive Economic Zone Limit
- 12nm Limit

### Gear Type

- Beam Trawler
- Demersal Trawler
- Pelagic Trawler
- Pair Trawler (Demersal)
- Pair Trawler (Pelagic)
- Pair Trawler (Unspecified)
- Twin Trawler
- Shrimp Trawler
- Trawler (Unspecified)
- Dredger

Coordinate System  
WGS 84 / World Mercator

Nautical miles  
0 5 10 NM

A	23/07/2025	JaC	LC	DS	DS
Rev	Date	By	Chkd	Appd	Authd



Project Name

**LIONLINK**

Client

National Grid LionLink Limited (NGLLL)

Drawing Title

Figure 23.7 - Active Fishing by Gear Type

Scale at A3  
1:600,000

Role

Environment

Suitability

S2

Project Number

C01467

Rev

P01

Drawing Number

LLK1-CEA-DWG-ENV-00072