

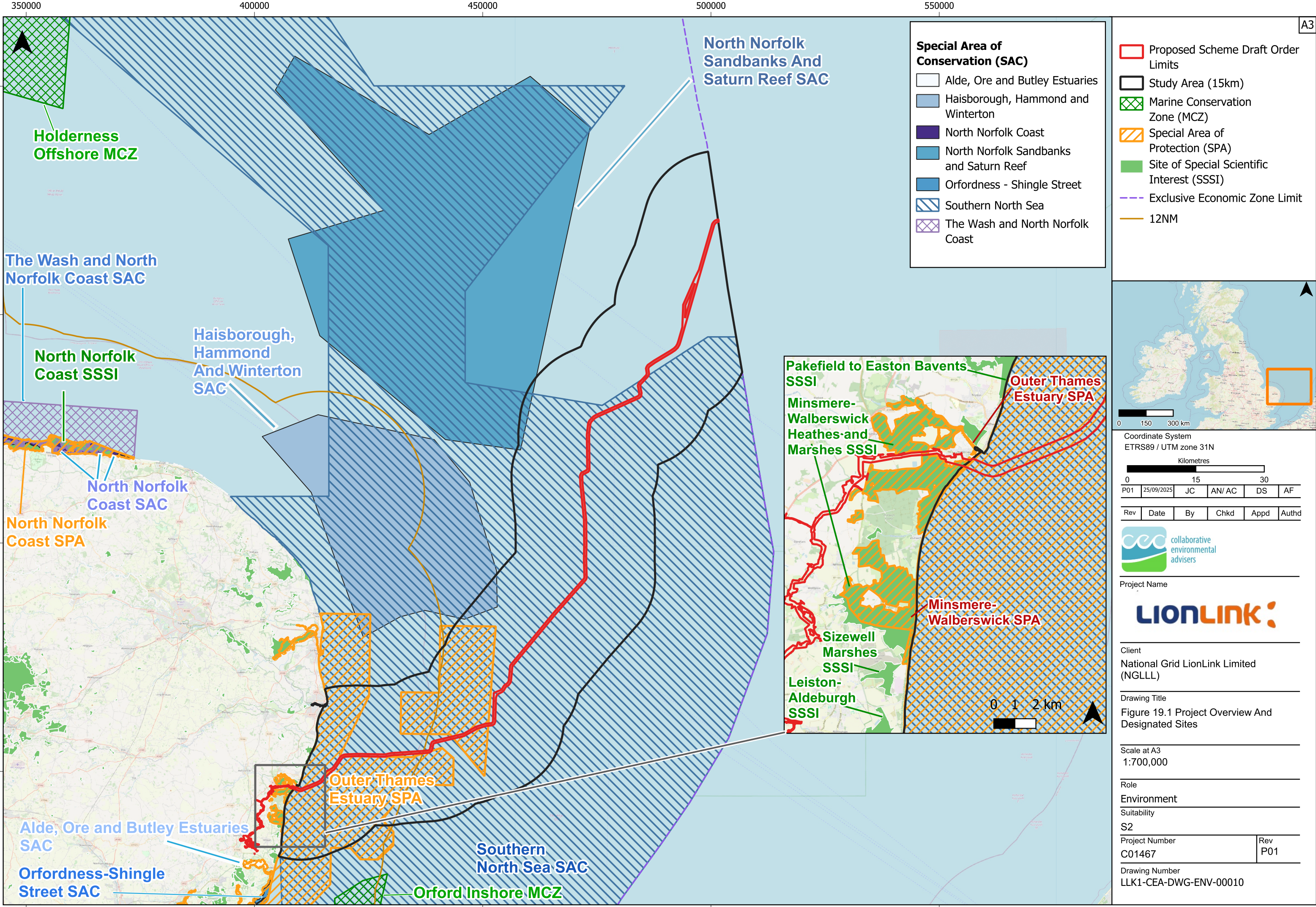
Chapter 19 Intertidal and Subtidal Benthic Ecology

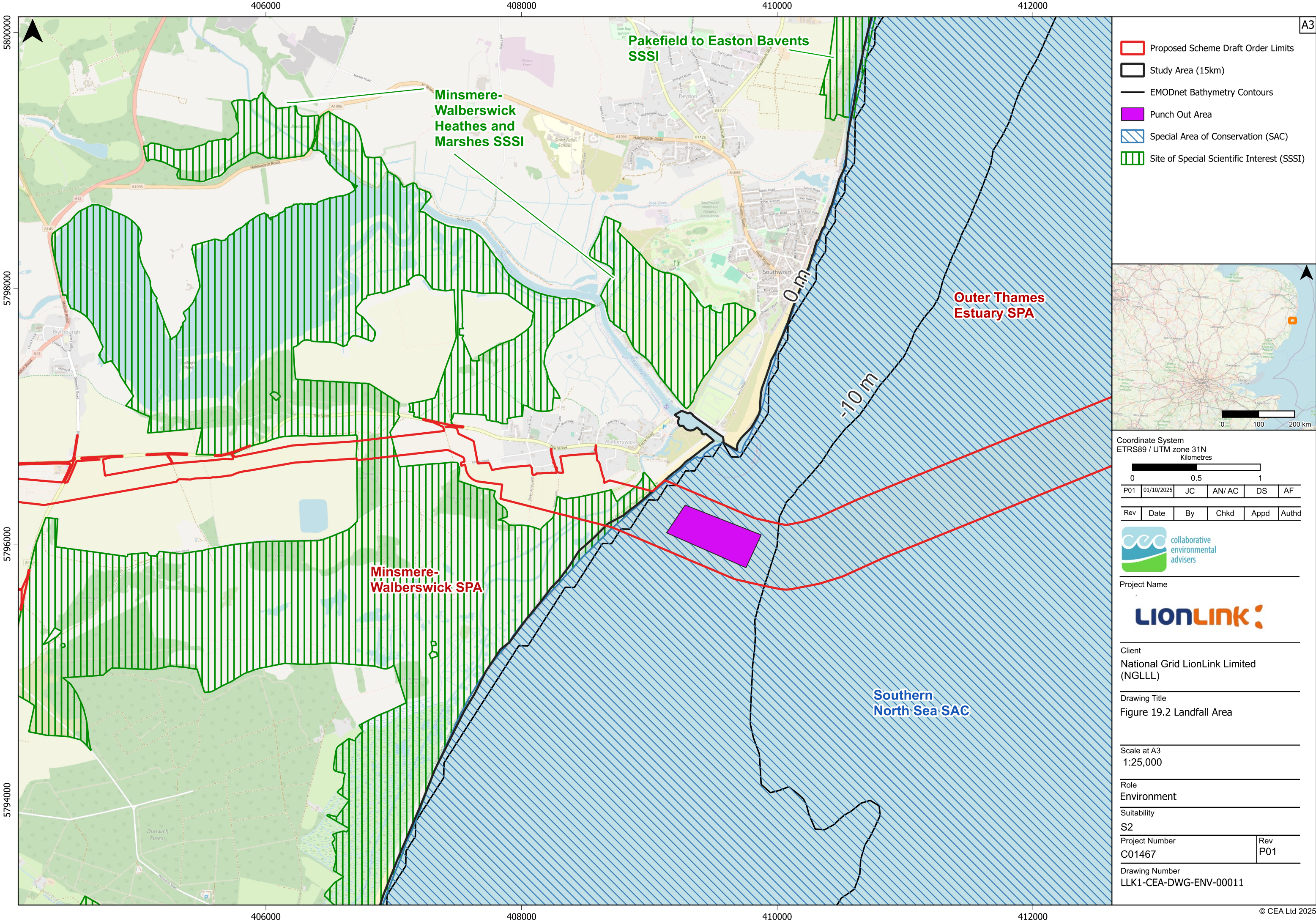
Figure 19.1 Project Overview

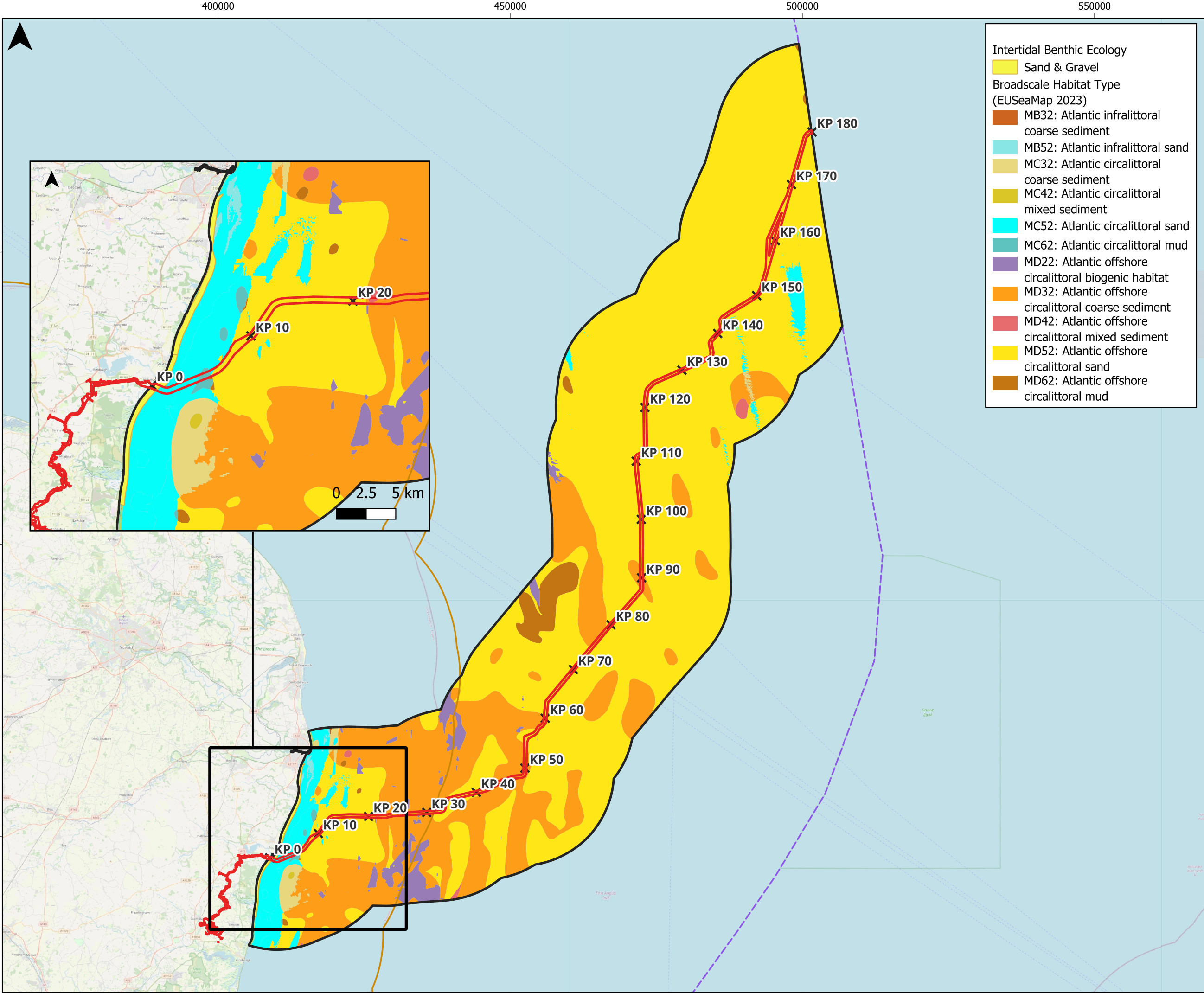
Figure 19.2 Landfall area

Figure 19.3 Broadscale Habitat Map

Figure 19.4 Protected Habitats







A3

Proposed Scheme Draft Order Limits

Study Area (15km)

×

Kilometre Point
(with 10km spacing)

12 NM Limit

Exclusive Economic Zone Limit

0

150

300 km

0

150

300 km

Coordinate System

ETRS89 / UTM zone 31N

Kilometres

0

15

30

P01

25/09/2025

JC

AN/ AC

DS

AF

Rev

Date

By

Chkd

Appd

Authd

cec

collaborative
environmental
advisers

Project Name

LIONLINK

Client

National Grid LionLink Limited
(NGLLL)

Drawing Title

Figure 19.3 Broadscale Habitat
Summary

Scale at A3

1:600,000

Role

Environment

Suitability

S2

Project Number

C01467

Rev

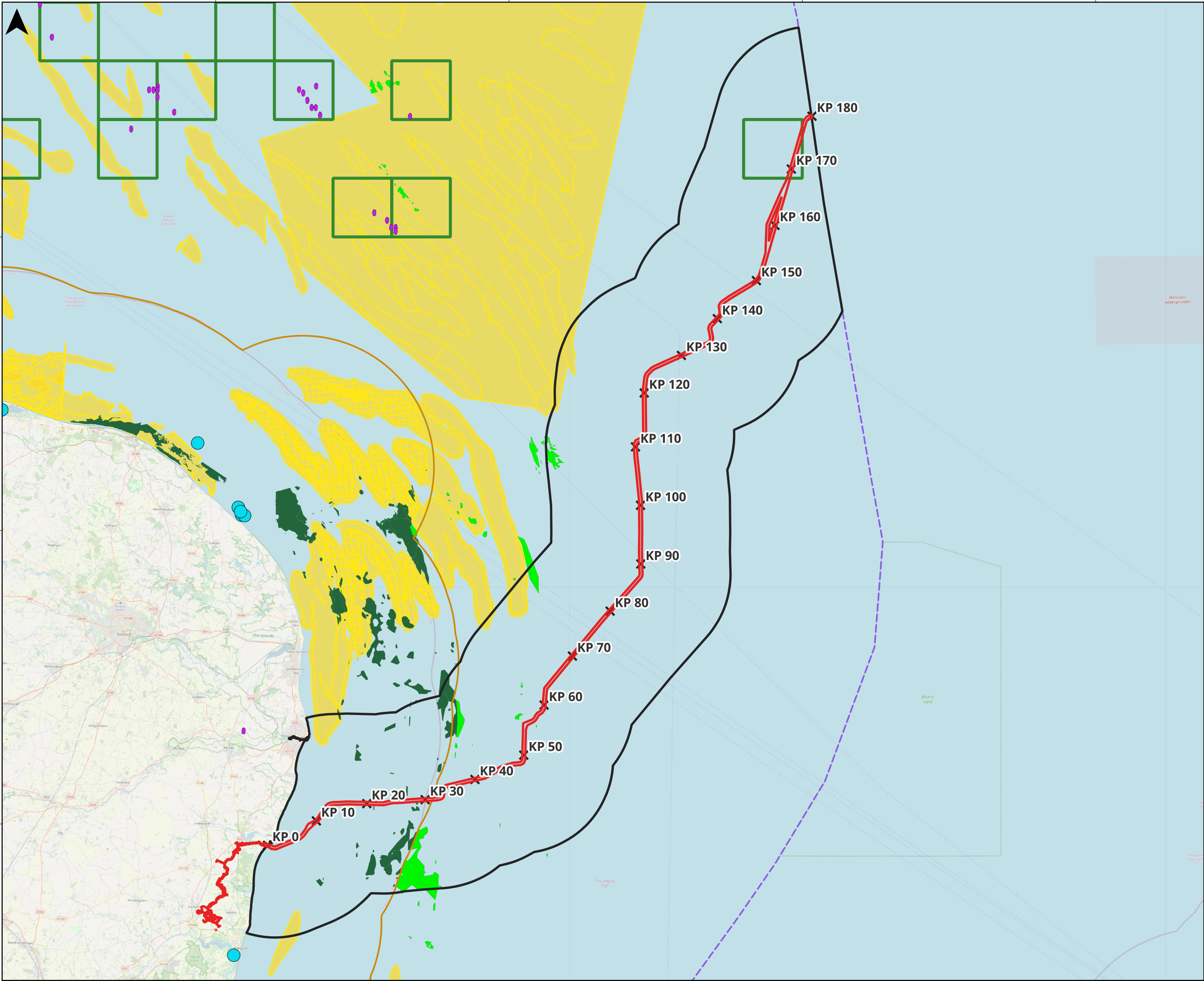
P01

Drawing Number

LLK1-CEA-DWG-ENV-00012

© CEA Ltd 2025

©OpenStreetMap-Open Data Commons Open Database License (ODBL), Creative Commons Attribution-ShareAlike (CC-BY-SA), UKHO & English Nature-Contains public sector information licensed under the Open Government Licence v3.0. The data layers used for this work were Licensed under CC-BY 4.0 from the European Marine Observation and Data Network (EMODnet) Seabed Habitats initiative (www.emodnet-seabedhabitats.eu), funded by the European Commission. EUSaMap, 2023. Derived in part by BGS data ©NERC All Rights Reserved. X:\GIS\GIS_PROJECTS\C01467_NGV_LionLink\Projects\Layouts\03_GEO\C01467_GEO-008.gqz



- Proposed Scheme Draft Order Limits
- Study Area (15km)
- Kilometre Point (with 10km spacing)
- Ocean Quahog (NBN Atlas)
- Ocean Quahog (MEDIN)
- Blue Mussel (EMODnet)
- Annex I Reef
- Sabellaria Reef (Annex I)
- Annex I Sandbank
- 12 NM Limit
- Exclusive Economic Zone Limit



Coordinate System					
ETRS89 / UTM zone 31N					
Kilometres					
<div><div></div><div>01020</div></div>					
P01	01/10/2025	JC	AN/ AC	DS	AF
Rev	Date	By	Chkd	Appd	Authd



Project Name

LIONLINK

Client
National Grid LionLink Limited (NGLLL)

Drawing Title
Figure 19.4 Protected Habitats

Scale at A3
1:600,000

Role
Environment
Suitability
S2

Project Number C01467	Rev P01
--------------------------	------------

Drawing Number
LLK1-CEA-DWG-ENV-00013