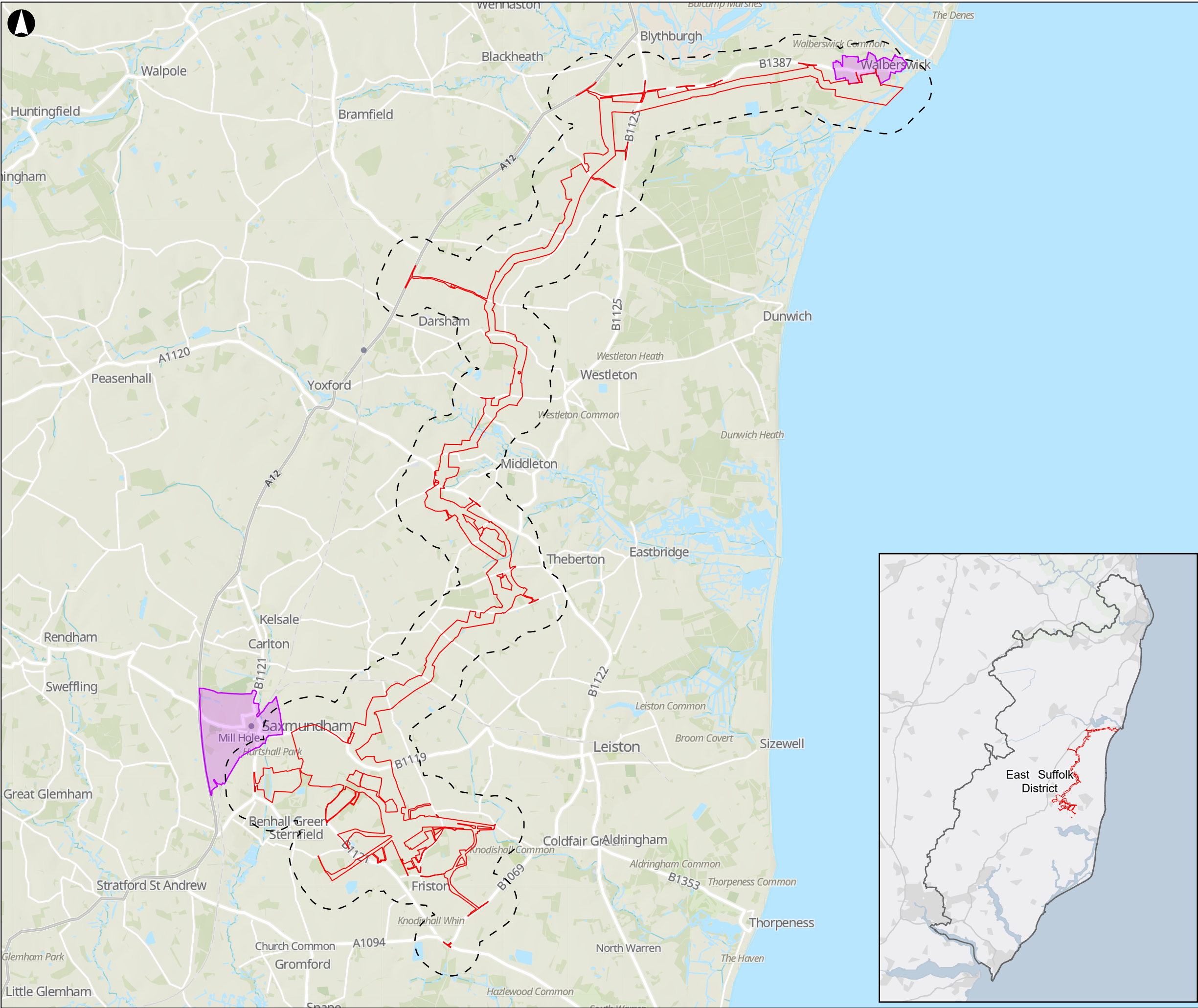


Chapter 16 Socio-economics, Recreation and Tourism

Figure 16.1 Socio-Economic Study Area

Figure 16.2 Community Facilities and Open Space, Visitor / Tourism Facilities, Other Local Businesses, Promoted Recreational Routes, and Development Land



- Proposed Onshore Scheme Draft Order Limits
- 500m Study Area
- Key Settlement within Study Area

Settlement Boundaries, East Suffolk Open Data © Crown Copyright and database rights 2020 Ordnance Survey 100019684. Licensed under the Open Government Licence 3.0. Whilst every effort is made to ensure the accuracy of data, it cannot be guaranteed free of errors.

Contains OS data © Crown Copyright and database right 2023
Contains data from OS Zoomstack

Coordinate System: British National Grid



| | | | | | |
|-----|------------|----|----|----|----|
| P02 | 24/09/2025 | AW | JM | CP | CE |
|-----|------------|----|----|----|----|

| | | | | | |
|-----|------|----|------|------|-------|
| Rev | Date | By | Chkd | Appd | Authd |
|-----|------|----|------|------|-------|

ARUP

8 Fitzroy Street
London W1T 4BJ
Tel +44 20 7636 1531
www.arup.com

Client
National Grid LionLink Limited (NGLLL)

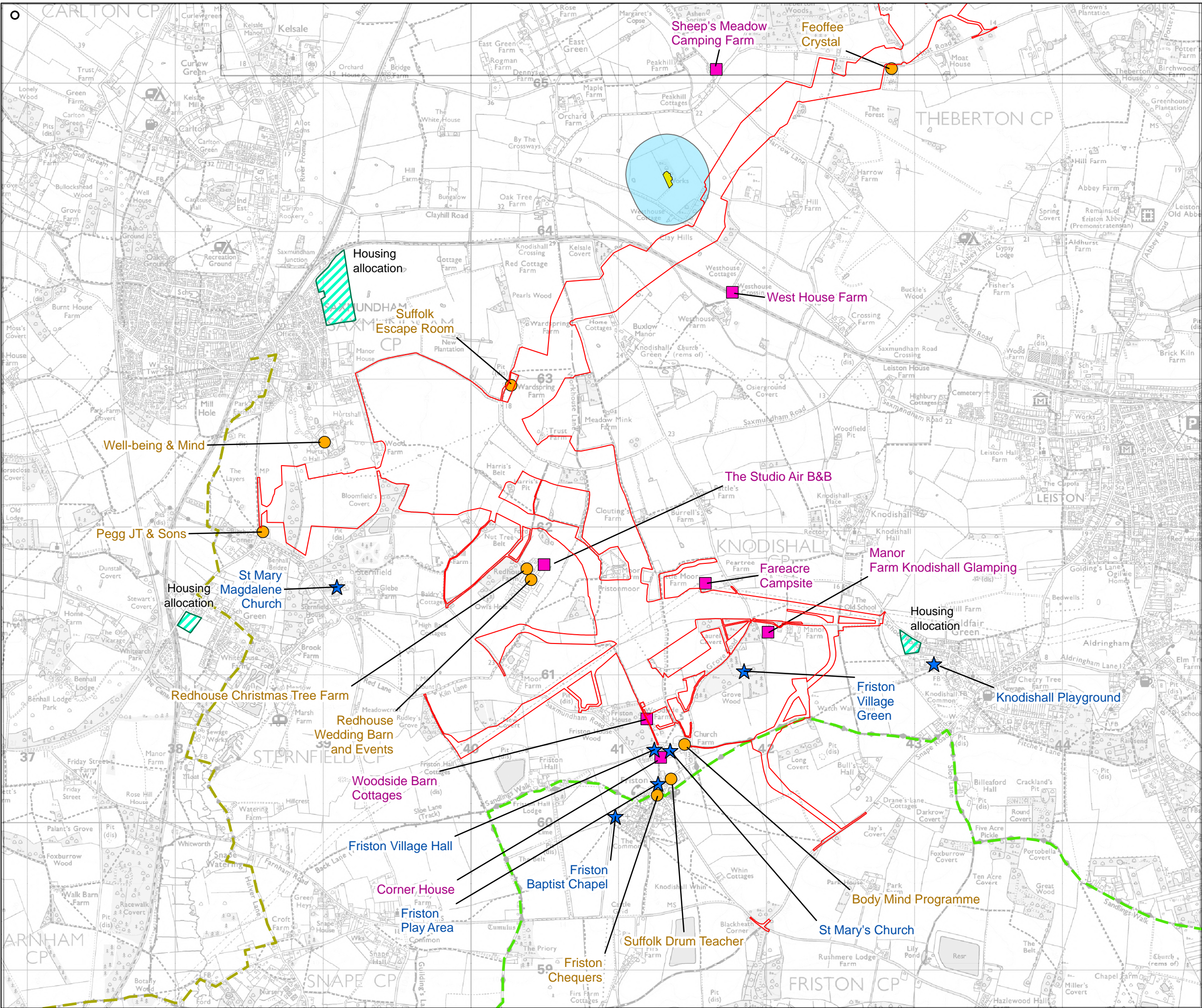
Project Name
LIONLINK

Drawing Title
Figure 16.1 Socio-Economic Study Area

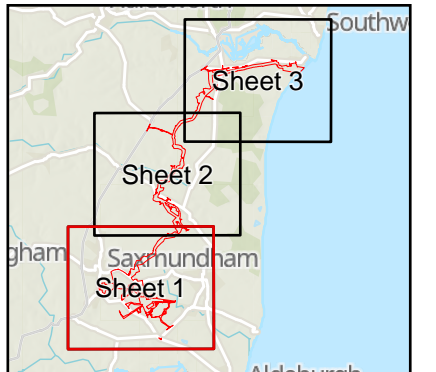
Scale at A3
1:65,000
Role
Environment
Suitability
S2

| | |
|--|------------|
| Project Number 287334-00 | Rev P02 |
| Drawing Number LLK1-ARU-DWG-ENV-00026 | |

A3



- Proposed Onshore Scheme Draft Order Limits
- Community Facilities and Open Space
- Other Local Businesses
- Visitor / Tourism Facilities
- Minerals and Waste Safeguard Area
- Other Mineral Site
- Development Land
- Promoted Recreational Route
- Sandlings Walk
- Alde Valley Walk



Mineral & Waste data provided by Suffolk County Council.
© Crown copyright and database rights 2025 Ordnance Survey
AC000808122
Coordinate System: British National Grid
Meters

| | | | | | |
|-----|------------|----|------|------|-------|
| P02 | 10/02/2025 | AW | JM | CP | CE |
| Rev | Date | By | Chkd | Appd | Authd |

ARUP

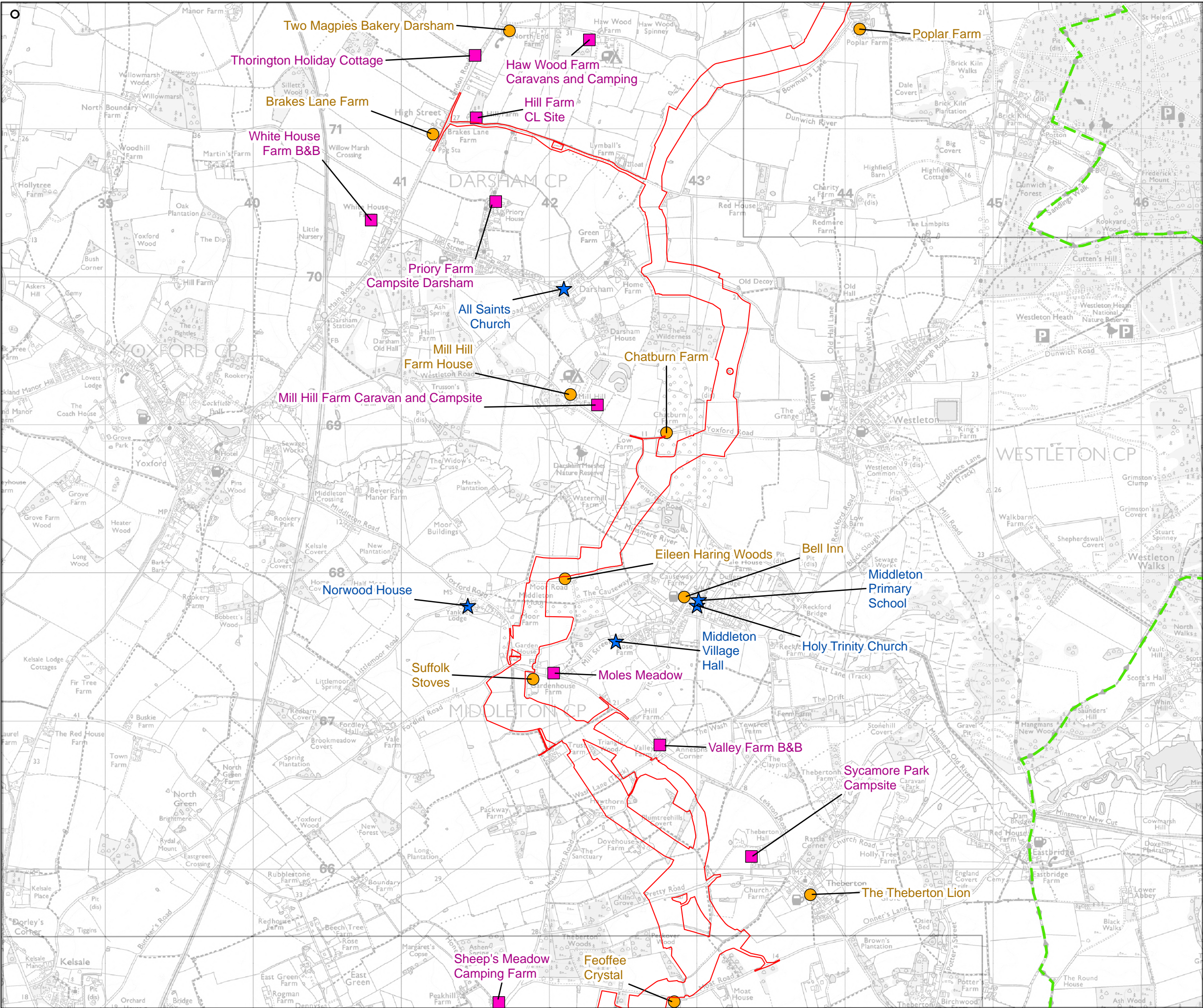
8 Fitzroy Street
London W1T 4BJ
Tel +44 20 7636 1531
www.arup.com

Client
National Grid LionLink Limited (NGLLL)

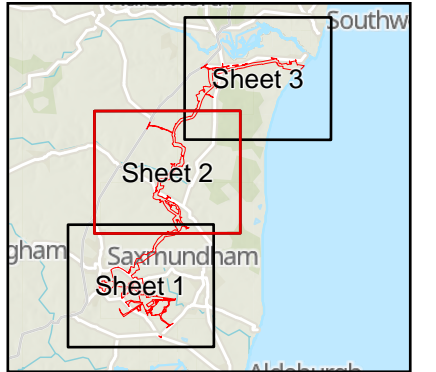
Project Name
LIONLINK

Drawing Title
Figure 16.2 Community Facilities and Open Space, Visitor / Tourism Facilities, Other Local Businesses, Promoted Recreational Routes, and Development Land - Sheet 1

| | |
|----------------|------------------------|
| Scale at A3 | 1:25,000 |
| Role | Environment |
| Suitability | S2 |
| Project Number | 287334-00 |
| Drawing Number | LLK1-ARU-DWG-ENV-00027 |
| Rev | P02 |

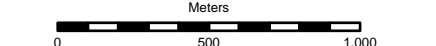


- Proposed Onshore Scheme Draft Order Limits
- Community Facilities and Open Space
- Other Local Businesses
- Visitor / Tourism Facilities
- Promoted Recreational Route
- Sandlings Walk



Mineral & Waste data provided by Suffolk County Council.
© Crown copyright and database rights 2025 Ordnance Survey
AC0000806122

Coordinate System: British National Grid



| P02 | 10/02/2025 | AW | JM | CP | CE |
|-----|------------|----|----|----|----|
|-----|------------|----|----|----|----|

| Rev | Date | By | Chkd | Appd | Authd |
|-----|------|----|------|------|-------|
|-----|------|----|------|------|-------|

ARUP

8 Fitzroy Street
London W1T 4BJ
Tel +44 20 7636 1531
www.arup.com

Client

National Grid LionLink Limited (NGLLL)

Project Name

LIONLINK

Drawing Title
Figure 16.2 Community Facilities and Open Space, Visitor / Tourism Facilities, Other Local Businesses, Promoted Recreational Routes, and Development Land - Sheet 2

Scale at A3

1:25,000

Role

Environment

Suitability

S2

Project Number

287334-00

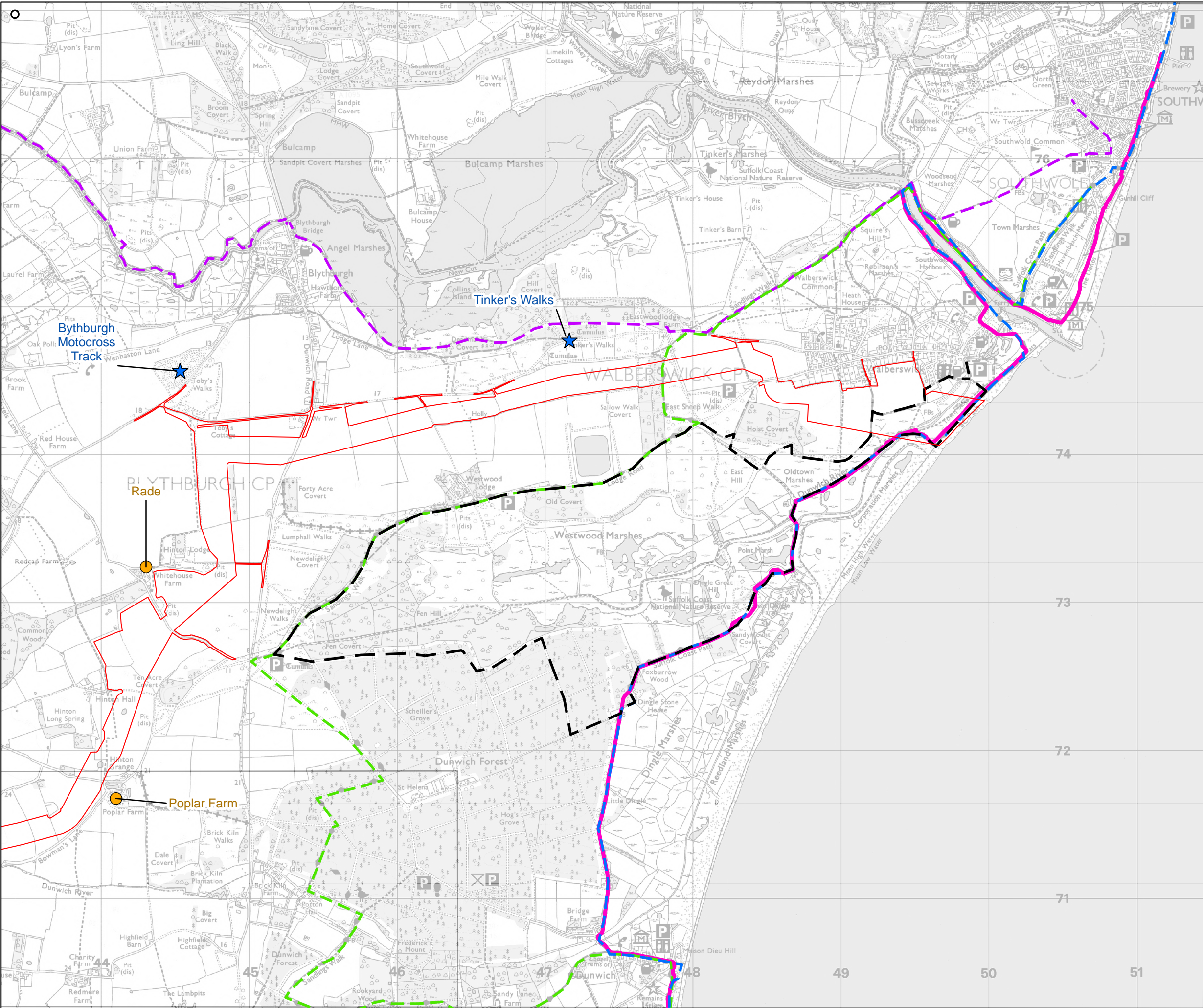
Rev

P02

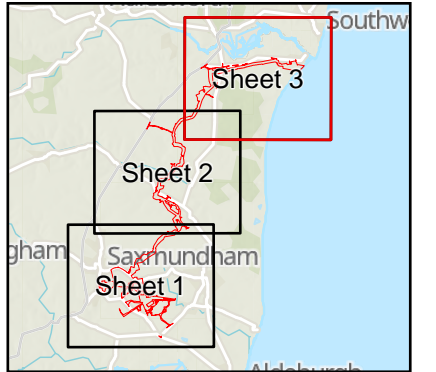
Drawing Number

LLK1-ARU-DWG-ENV-00027

A3



- Proposed Onshore Scheme Draft Order Limits
- Community Facilities and Open Space
- Other Local Businesses
- Promoted Recreational Route
- Halesworth to Southwold
- Sandlings Walk
- Suffolk Coast Path
- Walberswick Circular Walk
- King Charles III England Coast Path (National Trail)



Mineral & Waste data provided by Suffolk County Council.
© Crown copyright and database rights 2025 Ordnance Survey
AC0000806122
Coordinate System: British National Grid

| | | | | | |
|-----------------------|------------|----|------|------|-------|
| 0 500 1,000 Meters | | | | | |
| P02 | 10/02/2025 | AW | JM | CP | CE |
| Rev | Date | By | Chkd | Appd | Authd |

ARUP

8 Fitzroy Street
London W1T 4BJ
Tel +44 20 7636 1531
www.arup.com

Client

National Grid LionLink Limited (NGLLL)

Project Name

LIONLINK

Drawing Title

Figure 16.2 Community Facilities and Open Space, Visitor / Tourism Facilities, Other Local Businesses, Promoted Recreational Routes, and Development Land - Sheet 3

Scale at A3

1:25,000

Role

Environment

Suitability

S2

Project Number

287334-00

Rev

P02

Drawing Number

LLK1-ARU-DWG-ENV-00027

A3