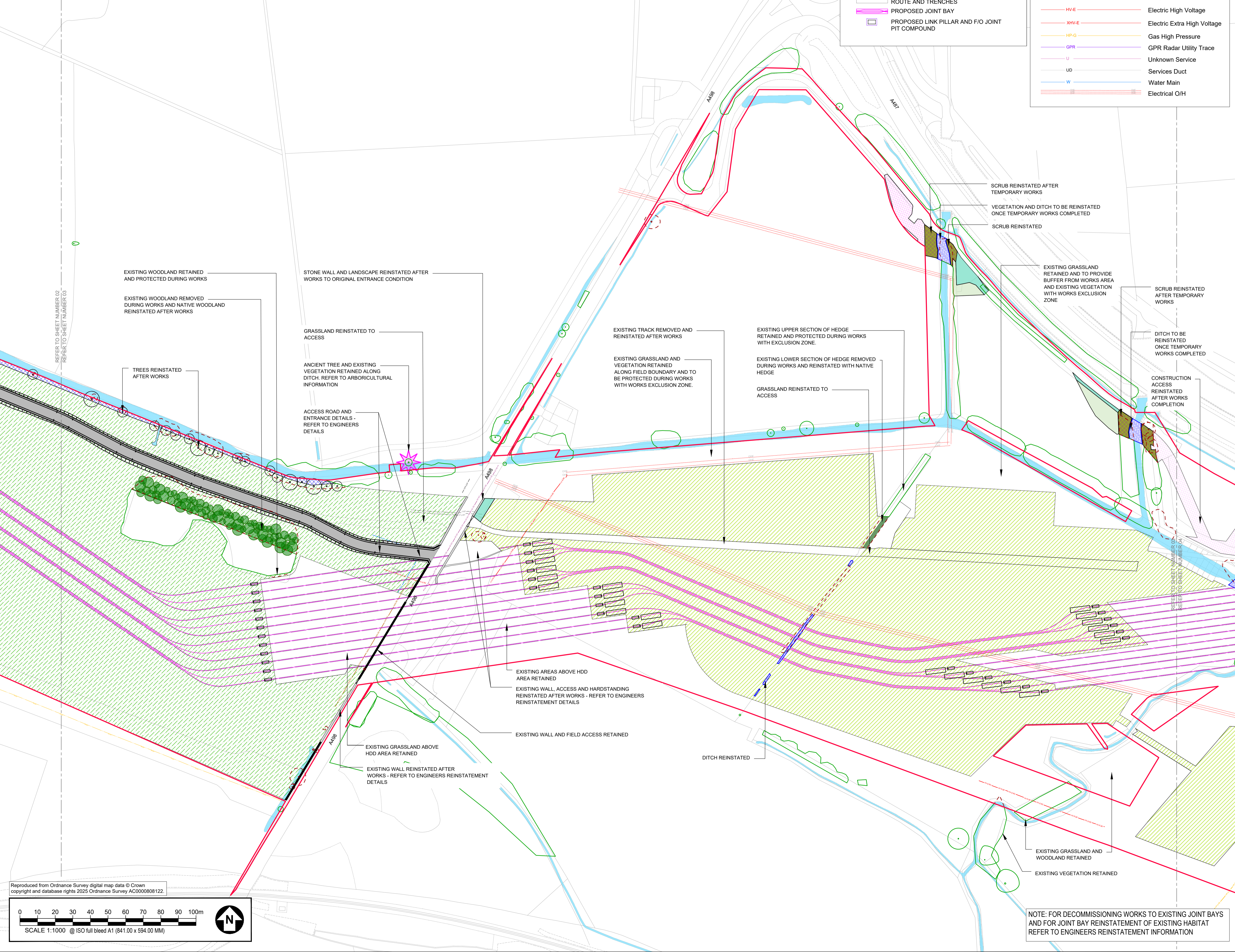


HDD OPTION



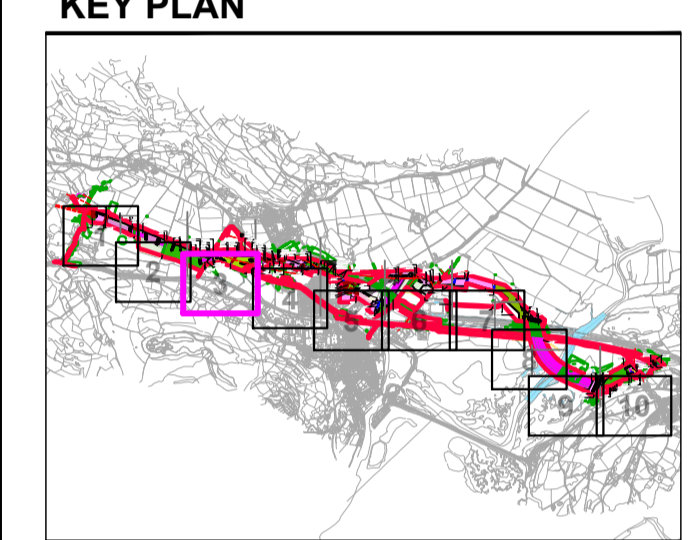
AECOM

PROJECT
Glaslyn Cables

CLIENT
nationalgrid

CONSULTANT
AECOM
2 City Walk
Leeds, LS11 9AR
+44 (0) 113 391 6800 tel
+44 (0) 113 391 6899 fax
www.aecom.com

- GENERAL NOTES**
- DO NOT SCALE FROM THIS DRAWING.
 - DRAWING TO BE PRINTED IN COLOUR.
 - ALL DIMENSIONS IN METRES UNLESS OTHERWISE STATED.
 - EXISTING TREES AND VEGETATION TO BE PROTECTED DURING CONSTRUCTION OF WORKS - REFER TO TREE PROTECTION PLANS AND ARBORICULTURAL REPORT.
 - DRAWING TO BE READ IN CONJUNCTION WITH ENGINEER DWGS. DETAILS AND EXISTING AND PROPOSED UTILITIES INFORMATION.
 - DRAWINGS NOT INTENDED FOR DETAIL OR CONSTRUCTION ISSUE.



- KEY**
- RED LINE BOUNDARY
 - REMOVED TREES, TREE GROUPS AND SCRUB
 - RETAINED TREES, TREE GROUPS AND SCRUB
 - ANCIENT TREE - REFER TO ARBORICULTURAL DWGS AND REPORTS FOR RETAINED, REMOVED AND VETERAN TREES
- LANDSCAPE REINSTATEMENT**
- POOR SEMI IMPROVED GRASSLAND
 - IMPROVED GRASSLAND
 - NEUTRAL GRASSLAND - SEMI IMPROVED
 - SPECIES RICH WILDFLOWER MEADOW
 - AMENITY GRASSLAND
 - ARABLE GRASSLAND
 - MARSHY GRASSLAND
 - MARGINAL VEGETATION
 - SCRUB - SHALLOW ROOTED OVER U/G SERVICES
 - DITCH BED AND BANK
 - RUDERAL GRASSLAND REINSTATEMENT
 - HEDGEROW
 - TREE PLANTING
 - WOODLAND PLANTING
- LANDSCAPE MITIGATION**
- NATIVE TREE PLANTING
 - SCRUB - SHALLOW ROOTED OVER U/G SERVICES

ISSUE/REVISION

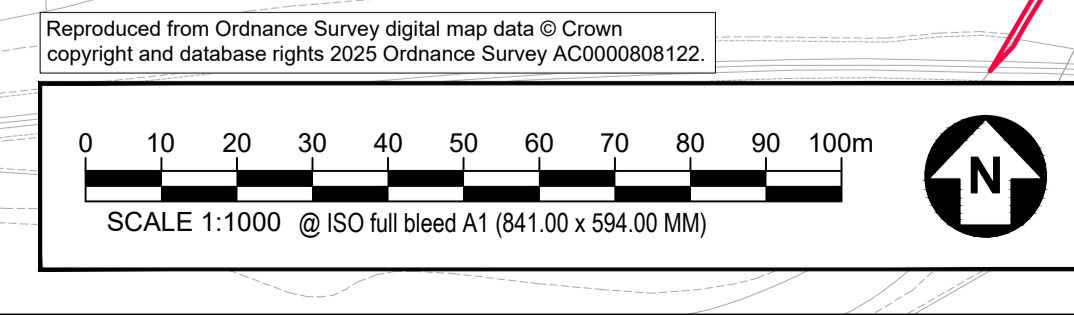
NO	DATE	DESCRIPTION
PO2	16/09/2025	FOR REVIEW AND COMMENT
PO1	05/09/2025	FIRST ISSUE FOR REVIEW AND COMMENT
I/R	DATE	DESCRIPTION

DRAWING STATUS
ISSUE

PROJECT NUMBER
60686216

SHEET TITLE
GLASLYN LANDSCAPE PLAN
SHEET 03
HDD OPTION

SHEET NUMBER **REV.**
PTNO-AEC-ZZZZ-ZZZZZ-DRAW-LA-000014 P02



NOTE: FOR DECOMMISSIONING WORKS TO EXISTING JOINT BAYS AND FOR JOINT BAY REINSTATEMENT OF EXISTING HABITAT REFER TO ENGINEERS REINSTATEMENT INFORMATION

This drawing has been prepared for the use of AECOM's client. It may not be used, modified, reproduced or relied upon by third parties, except as agreed by AECOM or as required by law. AECOM accepts no responsibility, and denies any liability whatsoever, to any party that uses or relies on this drawing without AECOM's express written consent. All measurements must be obtained from the stated dimensions.