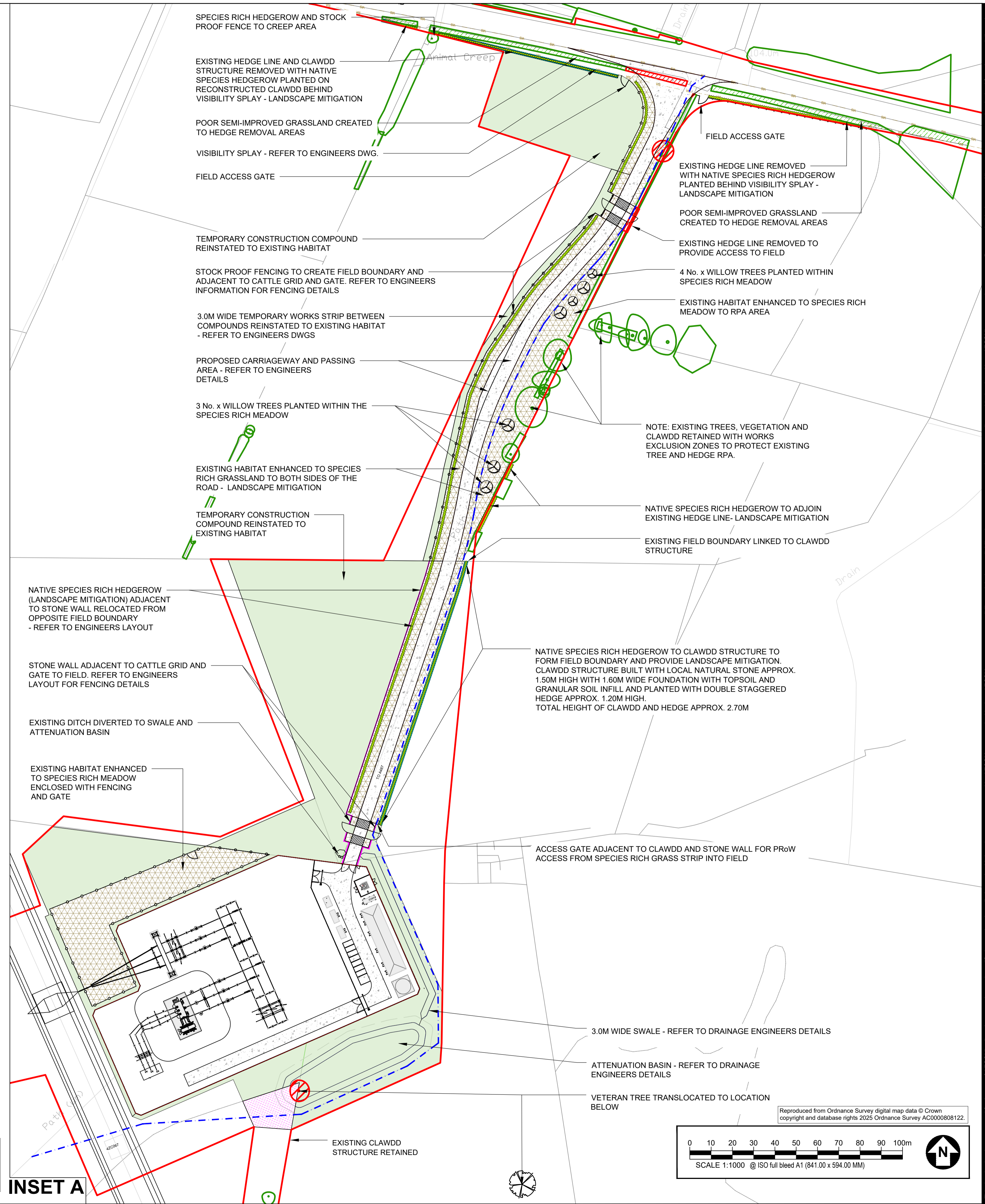
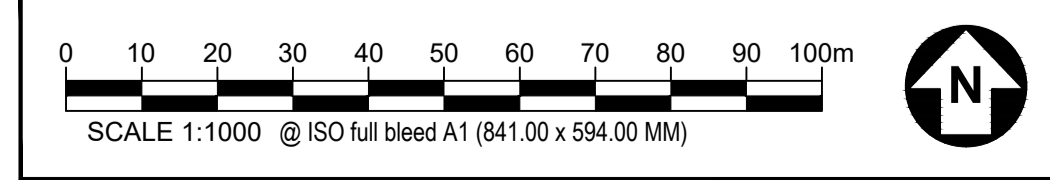



LANDSCAPE PLAN



INSET A



- SPECIES RICH HEDGEROW AND STOCK PROOF FENCE TO CREEP AREA
- EXISTING HEDGE LINE AND CLAWDD STRUCTURE REMOVED WITH NATIVE SPECIES HEDGEROW PLANTED ON RECONSTRUCTED CLAWDD BEHIND VISIBILITY SPLAY - LANDSCAPE MITIGATION
- POOR SEMI-IMPROVED GRASSLAND CREATED TO HEDGE REMOVAL AREAS
- VISIBILITY SPLAY - REFER TO ENGINEERS DWG.
- FIELD ACCESS GATE
- TEMPORARY CONSTRUCTION COMPOUND REINSTATED TO EXISTING HABITAT
- STOCK PROOF FENCING TO CREATE FIELD BOUNDARY AND ADJACENT TO CATTLE GRID AND GATE. REFER TO ENGINEERS INFORMATION FOR FENCING DETAILS
- 3.0M WIDE TEMPORARY WORKS STRIP BETWEEN COMPOUNDS REINSTATED TO EXISTING HABITAT - REFER TO ENGINEERS DWGS
- PROPOSED CARRIAGEWAY AND PASSING AREA - REFER TO ENGINEERS DETAILS
- 3 No. x WILLOW TREES PLANTED WITHIN THE SPECIES RICH MEADOW
- EXISTING HABITAT ENHANCED TO SPECIES RICH GRASSLAND TO BOTH SIDES OF THE ROAD - LANDSCAPE MITIGATION
- TEMPORARY CONSTRUCTION COMPOUND REINSTATED TO EXISTING HABITAT
- NATIVE SPECIES RICH HEDGEROW (LANDSCAPE MITIGATION) ADJACENT TO STONE WALL RELOCATED FROM OPPOSITE FIELD BOUNDARY - REFER TO ENGINEERS LAYOUT
- STONE WALL ADJACENT TO CATTLE GRID AND GATE TO FIELD. REFER TO ENGINEERS LAYOUT FOR FENCING DETAILS
- EXISTING DITCH DIVERTED TO SWALE AND ATTENUATION BASIN
- EXISTING HABITAT ENHANCED TO SPECIES RICH MEADOW ENCLOSED WITH FENCING AND GATE
- FIELD ACCESS GATE
- EXISTING HEDGE LINE REMOVED WITH NATIVE SPECIES RICH HEDGEROW PLANTED BEHIND VISIBILITY SPLAY - LANDSCAPE MITIGATION
- POOR SEMI-IMPROVED GRASSLAND CREATED TO HEDGE REMOVAL AREAS
- EXISTING HEDGE LINE REMOVED TO PROVIDE ACCESS TO FIELD
- 4 No. x WILLOW TREES PLANTED WITHIN SPECIES RICH MEADOW
- EXISTING HABITAT ENHANCED TO SPECIES RICH MEADOW TO RPA AREA
- NOTE: EXISTING TREES, VEGETATION AND CLAWDD RETAINED WITH WORKS EXCLUSION ZONES TO PROTECT EXISTING TREE AND HEDGE RPA.
- NATIVE SPECIES RICH HEDGEROW TO ADJOIN EXISTING HEDGE LINE- LANDSCAPE MITIGATION
- EXISTING FIELD BOUNDARY LINKED TO CLAWDD STRUCTURE
- NATIVE SPECIES RICH HEDGEROW TO CLAWDD STRUCTURE TO FORM FIELD BOUNDARY AND PROVIDE LANDSCAPE MITIGATION. CLAWDD STRUCTURE BUILT WITH LOCAL NATURAL STONE APPROX. 1.50M HIGH WITH 1.60M WIDE FOUNDATION WITH TOPSOIL AND GRANULAR SOIL INFILL AND PLANTED WITH DOUBLE STAGGERED HEDGE APPROX. 1.20M HIGH. TOTAL HEIGHT OF CLAWDD AND HEDGE APPROX. 2.70M
- ACCESS GATE ADJACENT TO CLAWDD AND STONE WALL FOR PRoW ACCESS FROM SPECIES RICH GRASS STRIP INTO FIELD
- 3.0M WIDE SWALE - REFER TO DRAINAGE ENGINEERS DETAILS
- ATTENUATION BASIN - REFER TO DRAINAGE ENGINEERS DETAILS
- VETERAN TREE TRANSLOCATED TO LOCATION BELOW
- EXISTING CLAWDD STRUCTURE RETAINED



PROJECT
Bryncir

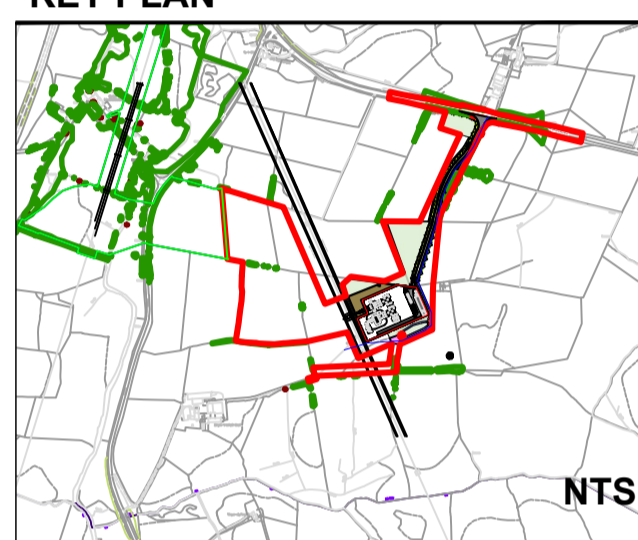
CLIENT
nationalgrid

CONSULTANT
AECOM
2 City Walk
Leeds, LS11 9AR
+44 (0) 113 391 6800 tel
+44 (0) 113 391 6899 fax
www.aecom.com

GENERAL NOTES

1. DO NOT SCALE FROM THIS DRAWING.
2. DRAWING TO BE PRINTED IN COLOUR.
3. ALL DIMENSIONS IN METRES UNLESS OTHERWISE STATED.
4. EXISTING TREES AND VEGETATION TO BE PROTECTED DURING CONSTRUCTION OF WORKS - REFER TO TREE PROTECTION PLANS AND ARBORICULTURAL REPORT.
5. DRAWING TO BE READ IN CONJUNCTION WITH ENGINEER DWGS AND DETAILS AND EXISTING AND PROPOSED UTILITIES INFORMATION.

KEY PLAN



KEY

- RED LINE BOUNDARY
- PRoW
- RETAINED TREES AND VEGETATION
- REMOVED TREES AND VEGETATION
- VETERAN TREE TRANSLOCATED
- LANDSCAPE REINSTATEMENT**
- IMPROVED GRASSLAND
- MARSHY GRASSLAND
- LANDSCAPE MITIGATION**
- NATIVE SPECIES RICH HEDGEROW
- NATIVE SPECIES RICH HEDGEROW TO CLAWDD STRUCTURE
- NATIVE TREE PLANTING
- EXISTING HABITAT ENHANCED TO SPECIES RICH MEADOW
- POOR SEMI-IMPROVED GRASSLAND

REFER TO ENGINEERS DWGS FOR HARDWORKS INFORMATION

ISSUE/REVISION

NO	DATE	DESCRIPTION
P03	16.09.25	FOR REVIEW/COMMENT
P02	03.09.25	FOR REVIEW/COMMENT
P01	22.08.25	FOR REVIEW/COMMENT
IVR		

DRAWING STATUS
PLANNING

PROJECT NUMBER
60686216

SHEET TITLE
BRYNCIR
LANDSCAPE PLAN

SHEET NUMBER **REV.**
PTNO-AEC-ZZZZ-ZZZZZZ-DRWL-0-000001 P03

This drawing has been prepared for the use of AECOM's Client. It may not be used, modified, reproduced or relied upon by third parties, except as agreed by AECOM or as required by law. AECOM accepts no responsibility, and denies any liability whatsoever, to any party that uses or relies on this drawing without AECOM's express written consent. Do not scale this document. All measurements must be obtained from the stated dimensions.