

For Planning

GENERAL NOTES

- DO NOT SCALE THIS DRAWING.
- ALL BAKERHICKS DRAWINGS ARE TO BE READ IN CONJUNCTION WITH THE GENERAL NOTES DRAWINGS, THE RELEVANT BAKERHICKS SPECIFICATIONS AND ALL RELEVANT ARCHITECTS AND SERVICE ENGINEER'S DRAWINGS AND SPECIFICATION.
- ALL LEVELS ARE IN METRES ABOVE ORDINANCE DATUM.
- ALL DIMENSIONS ARE IN MILLIMETRES UNLESS NOTED OTHERWISE. STRUCTURAL LEVELS IN METRES UNLESS NOTED OTHERWISE AND RELATIVE TO ORDNANCE DATUM.
- DO NOT SCALE ANY ARCHITECTURAL DRAWINGS OR DIGITAL DATA. IF IN DOUBT ASK WORK TO FIGURED DIMENSIONS ONLY. ANY DISCREPANCIES IN DIMENSIONS ARE TO BE REFERRED TO ENGINEER AND ARCHITECT BEFORE WORK IS PUT TO HAND.
- ALL DIMENSIONS MUST BE VERIFIED ON SITE. CONTRACTOR TO NOTIFY ENGINEER AND ARCHITECT OF DISCREPANCIES BETWEEN ARCHITECTURAL DRAWINGS, SPECIFICATIONS AND OTHER RELEVANT DRAWINGS.
- REVISION NOTES ARE FOR GUIDANCE ONLY. FOR SPECIFIC DETAILS, REFER TO CLOUDED AREA ON DRAWINGS FOR MOST RECENT AMENDMENTS.
- ALL DIMENSIONS AND LEVELS ARE TO BE CHECKED ON SITE BY THE CONTRACTOR OR THEIR SUBCONTRACTOR PRIOR TO PREPARING ANY WORKING DRAWINGS OR COMMENCING ON SITE.
- ALL WORK HAS TO BE CARRIED OUT WITH THE REQUIREMENTS OF THE RELEVANT STATUTORY AUTHORITIES AND REGULATIONS.
- ALL PROPRIETARY PRODUCTS TO BE AS SPECIFIED OR EQUAL APPROVED.
- THE CONTRACTOR SHALL BE RESPONSIBLE FOR THE DESIGN, FABRICATION, ERECTION AND REMOVAL OF ALL TEMPORARY WORKS ASSOCIATED WITH SAFE ERECTION.
- SETTING OUT IN ACCORDANCE WITH BS 5964-1 AND BS 5606. BUILDING CONSTRUCTION TOLERANCES IN ACCORDANCE WITH BS EN 13670 CLASS 1.
- ALL PROPOSED MATERIALS & PROPOSED BUILDING WORKS SHALL MEET THE REQUIREMENTS OF WITH TS 3.10.02 AND TS3.10.06 RESPECTIVELY



KEYPLAN

FIRE STRATEGY NOTES

BOUNDARY CONDITION / UNPROTECTED AREAS
THE PROXIMITY OF THE BUILDING TO THE SITE OWNERSHIP BOUNDARY / CENTRE LINE OF THE ROADS HAS RESULTED IN NO BOUNDARY REQUIRED.

THIS HAS BEEN BASED UPON - APPROVED DOCUMENT PART B (VOLUME 2) - TABLE 13.1 PERMITTED UNPROTECTED AREAS IN SMALL BUILDINGS OR COMPARTMENTS.

FIRE RATING TO WALLS
FROM APPROVED DOCUMENT PART B (VOLUME 2) - TABLE B2, THE REQUIRED FIRE RATING OF THE EXTERNAL WALLS, INTERNAL WALLS AND DOORS HAS BEEN ESTABLISHED AS 60 MINUTES. FOR THE PURPOSES OF ESTABLISHING THE ABOVE FIRE RESISTANCE THE FOLLOWING HAVE BEEN ASSUMED:
- BUILDING PURPOSE GROUP IS INDUSTRIAL
- BUILDING CONTROL INTERPRET THE CABLE AREA AS NOT BEING A BASEMENT
- THE HIGHEST FLOOR LEVEL IS LESS THAN 5M ABOVE GROUND LEVEL.

ELEMENTS OF STRUCTURE

STRUCTURAL ELEMENTS TO BE FIRE PROTECTED AS REQUIRED. REFER TO THE STRUCTURAL ENGINEERS DETAILS.

TRAVEL DISTANCES
FROM APPROVED DOCUMENT PART B (VOLUME 2) - TABLE 2.1 - LIMITATIONS ON TRAVEL DISTANCE

FOR THE PURPOSES OF ESTABLISHING THE TRAVEL DISTANCES THE FOLLOWING HAVE BEEN ASSUMED:
BUILDING PURPOSE GROUP IS INDUSTRIAL
BUILDING ASSUMED TO BE NORMAL HAZARD. BATTERY ROOM TO BE CONSIDERED HIGHER HAZARD.
INTERNAL LAYOUTS OF ROOMS KNOWN.

THEREFORE MAXIMUM TRAVEL DISTANCES ARE:
IN TWO DIRECTIONS 45 M
IN ONE DIRECTION 25 M
HIGHER HAZARD IN ONE DIRECTION 12 M

SERVICES OPENINGS

ALL SERVICES PASSING THROUGH FIRE RATED CONSTRUCTIONS TO BE FIRE STOPPED WITH TESTED AND CERTIFIED METHODS AND PRODUCTS. THE DESIGN AND INSTALLATION OF FIRE STOPPING TO BE CARRIED OUT BY A SPECIALIST

FIRE STRATEGY KEY

- 60 MINUTE FIRE RESISTANT CONSTRUCTION
- FINAL EXIT
- VCB VERTICAL CAVITY BARRIER
- FD60s 60 MINUTE FIRE RESISTANT DOOR
- START OF ESCAPE DISTANCE
- END OF ESCAPE DISTANCE
- FIRE EXIT SIGN WALL MOUNTED - FINAL EXIT

ADDITIONAL FIRE / STATUTORY SIGNAGE MAY BE REQUIRED BY BUILDING CONTROL / FIRE OFFICER.

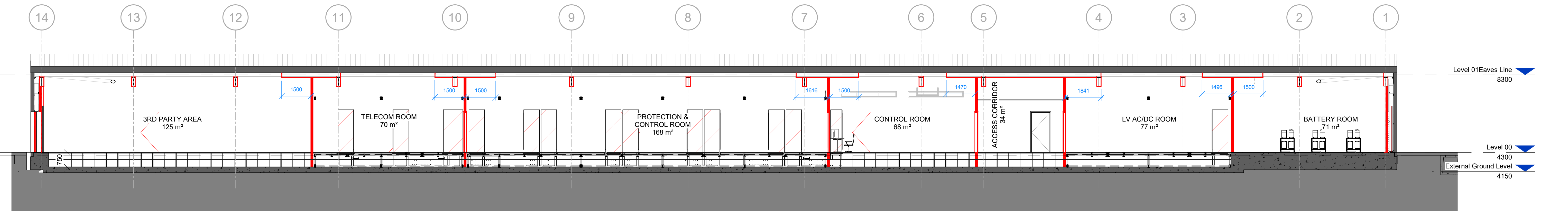
REFER TO ELECTRICAL DRAWINGS FOR ILLUMINATED FINAL EXIT SIGNS.

ILLUMINATED SIGNAGE AND CALL POINTS SUBJECT TO FINAL COORDINATION WITH ELECTRICAL ENGINEERS.

NOTE:

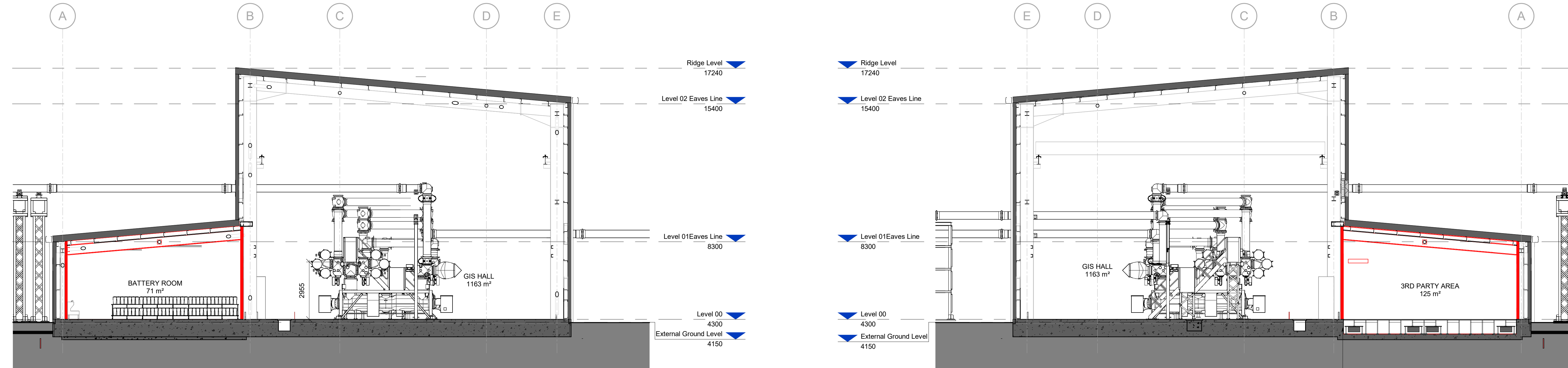
STRUCTURAL ENGINEERS AND MECHANICAL ENGINEER MODEL TO BE CO-ORDINATED

PRINT IN COLOUR



Fire Strategy Section 01

Scale: 1 : 100

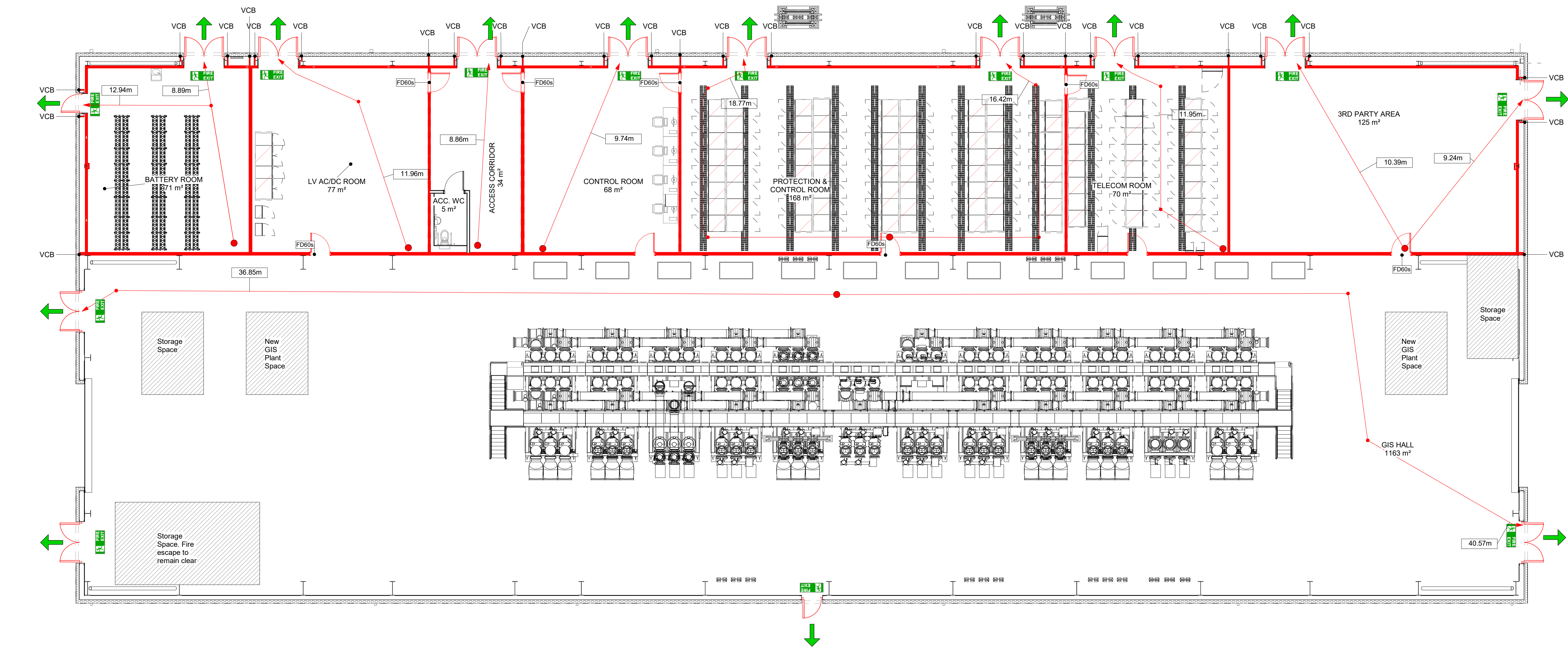


Fire Strategy Section 02

Scale: 1 : 100

Fire Strategy Section 03

Scale: 1 : 100



00_FireStrategy_Plan

Scale: 1 : 100

nationalgrid

P06	S4 - Suitable for Review & Authorisation by Lead Appointed Party. Issued to LOR for Review	OTI	OTI/IPC	21/08/25
P05	S3 For Review and Comment. Planning Strategy: updated following feedback with LPT	OTI	PC/RC	06/08/25
P04	S3 Suitable for Review & Comment. Issued for Comment	GA	OTI/RW	21/07/25
P03	S3 Suitable for Review & Comment. Issued for Comment	OTI	OTI/RC	30/06/25
P02	Issued for planning, comments incorporated following client feedback	GP	OTI/RC	24/04/25
P01	Final Issue S3	MQ	OTI/JK	17/02/25
Rev	Description	Chd	Chk'd / App'd	Date

PRELIMINARY

Master Scheme No: 101677

Sub-Scheme No: 101677

Site: MARGAM

Scheme Name: Margam Connection

Document Title: Margam GIS Hall - Fire Strategy Level 00

Created by: MQ

Date: 22/11/24

Checked by: OTI

Date: 22/11/24

Approved by: JK

Date: 22/11/24

Development Eng: DWG

Scale: 1 : 100

Form: A0

Sheet(s): 1 OF 1

Rev: P06

National Grid Document Number: 20_LOR_0012

MARPT-BHK-01-00-DG-A-200601