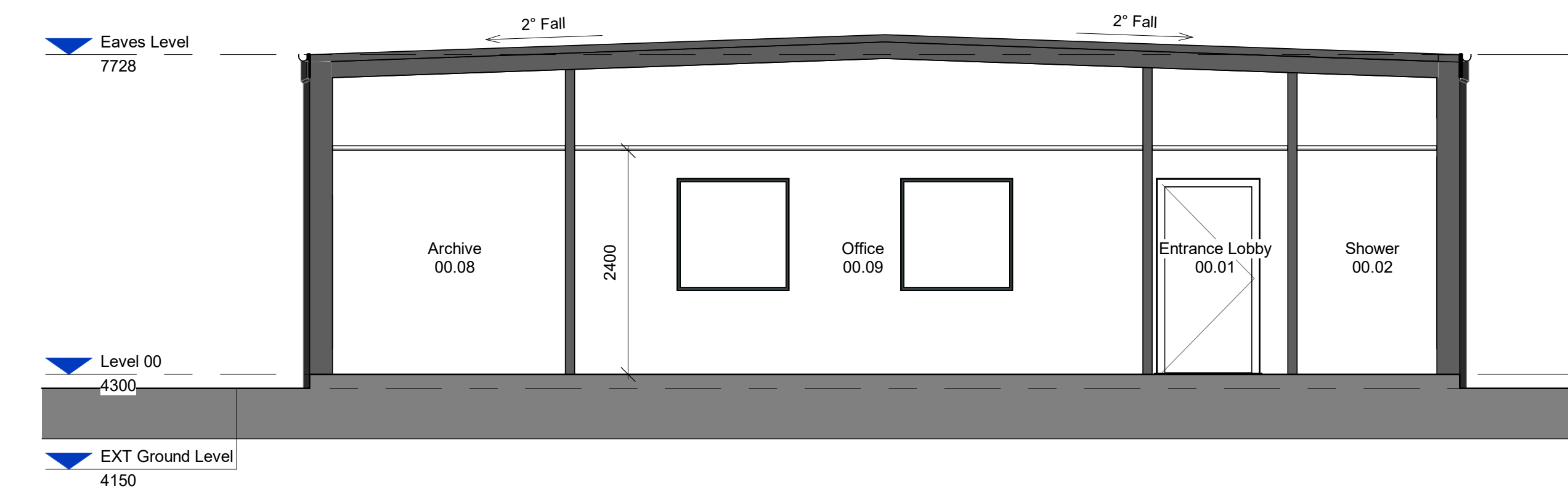


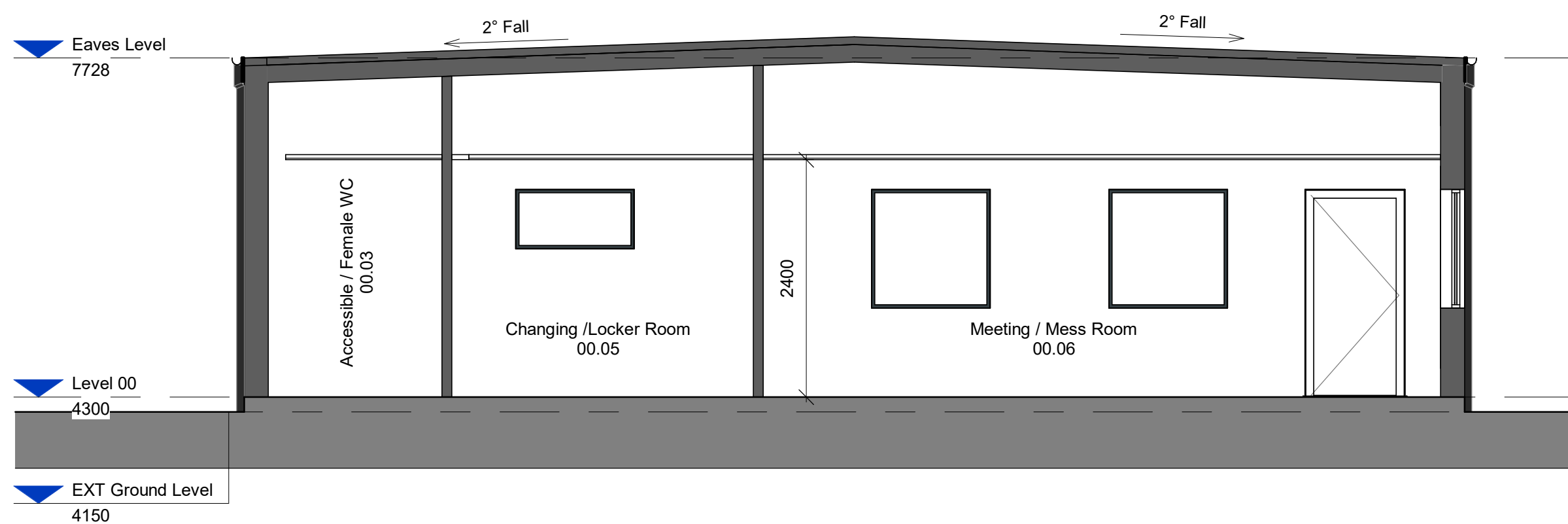
1 General Arrangement\_Section AA

Scale: 1 : 50



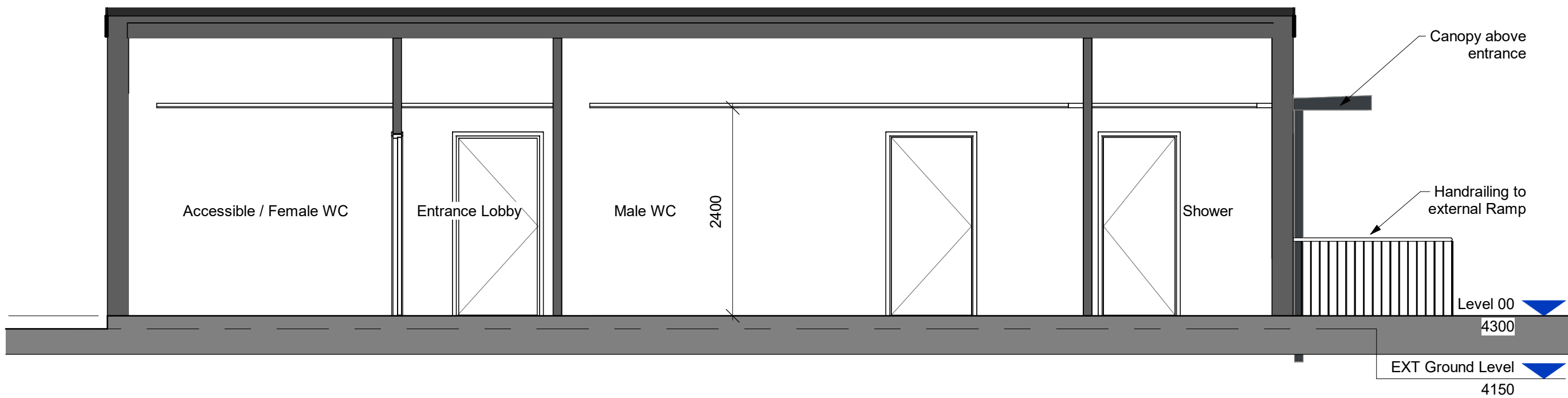
2 General Arrangement\_Section BB

Scale: 1 : 50



3 General Arrangement\_Section CC

Scale: 1 : 50



4 General Arrangement\_Section DD

Scale: 1 : 50



For  
Planning

#### GENERAL NOTES

ALL BAKERHICKS DRAWINGS ARE TO BE READ IN CONJUNCTION WITH THE GENERAL NOTES DRAWINGS, THE RELEVANT BAKERHICKS SPECIFICATIONS AND ALL RELEVANT ARCHITECTS AND SERVICE ENGINEERS DRAWINGS AND SPECIFICATION.

ALL LEVELS ARE IN METRES ABOVE ORDINANCE DATUM.

ALL DIMENSIONS ARE IN MILLIMETRES (U.N.O.)

DO NOT SCALE ANY ENGINEERING DRAWINGS OR DIGITAL DATA. IF IN DOUBT ASK, WORK TO FIGURED DIMENSIONS ONLY. ANY DISCREPANCIES IN DIMENSIONS ARE TO BE REFERRED TO ENGINEER BEFORE WORK IS PUT TO HAND.

THE CONTRACTOR MUST ADVISE THE ARCHITECT AND ENGINEER OF ANY DISCREPANCIES BETWEEN THE CONTRACT DRAWINGS AND/OR SITE CONDITIONS / DIMENSIONS AT THE EARLIEST POSSIBLE OPPORTUNITY.

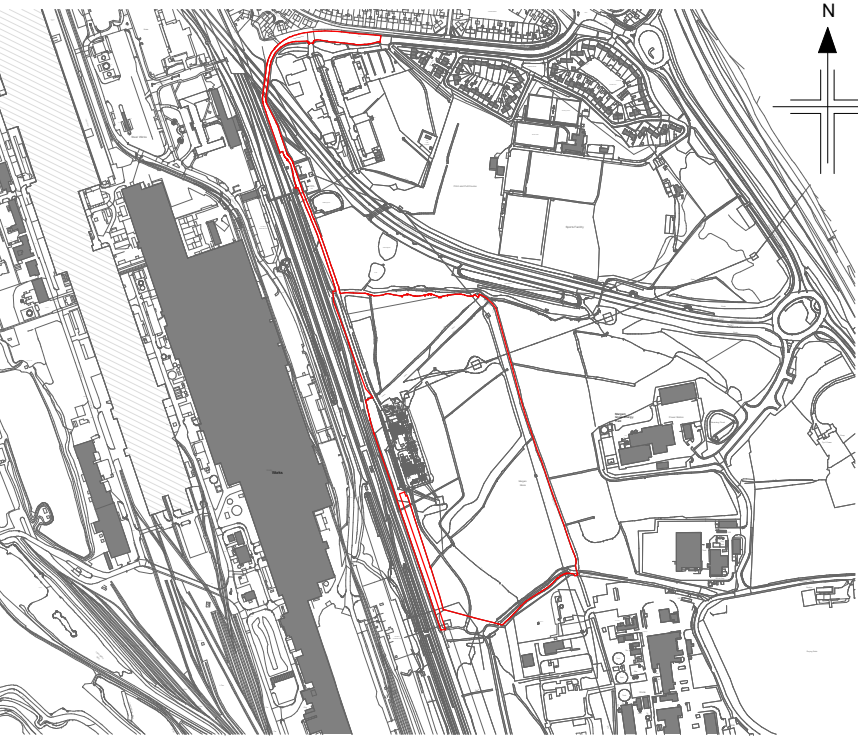
REVISION NOTES ARE FOR GUIDANCE ONLY. FOR SPECIFIC DETAILS, REFER TO CLOUDED AREA ON DRAWINGS FOR MOST RECENT AMENDMENTS.

ALL DIMENSIONS AND LEVELS ARE TO BE CHECKED ON SITE BY THE CONTRACTOR OR HIS SUBCONTRACTOR PRIOR TO PREPARING ANY WORKING DRAWINGS OR COMMENCING ON SITE.

ALL WORK HAS TO BE CARRIED OUT WITH THE REQUIREMENTS OF THE RELEVANT STATUTORY AUTHORITIES AND REGULATIONS.

ALL METHOD STATEMENTS SHOULD BE SUBMITTED TO THE ARCHITECT / CDM PRINCIPAL DESIGNER AND ENGINEER FOR REVIEW AT LEAST TWO WEEKS BEFORE CARRYING OUT THE SAD WORKS.

ALL PROPRIETARY PRODUCTS TO BE AS SPECIFIED OR EQUAL APPROVED.



KEYPLAN

P05	S3 For Review and Comment: Planning drawings updated following feedback with NPT	AL	OTr / PC	05/08/25
P04	Issued for planning, comments incorporated following client feedback	GP	OTr / RC	24/04/25
P03	Updated drawing to reflect material changes as agreed with LOR	MY	OTr / RW	24/02/25
P02	For Planning	MY	OTr / RW	10/02/25
P01	Issued For Comment	OTr	JM / JK	20/01/25
Rev	Description	Cre'd	Chk'd / App'd	Date

**nationalgrid**

Master Scheme No:	Sub-Scheme No:	Site:
101677		MARGAM

Scheme Name:
Margam Substation

Document Title:

Margam Amenities Building - (General Arrangement Sections)

Created by:	Date:	Checked by:	Date:	Approved by:	Date:
MQ	16/01/25	JM	16/01/25	JK	16/01/25

Development Eng:	Document Type:	Scale:	Format:	Sheet(s):	Rev:
DWG		1 : 50	A1	1 OF 1	P05

National Grid Document Number:
20_LOR_0047

FEED Document Number:
MARPT-BHK-01-ZZ-DG-A-203501