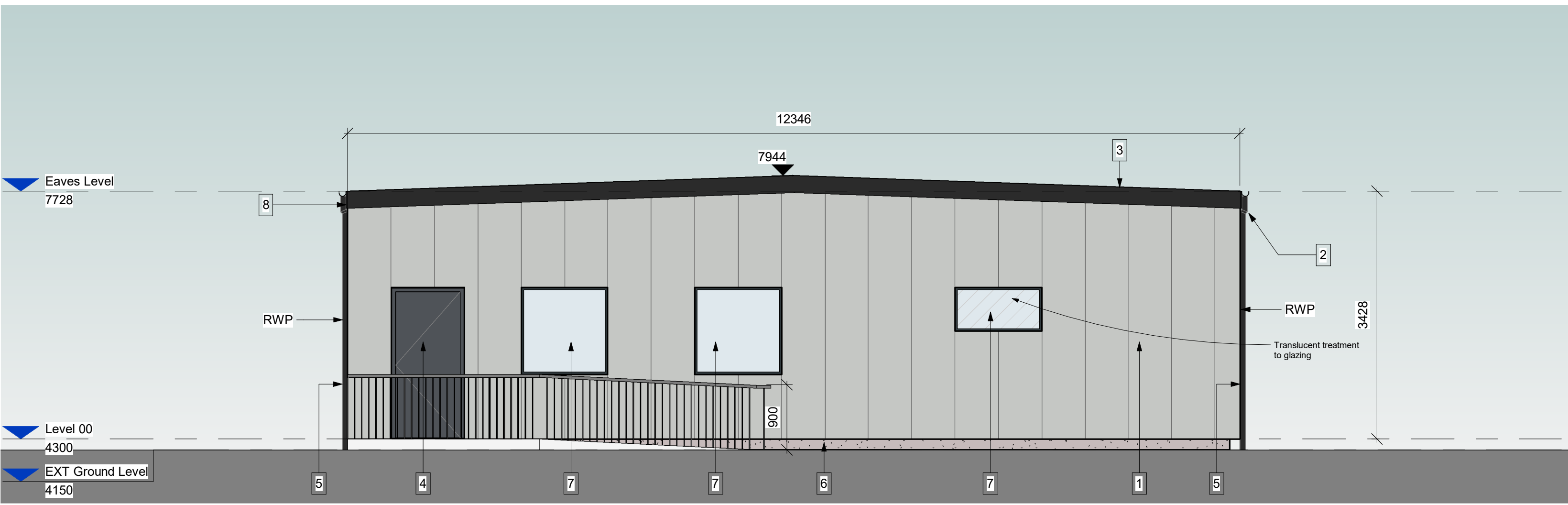
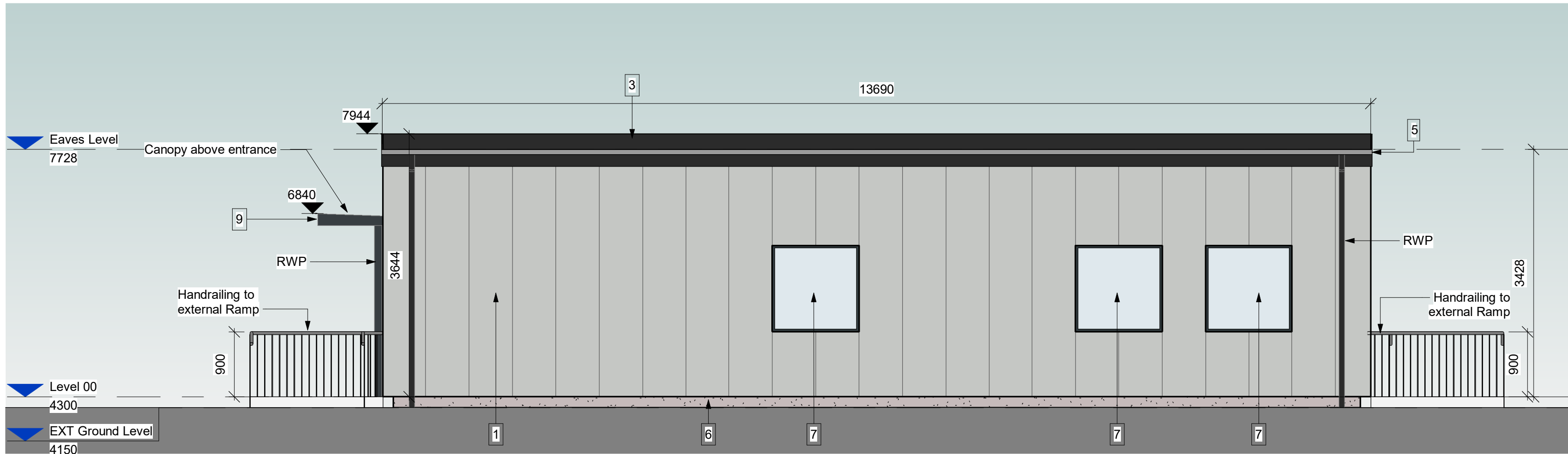


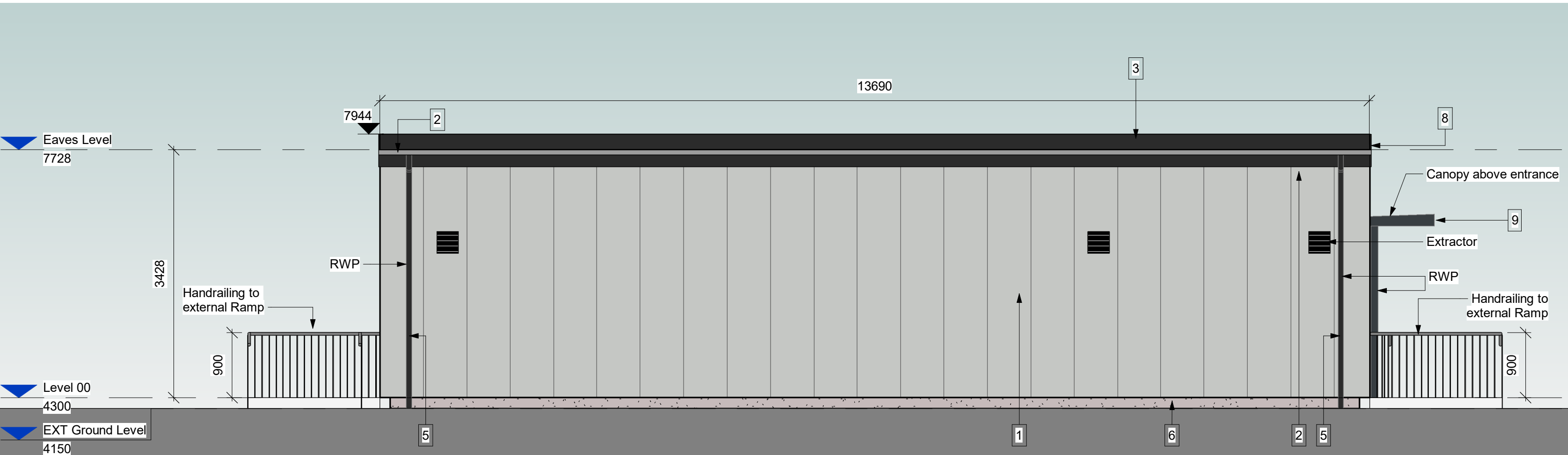
1 General Arrangement_North Elevation
Scale: 1 : 50



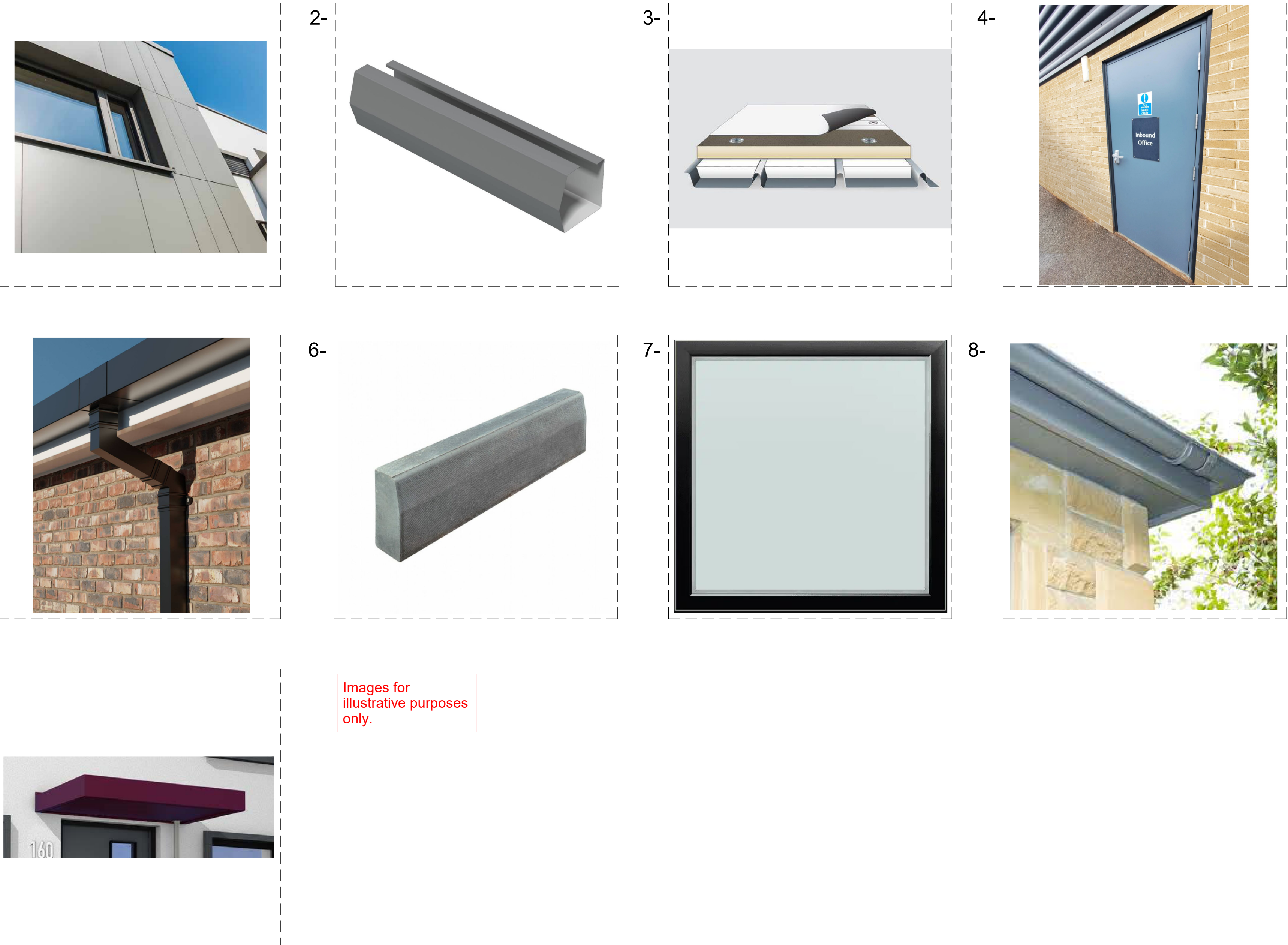
2 General Arrangement_South Elevation
Scale: 1 : 50



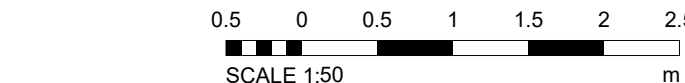
3 General Arrangement_West Elevation
Scale: 1 : 50



4 General Arrangement_East Elevation
Scale: 1 : 50



Proposed Materials				
NUMBERS	ITEMS	DESCRIPTION	RAL	MATERIAL COLOUR LEGEND
1-	External wall cladding	Basalt stone facade panel	7035	
2-	Gutter system	Steel gutter - black	9005	
3-	Single ply membrane roof	EPDM single ply membrane roof - dark grey	9004	
4-	External single door	General purpose hinged steel door - powder coated - grey	7015	
5-	Rain water pipe	Aluminium rainwater pipe - powder coated - black	9005	
6-	Kerb upstand	Concrete kerb upstand		
7-	Window	Aluminium framed solid panel window - grey	7016	
8-	Cill, verge, head and cill Flashings	Aluminium flashings	9004	
9-	Door canopy	Powder coated aluminium door canopy - grey	7016	



For
Planning

GENERAL NOTES

ALL BAKERHICKS DRAWINGS ARE TO BE READ IN CONJUNCTION WITH THE GENERAL NOTES DRAWINGS, THE RELEVANT BAKERHICKS SPECIFICATIONS AND ALL RELEVANT ARCHITECTS AND SERVICE ENGINEERS DRAWINGS AND SPECIFICATION.

ALL DIMENSIONS ARE IN MILLIMETRES (UNDO).

ALL LEVELS ARE IN METRES ABOVE ORDNANCE DATUM.

DO NOT SCALE ANY ENGINEERING DRAWINGS OR DIGITAL DATA. IF IN DOUBT ASK WORK TO FURNISH DIMENSIONS ONLY ANY DISCREPANCIES IN DIMENSIONS ARE TO BE REFERRED TO ENGINEER BEFORE WORK IS PUT TO HAND.

THE CONTRACTOR MUST ADVISE THE ARCHITECT AND ENGINEER OF ANY DISCREPANCIES BETWEEN THE CONTRACT DRAWINGS AND/OR SITE CONDITIONS / DIMENSIONS AT THE EARLIEST POSSIBLE OPPORTUNITY.

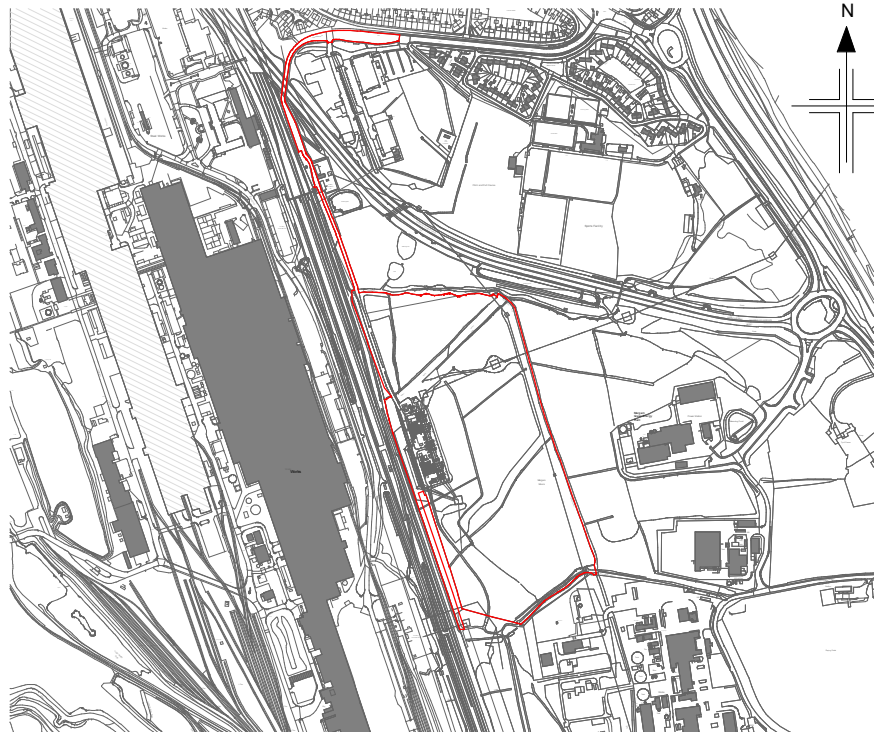
REVISION NOTES ARE FOR GUIDANCE ONLY FOR SPECIFIC DETAILS. REFER TO CLOUDED AREA ON DRAWINGS FOR MOST RECENT AMENDMENTS.

ALL DIMENSIONS AND LEVELS ARE TO BE CHECKED ON SITE BY THE CONTRACTOR OR HIS SUB-CONTRACTOR PRIOR TO PREPARING ANY WORKING DRAWINGS OR COMMENCING ON SITE.

ALL WORK HAS TO BE CARRIED OUT WITH THE REQUIREMENTS OF THE RELEVANT STATUTORY AUTHORITIES AND REGULATIONS.

ALL METHOD STATEMENTS SHOULD BE SUBMITTED TO THE ARCHITECT / CDM PRINCIPAL DESIGNER AND ENGINEER FOR REVIEW AT LEAST TWO WEEKS BEFORE CARRYING OUT THE SAID WORKS.

ALL PROPRIETARY PRODUCTS TO BE AS SPECIFIED OR EQUAL APPROVED.



KEYPLAN

PO5	[S] For Review and Comment: Planning drawings updated following feedback with NPT	AL	OTI / PC	05/08/25
PO4	Issued for planning, comments incorporated following client feedback	GP	OTI / RC	24/04/25
PO3	Updated drawing to reflect material changes as agreed with LOR	MY	OTI / RW	24/02/25
PO2	For Planning	MY	OTI / RW	10/02/25
PO1	Issued For Comment	OTI	JM / JK	20/01/25
Rev	Description	Coord	Checked / Approved	Date

nationalgrid

Master Scheme No:	Sub-Scheme No:	Site:
101677		MARGAM
Scheme Name:		
Margam Substation		
Document Title:		
Margam Amenities Building - (Proposed Elevations and Materials)		
Created by:	Date:	Checked by:
MO	16/01/25	JM
Development Eng:	Document Type:	Scale:
DWG	As indicated	A0
National Grid Document Number:		20_LOR_0046

MARPT-BHK-01-ZZ-DG-A-202510