

## HEALTH & SAFETY

### CDM REGULATIONS 2015

SIGNIFICANT RISKS ASSOCIATED WITH THIS DRAWING ARE IDENTIFIED BELOW AND, WHERE APPLICABLE, AT SPECIFIC LOCATIONS ON THE DRAWING. REFER TO CDM REGULATION 9 RISK REGISTER FOR FULL DETAILS.

#### GENERAL NOTES

ALL BAKERICKS DRAWINGS ARE TO BE READ IN CONJUNCTION WITH THE GENERAL NOTES DRAWINGS, THE RELEVANT BAKERICKS SPECIFICATIONS AND ALL RELEVANT ARCHITECTS AND SERVICE ENGINEERS DRAWINGS AND SPECIFICATION.

ALL DIMENSIONS ARE IN MILLIMETRES (MM).

ALL LEVELS ARE IN METRES ABOVE ORDNANCE DATUM.

DO NOT SCALE ANY ENGINEERING DRAWINGS OR DIGITAL DATA. IF IN DOUBT ASK WORK TO FOURED DIMENSIONS ONLY. ANY DISCREPANCIES IN DIMENSIONS ARE TO BE REFERRED TO ENGINEER BEFORE WORK IS PUT TO HAND.

THE CONTRACTOR MUST ADVISE THE ARCHITECT AND ENGINEER OF ANY DISCREPANCIES BETWEEN THE CONTRACT DRAWINGS AND/OR SITE CONDITIONS / DIMENSIONS AT THE EARLIEST POSSIBLE OPPORTUNITY.

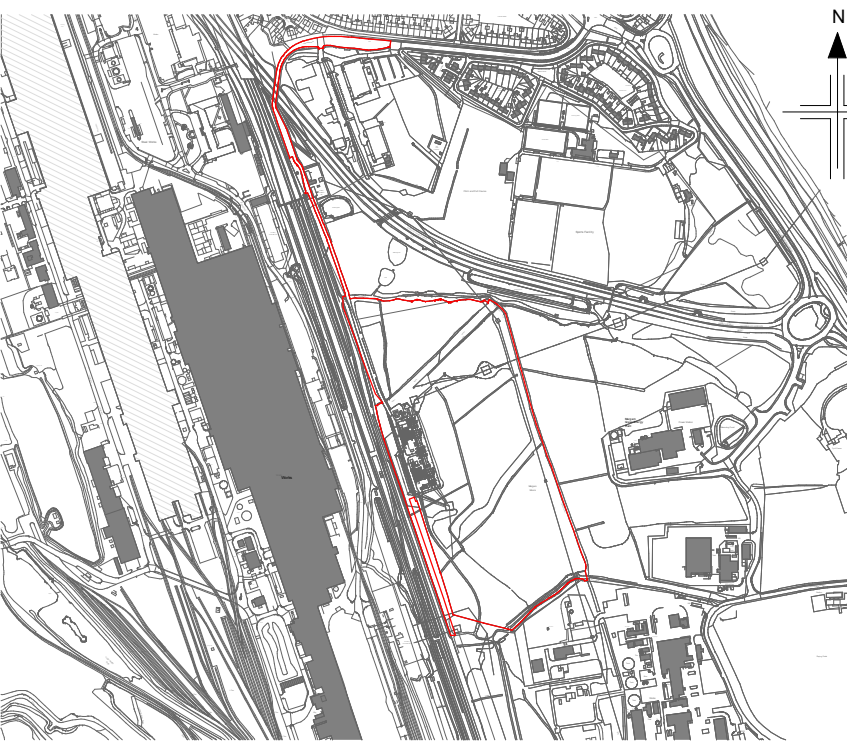
REVISION NOTES ARE FOR GUIDANCE ONLY. FOR SPECIFIC DETAILS, REFER TO CLOUDED AREA ON DRAWINGS FOR MOST RECENT AMENDMENTS.

ALL DIMENSIONS AND LEVELS ARE TO BE CHECKED ON SITE BY THE CONTRACTOR OR HIS SUB-CONTRACTOR PRIOR TO PREPARING ANY WORKING DRAWINGS OR COMMENCING ON SITE.

ALL WORK HAS TO BE CARRIED OUT WITH THE REQUIREMENTS OF THE RELEVANT STATUTORY AUTHORITIES AND REGULATIONS.

ALL METHOD STATEMENTS SHOULD BE SUBMITTED TO THE ARCHITECT / CDM PRINCIPAL DESIGNER AND ENGINEER FOR REVIEW AT LEAST TWO WEEKS BEFORE CARRYING OUT THE SAID WORKS.

ALL PROPRIETARY PRODUCTS TO BE AS SPECIFIED OR EQUAL APPROVED.



KEYPLAN

#### FIRE STRATEGY NOTES

**BOUNDARY CONDITION / UNPROTECTED AREAS**  
THE PROXIMITY OF THE BUILDING TO THE SITE OWNERSHIP BOUNDARY / CENTRE LINE OF THE ROADS HAS RESULTED IN NO BOUNDARY REQUIRED.

THIS HAS BEEN BASED UPON - **APPROVED DOCUMENT PART B (VOLUME 2) - TABLE 13.1 PERMITTED UNPROTECTED AREAS IN SMALL BUILDINGS OR COMPARTMENTS.**

**FIRE RATING TO WALLS**  
FROM **APPROVED DOCUMENT PART B (VOLUME 2) - TABLE B4**, THE REQUIRED FIRE RATING OF THE EXTERNAL WALLS, INTERNAL WALLS AND DOORS HAS BEEN ESTABLISHED AS **30 MINUTES**. FOR THE PURPOSES OF ESTABLISHING THE ABOVE FIRE RESISTANCE THE FOLLOWING HAVE BEEN ASSUMED:  
- BUILDING PURPOSE GROUP IS OFFICE.  
- BUILDING CONTROL INTERPRET THE CABLE AREA AS NOT BEING A BASEMENT.  
- THE HIGHEST FLOOR LEVEL IS LESS THAN 5M ABOVE GROUND LEVEL.

#### ELEMENTS OF STRUCTURE

STRUCTURAL ELEMENTS TO BE FIRE PROTECTED AS REQUIRED. REFER TO THE STRUCTURAL ENGINEERS DETAILS.

**TRAVEL DISTANCES**  
FROM **APPROVED DOCUMENT PART B (VOLUME 2) - TABLE 2.1 - LIMITATIONS ON TRAVEL DISTANCE**

FOR THE PURPOSES OF ESTABLISHING THE TRAVEL DISTANCES THE FOLLOWING HAVE BEEN ASSUMED.

BUILDING PURPOSE GROUP IS OFFICE  
BUILDING ASSUMED TO BE NORMAL HAZARD  
INTERNAL LAYOUTS OF ROOMS KNOWN  
THEREFORE MAXIMUM TRAVEL DISTANCES ARE:  
TRAVEL IN TWO DIRECTIONS 45M  
TRAVEL IN ONE DIRECTION 18M

#### SERVICES OPENINGS

ALL SERVICES PASSING THROUGH FIRE RATED CONSTRUCTIONS TO BE FIRE STOPPED WITH TESTED AND CERTIFIED METHODS AND PRODUCTS. THE DESIGN AND INSTALLATION OF FIRE STOPPING TO BE CARRIED OUT BY A SPECIALIST

#### FIRE STRATEGY KEY

- 30 MINUTE FIRE RESISTANT CONSTRUCTION
- FINAL EXIT
- PRIMARY ESCAPE ROUTE / FIRE TRAVEL DISTANCES - FTD (m)
- VCB Vertical Cavity Barrier
- FD30s 30 MINUTE FIRE RESISTANT DOOR
- START OF ESCAPE DISTANCE
- END OF ESCAPE DISTANCE
- FIRE EXIT SIGN WALL MOUNTED - FINAL EXIT

ADDITIONAL FIRE / STATUTORY SIGNAGE MAY BE REQUIRED BY BUILDING CONTROL / FIRE OFFICER.

REFER TO ELECTRICAL DRAWINGS FOR ILLUMINATED FINAL EXIT SIGNS.

ILLUMINATED SIGNAGE AND CALL POINTS SUBJECT TO FINAL COORDINATION WITH ELECTRICAL ENGINEERS.

P04	S3 For Review and Comment: Planning drawings updated following feedback with NPT	AL	OTI / PC	05/08/25
P03	Issued for planning: comments incorporated following client feedback	GP	OTI / RC	24/04/25
P02	Updated drawing to reflect material changes as agreed with LOR	MY	OTI / RW	24/02/25
P01	Issued For Comment	MY	OTI / JK	17/02/25
Rev	Description	Card	Check/ App'd	Date

**nationalgrid**

Master Scheme No: 101677 Sub-Scheme No: Site: MARGAM

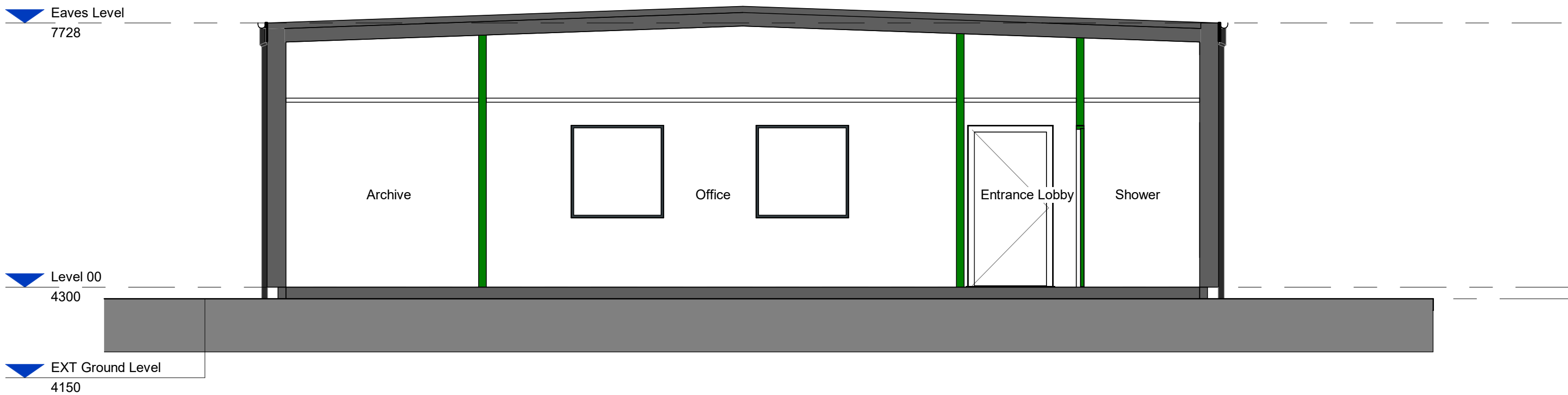
Scheme Name: Margam Substation

Document Title: Margam Amenities Building - (Fire Strategy Plan Level 00)

Created by: MY	Date: 12/02/25	Checked by: OTI	Date: 12/02/25	Approved by: JK	Date: 12/02/25
Development Eng: DWG	Document Type: DWG	Scale: As indicated	Format: A0	Sheets: 1 OF 1	Rev: P04

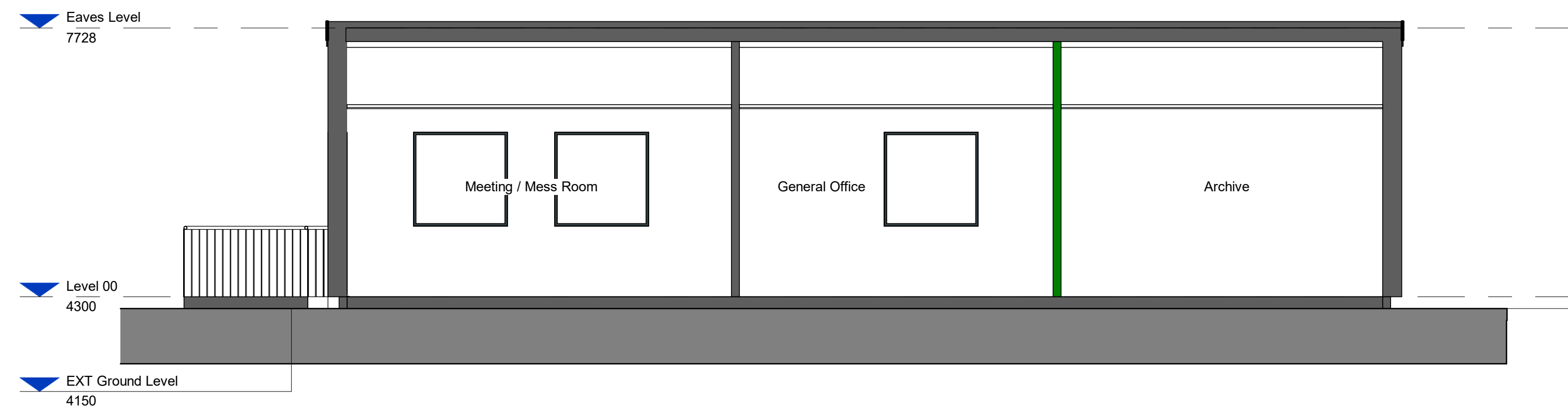
National Grid Document Number: 20\_LOR\_0059

MARPT-BHK-01-00-DG-A-200701



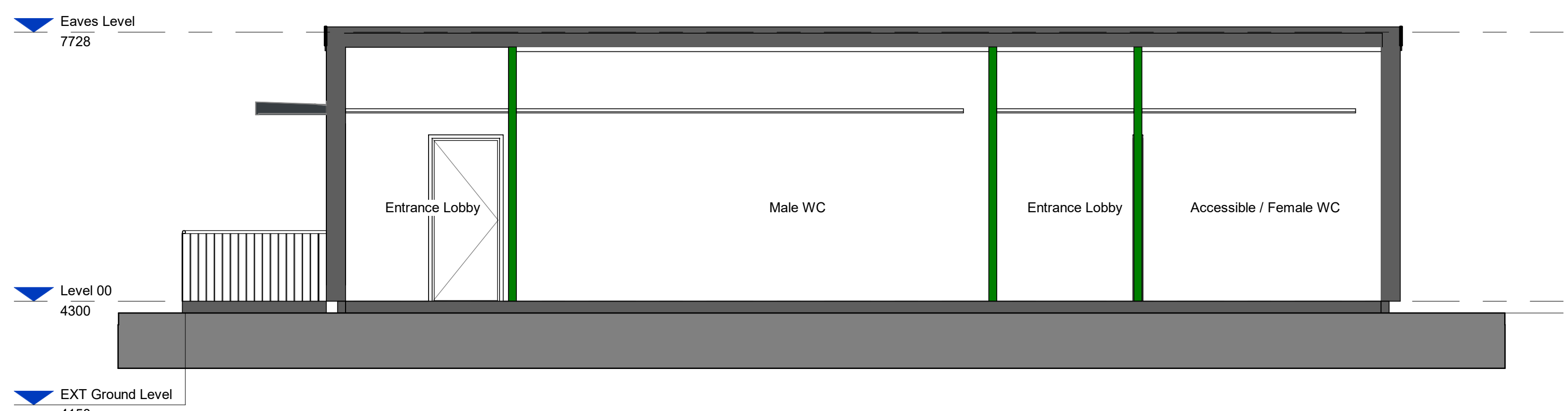
2 Fire Strategy Section 01

Scale: 1 : 50



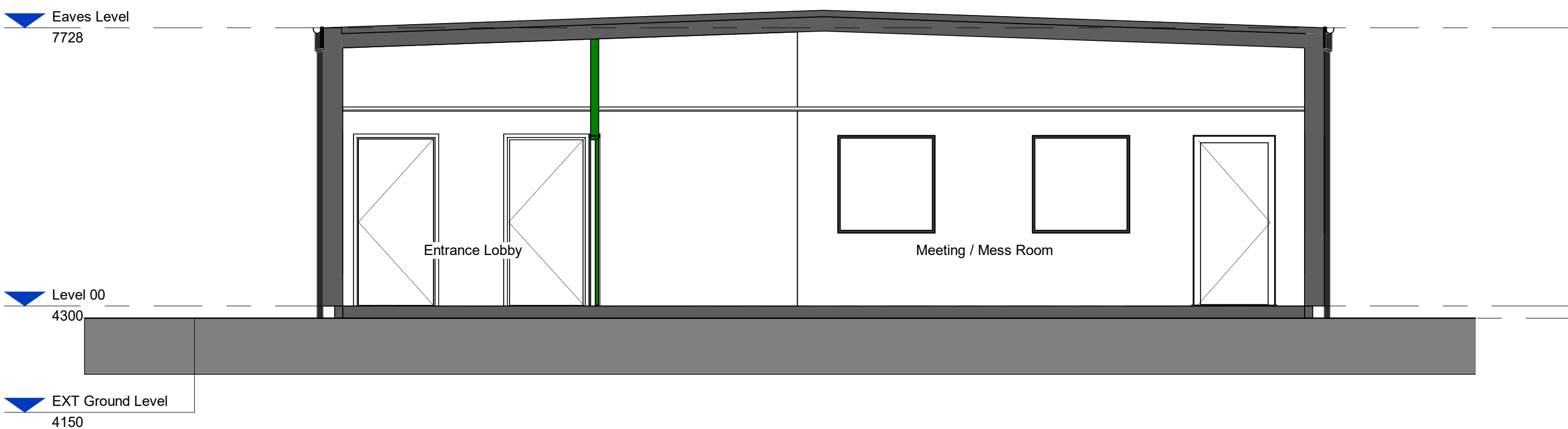
3 Fire Strategy Section 02

Scale: 1 : 50



4 Fire Strategy Section 03

Scale: 1 : 50



5 Fire Strategy Section 04

Scale: 1 : 50

1 Fire Strategy Plan

Scale: 1 : 50

