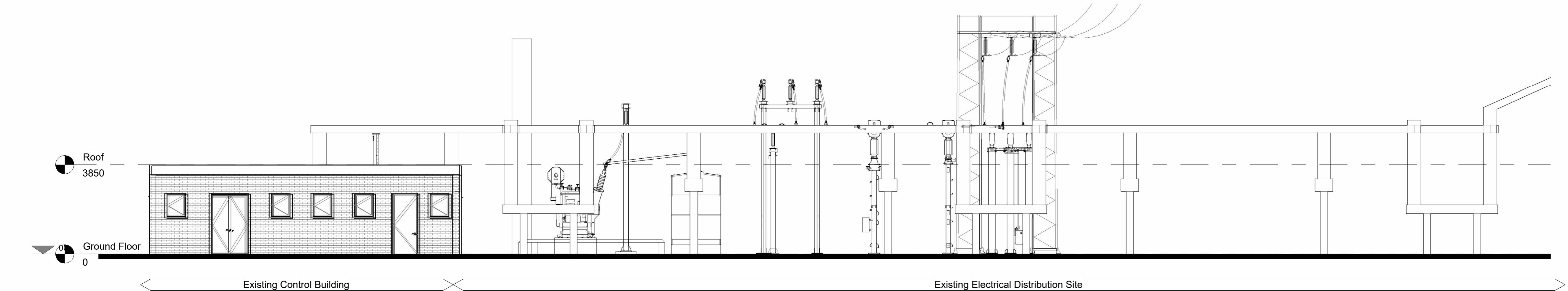
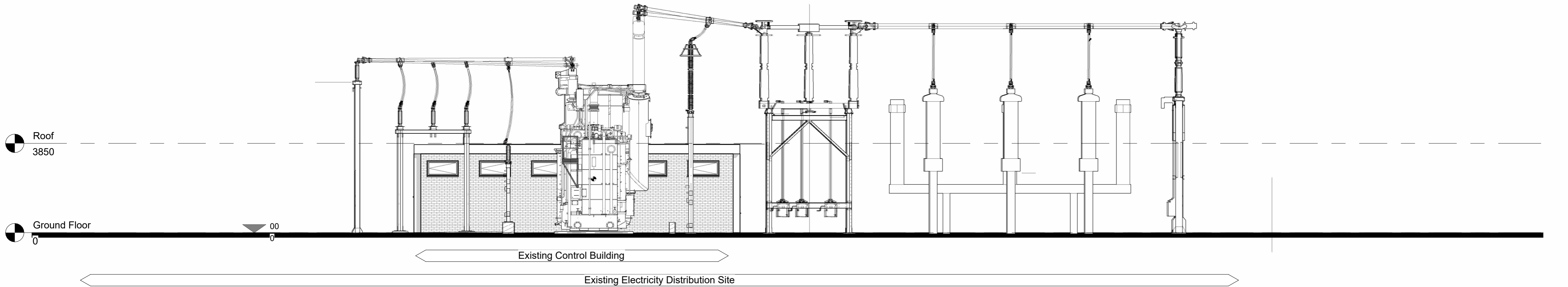


1 Front Elevation with context - AA
Scale: 1 : 100



2 Gable Elevation with context - BB
Scale: 1 : 100



3 Rear Elevation with context - CC
Scale: 1 : 100

GENERAL NOTES

ALL BAKERHICKS DRAWINGS ARE TO BE READ IN CONJUNCTION WITH THE GENERAL NOTES DRAWINGS, THE RELEVANT BAKERHICKS SPECIFICATIONS AND ALL RELEVANT ARCHITECTS AND SERVICE ENGINEERS DRAWINGS AND SPECIFICATION.

ALL LEVELS ARE IN METRES ABOVE ORDINANCE DATUM.

ALL DIMENSIONS ARE IN MILLIMETRES (U.N.O.)

DO NOT SCALE ANY ENGINEERING DRAWINGS OR DIGITAL DATA. IF IN DOUBT ASK. WORK TO FIGURED DIMENSIONS ONLY. ANY DISCREPANCIES IN DIMENSIONS ARE TO BE REFERRED TO ENGINEER BEFORE WORK IS PUT TO HAND.

THE CONTRACTOR MUST ADVISE THE ARCHITECT AND ENGINEER OF ANY DISCREPANCIES BETWEEN THE CONTRACT DRAWINGS AND/OR SITE CONDITIONS / DIMENSIONS AT THE EARLIEST POSSIBLE OPPORTUNITY.

REVISION NOTES ARE FOR GUIDANCE ONLY. FOR SPECIFIC DETAILS, REFER TO CLOUDED AREA ON DRAWINGS FOR MOST RECENT AMENDMENTS.

ALL DIMENSIONS AND LEVELS ARE TO BE CHECKED ON SITE BY THE CONTRACTOR OR HIS SUBCONTRACTOR PRIOR TO PREPARING ANY WORKING DRAWINGS OR COMMENCING ON SITE.

ALL WORK HAS TO BE CARRIED OUT WITH THE REQUIREMENTS OF THE RELEVANT STATUTORY AUTHORITIES AND REGULATIONS.

ALL METHOD STATEMENTS SHOULD BE SUBMITTED TO THE ARCHITECT / CDM PRINCIPAL DESIGNER AND ENGINEER FOR REVIEW AT LEAST TWO WEEKS BEFORE CARRYING OUT THE SAID WORKS.

ALL PROPRIETARY PRODUCTS TO BE AS SPECIFIED OR EQUAL APPROVED.



KEYPLAN

**FOR
PLANNING**

P01	First Issue	LA	OT / RW	10/01/25
Rev	Description	Cre'd	Chk'd / App'd	Date
<div><div></div><div>nationalgrid</div></div>				
Master Scheme No:		Sub-Scheme No:	Site:	
			MARGAM	
Scheme Name:				
Margam Substaion				
Document Title:				
General Arrangement Elevations Existing				
Created by:	Date:	Checked by:	Date:	Approved by:
LA	10/02/25	OT	10/02/25	RW
Development Eng:	Document Type:	Scale:	Format:	Sheet(s):
DWG		1 : 100	A1	
National Grid Document Number:				
FEED Document Number:				
MARPT-BHK-01-ZZ-DG-A-202110				