

## The Great Grid Upgrade

North Humber to High Marnham

# Community update

September 2025



**Thank you to everyone who took the time to participate in our consultation on North Humber to High Marnham, a proposed new high voltage overhead electricity transmission line.**

Between 18 February and 15 April 2025, we asked for your feedback on our proposals as part of our statutory consultation. We were pleased to receive 472 responses and would like to thank everyone who attended our in-person events and online webinars. We are currently reviewing all feedback as we seek to further refine our plans.

In this newsletter, you can read about some of the emerging key themes from consultation feedback and find out more about how we are considering your comments. You can also learn about upcoming survey works and the project's next steps.

## About the project

North Humber to High Marnham is a proposed new 400 kilovolt (kV) overhead electricity transmission line. It would run for approximately 90 km between two proposed new substations: one at Creyke Beck in East Riding of Yorkshire and one at High Marnham in Nottinghamshire.

The project is part of The Great Grid Upgrade, the largest overhaul of the electricity grid in generations. Alongside other National Grid projects in England and Wales, the project will enable us to carry more clean, secure energy from where it's generated, to where it's needed, boosting energy security and helping the nation become more self-sufficient.

To find out more about The Great Grid Upgrade, visit [nationalgrid.com/tggu](https://nationalgrid.com/tggu).

**11,680**

newsletters sent  
to addresses within  
1 km of our  
proposals

**582**

people attended our  
9 consultation events

**47**

people attended our  
10 online webinars

**472**

feedback responses  
received

**8,565**

visits to our  
project website

**+1 million**

views of our social  
media advertising

The consultation has now closed, but copies of all the documents published as part of previous consultations remain in the Document library on our website. If you have any questions about the proposals, you can contact the project team using the details in this newsletter.

## What you told us

We are still in the process of reviewing consultation feedback, however some of the emerging key themes include:



**Overhead lines:** Suggestions of alternative routes that the new overhead line could take, along with questions about whether existing overhead lines can be upgraded or if the new line could be routed underground instead



**Construction:** Comments about the proposed location of temporary construction compounds and access routes, along with concerns about potential impact on communities during the construction phase



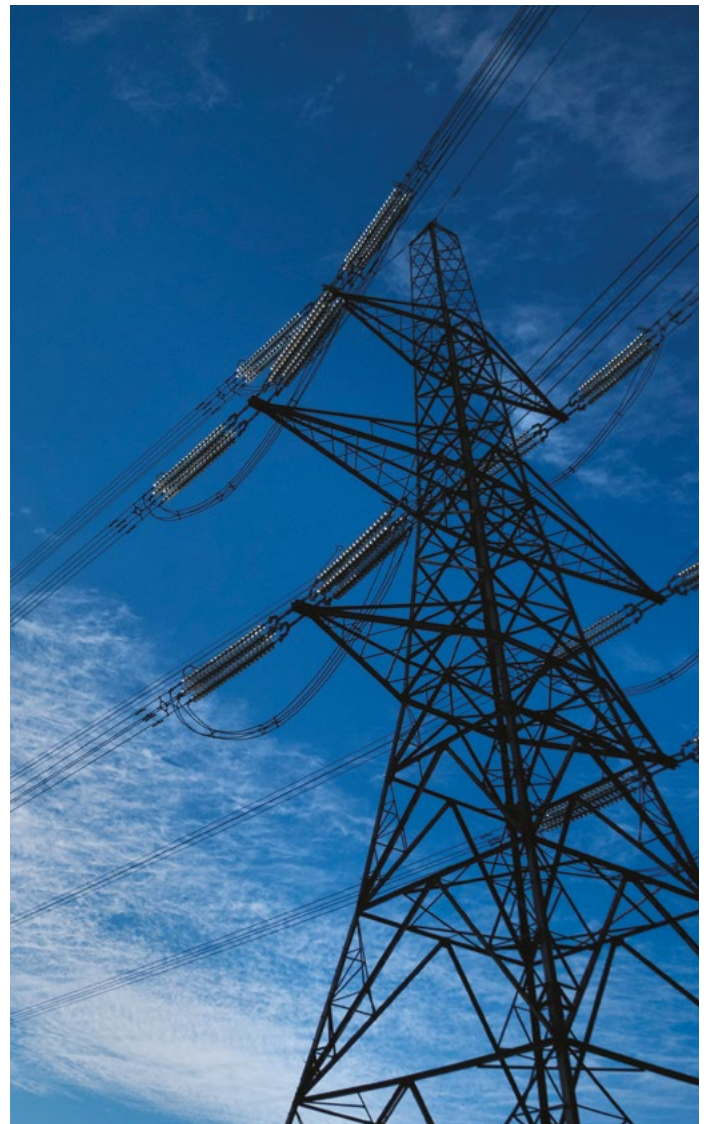
**Ecology:** Concerns about the potential loss of habitats and associated impact on wildlife, including birds and protected species



**Landscape and visual:** Concerns about the visual impact of the proposed new overhead line, particularly in areas where it is routed further away from existing overhead lines



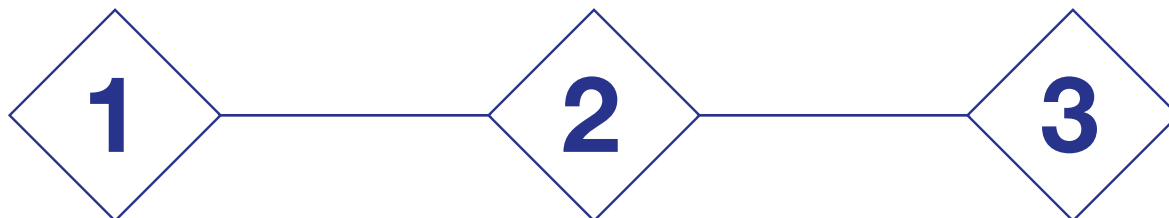
**Community benefit:** Suggestions of areas where funding could be provided to deliver community benefit, including parks, play areas and public rights of way.





# How we review your feedback

Our team is carefully considering all suggestions for changes to the design of the project as we review consultation feedback. Some of the key factors we consider when doing this include:



## **The feasibility of the suggested change –**

are there engineering, environmental or socio-economic constraints (such as geography, ground conditions, existing development and ecological designations) that impact the viability of the suggested change?

## **Planning policy and other guidance –**

does the suggested change comply with planning policy and other guidance? Examples of policy and guidance that we consider when developing proposals include the Government's National Policy Statements and the Holford Rules, which are guidelines on how to route new overhead lines.

## **National Grid's statutory duties –**

is the suggested change compliant with our legal duties to develop proposals in a manner that is economic and efficient? As new electricity infrastructure is paid for through all of our electricity bills, we need to minimise the cost to consumers.

Once all relevant factors have been considered, we will decide whether to incorporate the suggested change into our proposals. Where consultation feedback includes a request to make a change to our proposals that has already been considered at an earlier stage of consultation, we will review our previous work to confirm that the conclusions we reached remain accurate.

More information on how your feedback has informed the development of our proposals will be included in the Consultation report, which will form part of our application for development consent. As part of this report, we will summarise the requests we received to change our proposals, including whether the changes were implemented. If we could not make certain changes, we will explain why.

## Project benefits



**North Humber to High Marnham will prepare the grid for the increasing level of electricity demand across the East Midlands.**



**Boosting energy security by helping reduce our dependence on imported gas**



**Helping to lower energy bills by connecting the Grid to more affordable forms of electricity**

# Delivering benefits locally

**We believe communities should be rewarded for hosting new transmission infrastructure essential to boosting home grown, cleaner and more affordable power for the country.**

**Earlier this year, the Government published a clear framework to enable us to work with communities and deliver meaningful, long-term, social and economic benefits through strategic investment.**

We are committed to working with our regulator (Ofgem), industry partners, local communities and their representatives to ensure these benefits are delivered fairly and effectively, driving lasting, positive change for the people and places integral to our developing electricity network. The funding suggested by the new framework (which would only become available once construction has started) includes:



**£200,000** per km of new overhead line

Separate to this guidance, the Government has also announced plans for an electricity bill discount scheme for nearby households, which could include bill discounts of up to £2,500 over 10 years for those living within 500 metres of our proposals. We will continue to work with Government as further details of this scheme emerge.

We will share more information, including how groups can apply for funding, after we have submitted our application for development consent.



**£530,000** per new substation





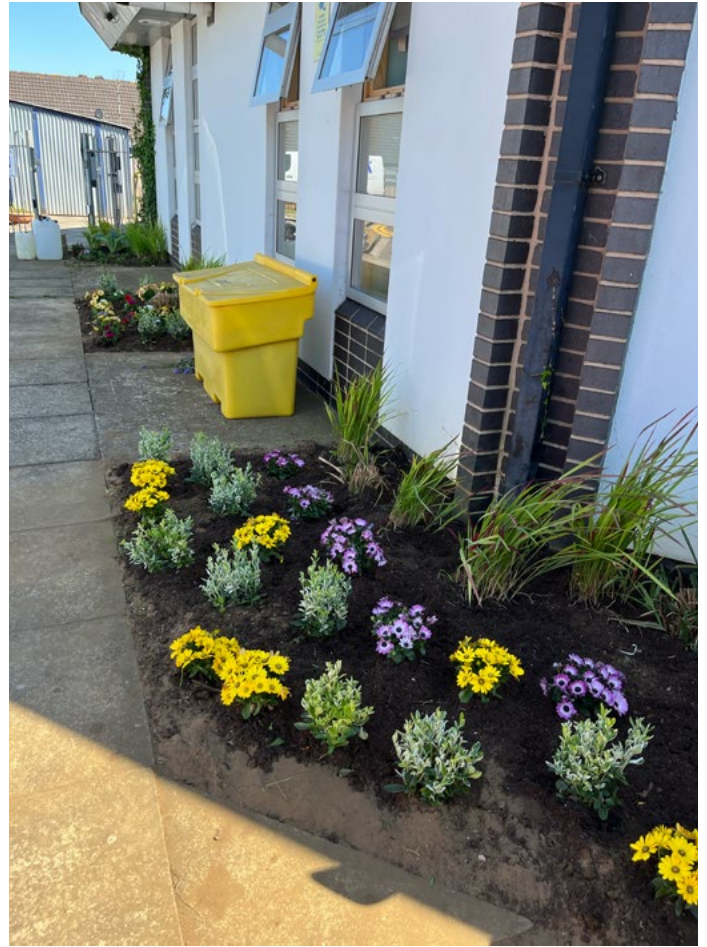
## Volunteering in the community

For its most recent day of volunteer work, the North Humber to High Marnham team spent some time with North Lincolnshire Council at Ashby Community Hub.

Located in Scunthorpe, the Hub provides residents with easy access to information, advice and support. It offers local people the opportunity to develop employability skills, reduces social isolation and provides a range of activities for both children and adults which support and improve their health and wellbeing.

The team was pleased to be able to contribute to such a valuable local resource by helping in the Hub's community garden with a number of gardening and painting tasks, including planting and building raised beds.

For more information about the Hub, search online for 'Ashby Community Hub'. If your organisation or one you know of could benefit from volunteer support, please get in touch via email at [contact@nh-hm.nationalgrid.com](mailto:contact@nh-hm.nationalgrid.com).



# Surveys update

Over the past few years, you may have seen members of our team out on-site along the route of the project as they carry out a range of environmental surveys. These surveys are an important part of the process. As we develop our plans, surveys will continue between now and the submission of our application for development consent.

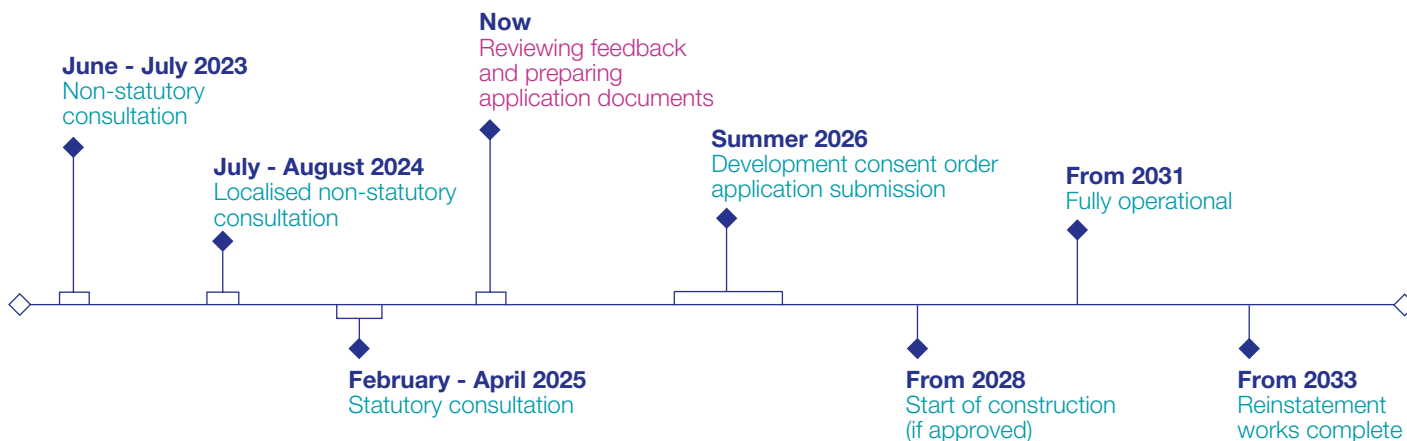
In autumn 2025, we will be carrying out archaeological surveys. These surveys will include excavating trenches for investigation and will be carried out by specialist contractors. By investigating the route at this early stage, we will ensure that any archaeological remains are found and recorded.

Any archaeological remains found will tell us about the people who lived in the parts of East Yorkshire, North Lincolnshire and Nottinghamshire crossed by the scheme from the Stone Ages, Bronze and Iron Ages, Romans, Anglo-Saxons, medieval and post-medieval periods, when many of today's farms were established.

While some surveys will take place on public rights of way, there will be instances where we need to access private land in order to carry out our work. We will always seek to agree this with the landowner/occupier before the work takes place, and the members of our team carrying out survey works will always carry identification.

If you are a landowner or occupier and have questions about surveys, you can speak to our Lands team at Dalcour Maclaren. They can be contacted by email at [NH-HM@dalcourmaclaren.com](mailto:NH-HM@dalcourmaclaren.com), by phone on **0333 188 3511**, or by writing to **Unit 1, Staplehurst Farm, Weston on the Green, OX25 3QU**.

## Indicative project timeline



## Contact us



Email us – Send an email to [contact@nh-hm.nationalgrid.com](mailto:contact@nh-hm.nationalgrid.com)



Call us – You can contact the team on **0808 189 1346** (Mon – Fri, 9am-5:30pm)



Send us a letter – Write to us at **Freepost NH TO HM**



**nationalgrid**