

Croeso i'n digwyddiad

Hoffem gael eich barn ar ein cynigion cychwynnol ar gyfer is-orsaf newydd ger Llandyfaelog, i'r de o Gaerfyrddin.

Rydyn ni'n credu ei bod hi'n bwysig iawn gweithio gyda phobl sy'n byw ac yn gweithio'n lleol wrth i ni ddatblygu ein cynlluniau ac rydyn ni eisiau clywed gennych chi. Gallwch ddysgu mwy am ein prosiect, siarad ag aelodau o'r tîm, gofyn unrhyw gwestiynau a rhoi adborth yma heddiw.

Mae'r is-orsaf arfaethedig ger Llandyfaelog yn ymateb i geisiadau cysylltu y mae National Grid Energy Transmission (NGET) wedi'u derbyn ar gyfer De Cymru gan Green GEN Cymru a National Grid Energy Distribution (NGED).

Mae National Grid yn cyflenwi trydan yn ddiogel, yn ddibynadwy ac yn effeithlon i'r cwsmeriaid rydyn ni'n eu gwasanaethu – ar yr un pryd a gweithio tuag at adeiladu system ynni sy'n lanach ac yn decach ar gyfer y dyfodol. Dydyn ni ddim yn cynhyrchu ynni ein hunain.

Rydyn ni'n berchen ar y rhwydwaith trawsyrru trydan foltedd uchel yng Nghymru a Lloegr ac yn ei gynnal a'i gadw, gan gludo llawer iawn o drydan foltedd uchel o'r man lle mae'n cael ei gynhyrchu i'r man lle mae ei angen. Mae gweithredwyr rhwydweithiau lleol wedyn yn ei ddanfôn ar foltedd is i gartrefi a busnesau unigol.

Diolch am ddod i'n digwyddiad heddiw.

Welcome to our event

We would like your views on our initial proposals for a new substation near Llandyfaelog, south of Carmarthen.

We think it's really important to work with people living and working locally as we develop our plans and we want to hear from you. You can learn more about our project, talk to members of the team, ask any questions and give feedback here today.

The proposed substation near Llandyfaelog is in response to connection requests National Grid Energy Transmission (NGET) has received for South Wales from Green Gen Cymru and National Grid Electricity Distribution (NGED).

National Grid delivers electricity safely, reliably, and efficiently to the customers we serve – all while working towards building a cleaner, fairer energy system for the future. We don't generate energy ourselves.

We own and maintain the high-voltage electricity transmission network in Wales and England, transporting large amount of electricity at high voltage from where it is generated to where it is needed. Local network operators then deliver it at lower voltages to individual homes and businesses.

Thank you for coming to today's event.



What is a substation and why it's needed

Substations are critical parts of the transmission and distribution networks and enable electricity to be transmitted at different voltages, securely and reliably.

One of the main roles of substations is to convert electricity into different voltages. This is needed so the electricity can be transmitted throughout the country and then distributed throughout local neighbourhoods and into our homes, businesses and public services.

NGET have a legal obligation to connect customers to our network when a connection is requested. When existing substations do not have the capacity for the size of the connection required, we are required to build a new one.

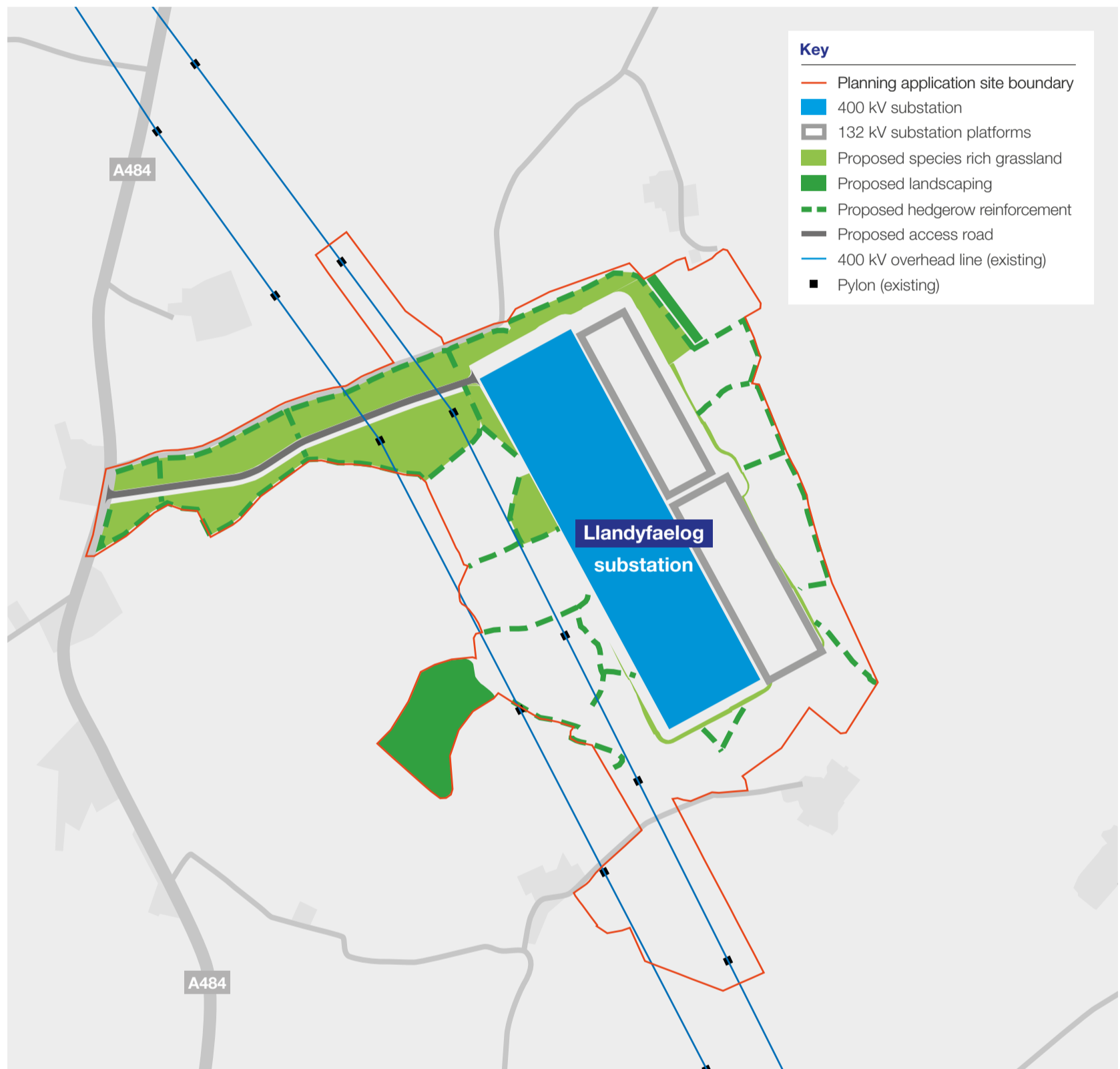
The proposed substation near Llandyfaelog is in response to connection requests NGET has received in South Wales from Green Gen Cymru and National Grid Energy Distribution (NGED).



Our proposals

The proposed site will comprise a single platform with the three substation compounds within its footprint: one 400 kilovolt (kV) substation built and operated by NGET, and two smaller 132 kV substations built and operated by Green Gen Cymru and NGED respectively.

NGED and Green Gen Cymru will still be required to apply for separate planning permissions to be able to construct their proposed substation compounds on the site, as well as the connections into the proposed 400 kV substation.



Reducing the impact of our project

As we have been developing the project we have undertaken a range of ground investigation, surveys and assessments to inform our understanding of the project area and its characteristics. This will ensure that we reduce the impact of our project on the local community and environment.

Landscape and visual impact

We have completed a landscape and visual assessment of the project which will inform a landscape strategy. The strategy will confirm how we intend to minimise the landscape and visual impacts of the project, where possible. This will be included as part of our planning application to Carmarthenshire County Council.

As part of this consultation, we are seeking feedback on our proposed natural screening, which includes areas of new scrub, hedgerows and reinforcing existing hedgerows.

Impact on the environment

We are committed to ensuring a 10% net benefit for biodiversity. This will be achieved by a range of measures, such as habitat creation and enhancement for protected species.

Our landscaping plans are proposed to help us achieve this.

We are currently exploring other ways to hit our target and welcome your feedback.





Supporting local communities

We believe local communities hosting new transmission infrastructure should receive benefits for doing so. Here are some thoughts about what could potentially be supported through community benefit funds – but we want to hear your views.

We will engage with local communities and stakeholders to ensure we identify community benefits that work for you:



Delivering environmental enhancements



Supporting employment, education, and skills development



Promoting health and wellbeing in the community



Investing in community infrastructure and facilities



Alleviating fuel poverty and enhancing energy efficiency



Supporting communities to decarbonise

Have your say

Our consultation on our initial proposals for a new substation near Llandyfaelog is open until 11.59pm on Tuesday 15 July 2025.

We would like your feedback on:

- Our proposed construction site access and traffic considerations
- How we could reduce the landscape and visual impact of the site, for example by screening with trees and hedgerows
- How we might boost biodiversity in the area, including creating new habitats
- Drainage and flooding considerations
- Any other comments on our proposals

You can give your feedback in several ways:

- Find out more and complete an online feedback form on our website. Access the website by scanning the QR code below or go to **Nationalgrid.com/Llandyfaelog**



- Complete a feedback form at this event
- Email your comments to **Llandyfaelog@nationalgrid.com**

- Write to us at **FREEPOST NG Llandyfaelog** (no stamp or further address needed).
- Telephone us on **0800 915 3595** (Monday–Friday, 9am–5.30pm).

The community consultation on our initial proposals for a new substation near Llandyfaelog is open until **Tuesday 15 July 2025 (11.59pm)**

What happens next?

Your feedback will help us shape our plans as we continue to develop our proposals.

We will continue our discussions with landowners and undertake surveys, technical and environmental work in and around the proposed substation site to give us more information about the area and to help inform our plans.

You may see us, and our contractors, working in and around the proposed development site.

We will hold a pre-application consultation on our proposals which will help refine our final proposals before we submit a planning application to Carmarthenshire County Council in early 2026.

