

Overview

We have received a request to provide a new connection for a data centre in the Park Royal area near to the Grand Union Canal. Under our license to operate, we have a legal obligation to connect companies to our network when a connection is requested.

We will be providing this new connection between National Grid's substations at Willesden and Kensal Green. This requires laying 3km of new cable along the Grand Union Canal towpath using the existing high voltage cable troughs. A map outlining the route of the works can be found on the reverse of the flyer.

Our first phase of works are due to begin in March 2024. A second phase of works is then set to begin later that year, with the project reaching completion in 2025. All dates are subject to change.

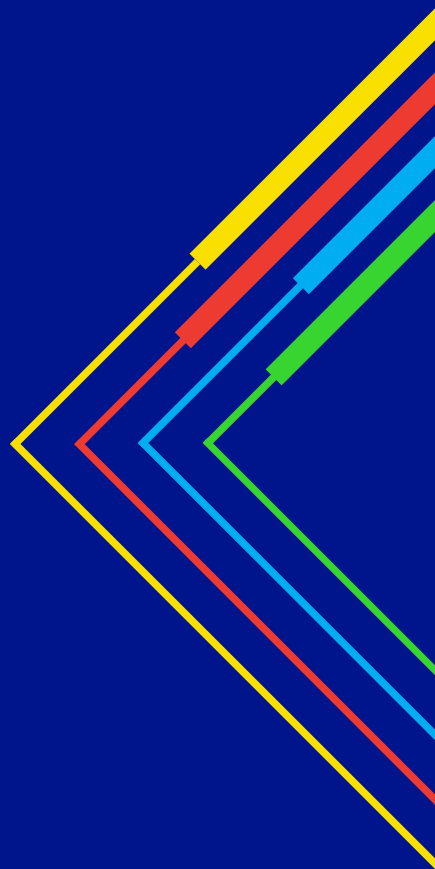
Community Grants

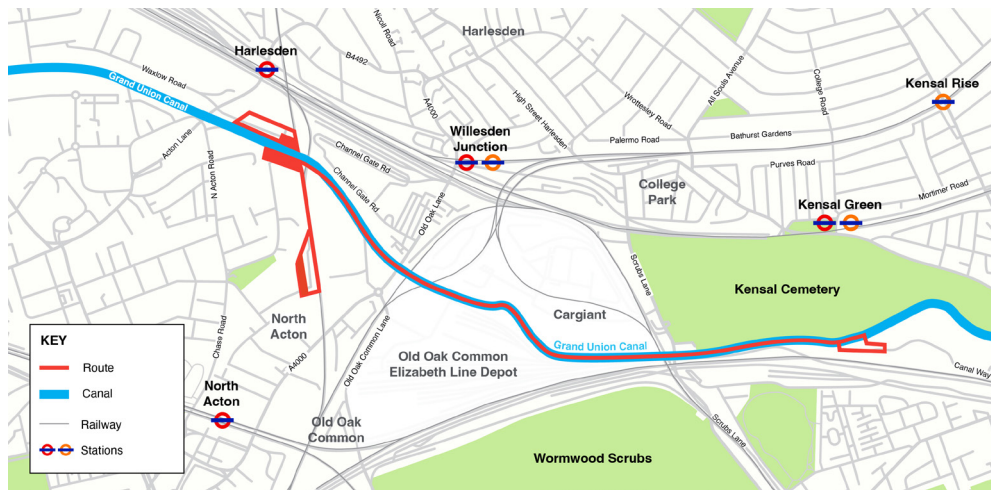
National Grid are encouraging applications for funding from our Community Grant Programme, which is aimed at community groups in areas where our work is impacting local people through our operations and construction activities.

You can apply here:

www.nationalgrid.com/responsibility/community/community-grant-programme

nationalgrid





Contact details

You can reach out to our dedicated community relations team, between 9am-5pm Monday-Friday.

☎ 0800 093 1678

✉ contact@willesden.nationalgrid.com

nationalgrid