

Service Layer Credits: World Ocean
Base: OceanWise, Esri, GEBCO,
Garmin, NaturalVue

Legend

- English Offshore Scheme draft Order Limits
- EGL 4 Scottish Waters
- EGL 3 Scottish Waters
- Study Area
- 12 NM Limit
- Scottish Adjacent Waters

Notes

This drawing is scaled at paper size A3, therefore any prints taken at smaller sizes will affect accuracy of the measurement units and should not be scaled against.

Coordinate System: ETRS 1989 UTM Zone 30
Sheet X Centroid Coordinate: 684794.37E Sheet Y Centroid Coordinate: 6083456.96N

0 10 20 40 Kilometers

BACKGROUND MAPPING INFORMATION HAS BEEN REPRODUCED FROM THE ORDINANCE SURVEY BY PERMISSION OF ORDINANCE SURVEY OF THE CONTROLLER OF HER MAJESTY'S STATIONERY OFFICE. © CROWN COPYRIGHT AND DATABASE RIGHTS 2024 ORDINANCE SURVEY 0100031673.

01	17/04/2025	-	TB	KH	LD
Issue	Date	Remarks	Drawn	Checked	Approved

Title

Marine Archaeology Study Area

nationalgrid

Figure Number

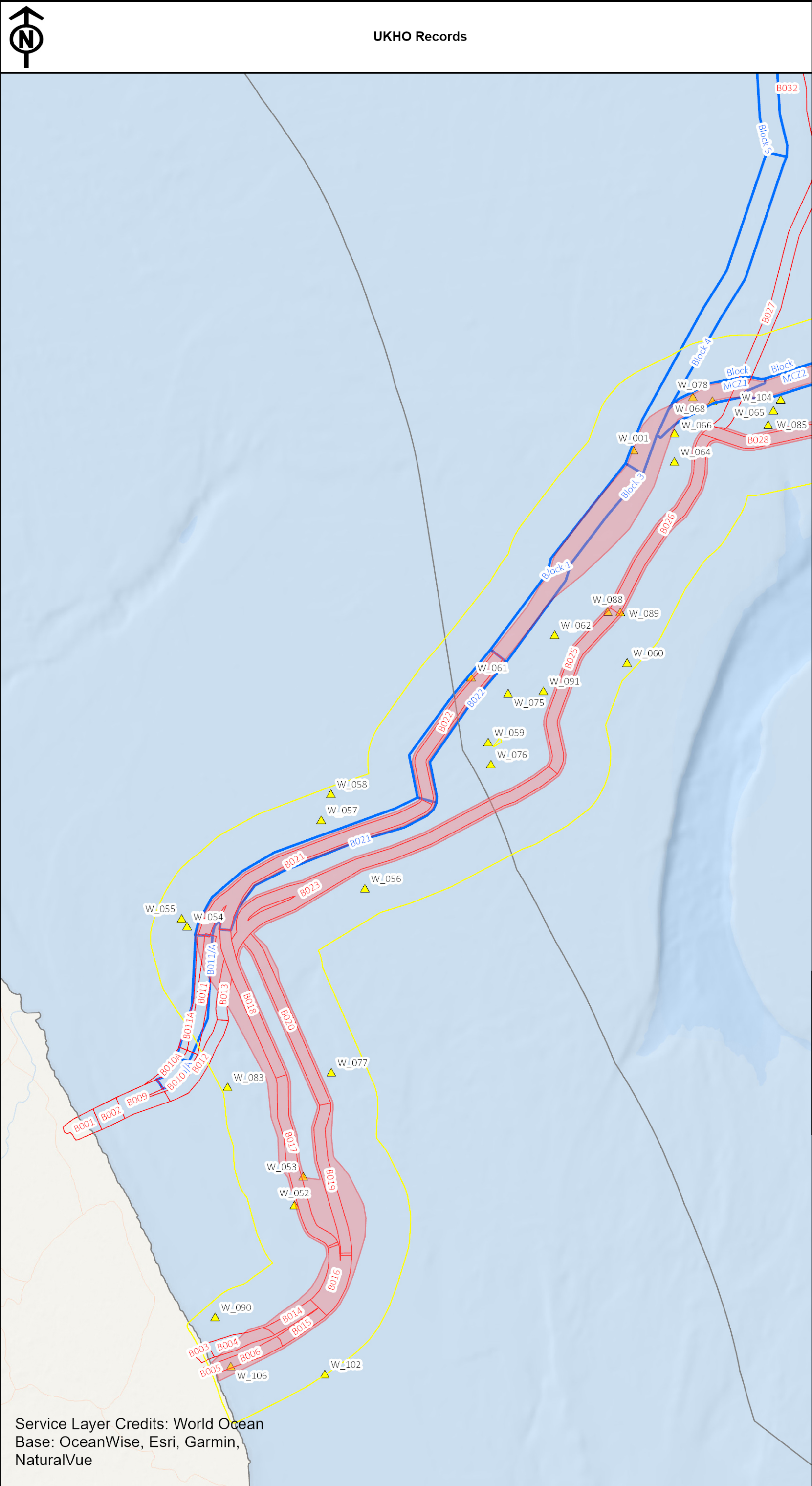
Figure 26-1

Drawing Reference

EGL-EXT-XX-XX-DL-X-001

Scale	Sheet Size	Sheet	Issue
1:984,041	A3	SHEET 1 OF 1	01

COPYRIGHT: NOT TO BE REPRODUCED WITHOUT THE WRITTEN PERMISSION OF NATIONAL GRID ELECTRICITY TRANSMISSION PIC



Legend

- English Offshore Scheme draft Order Limits
- Study Area
- 12 NM Limit
- Scottish Adjacent Waters
- EGL 3 Block
- EGL 4 Block
- UKHO record

Notes

This drawing is scaled at paper size A3, therefore any prints taken at smaller sizes will affect accuracy of the measurement units and should not be scaled against.

United Kingdom

Coordinate System: ETRS 1989 UTM Zone 30
Sheet X Centroid Coordinate: 729912.85E Sheet Y Centroid Coordinate: 5933824.76N

0 1.75 3.5 7 Kilometers

BACKGROUND MAPPING INFORMATION HAS BEEN REPRODUCED FROM THE ORDINANCE SURVEY BY PERMISSION OF ORDINANCE SURVEY OF THE CONTROLLER OF HER MAJESTY'S STATIONERY OFFICE. © CROWN COPYRIGHT AND DATABASE RIGHTS 2024 ORDINANCE SURVEY 0100031673.

Issue	Date	Remarks	Drawn	Checked	Approved
01	17/04/2025	-	TB	KH	LD

Title

UKHO Records

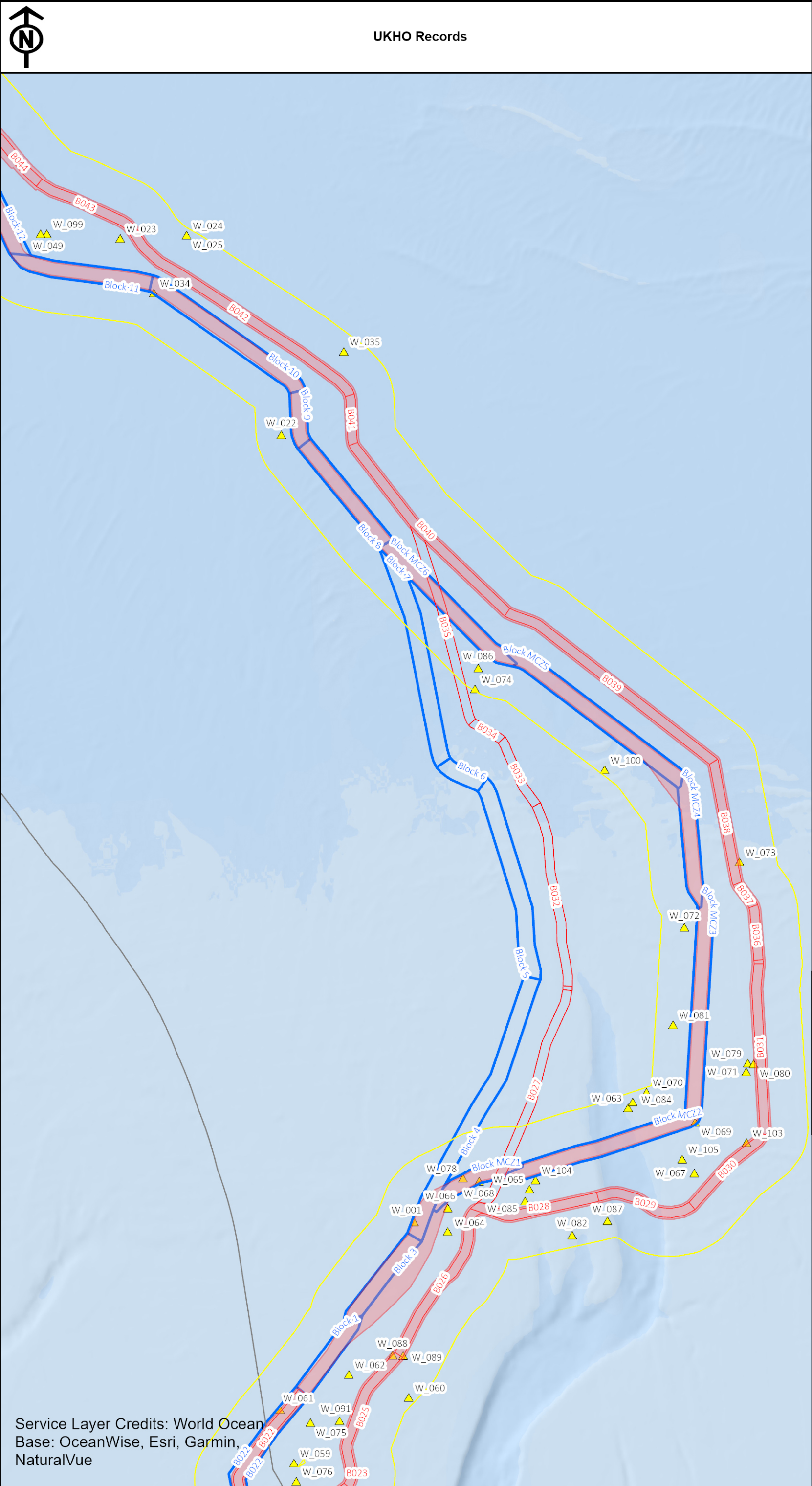
nationalgrid

Figure Number: Figure 26-2

Drawing Reference: EGL-EXT-XX-XX-DL-X-002

Scale	Sheet Size	Sheet	Issue
1:165,095	A3	SHEET 1 OF 5	01

Service Layer Credits: World Ocean
Base: OceanWise, Esri, Garmin,
NaturalVue



Legend

- English Offshore Scheme draft Order Limits
- Study Area
- 12 NM Limit
- Scottish Adjacent Waters
- EGL 3 Block
- EGL 4 Block
- UKHO record

Notes

This drawing is scaled at paper size A3, therefore any prints taken at smaller sizes will affect accuracy of the measurement units and should not be scaled against.

Coordinate System: ETRS 1989 UTM Zone 30
Sheet X Centroid Coordinate: 739546.75E Sheet Y Centroid Coordinate: 5972446.64N

0 2 4 8 Kilometers

BACKGROUND MAPPING INFORMATION HAS BEEN REPRODUCED FROM THE ORDINANCE SURVEY BY PERMISSION OF ORDINANCE SURVEY OF THE CONTROLLER OF HER MAJESTY'S STATIONERY OFFICE. © CROWN COPYRIGHT AND DATABASE RIGHTS 2024 ORDINANCE SURVEY 0100031673.

01	17/04/2025	-	TB	KH	LD
Issue	Date	Remarks	Drawn	Checked	Approved

Title

UKHO Records

nationalgrid

Figure Number

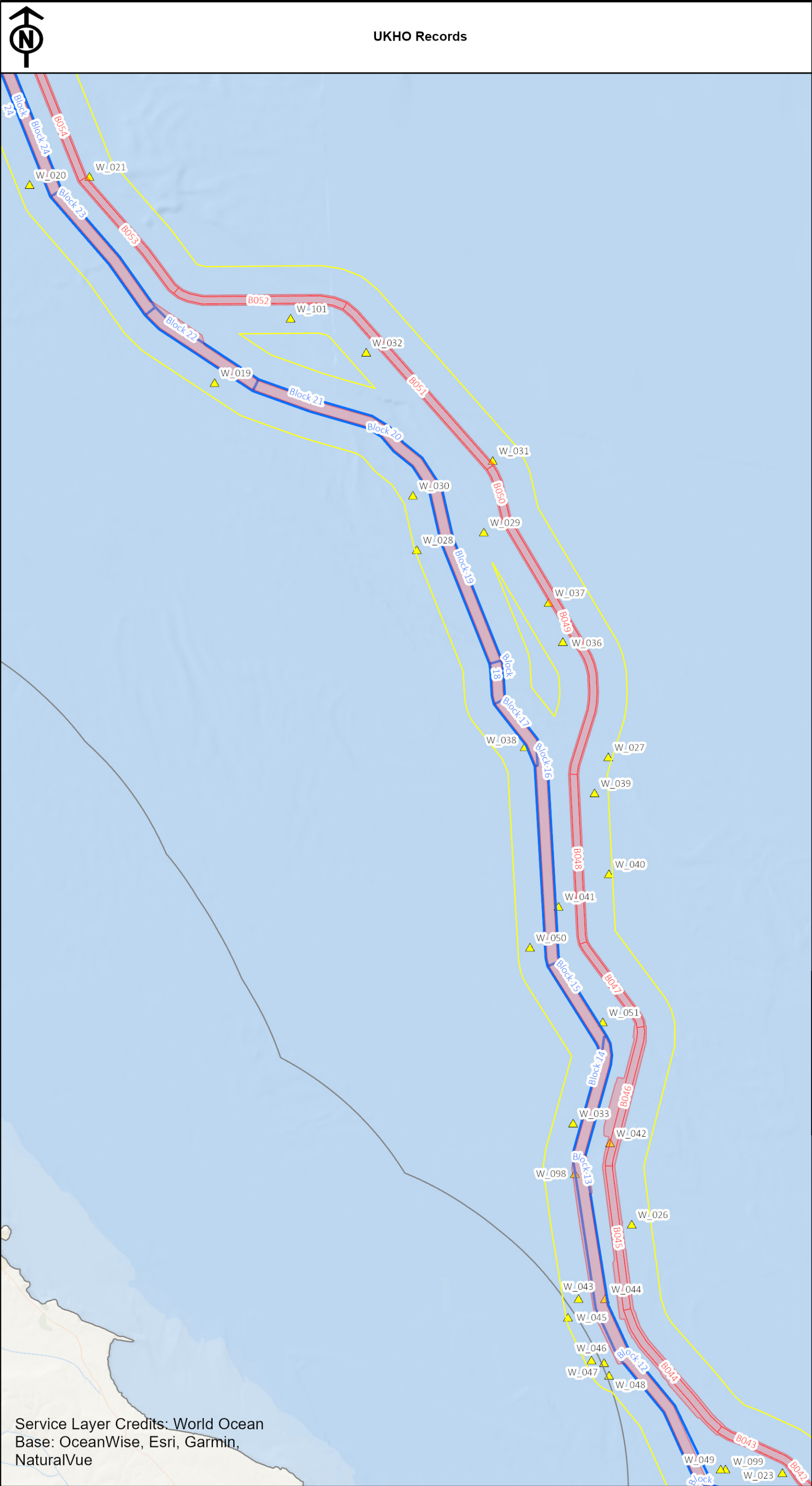
Figure 26-3

Drawing Reference

EGL-EXT-XX-XX-DL-X-003

Scale	Sheet Size	Sheet	Issue
1:200,000	A3	SHEET 2 OF 5	01

Service Layer Credits: World Ocean
Base: OceanWise, Esri, Garmin,
NaturalVue



Legend

- English Offshore Scheme draft Order Limits
- Study Area
- 12 NM Limit
- Scottish Adjacent Waters
- EGL 3 Block
- EGL 4 Block
- UKHO record

Notes

This drawing is scaled at paper size A3, therefore any prints taken at smaller sizes will affect accuracy of the measurement units and should not be scaled against.

Coordinate System: ETRS 1989 UTM Zone 30
Sheet X Centroid Coordinate: 697913.24E Sheet Y Centroid Coordinate: 6050033.09N

0 2.75 5.5 11 Kilometers

BACKGROUND MAPPING INFORMATION HAS BEEN REPRODUCED FROM THE ORDINANCE SURVEY BY PERMISSION OF ORDINANCE SURVEY OF THE CONTROLLER OF HER MAJESTY'S STATIONERY OFFICE. © CROWN COPYRIGHT AND DATABASE RIGHTS 2024 ORDINANCE SURVEY 0100031673.

01	17/04/2025	-	TB	KH	LD
Issue	Date	Remarks	Drawn	Checked	Approved

Title

UKHO Records

nationalgrid

Figure Number

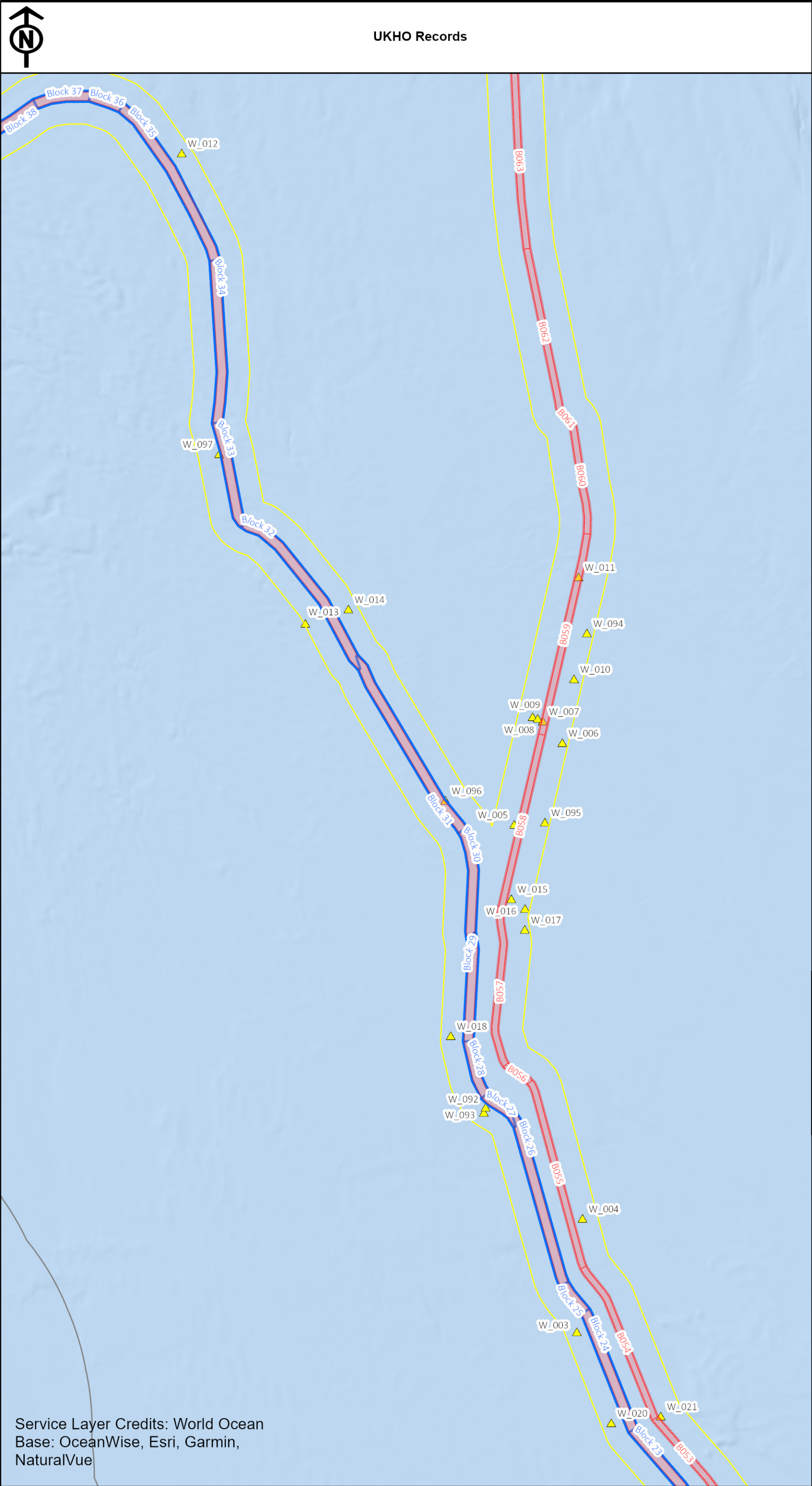
Figure 26-4

Drawing Reference

EGL-EXT-XX-XX-DL-X-004

Scale	Sheet Size	Sheet	Issue
1:257,961	A3	SHEET 3 OF 5	01

Service Layer Credits: World Ocean
Base: OceanWise, Esri, Garmin,
NaturalVue



Legend

- English Offshore Scheme draft Order Limits
- Study Area
- 12 NM Limit
- Scottish Adjacent Waters
- EGL 3 Block
- EGL 4 Block
- UKHO record

Notes

This drawing is scaled at paper size A3, therefore any prints taken at smaller sizes will affect accuracy of the measurement units and should not be scaled against.

Coordinate System: ETRS 1989 UTM Zone 30
Sheet X Centroid Coordinate: 654291.25E Sheet Y Centroid Coordinate: 6145865.76N

0 3.25 6.5 13 Kilometers

BACKGROUND MAPPING INFORMATION HAS BEEN REPRODUCED FROM THE ORDINANCE SURVEY BY PERMISSION OF ORDINANCE SURVEY OF THE CONTROLLER OF HER MAJESTY'S STATIONERY OFFICE. © CROWN COPYRIGHT AND DATABASE RIGHTS 2024 ORDINANCE SURVEY 0100031673.

01	17/04/2025	-	TB	KH	LD
Issue	Date	Remarks	Drawn	Checked	Approved

Title

UKHO Records

nationalgrid

Figure Number

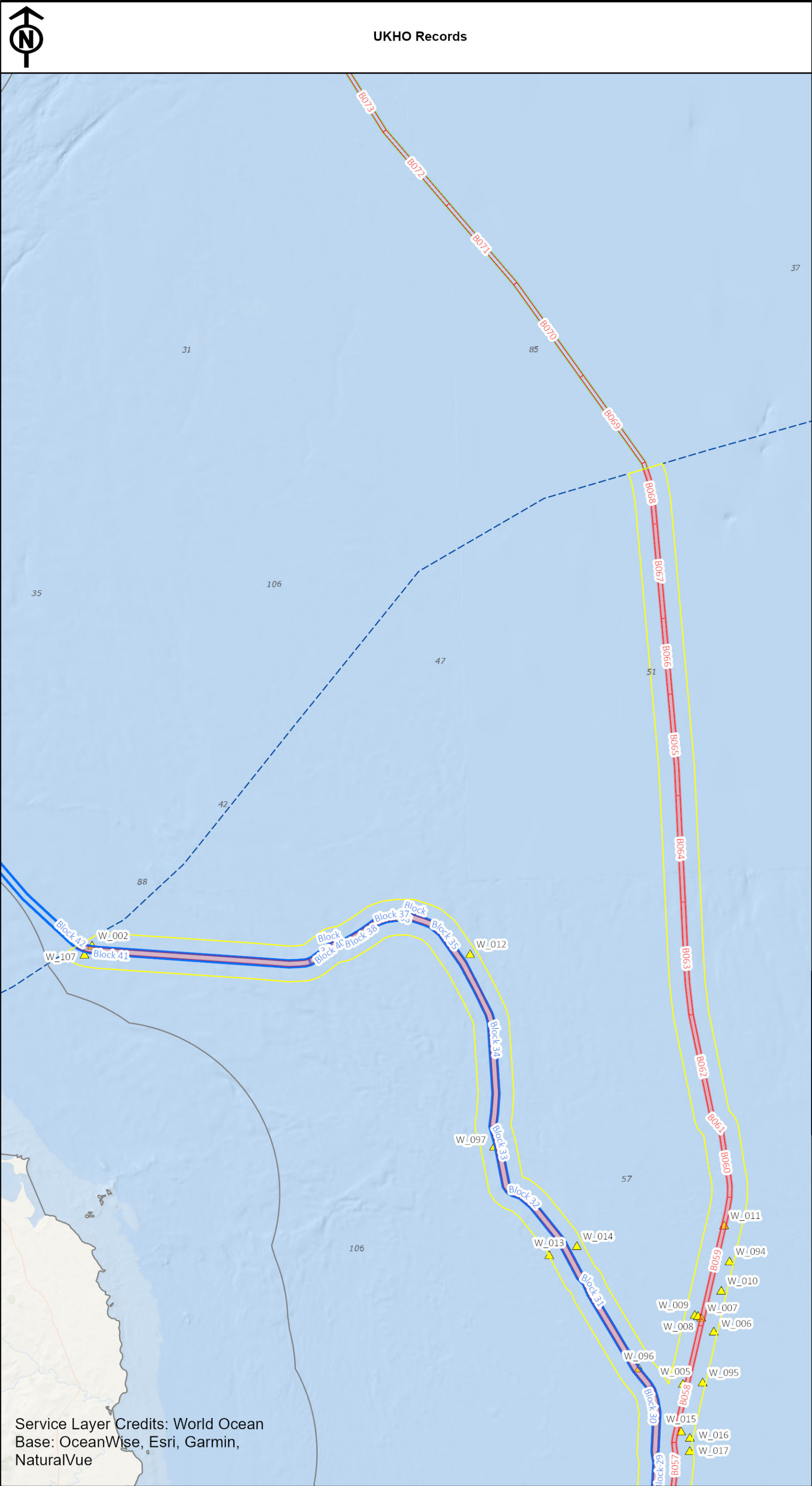
Figure 26-5

Drawing Reference

EGL-EXT-XX-XX-DL-X-005

Scale	Sheet Size	Sheet	Issue
1:312,500	A3	SHEET 4 OF 5	01

Service Layer Credits: World Ocean
Base: OceanWise, Esri, Garmin,
NaturalVue



Legend

- English Offshore Scheme draft Order Limits
- EGL 4 Scottish Waters
- EGL 3 Scottish Waters
- Study Area
- 12 NM Limit
- Scottish Adjacent Waters
- EGL 3 Block
- EGL 4 Block
- UKHO record

Notes

This drawing is scaled at paper size A3, therefore any prints taken at smaller sizes will affect accuracy of the measurement units and should not be scaled against.

Coordinate System: ETRS 1989 UTM Zone 30
Sheet X Centroid Coordinate: 626863.74E Sheet Y Centroid Coordinate: 6221737.16N

0 5 10 20 Kilometers

BACKGROUND MAPPING INFORMATION HAS BEEN REPRODUCED FROM THE ORDINANCE SURVEY BY PERMISSION OF ORDINANCE SURVEY OF THE CONTROLLER OF HER MAJESTY'S STATIONERY OFFICE. © CROWN COPYRIGHT AND DATABASE RIGHTS 2024 ORDINANCE SURVEY 0100031673.

01	17/04/2025	-	TB	KH	LD
Issue	Date	Remarks	Drawn	Checked	Approved

Title

UKHO Records

nationalgrid

Figure Number

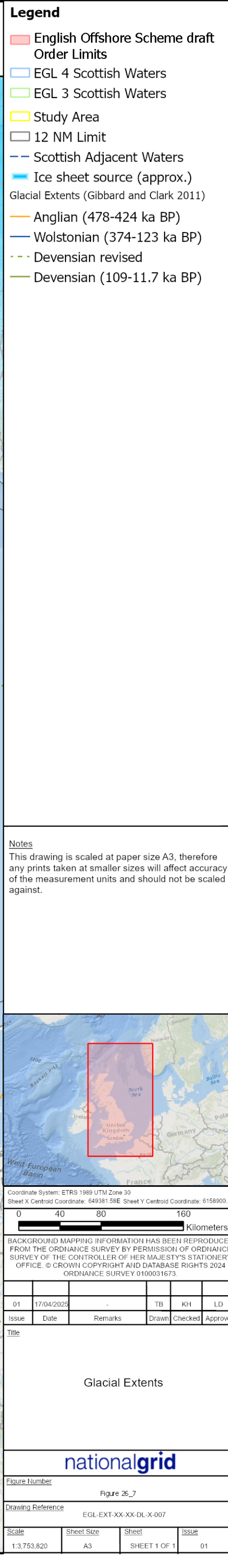
Figure 26_6

Drawing Reference

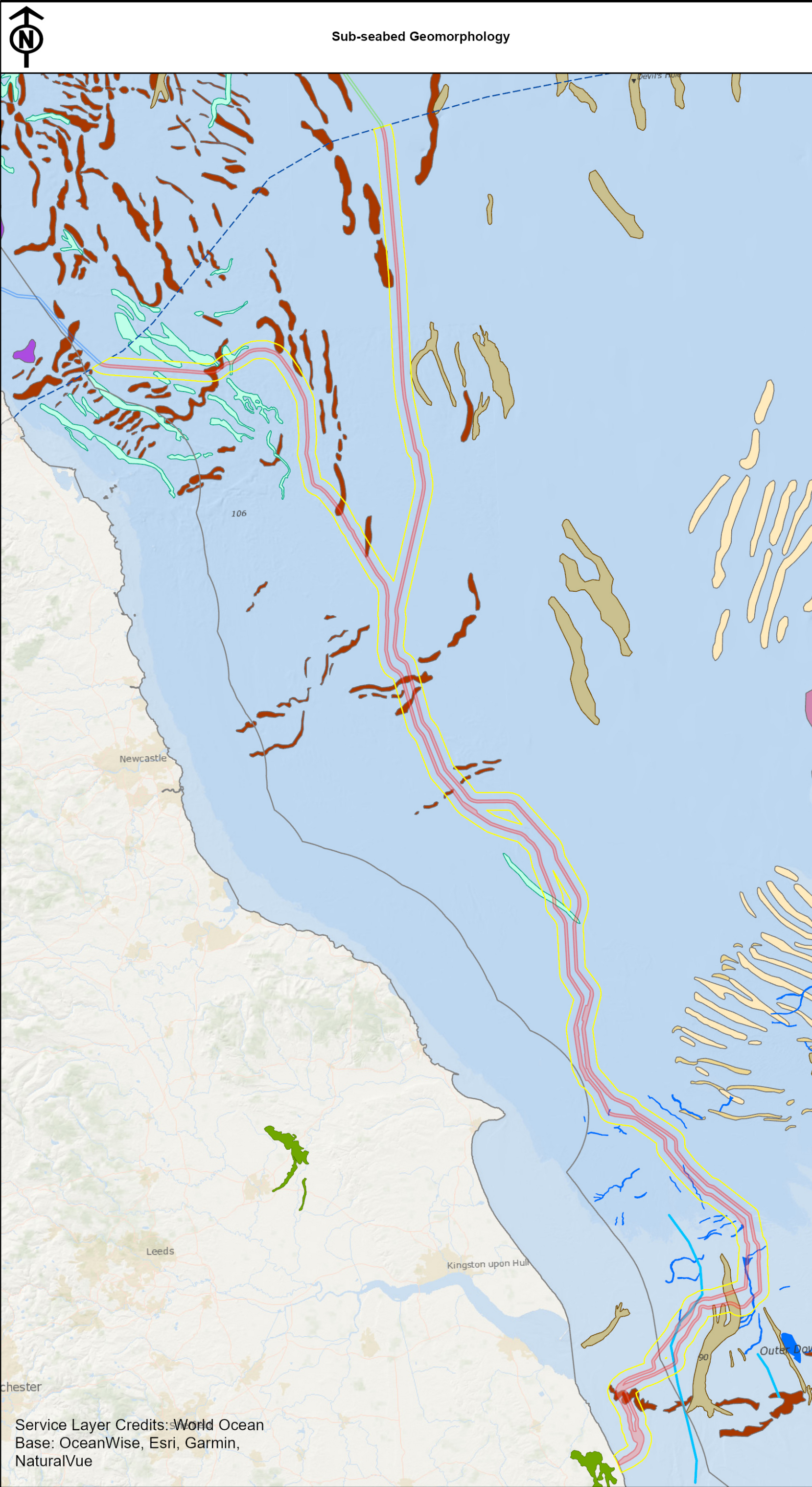
EGL-EXT-XX-XX-DL-X-006

Scale	Sheet Size	Sheet	Issue
1:488,281	A3	SHEET 5 OF 5	01

Service Layer Credits: World Ocean Base: OceanWise, Esri, Garmin, NaturalVue



COPYRIGHT: NOT TO BE REPRODUCED WITHOUT THE WRITTEN PERMISSION OF NATIONAL GRID ELECTRICITY TRANSMISSION Plc



Legend

- English Offshore Scheme draft Order Limits
- EGL 4 Scottish Waters
- EGL 3 Scottish Waters
- Study Area
- 12 NM Limit
- Scottish Adjacent Waters
- BRITICE (Clark et al. 2017)
- Sub-glacial tunnel
- Moraine (polygon)
- EMODnet
- Channel type
 - Fluvial channel
 - Glacial meltwater channel
 - Open tunnel valley
- landform
 - drumlin field
 - moraine
 - sand ridge
 - sediment bank
 - sediment wave

Notes

This drawing is scaled at paper size A3, therefore any prints taken at smaller sizes will affect accuracy of the measurement units and should not be scaled against.

Coordinate System: ETRS 1989 UTM Zone 30
Sheet X Centroid Coordinate: 665048.49E Sheet Y Centroid Coordinate: 6088994.67N

0 10 20 40 Kilometers

BACKGROUND MAPPING INFORMATION HAS BEEN REPRODUCED FROM THE ORDINANCE SURVEY BY PERMISSION OF ORDINANCE SURVEY OF THE CONTROLLER OF HER MAJESTY'S STATIONERY OFFICE. © CROWN COPYRIGHT AND DATABASE RIGHTS 2024 ORDINANCE SURVEY 0100031673.

01	17/04/2025	-	TB	KH	LD
Issue	Date	Remarks	Drawn	Checked	Approved

Title

Sub-seabed Geomorphology

nationalgrid

Figure Number

Figure 28-8

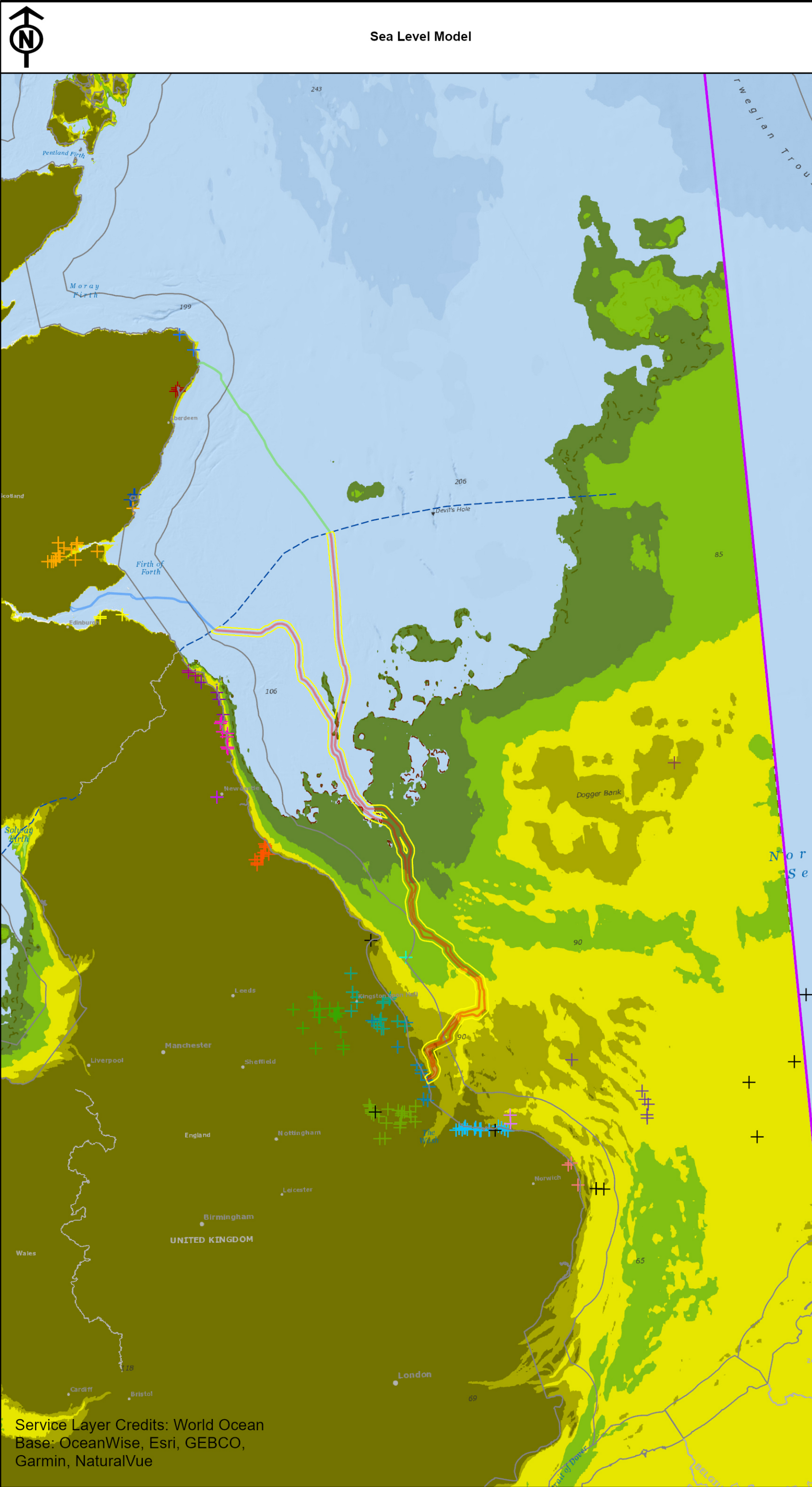
Drawing Reference

EGL-EXT-XX-XX-DL-X-008

Scale	Sheet Size	Sheet	Issue
1:984,041	A3	SHEET 1 OF 1	01

Service Layer Credits: World Ocean
Base: OceanWise, Esri, Garmin,
NaturalVue

COPYRIGHT: NOT TO BE REPRODUCED WITHOUT THE WRITTEN PERMISSION OF NATIONAL GRID ELECTRICITY TRANSMISSION PLC



Legend

- English Offshore Scheme draft Order Limits
- EGL 4 Scottish Waters
- EGL 3 Scottish Waters
- Study Area
- 12 NM Limit
- Scottish Adjacent Waters
- SLIP (Cohen et al. 2021)
- SLIP (Shennan et al. 2018)
- Aberdeen
- Clyde
- Dogger Bank
- East Anglia
- Fens
- Humber (Inner Estuary)
- Humber (Outer Estuary)
- Lincolnshire Marshes
- Montrose
- NE England (Central)
- NE England (North)
- NE England (South)
- NE England (Tyne)
- NE Scotland
- Norfolk
- Offshore (E of Yorkshire)
- Offshore (N of Norfolk)
- Offshore (NE of Norfolk)
- SE Scotland
- Tay Valley
- Tees
- Palaeo-coastline (Brooks et al. 2011)
- Limit of model
- 6,000 BP
- 8,000 BP
- 10,000 BP
- 13,000 BP
- 16,000 BP
- 18,000 BP

Notes

This drawing is scaled at paper size A3, therefore any prints taken at smaller sizes will affect accuracy of the measurement units and should not be scaled against.

Coordinate System: ETRS 1989 UTM Zone 30
Sheet X Centroid Coordinate: 708383.28E Sheet Y Centroid Coordinate: 6101656.98N

0 25 50 100 Kilometers

BACKGROUND MAPPING INFORMATION HAS BEEN REPRODUCED FROM THE ORDINANCE SURVEY BY PERMISSION OF ORDINANCE SURVEY OF THE CONTROLLER OF HER MAJESTY'S STATIONERY OFFICE. © CROWN COPYRIGHT AND DATABASE RIGHTS 2024 ORDINANCE SURVEY 0100031673.

01	17/04/2025	-	TB	KH	LD
Issue	Date	Remarks	Drawn	Checked	Approved

Title

Sea Level Model

nationalgrid

Figure Number

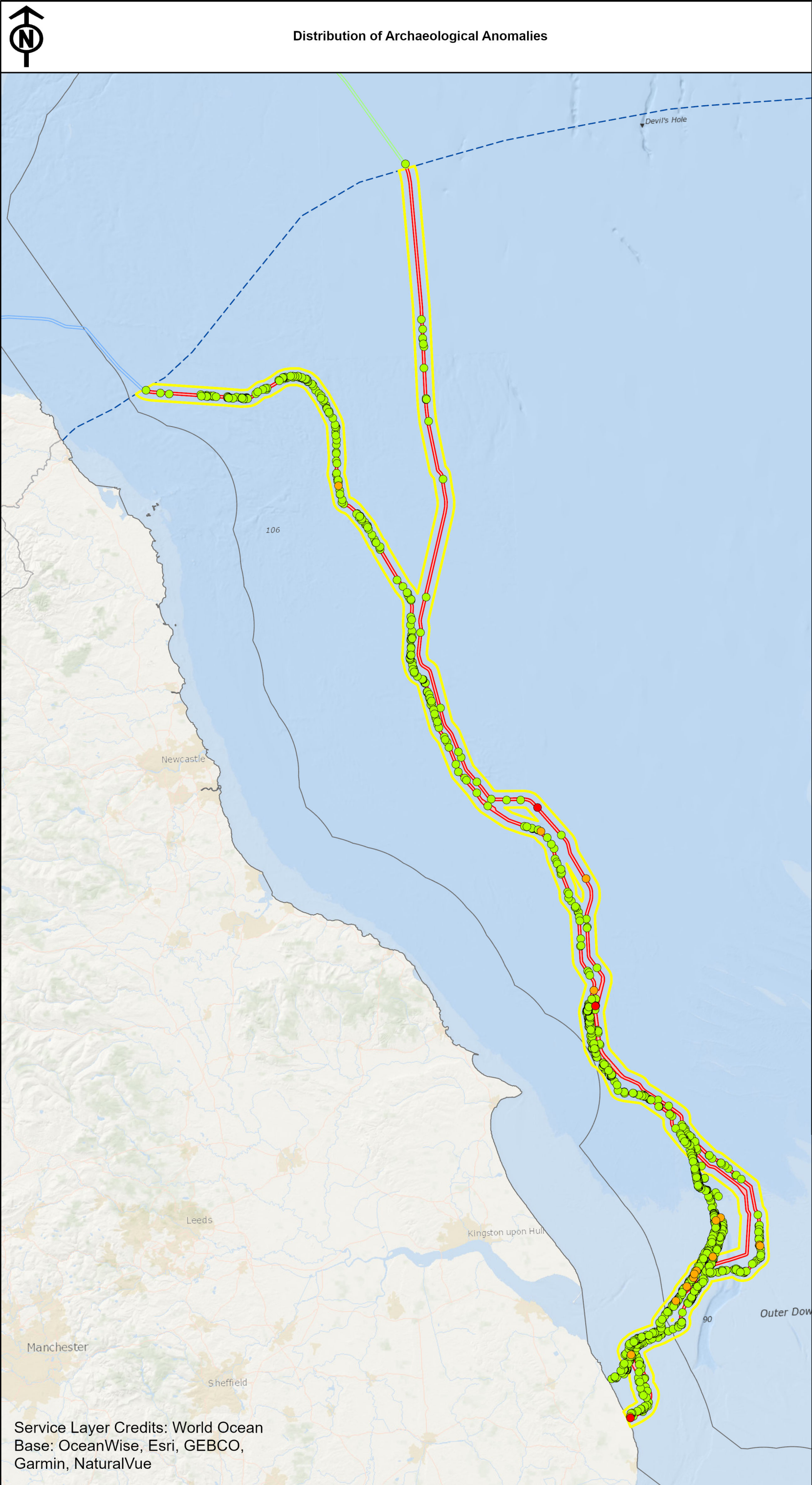
Figure 26_9

Drawing Reference

EGL-EXT-XX-XX-DL-X-009

Scale	Sheet Size	Sheet	Issue
1:2,402,445	A3	SHEET 1 OF 1	01

Service Layer Credits: World Ocean
Base: OceanWise, Esri, GEBCO,
Garmin, NaturalVue



English Offshore Scheme draft Order Limits

EGL 4 Scottish Waters

EGL 3 Scottish Waters

Study Area

12 NM Limit

Scottish Adjacent Waters

Archaeological Anomalies Potential

High

Medium

Low

Notes

This drawing is scaled at paper size A3, therefore any prints taken at smaller sizes will affect accuracy of the measurement units and should not be scaled against.

North Sea

Irish Sea

Leeds

Manchester

Birmingham

Coordinate System: ETRS 1989 UTM Zone 30N

Sheet X Centroid Coordinate: 658341.4E

Sheet Y Centroid Coordinate: 6089131.15N

0

10

20

40

Kilometers

BACKGROUND MAPPING INFORMATION HAS BEEN REPRODUCED FROM THE ORDNANCE SURVEY BY PERMISSION OF ORDNANCE SURVEY OF THE CONTROLLER OF HER MAJESTY'S STATIONERY OFFICE. © CROWN COPYRIGHT AND DATABASE RIGHTS 2024

ORDNANCE SURVEY 0100031673.

01	17/04/2025	-	KH	TB	LD
Issue	Date	Remarks	Drawn	Checked	Approved

Title

Distribution of Archaeological Anomalies

nationalgrid

Figure Number

Figure 26_10

Drawing Reference

EGL-EXT-XX-XX-DL-X-010

Scale	Sheet Size	Sheet	Issue
1:1,051,042	A3	SHEET 1 OF 1	01

Service Layer Credits: World Ocean Base: OceanWise, Esri, GEBCO, Garmin, NaturalVue

COPYRIGHT: NOT TO BE REPRODUCED WITHOUT THE WRITTEN PERMISSION OF NATIONAL GRID ELECTRICITY TRANSMISSION Plc



Distribution of High Potential Archaeological Anomalies

Legend

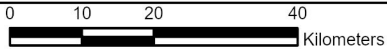
- English Offshore Scheme draft Order Limits
- EGL 4 Scottish Waters
- EGL 3 Scottish Waters
- Study Area
- 12 NM Limit
- Scottish Adjacent Waters
- Archaeological Anomalies Potential
 - High

Notes

This drawing is scaled at paper size A3, therefore any prints taken at smaller sizes will affect accuracy of the measurement units and should not be scaled against.



Coordinate System: ETRS 1989 UTM Zone 30N
Sheet X Centroid Coordinate: 658341.4E Sheet Y Centroid Coordinate: 6089131.15N



BACKGROUND MAPPING INFORMATION HAS BEEN REPRODUCED FROM THE ORDNANCE SURVEY BY PERMISSION OF ORDNANCE SURVEY OF THE CONTROLLER OF HER MAJESTY'S STATIONERY OFFICE. © CROWN COPYRIGHT AND DATABASE RIGHTS 2024 ORDNANCE SURVEY 0100031673.

01	17/04/2025	-	KH	TB	LD
Issue	Date	Remarks	Drawn	Checked	Approved

Title

Distribution of High Potential Archaeological Anomalies

nationalgrid

Figure Number

Figure 26_11

Drawing Reference

EGL-EXT-XX-XX-DL-X-011

Scale	Sheet Size	Sheet	Issue
1:1,051,042	A3	SHEET 1 OF 1	01

Service Layer Credits: World Ocean
Base: OceanWise, Esri, Garmin,
NaturalVue



Distribution of Medium Potential Archaeological Anomalies

Legend

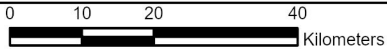
- English Offshore Scheme draft
- Order Limits
- EGL 4 Scottish Waters
- EGL 3 Scottish Waters
- Study Area
- 12 NM Limit
- Scottish Adjacent Waters
- Archaeological Anomalies
- Potential
 - Medium

Notes

This drawing is scaled at paper size A3, therefore any prints taken at smaller sizes will affect accuracy of the measurement units and should not be scaled against.



Coordinate System: ETRS 1989 UTM Zone 30N
Sheet X Centroid Coordinate: 658341.4E Sheet Y Centroid Coordinate: 6089131.15N



BACKGROUND MAPPING INFORMATION HAS BEEN REPRODUCED FROM THE ORDNANCE SURVEY BY PERMISSION OF ORDNANCE SURVEY OF THE CONTROLLER OF HER MAJESTY'S STATIONERY OFFICE. © CROWN COPYRIGHT AND DATABASE RIGHTS 2024 ORDNANCE SURVEY 0100031673.

01	17/04/2025	-	KH	TB	LD
Issue	Date	Remarks	Drawn	Checked	Approved

Title

Distribution of Medium Potential Archaeological Anomalies

nationalgrid

Figure Number

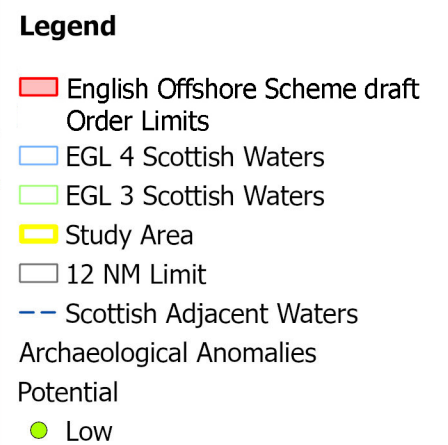
Figure 26_12

Drawing Reference

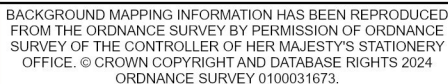
EGL-EXT-XX-XX-DL-X-012

Scale	Sheet Size	Sheet	Issue
1:1,051,042	A3	SHEET 1 OF 1	01

Service Layer Credits: World Ocean
Base: OceanWise, Esri, GEBCO,
Garmin, NaturalVue



This drawing is scaled at paper size A3, therefore any prints taken at smaller sizes will affect accuracy of the measurement units and should not be scaled against.



Title

Distribution of Low Potential Archaeological Anomalies

national**grid**

Figure Number

Figure 26_13

Drawing Reference

EGL-EXT-XX-XX-DL-X-013

<u>Scale</u>	<u>Sheet Size</u>	<u>Sheet</u>	<u>Issue</u>
1:1,051,042	A3	SHEET 1 OF 1	01

Service Layer Credits: World Ocean
Base: OceanWise, Esri, GEBCO,
Garmin, NaturalVue



Medium Potential EGL3_39

Legend

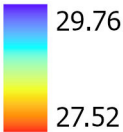
Archaeological Anomalies

Potential

- High
- Medium

Multibeam Bathymetry

Depth (m LAT)

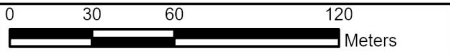


Notes

This drawing is scaled at paper size A3, therefore any prints taken at smaller sizes will affect accuracy of the measurement units and should not be scaled against.



Coordinate System: ETRS 1989 UTM Zone 30N
Sheet X Centroid Coordinate: 747744.19E Sheet Y Centroid Coordinate: 5964547.55N



BACKGROUND MAPPING INFORMATION HAS BEEN REPRODUCED FROM THE ORDNANCE SURVEY BY PERMISSION OF ORDNANCE SURVEY OF THE CONTROLLER OF HER MAJESTY'S STATIONERY OFFICE. © CROWN COPYRIGHT AND DATABASE RIGHTS 2024
ORDNANCE SURVEY 0100031673.

01	17/04/2025	-	KH	TB	LD
Issue	Date	Remarks	Drawn	Checked	Approved

Title

Medium Potential EGL3_39

nationalgrid

Figure Number

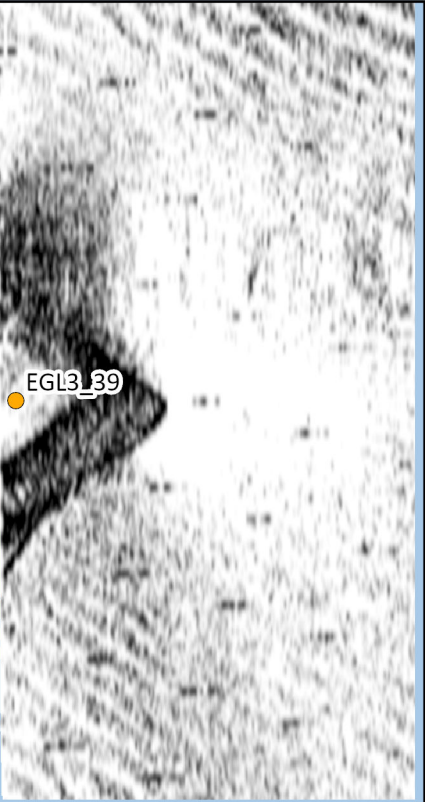
Figure 26_14

Drawing Reference

EGL-EXT-XX-XX-DL-X-014

Scale	Sheet Size	Sheet	Issue
1:2,757	A3	SHEET 1 OF 1	01

Service Layer Credits: World Ocean Reference: Esri, Garmin, geonames.org





Medium Potential EGL3_242

Legend

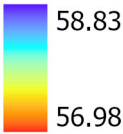
Archaeological Anomalies

Potential

- High
- Medium

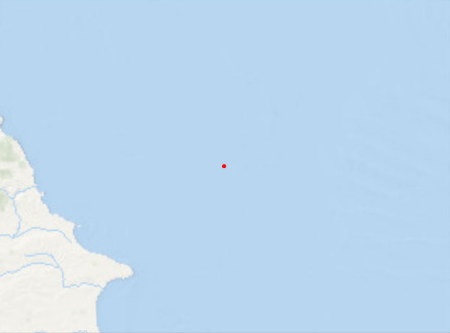
Multibeam Bathymetry

Depth (m LAT)

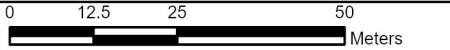


Notes

This drawing is scaled at paper size A3, therefore any prints taken at smaller sizes will affect accuracy of the measurement units and should not be scaled against.



Coordinate System: ETRS 1989 UTM Zone 30N
Sheet X Centroid Coordinate: 712171.58E Sheet Y Centroid Coordinate: 6024812.37N



BACKGROUND MAPPING INFORMATION HAS BEEN REPRODUCED FROM THE ORDNANCE SURVEY BY PERMISSION OF ORDNANCE SURVEY OF THE CONTROLLER OF HER MAJESTY'S STATIONERY OFFICE. © CROWN COPYRIGHT AND DATABASE RIGHTS 2024
ORDNANCE SURVEY 0100031673.

01	17/04/2025	-	KH	TB	LD
Issue	Date	Remarks	Drawn	Checked	Approved

Title

Medium Potential EGL3_242

nationalgrid

Figure Number

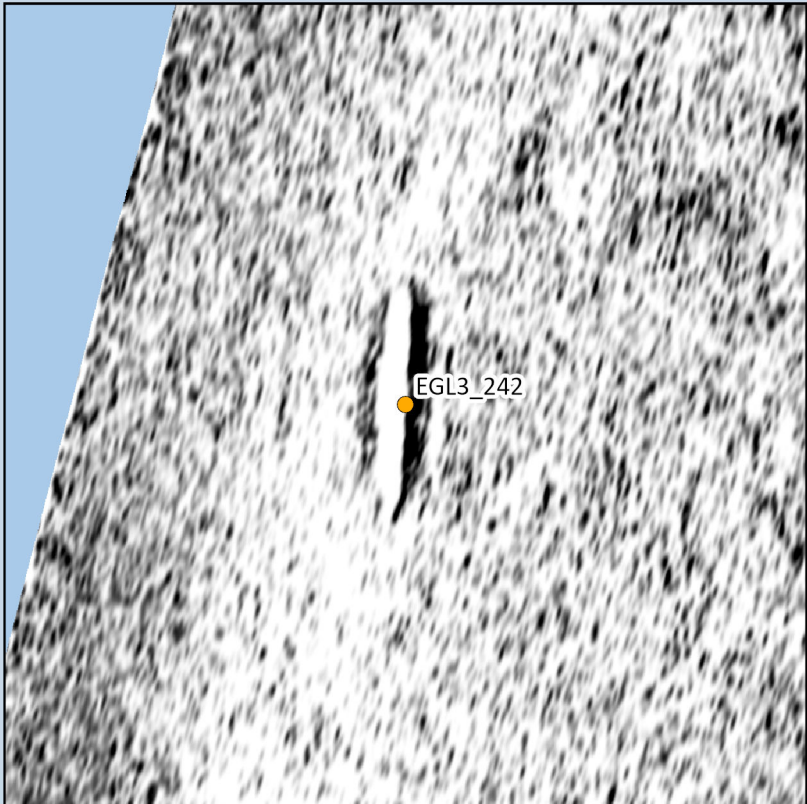
Figure 26_15

Drawing Reference

EGL-EXT-XX-XX-DL-X-015

Scale	Sheet Size	Sheet	Issue
1:1,129	A3	SHEET 1 OF 1	01

Service Layer Credits: World Ocean Reference: Esri, Garmin, geonames.org





Medium Potential EGL3_282

Legend

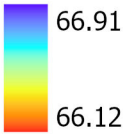
Archaeological Anomalies

Potential

- High
- Medium

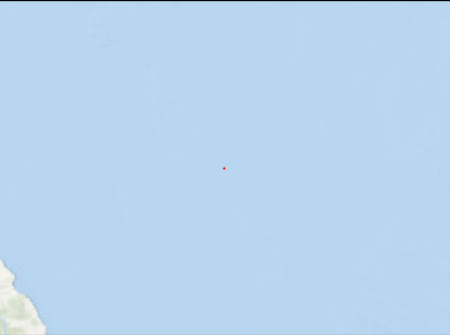
Multibeam Bathymetry

Depth (m LAT)

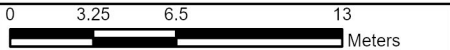


Notes

This drawing is scaled at paper size A3, therefore any prints taken at smaller sizes will affect accuracy of the measurement units and should not be scaled against.



Coordinate System: ETRS 1989 UTM Zone 30N
Sheet X Centroid Coordinate: 709403.52E Sheet Y Centroid Coordinate: 6061011.99N



BACKGROUND MAPPING INFORMATION HAS BEEN REPRODUCED FROM THE ORDNANCE SURVEY BY PERMISSION OF ORDNANCE SURVEY OF THE CONTROLLER OF HER MAJESTY'S STATIONERY OFFICE. © CROWN COPYRIGHT AND DATABASE RIGHTS 2024
ORDNANCE SURVEY 0100031673.

01	17/04/2025	-	KH	TB	LD
Issue	Date	Remarks	Drawn	Checked	Approved

Title

Medium Potential EGL3_282

nationalgrid

Figure Number

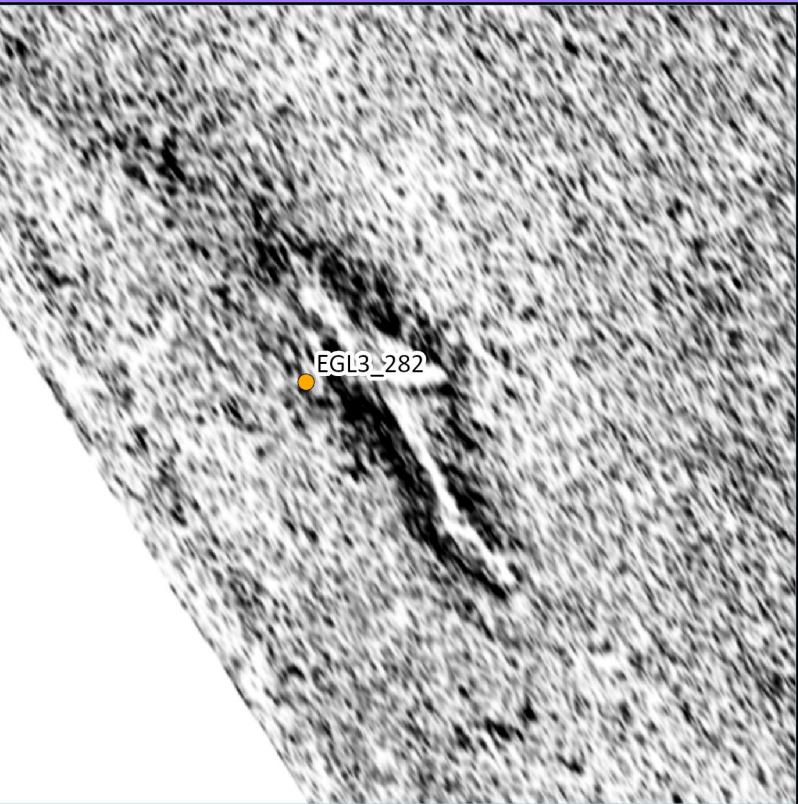
Figure 26-16

Drawing Reference

EGL-EXT-XX-XX-DL-X-016

Scale	Sheet Size	Sheet	Issue
1:296	A3	SHEET 1 OF 1	01

Service Layer Credits: World Ocean Reference: Esri, Garmin, geonames.org





Medium Potential EGL3_507

Legend

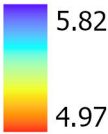
Archaeological Anomalies

Potential

- High
- Medium

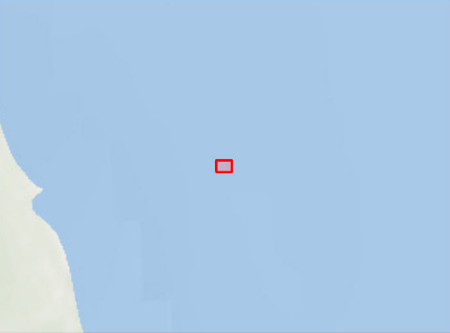
Multibeam Bathymetry

Depth (m LAT)



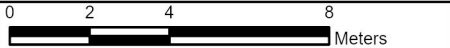
Notes

This drawing is scaled at paper size A3, therefore any prints taken at smaller sizes will affect accuracy of the measurement units and should not be scaled against.



Coordinate System: ETRS 1989 UTM Zone 30N

Sheet X Centroid Coordinate: 722080.35E Sheet Y Centroid Coordinate: 5907698.58N



BACKGROUND MAPPING INFORMATION HAS BEEN REPRODUCED FROM THE ORDNANCE SURVEY BY PERMISSION OF ORDNANCE SURVEY OF THE CONTROLLER OF HER MAJESTY'S STATIONERY OFFICE. © CROWN COPYRIGHT AND DATABASE RIGHTS 2024 ORDNANCE SURVEY 0100031673.

01	17/04/2025	-	KH	TB	LD
Issue	Date	Remarks	Drawn	Checked	Approved

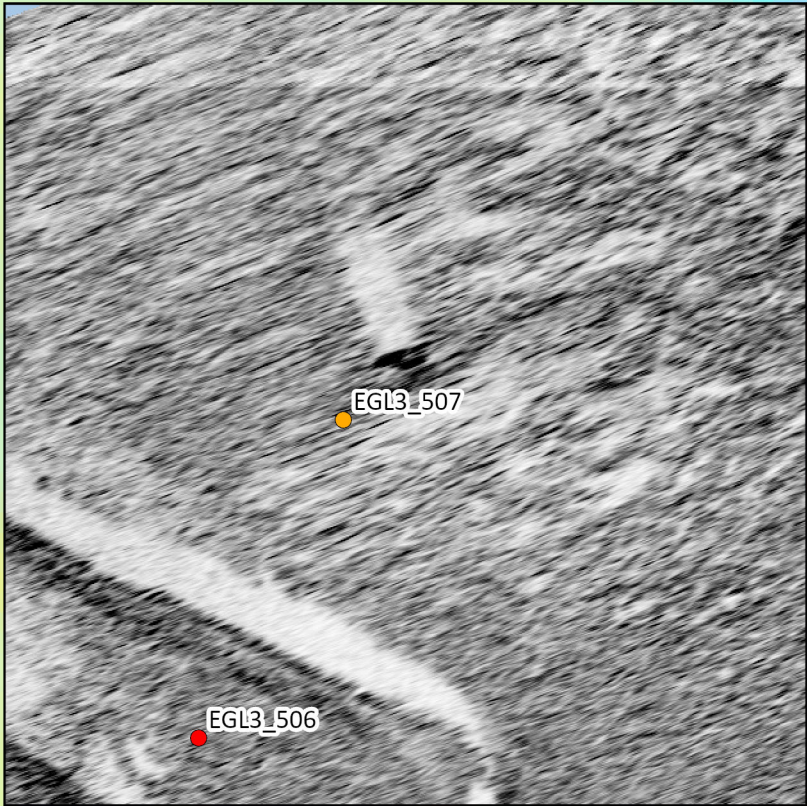
Title

Medium Potential EGL3_507

nationalgrid

Figure Number			
Figure 26_17			
Drawing Reference			
EGL-EXT-XX-XX-DL-X-017			
Scale	Sheet Size	Sheet	Issue
1:189	A3	SHEET 1 OF 1	01

Service Layer Credits: World Ocean Reference: Esri, Garmin, geonames.org





Medium Potential EGL3_529

Legend

Archaeological Anomalies

Potential

● High

● Medium

Multibeam Bathymetry

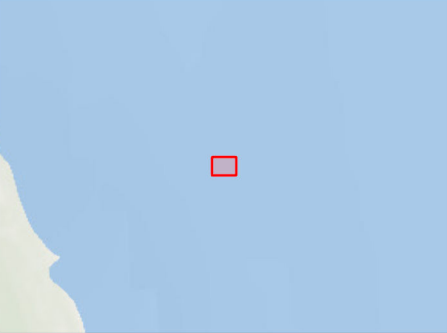
Depth (m LAT)

5.61

4.94

Notes

This drawing is scaled at paper size A3, therefore any prints taken at smaller sizes will affect accuracy of the measurement units and should not be scaled against.



Coordinate System: ETRS 1989 UTM Zone 30N
Sheet X Centroid Coordinate: 722008.54E Sheet Y Centroid Coordinate: 5907982.47N

0 3.25 6.5 13
Meters

BACKGROUND MAPPING INFORMATION HAS BEEN REPRODUCED FROM THE ORDNANCE SURVEY BY PERMISSION OF ORDNANCE SURVEY OF THE CONTROLLER OF HER MAJESTY'S STATIONERY OFFICE. © CROWN COPYRIGHT AND DATABASE RIGHTS 2024
ORDNANCE SURVEY 0100031673.

01	17/04/2025	-	KH	TB	LD
Issue	Date	Remarks	Drawn	Checked	Approved

Title

Medium Potential EGL3_529

nationalgrid

Figure Number

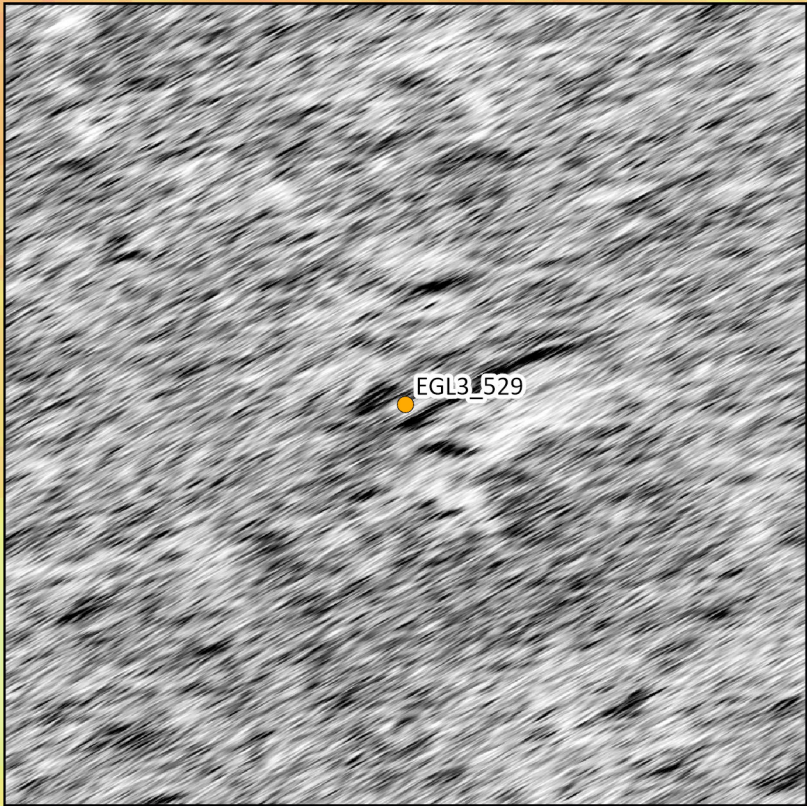
Figure 26_18

Drawing Reference

EGL-EXT-XX-XX-DL-X-018

Scale	Sheet Size	Sheet	Issue
1:296	A3	SHEET 1 OF 1	01

Service Layer Credits: World Ocean Reference: Esri, Garmin, geonames.org





Medium Potential EGL3_571

Legend

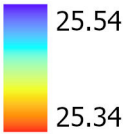
Archaeological Anomalies

Potential

- High
- Medium

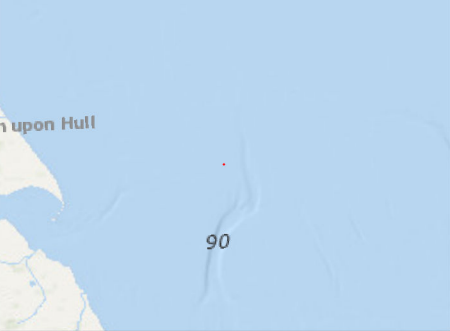
Multibeam Bathymetry

Depth (m LAT)

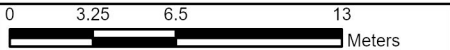


Notes

This drawing is scaled at paper size A3, therefore any prints taken at smaller sizes will affect accuracy of the measurement units and should not be scaled against.



Coordinate System: ETRS 1989 UTM Zone 30N
Sheet X Centroid Coordinate: 745507.88E Sheet Y Centroid Coordinate: 5953475.96N



BACKGROUND MAPPING INFORMATION HAS BEEN REPRODUCED FROM THE ORDNANCE SURVEY BY PERMISSION OF ORDNANCE SURVEY OF THE CONTROLLER OF HER MAJESTY'S STATIONERY OFFICE. © CROWN COPYRIGHT AND DATABASE RIGHTS 2024 ORDNANCE SURVEY 0100031673.

01	17/04/2025	-	KH	TB	LD
Issue	Date	Remarks	Drawn	Checked	Approved

Title

Medium Potential EGL3_571

nationalgrid

Figure Number

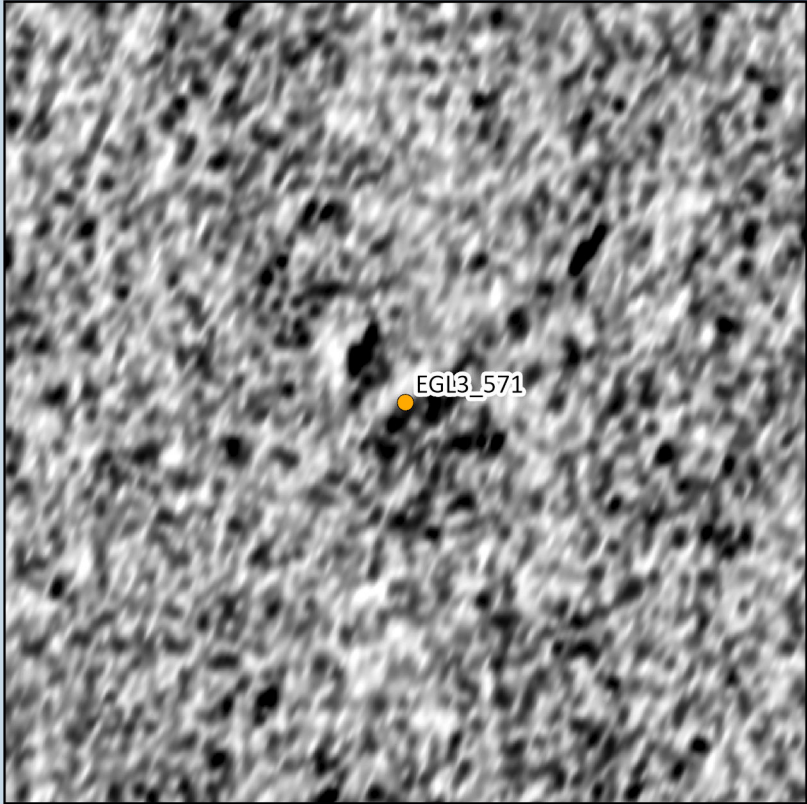
Figure 26_19

Drawing Reference

EGL-EXT-XX-XX-DL-X-019

Scale	Sheet Size	Sheet	Issue
1:296	A3	SHEET 1 OF 1	01

Service Layer Credits: World Ocean Reference: Esri, Garmin, geonames.org





Medium Potential EGL3_681

Legend

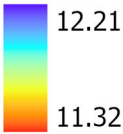
Archaeological Anomalies

Potential

- High
- Medium

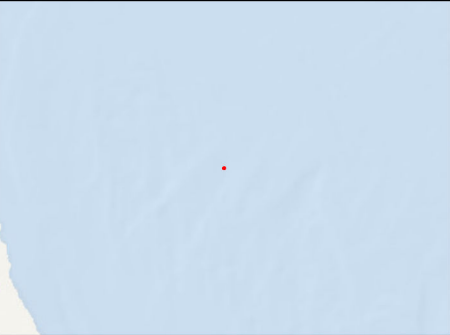
Multibeam Bathymetry

Depth (m LAT)

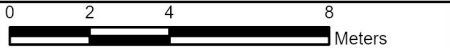


Notes

This drawing is scaled at paper size A3, therefore any prints taken at smaller sizes will affect accuracy of the measurement units and should not be scaled against.



Coordinate System: ETRS 1989 UTM Zone 30N
Sheet X Centroid Coordinate: 722250.14E Sheet Y Centroid Coordinate: 5925643.94N



BACKGROUND MAPPING INFORMATION HAS BEEN REPRODUCED FROM THE ORDNANCE SURVEY BY PERMISSION OF ORDNANCE SURVEY OF THE CONTROLLER OF HER MAJESTY'S STATIONERY OFFICE. © CROWN COPYRIGHT AND DATABASE RIGHTS 2024
ORDNANCE SURVEY 0100031673.

01	17/04/2025	-	KH	TB	LD
Issue	Date	Remarks	Drawn	Checked	Approved

Title

Medium Potential EGL3_681

nationalgrid

Figure Number

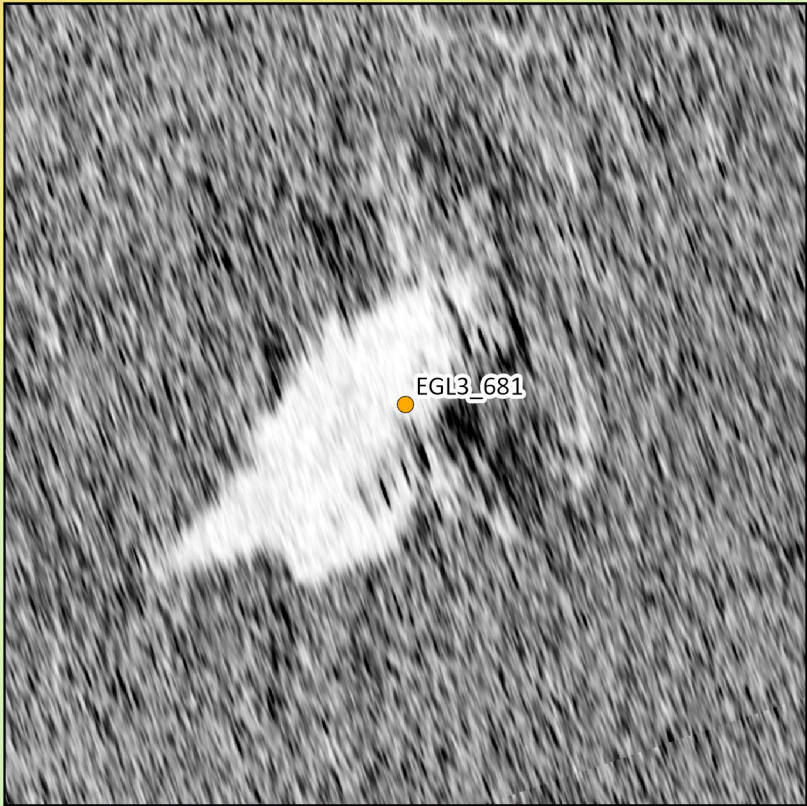
Figure 26_20

Drawing Reference

EGL-EXT-XX-XX-DL-X-020

Scale	Sheet Size	Sheet	Issue
1:189	A3	SHEET 1 OF 1	01

Service Layer Credits: World Ocean Base: OceanWise, Esri, Garmin,





Medium Potential EGL3_1551

Legend

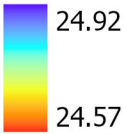
Archaeological Anomalies

Potential

- High
- Medium

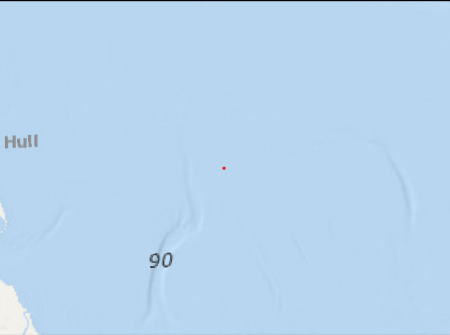
Multibeam Bathymetry

Depth (m LAT)

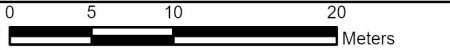


Notes

This drawing is scaled at paper size A3, therefore any prints taken at smaller sizes will affect accuracy of the measurement units and should not be scaled against.



Coordinate System: ETRS 1989 UTM Zone 30N
Sheet X Centroid Coordinate: 758758.43E Sheet Y Centroid Coordinate: 5956905.88N



BACKGROUND MAPPING INFORMATION HAS BEEN REPRODUCED FROM THE ORDNANCE SURVEY BY PERMISSION OF ORDNANCE SURVEY OF THE CONTROLLER OF HER MAJESTY'S STATIONERY OFFICE. © CROWN COPYRIGHT AND DATABASE RIGHTS 2024
ORDNANCE SURVEY 0100031673.

01	17/04/2025	-	KH	TB	LD
Issue	Date	Remarks	Drawn	Checked	Approved

Title

Medium Potential EGL3_1551

nationalgrid

Figure Number

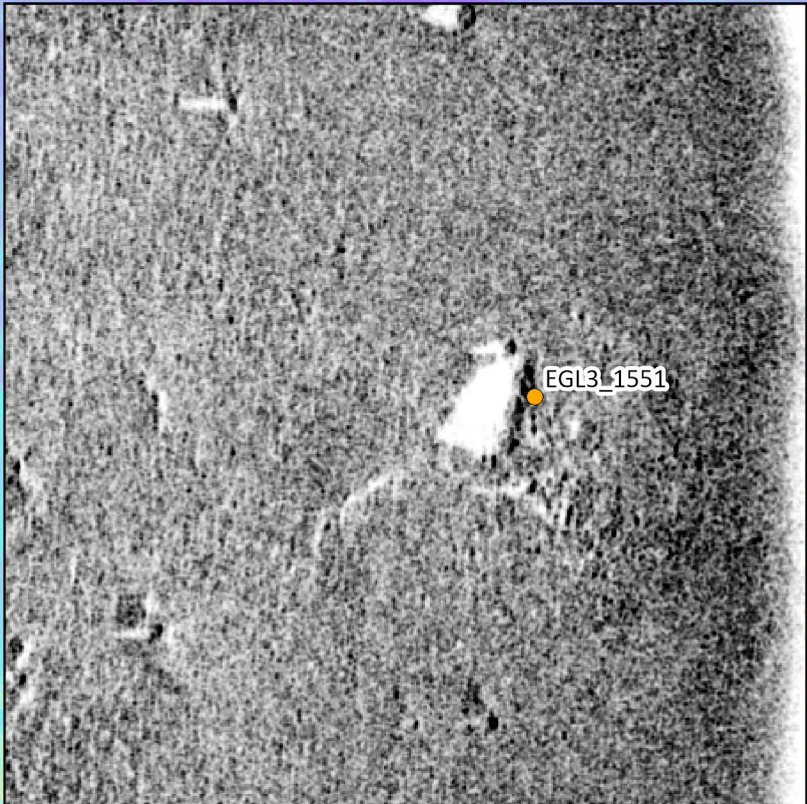
Figure 26_21

Drawing Reference

EGL-EXT-XX-XX-DL-X-021

Scale	Sheet Size	Sheet	Issue
1:463	A3	SHEET 1 OF 1	01

Service Layer Credits: World Ocean Reference: Esri, Garmin, geonames.org





Medium Potential EGL3_1571

Legend

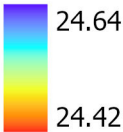
Archaeological Anomalies

Potential

- High
- Medium

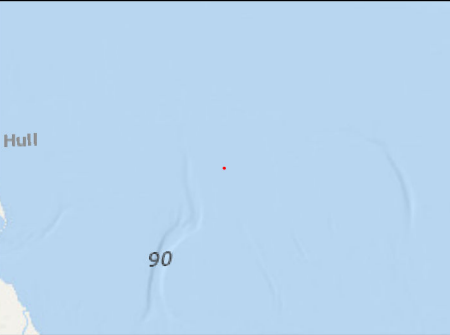
Multibeam Bathymetry

Depth (m LAT)

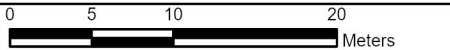


Notes

This drawing is scaled at paper size A3, therefore any prints taken at smaller sizes will affect accuracy of the measurement units and should not be scaled against.



Coordinate System: ETRS 1989 UTM Zone 30N
Sheet X Centroid Coordinate: 758929.73E Sheet Y Centroid Coordinate: 5956596.77N



BACKGROUND MAPPING INFORMATION HAS BEEN REPRODUCED FROM THE ORDNANCE SURVEY BY PERMISSION OF ORDNANCE SURVEY OF THE CONTROLLER OF HER MAJESTY'S STATIONERY OFFICE. © CROWN COPYRIGHT AND DATABASE RIGHTS 2024
ORDNANCE SURVEY 0100031673.

01	17/04/2025	-	KH	TB	LD
Issue	Date	Remarks	Drawn	Checked	Approved

Title

Medium Potential EGL3_1571

nationalgrid

Figure Number

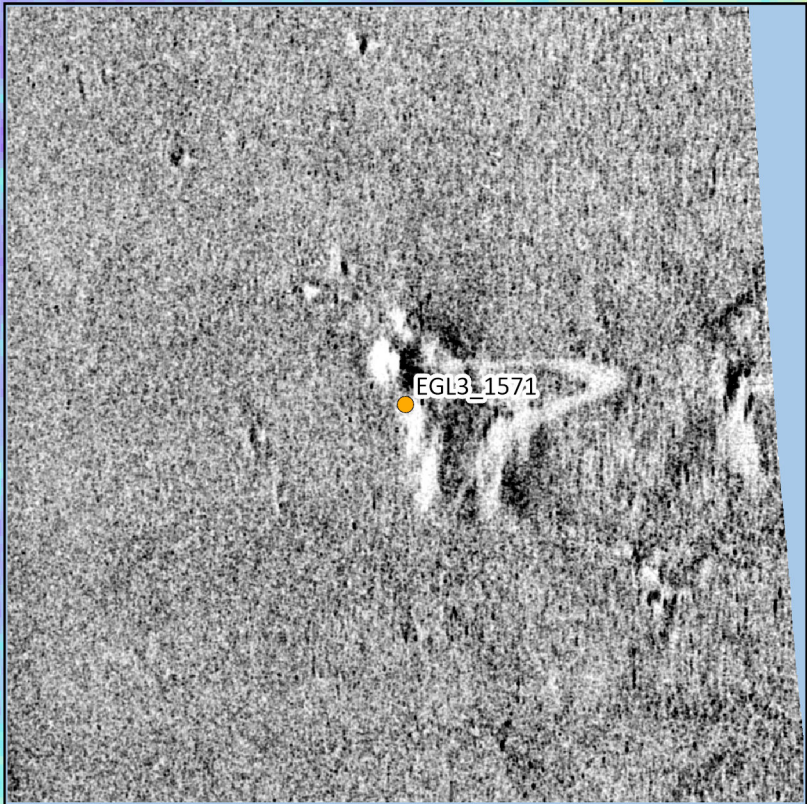
Figure 26_22

Drawing Reference

EGL-EXT-XX-XX-DL-X-022

Scale	Sheet Size	Sheet	Issue
1:463	A3	SHEET 1 OF 1	01

Service Layer Credits: World Ocean Reference: Esri, Garmin, geonames.org





Medium Potential EGL4_729

Legend

Archaeological Anomalies

Potential

● Medium

Multibeam Bathymetry

Depth (m LAT)

-16.26

-16.63

Notes

This drawing is scaled at paper size A3, therefore any prints taken at smaller sizes will affect accuracy of the measurement units and should not be scaled against.



Coordinate System: ETRS 1989 UTM Zone 30N

Sheet X Centroid Coordinate: 734968.56E Sheet Y Centroid Coordinate: 5940961.2N

0 2.75 5.5 11 Meters

BACKGROUND MAPPING INFORMATION HAS BEEN REPRODUCED FROM THE ORDNANCE SURVEY BY PERMISSION OF ORDNANCE SURVEY OF THE CONTROLLER OF HER MAJESTY'S STATIONERY OFFICE. © CROWN COPYRIGHT AND DATABASE RIGHTS 2024 ORDNANCE SURVEY 0100031673.

01	17/4/2025	-	KH	TB	LD
Issue	Date	Remarks	Drawn	Checked	Approved

Title

Medium Potential EGL4_729

nationalgrid

Figure Number

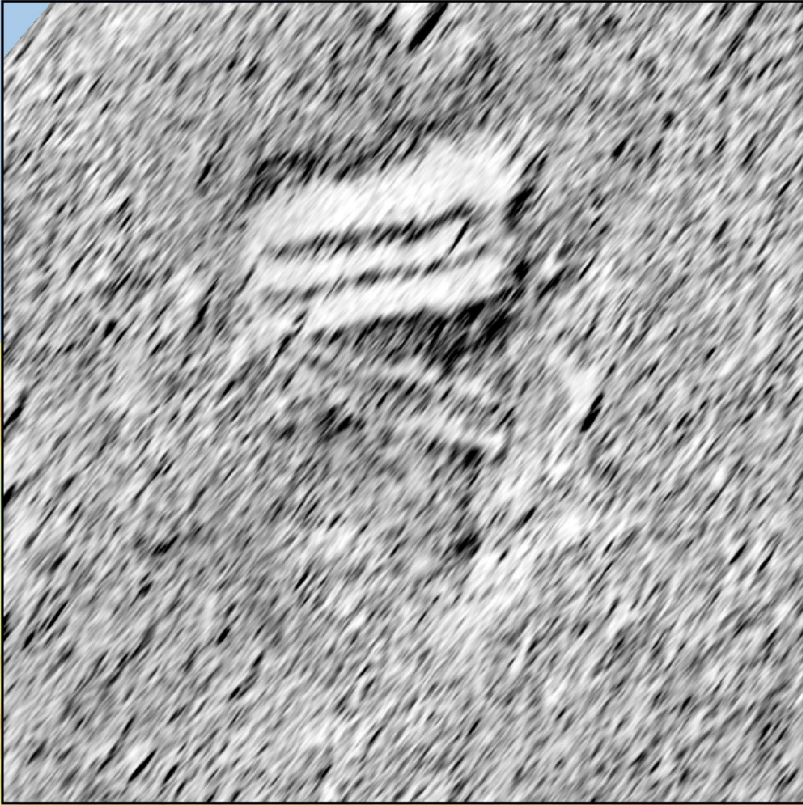
Figure 26_23

Drawing Reference

EGL-EXT-XX-XX-DL-X-023

Scale	Sheet Size	Sheet	Issue
1:255	A3	SHEET 1 OF 1	01

Service Layer Credits: World Ocean
Reference: Esri, Garmin,
geonames.org





Medium Potential EGL4_786

Legend

Archaeological Anomalies

Potential

● Medium

Multibeam Bathymetry

Depth (m LAT)

-17.64

-17.83

Notes

This drawing is scaled at paper size A3, therefore any prints taken at smaller sizes will affect accuracy of the measurement units and should not be scaled against.



Coordinate System: ETRS 1989 UTM Zone 30N

Sheet X Centroid Coordinate: 738101.05E Sheet Y Centroid Coordinate: 5945080.55N

0 4.5 9 18 Meters

BACKGROUND MAPPING INFORMATION HAS BEEN REPRODUCED FROM THE ORDNANCE SURVEY BY PERMISSION OF ORDNANCE SURVEY OF THE CONTROLLER OF HER MAJESTY'S STATIONERY OFFICE. © CROWN COPYRIGHT AND DATABASE RIGHTS 2024 ORDNANCE SURVEY 0100031673.

01	17/4/2025	-	KH	TB	LD
Issue	Date	Remarks	Drawn	Checked	Approved

Title

Medium Potential EGL4_786

nationalgrid

Figure Number

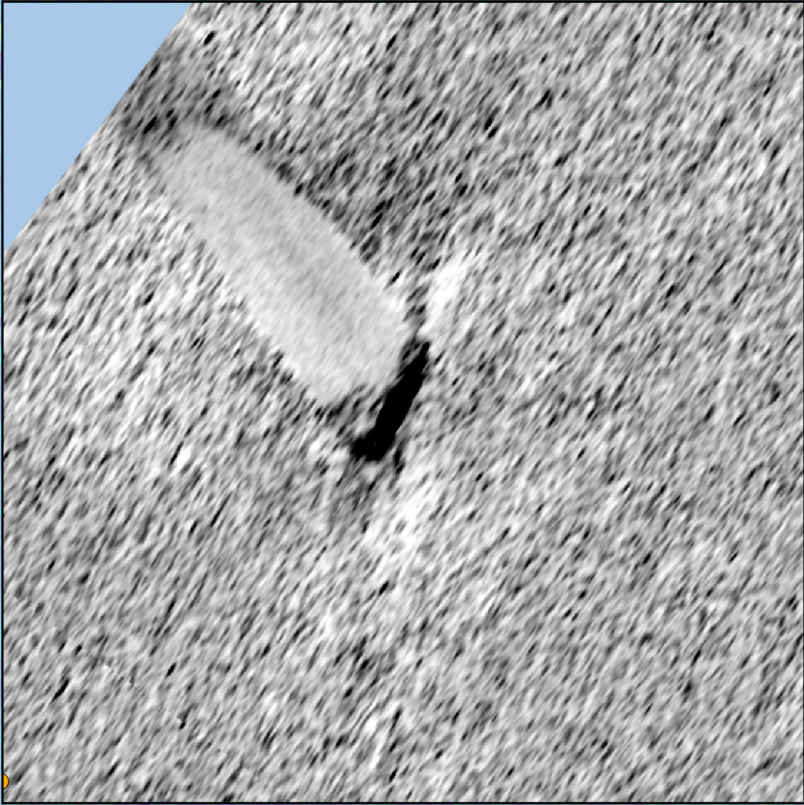
Figure 26_24

Drawing Reference

EGL-EXT-XX-XX-DL-X-024

Scale	Sheet Size	Sheet	Issue
1:398	A3	SHEET 1 OF 1	01

Service Layer Credits: World Ocean
Reference: Esri, Garmin,
geonames.org





Medium Potential EGL4_789

Legend

Archaeological Anomalies

Potential

● Medium

Multibeam Bathymetry

Depth (m LAT)

-18.52

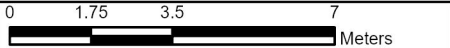
-18.92

Notes

This drawing is scaled at paper size A3, therefore any prints taken at smaller sizes will affect accuracy of the measurement units and should not be scaled against.



Coordinate System: ETRS 1989 UTM Zone 30N
Sheet X Centroid Coordinate: 739988.07E Sheet Y Centroid Coordinate: 5947505.18N



BACKGROUND MAPPING INFORMATION HAS BEEN REPRODUCED FROM THE ORDNANCE SURVEY BY PERMISSION OF ORDNANCE SURVEY OF THE CONTROLLER OF HER MAJESTY'S STATIONERY OFFICE. © CROWN COPYRIGHT AND DATABASE RIGHTS 2024 ORDNANCE SURVEY 0100031673.

01	17/4/2025	-	KH	TB	LD
Issue	Date	Remarks	Drawn	Checked	Approved

Title

Medium Potential EGL4_789

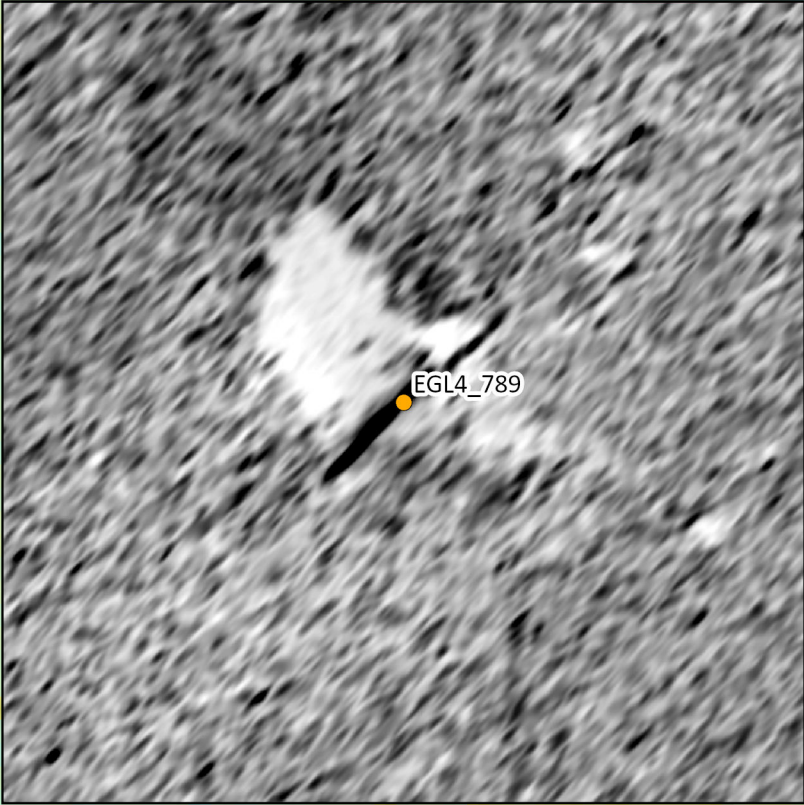
nationalgrid

Figure Number
Figure 26_25

Drawing Reference
EGL-EXT-XX-XX-DL-X-025

Scale	Sheet Size	Sheet	Issue
1:163	A3	SHEET 1 OF 1	01

Service Layer Credits: World Ocean
Reference: Esri, Garmin,
geonames.org





Medium Potential EGL4_790

Legend

Archaeological Anomalies

Potential

● Medium

Multibeam Bathymetry

Depth (m LAT)

-18.52

-18.92

Notes

This drawing is scaled at paper size A3, therefore any prints taken at smaller sizes will affect accuracy of the measurement units and should not be scaled against.



Coordinate System: ETRS 1989 UTM Zone 30N

Sheet X Centroid Coordinate: 739988.07E Sheet Y Centroid Coordinate: 5947505.18N

0 1.75 3.5 7 Meters

BACKGROUND MAPPING INFORMATION HAS BEEN REPRODUCED FROM THE ORDNANCE SURVEY BY PERMISSION OF ORDNANCE SURVEY OF THE CONTROLLER OF HER MAJESTY'S STATIONERY OFFICE. © CROWN COPYRIGHT AND DATABASE RIGHTS 2024 ORDNANCE SURVEY 0100031673.

01	17/4/2025	-	KH	TB	LD
Issue	Date	Remarks	Drawn	Checked	Approved

Title

Medium Potential EGL4_790

nationalgrid

Figure Number

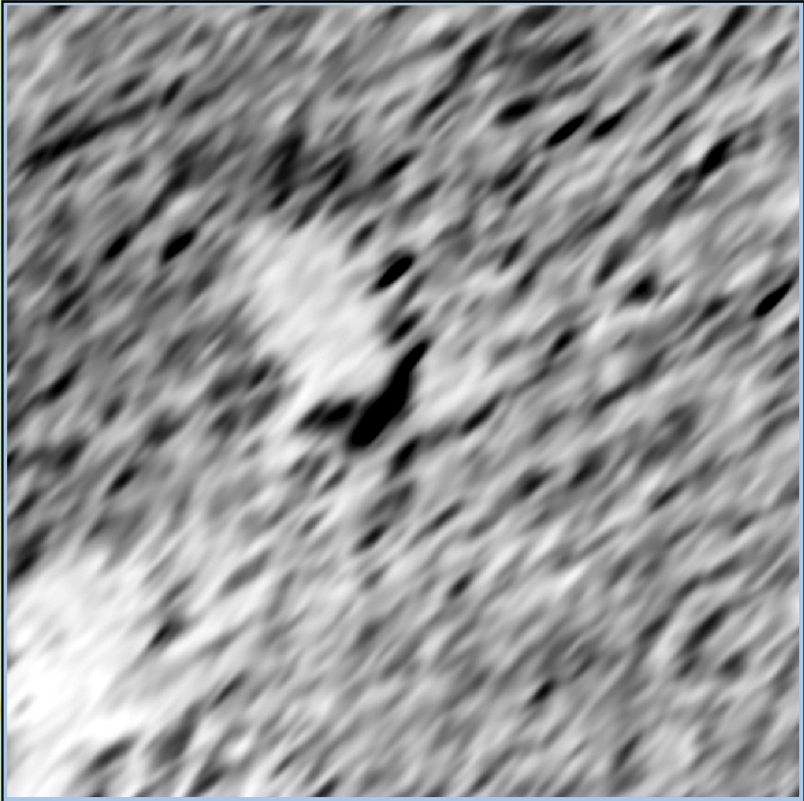
Figure 26_26

Drawing Reference

EGL-EXT-XX-XX-DL-X-026

Scale	Sheet Size	Sheet	Issue
1:163	A3	SHEET 1 OF 1	01

Service Layer Credits: World Ocean
Reference: Esri, Garmin,
geonames.org





Medium Potential EGL4_791

Legend

Archaeological Anomalies

Potential

● Medium

Multibeam Bathymetry

Depth (m LAT)

-18.52

-18.92

Notes

This drawing is scaled at paper size A3, therefore any prints taken at smaller sizes will affect accuracy of the measurement units and should not be scaled against.



Coordinate System: ETRS 1989 UTM Zone 30N

Sheet X Centroid Coordinate: 739988.07E Sheet Y Centroid Coordinate: 5947505.18N



BACKGROUND MAPPING INFORMATION HAS BEEN REPRODUCED FROM THE ORDNANCE SURVEY BY PERMISSION OF ORDNANCE SURVEY OF THE CONTROLLER OF HER MAJESTY'S STATIONERY OFFICE. © CROWN COPYRIGHT AND DATABASE RIGHTS 2024 ORDNANCE SURVEY 0100031673.

01	17/4/2025	-	KH	TB	LD
Issue	Date	Remarks	Drawn	Checked	Approved

Title

Medium Potential EGL4_791

nationalgrid

Figure Number

Figure 26_27

Drawing Reference

EGL-EXT-XX-XX-DL-X-027

Scale	Sheet Size	Sheet	Issue
1:163	A3	SHEET 1 OF 1	01

Service Layer Credits: World Ocean
Reference: Esri, Garmin,
geonames.org





Medium Potential EGL4_844

Legend

Archaeological Anomalies

Potential

● Medium

Multibeam Bathymetry

Depth (m LAT)

-25.97

-26.73

Notes

This drawing is scaled at paper size A3, therefore any prints taken at smaller sizes will affect accuracy of the measurement units and should not be scaled against.



Coordinate System: ETRS 1989 UTM Zone 30N

Sheet X Centroid Coordinate: 740874.34E Sheet Y Centroid Coordinate: 5949508.78N

0 2.75 5.5 11 Meters

BACKGROUND MAPPING INFORMATION HAS BEEN REPRODUCED FROM THE ORDNANCE SURVEY BY PERMISSION OF ORDNANCE SURVEY OF THE CONTROLLER OF HER MAJESTY'S STATIONERY OFFICE. © CROWN COPYRIGHT AND DATABASE RIGHTS 2024 ORDNANCE SURVEY 0100031673.

01	17/4/2025	-	KH	TB	LD
Issue	Date	Remarks	Drawn	Checked	Approved

Title

Medium Potential EGL4_844

nationalgrid

Figure Number

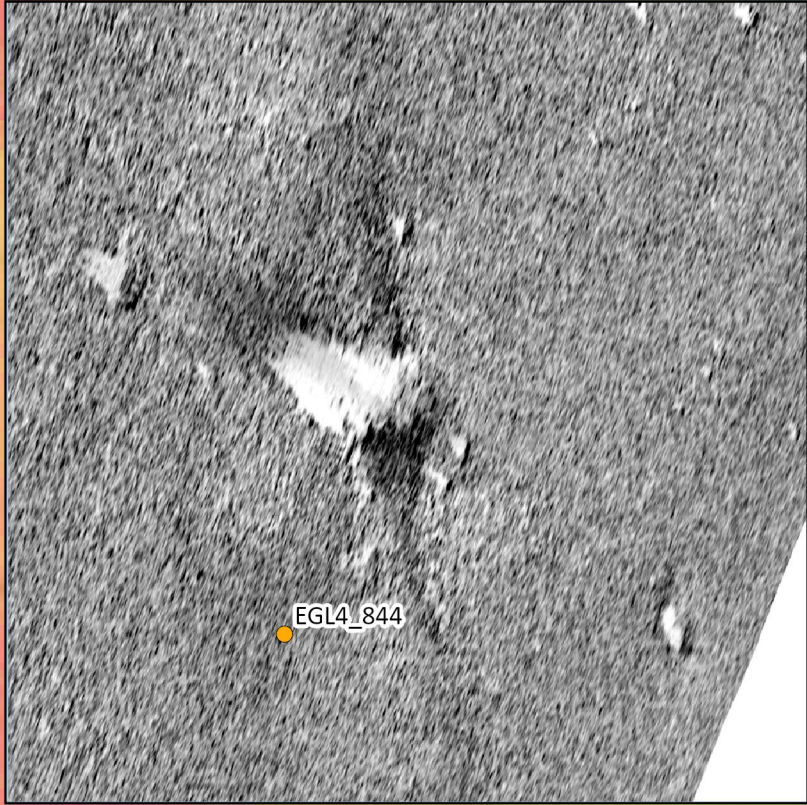
Figure 26_28

Drawing Reference

EGL-EXT-XX-XX-DL-X-028

Scale	Sheet Size	Sheet	Issue
1:255	A3	SHEET 1 OF 1	01

Service Layer Credits: World Ocean
Reference: Esri, Garmin,
geonames.org





Medium Potential EGL4_885

Legend

Archaeological Anomalies

Potential

● Medium

Multibeam Bathymetry

Depth (m LAT)

-19.55

-19.75

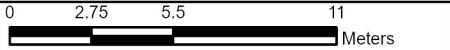
Notes

This drawing is scaled at paper size A3, therefore any prints taken at smaller sizes will affect accuracy of the measurement units and should not be scaled against.



Coordinate System: ETRS 1989 UTM Zone 30N

Sheet X Centroid Coordinate: 740192.82E Sheet Y Centroid Coordinate: 5948595.01N



BACKGROUND MAPPING INFORMATION HAS BEEN REPRODUCED FROM THE ORDNANCE SURVEY BY PERMISSION OF ORDNANCE SURVEY OF THE CONTROLLER OF HER MAJESTY'S STATIONERY OFFICE. © CROWN COPYRIGHT AND DATABASE RIGHTS 2024 ORDNANCE SURVEY 0100031673.

01	17/4/2025	-	KH	TB	LD
Issue	Date	Remarks	Drawn	Checked	Approved

Title

Medium Potential EGL4_885

nationalgrid

Figure Number

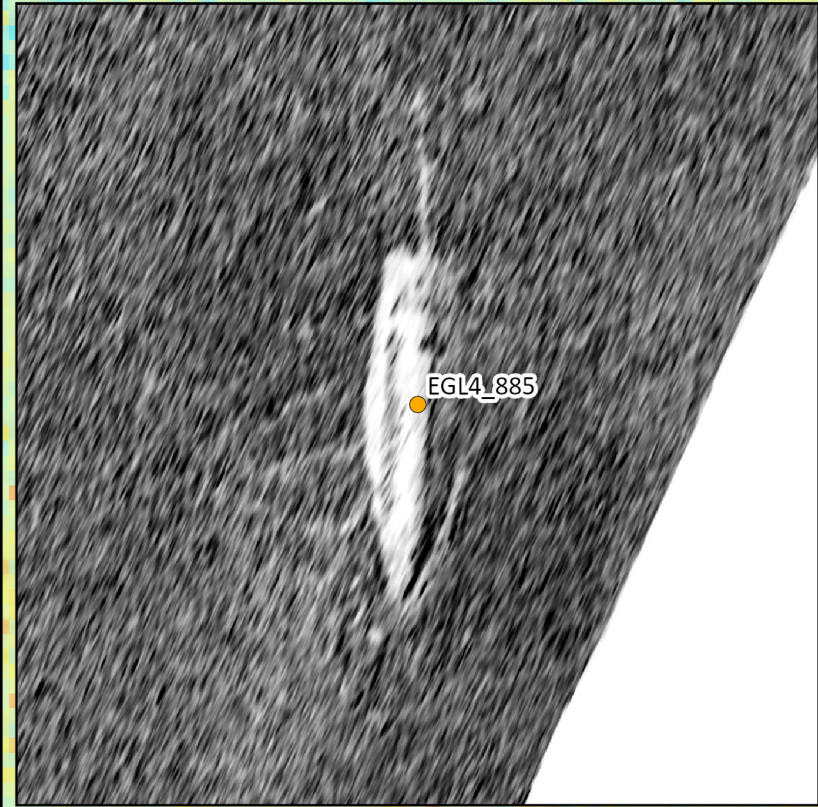
Figure 26_29

Drawing Reference

EGL-EXT-XX-XX-DL-X-029

Scale	Sheet Size	Sheet	Issue
1:255	A3	SHEET 1 OF 1	01

Service Layer Credits: World Ocean
Reference: Esri, Garmin,
geonames.org





Medium Potential EGL4_916

Legend

Archaeological Anomalies

Potential

● Medium

Multibeam Bathymetry

Depth (m LAT)

-29.91

-30.07

Notes

This drawing is scaled at paper size A3, therefore any prints taken at smaller sizes will affect accuracy of the measurement units and should not be scaled against.



Coordinate System: ETRS 1989 UTM Zone 30N

Sheet X Centroid Coordinate: 746331.48E Sheet Y Centroid Coordinate: 5963797.91N

0 3 6 12 Meters

BACKGROUND MAPPING INFORMATION HAS BEEN REPRODUCED FROM THE ORDNANCE SURVEY BY PERMISSION OF ORDNANCE SURVEY OF THE CONTROLLER OF HER MAJESTY'S STATIONERY OFFICE. © CROWN COPYRIGHT AND DATABASE RIGHTS 2024 ORDNANCE SURVEY 0100031673.

01	17/4/2025	-	KH	TB	LD
Issue	Date	Remarks	Drawn	Checked	Approved

Title

Medium Potential EGL4_916

nationalgrid

Figure Number

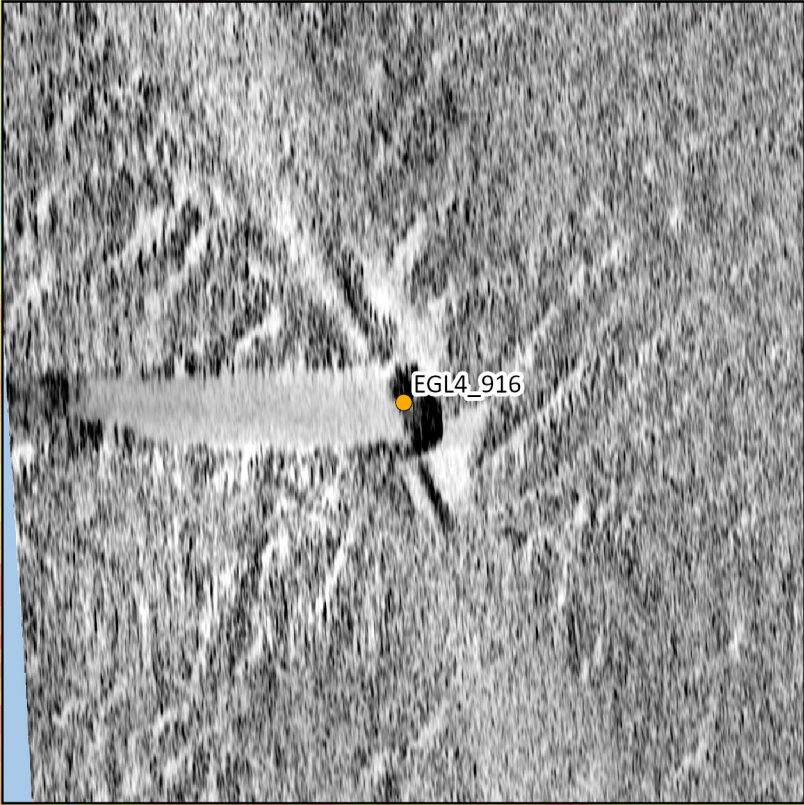
Figure 26_30

Drawing Reference

EGL-EXT-XX-XX-DL-X-030

Scale	Sheet Size	Sheet	Issue
1:267	A3	SHEET 1 OF 1	01

Service Layer Credits: World Ocean
Reference: Esri, Garmin,
geonames.org





Medium Potential EGL4_1263

Legend

Archaeological Anomalies

Potential

● Medium

Multibeam Bathymetry

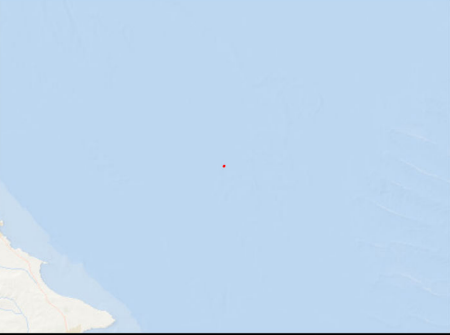
Depth (m LAT)

-59.65

-60.15

Notes

This drawing is scaled at paper size A3, therefore any prints taken at smaller sizes will affect accuracy of the measurement units and should not be scaled against.



Coordinate System: ETRS 1989 UTM Zone 30N
Sheet X Centroid Coordinate: 711651E Sheet Y Centroid Coordinate: 6029265.23N



BACKGROUND MAPPING INFORMATION HAS BEEN REPRODUCED FROM THE ORDNANCE SURVEY BY PERMISSION OF ORDNANCE SURVEY OF THE CONTROLLER OF HER MAJESTY'S STATIONERY OFFICE. © CROWN COPYRIGHT AND DATABASE RIGHTS 2024
ORDNANCE SURVEY 0100031673.

01	17/4/2025	-	KH	TB	LD
Issue	Date	Remarks	Drawn	Checked	Approved

Title

Medium Potential EGL4_1263

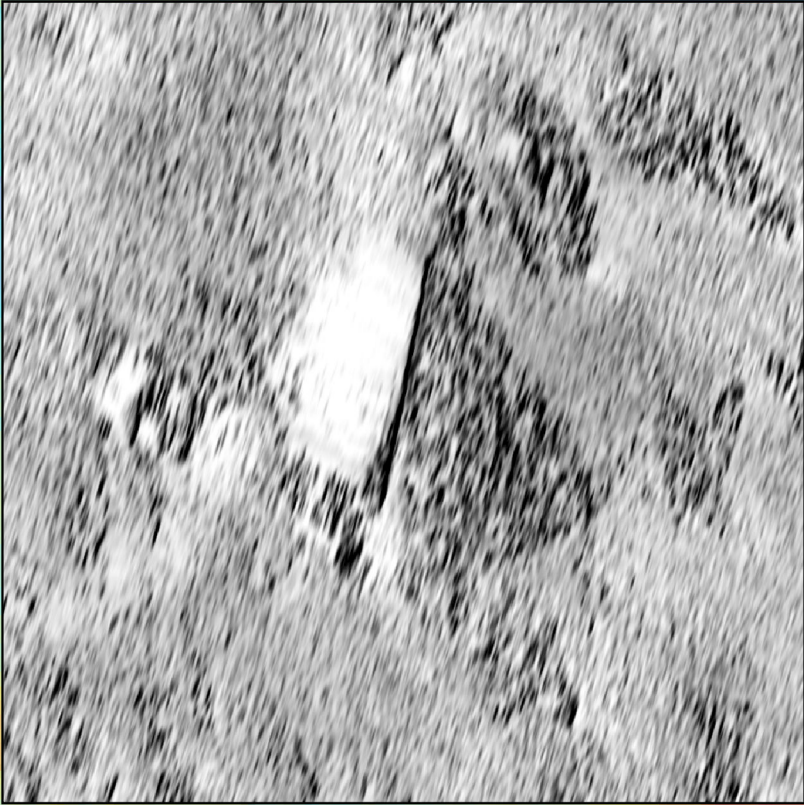
nationalgrid

Figure Number	Figure 26_31
---------------	--------------

Drawing Reference	EGL-EXT-XX-XX-DL-X-031
-------------------	------------------------

Scale	Sheet Size	Sheet	Issue
1:267	A3	SHEET 1 OF 1	01

Service Layer Credits: World Ocean
Reference: Esri, Garmin,
geonames.org





Medium Potential EGL4_1308

Legend

Archaeological Anomalies
Potential

● Medium

Multibeam Bathymetry

Depth (m LAT)

-66.7

-67.5

Notes

This drawing is scaled at paper size A3, therefore any prints taken at smaller sizes will affect accuracy of the measurement units and should not be scaled against.

Coordinate System: ETRS 1989 UTM Zone 30N

Sheet X Centroid Coordinate: 696590.49E Sheet Y Centroid Coordinate: 6074424.93N



BACKGROUND MAPPING INFORMATION HAS BEEN REPRODUCED FROM THE ORDNANCE SURVEY BY PERMISSION OF ORDNANCE SURVEY OF THE CONTROLLER OF HER MAJESTY'S STATIONERY OFFICE. © CROWN COPYRIGHT AND DATABASE RIGHTS 2024
ORDNANCE SURVEY 0100031673.

01	17/4/2025	-	KH	TB	LD
Issue	Date	Remarks	Drawn	Checked	Approved

Title

Medium Potential EGL4_1308

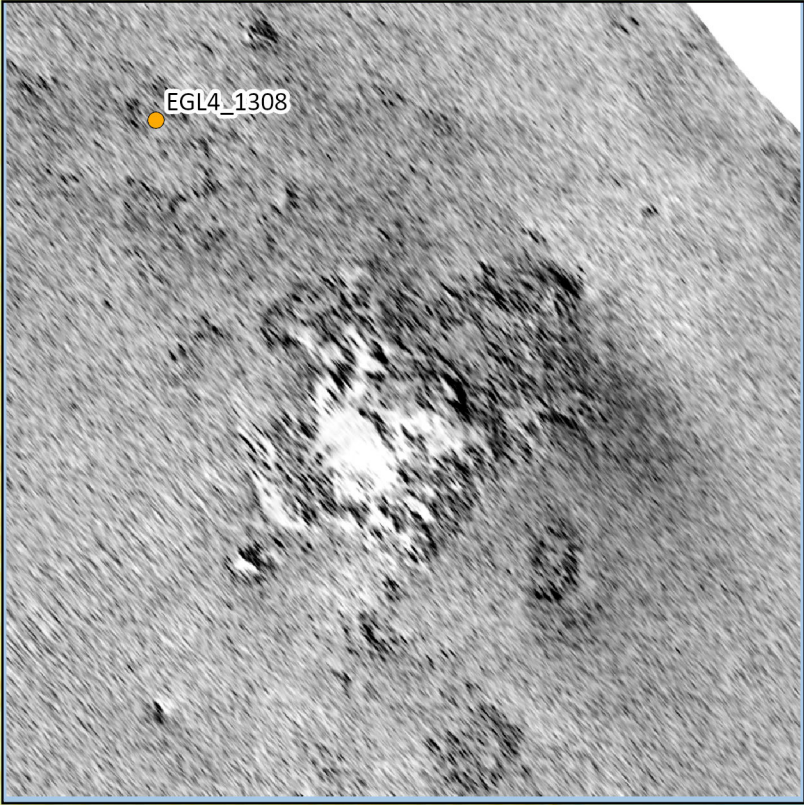
nationalgrid

Figure Number	Figure 26_32
---------------	--------------

Drawing Reference	EGL-EXT-XX-XX-DL-X-032
-------------------	------------------------

Scale	Sheet Size	Sheet	Issue
1:417	A3	SHEET 1 OF 1	01

Service Layer Credits: World Ocean
Reference: Esri, Garmin,
geonames.org





Medium Potential EGL4_1433

Legend

Archaeological Anomalies

Potential

● Medium

Multibeam Bathymetry

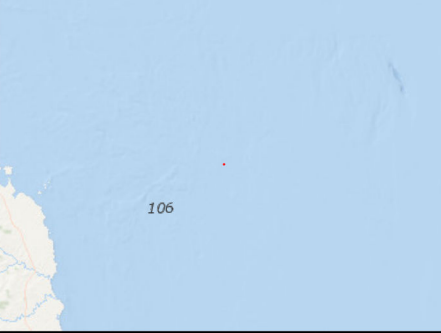
Depth (m LAT)

-83.06

-84.02

Notes

This drawing is scaled at paper size A3, therefore any prints taken at smaller sizes will affect accuracy of the measurement units and should not be scaled against.



Coordinate System: ETRS 1989 UTM Zone 30N

Sheet X Centroid Coordinate: 639016.32E Sheet Y Centroid Coordinate: 6172661.45N

0 2 4 8 Meters

BACKGROUND MAPPING INFORMATION HAS BEEN REPRODUCED FROM THE ORDNANCE SURVEY BY PERMISSION OF ORDNANCE SURVEY OF THE CONTROLLER OF HER MAJESTY'S STATIONERY OFFICE. © CROWN COPYRIGHT AND DATABASE RIGHTS 2024 ORDNANCE SURVEY 0100031673.

01	17/4/2025	-	KH	TB	LD
Issue	Date	Remarks	Drawn	Checked	Approved

Title

Medium Potential EGL4_1433

nationalgrid

Figure Number

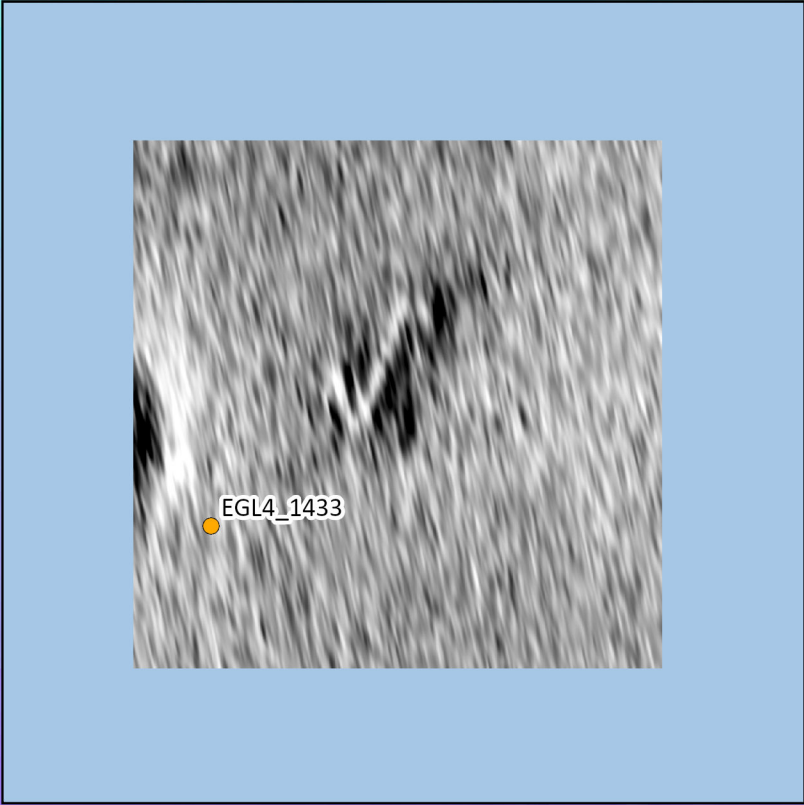
Figure 26_33

Drawing Reference

EGL-EXT-XX-XX-DL-X-033

Scale	Sheet Size	Sheet	Issue
1:171	A3	SHEET 1 OF 1	01

Service Layer Credits: World Ocean
Reference: Esri, Garmin,
geonames.org





High Potential EGL3_240

Legend

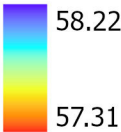
Archaeological Anomalies

Potential

- High
- Medium

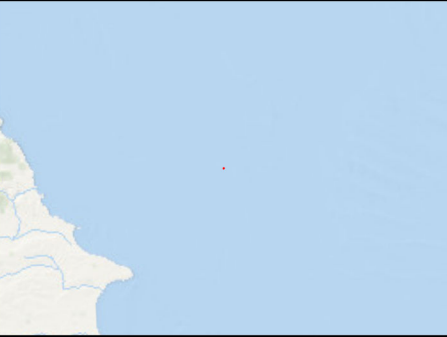
Multibeam Bathymetry

Depth (m LAT)

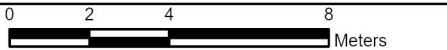


Notes

This drawing is scaled at paper size A3, therefore any prints taken at smaller sizes will affect accuracy of the measurement units and should not be scaled against.



Coordinate System: ETRS 1989 UTM Zone 30N
Sheet X Centroid Coordinate: 712137.51E Sheet Y Centroid Coordinate: 6024805N



BACKGROUND MAPPING INFORMATION HAS BEEN REPRODUCED FROM THE ORDNANCE SURVEY BY PERMISSION OF ORDNANCE SURVEY OF THE CONTROLLER OF HER MAJESTY'S STATIONERY OFFICE. © CROWN COPYRIGHT AND DATABASE RIGHTS 2024
ORDNANCE SURVEY 0100031673.

01	17/04/2025	-	KH	TB	LD
Issue	Date	Remarks	Drawn	Checked	Approved

Title

High Potential EGL3_240

nationalgrid

Figure Number

Figure 26_34

Drawing Reference

EGL-EXT-XX-XX-DL-X-034

Scale	Sheet Size	Sheet	Issue
1:189	A3	SHEET 1 OF 1	01

Service Layer Credits: World Ocean Reference: Esri, Garmin, geonames.org





High Potential EGL3_293

Legend

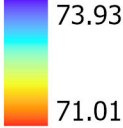
Archaeological Anomalies

Potential

- High
- Medium

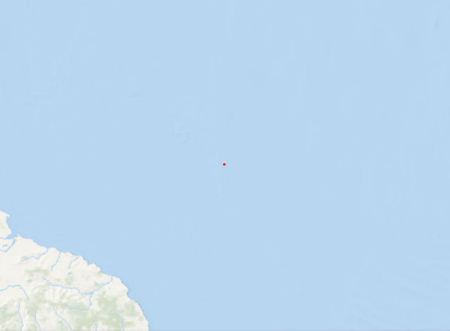
Multibeam Bathymetry

Depth (m LAT)



Notes

This drawing is scaled at paper size A3, therefore any prints taken at smaller sizes will affect accuracy of the measurement units and should not be scaled against.



Coordinate System: ETRS 1989 UTM Zone 30N

Sheet X Centroid Coordinate: 695588.52E Sheet Y Centroid Coordinate: 6081192.22N



BACKGROUND MAPPING INFORMATION HAS BEEN REPRODUCED FROM THE ORDNANCE SURVEY BY PERMISSION OF ORDNANCE SURVEY OF THE CONTROLLER OF HER MAJESTY'S STATIONERY OFFICE. © CROWN COPYRIGHT AND DATABASE RIGHTS 2024 ORDNANCE SURVEY 0100031673.

01	17/04/2025	-	KH	TB	LD
Issue	Date	Remarks	Drawn	Checked	Approved

Title

High Potential EGL3_293

nationalgrid

Figure Number

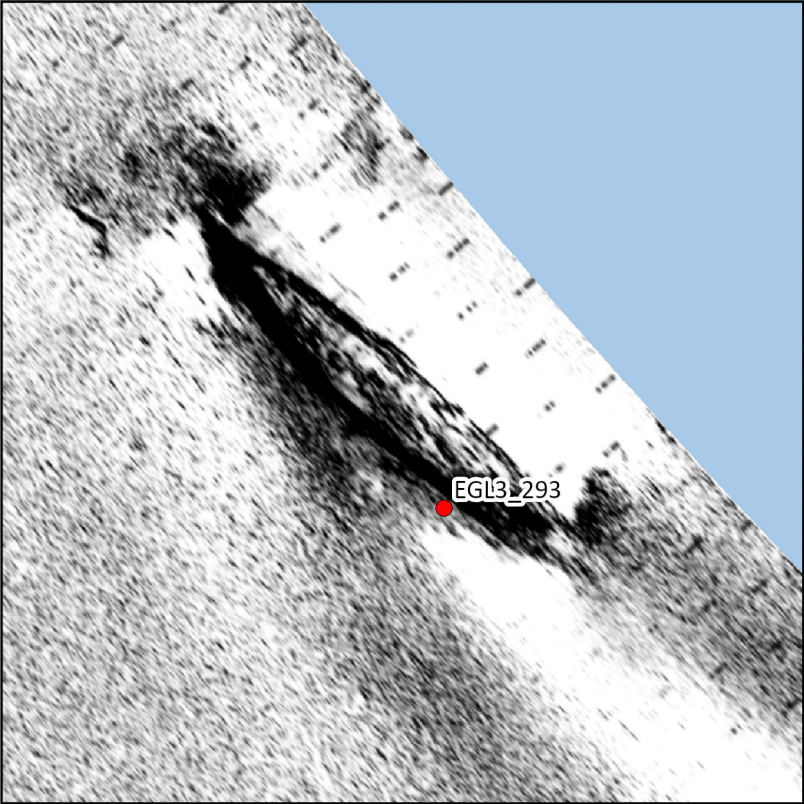
Figure 26_35

Drawing Reference

EGL-EXT-XX-XX-DL-X-035

Scale	Sheet Size	Sheet	Issue
1:463	A3	SHEET 1 OF 1	01

Service Layer Credits: World Ocean Reference: Esri, Garmin, geonames.org





High Potential EGL3_506

Legend

Archaeological Anomalies

Potential

● High

● Medium

Multibeam Bathymetry

Depth (m LAT)

5.71

5.02

Notes

This drawing is scaled at paper size A3, therefore any prints taken at smaller sizes will affect accuracy of the measurement units and should not be scaled against.



Coordinate System: ETRS 1989 UTM Zone 30N

Sheet X Centroid Coordinate: 722072.69E Sheet Y Centroid Coordinate: 5907686.45N

0 3.25 6.5 13
Meters

BACKGROUND MAPPING INFORMATION HAS BEEN REPRODUCED FROM THE ORDNANCE SURVEY BY PERMISSION OF ORDNANCE SURVEY OF THE CONTROLLER OF HER MAJESTY'S STATIONERY OFFICE. © CROWN COPYRIGHT AND DATABASE RIGHTS 2024 ORDNANCE SURVEY 0100031673.

01	17/04/2025	-	KH	TB	LD
Issue	Date	Remarks	Drawn	Checked	Approved

Title

High Potential EGL3_506

nationalgrid

Figure Number

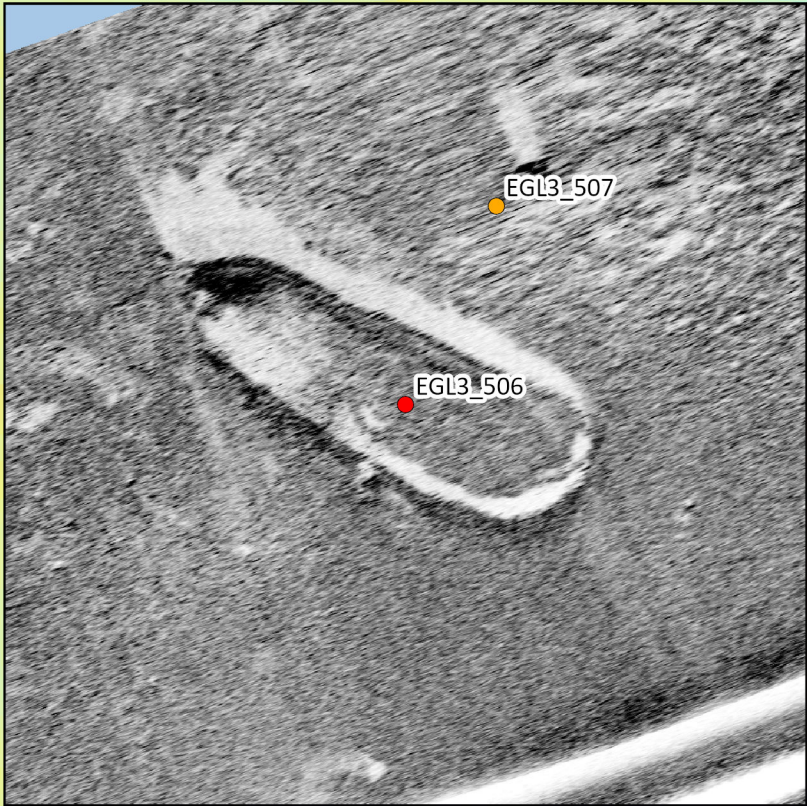
Figure 26_36

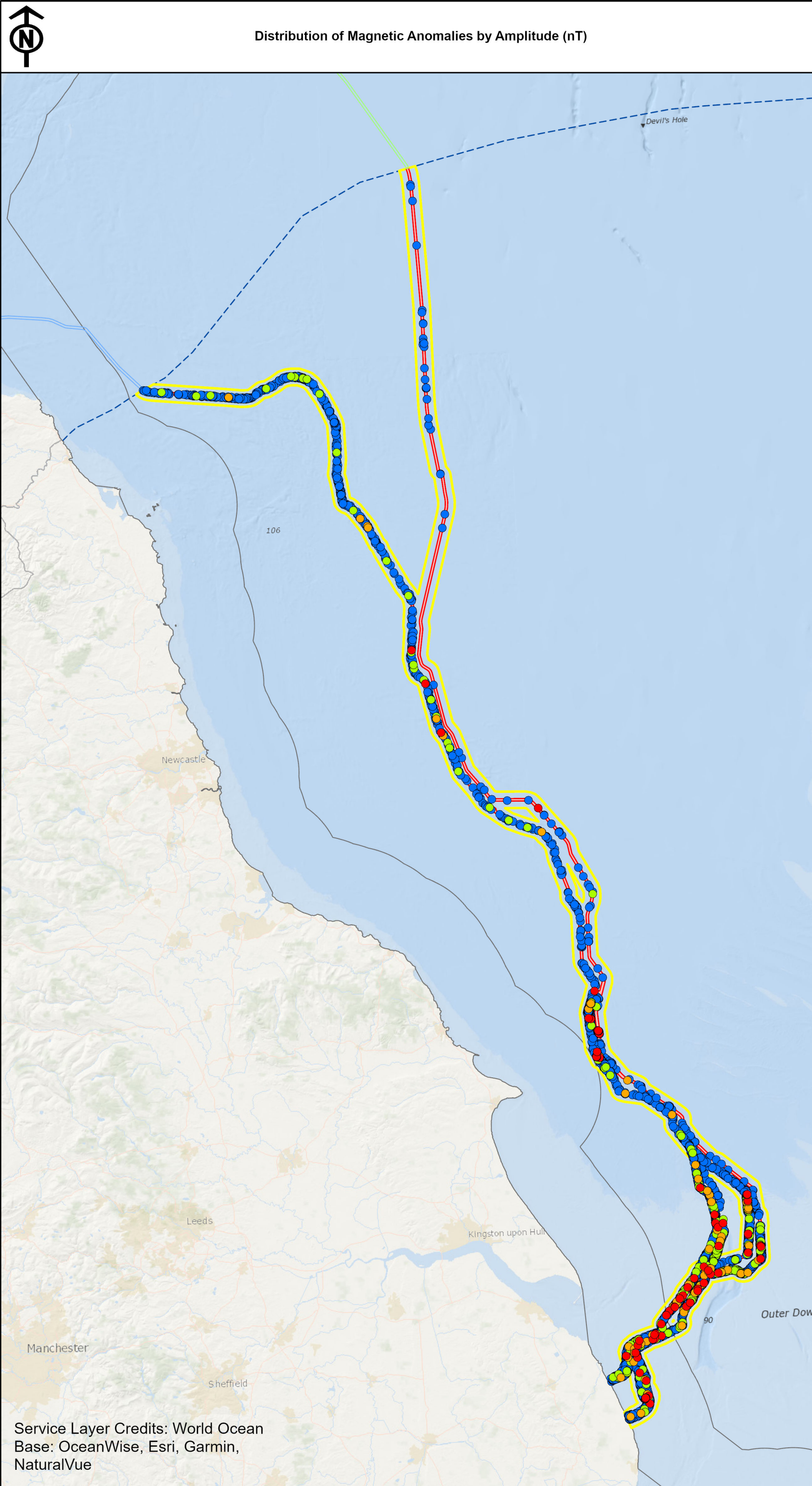
Drawing Reference

EGL-EXT-XX-XX-DL-X-036

Scale	Sheet Size	Sheet	Issue
1:296	A3	SHEET 1 OF 1	01

Service Layer Credits: World Ocean Base: OceanWise, Esri, Garmin,





Legend

English Offshore Scheme draft

Order Limits

EGL 4 Scottish Waters

EGL 3 Scottish Waters

Study Area

12 NM Limit

Scottish Adjacent Waters

Magnetic Anomalies

Amplitude (nT)

5 to 50

50 to 100

100 to 200

200+

Notes

This drawing is scaled at paper size A3, therefore any prints taken at smaller sizes will affect accuracy of the measurement units and should not be scaled against.

Coordinate System: ETRS 1989 UTM Zone 30N
Sheet X Centroid Coordinate: 658341.4E Sheet Y Centroid Coordinate: 6089131.15N

0102040

Kilometers

BACKGROUND MAPPING INFORMATION HAS BEEN REPRODUCED FROM THE ORDNANCE SURVEY BY PERMISSION OF ORDNANCE SURVEY OF THE CONTROLLER OF HER MAJESTY'S STATIONERY OFFICE. © CROWN COPYRIGHT AND DATABASE RIGHTS 2024
ORDNANCE SURVEY 0100031673.

01	17/04/2025	-	KH	TB	LD
Issue	Date	Remarks	Drawn	Checked	Approved

Title

Distribution of Magnetic Anomalies by Amplitude (nT)

nationalgrid

Figure Number

Figure 26_37

Drawing Reference

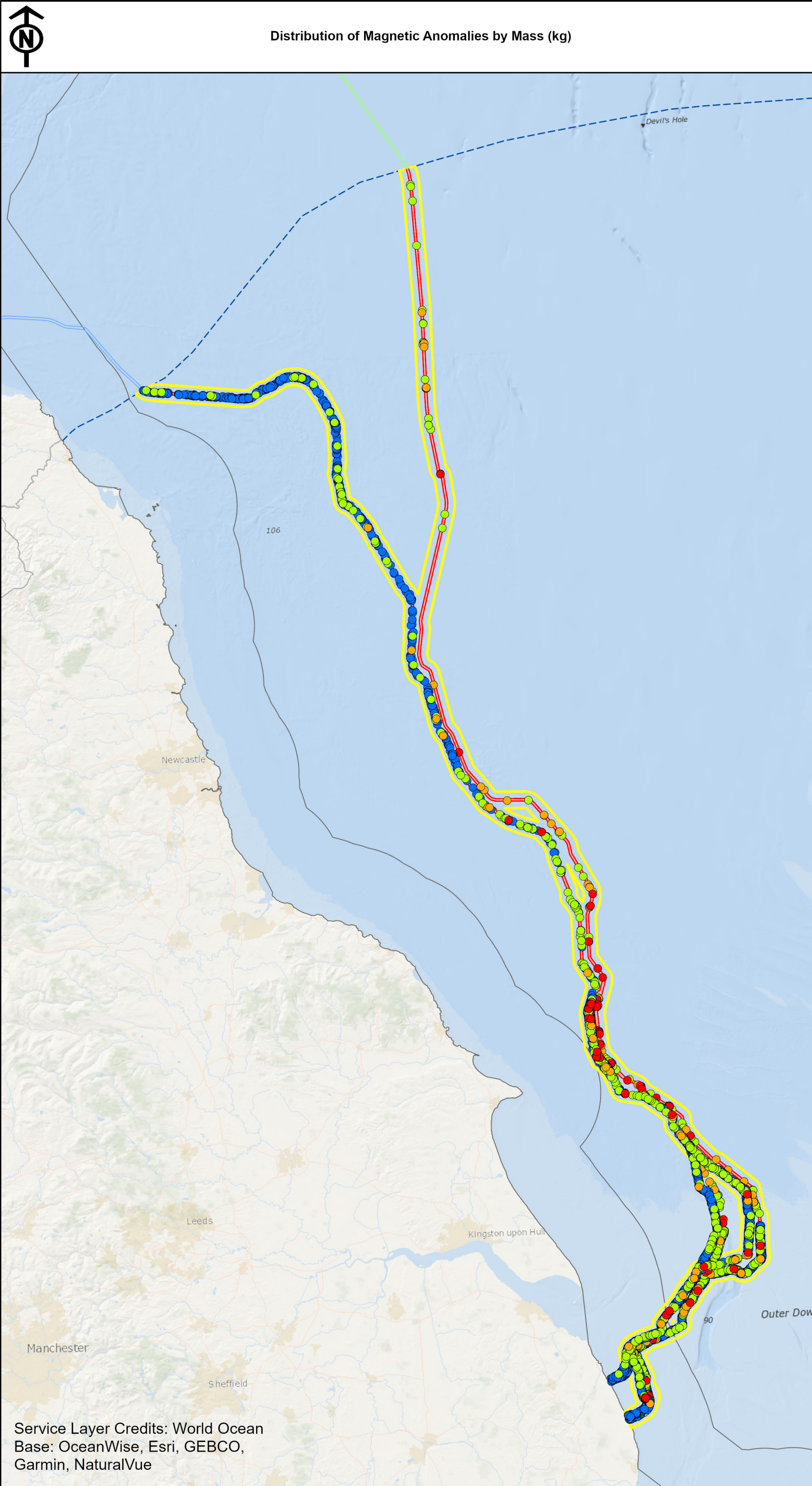
EGL-EXT-XX-XX-DL-X-037

Scale	Sheet Size	Sheet	Issue
1:1,051,042	A3	SHEET 1 OF 1	01

Service Layer Credits: World Ocean

Base: OceanWise, Esri, Garmin,

NaturalVue



Legend

English Offshore Scheme draft

Order Limits

EGL 4 Scottish Waters

EGL 3 Scottish Waters

Study Area

12 NM Limit

Scottish Adjacent Waters

Magnetic Anomalies

Mass (kg)

0 to 500

100 to 500

500 to 1000

1000+

Notes

This drawing is scaled at paper size A3, therefore any prints taken at smaller sizes will affect accuracy of the measurement units and should not be scaled against.

Coordinate System: ETRS 1989 UTM Zone 30N
Sheet X Centroid Coordinate: 658341.4E Sheet Y Centroid Coordinate: 6089131.15N

0102040

Kilometers

BACKGROUND MAPPING INFORMATION HAS BEEN REPRODUCED FROM THE ORDNANCE SURVEY BY PERMISSION OF ORDNANCE SURVEY OF THE CONTROLLER OF HER MAJESTY'S STATIONERY OFFICE. © CROWN COPYRIGHT AND DATABASE RIGHTS 2024 ORDNANCE SURVEY 0100031673.

01	17/04/2025	-	KH	TB	LD
Issue	Date	Remarks	Drawn	Checked	Approved

Title

Distribution of Magnetic Anomalies by Mass (kg)

nationalgrid

Figure Number

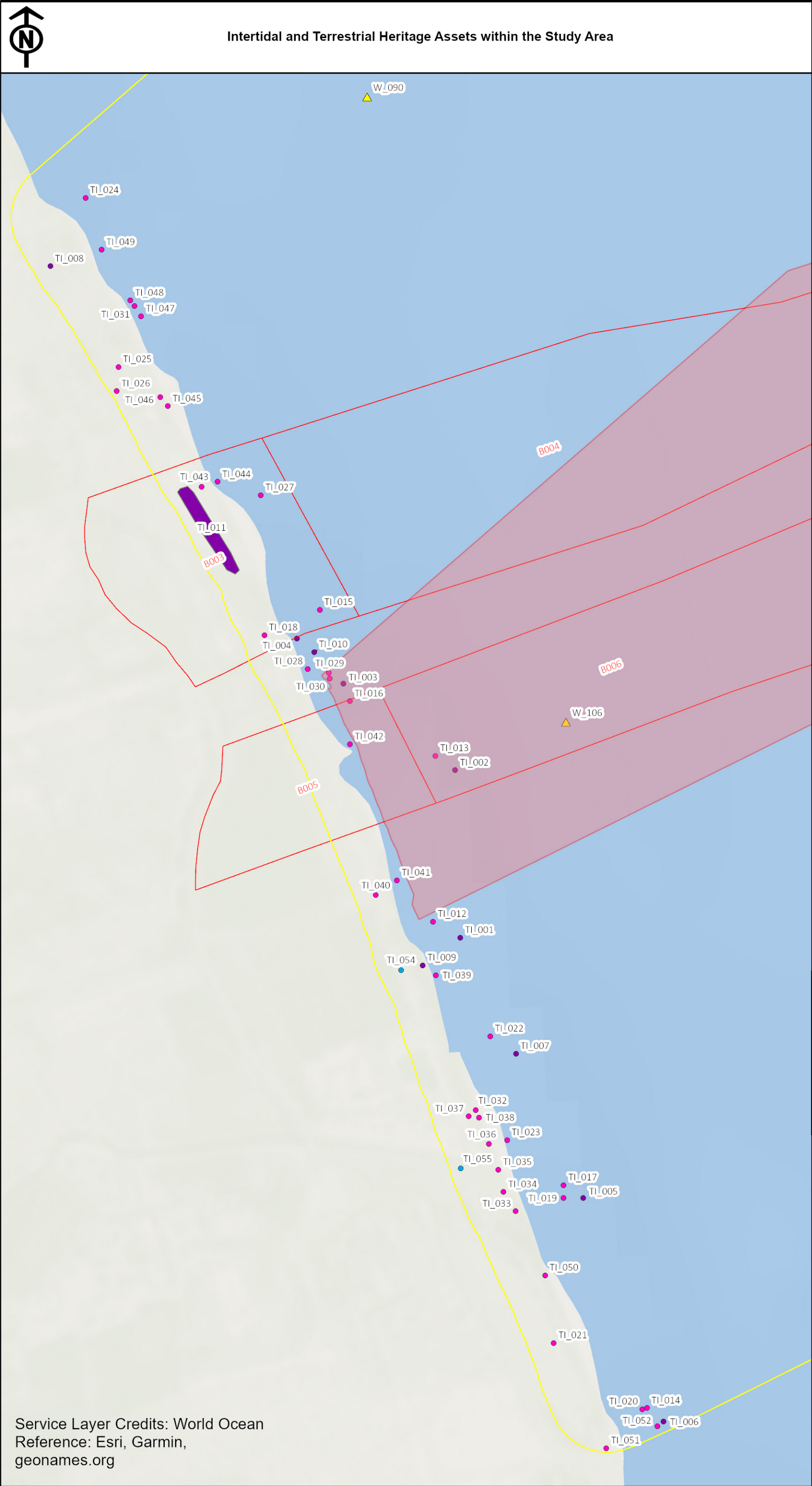
Figure 26_38

Drawing Reference

EGL-EXT-XX-XX-DL-X-038

Scale	Sheet Size	Sheet	Issue
1:1,051,042	A3	SHEET 1 OF 1	01

Service Layer Credits: World Ocean
Base: OceanWise, Esri, GEBCO,
Garmin, NaturalVue



Legend

- English Offshore Scheme draft Order Limits
- Study Area
- EGL 3 Block
- UKHO record
- CITIZAN record
- NRHE record
- HER Monument (point)
- HER Monument (polygon)

Notes

This drawing is scaled at paper size A3, therefore any prints taken at smaller sizes will affect accuracy of the measurement units and should not be scaled against.

Coordinate System: ETRS 1989 UTM Zone 30
Sheet X Centroid Coordinate: 721509.74E Sheet Y Centroid Coordinate: 5907496.74N

0 0.13 0.25 0.5 Kilometers

BACKGROUND MAPPING INFORMATION HAS BEEN REPRODUCED FROM THE ORDINANCE SURVEY BY PERMISSION OF ORDINANCE SURVEY OF THE CONTROLLER OF HER MAJESTY'S STATIONERY OFFICE. © CROWN COPYRIGHT AND DATABASE RIGHTS 2024 ORDINANCE SURVEY 0100031673.

01	17/04/2025	-	TB	KH	LD
Issue	Date	Remarks	Drawn	Checked	Approved

Title

Intertidal and Terrestrial Heritage Assets within the Study Area

nationalgrid

Figure Number

Figure 26_39

Drawing Reference

EGL-EXT-XX-XX-DL-X-039

Scale	Sheet Size	Sheet	Issue
1:13,000	A3	SHEET 1 OF 1	01

Service Layer Credits: World Ocean
Reference: Esri, Garmin,
geonames.org

COPYRIGHT: NOT TO BE REPRODUCED WITHOUT THE WRITTEN PERMISSION OF NATIONAL GRID ELECTRICITY TRANSMISSION PIC