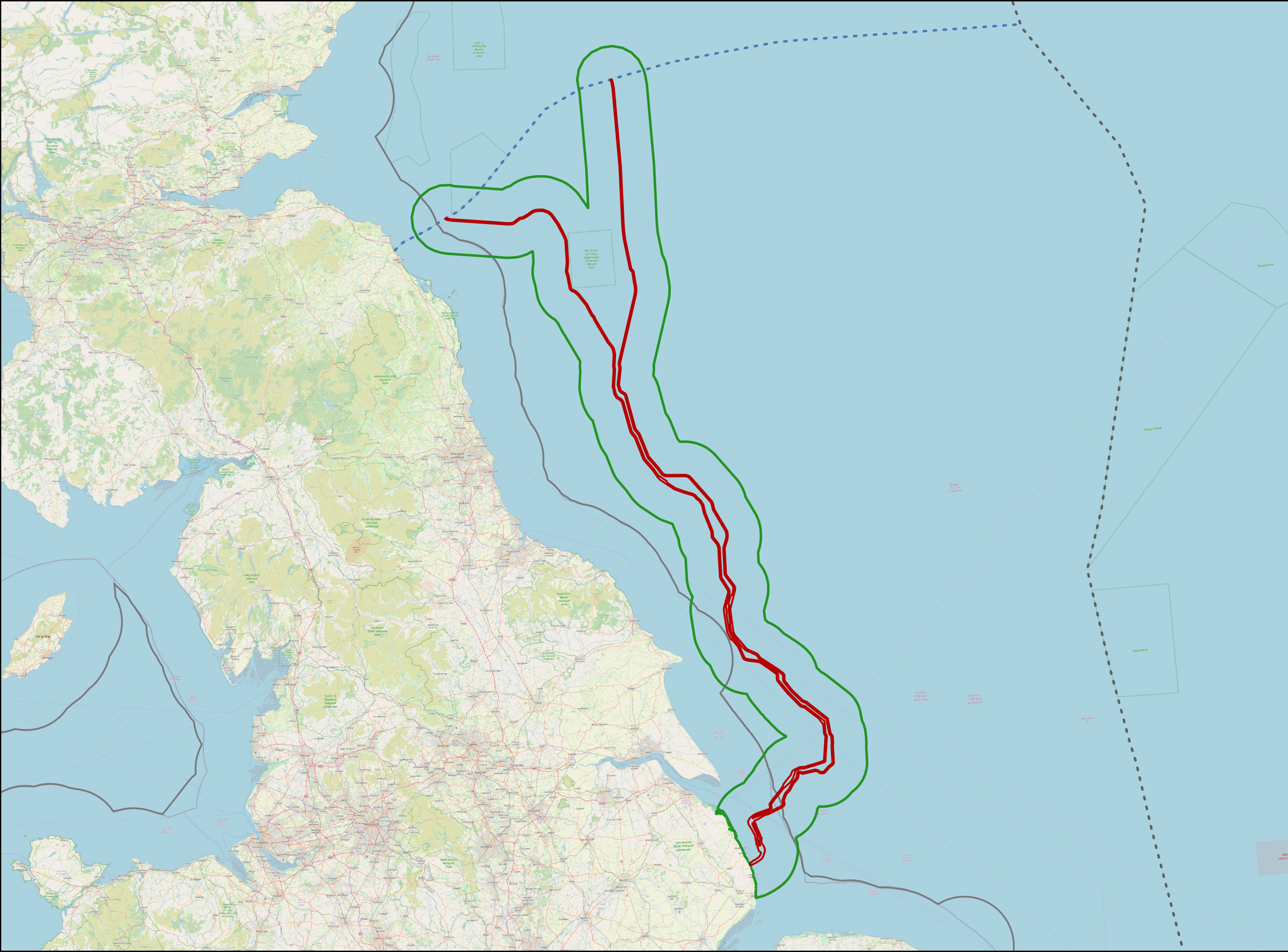




Fish and Shellfish Study Area

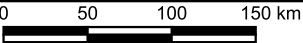


- Legend**
- English Offshore Draft Order Limits
 - Study Area (15km Buffer)
 - 12NM Limit
 - Scottish Adjacent Waters
 - EEZ

Notes
This drawing is scaled at paper size A3, therefore any prints taken at smaller sizes will affect accuracy of the measurement units and should not be scaled against.



Centroid
Coordinate X: 673674.4006161599
Coordinate Y: 6083373.606036227



Copyright: © OpenStreetMap contributors; Copyright 1995–2024 Esri. All rights reserved. Published in the United States of America. The information contained in this work is the exclusive property of Environmental Systems Research Institute, Inc. UKHO Contains public sector information licensed under the Open Government Licence v3.0. Contains OS data © Crown copyright and database right 2025. RLB Revision 2 used. Not to be used for navigation. Data correct at time of export.

| | | | | | |
|-------|------------|---------|-------|---------|----------|
| | | | | | |
| v01 | 03/04/2025 | - | JC | AN | DS |
| Issue | Date | Remarks | Drawn | Checked | Approved |

Title

Fish and Shellfish Study Area

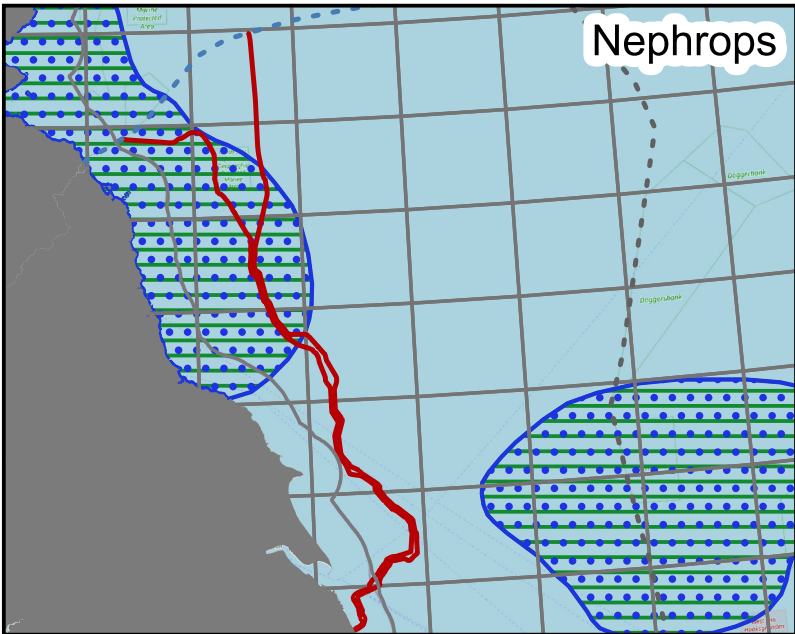
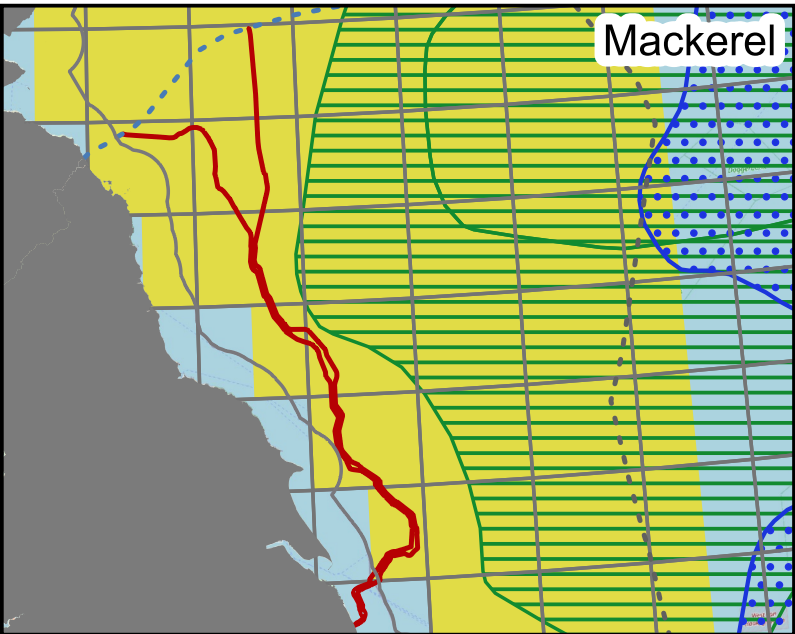
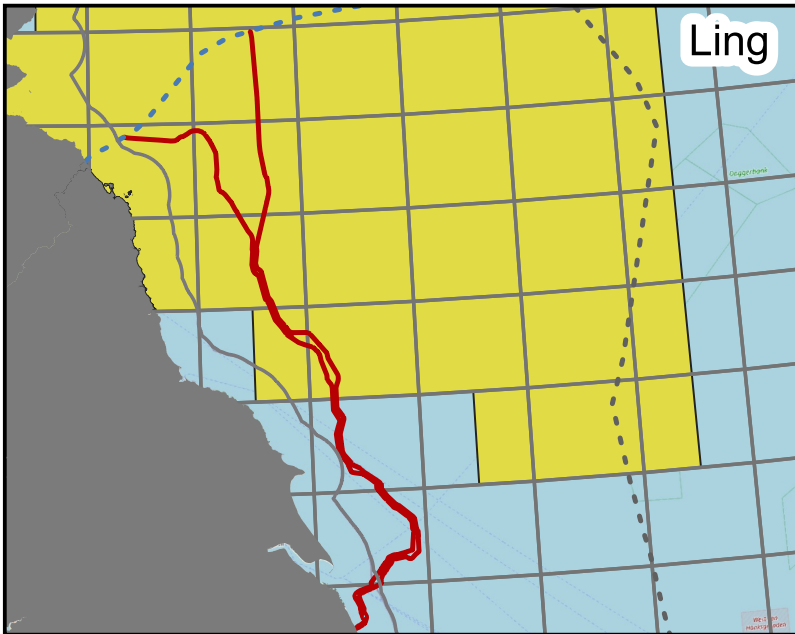
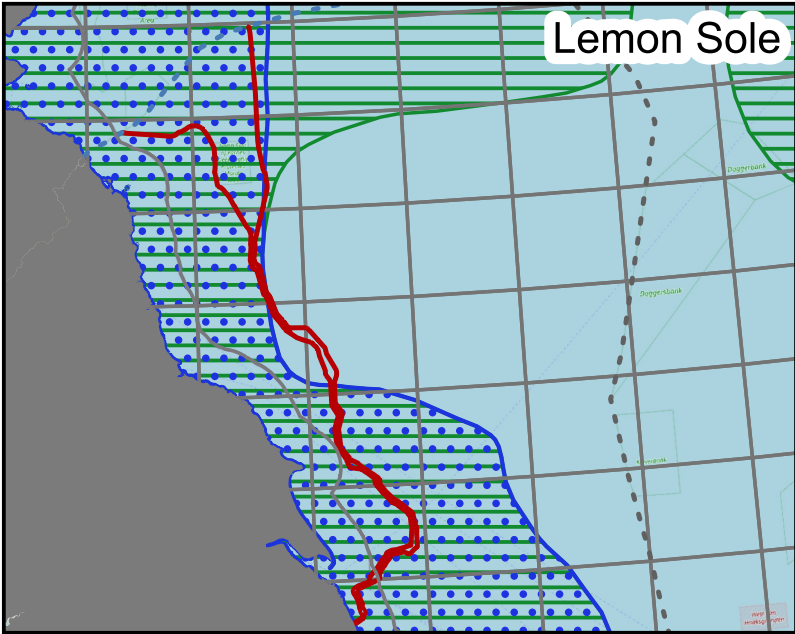
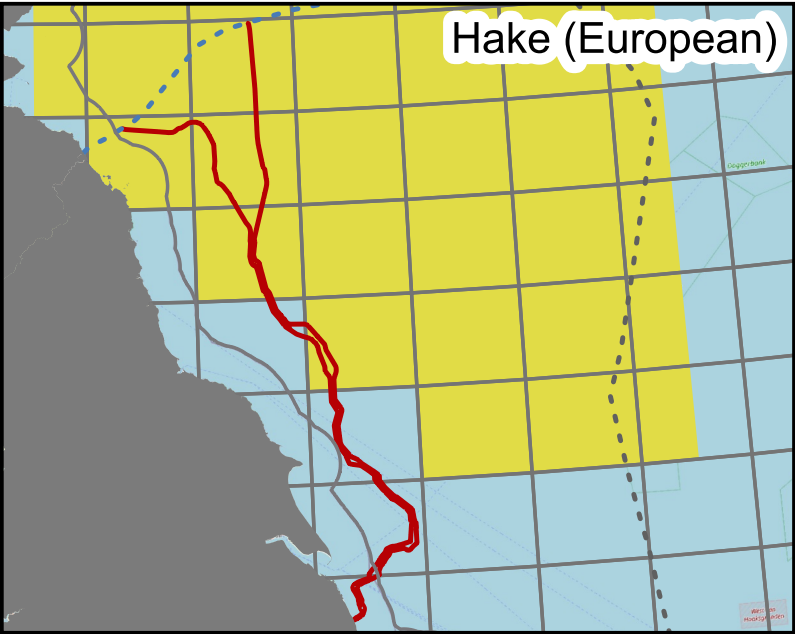
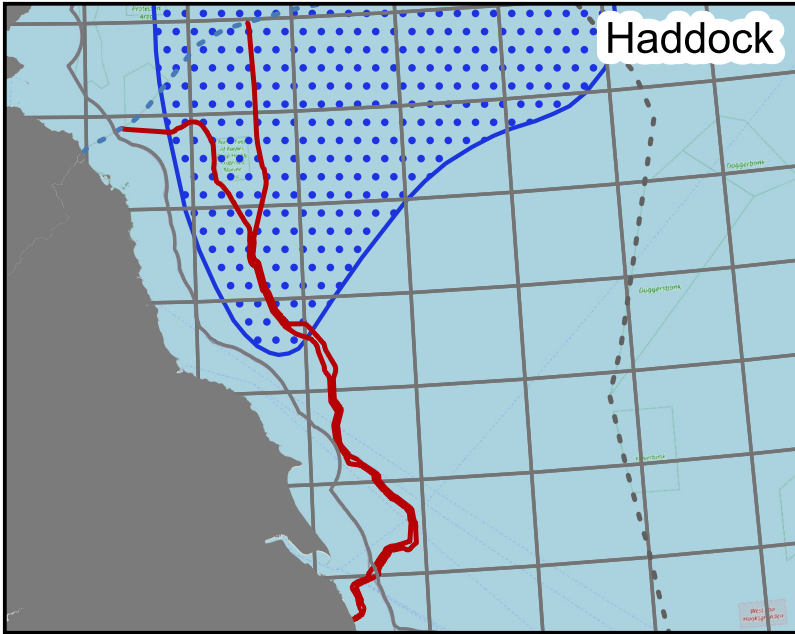
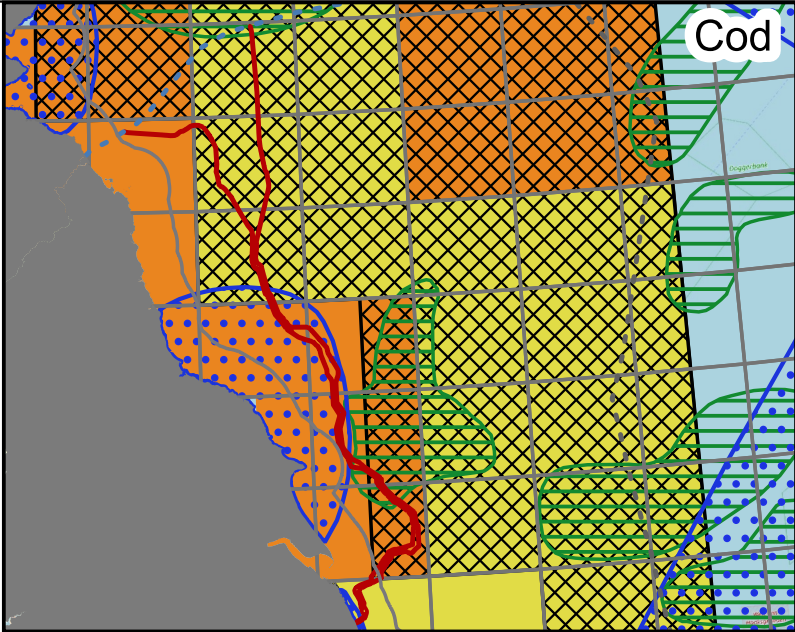
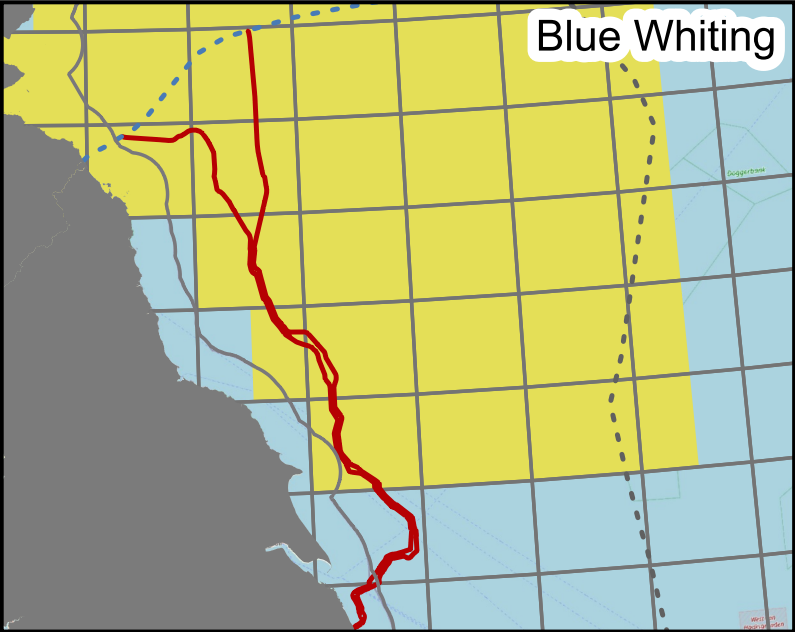
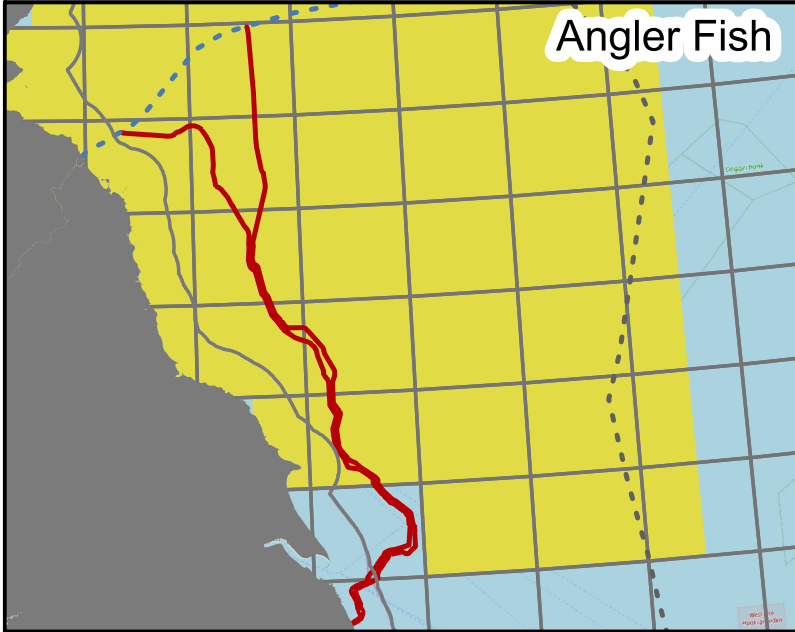
nationalgrid



| | | | | | |
|--------------------------|-------------------|--------------------------|--------------|--|--|
| Figure Number | | Figure 20-1 | | | |
| Drawing Reference | | C01494-EGL3&4-FISH-014-B | | | |
| Scale | Sheet Size | Sheet | Issue | | |
| 1:1,700,000 | A3 | SHEET 1 OF 1 | 01 | | |



Fish Nursery And Spawning Grounds Intensity Within The Study Area (Part 1)



Legend

English Offshore Draft Order Limits

ICES Statistical Rectangle

Spawning and Nursery Ground (Coull et al, 1998)

Spawning

Nursery

Spawning Ground with Intensity (Ellis et al, 2012)

High

Low

Nursery Ground with Intensity (Ellis et al, 2012)

High

Low

12NM Limit

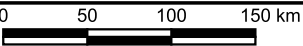
Scottish Adjacent Waters

EEZ

Notes
This drawing is scaled at paper size A3, therefore any prints taken at smaller sizes will affect accuracy of the measurement units and should not be scaled against.



Centroid
Coordinate X: 750401.9377016701
Coordinate Y: 6089864.598862838



Copyright: © OpenStreetMap contributors; Copyright 1995–2024 Esri. All rights reserved. Published in the United States of America. The information contained in this work is the exclusive property of Environmental Systems Research Institute, Inc. UKHO / CEPAS - Spawning and Nursery Grounds Layers for Selected Fish in UK Waters in 2010 / 2012 / 1998 by Coull et al & Ellis et al (2012) - Contains public sector information licensed under the Open Government Licence v3.0. ICES - Statistical Rectangles, 2022 - All public data are under the Creative Commons (CC by 4.0) licence. RLB Revision 2 used. Not to be used for navigation. Data correct at time of export.

| | | | | | |
|-------|------------|---------|-------|---------|----------|
| v01 | 23/04/2025 | - | JC | AN | DS |
| Issue | Date | Remarks | Drawn | Checked | Approved |

Title

Fish Nursery And Spawning Grounds Intensity Within The Study Area (Part 1)

nationalgrid 

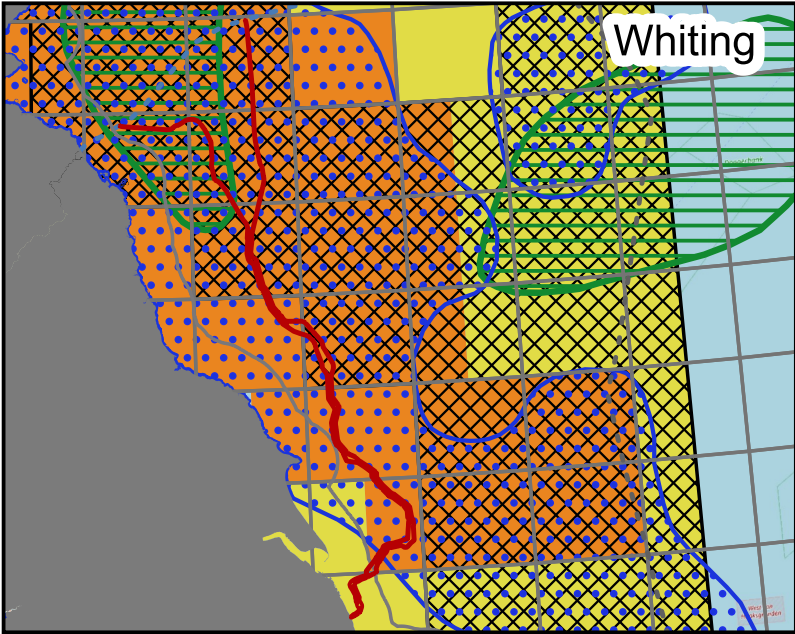
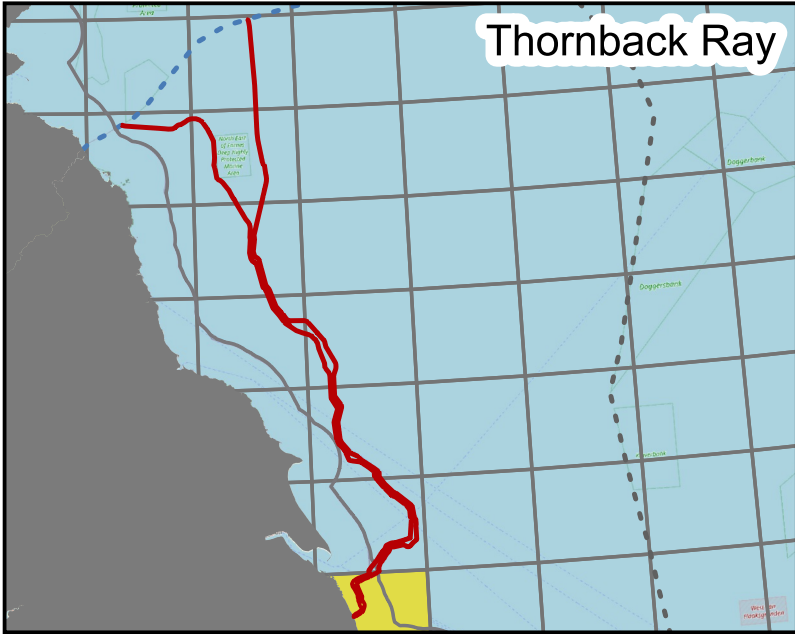
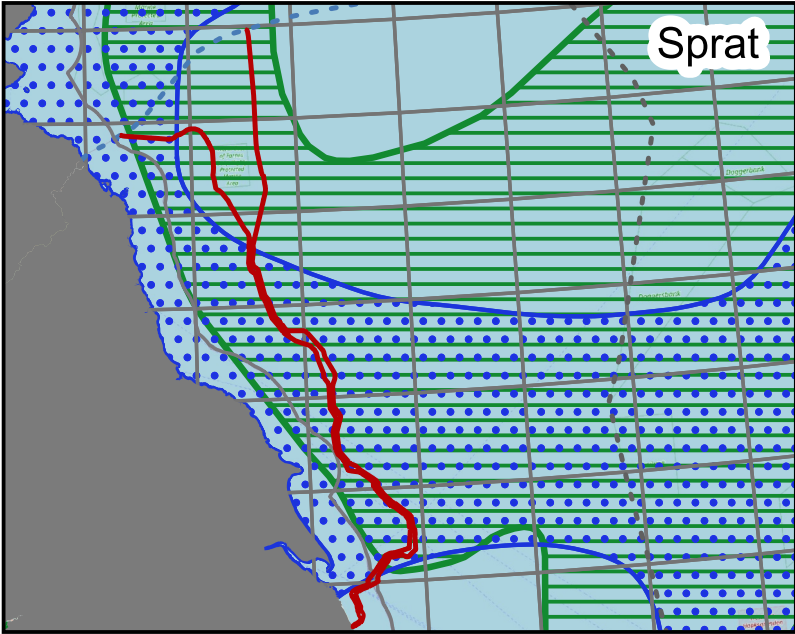
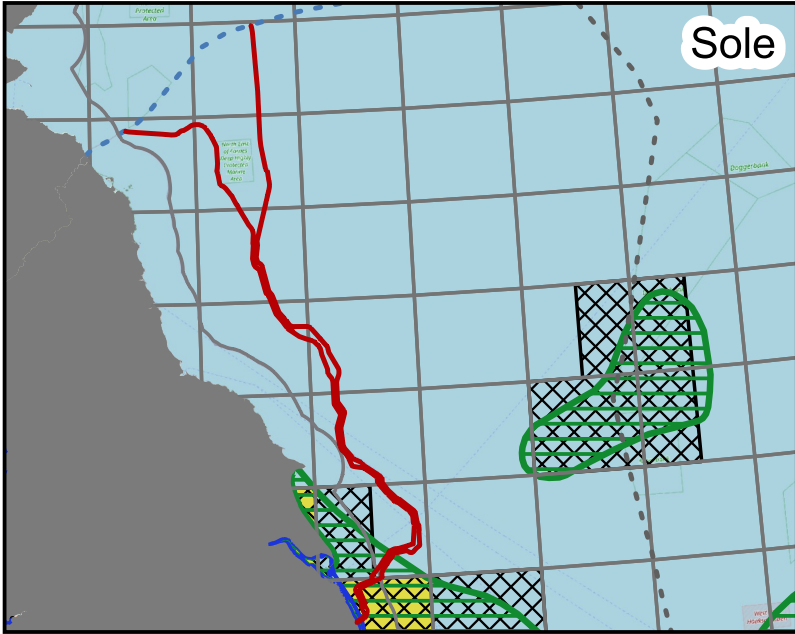
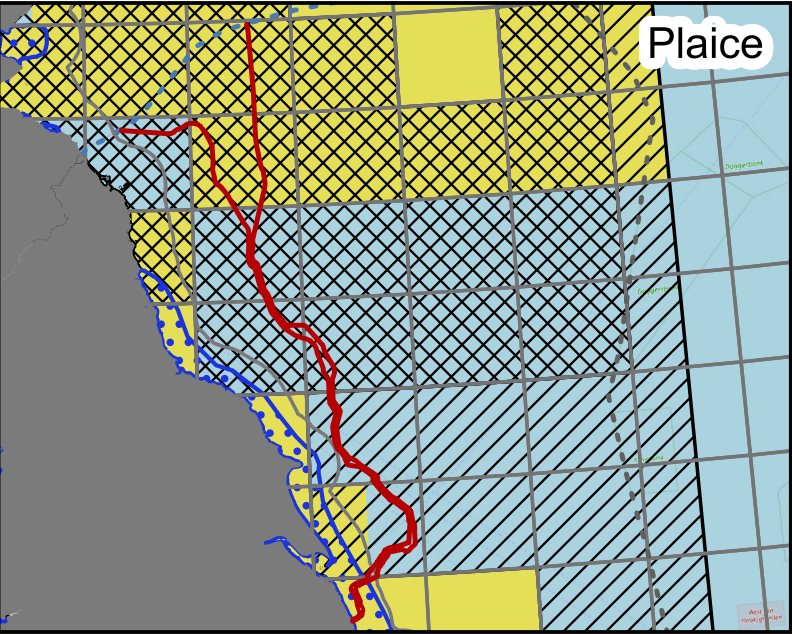
Figure Number: Figure 20-2

Drawing Reference: C01494-EGL3&4-FISH-018-B

| | | | |
|-------------|------------|--------------|-------|
| Scale | Sheet Size | Sheet | Issue |
| 1:4,500,000 | A3 | SHEET 1 OF 1 | 01 |



Fish Nursery And Spawning Grounds Intensity Within The Study Area (Part 2)



Legend

- English Offshore Draft Order Limits
- ICES Statistical Rectangle
- Spawning and Nursery Ground (Coull et al, 1998)**
- Spawning
- Nursery
- Spawning Ground with Intensity (Ellis et al, 2012)**
- High
- Low
- Nursery Ground with Intensity (Ellis et al, 2012)**
- High
- Low
- 12NM Limit
- Scottish Adjacent Waters
- EEZ

Notes

This drawing is scaled at paper size A3, therefore any prints taken at smaller sizes will affect accuracy of the measurement units and should not be scaled against.



Centroid
Coordinate X: 750477.7903084981
Coordinate Y: 6085508.223913627



Copyright: © OpenStreetMap contributors; Copyright 1995–2024 Esri. All rights reserved. Published in the United States of America. The information contained in this work is the exclusive property of Environmental Systems Research Institute, Inc. UKHO / CEFAS - Spawning and Nursery Grounds Layers for Selected Fish in UK Waters in 2010 / 2012 / 1988 by Coull et al & Ellis et al (2012) - Contains public sector information licensed under the Open Government Licence v3.0. ICES - Statistical Rectangles, 2022 - All public data are under the Creative Commons (CC by 4.0) licence. RLB Revision 2 used. Not to be used for navigation. Data correct at time of export.

| | | | | | |
|-------|------------|---------|-------|---------|----------|
| v01 | 23/04/2025 | - | JC | AN | DS |
| Issue | Date | Remarks | Drawn | Checked | Approved |

Title

Fish Nursery And Spawning
Grounds Intensity Within The
Study Area (Part 2)

nationalgrid



Figure Number

Figure 20-3

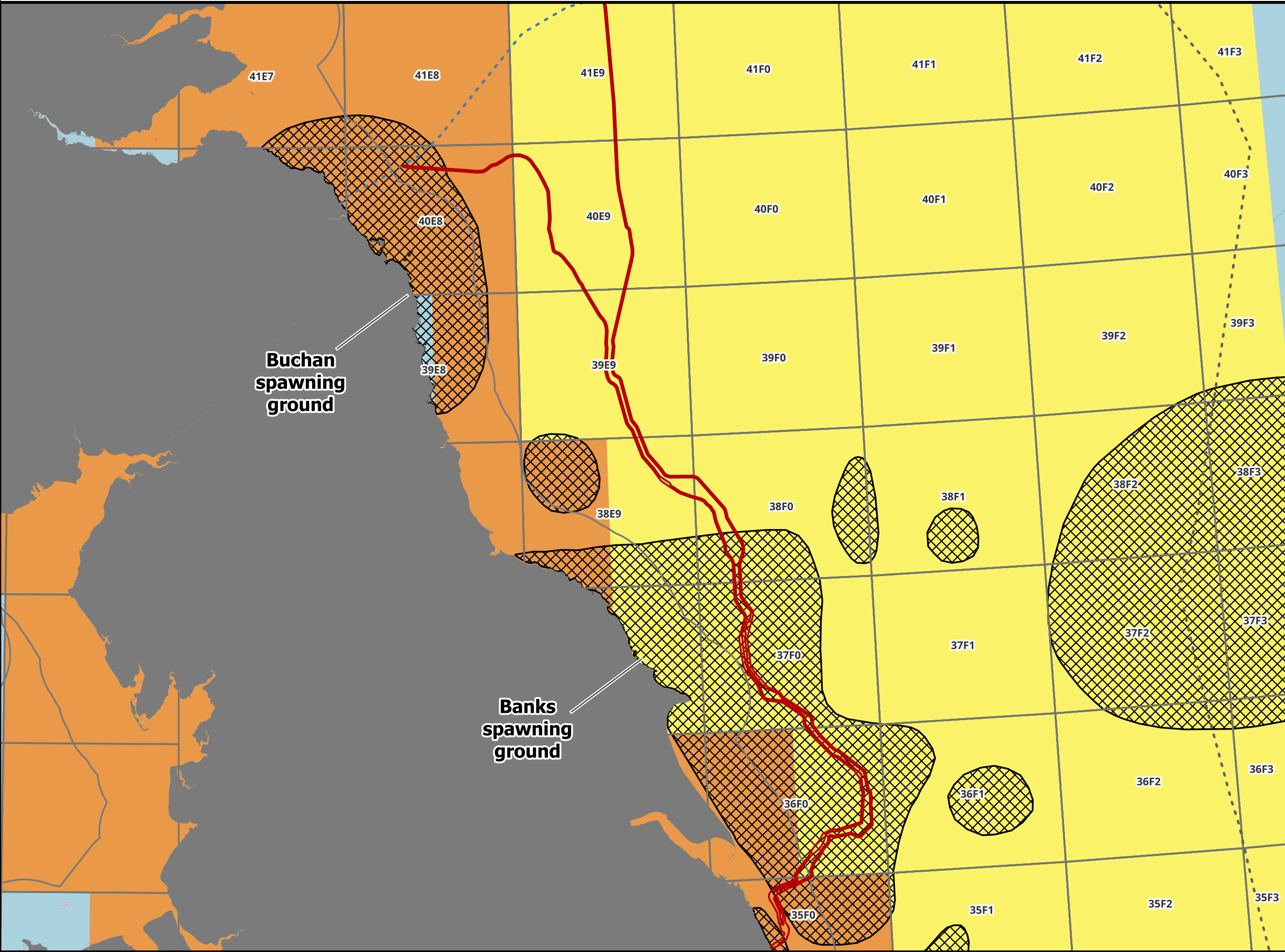
Drawing Reference

C01494-EGL3&4-FISH-019-B

| | | | |
|-------------|------------|--------------|-------|
| Scale | Sheet Size | Sheet | Issue |
| 1:4,500,000 | A3 | SHEET 1 OF 1 | 01 |



Herring Spawning And Nursery Grounds



Legend

- English Offshore Draft Order Limits
- ICES Statistical Rectangle
- Herring Spawning Ground (Coull et al, 1998)

Nursery Ground (Ellis et al, 2012)

- High Intensity
- Low Intensity
- 12NM Limit
- Scottish Adjacent Waters
- EEZ

Notes

This drawing is scaled at paper size A3, therefore any prints taken at smaller sizes will affect accuracy of the measurement units and should not be scaled against.

Centroid
Coordinate X: 673674.4006161599
Coordinate Y: 6083373.606036227

0 20 40 60 km

Copyright: © OpenStreetMap contributors; Copyright 1995–2024 Esri. All rights reserved. Published in the United States of America. The information contained in this work is the exclusive property of Environmental Systems Research Institute, Inc. (ESRI) / ESRI's - Spawning and Nursery Grounds Layers for Selected Fish in UK Waters in 2010 / 2012 / 1998 by Coull et al & Ellis et al (2012) - Contains public sector information licensed under the Open Government Licence v3.0. ICES - Statistical Rectangles, 2022 - All public data are under the Creative Commons (CC BY 4.0) licence. RLB Revision 2 used. Not to be used for navigation. Data correct at time of export.

| | | | | | |
|-------|------------|---------|-------|---------|----------|
| v01 | 16/04/2025 | - | JC | AN | DS |
| Issue | Date | Remarks | Drawn | Checked | Approved |

Title

Herring Spawning And Nursery Grounds

nationalgrid

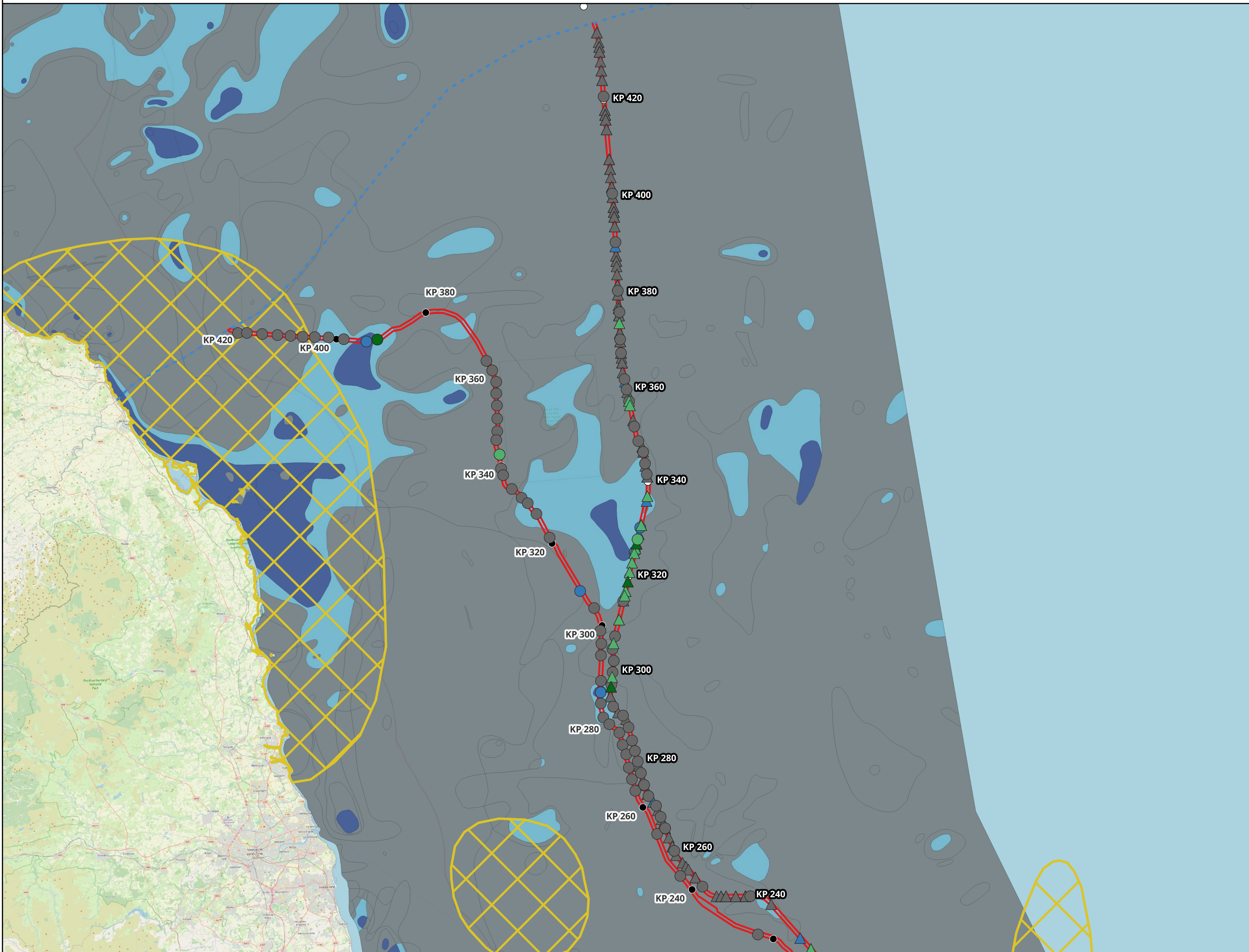
Figure Number: Figure 20-4

Drawing Reference: C01494-EGL3&4-FISH-016-C

| | | | |
|--------------------|----------------|---------------------|-----------|
| Scale: 1:1,400,000 | Sheet Size: A3 | Sheet: SHEET 1 OF 1 | Issue: 01 |
|--------------------|----------------|---------------------|-----------|



Herring Habitat Classification - England (Part 1)



Legend

- Draft Order Limits
- EGL 3 KP
- EGL 4 KP
- Herring Spawning Ground (Coull et al. 1998)
- Prime Habitat (PSA)
- Sub-prime Habitat (PSA)
- Suitable Habitat (PSA)
- Unsuitable Habitat (PSA)
- Prime Habitat (VC)
- Sub-prime Habitat (VC)
- Suitable Habitat (VC)
- Unsuitable Habitat (VC)

Herring Habitat Classification

- Preferred
- Marginal
- Unsuitable
- Scottish Adjacent Waters

Notes

This drawing is scaled at paper size A3, therefore any prints taken at smaller sizes will affect accuracy of the measurement units and should not be scaled against.



Centroid
Coordinate X: 665211.3038861468
Coordinate Y: 6169368.575589222

0 10 20 30 km

Base map and data from OpenStreetMap and OpenStreetMap Foundation (CC-BY-SA). © https://www.openstreetmap.org and contributors. © OpenStreetMap contributors. Copyright 1995–2023 Esri. All rights reserved. Published in the United States of America. The information contained in this work is the exclusive property of Environmental Systems Research Institute, Inc. ICES, EMODnet, UKHO & CEFAS - Contains public sector information licensed under the Open Government Licence v3.0. Coull et al., 1998.

| v01 | Date | Remarks | Drawn | Checked | Approved |
|-----|------------|---------|-------|---------|----------|
| v01 | 16/04/2025 | - | AN | JC | JDM |

Title

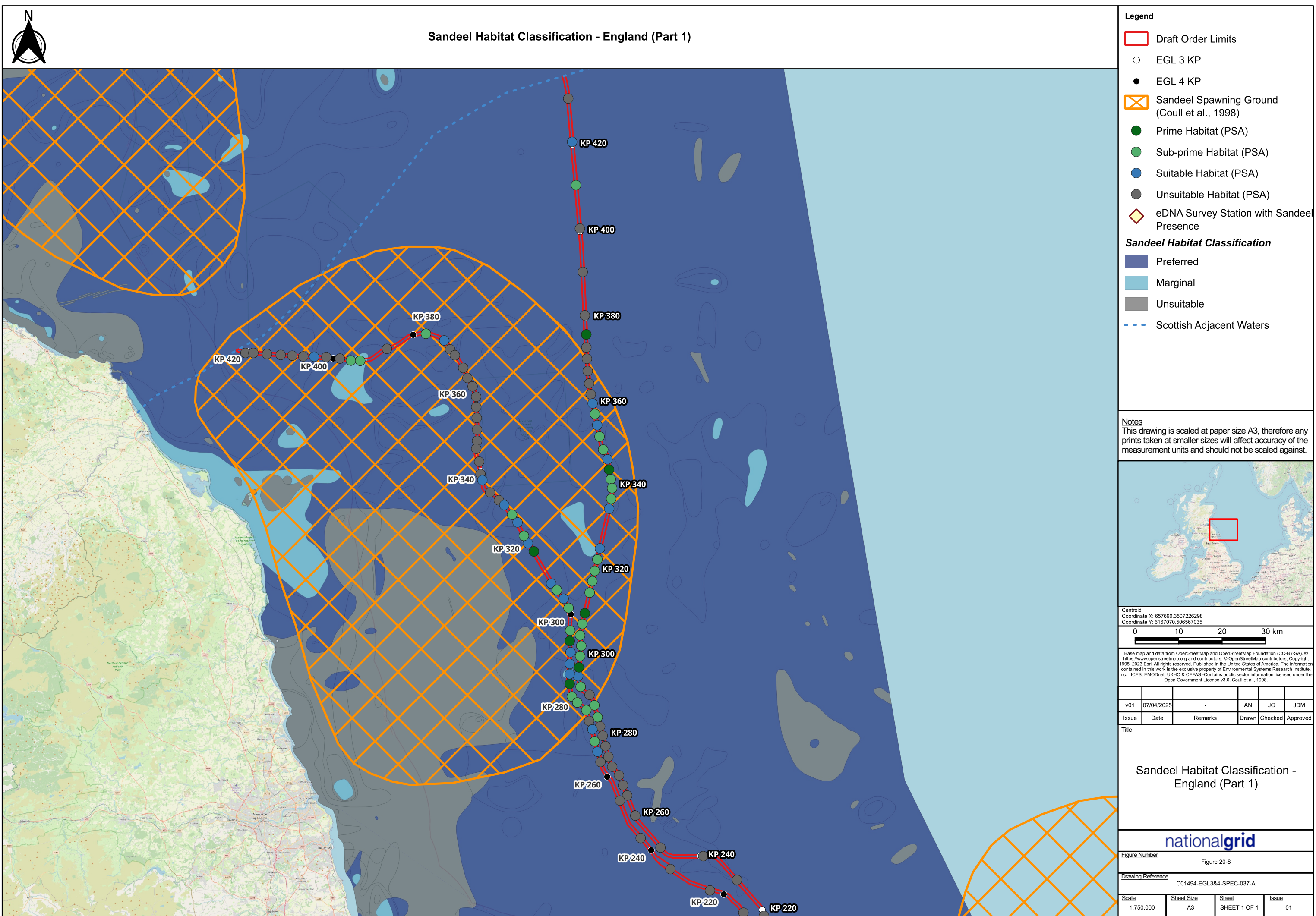
Herring Habitat Classification -
England (Part 1)

nationalgrid

Figure Number
Figure 20-5

Drawing Reference
C01494-EGL3&4-SPEC-034-B

| Scale | Sheet Size | Sheet | Issue |
|-----------|------------|--------------|-------|
| 1:750,000 | A3 | SHEET 1 OF 1 | 01 |



Sandeel Habitat Classification - England (Part 1)

Legend

- Draft Order Limits
- EGL 3 KP
- EGL 4 KP
- Sandeel Spawning Ground (Coull et al., 1998)
- Prime Habitat (PSA)
- Sub-prime Habitat (PSA)
- Suitable Habitat (PSA)
- Unsuitable Habitat (PSA)
- eDNA Survey Station with Sandeel Presence

Sandeel Habitat Classification

- Preferred
- Marginal
- Unsuitable
- Scottish Adjacent Waters

Notes

This drawing is scaled at paper size A3, therefore any prints taken at smaller sizes will affect accuracy of the measurement units and should not be scaled against.

Centroid
Coordinate X: 657690.3507226298
Coordinate Y: 6167070.506567035

0 10 20 30 km

Base map and data from OpenStreetMap and OpenStreetMap Foundation (CC-BY-SA). ©
https://www.openstreetmap.org and contributors. © OpenStreetMap contributors. Copyright
1965–2023 Esri. All rights reserved. Published in the United States of America. The information
contained in this work is the exclusive property of Environmental Systems Research Institute,
Inc. ICES, EMODnet, UKHO & CEFAAS-Contains public sector information licensed under the
Open Government Licence v3.0. Coull et al., 1998.

| v01 | 07/04/2025 | - | AN | JC | JDM |
|-------|------------|---------|-------|---------|----------|
| Issue | Date | Remarks | Drawn | Checked | Approved |

Title

Sandeel Habitat Classification - England (Part 1)










nationalgrid

Figure Number
Figure 20-8





Drawing Reference
C01494-EGL3&4-SPEC-037-A

| Scale | Sheet Size | Sheet | Issue |
|-----------|------------|--------------|-------|
| 1:750,000 | A3 | SHEET 1 OF 1 | 01 |

Legend

-  Draft Order Limits
-  EGL 3 KP
 -  EGL 4 KP
-  Sandeel Spawning Ground
(Coull et al., 1998)
 -  Prime Habitat (PSA)
 -  Sub-prime Habitat (PSA)
 -  Suitable Habitat (PSA)
 -  Unsuitable Habitat (PSA)
-  eDNA Survey Station with Sandeel Presence

Sandeel Habitat Classification

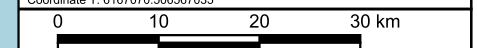
-  Preferred
 Marginal
 Unsuitable
 Scottish Adjacent Waters

Notes

This drawing is scaled at paper size A3, therefore any prints taken at smaller sizes will affect accuracy of the measurement units and should not be scaled against.



Centroid
Coordinate X: 657690.3507226298
Coordinate Y: 6167070.506567035



Base map and data from OpenStreetMap and OpenStreetMap Foundation (CC-BY-SA). © <https://www.openstreetmap.org> and contributors. © OpenStreetMap contributors: Copyright 1995–2023 Esri. All rights reserved. Published in the United States of America. The information contained in this work is the exclusive property of Environmental Systems Research Institute, Inc. ICES, EMODnet, UKHO & CEFA5 -Contains public sector information licensed under the Open Government Licence v3.0. Coull et al., 1998.

| | | | | | |
|-------|------------|---------|-------|---------|----------|
| | | | | | |
| v01 | 07/04/2025 | - | AN | JC | JDM |
| Issue | Date | Remarks | Drawn | Checked | Approved |

| | |
|-------|--|
| Title | |
|-------|--|

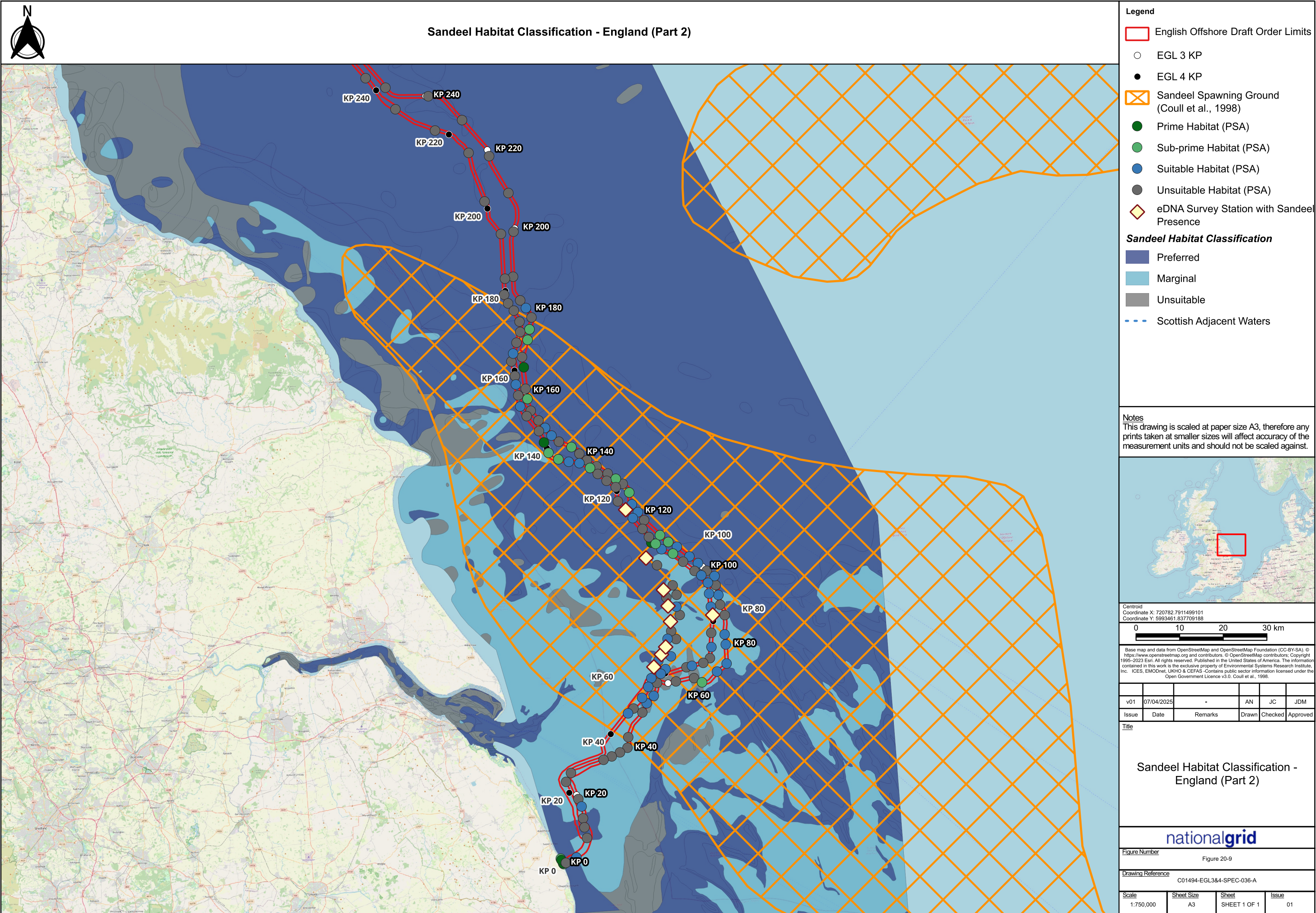
Sandeel Habitat Classification - England (Part 1)

national**grid**

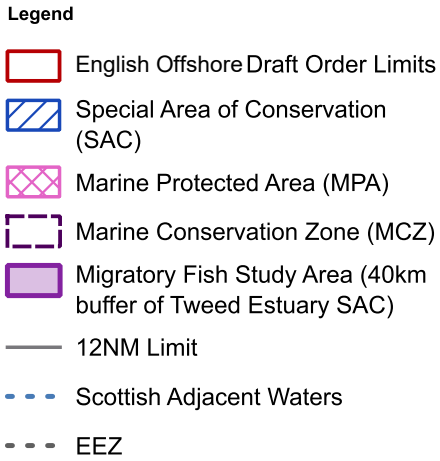
| | |
|---------------|-------------|
| Figure Number | Figure 20-8 |
|---------------|-------------|

| | |
|--------------------------|--------------------------|
| <u>Drawing Reference</u> | C01494-EGL3&4-SPEC-037-A |
|--------------------------|--------------------------|

| | | | |
|--------------|-------------------|--------------|--------------|
| <u>Scale</u> | <u>Sheet Size</u> | <u>Sheet</u> | <u>Issue</u> |
| 1:750,000 | A3 | SHEET 1 OF 1 | 01 |

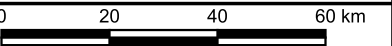


COPYRIGHT: NOT TO BE REPRODUCED WITHOUT THE WRITTEN PERMISSION OF NATIONAL GRID ELECTRICITY TRANSMISSION Plc



A map of the British Isles with an orange rectangular box highlighting the region of North East England. The box encompasses North Yorkshire, South Yorkshire, and West Yorkshire. Major cities like London, Manchester, and Birmingham are labeled, as are various rivers and the English Channel. The highlighted area is specifically the region of interest for the study.

Centroid
Coordinate X: 607494.2551305395
Coordinate Y: 6081355.918673862



Copyright: © OpenStreetMap contributors; Copyright 1995–2024 Esri. All rights reserved. Published in the United States of America. The information contained in this work is the exclusive property of Environmental Systems Research Institute, Inc. UKHO Contains public sector information licensed under the Open Government Licence v3.0. Contains OS data © Crown copyright and database right 2025. © Natural England/ JNCC copyright .RLB Revision 2 used. Not to be used for navigation. Data correct at time of export.

| | | | | | |
|-------|------------|---------|-------|---------|----------|
| | | | | | |
| v01 | 16/04/2025 | - | JC | AN | DS |
| Issue | Date | Remarks | Drawn | Checked | Approved |

Title

Relevant Designated Sites For
The Protection Of Fish And
Shellfish

nationalgrid  collaborative
environmental
advisers

Figure Number

Figure 20-10

| | |
|-------------------|--------------------------|
| Drawing Reference | C01494-EGL3&4-FISH-015-C |
|-------------------|--------------------------|

| | | | |
|--------------|-------------------|--------------|--------------|
| <u>Scale</u> | <u>Sheet Size</u> | <u>Sheet</u> | <u>Issue</u> |
| 1:1,400,000 | A3 | SHEET 1 OF 1 | 01 |