

N

Figure 14-1  
Air Quality Study Area

the Projects draft Order Limits

English Onshore Scheme

This drawing is scaled at paper size A3, therefore any prints taken at smaller sizes will affect accuracy of the measurement units and should not be scaled against.

Service Layer Credits: OS Open Greyscale: Contains OS data © Crown Copyright and database right 2020 GB\_Hillshade: Contains OS data © Crown Copyright and database right 2023

Contains data from OS Zoomstack GB Topographic: Contains OS data © Crown Copyright and database right 2025

Contains data from OS Zoomstack

ENGLAND

Coordinate System: British National Grid  
Sheet X Centroid Coordinate: 541021.2E Sheet Y Centroid Coordinate: 360260N

05001,0002,000

Meters

BACKGROUND MAPPING INFORMATION HAS BEEN REPRODUCED FROM THE ORDNANCE SURVEY BY PERMISSION OF ORDNANCE SURVEY OF THE CONTROLLER OF HIS MAJESTY'S STATIONERY OFFICE. © CROWN COPYRIGHT AND DATABASE RIGHTS 2024 ORDNANCE SURVEY 0100031673.

1MAY 25FIRST ISSUEDDJS

IssueDateRemarksDrawnCheckedApproved

Title

AIR QUALITY STUDY AREA

nationalgrid

Figure NumberFIGURE 14-1

Drawing ReferenceEGL-ARC-CONS-XX-DR-G-018

Scale1:50,000

Sheet SizeA3

SheetSHEET 2 OF 7

Issue1

N

Figure 14-1  
Air Quality Study Area

the Projects draft Order Limits

English Onshore Scheme

Notes

This drawing is scaled at paper size A3, therefore any prints taken at smaller sizes will affect accuracy of the measurement units and should not be scaled against.

Service Layer Credits: OS Open Greyscale: Contains OS data © Crown Copyright and database right 2020 GB\_Hillshade: Contains OS data © Crown Copyright and database right 2023

Contains data from OS Zoomstack GB Topographic: Contains OS data © Crown Copyright and database right 2025

Contains data from OS Zoomstack

ENGLAND

Coordinate System: British National Grid

Sheet X Centroid Coordinate: 541021.2E Sheet Y Centroid Coordinate: 360260N

05001,0002,000

Meters

BACKGROUND MAPPING INFORMATION HAS BEEN REPRODUCED FROM THE ORDNANCE SURVEY BY PERMISSION OF ORDNANCE SURVEY OF THE CONTROLLER OF HIS MAJESTY'S STATIONERY OFFICE. © CROWN COPYRIGHT AND DATABASE RIGHTS 2024 ORDNANCE SURVEY 0100031673.

1	MAY 25	FIRST ISSUE	DD	JS	TW
Issue	Date	Remarks	Drawn	Checked	Approved
Title					
AIR QUALITY STUDY AREA					

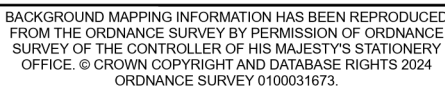
nationalgrid

Figure NumberFIGURE 14-1

Drawing ReferenceEGL-ARC-CONS-XX-DR-G-018

Scale	Sheet Size	Sheet	Issue
1:50,000	A3	SHEET 2 OF 7	1

A map of the East of England region, showing the coastline and major rivers. A black box highlights the study area in Essex, located on the northern coast of the region. The word 'ENGLAND' is visible in the bottom left corner of the map.



Title

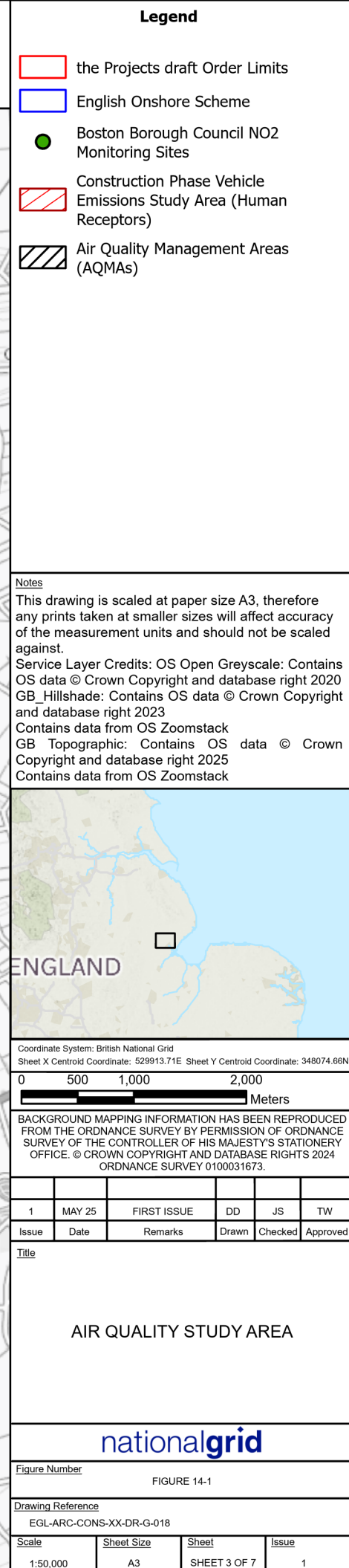
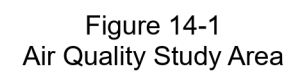
AIR QUALITY STUDY AREA

Figure Number

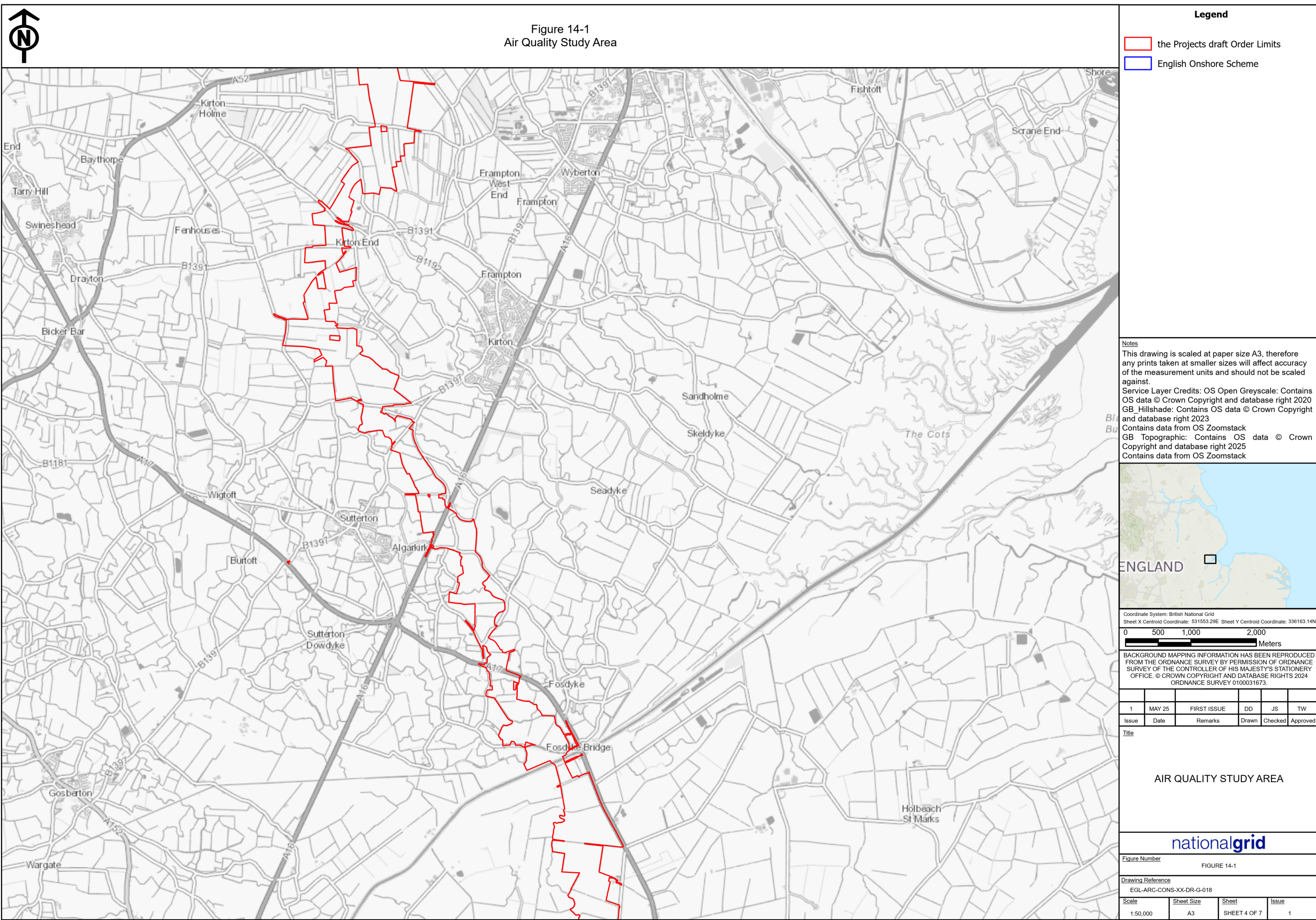
FIGURE 14-1

<u>Scale</u>	<u>Sheet Size</u>	<u>Sheet</u>	<u>Issue</u>
1:50,000	A3	SHEET 2 OF 7	1









N

Figure 14-1  
Air Quality Study Area

the Projects draft Order Limits

English Onshore Scheme

This drawing is scaled at paper size A3, therefore any prints taken at smaller sizes will affect accuracy of the measurement units and should not be scaled against.

Service Layer Credits: OS Open Greyscale: Contains OS data © Crown Copyright and database right 2020 GB\_Hillshade: Contains OS data © Crown Copyright and database right 2023

Contains data from OS Zoomstack GB Topographic: Contains OS data © Crown Copyright and database right 2025

Contains data from OS Zoomstack

ENGLAND

Coordinate System: British National Grid  
Sheet X Centroid Coordinate: 531553.29E Sheet Y Centroid Coordinate: 336163.14N

05001,0002,000

Meters

BACKGROUND MAPPING INFORMATION HAS BEEN REPRODUCED FROM THE ORDNANCE SURVEY BY PERMISSION OF ORDNANCE SURVEY OF THE CONTROLLER OF HIS MAJESTY'S STATIONERY OFFICE. © CROWN COPYRIGHT AND DATABASE RIGHTS 2024 ORDNANCE SURVEY 0100031673.

1MAY 25FIRST ISSUEDDJS

IssueDateRemarksDrawnCheckedApproved

Title

AIR QUALITY STUDY AREA

nationalgrid

Figure Number

FIGURE 14-1

Drawing Reference

EGL-ARC-CONS-XX-DR-G-018

Scale

Sheet Size

Sheet

Issue

1:50,000

A3

SHEET 4 OF 7

1

The map displays a detailed view of the Air Quality Study Area. The area is bounded by a red line representing the 'Projects draft Order Limits'. Key features include:

- Road Network:** Major roads shown include the A52 running north-south through the center, and the A16 running east-west across the middle. Other roads like B1391, B1397, B1192, B1181, B139, and A152 are also visible.
- Settlements and Landmarks:** Numerous locations are labeled, such as Kirton End, Frampton, Wyberton, Sandholme, Skeldyke, Seadyke, Sutterton, Algarkirk, Fosdyke, and Fosdyke Bridge. Other areas include Baythorpe, Tarry Hill, Swineshead, Drayton, Bicker Bar, Wigtoft, Burtoft, Sutterton Dowdyke, Gosberton, Wargate, Fishoft, Scran End, and Holbeach St Marks.
- Geographical Features:** The River Great Ouse flows along the eastern edge of the study area. The coastline is visible in the northeast corner.
- Infrastructure:** A railway line runs parallel to the A16 road in the central-eastern part of the map.

**Legend**

the Projects draft Order Limits

English Onshore Scheme

- Legend**
- the Projects draft Order Limits
- English Onshore Scheme

Notes

This drawing is scaled at paper size A3, therefore any prints taken at smaller sizes will affect accuracy of the measurement units and should not be scaled against.

Service Layer Credits: OS Open Greyscale: Contains OS data © Crown Copyright and database right 2020 GB\_Hillshade: Contains OS data © Crown Copyright and database right 2023

Contains data from OS Zoomstack

GB Topographic: Contains OS data © Crown Copyright and database right 2025

Contains data from OS Zoomstack

Notes

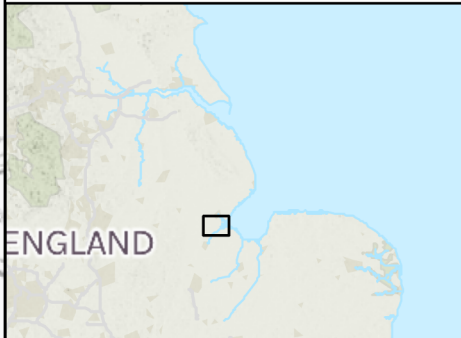
This drawing is scaled at paper size A3, therefore any prints taken at smaller sizes will affect accuracy of the measurement units and should not be scaled against.

Service Layer Credits: OS Open Greyscale: Contains OS data © Crown Copyright and database right 2020 GB\_Hillshade: Contains OS data © Crown Copyright and database right 2023

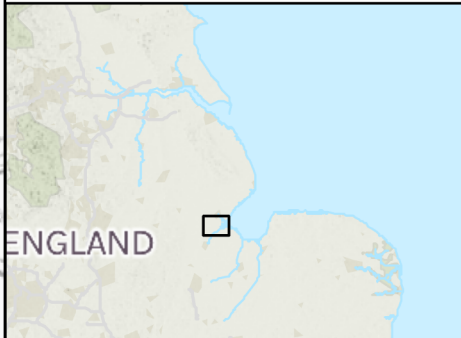
Contains data from OS Zoomstack

GB Topographic: Contains OS data © Crown Copyright and database right 2025

Contains data from OS Zoomstack




A map of England with a black box indicating the location of the study area on the south coast.



A map of England with a black box indicating the location of the study area on the south coast.



A map of England with a black box indicating the location of the study area on the south coast.




A map of England with a black box indicating the location of the study area on the south coast.



A map of England with a black box indicating the location of the study area on the south coast.




A map of England with a black box indicating the location of the study area on the south coast.



A map of England with a black box indicating the location of the study area on the south coast.

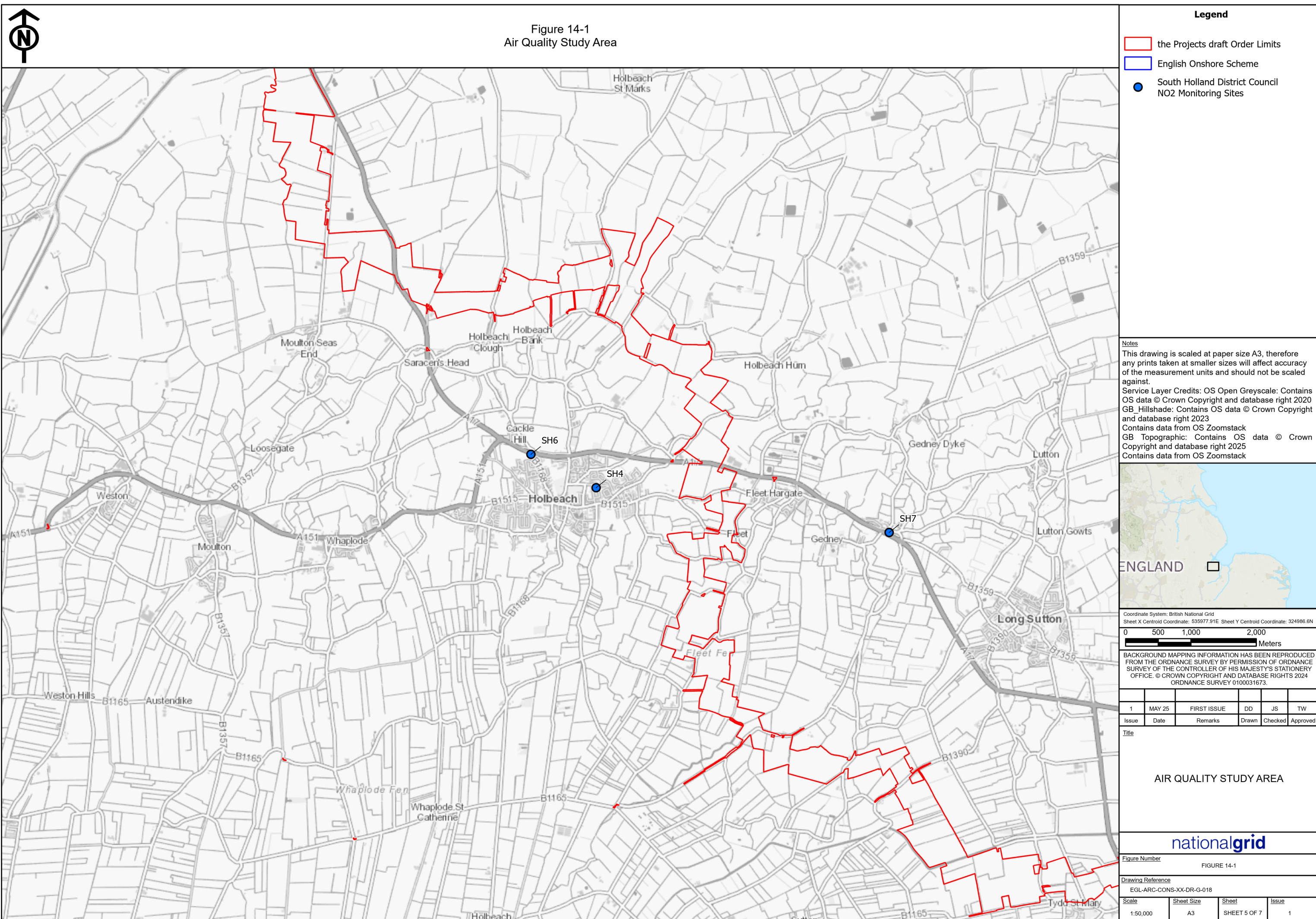


A map of England with a black box indicating the location of the study area on the south coast.



A map of England with a black box indicating the location of the study area on the south coast.





**Figure 14-1**  
Air Quality Study Area

**Legend**

- the Projects draft Order Limits
- English Onshore Scheme
- South Holland District Council NO2 Monitoring Sites

**Notes**

This drawing is scaled at paper size A3, therefore any prints taken at smaller sizes will affect accuracy of the measurement units and should not be scaled against.

Service Layer Credits: OS Open Greyscale: Contains OS data © Crown Copyright and database right 2020  
GB\_Hillshade: Contains OS data © Crown Copyright and database right 2023  
Contains data from OS Zoomstack  
GB Topographic: Contains OS data © Crown Copyright and database right 2025  
Contains data from OS Zoomstack

**ENGLAND**

Coordinate System: British National Grid  
Sheet X Centroid Coordinate: 535977.91E Sheet Y Centroid Coordinate: 324986.6N

0 500 1,000 2,000  
Meters

BACKGROUND MAPPING INFORMATION HAS BEEN REPRODUCED FROM THE ORDNANCE SURVEY BY PERMISSION OF ORDNANCE SURVEY OF THE CONTROLLER OF HIS MAJESTY'S STATIONERY OFFICE. © CROWN COPYRIGHT AND DATABASE RIGHTS 2024  
ORDNANCE SURVEY 0100031673.

1	MAY 25	FIRST ISSUE	DD	JS	TW
Issue	Date	Remarks	Drawn	Checked	Approved

**AIR QUALITY STUDY AREA**




**nationalgrid**




Figure Number: FIGURE 14-1

Drawing Reference: EGL-ARC-CONS-XX-DR-G-018

Scale	Sheet Size	Sheet	Issue
1:50,000	A3	SHEET 5 OF 7	1

### Legend

	the Projects draft Order Limits
	English Onshore Scheme
	South Holland District Council NO2 Monitoring Sites

- ### Legend
- |   |  |
|---|--|
|  | the Projects draft Order Limits                        |
|  | English Onshore Scheme                                 |
|  | South Holland District Council<br>NO2 Monitoring Sites |

Notes


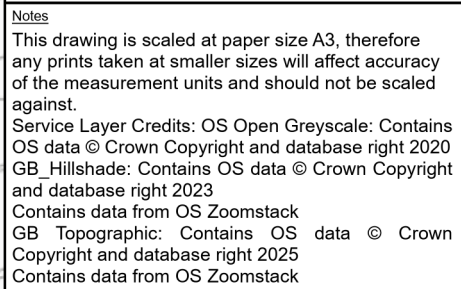
This drawing is scaled at paper size A3, therefore any prints taken at smaller sizes will affect accuracy of the measurement units and should not be scaled against.

Service Layer Credits: OS Open Greyscale: Contains OS data © Crown Copyright and database right 2020  
GB\_Hillshade: Contains OS data © Crown Copyright and database right 2023  
Contains data from OS Zoomstack  
GB Topographic: Contains OS data © Crown Copyright and database right 2025  
Contains data from OS Zoomstack

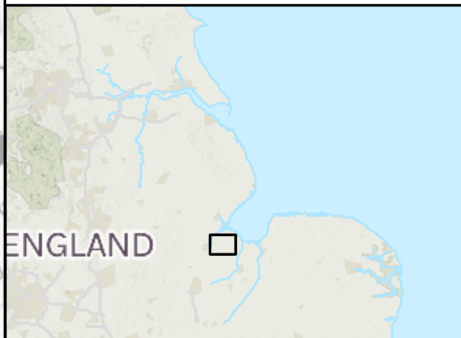
Notes

This drawing is scaled at paper size A3, therefore any prints taken at smaller sizes will affect accuracy of the measurement units and should not be scaled against.

Service Layer Credits: OS Open Greyscale: Contains OS data © Crown Copyright and database right 2020  
GB\_Hillshade: Contains OS data © Crown Copyright and database right 2023  
Contains data from OS Zoomstack  
GB Topographic: Contains OS data © Crown Copyright and database right 2025  
Contains data from OS Zoomstack



A map of England with a black box in the south-east corner indicating the location of the study area. The word 'ENGLAND' is written in large, bold, black capital letters on the left side of the map.



0 500 1,000 2,000  
Meters

BACKGROUND MAPPING INFORMATION HAS BEEN REPRODUCED FROM THE ORDNANCE SURVEY BY PERMISSION OF ORDNANCE SURVEY OF THE CONTROLLER OF HIS MAJESTY'S STATIONERY OFFICE. © CROWN COPYRIGHT AND DATABASE RIGHTS 2024  
ORDNANCE SURVEY 0100031673.

1	MAY 25	FIRST ISSUE	DD	JS	TW
Issue	Date	Remarks	Drawn	Checked	Approved

AIR QUALITY STUDY AREA

AIR QUALITY STUDY AREA


Title
AIR QUALITY STUDY AREA


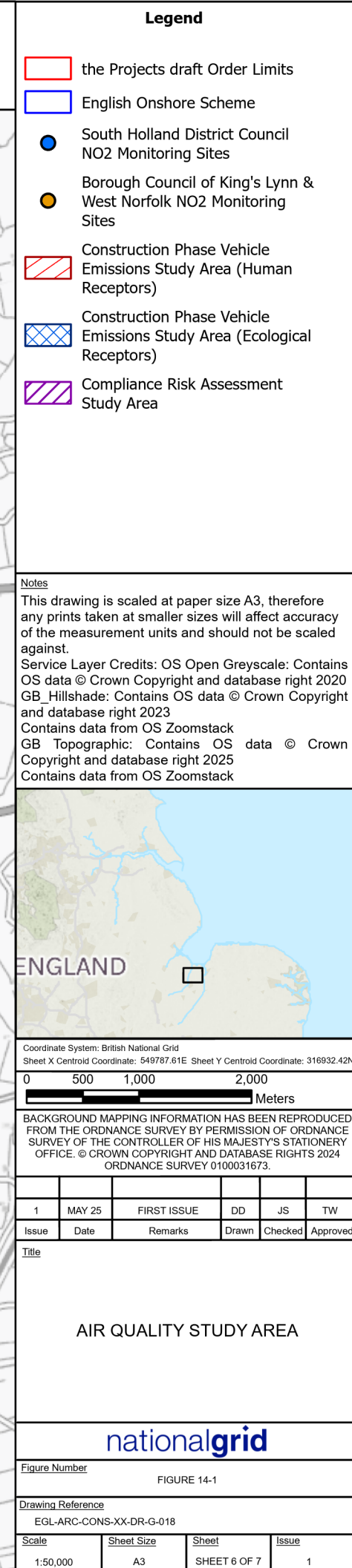
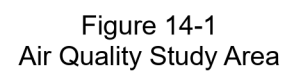
Figure Number

FIGURE 14-1

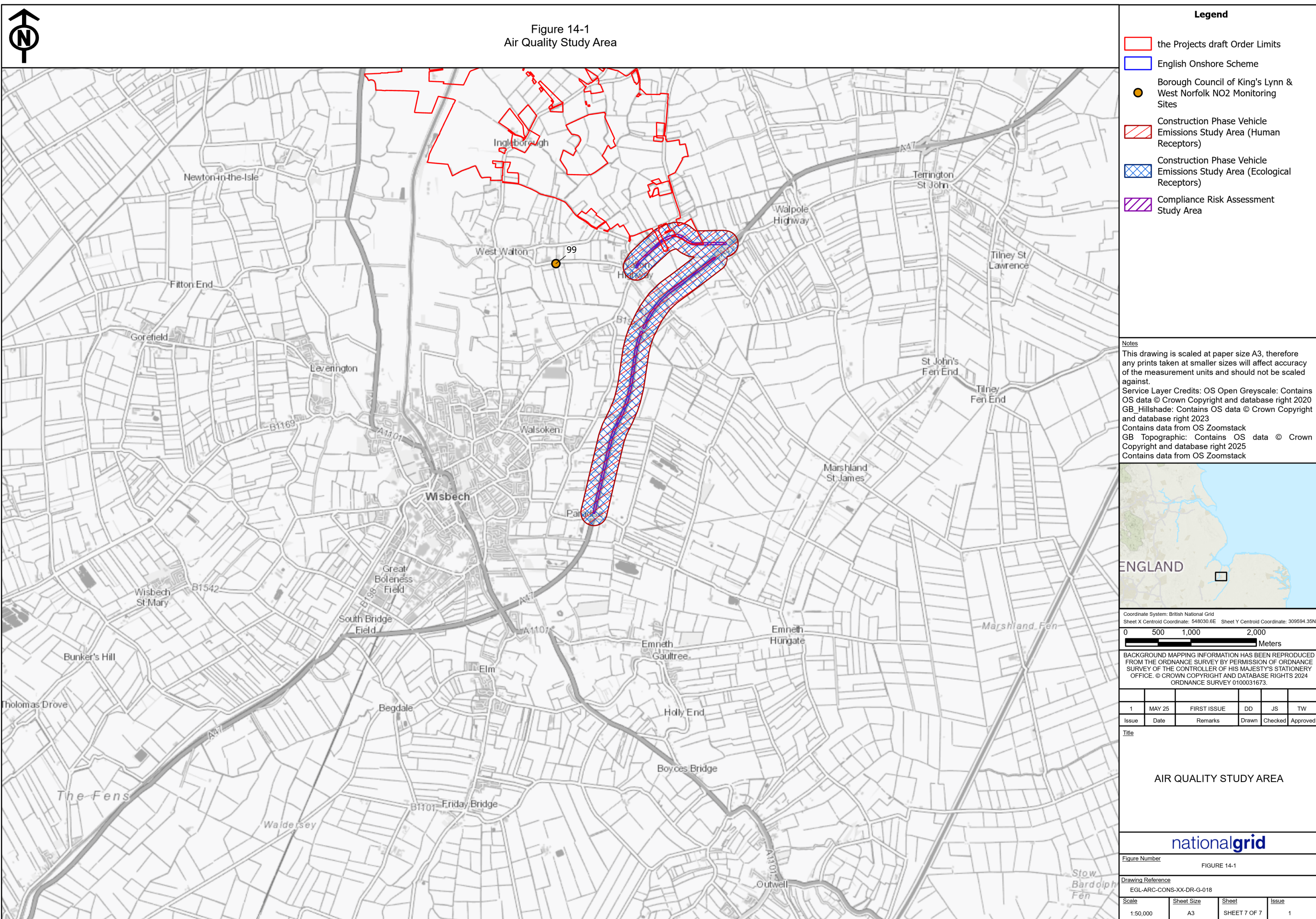
Figure Number

FIGURE 14-1

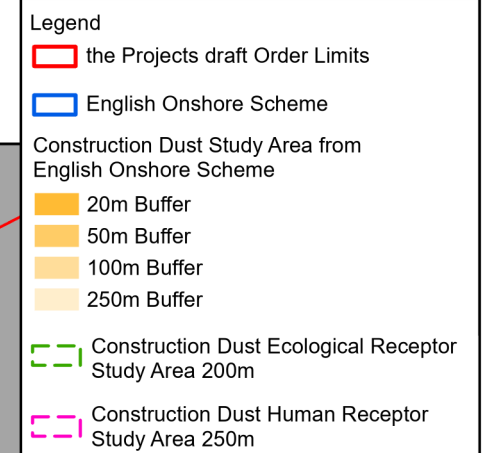
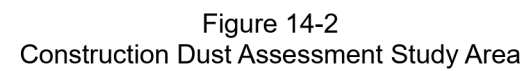










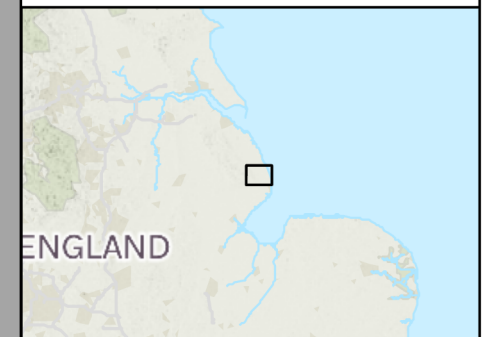


## Notes

This drawing is scaled at paper size A3, therefore any prints taken at smaller sizes will affect accuracy of the measurement units and should not be scaled against.

Service Layer Credits: OS Open Greyscale: Contains OS data © Crown Copyright and database right 2020  
GB\_Hillshade: Contains OS data © Crown Copyright and database right 2023

Contains data from OS Zoomstack  
GB Topographic: Contains OS data © Crown  
Copyright and database right 2025  
Contains data from OS Zoomstack



Coordinate System: British National Grid  
Sheet X Centroid Coordinate: 549309.24E Sheet Y Centroid Coordinate: 372223.16N



BACKGROUND MAPPING INFORMATION HAS BEEN REPRODUCED FROM THE ORDNANCE SURVEY BY PERMISSION OF ORDNANCE SURVEY OF THE CONTROLLER OF HIS MAJESTY'S STATIONERY OFFICE. © CROWN COPYRIGHT AND DATABASE RIGHTS 2024 ORDNANCE SURVEY 0100031673.

1	MAY 25	FIRST ISSUE	DD	JS	TW
Issue	Date	Remarks	Drawn	Checked	Approved

Title
<p align="center"><b>CONSTRUCTION DUST ASSESSMENT STUDY AREA</b></p>

national**grid**

Figure Number

FIGURE 14-2

Drawing Reference
EGL-ARC-CONS-XX-DR-G-019

<u>Scale</u>	<u>Sheet Size</u>	<u>Sheet</u>	<u>Issue</u>
1:50,000	A3	SHEET 1 OF 6	1



