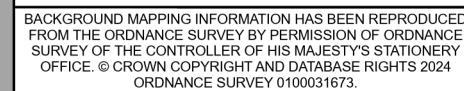


Contains data from OS Zoomstack
GB Topographic: Contains OS data © Crown
Copyright and database right 2025
Contains data from OS Zoomstack



| | | | | | |
|-------|--------|-------------|-------|---------|----------|
| | | | | | |
| 1 | MAY 25 | FIRST ISSUE | DD | LH | BL |
| Issue | Date | Remarks | Drawn | Checked | Approved |

NATIONAL SOIL ASSOCIATION

national**grid**

Figure Number

FIGURE 11-1

| | |
|-------------------|--------------------------|
| Drawing Reference | EGL-ARC-CONS-XX-DR-G-020 |
|-------------------|--------------------------|

| <u>Scale</u> | <u>Sheet Size</u> | <u>Sheet</u> | <u>Issue</u> |
|--------------|-------------------|--------------|--------------|
| 1:50,000 | A3 | SHEET 1 OF 6 | 1 |

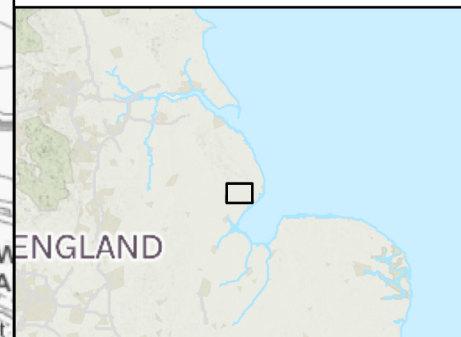


- the Projects draft Order Limits
- Data extent
- BLACKWOOD
- CUCKNEY 2
- DOWNHOLLAND 1
- DOWNHOLLAND 2
- FLADBURY 2
- HOLDERNESS
- LAKE
- SALOP
- WALLASEA 2
- WICKHAM 2

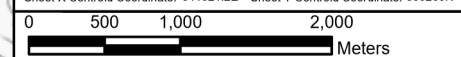
Notes

This drawing is scaled at paper size A3, therefore any prints taken at smaller sizes will affect accuracy of the measurement units and should not be scaled against.

Service Layer Credits: OS Open Greyscale: Contains OS data © Crown Copyright and database right 2020
GB_Hillshade: Contains OS data © Crown Copyright and database right 2023
Contains data from OS Zoomstack
GB Topographic: Contains OS data © Crown Copyright and database right 2025
Contains data from OS Zoomstack



Coordinate System: British National Grid
Sheet X Centroid Coordinate: 541021.2E Sheet Y Centroid Coordinate: 360260N



BACKGROUND MAPPING INFORMATION HAS BEEN REPRODUCED FROM THE ORDNANCE SURVEY BY PERMISSION OF ORDNANCE SURVEY OF THE CONTROLLER OF HIS MAJESTY'S STATIONERY OFFICE. © CROWN COPYRIGHT AND DATABASE RIGHTS 2024 ORDNANCE SURVEY 0100031673.

| | | | | | |
|-------|--------|-------------|-------|---------|----------|
| | | | | | |
| 1 | MAY 25 | FIRST ISSUE | DD | LH | BL |
| Issue | Date | Remarks | Drawn | Checked | Approved |

| | |
|-------|--|
| Title | |
|-------|--|

NATIONAL SOIL ASSOCIATION

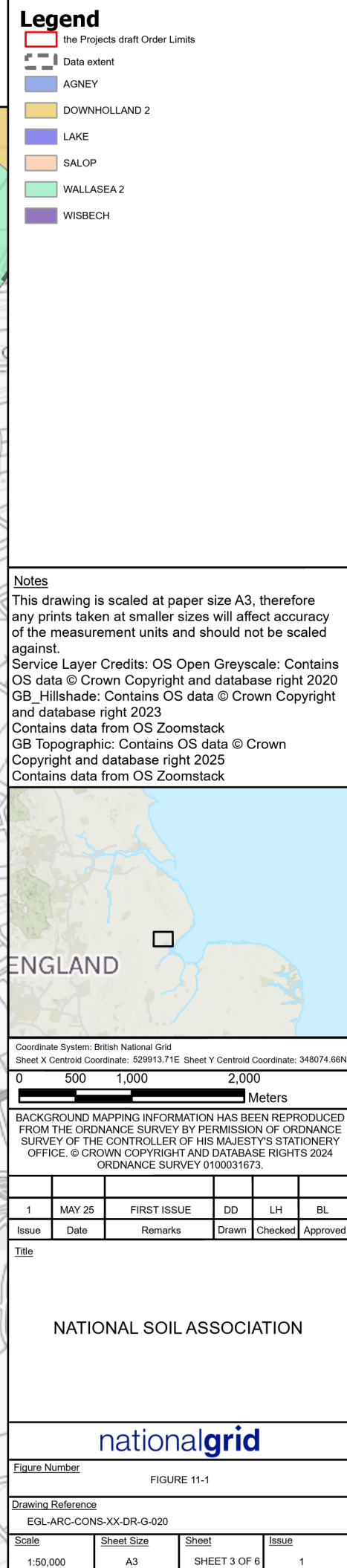
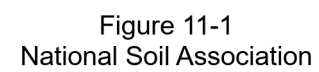
nationalgrid

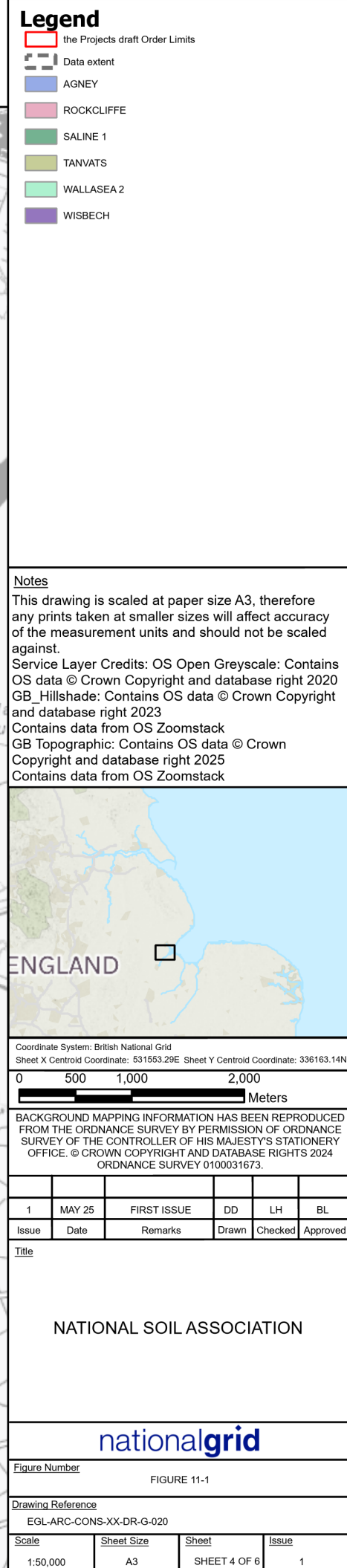
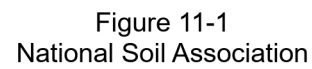
Figure Number

FIGURE 11-1

Drawing Reference
FGI-ARC-CONS-XX-DR-G-020

| <u>Scale</u> | <u>Sheet Size</u> | <u>Sheet</u> | <u>Issue</u> |
|--------------|-------------------|--------------|--------------|
| 1:50,000 | A3 | SHEET 2 OF 6 | 1 |

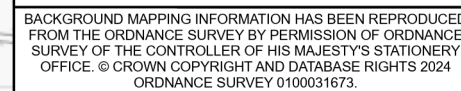






This drawing is scaled at paper size A3, therefore any prints taken at smaller sizes will affect accuracy of the measurement units and should not be scaled against.

Service Layer Credits: OS Open Greyscale: Contains OS data © Crown Copyright and database right 2020
GB_Hillshade: Contains OS data © Crown Copyright and database right 2023
Contains data from OS Zoomstack
GB Topographic: Contains OS data © Crown Copyright and database right 2025
Contains data from OS Zoomstack



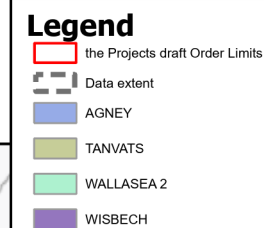
Title

NATIONAL SOIL ASSOCIATION

Figure Number

FIGURE 11-1

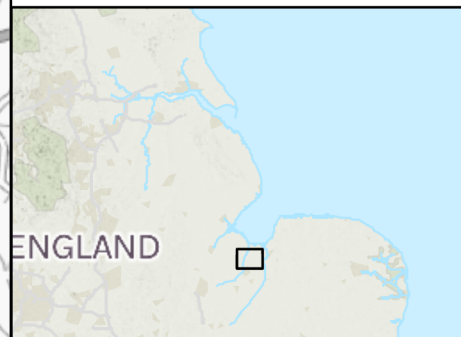
| | | | |
|--------------|-------------------|--------------|--------------|
| <u>Scale</u> | <u>Sheet Size</u> | <u>Sheet</u> | <u>Issue</u> |
| 1:50,000 | A3 | SHEET 5 OF 6 | 1 |



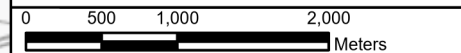
Notes

This drawing is scaled at paper size A3, therefore any prints taken at smaller sizes will affect accuracy of the measurement units and should not be scaled against.

Service Layer Credits: OS Open Greyscale: Contains OS data © Crown Copyright and database right 2020
GB_Hillshade: Contains OS data © Crown Copyright and database right 2023
Contains data from OS Zoomstack
GB Topographic: Contains OS data © Crown Copyright and database right 2025
Contains data from OS Zoomstack



Coordinate System: British National Grid
Sheet X Centroid Coordinate: 549787.61E Sheet Y Centroid Coordinate: 316932.42N



BACKGROUND MAPPING INFORMATION HAS BEEN REPRODUCED FROM THE ORDNANCE SURVEY BY PERMISSION OF ORDNANCE SURVEY OF THE CONTROLLER OF HIS MAJESTY'S STATIONERY OFFICE. © CROWN COPYRIGHT AND DATABASE RIGHTS 2024 ORDNANCE SURVEY 0100031673.

| | | | | | |
|-------|--------|-------------|-------|---------|----------|
| 1 | MAY 25 | FIRST ISSUE | DD | LH | BL |
| Issue | Date | Remarks | Drawn | Checked | Approved |

Title

NATIONAL SOIL ASSOCIATION


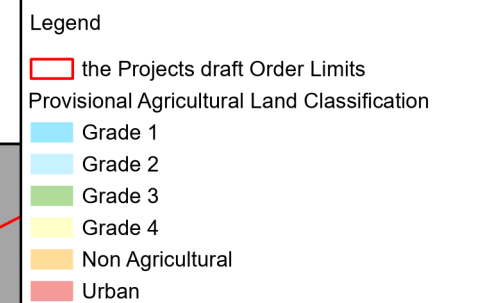
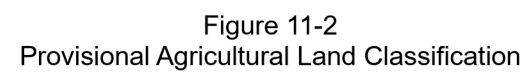
nationalgrid

Figure Number

FIGURE 11-1

Drawing Reference
EGL-ARC-CONS-XX-DR-G-020

| | | | |
|--------------|-------------------|--------------|--------------|
| <u>Scale</u> | <u>Sheet Size</u> | <u>Sheet</u> | <u>Issue</u> |
| 1:50,000 | A3 | SHEET 6 OF 6 | 1 |



A map of England with a black box in the southeast indicating the location of the study area. The word "ENGLAND" is written in large, bold, black capital letters across the middle of the map.

A horizontal scale bar with markings at 0, 500, 1,000, and 2,000. The word "Metres" is written at the right end of the bar.

BACKGROUND MAPPING INFORMATION HAS BEEN REPRODUCED FROM THE ORDNANCE SURVEY BY PERMISSION OF ORDNANCE SURVEY OF THE CONTROLLER OF HIS MAJESTY'S STATIONERY OFFICE. © CROWN COPYRIGHT AND DATABASE RIGHTS 2025
ORDNANCE SURVEY 0100031673

| | | | | | |
|-------|--------|-------------|-------|---------|----------|
| 1 | MAY 25 | FIRST ISSUE | DD | LH | BL |
| Issue | Date | Remarks | Drawn | Checked | Approved |

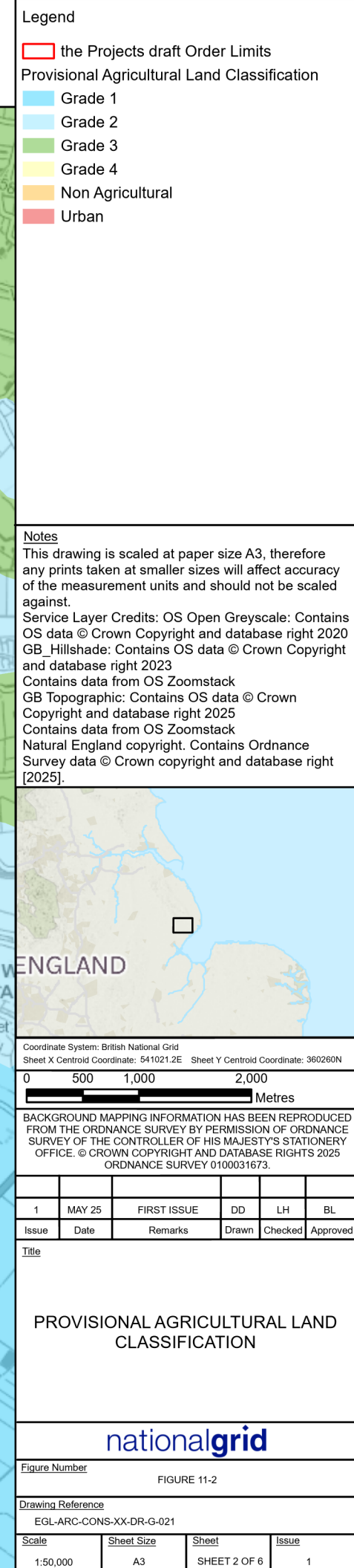
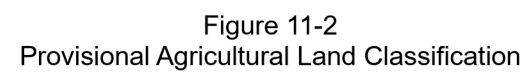
Title

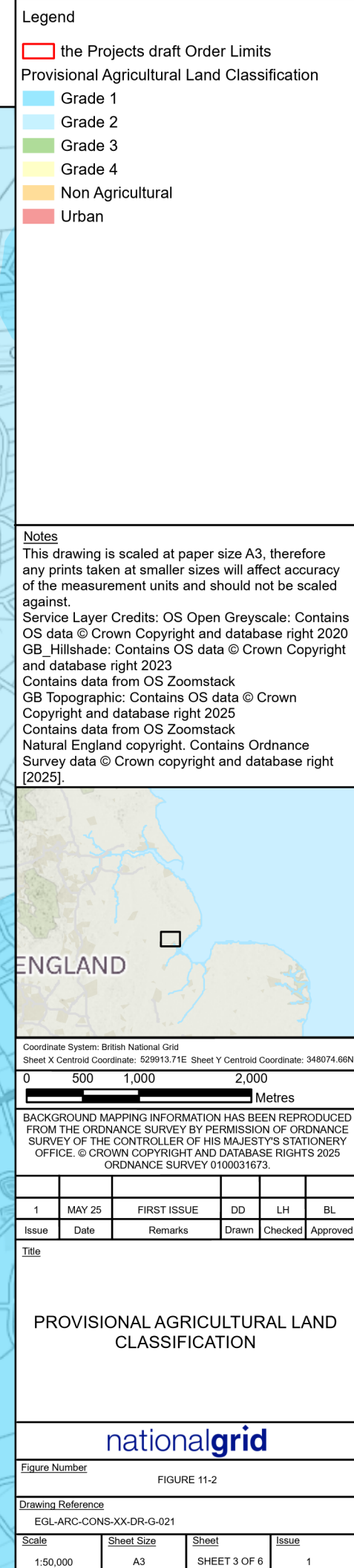
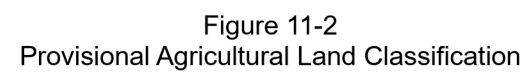
PROVISIONAL AGRICULTURAL LAND
CLASSIFICATION

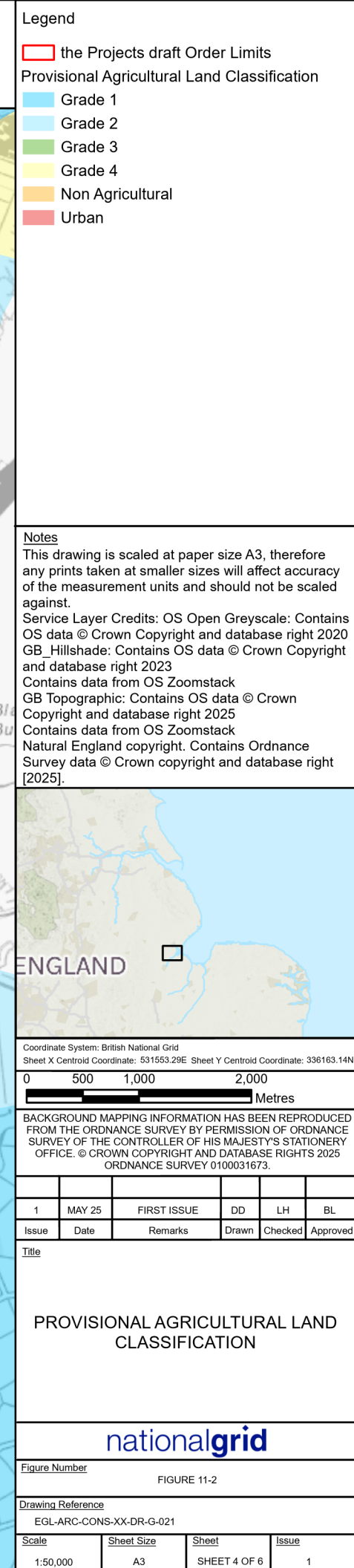
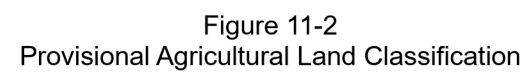
national**grid**

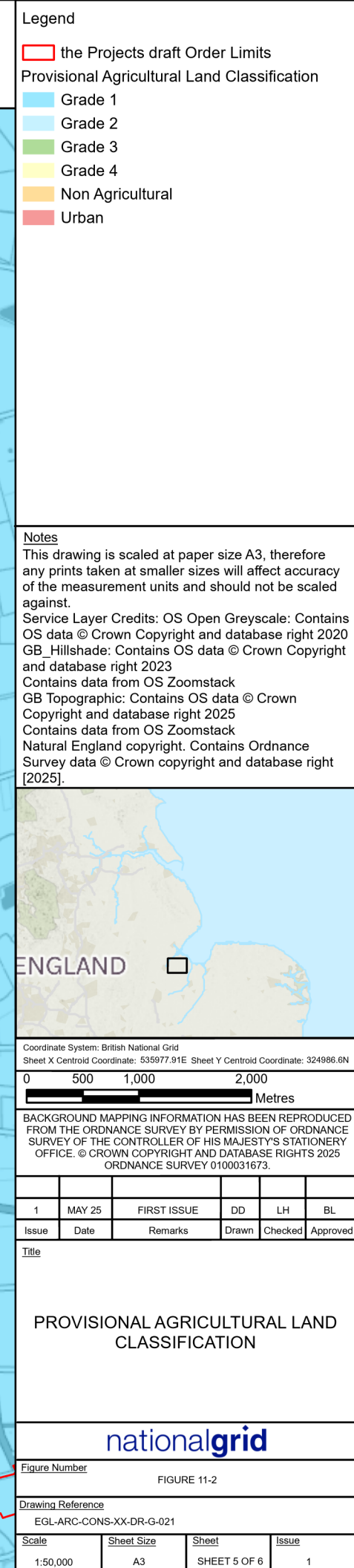
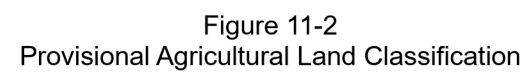
| | |
|---------------|-------------|
| Figure Number | FIGURE 11-2 |
|---------------|-------------|


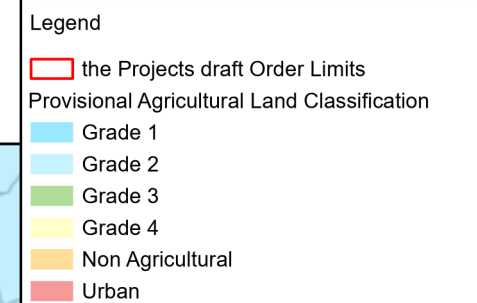
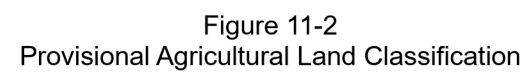
| | | | |
|--|-------------------------|------------------------------|-------------------|
| <u>Drawing Reference</u> EGL-ARC-CONS-XX-DR-G-021 | | | |
| <u>Scale</u> 1:50,000 | <u>Sheet Size</u> A3 | <u>Sheet</u> SHEET 1 OF 6 | <u>Issue</u> 1 |











A map of England with a black box in the south-east corner indicating the location of the study area. The word "ENGLAND" is written in large, bold, black capital letters across the middle of the map.

Coordinate System: British National Grid
Sheet X Centroid Coordinate: 549787.61E Sheet Y Centroid Coordinate: 316932.42N



BACKGROUND MAPPING INFORMATION HAS BEEN REPRODUCED FROM THE ORDNANCE SURVEY BY PERMISSION OF ORDNANCE SURVEY OF THE CONTROLLER OF HIS MAJESTY'S STATIONERY OFFICE. © CROWN COPYRIGHT AND DATABASE RIGHTS 2025
ORDNANCE SURVEY 0100031673

| | | | | | |
|-------|--------|-------------|-------|---------|----------|
| 1 | MAY 25 | FIRST ISSUE | DD | LH | BL |
| Issue | Date | Remarks | Drawn | Checked | Approved |

Title


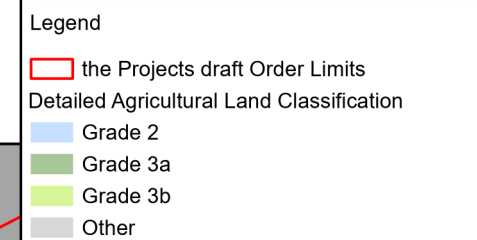
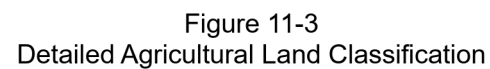
PROVISIONAL AGRICULTURAL LAND
CLASSIFICATION

national**grid**

Figure Number

FIGURE 11-2

| | | | |
|--|-------------------------|------------------------------|-------------------|
| <u>Drawing Reference</u> EGL-ARC-CONS-XX-DR-G-021 | | | |
| <u>Scale</u> 1:50,000 | <u>Sheet Size</u> A3 | <u>Sheet</u> SHEET 6 OF 6 | <u>Issue</u> 1 |



A map of England with a black box in the southeast indicating the location of the study area. The word "ENGLAND" is written in large, bold, black capital letters across the middle of the map.

Coordinate System: British National Grid
Sheet X Centroid Coordinate: 549309.24E Sheet Y Centroid Coordinate: 372223.16N



BACKGROUND MAPPING INFORMATION HAS BEEN REPRODUCED FROM THE ORDNANCE SURVEY BY PERMISSION OF ORDNANCE SURVEY OF THE CONTROLLER OF HIS MAJESTY'S STATIONERY OFFICE. © CROWN COPYRIGHT AND DATABASE RIGHTS 2024 ORDNANCE SURVEY 0100031673.

| | | | | | |
|-------|--------|-------------|-------|---------|----------|
| | | | | | |
| 1 | MAY 25 | FIRST ISSUE | DD | LH | BL |
| Issue | Date | Remarks | Drawn | Checked | Approved |

Title

DETAILED AGRICULTURAL LAND
CLASSIFICATION

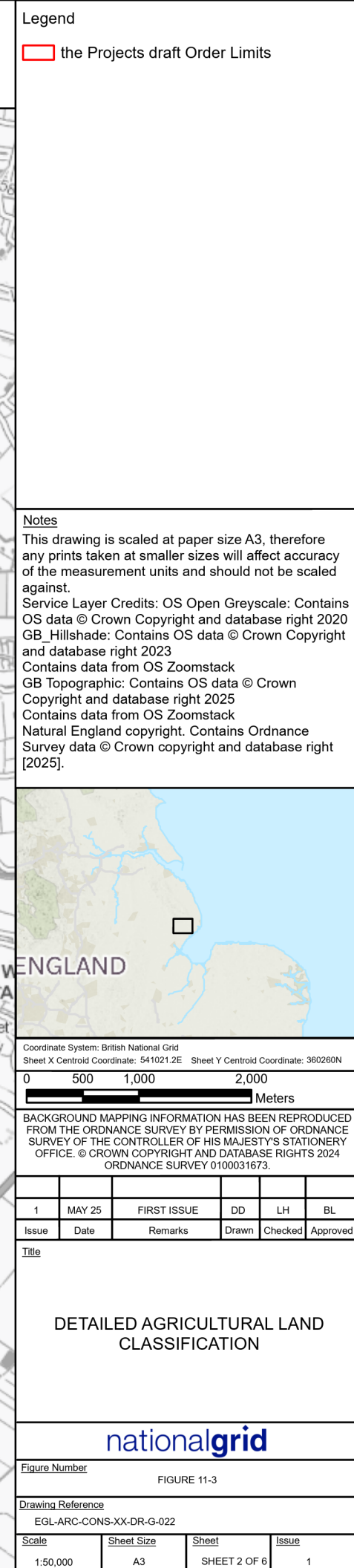
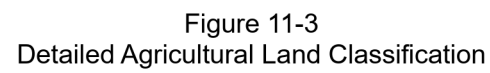
nationalgrid

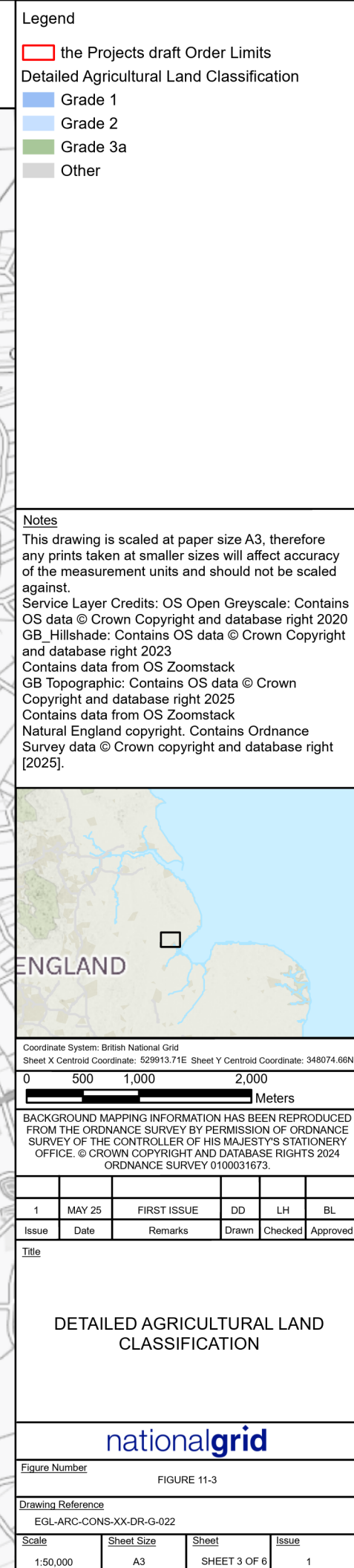
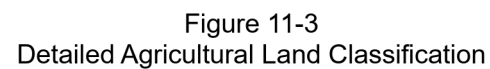
Figure Number

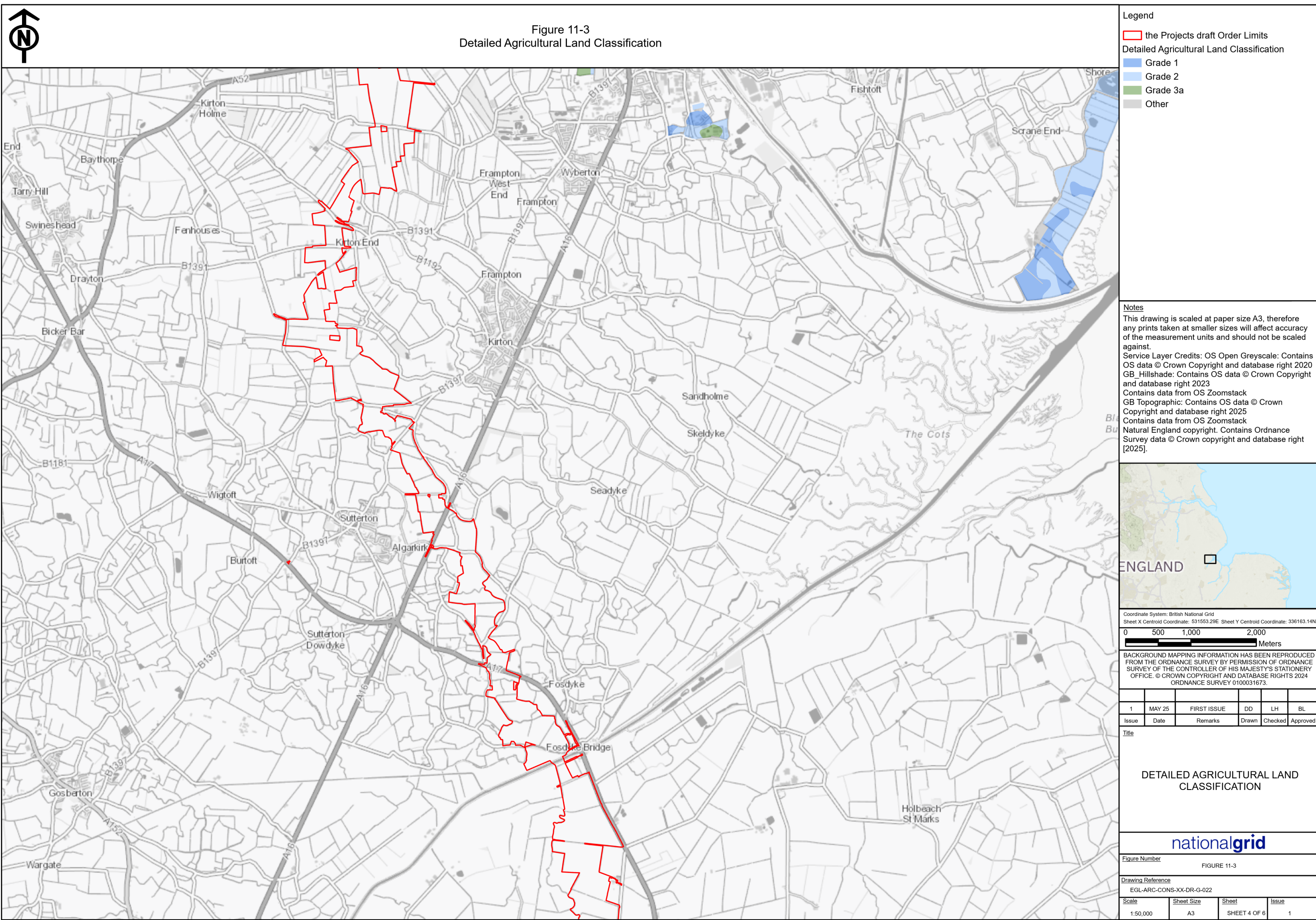
FIGURE 11-3

| | |
|-------------------|--------------------------|
| Drawing Reference | EGL-ARC-CONS-XX-DR-G-022 |
|-------------------|--------------------------|


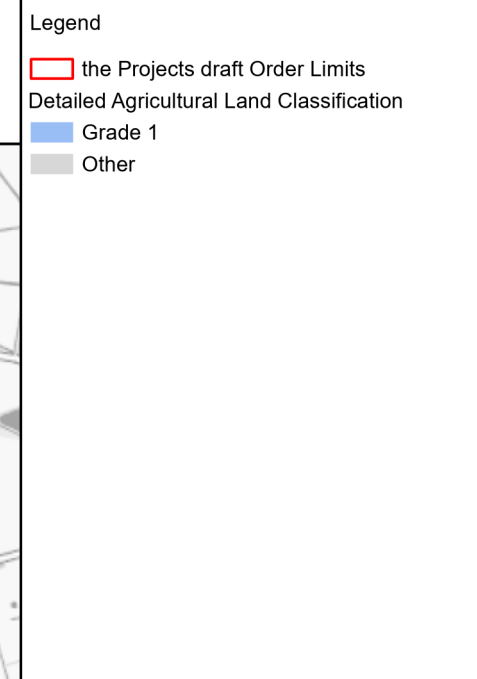
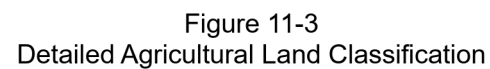
| | | | |
|--------------|-------------------|--------------|--------------|
| <u>Scale</u> | <u>Sheet Size</u> | <u>Sheet</u> | <u>Issue</u> |
| 1:50,000 | A3 | SHEET 1 OF 6 | 1 |







</



A map of England with a black box in the south-east corner indicating the location of the study area. The word "ENGLAND" is written in large, bold, black capital letters across the middle of the map.

A horizontal scale bar with tick marks at 0, 500, 1,000, and 2,000. The word "Meters" is written at the right end of the bar.

BACKGROUND MAPPING INFORMATION HAS BEEN REPRODUCED FROM THE ORDNANCE SURVEY BY PERMISSION OF ORDNANCE SURVEY OF THE CONTROLLER OF HIS MAJESTY'S STATIONERY OFFICE. © CROWN COPYRIGHT AND DATABASE RIGHTS 2024 ORDNANCE SURVEY 0100031673.

| | | | | | |
|-------|--------|-------------|-------|---------|----------|
| | | | | | |
| 1 | MAY 25 | FIRST ISSUE | DD | LH | BL |
| Issue | Date | Remarks | Drawn | Checked | Approved |

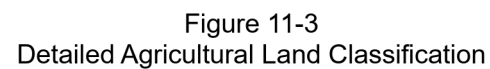
Title

DETAILED AGRICULTURAL LAND
CLASSIFICATION

national**grid**

| | |
|---------------|-------------|
| Figure Number | FIGURE 11-3 |
|---------------|-------------|

| | | | |
|--------------------------|------------|--------------|-------|
| Drawing Reference | | | |
| EGL-ARC-CONS-XX-DR-G-022 | | | |
| Scale | Sheet Size | Sheet | Issue |
| 1:50,000 | A3 | SHEET 5 OF 6 | 1 |



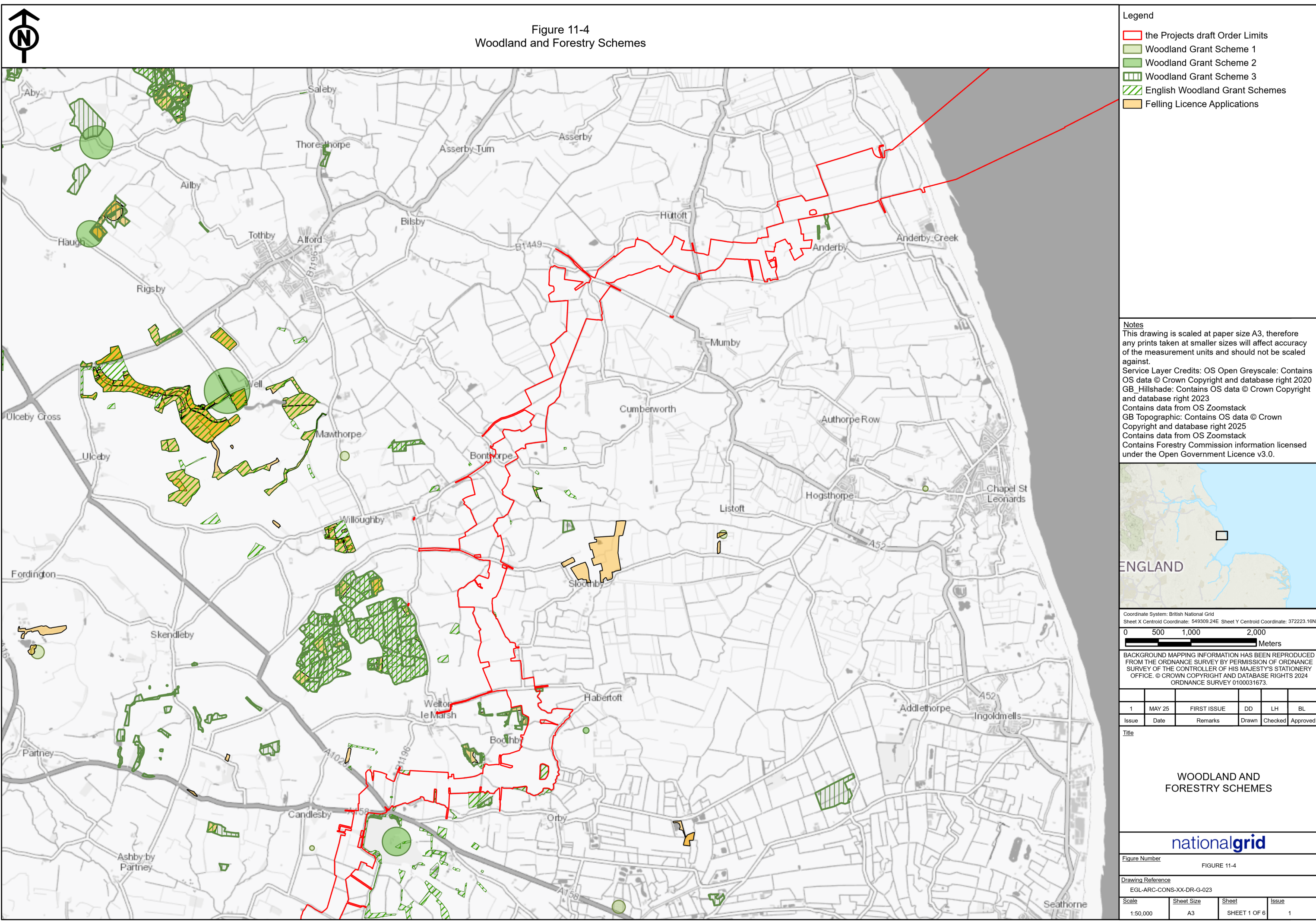


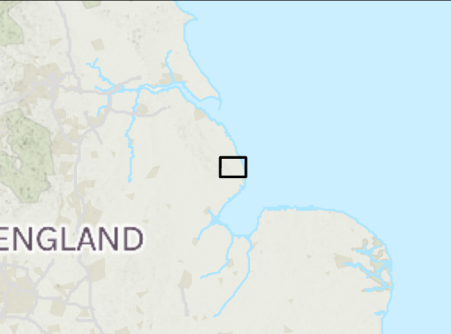
Figure 11-4
Woodland and Forestry Schemes

- Legend
- the Projects draft Order Limits
 - Woodland Grant Scheme 1
 - Woodland Grant Scheme 2
 - Woodland Grant Scheme 3
 - English Woodland Grant Schemes
 - Felling Licence Applications

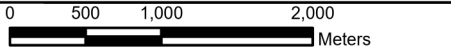
Notes

This drawing is scaled at paper size A3, therefore any prints taken at smaller sizes will affect accuracy of the measurement units and should not be scaled against.

Service Layer Credits: OS Open Greyscale: Contains OS data © Crown Copyright and database right 2020
GB_Hillshade: Contains OS data © Crown Copyright and database right 2023
Contains data from OS Zoomstack
GB Topographic: Contains OS data © Crown Copyright and database right 2025
Contains data from OS Zoomstack
Contains Forestry Commission information licensed under the Open Government Licence v3.0.



Coordinate System: British National Grid
Sheet X Centroid Coordinate: 549399.24E Sheet Y Centroid Coordinate: 372223.16N



BACKGROUND MAPPING INFORMATION HAS BEEN REPRODUCED FROM THE ORDNANCE SURVEY BY PERMISSION OF ORDNANCE SURVEY OF THE CONTROLLER OF HIS MAJESTY'S STATIONERY OFFICE. © CROWN COPYRIGHT AND DATABASE RIGHTS 2024
ORDNANCE SURVEY 0100031673.

| | | | | | |
|-------|--------|-------------|-------|---------|----------|
| 1 | MAY 25 | FIRST ISSUE | DD | LH | BL |
| Issue | Date | Remarks | Drawn | Checked | Approved |

Title

WOODLAND AND FORESTRY SCHEMES

nationalgrid


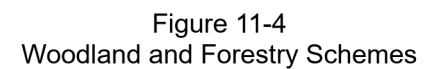
Figure Number

FIGURE 11-4

Drawing Reference

EGL-ARC-CONS-XX-DR-G-023

| | | | |
|----------|------------|--------------|-------|
| Scale | Sheet Size | Sheet | Issue |
| 1:50,000 | A3 | SHEET 1 OF 6 | 1 |



A map of England with a black box indicating the location of the study area on the east coast.

0 500 1,000 2,000
Meters

BACKGROUND MAPPING INFORMATION HAS BEEN REPRODUCED FROM THE ORDNANCE SURVEY BY PERMISSION OF ORDNANCE SURVEY OF THE CONTROLLER OF HIS MAJESTY'S STATIONERY OFFICE. © CROWN COPYRIGHT AND DATABASE RIGHTS 2024 ORDNANCE SURVEY 0100031673.

| | | | | | |
|-------|--------|-------------|-------|---------|----------|
| | | | | | |
| 1 | MAY 25 | FIRST ISSUE | DD | LH | BL |
| Issue | Date | Remarks | Drawn | Checked | Approved |

| | |
|-------|--|
| Title | |
|-------|--|

WOODLAND AND FORESTRY SCHEMES

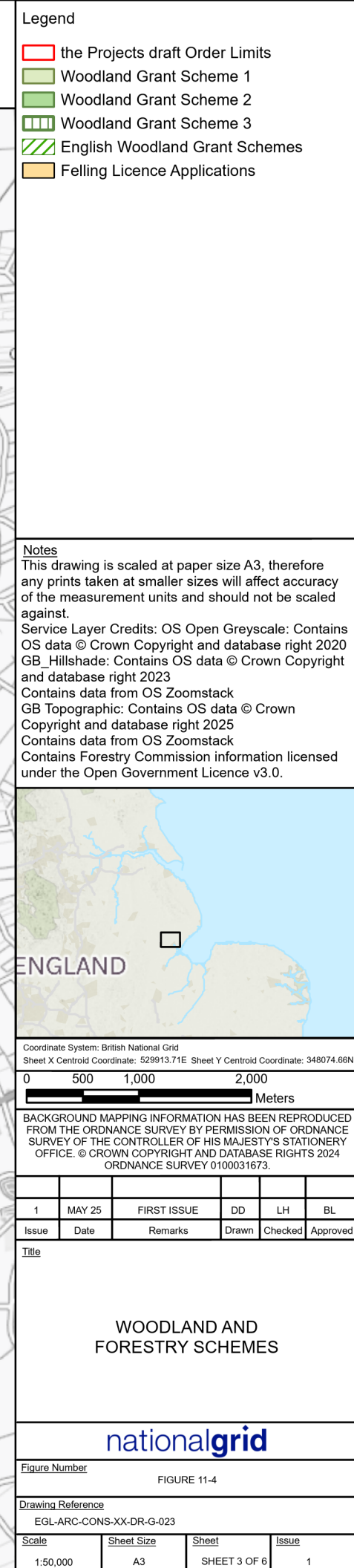
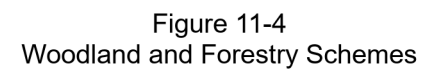
national**grid**


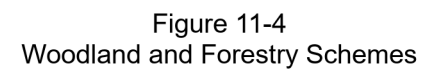
Figure Number

FIGURE 11-4

| | |
|-------------------|--------------------------|
| Drawing Reference | FGI-ARC-CONS-XX-DR-G-023 |
|-------------------|--------------------------|

| | | | |
|--------------|-------------------|--------------|--------------|
| <u>Scale</u> | <u>Sheet Size</u> | <u>Sheet</u> | <u>Issue</u> |
| 1:50,000 | A3 | SHEET 2 OF 6 | 1 |





A map of England with a black box in the south-east corner indicating the location of the study area. The word "ENGLAND" is written in large, bold, black capital letters across the middle of the map.

Coordinate System: British National Grid
Sheet X Centroid Coordinate: 531553.29E Sheet Y Centroid Coordinate: 336163.14N

0 500 1,000 2,000
Meters

BACKGROUND MAPPING INFORMATION HAS BEEN REPRODUCED FROM THE ORDNANCE SURVEY BY PERMISSION OF ORDNANCE SURVEY OF THE CONTROLLER OF HIS MAJESTY'S STATIONERY OFFICE. © CROWN COPYRIGHT AND DATABASE RIGHTS 2024 ORDNANCE SURVEY 0100031673.

| | | | | | |
|-------|--------|-------------|-------|---------|----------|
| | | | | | |
| 1 | MAY 25 | FIRST ISSUE | DD | LH | BL |
| Issue | Date | Remarks | Drawn | Checked | Approved |

Title


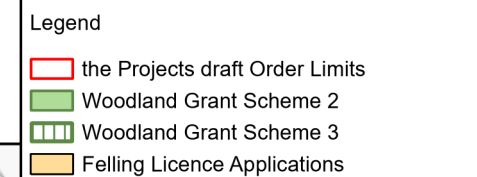
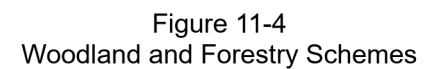
WOODLAND AND FORESTRY SCHEMES

national**grid**

Figure Number

FIGURE 11-4

| | | | |
|--|-------------------------|------------------------------|-------------------|
| <u>Drawing Reference</u> EGL-ARC-CONS-XX-DR-G-023 | | | |
| <u>Scale</u> 1:50,000 | <u>Sheet Size</u> A3 | <u>Sheet</u> SHEET 4 OF 6 | <u>Issue</u> 1 |



A map of England with a black box in the south-east corner indicating the location of the study area. The word "ENGLAND" is written in large, bold, black capital letters across the middle of the map.

A horizontal scale bar with tick marks at 0, 500, 1,000, and 2,000. The word "Meters" is written at the right end of the bar.

BACKGROUND MAPPING INFORMATION HAS BEEN REPRODUCED FROM THE ORDNANCE SURVEY BY PERMISSION OF ORDNANCE SURVEY OF THE CONTROLLER OF HIS MAJESTY'S STATIONERY OFFICE. © CROWN COPYRIGHT AND DATABASE RIGHTS 2024 ORDNANCE SURVEY 0100031673.

| | | | | | |
|-------|--------|-------------|-------|---------|----------|
| | | | | | |
| 1 | MAY 25 | FIRST ISSUE | DD | LH | BL |
| Issue | Date | Remarks | Drawn | Checked | Approved |

Title

WOODLAND AND FORESTRY SCHEMES

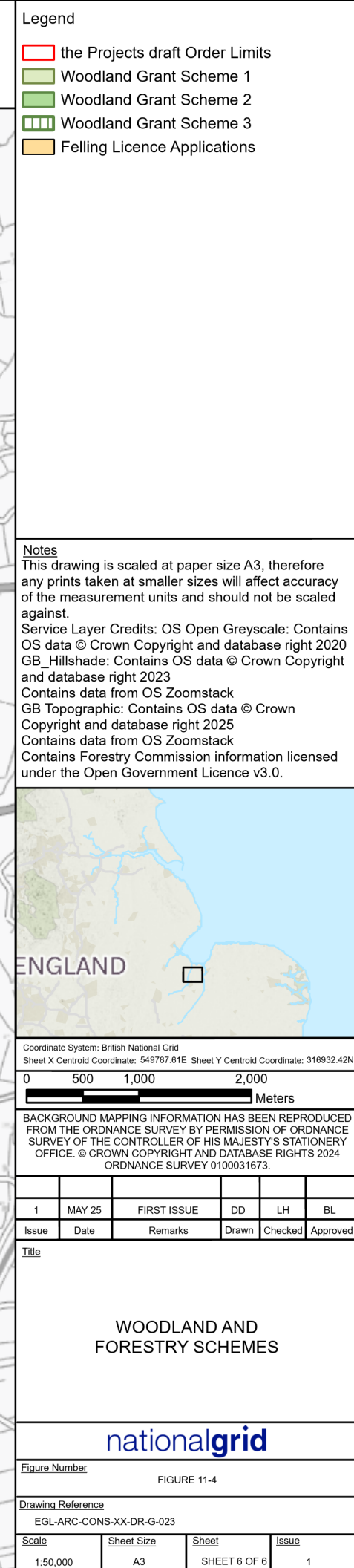
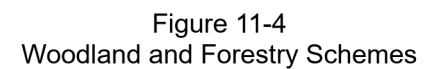
nationalgrid

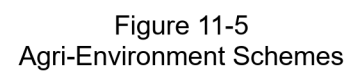
Figure Number

FIGURE 11-4

| | |
|-------------------|--|
| Drawing Reference | |
|-------------------|--|

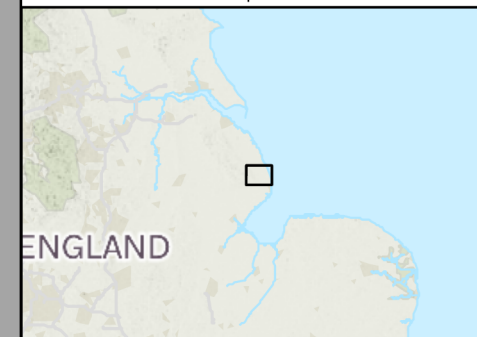
| EGL-ARC-CONS-XX-DR-G-023 | | | |
|--------------------------|-------------------|--------------|--------------|
| <u>Scale</u> | <u>Sheet Size</u> | <u>Sheet</u> | <u>Issue</u> |
| 1:50,000 | A3 | SHEET 5 OF 6 | 1 |



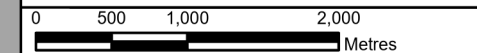


Notes
This drawing is scaled at paper size A3, therefore any prints taken at smaller sizes will affect accuracy of the measurement units and should not be scaled against.

Service Layer Credits: OS Open Greyscale: Contains OS data © Crown Copyright and database right 2020
GB_Hillshade: Contains OS data © Crown Copyright and database right 2023
Contains data from OS Zoomstack
GB Topographic: Contains OS data © Crown Copyright and database right 2025
Contains data from OS Zoomstack
Data sourced under the Open Government Licence.



Coordinate System: British National Grid
Sheet X Centroid Coordinate: 549309.24E Sheet Y Centroid Coordinate: 372223.16N



BACKGROUND MAPPING INFORMATION HAS BEEN REPRODUCED
FROM THE ORDNANCE SURVEY BY PERMISSION OF ORDNANCE
SURVEY OF THE CONTROLLER OF HIS MAJESTY'S STATIONERY
OFFICE. © CROWN COPYRIGHT AND DATABASE RIGHTS 2024
ORDNANCE SURVEY 0100031673.

| | | | | | |
|-------|--------|-------------|-------|---------|----------|
| | | | | | |
| 1 | MAY 25 | FIRST ISSUE | DD | LH | BL |
| Issue | Date | Remarks | Drawn | Checked | Approved |

| | |
|-------|--|
| Title | |
|-------|--|

AGRI-ENVIRONMENT SCHEMES

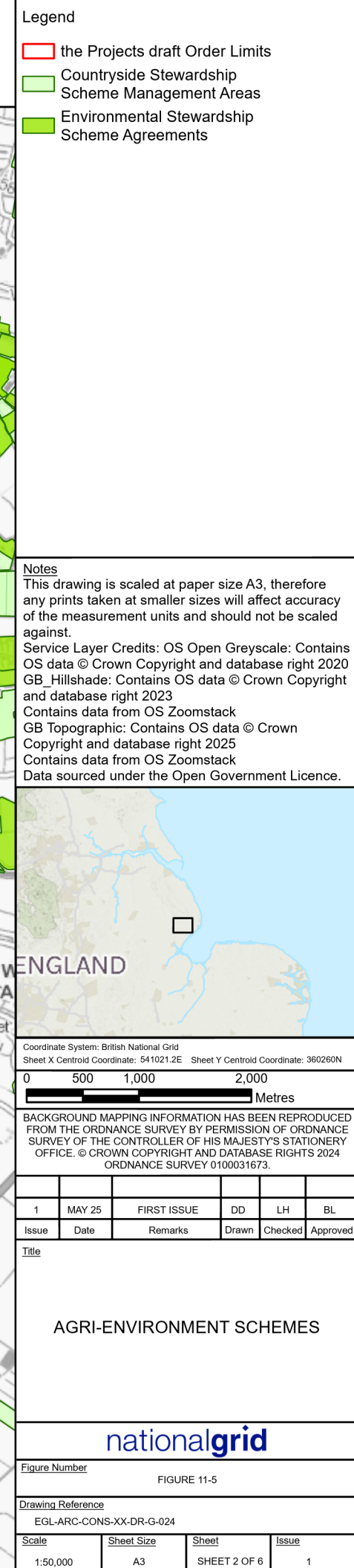
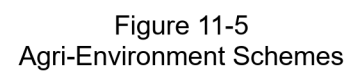
national**grid**

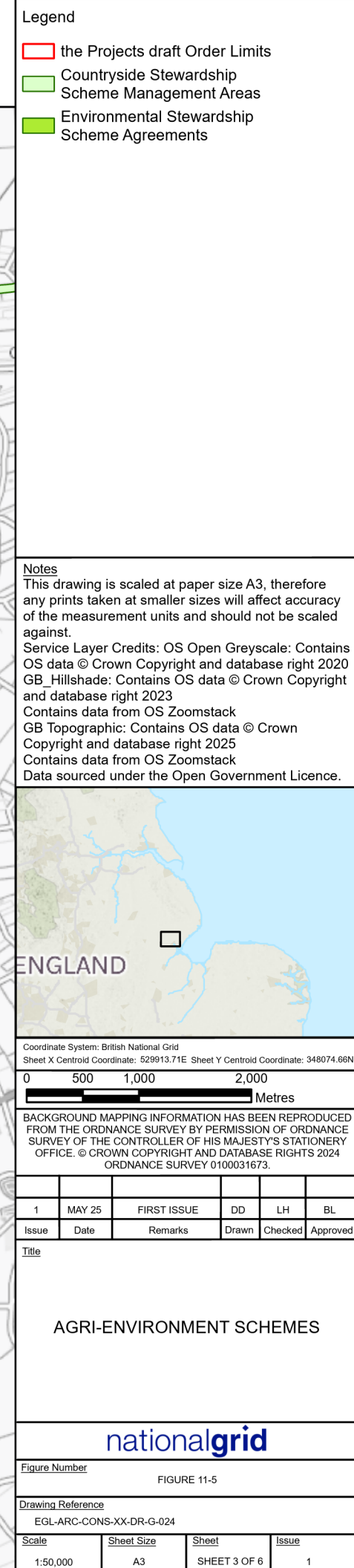
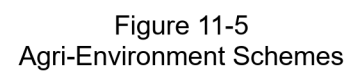
Figure Number

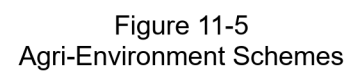
FIGURE 11-5


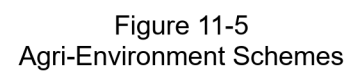
| | |
|-------------------|--------------------------|
| Drawing Reference | EGL-ARC-CONS-XX-DR-G-024 |
|-------------------|--------------------------|

| | | | |
|--------------|-------------------|--------------|--------------|
| <u>Scale</u> | <u>Sheet Size</u> | <u>Sheet</u> | <u>Issue</u> |
| 1:50,000 | A3 | SHEET 1 OF 6 | 1 |









A map of England with a black box in the south-east corner indicating the location of the study area. The word "ENGLAND" is written in large, bold, black capital letters across the middle of the map.

0 500 1,000 2,000
Metres

BACKGROUND MAPPING INFORMATION HAS BEEN REPRODUCED FROM THE ORDNANCE SURVEY BY PERMISSION OF ORDNANCE SURVEY OF THE CONTROLLER OF HIS MAJESTY'S STATIONERY OFFICE. © CROWN COPYRIGHT AND DATABASE RIGHTS 2024 ORDNANCE SURVEY 0100031673.

| | | | | | |
|-------|--------|-------------|-------|---------|----------|
| | | | | | |
| 1 | MAY 25 | FIRST ISSUE | DD | LH | BL |
| Issue | Date | Remarks | Drawn | Checked | Approved |

Title

AGRI-ENVIRONMENT SCHEMES

Figure Number

FIGURE 11-5

| | | | |
|--------------------------|-------------------|--------------|--------------|
| <u>Drawing Reference</u> | | | |
| EGL-ARC-CONS-XX-DR-G-024 | | | |
| <u>Scale</u> | <u>Sheet Size</u> | <u>Sheet</u> | <u>Issue</u> |
| 1:50,000 | A3 | SHEET 5 OF 6 | 1 |

