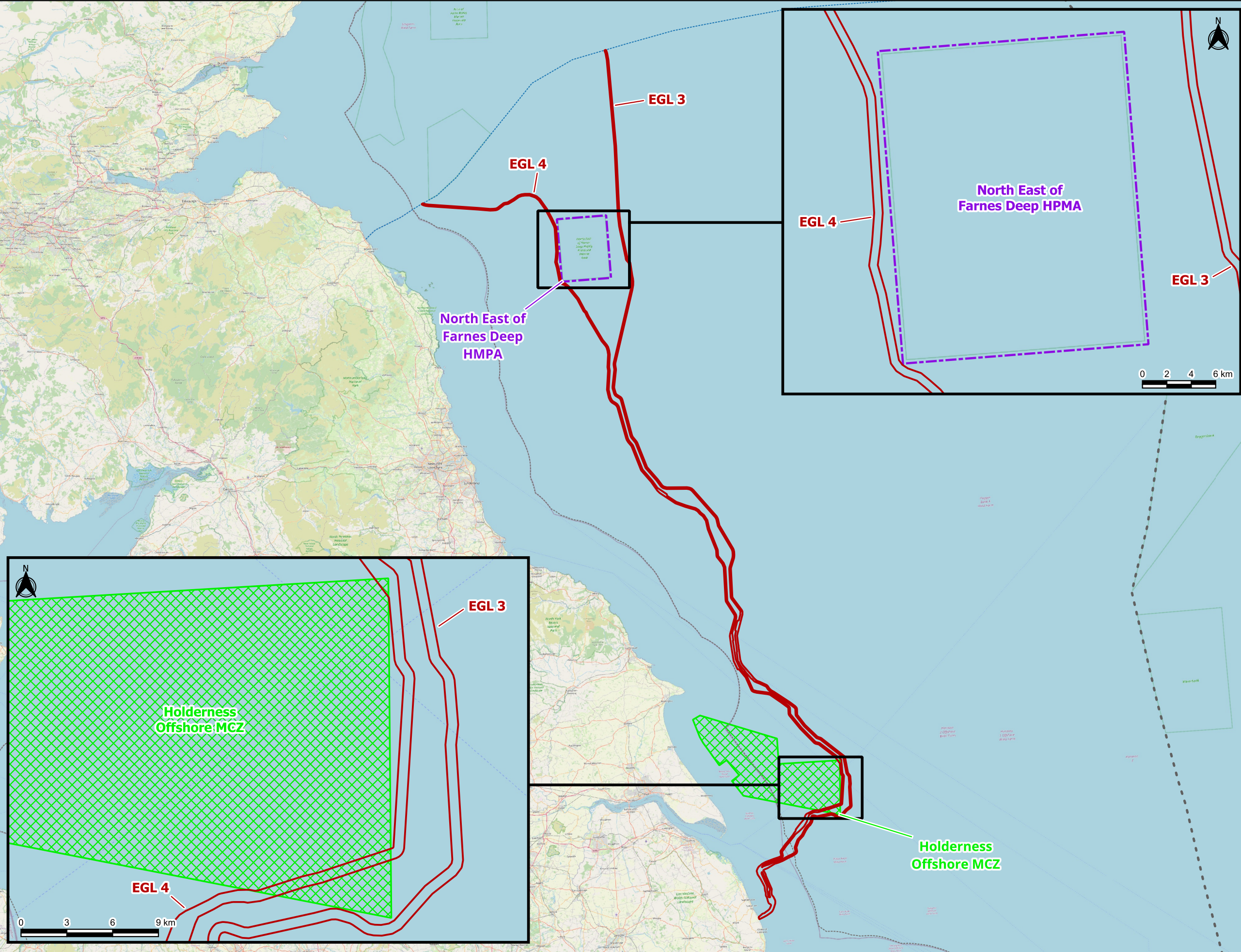




Designated Sites Screened in to the Stage 1 Assessment

- Legend**
- English OffshoreDraft Order Limits
 - Highly Protected Marine Area (HPMA)
 - Marine Conservation Zone (MCZ)
 - 12NM Limit
 - Scottish Adjacent Waters
 - EEZ



Notes
This drawing is scaled at paper size A3, therefore any prints taken at smaller sizes will affect accuracy of the measurement units and should not be scaled against.



Centroid
Coordinate X: 665810.362567734
Coordinate Y: 6088146.956934594



©OpenStreetMap-Open Data Commons Open Database License (ODbL), Creative Commons Attribution-ShareAlike (CC-BY-SA), Base map and data from OpenStreetMap and OpenStreetMap Foundation (CC-BY-SA), © <https://www.openstreetmap.org> and contributors © Natural England copyright, Contains Ordnance Survey data © Contains JNCC data © Crown copyright and database right (2025), (OGL), Contains OS data

v01	04/04/2025	-	AN	JC	NP
Issue	Date	Remarks	Drawn	Checked	Approved

Title

Designated Sites Screened in to the Stage 1 Assessment

nationalgrid

Figure Number
Figure 5-1

Drawing Reference
C01494-EGL3&4-PROT-023-C

Scale 1:1,500,000	Sheet Size A3	Sheet SHEET 1 OF 1	Issue 01
----------------------	------------------	-----------------------	-------------

